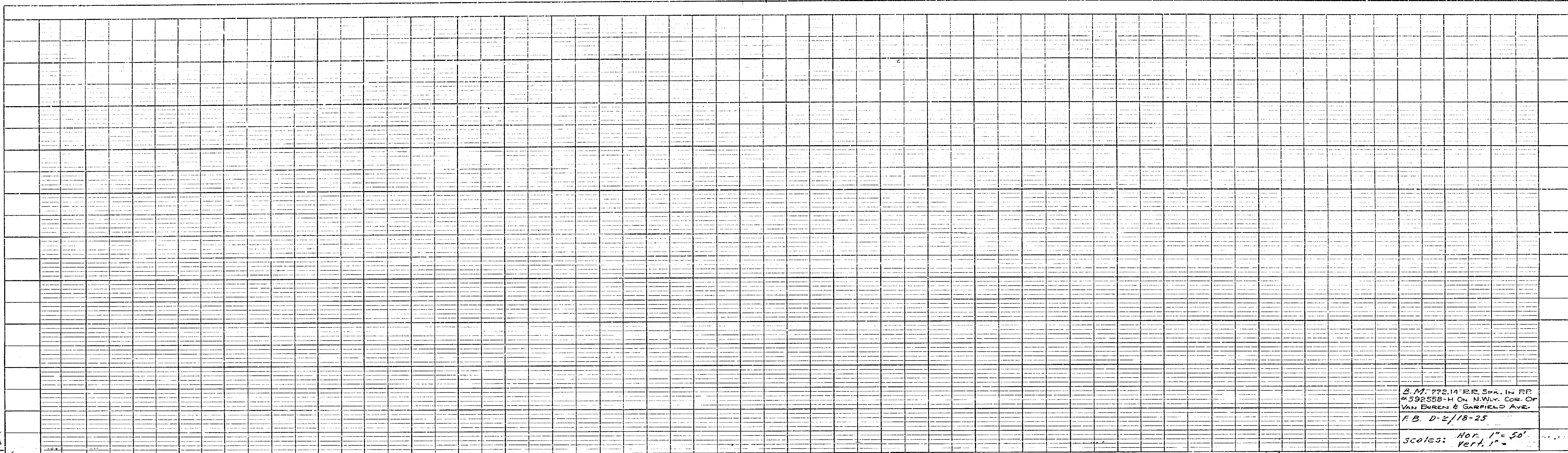
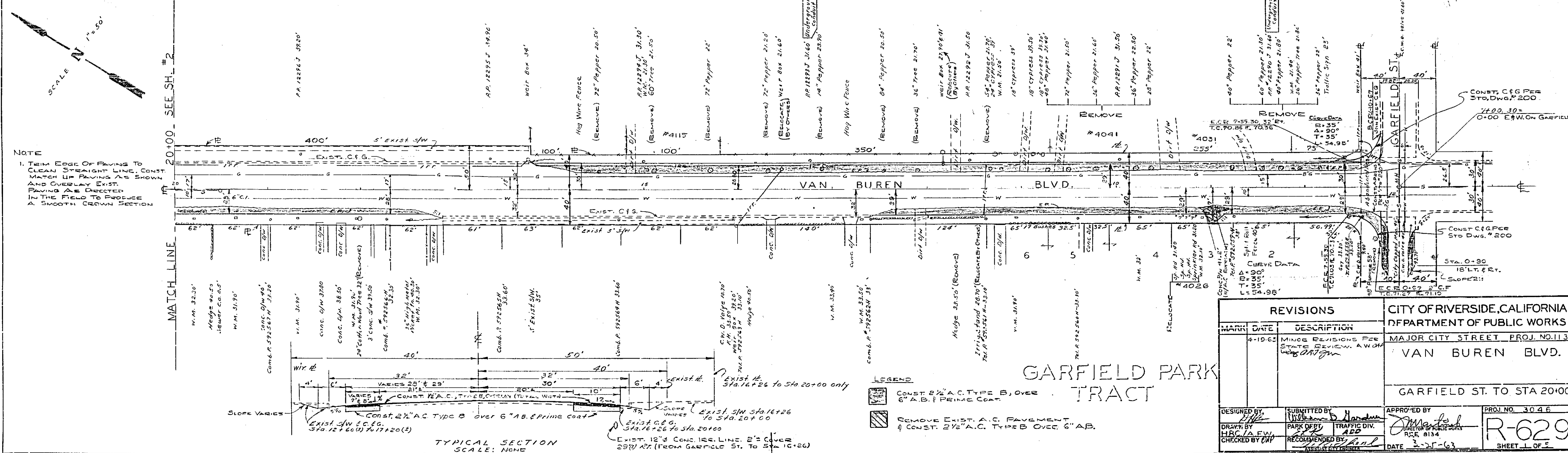


SCALE 1" = 20'

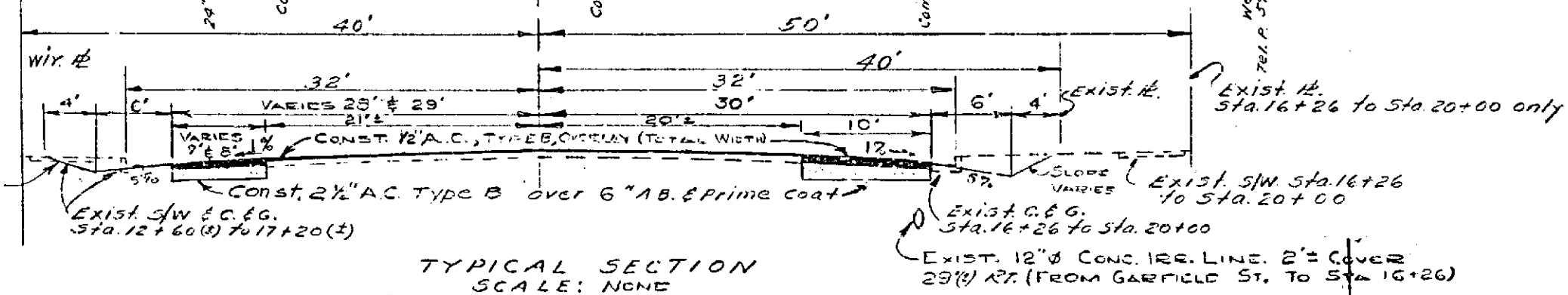
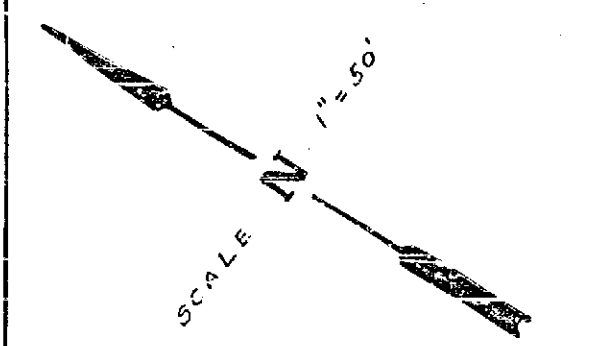
VAN BUREN BLVD.
 X-GUTTER AT CHALLENGEN
 R-629
 11-21-63
 OAP



B.M. 772.14' B.C. SPR. IN RR
 #592558-H ON N.W.1/4 COR. OF
 VAN BUREN & GARFIELD AVE.
 F.B. D-2/18-25
 scales: Hor. 1"=50'
 Vert. 1"=10'



NOTE
 1. FROM EDGE OF PAVING TO CLEAN STRAIGHT LINE, CONST MATCH LINE PAVERS AS SHOWN AND OVERLAY EXIST. PAVING AS DIRECTED IN THE FIELD TO PRODUCE A SMOOTH CROWN SECTION



- LEGEND
- CONST. 2 1/2" A.C. TYPE B, OVER 6" A.B. & PRIME COAT
 - REMOVE EXIST. A.C. PAVEMENT & CONST. 2 1/2" A.C. TYPE B OVER 6" A.B.

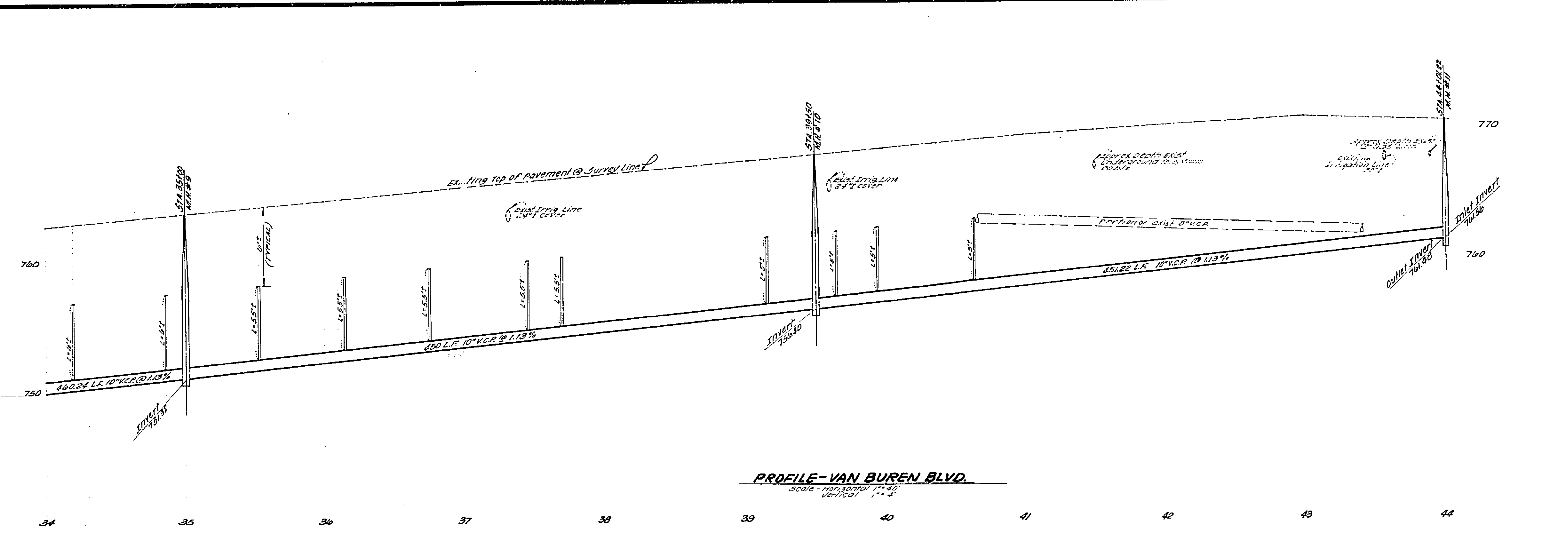
REVISIONS		CITY OF RIVERSIDE, CALIFORNIA DEPARTMENT OF PUBLIC WORKS	
MARK	DATE	DESCRIPTION	
4-10-62		MINOR REVISIONS PER STATE REVIEW. A.W.M.H.	MAJOR CITY STREET PROJ. NO. 113
			VAN BUREN BLVD.
			GARFIELD ST. TO STA 20+00
DESIGNED BY	SUBMITTED BY	APPROVED BY	PROJ. NO. 304 F
DRAWN BY	PARK DEPT	TRAFFIC DIV.	R-629
CHECKED BY	RECOMMENDED BY	DATE	SHEET 1 OF 3

PROFILE

DATE	
BY	
PROJECT	
NO.	
DATE	

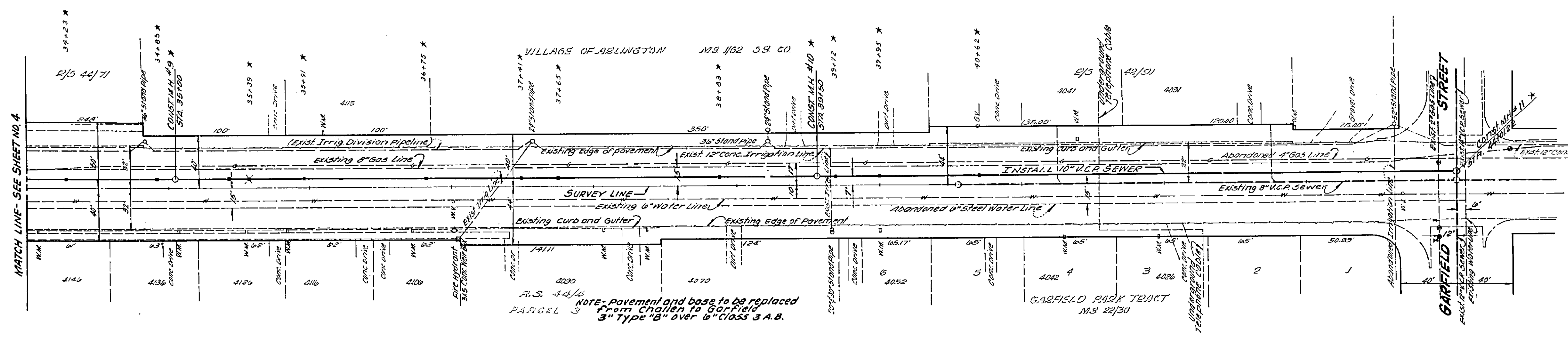
PLAN

DATE	
BY	
PROJECT	
NO.	
DATE	

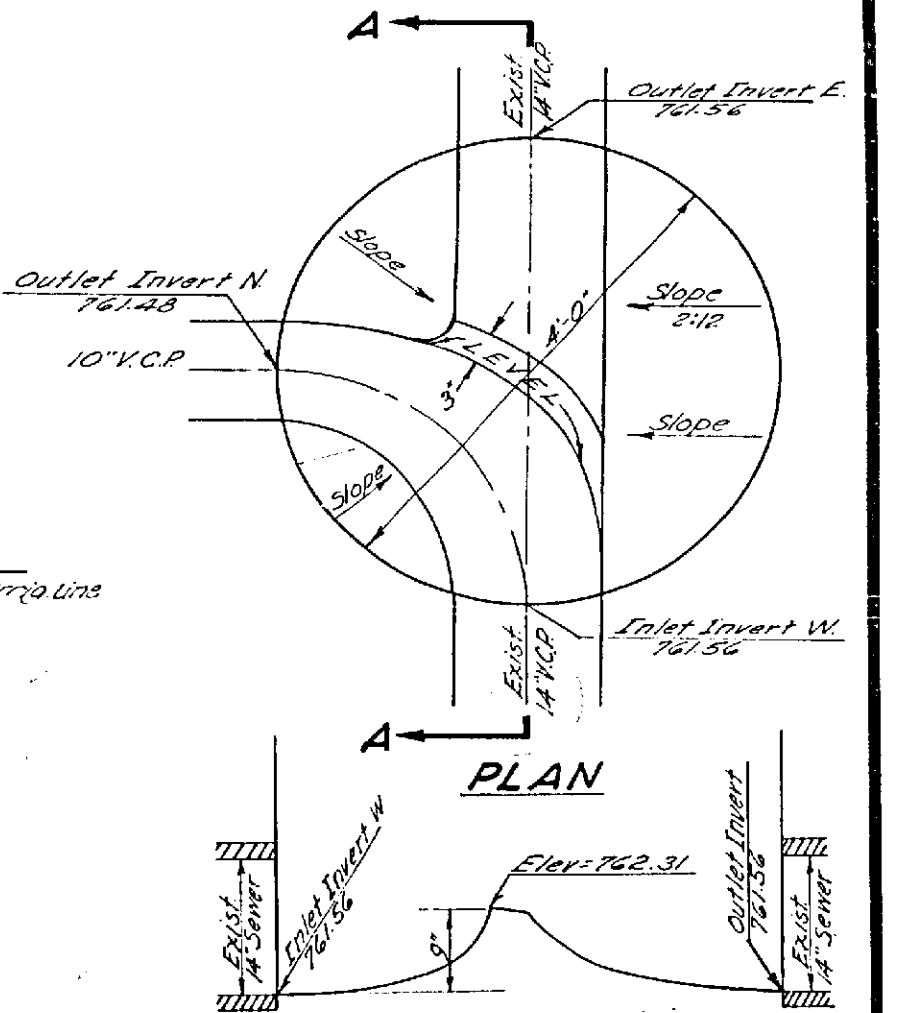


PROFILE - VAN BUREN BLVD.
Scale - 1" = 40' VERTICALLY

BENCH MARK
T.B.M. 60 P Nail in Telephone pole No. 5925634 West Side of VAN BUREN, Survey Line Sta. 37109.6 Elev. 767.26



PLAN - VAN BUREN BLVD.
Scale - 1" = 40'

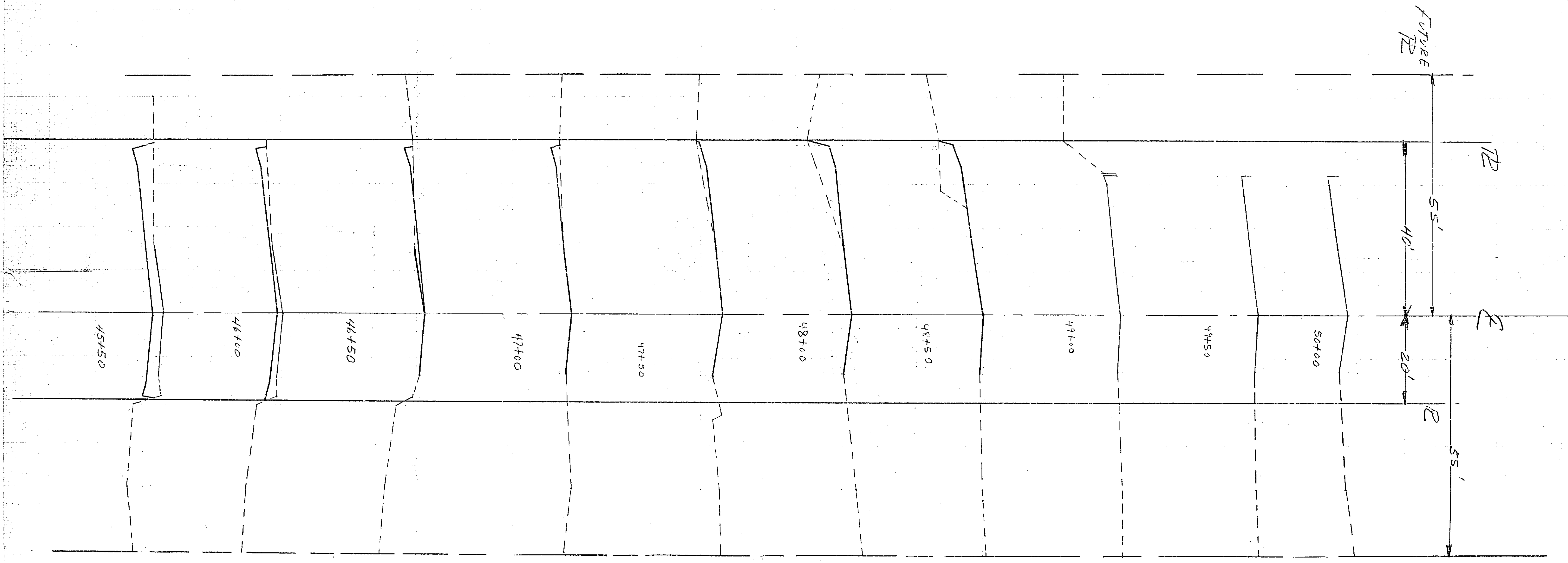


SECTION A-A
MANHOLE #11 DETAIL
INTERSECTION OF VAN BUREN AND GARFIELD
Scale - 1/4" = 1'-0"

DESIGNED BY: NESTE, BRUDIN & STONE
DRAWN BY: CIVIL ENGINEERS
CHECKED BY: CIVIL ENGINEERS
DATE: 11/13/55

CITY OF RIVERSIDE, CALIFORNIA DEPARTMENT OF PUBLIC WORKS		VAN BUREN OUTFALL VAN BUREN BOULEVARD STA 34100 TO 45100		PROJECT NO. 5-629
APPROVED BY: [Signature] OFFICE ENGINEER PARK DEPARTMENT TRAFFIC DIVISION ASSISTANT CITY ENG.	BY: [Signature] DATE: 11-22-55	APPROVED BY: [Signature] DIRECTOR OF PUBLIC WORKS	DATE: 11-22-55	SHEET 5 OF 8
DESIGNED BY: [Signature] DRAWN BY: [Signature] CHECKED BY: [Signature]		HORIZ. SCALE: 1" = 40' VERT. SCALE: 1" = 4'		FILE NO.

* AS BUILT 9-17-56 SHW



RD

E

FUTURE RD

FUTURE RD

55'

40'

20'

R

55'

VAN BUREN BLVD.

R-629

SCALE: H. 1"=10'

V. 1"=2'

4884

VAN BUREN BLVD.
SCALE: H. 1"=10'
V. 1"=2'

247

245

247

244

246

245

244

242

244

240

244

246

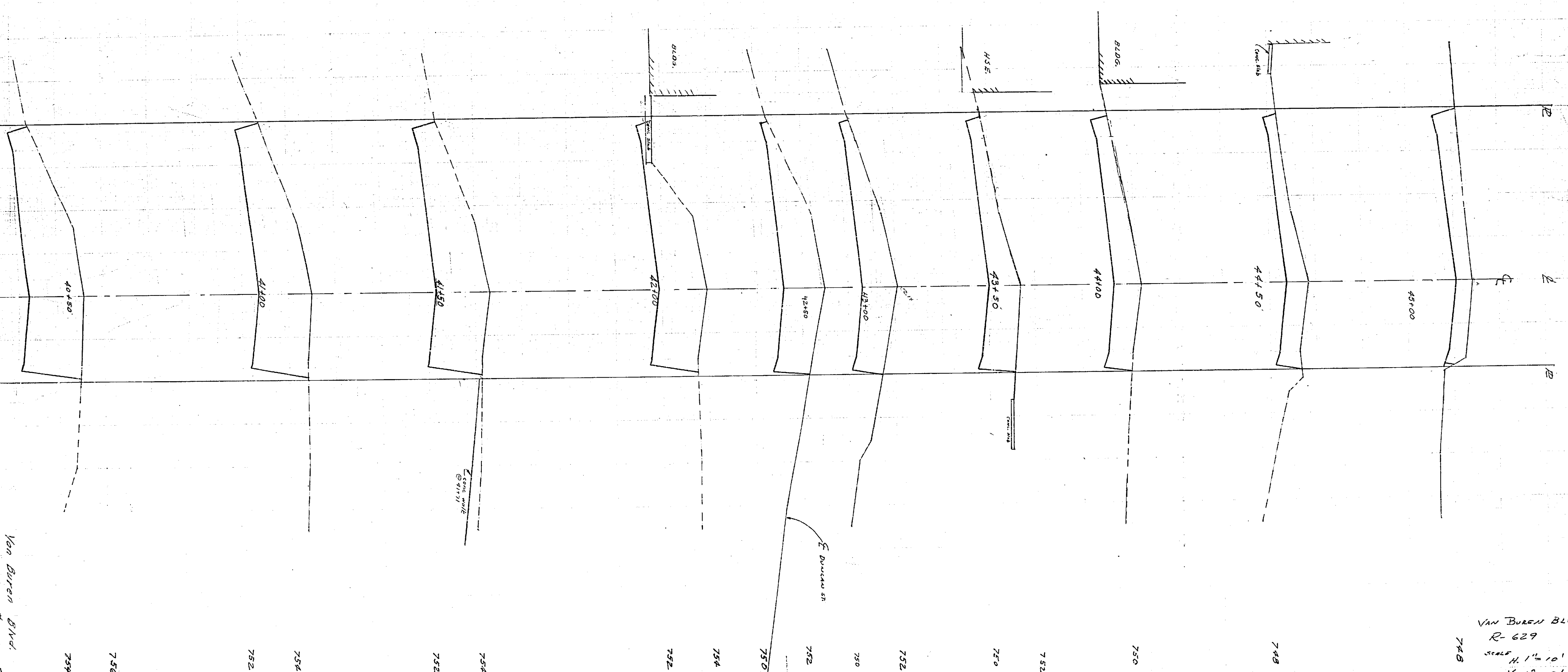
242

244

244

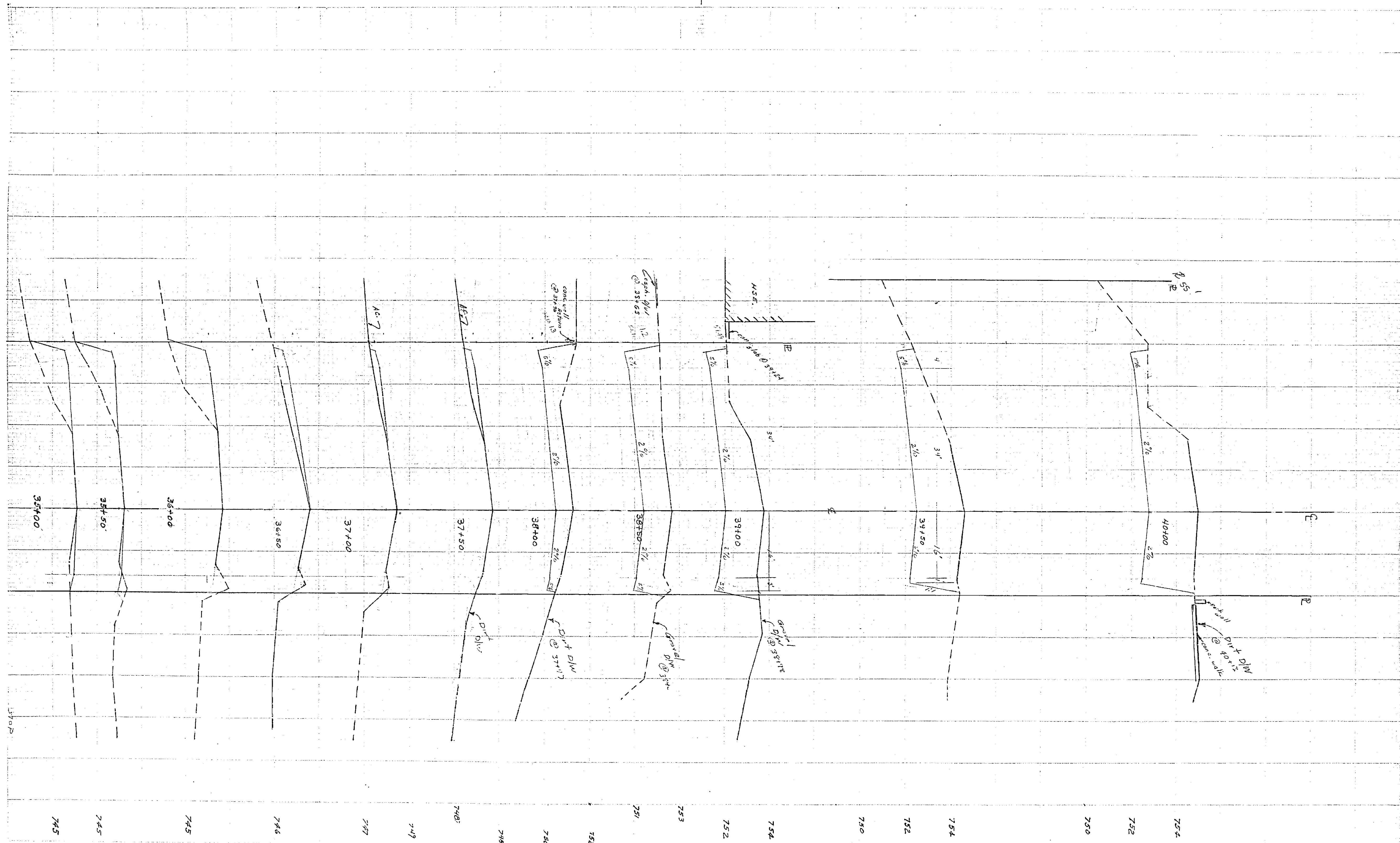
244

VAN BUREN BLVD.
R-629



VAN BUREN BLVD.
PLOT # 3046 F.B.D.2
Scale: Hor. 1"=10'
Vert. 1"=2'
Prepared - CMC
SHEET 2 of 2

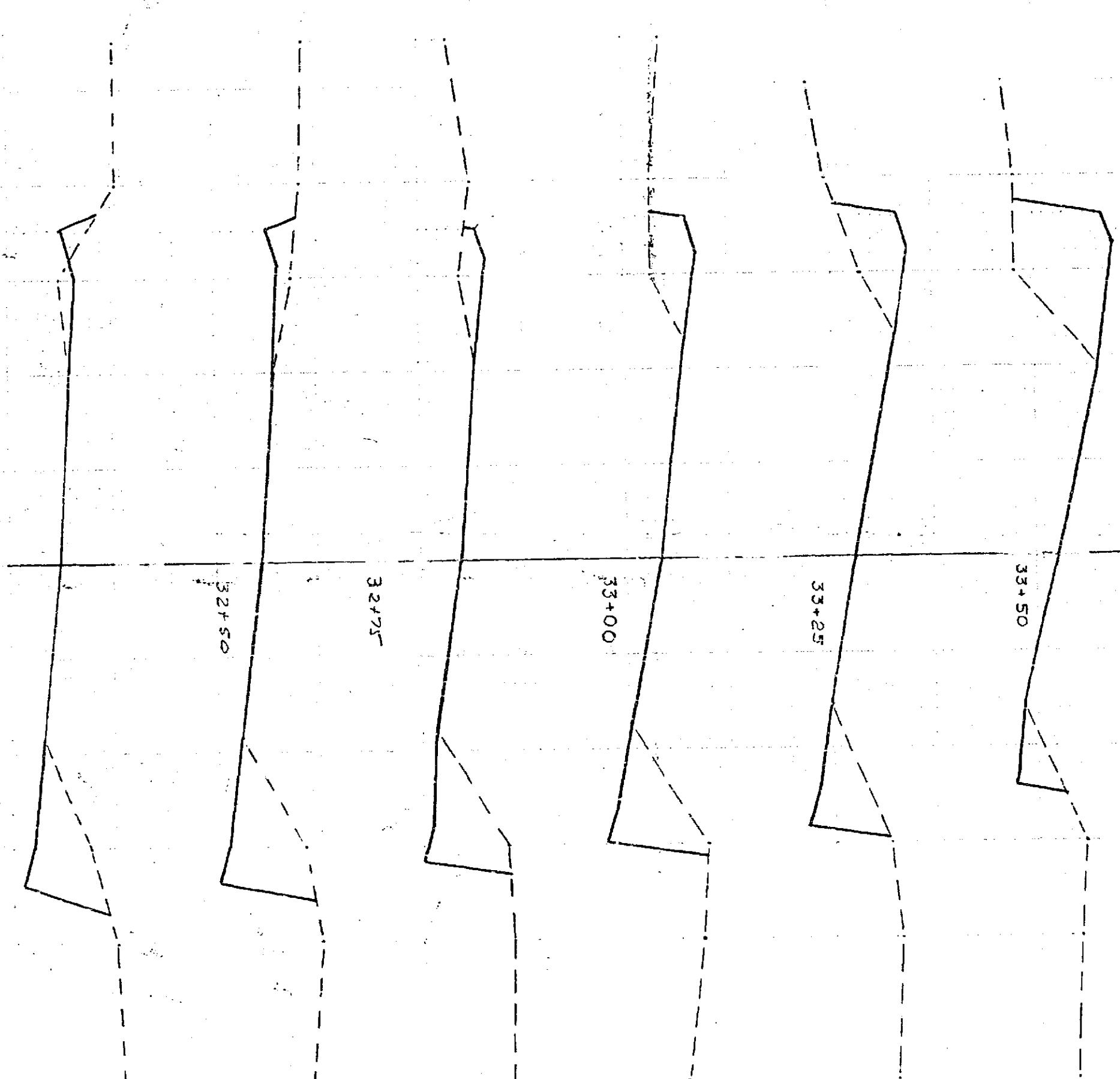
VAN BUREN BLVD.
R-629
SCALE
H. 1"=10'
V. 1"=2'
3 of 4



VAN BUREN BLVD.
 R-629
 SCALE
 H 1/2" = 10'
 V 1" = 2'
 2.4.7

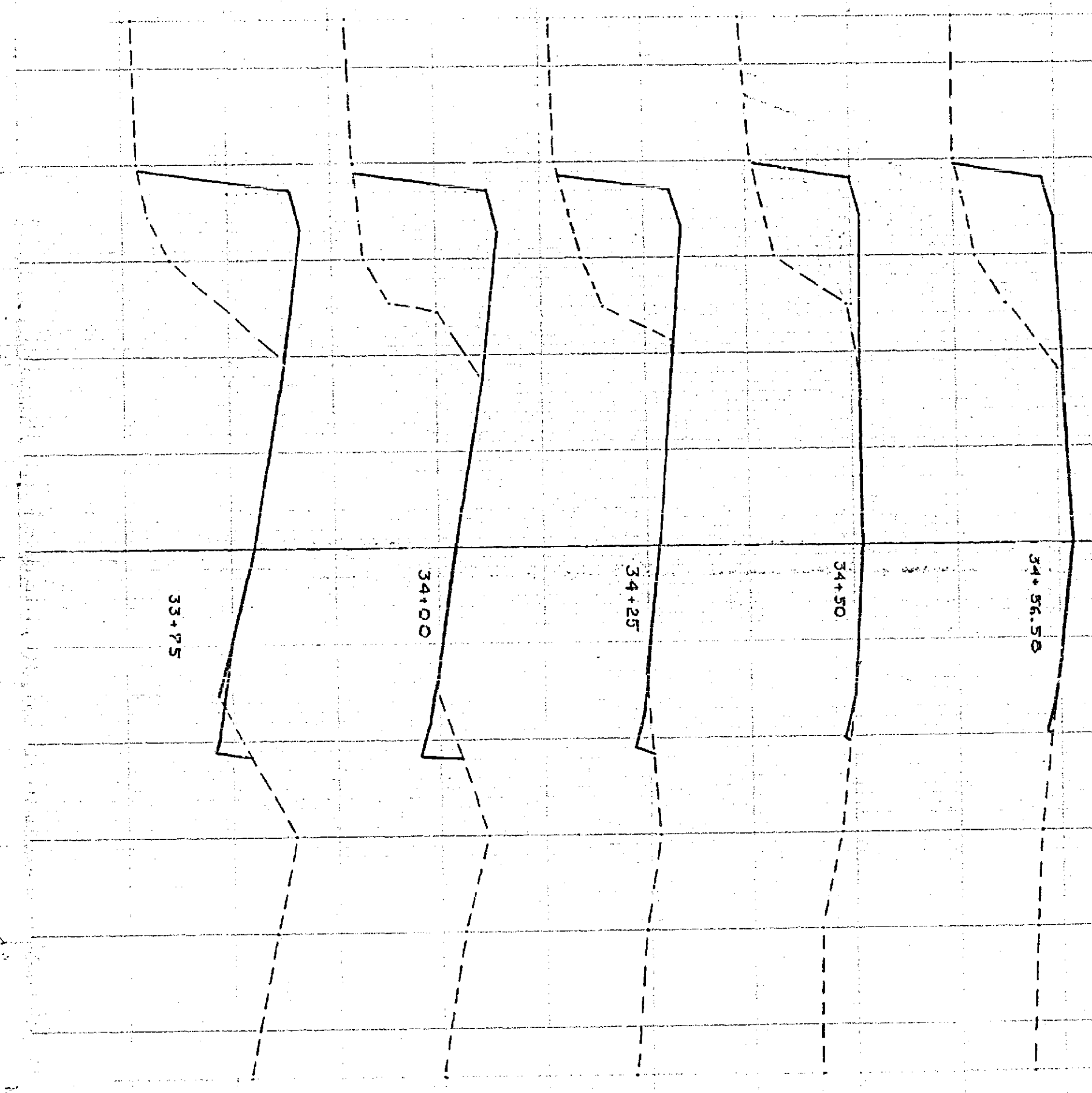
CREVIER & HILL, INC.

32+34.27
B.C.



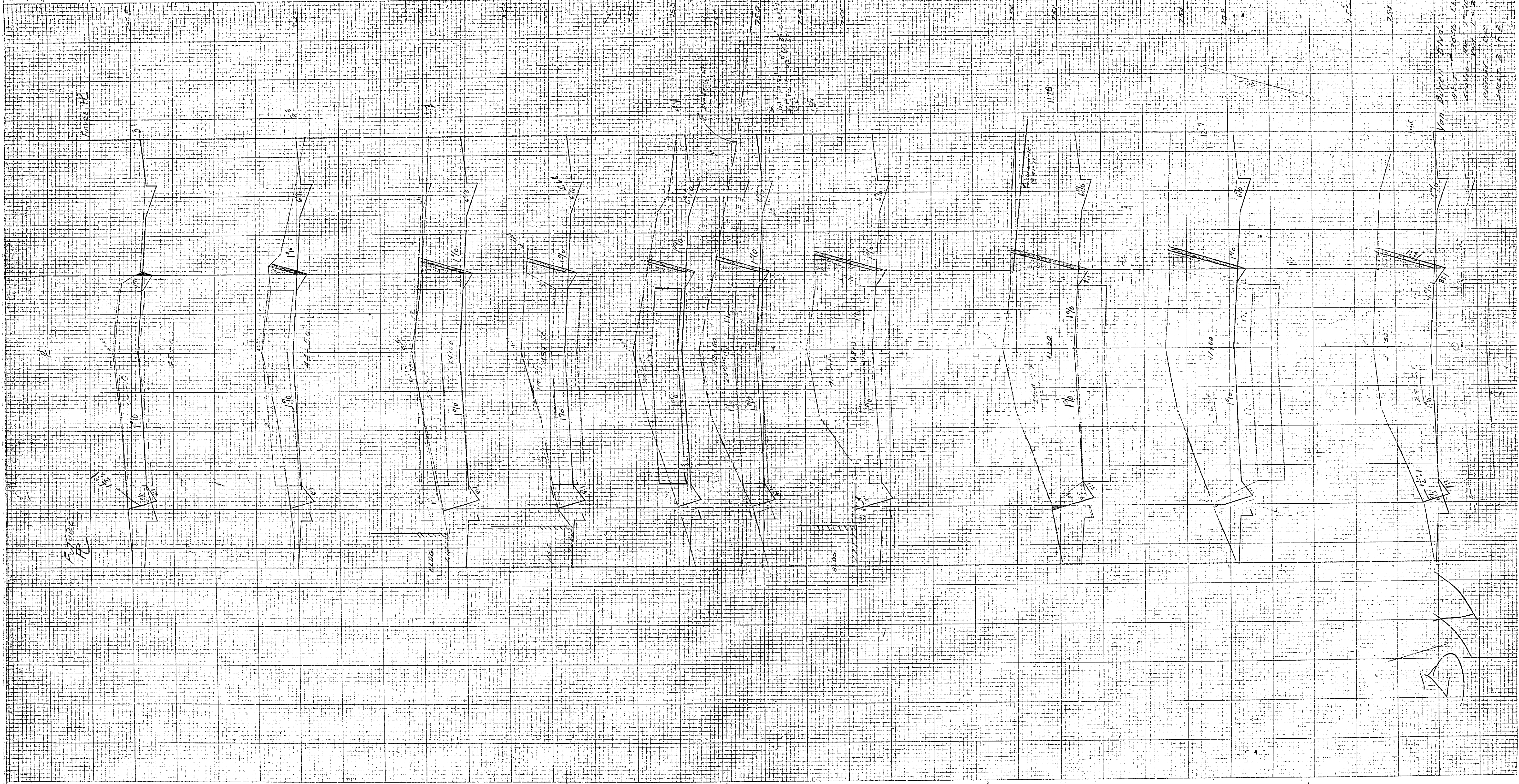
746
746
746
746
746
746
746
746
746

34+50
34+50
34+50
34+50
34+50
34+50
34+50
34+50
34+50



746
746
746
746
746
746
746
746
746

Van Buren Bldg
R-627
Scale H. 1" = 10'
V. 1" = 2'
1044



10000

1:1

1:1.5

1:2

1:3

1:4

1:5

1:6

1:7

1:8

1:9

1:10

1:11

1:12

1:13

1:14

1:15

1:16

1:17

1:18

1:19

1:20

1:21

1:22

1:23

1:24

1:25

1:26

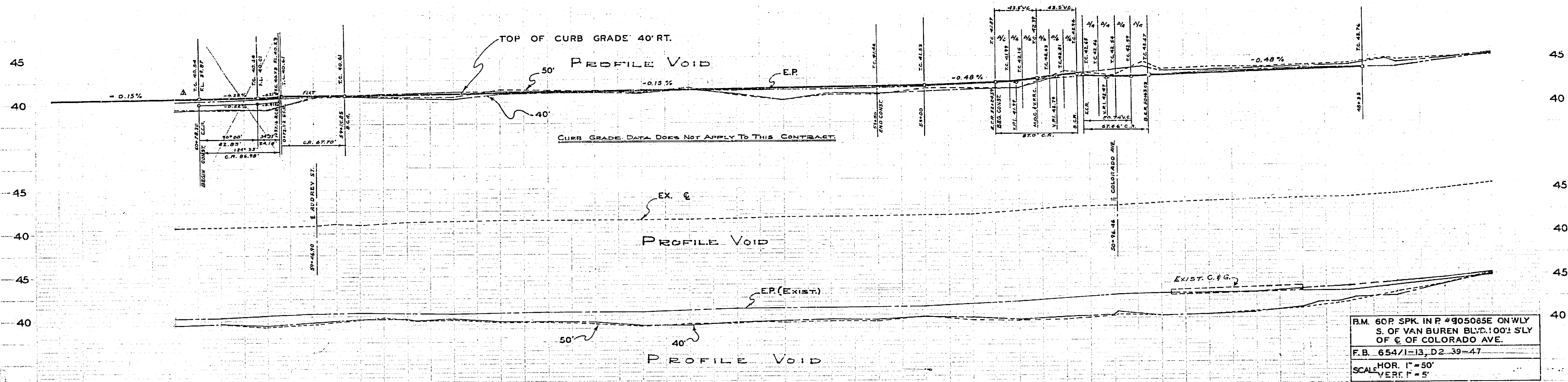
1:27

1:28

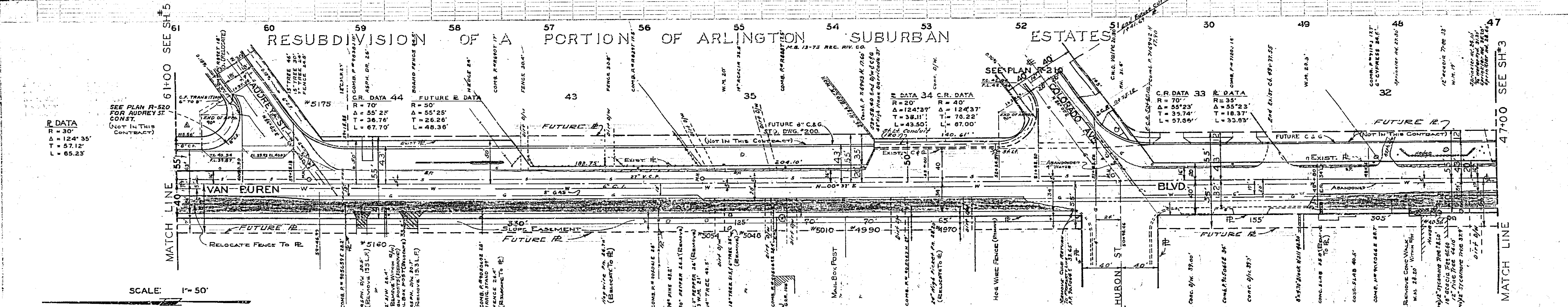
1:29

1:30

10000
1:1
1:1.5
1:2
1:3
1:4
1:5
1:6
1:7
1:8
1:9
1:10
1:11
1:12
1:13
1:14
1:15
1:16
1:17
1:18
1:19
1:20
1:21
1:22
1:23
1:24
1:25
1:26
1:27
1:28
1:29
1:30



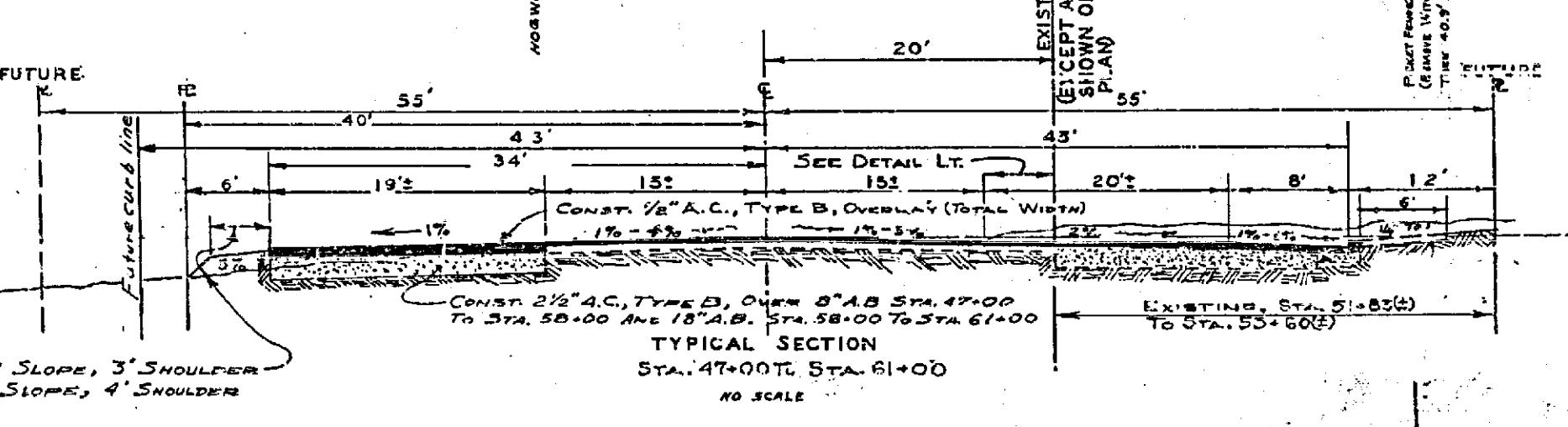
B.M. 60P SPK IN P #905085E ON WLY S. OF VAN BUREN BLVD. 100' SLY OF C. OF COLORADO AVE.
 F.B. 654/1-13, D2-39-47
 HOR. 1" = 50'
 SCALE VERT. 1" = 5'



NOTE:
 1. TRIM EDGE OF EXIST. PAVING TO CLEAN STRAIGHT LINE CONST. MATCH UP PAVING AS SHOWN, AND OVERLAY EXISTING PAVING AS DIRECTED IN THE FIELD TO PRODUCE A SMOOTH CROWN SECTION.

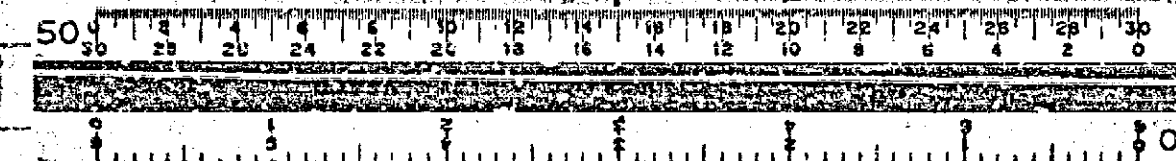
SCALE: 1" = 50'

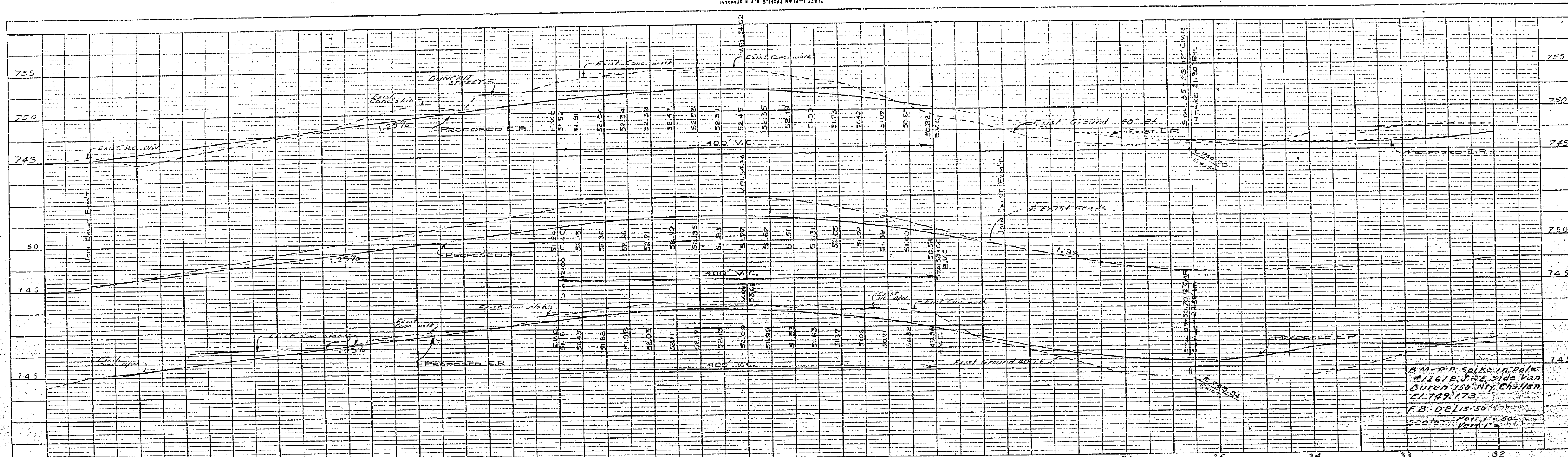
TYPICAL SECTION
 STA. 34+56 ± TO STA. 37+25 ±
 STA. 47+00 ± TO STA. 50+76 ±
 STA. 52+05 ± TO STA. 67+30 ±



- LEGEND
- CONST. 2 1/2" A.C., TYPE B, OVER 8" A.B. & PRIME COAT STA. 47+00 TO STA. 50+00.
 - CONST. 2 1/2" A.C., TYPE B, OVER 18" A.B. & PRIME COAT STA. 58+00 TO STA. 61+00.
 - REMOVE EXIST. A.C. PAVEMENT & CONST. 2 1/2" A.C., TYPE B, OVER SPECIFIED A.B.
 - REMOVE EXIST. CURB SLABS.
 - CONST. 4" A.C. OVER NO. A.B.

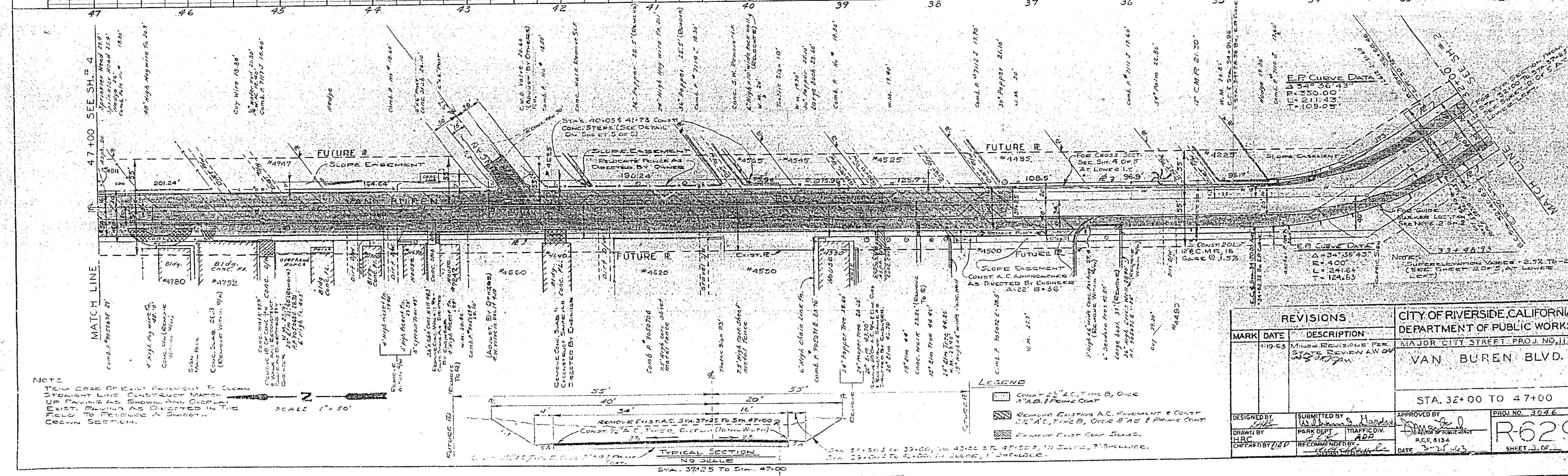
REVISIONS			CITY OF RIVERSIDE, CALIFORNIA DEPARTMENT OF PUBLIC WORKS	
MARK	DATE	DESCRIPTION	MAJOR CITY STREET PROJ. NO. 113	
		MINOR REVISIONS PER STA. REVIEW AND CAP	VAN BUREN BLVD.	
			STA. 47+00 TO 61+00	
DESIGNED BY	SUBMITTED BY	APPROVED BY	PROJ. NO.	3016
DRAWN BY	PARK DEPT.	TRAFFIC DIV.	R629	
CHECKED BY	RECOMMENDED BY	DATE	SHEET 4 OF 5	





DATE	BY	DESCRIPTION

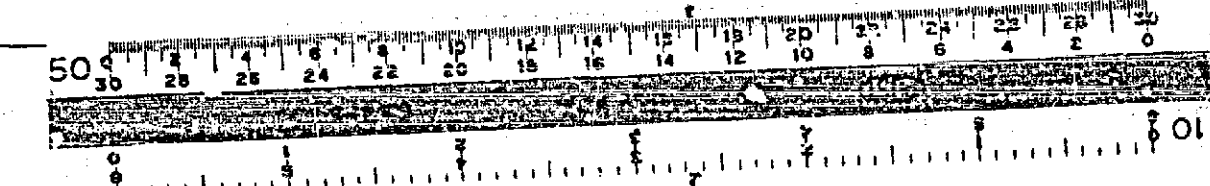
A.M. - R.D. SPIKE IN POLE #12612, S.E. SIDE VAN BUREN 150' N.Y. CHAIN 21,749.173
 R.B. DE/15-50
 SCALE: VERT. 1" = 10'

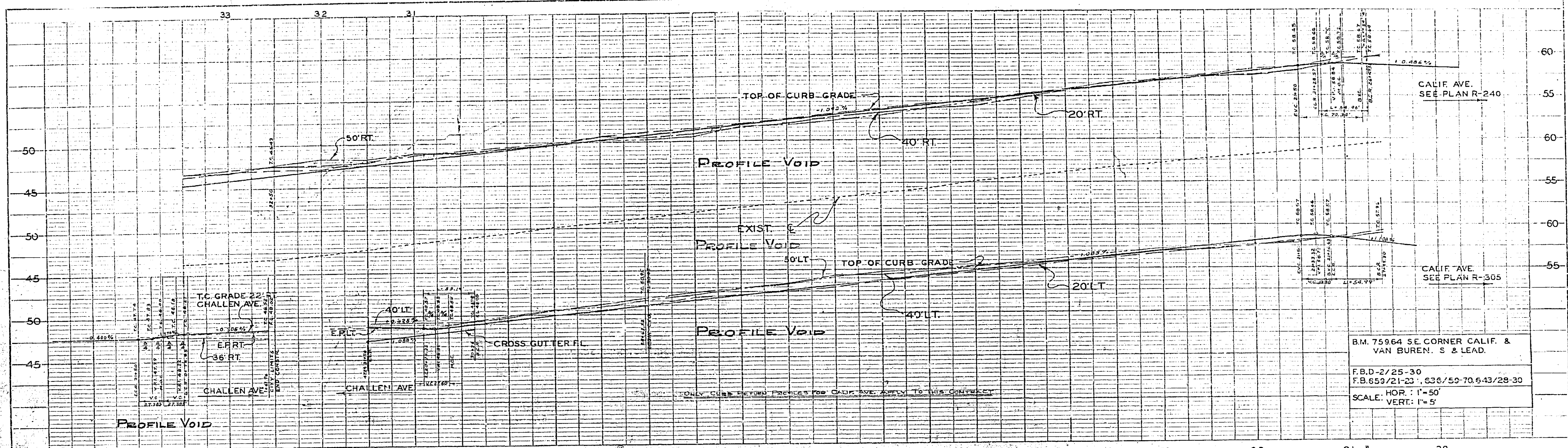


DATE	BY	DESCRIPTION

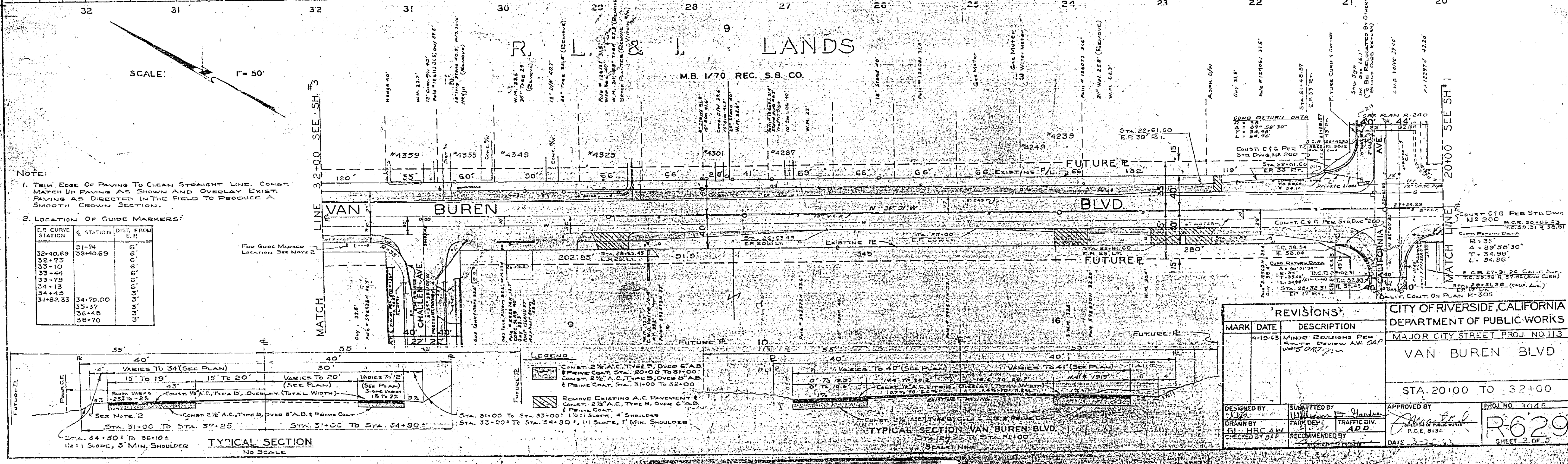
REVISIONS			CITY OF RIVERSIDE, CALIFORNIA DEPARTMENT OF PUBLIC WORKS	
MARK	DATE	DESCRIPTION	MAJOR CITY STREET PROJ. NO. 113	
			VAN BUREN BLVD.	
			STA. 32+00 TO 47+00	
DESIGNED BY	SUBMITTED BY	APPROVED BY	PHOJ. NO.	2046
DRWN BY	PKR OPT	TRFIC DIV.	R629	
CHKD BY	RECOMMENDED BY	DATE	SHEET 3 OF 3	

NOTE
 1. TYPICAL SECTION OF EXIST. PAVEMENT TO CLEAN
 UP PAINTING AS SHOWN IN PLAN. ALL
 EXIST. CURBS TO BE RECONSTRUCTED TO THE
 CROWN OF THE ROAD.
 2. ALL HIGH WIRE TO BE 24" HIGH.
 3. ALL HIGH WIRE TO BE 24" HIGH.
 4. ALL HIGH WIRE TO BE 24" HIGH.
 5. ALL HIGH WIRE TO BE 24" HIGH.
 6. ALL HIGH WIRE TO BE 24" HIGH.
 7. ALL HIGH WIRE TO BE 24" HIGH.
 8. ALL HIGH WIRE TO BE 24" HIGH.
 9. ALL HIGH WIRE TO BE 24" HIGH.
 10. ALL HIGH WIRE TO BE 24" HIGH.





B.M. 75964 SE. CORNER CALIF. & VAN BUREN. S & LEAD.
 F.B.D-2/25-30
 F.B.653/21-23, 636/53-70, 643/28-30
 SCALE: HOR: 1"=50'
 VERT: 1"=5'



NOTE:
 1. TRIM EDGE OF PAVING TO CLEAN STRAIGHT LINE. CONST. MATCH UP PAVING AS SHOWN AND OVERLAY EXIST. PAVING AS DIRECTED IN THE FIELD TO PRODUCE A SMOOTH CROWN SECTION.
 2. LOCATION OF GUIDE MARKERS:

F.P. CURVE STATION	STATION	DIST. FROM C.P.
32+40.69	31+74	0.00'
32+75	32+06.9	0.00'
33+10		0.00'
33+45		0.00'
33+79		0.00'
34+13		0.00'
34+48		0.00'
34+82.33	34+70.00	0.00'
	35+37	0.00'
	36+45	0.00'
	38+70	0.00'

LEGEND
 CHURN 2 1/2" A.C. TYPE B OVER 6" A.B.
 PRIME COAT STA. 20+00 TO 31+00
 CONST. 2 1/2" A.C. TYPE B OVER 6" A.B.
 PRIME COAT STA. 31+00 TO 32+00
 REMOVE EXISTING A.C. PAVEMENT & CONST. 2 1/2" A.C. TYPE B OVER 6" A.B.
 PRIME COAT STA. 31+00 TO STA. 37+25
 STA. 31+00 TO STA. 33+00: 1 1/2% SLOPE, 4' SHOULDER
 STA. 33+00 TO STA. 34+30: 1% SLOPE, 1' MIN. SHOULDER

TYPICAL SECTION VAN BUREN BLVD
 STA. 31+00 TO STA. 37+25
 STA. 37+25 TO STA. 41+00
 STA. 41+00 TO STA. 45+00

REVISIONS			CITY OF RIVERSIDE, CALIFORNIA DEPARTMENT OF PUBLIC WORKS	
MARK	DATE	DESCRIPTION	MAJOR CITY STREET PROJ. NO. 113	
4-19-63		Minor Revisions Per Survey Division A.W. GAP	VAN BUREN BLVD	
			STA. 20+00 TO 32+00	
			PROJ. NO. 3046	
DESIGNED BY	SUBMITTED BY	APPROVED BY	SHEET 2 OF 3	
DRAWN BY	PAVED BY	TRAFFIC DIV.		
CHECKED BY	RECOMMENDED BY	DATE		

PROJECT NO. 113
 SHEET NO. 2 OF 3
 DATE 11/15/63
 DRAWN BY HRC/CAW
 CHECKED BY HRC/CAW
 SUBMITTED BY [Signature]
 PAVED BY [Signature]
 RECOMMENDED BY [Signature]
 APPROVED BY [Signature]
 DATE 11/15/63