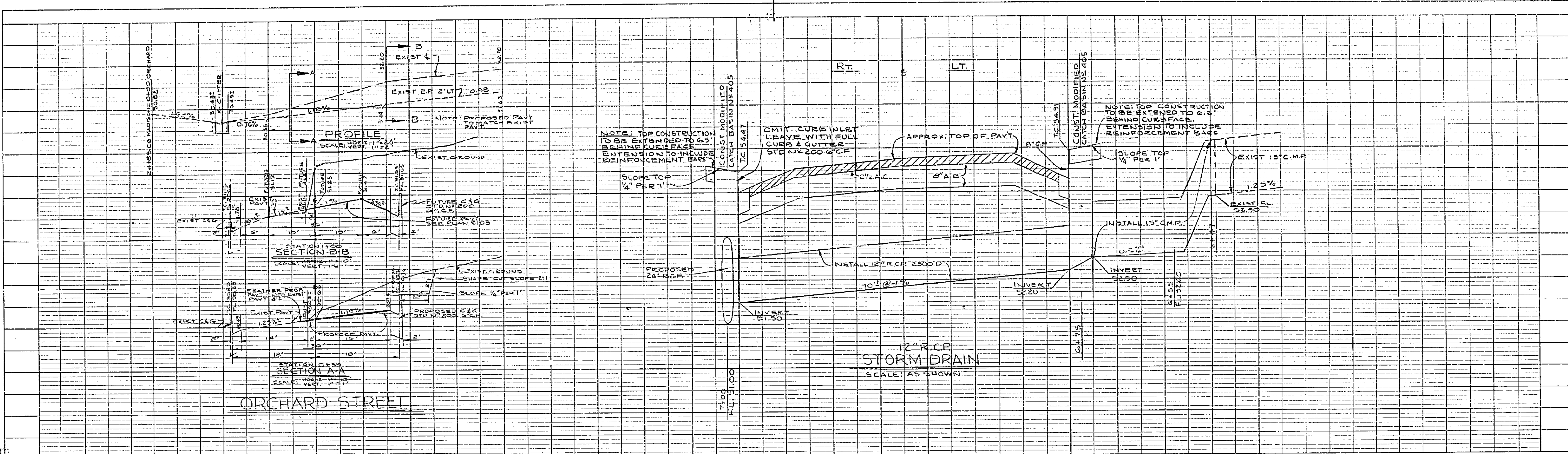
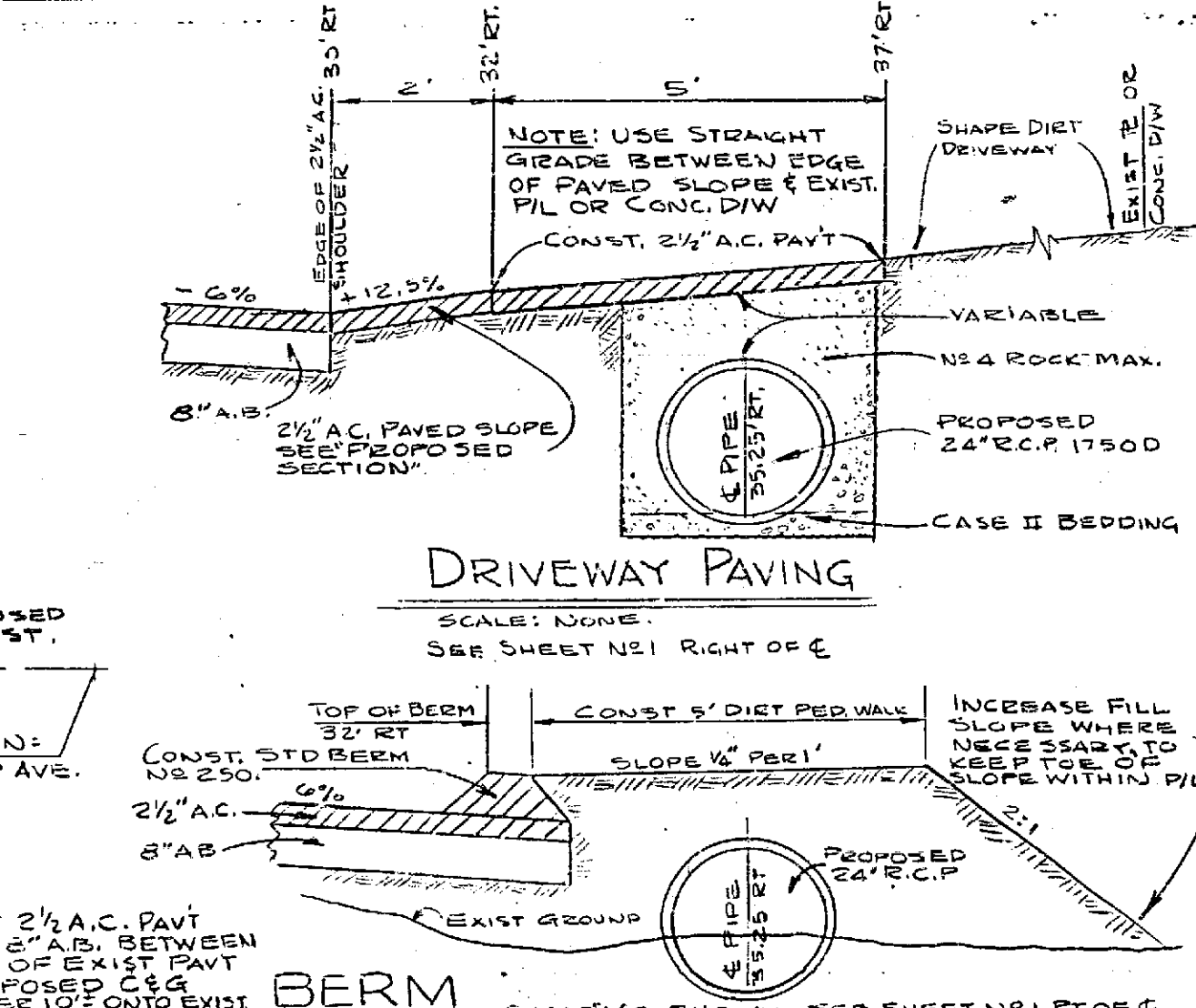
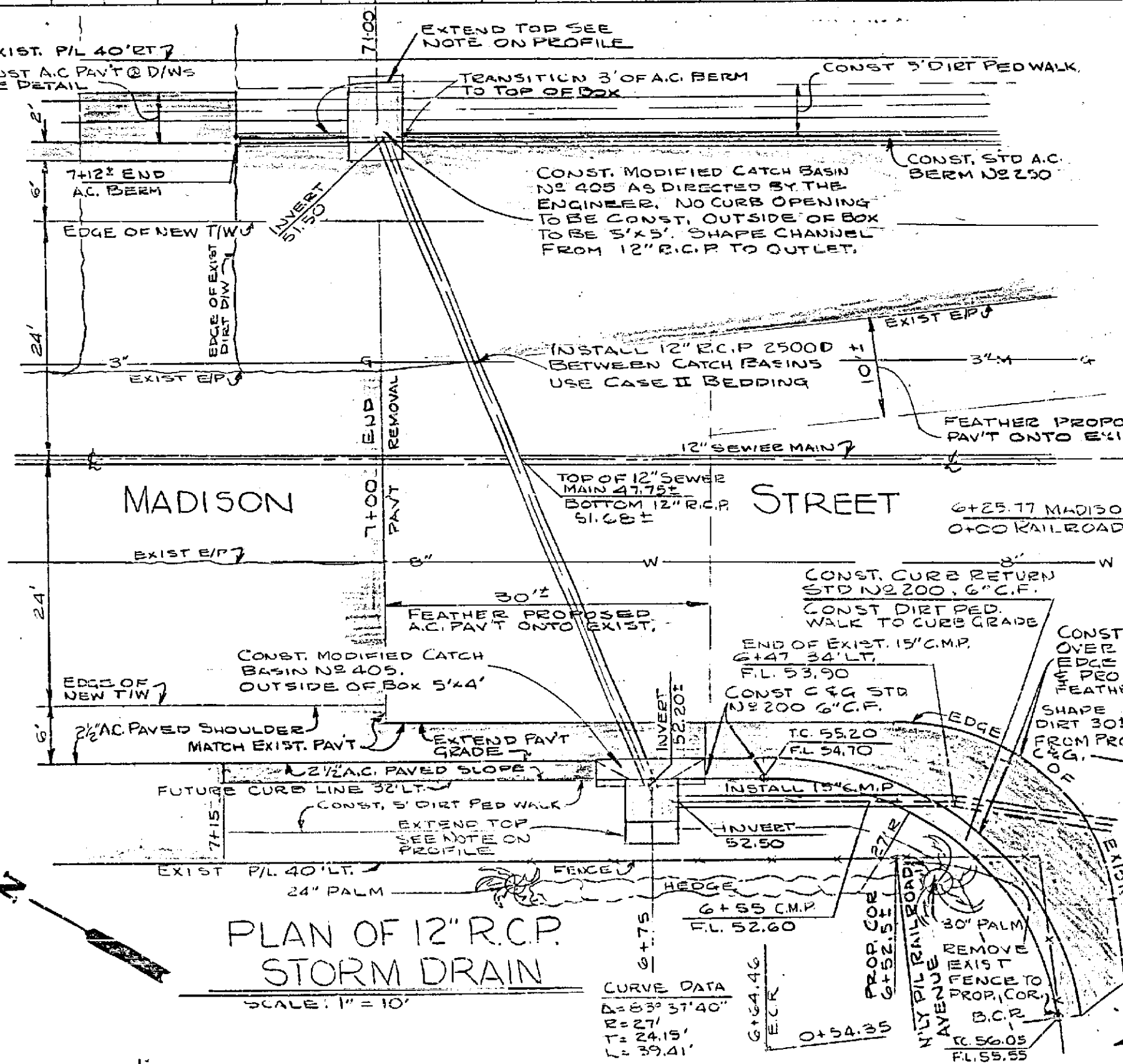
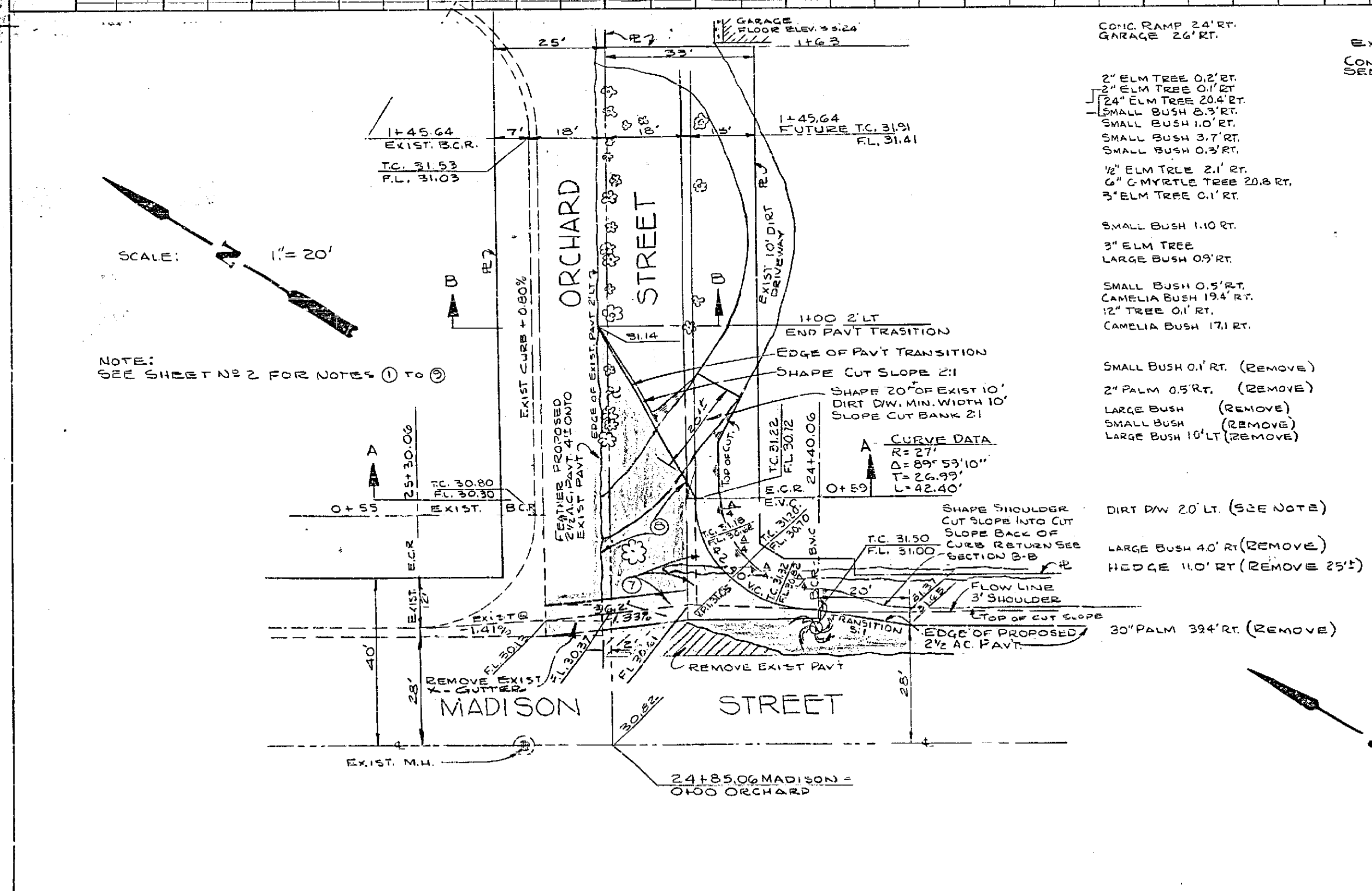


REVISIONS			CITY OF RIVERSIDE, CALIFORNIA DEPARTMENT OF PUBLIC WORKS
MARK	DATE	DESCRIPTION	
			MADISON STREET SANTA FERR. TO ARLINGTON AVE.
			BRIDGE SLAB CONSTRUCTION FOR PROPOSED STREET WIDENING
DESIGNED BY	SUBMITTED BY	APPROVED BY	ACCT NO 3053
DRAWN BY	LAURENCE HARRISON	[Signature]	R-639
CHECKED BY	RECOMMENDED BY	DATE	SHEET 5 OF 7
		7-22-63	



NO.	DATE	DESCRIPTION
1		AS SHOWN



NO.	DATE	DESCRIPTION
1		AS SHOWN

REVISIONS		
MARK	DATE	DESCRIPTION

CITY OF RIVERSIDE, CALIFORNIA
 DEPARTMENT OF PUBLIC WORKS

MADISON STREET
 SANTA FE RR. TO ARLINGTON AVE

DETAIL SHEET

DESIGNED BY: [Signature]
 DRAWN BY: [Signature]
 CHECKED BY: [Signature]

SUBMITTED BY: [Signature]
 PARK DEPT: [Signature]
 RECOMMENDED BY: [Signature]

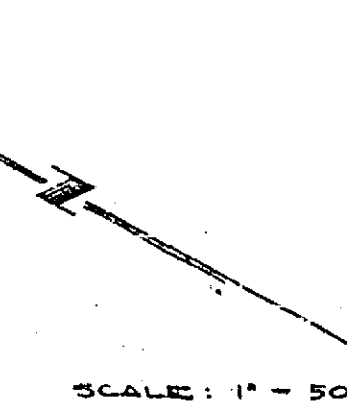
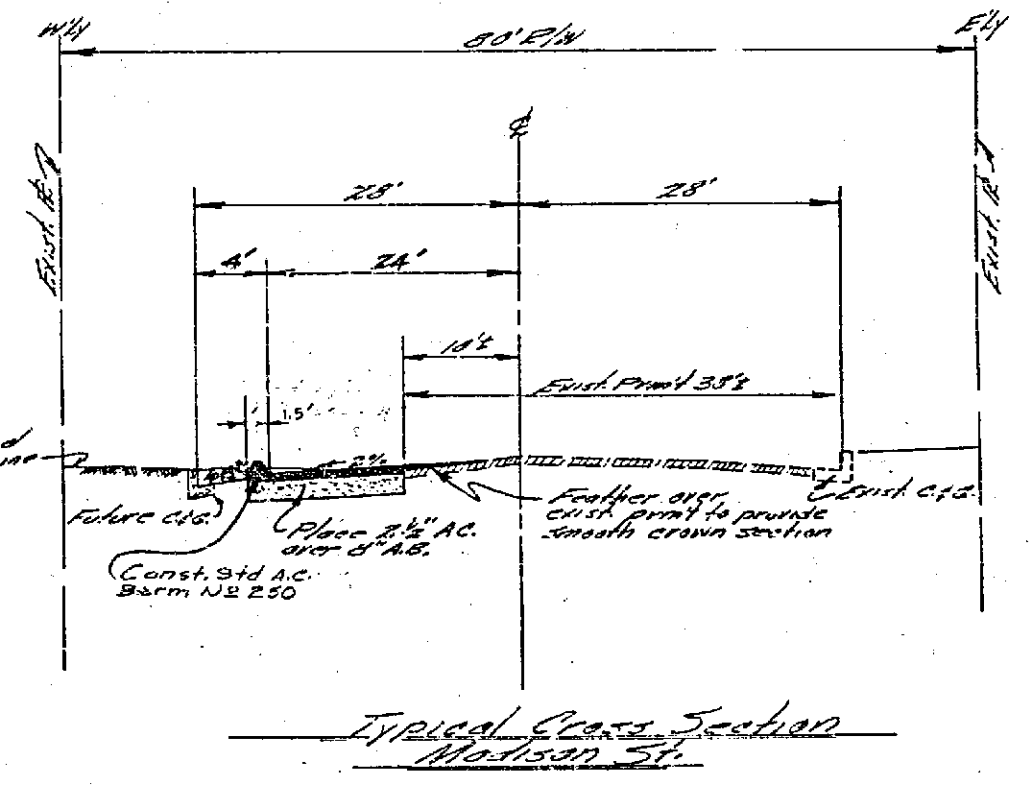
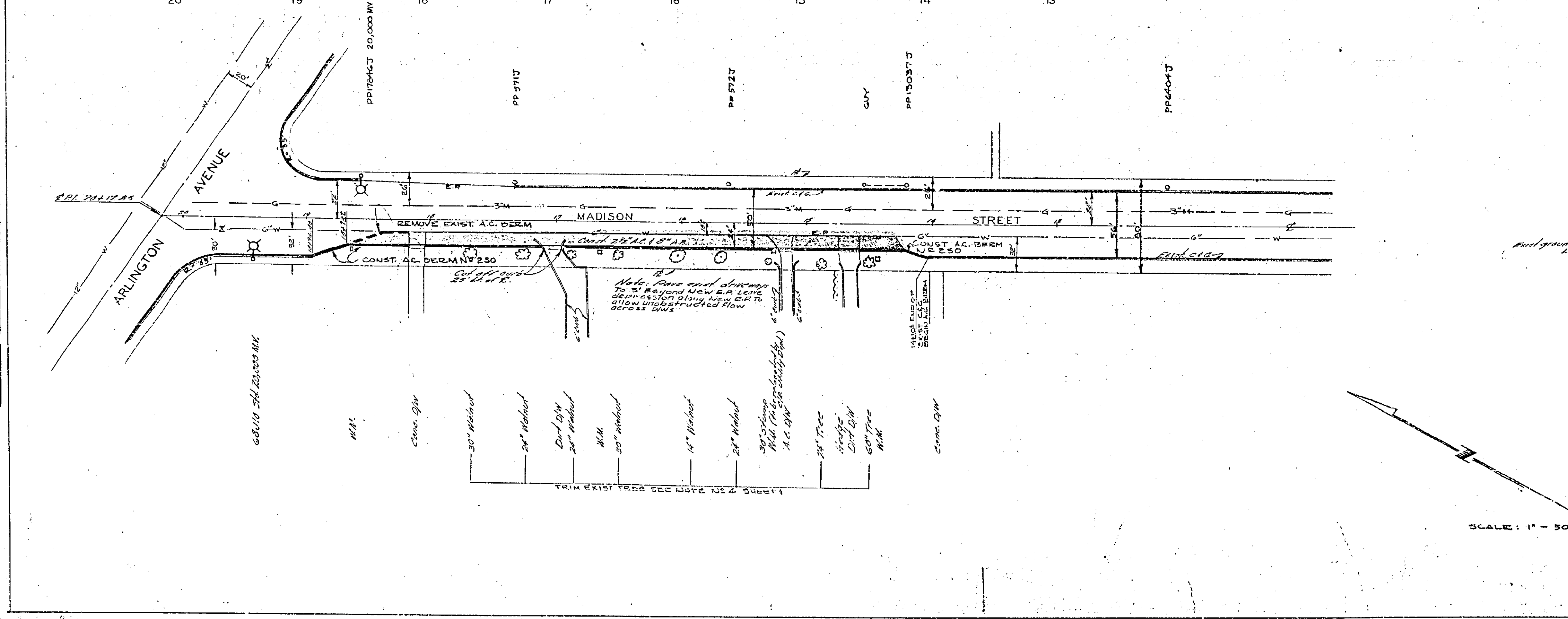
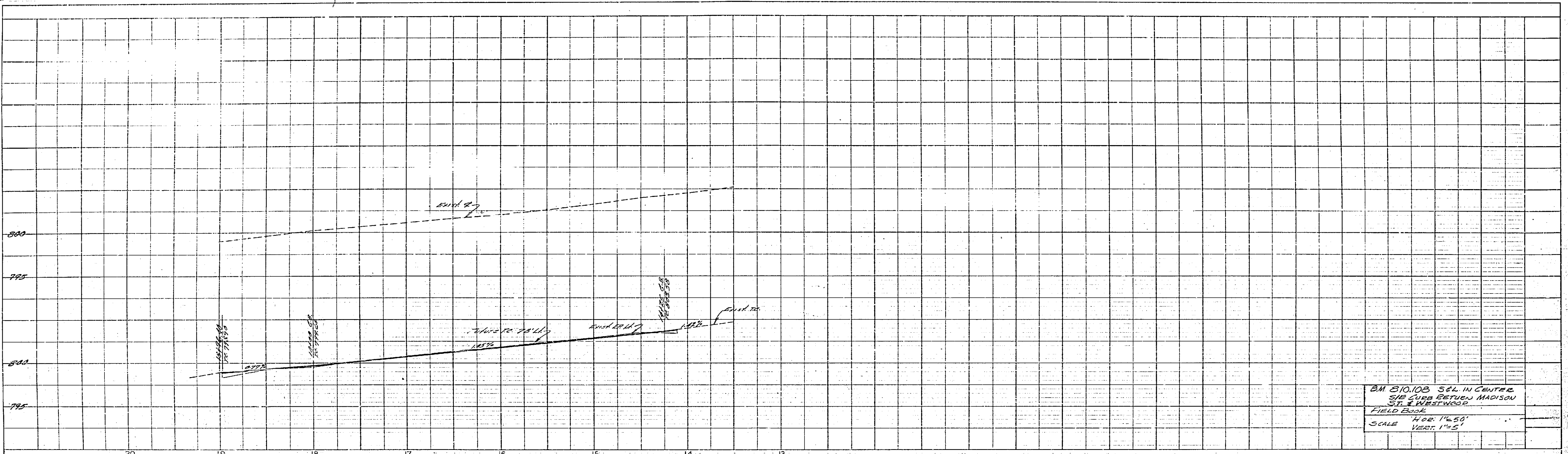
APPROVED BY: [Signature]
 DATE: 1-11-11

PROJ. NO. 30-53
R639
 SHEET 2 OF 7

THE ENGINEER HAS CHECKED THIS PLAN FOR CONFORMANCE WITH THE STANDARD SPECIFICATIONS FOR PUBLIC WORKS, CITY OF RIVERSIDE, CALIFORNIA.

DATE	BY	REVISIONS

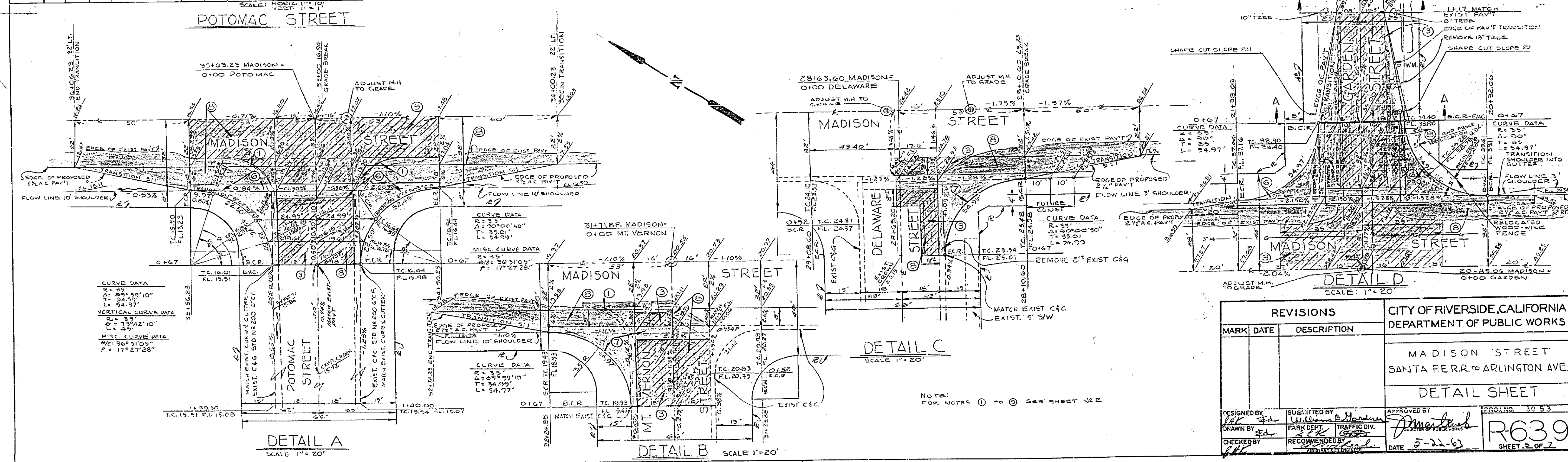
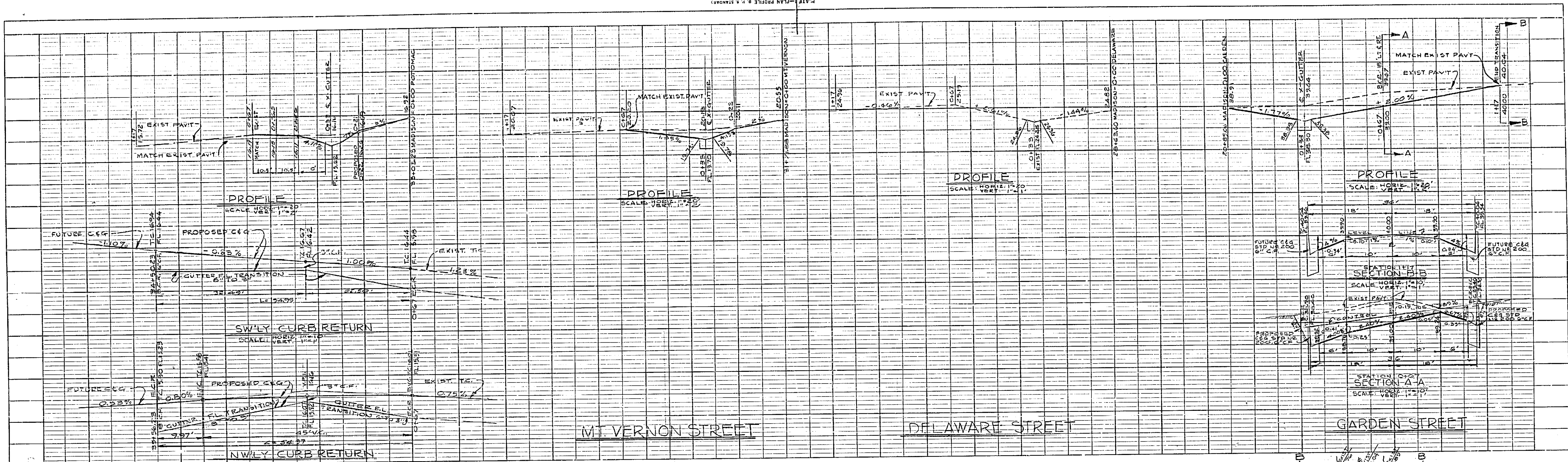
DATE	BY	REVISIONS



SCALE: 1" = 50'

REVISIONS			CITY OF RIVERSIDE, CALIFORNIA DEPARTMENT OF PUBLIC WORKS	
MARK	DATE	DESCRIPTION		
			MADISON STREET SANTA F.E.R.R. TO ARLINGTON AVE. STA. 13+00 TO ARLINGTON AVE.	
DESIGNED BY	SUBMITTED BY	APPROVED BY	PROJ. NO.	3053
DRAWN BY	PARK DEPT.	TRAFFIC DIV.	R-639	
CHECKED BY	RECOMMENDED BY	DATE	5-22-63	
			SHEET 4 OF 7	

504 THE ENGINEER HAS CHECKED THIS PLAN FOR CONFORMANCE WITH THE STANDARD SPECIFICATIONS FOR PUBLIC WORKS, CITY OF RIVERSIDE, CALIFORNIA.



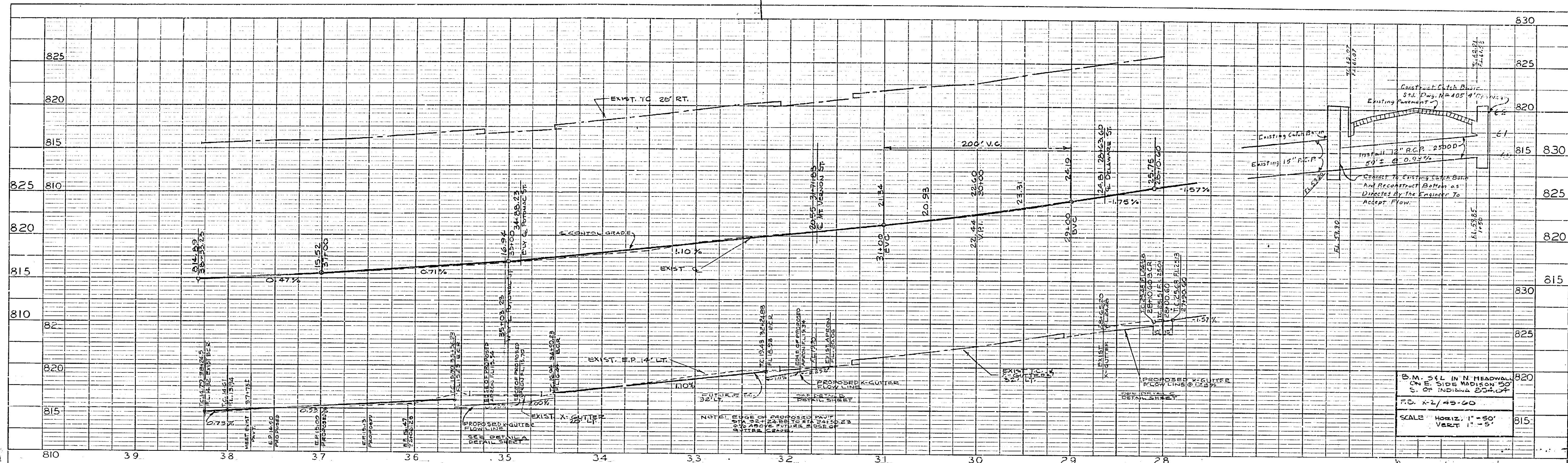
DATE	BY	REVISIONS

DATE	BY	REVISIONS

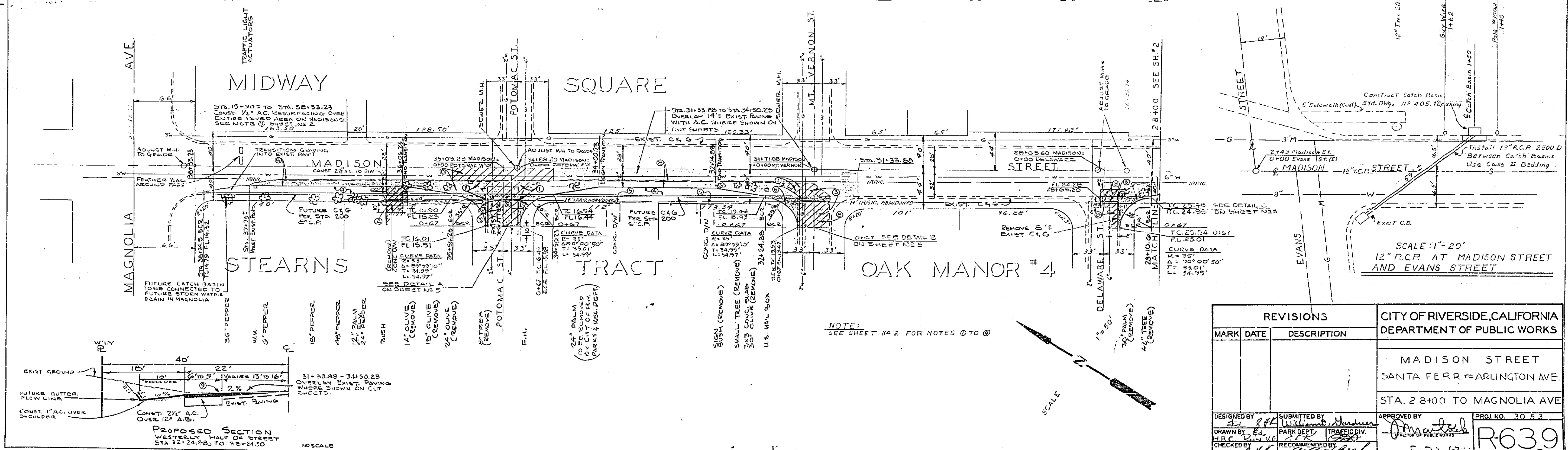
REVISIONS			CITY OF RIVERSIDE, CALIFORNIA DEPARTMENT OF PUBLIC WORKS
MARK	DATE	DESCRIPTION	

DESIGNED BY	SUBMITTED BY	APPROVED BY	PROJ. NO.
DRAWN BY	RECOMMENDED BY	DATE	R639
CHECKED BY			SHEET 3 OF 7

NOTE: FOR NOTES ① TO ③ SEE SHEET N22

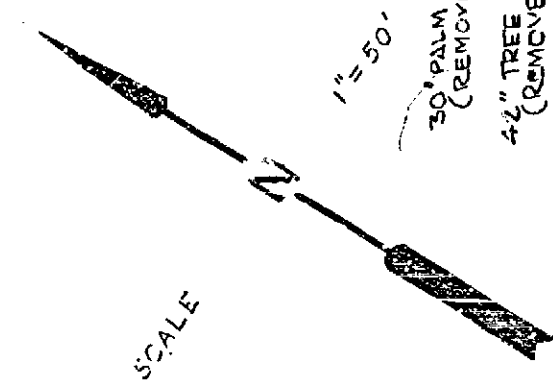


NO.	DATE	DESCRIPTION



NO.	DATE	DESCRIPTION

NOTE:
 SEE SHEET NO 2 FOR NOTES @ TO @



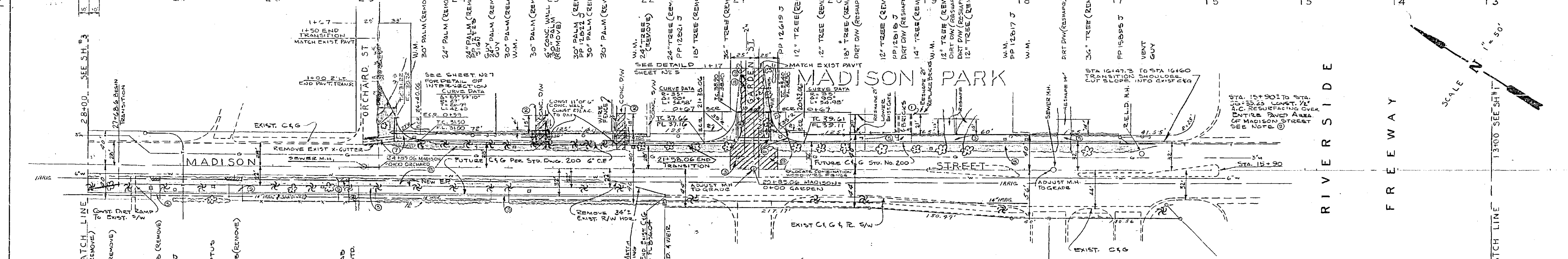
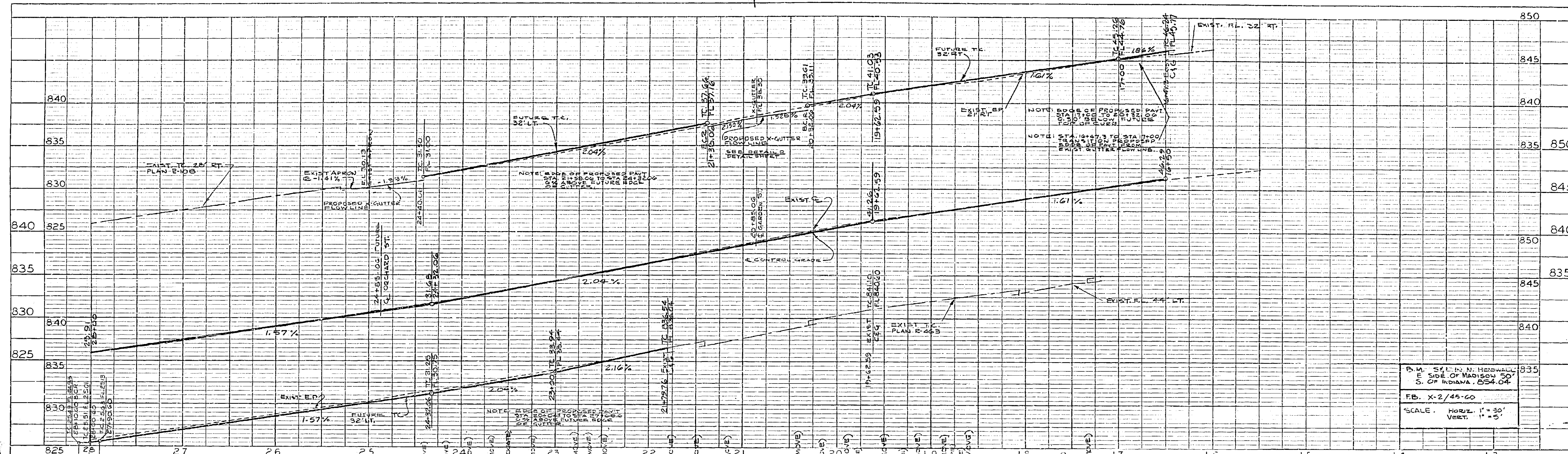
REVISIONS		
MARK	DATE	DESCRIPTION

CITY OF RIVERSIDE, CALIFORNIA
 DEPARTMENT OF PUBLIC WORKS

MADISON STREET
 SANTA FERR TO ARLINGTON AVE.
 STA. 28+00 TO MAGNOLIA AVE

DESIGNED BY: *[Signature]* SUBMITTED BY: *[Signature]* APPROVED BY: *[Signature]* PROJ. NO. 30 5 3
 DRAWN BY: *[Signature]* PARK DEPT. TRAFFIC DIV. RECOMMENDED BY: *[Signature]*
 CHECKED BY: *[Signature]* DATE: 5-22-63 SHEET 3 OF 7

R639



NOTES:

- REMOVE EXIST. CROSS GUTTER, APRON AND CURB & GUTTER.
- REMOVE EXIST. D/W AS NOTED AND REPLACE WITH STD US 302 APPROACH & D/W. [Hatched symbol]
- REMOVE EXIST. PAVING AND BASE AS INDICATED [Hatched symbol]
- GRADE TO MEET FUTURE GUTTER FLOW LINE. SEE PROPOSED SECTION STA. 23+00 TO 24+00 (B.C.R.) TO STA. 24+50 (B.C.R.)
- RESHAPE DIRT FROM EDGE OF PROPOSED PAVT TO PROPERTY LINE TO MEET EXIST. D/W. REPLACE BRICKS ALONG D/W EDGE AT STA. 19+53 & 19+11.
- CONST. 6" SLOTTED CROSS GUTTER & APRON PER STD DWS NR 221 AND CURB & GUTTER PER STD DWS NR 200, 6" C.P.
- CONST. 6" CROSS GUTTER (APRON) PER STD DWS NR 200 AND CURB & GUTTER STD DWS NR 200, 6" C.P.
- CONST. 2 1/2" ASPHALT CONCRETE PAVEMENT OVER 12" AGGREGATE BASE.
- RESURFACE ALL NEW PAVT AND EXIST PAVT, EXCEPT SHOULDER, BETWEEN STA. 19+01 STA. 20+33.8 WITH 1/2" A.C. OVERLAYING.

ALL CONSTRUCTION TO BE IN ACCORDANCE WITH STANDARD SPECIFICATIONS NO. 461 AND STANDARD DRAWINGS OF THE CITY OF RIVERSIDE, DEPT. OF PUBLIC WORKS.

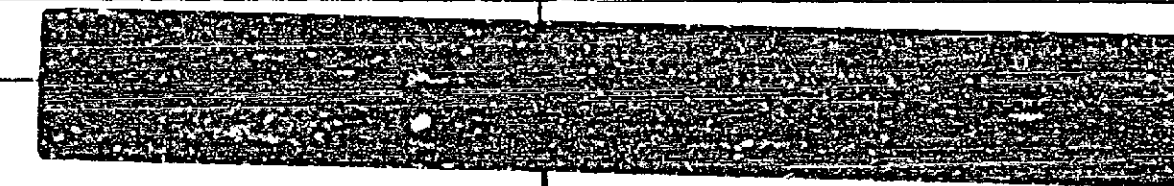
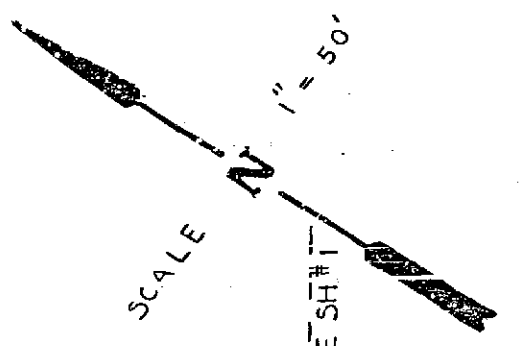
REVISIONS		CITY OF RIVERSIDE, CALIFORNIA DEPARTMENT OF PUBLIC WORKS	
MARK	DATE	DESCRIPTION	

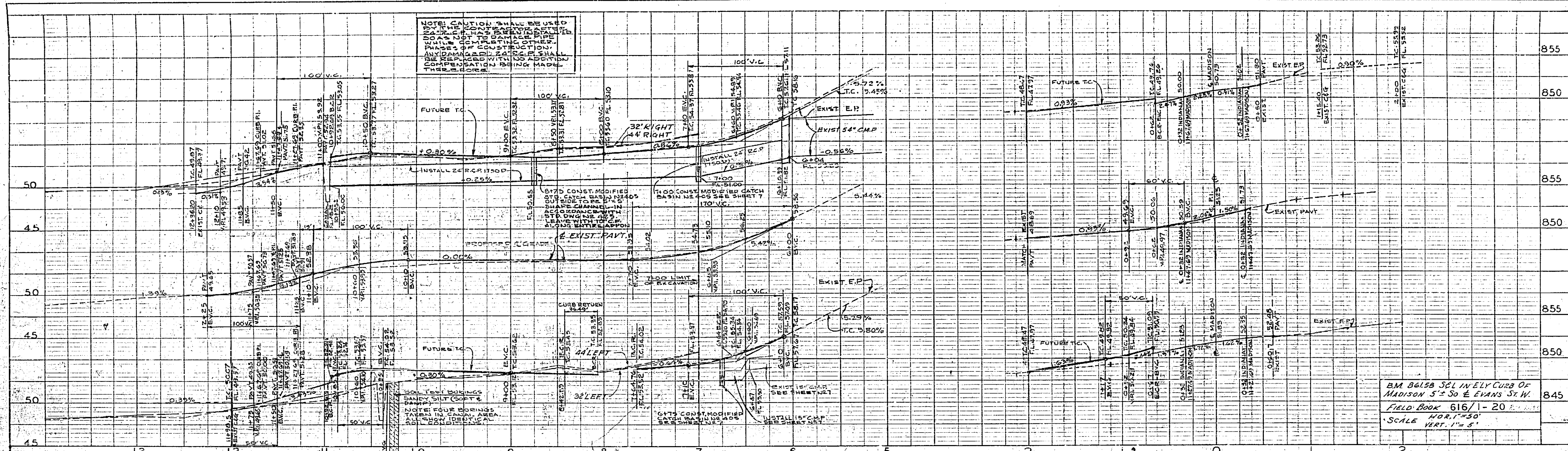
DESIGNED BY <i>[Signature]</i>	SUBMITTED BY <i>[Signature]</i>	APPROVED BY <i>[Signature]</i>	PRG. NO. 3053
DRAWN BY <i>[Signature]</i>	PARK DEPT. <i>[Signature]</i>	TRAFFIC DIV. <i>[Signature]</i>	R-639
CHECKED BY <i>[Signature]</i>	RECOMMENDED BY <i>[Signature]</i>	DATE 5-22-63	SHEET 2 OF 7

PROFILE	DATE

PLAN	DATE

B.M. 541 IN N. SIDEWALK
E. SIDE OF MADISON ST
S. OF INDIANA, 634.04
F.B. X-2/45-60
SCALE: HORIZ. 1" = 30'
VERT. 1" = 5'

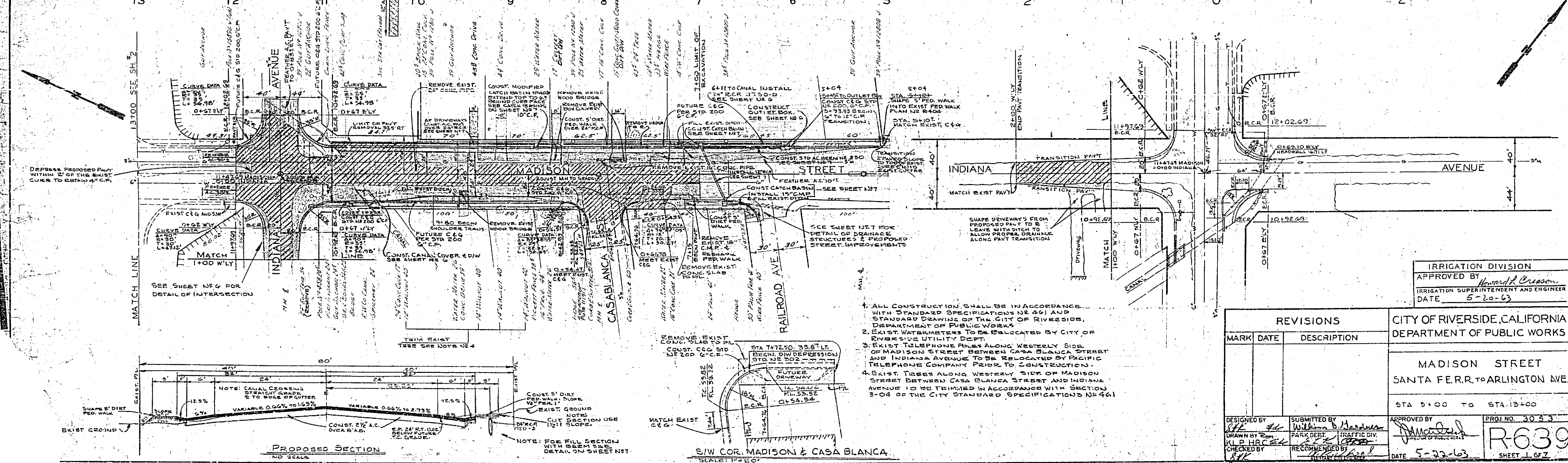




PROFILE

DATE	
BY	
CHECKED	
APPROVED	

BM 6015B SGL IN ELY CURB OF MADISON 5'± So E Evans St. W. FIELD BOOK 616/1-20 SCALE HOR. 1"=50' VERT. 1"=5'



PLAN

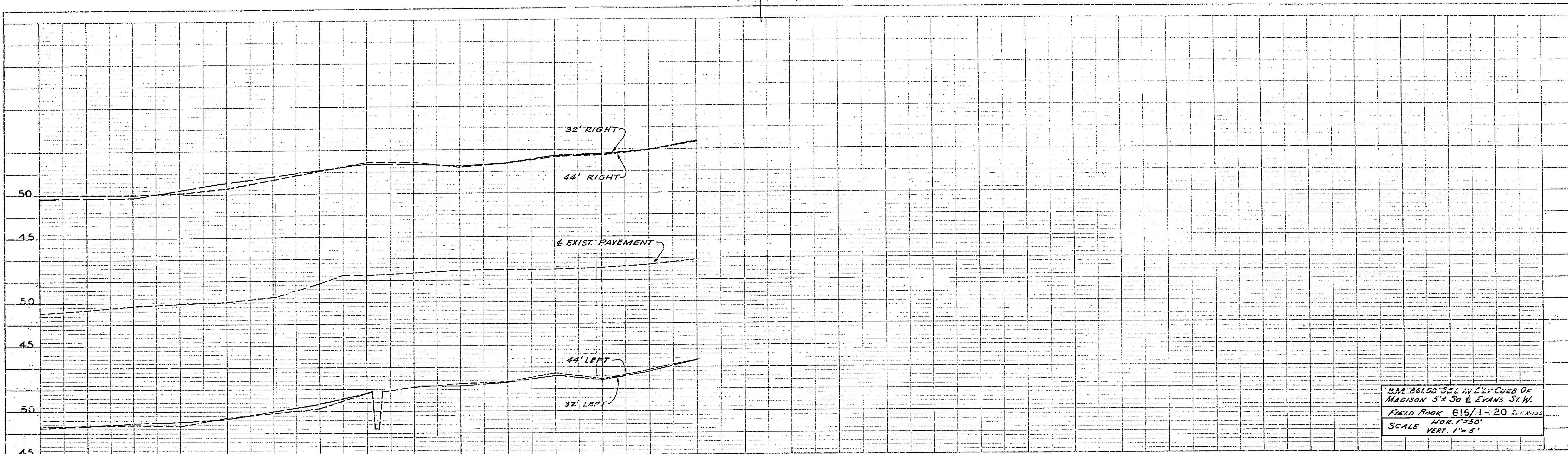
DATE	
BY	
CHECKED	
APPROVED	

IRRIGATION DIVISION
APPROVED BY *Harold Cresson*
IRRIGATION SUPERINTENDENT AND ENGINEER
DATE 5-20-63

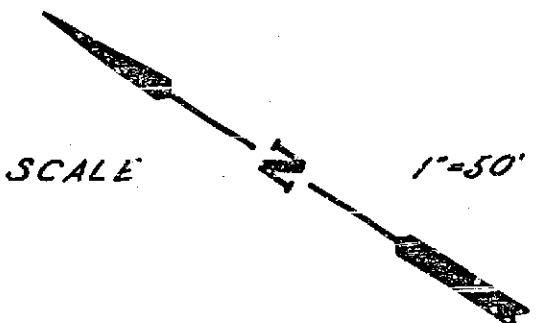
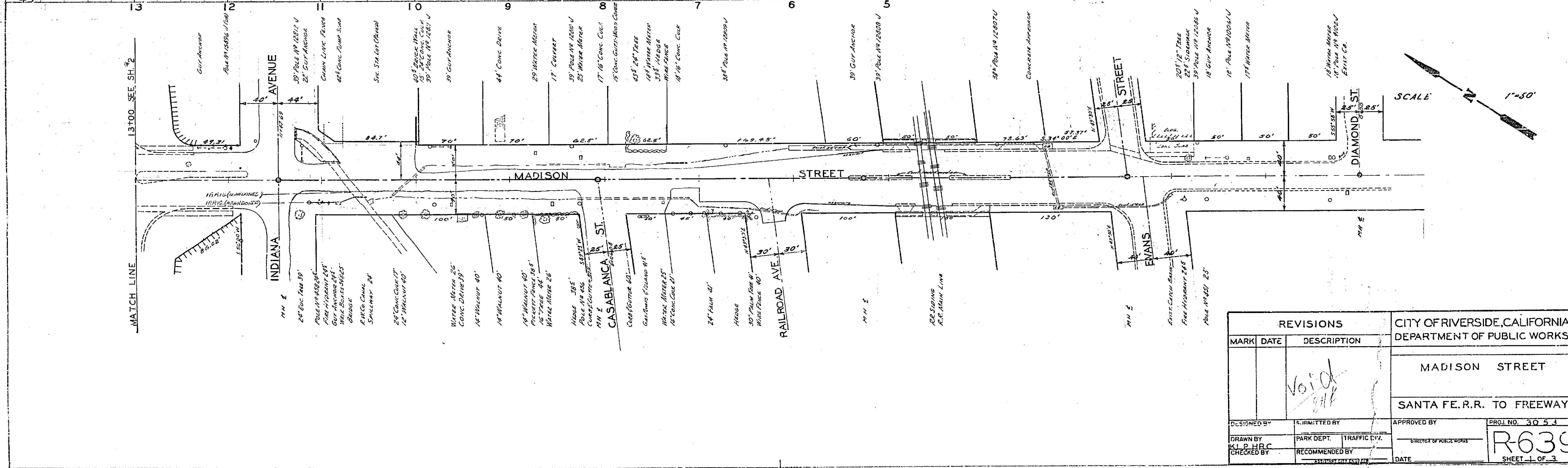
1. ALL CONSTRUCTION SHALL BE IN ACCORDANCE WITH STANDARD SPECIFICATIONS NO. 401 AND STANDARD DRAWINGS OF THE CITY OF RIVERSIDE, DEPARTMENT OF PUBLIC WORKS.
2. EXIST WATER METERES TO BE RELOCATED BY CITY OF RIVERSIDE UTILITY DEPT.
3. EXIST TELEPHONE PILES ALONG WESTEYLY SIDE OF MADISON STREET BETWEEN CASA BLANCA STREET AND INDIANA AVENUE TO BE RELOCATED BY PACIFIC TELEPHONE COMPANY PRIOR TO CONSTRUCTION.
4. EXIST TREES ALONG WESTEYLY SIDE OF MADISON STREET BETWEEN CASA BLANCA STREET AND INDIANA AVENUE TO BE REMOVED IN ACCORDANCE WITH SECTION 3-04 OF THE CITY STANDARD SPECIFICATIONS NO. 401.

REVISIONS		CITY OF RIVERSIDE, CALIFORNIA DEPARTMENT OF PUBLIC WORKS
MARK	DATE	

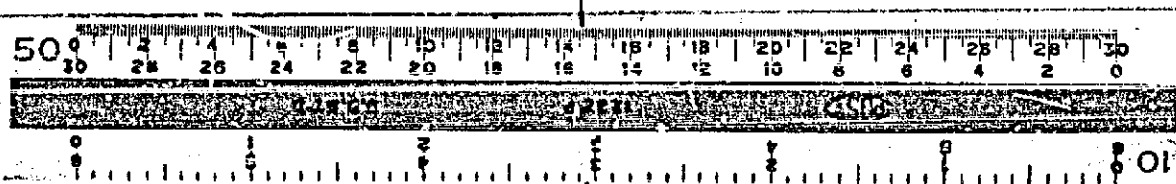
DESIGNED BY <i>W. H. R. C.</i>	SUBMITTED BY <i>W. H. R. C.</i>	APPROVED BY <i>Harold Cresson</i>	PROJ. NO. 30 5 3
DRAWN BY <i>W. H. R. C.</i>	PARK DEPT. <i>TRAFFIC DIV.</i>	DATE 5-22-63	R639
CHECKED BY <i>W. H. R. C.</i>	RECOMMENDED BY <i>W. H. R. C.</i>		SHEET 1 OF 7



BAR BOLEO SET IN CITY CURB OF
MADISON 5' S. OF EVANS ST. W.
FIELD BOOK 616/1-20 REF. 2-135
HOR. 1"=50'
SCALE VERT. 1"=5'



REVISIONS			CITY OF RIVERSIDE, CALIFORNIA DEPARTMENT OF PUBLIC WORKS	
MARK	DATE	DESCRIPTION	MADISON STREET	
		VOID	SANTA FE R.R. TO FREEWAY	
DESIGNED BY	APPROVED BY	PROJECT NO. 3053		R-639 SHEET 1 OF 3
DRAWN BY K.P.H.R.C.	PARK DEPT. TRAFFIC DIV.	DIRECTOR OF PUBLIC WORKS		
CHECKED BY	RECOMMENDED BY	DATE		



FILE NO.	
DATE	
BY	
CHECKED BY	
APPROVED BY	

PLAN	
DATE	
BY	
CHECKED BY	
APPROVED BY	