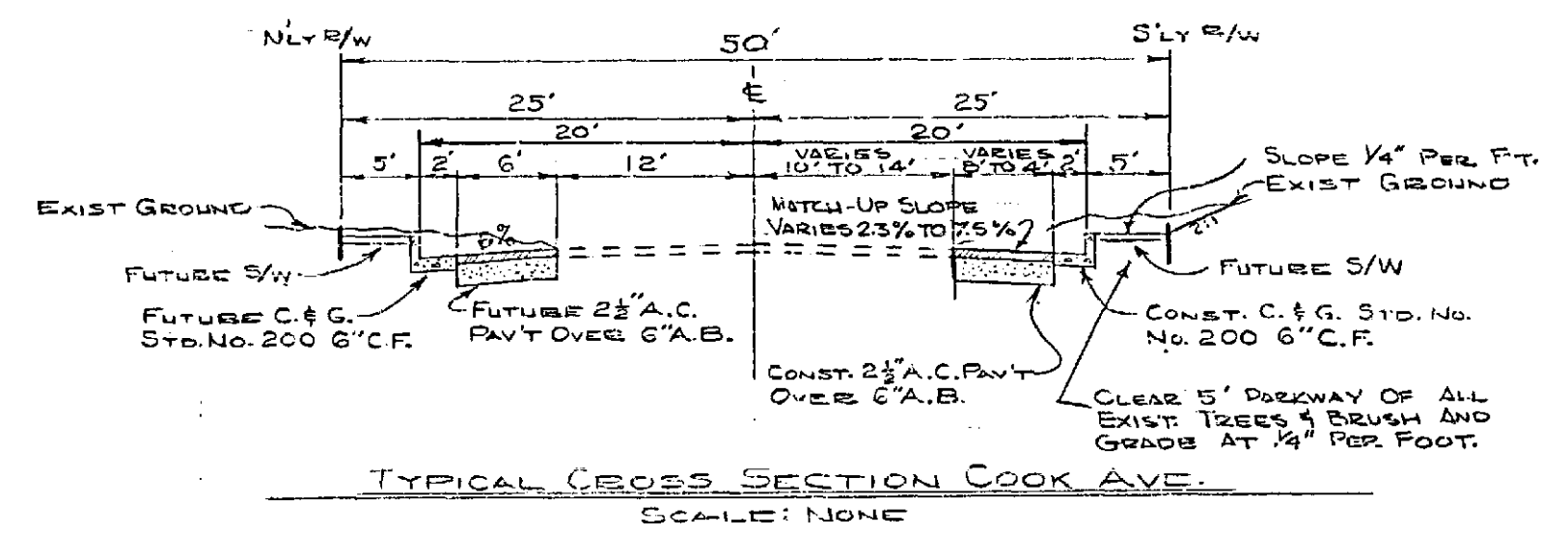
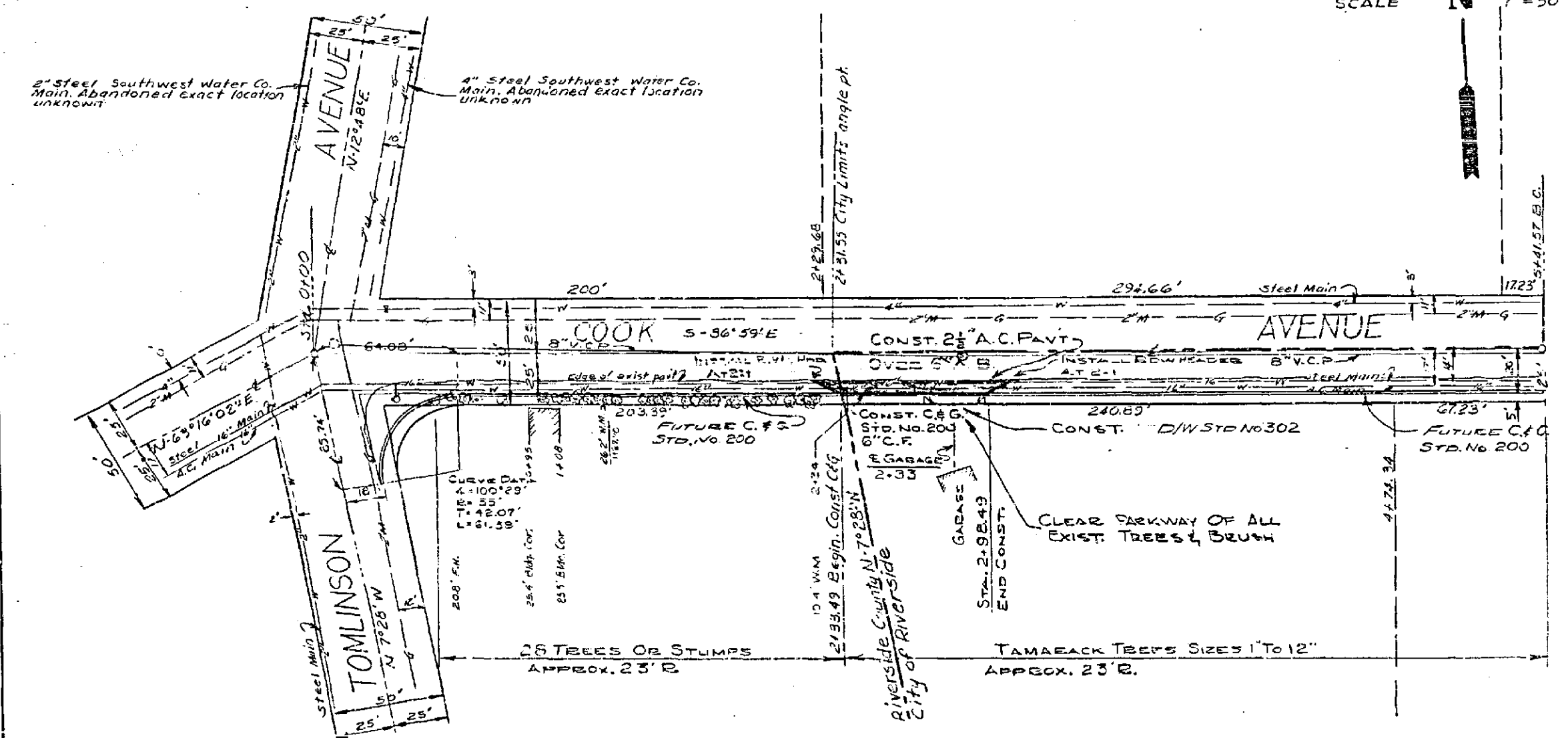


PROFILE	DATE

- NOTES
1. ALL CONSTRUCTION SHALL BE IN ACCORDANCE WITH THE CITY OF RIVERSIDE STANDARD SPECIFICATION No. 401.
  2. FROM EDGE OF EXIST. PAVING TO A CLEAN, STRAIGHT LINE AND OVERLAY AS DIRECTED IN THE FIELD, TO PRODUCE A SMOOTH CROWN SECTION.



REVISIONS		CITY OF RIVERSIDE, CALIFORNIA DEPARTMENT OF PUBLIC WORKS	
MARK	DATE	DESCRIPTION	
		COOK AVENUE FROM TOMLINSON AVENUE ELY	
DESIGNED BY <i>[Signature]</i>	SUBMITTED BY <i>[Signature]</i>	APPROVED BY <i>[Signature]</i>	PROJ. NO. 1012
DRAWN BY <i>[Signature]</i>	PARK DEPT.	TRAFFIC DIV.	R-643
CHECKED BY <i>[Signature]</i>	RECOMMENDED BY <i>[Signature]</i>	DATE 2-18-63	SHEET 1 OF 1