

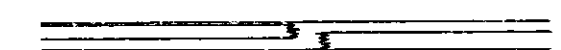
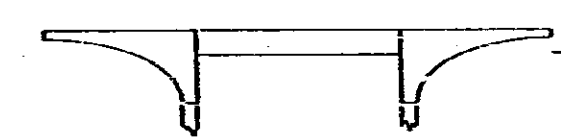
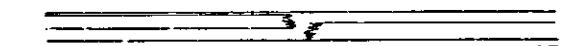
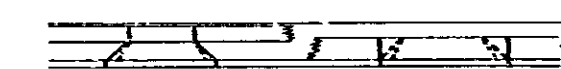
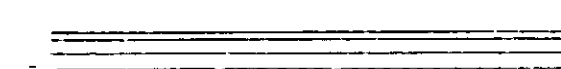
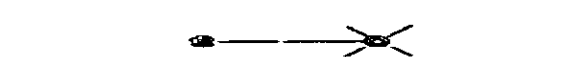
ASSESSMENT NO. 498

DIAGRAM

EXHIBITING FOREST STREET IMPROVEMENT DISTRICT
IN THE CITY OF RIVERSIDE, CALIFORNIA, AND THE WORK WHICH HAS BEEN DONE
PURSUANT TO THE CONTRACT BETWEEN THE SUPERINTENDENT OF STREETS OF
SAID CITY AND E.L. YEAGER CONSTRUCTION COMPANY, INC. DATED DECEMBER 12, 1963,
FOR THE CONSTRUCTION OF STREET IMPROVEMENTS.

AS IS MORE PARTICULARLY DESCRIBED IN SAID CONTRACT, TO WHICH REFERENCE
IS HEREBY MADE FOR FURTHER PARTICULARS.
SAID DIAGRAM ALSO SHOWS EACH SEPARATE LOT OR PARCEL OF LAND WITHIN THE
LIMITS OF THE ASSESSMENT DISTRICT, AND THE DIMENSIONS OF EACH SUCH LOT OR
PARCEL OF LAND, AND THE RELATIVE LOCATION OF THE SAME TO THE WORK DONE.
EACH LOT OR PARCEL OF LAND IS NUMBERED IN RED INK TO CORRESPOND TO THE
RED INK NUMBERS IN THE ASSESSMENT.
HEREIN FIGURES NEXT TO PROPERTY LINES SHOW LENGTH OF SAID LINES IN FEET
AND DECIMALS THEREOF.
THE MARK (') MEANS FEET.
PROPERTY LINES THAT DIFFER FROM THE RECORDED SUBDIVISIONS ARE SHOWN BY
BROKEN LINES.
THE DISTRICT BENEFITED IS BOUNDED BY A HEAVY DASHED LINE.
PROPERTY INCLUDED IN THIS ASSESSMENT IS SHOWN ON THE FOLLOWING RECORD-
ED MAPS:
SANTA FE TRACT - M.B. 6, PG. 14, RECORDS OF SAN BERNARDINO COUNTY.
BELLA VISTA PLAT - M.B. 5, PG. 106, RECORDS OF RIVERSIDE COUNTY.

HEREIN THE DIFFERENT KINDS OF WORK
PERFORMED ARE SHOWN AS FOLLOWS:

-  --- CURB AND GUTTER
-  --- CROSS GUTTER AND APRONS
-  --- CONCRETE SIDEWALK
-  --- DRIVEWAY APPROACHES
-  --- CONCRETE BLOCK RETAINING WALL
-  --- ORNAMENTAL STREET LIGHTS

HERE FOLLOWS A STATEMENT OF AMOUNTS OF
DIFFERENT KINDS OF WORK DONE PURSUANT TO
THE HERE-IN-BEFORE IDENTIFIED CONTRACT
AND TO RESOLUTION OF INTENTION NO. 9729,
ADOPTED BY THE CITY COUNCIL OF THE CITY
OF RIVERSIDE, CALIFORNIA ON THE 21ST DAY
OF JULY, 1963, AS MODIFIED BY RESOLUTION
NO. 9824, ADOPTED BY THE CITY COUNCIL OF
THE CITY OF RIVERSIDE, CALIFORNIA ON THE
15TH DAY OF OCTOBER, 1963.

- L.S. EARTHWORK
- 517 S.F. CROSS GUTTER AND APRONS - STD. DWG. NO. 2:20
- 645 L.F. CURB AND GUTTER - STD. DWG. NO. 200
- 20 L.F. REDWOOD HEADERS
- 155 C.Y. AGGREGATE BASE MATERIAL
- 154.30 TON ASPHALT CONCRETE
- 8674 S.F. FOG SEAL COAT
- 2825 S.F. CONCRETE SIDEWALK - STD. DWG. NOS. 325 AND 350 (MODIFIED).
- 945 S.F. DRIVEWAY APPROACH - STD. DWG. NO. 302
- 167 S.F. CONCRETE BLOCK RETAINING WALL
- L.S. ORNAMENTAL STREET LIGHTS

I HEREBY CERTIFY THAT THE ABOVE WORK WAS DONE IN ACCORDANCE
WITH LINES AND GRADES FURNISHED OR APPROVED BY ME, AND THAT
THE DIAGRAM OF THE ASSESSMENT DISTRICT AND THE QUANTITIES
OF WORK SHOWN HEREON ARE CORRECT.


CITY ENGINEER OF THE
CITY OF RIVERSIDE, CALIFORNIA

DIAGRAM RECEIVED:

THIS DAY OF , 19 .

SUPERINTENDENT OF STREETS OF THE
CITY OF RIVERSIDE, CALIFORNIA

RECORDED:
AT O'CLOCK, .M.,
THIS DAY OF , 19 .

SUPERINTENDENT OF STREETS OF THE
CITY OF RIVERSIDE, CALIFORNIA

Handwritten initials

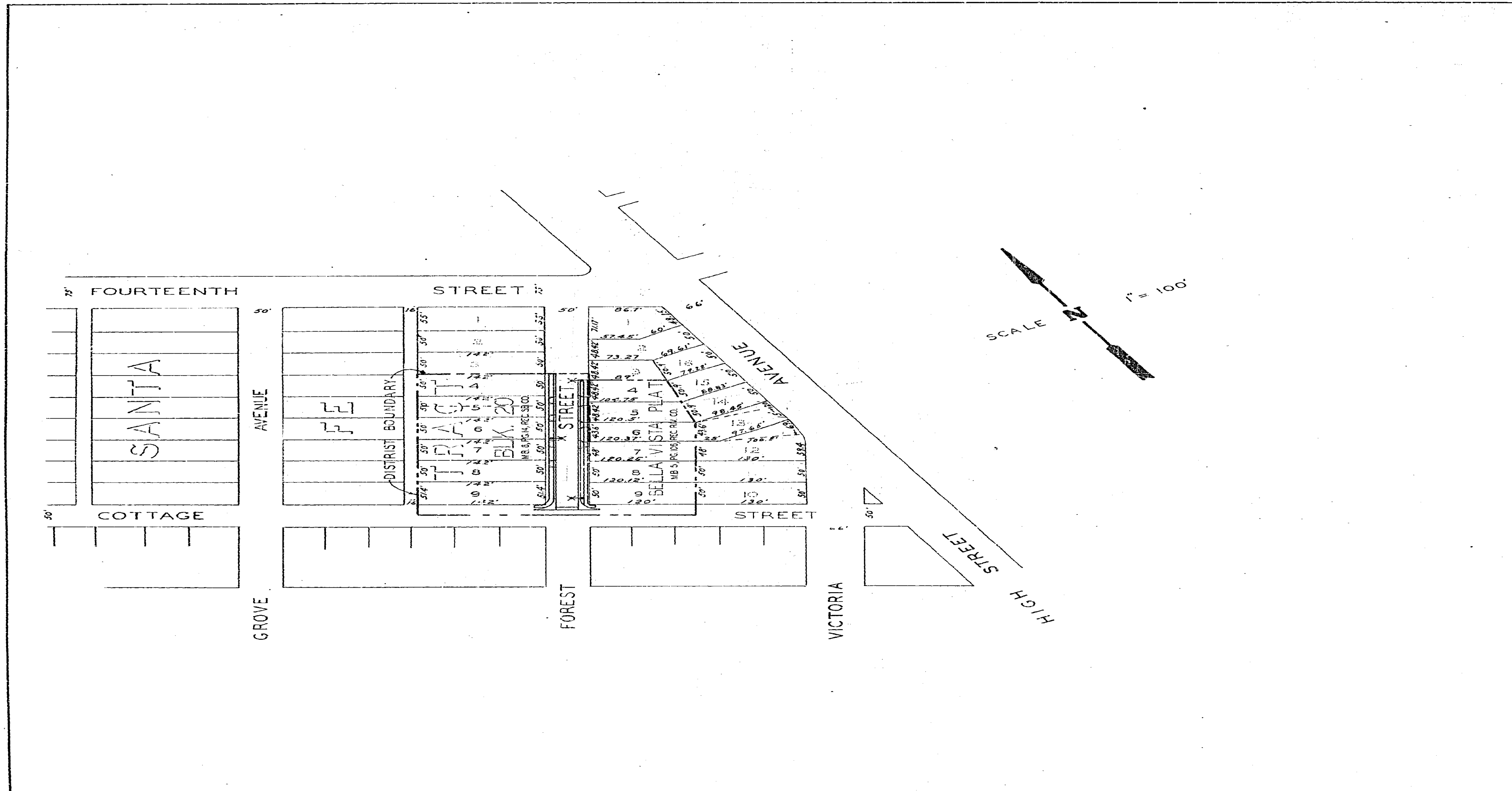


DIAGRAM OF THE PROPERTY AFFECTED OR BENEFITED BY THE WORK IN THE FOREST STREET IMPROVEMENT DISTRICT

REVISIONS			CITY OF RIVERSIDE, CALIFORNIA DEPARTMENT OF PUBLIC WORKS	
MARK	DATE	DESCRIPTION		
			FOREST STREET IMPROVEMENT DISTRICT	
DESIGNED BY	SUBMITTED BY	APPROVED BY	ACCT. NO. 18038	
DRAWN BY	PARK DEPT.	TRAFFIC DIV.	R-645-B	
CHECKED BY	RECOMMENDED BY	DATE	SHEET 2 OF 2	