

DIAGRAM








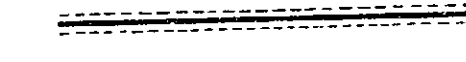

EXHIBITING ARLANZA IMPROVEMENT DISTRICT

IN THE COUNTY OF RIVERSIDE ON WHICH WORK HAS BEEN DONE UNDER THE OFFICIAL CONTRACT OF THE COUNTY SURVEYOR OF SAID COUNTY WITH GEORGE HERZ AND COMPANY DATED MARCH 20, 1957, FOR THE CONSTRUCTION OF CURB, GUTTERS, CURB RETURNS, AND DRAINAGE SYSTEM AS IS MORE PARTICULARLY DESCRIBED IN SAID CONTRACT TO WHICH REFERENCE IS MADE FOR FURTHER PARTICULARS; SAID DIAGRAM ALSO SHOWS THE RELATIVE LOCATION OF EACH LOT PORTION OF LOT PIECE OR PARCEL OF LAND ASSESSED FOR THE WORK DONE NUMBERED IN INK TO CORRESPOND TO THE INK NUMBERS IN THE ASSESSMENT AS SHOWN HEREIN. FIGURES NEXT TO PROPERTY LINES SHOW LENGTH OF SAID LINES IN FEET. THE MARK (') MEANS FEET. PROPERTY LINES THAT DIFFER FROM THE RECORDED SUBDIVISIONS ARE SHOWN BY BROKEN LINES. THE DISTRICT BENEFITED IS BOUNDED BY A HEAVY DASHED LINE.

PROPERTY COVERED BY THIS ASSESSMENT IS SHOWN ON THE FOLLOWING RECORDED MAPS:

- CAMP ANZA SUBDIVISION NO. 1
M.B. 22/81-82
- ANZA SIERRA TRACT, UNIT NO. 1
M.B. 23/69
- ANZA SIERRA TRACT, UNIT NO. 2
M.B. 25/63
- DOYLE TRACT
M.B. 27/56
- SIERRA FOOTHILL TRACT, NO. 1
M.B. 26/77
- R.S. 22/41

HEREIN THE LEGEND OF THE DIFFERENT KINDS OF WORK PERFORMED IS SHOWN AS FOLLOWS:

-  CONCRETE CURB AND GUTTER
-  CONCRETE CROSS GUTTERS
-  CURB INLETS AND CATCH BASINS
-  CURB OUTLET BOXES
-  CURB OPENINGS
-  CLEANOUTS
-  15" REINFORCED CONCRETE PIPE
-  21" REINFORCED CONCRETE PIPE
-  24" REINFORCED CONCRETE PIPE

COUNTY SURVEYOR OF THE COUNTY OF RIVERSIDE:
THE FOLLOWING KINDS OF WORK DONE BY GEORGE HERZ AND COMPANY UNDER CONTRACT DATED MARCH 20, 1957, PURSUANT TO RESOLUTION OF INTENTION NO. 101/2 ADOPTED BY THE BOARD OF SUPERVISORS OF THE COUNTY OF RIVERSIDE ON THE 17TH DAY OF SEPTEMBER 1956.

50,617	L.F.	CONCRETE CURB AND GUTTER
20,484	SO. FT.	CONCRETE CROSS GUTTERS
12	EACH	CURB INLETS AND CATCH BASINS
2	EACH	CURB OUTLET BOXES
4	EACH	CLEANOUTS
2	EACH	CURB OPENINGS
328	L.F.	15" REINFORCED CONCRETE PIPE
2,352	L.F.	21" REINFORCED CONCRETE PIPE
516	L.F.	24" REINFORCED CONCRETE PIPE
	LUMP SUM	RECONSTRUCT BOX CULVERT

I HEREBY CERTIFY THAT THE ABOVE WORK WAS DONE IN ACCORDANCE WITH LINES AND GRADES FURNISHED BY ME AND THAT THE DIAGRAM OF THE ASSESSMENT DISTRICT FOR THE SAME IS CORRECT.

AT SAID COUNTY OF RIVERSIDE THIS _____ DAY OF _____

COUNTY SURVEYOR
OF THE COUNTY OF RIVERSIDE

COUNTY SURVEYOR
OF THE COUNTY OF RIVERSIDE

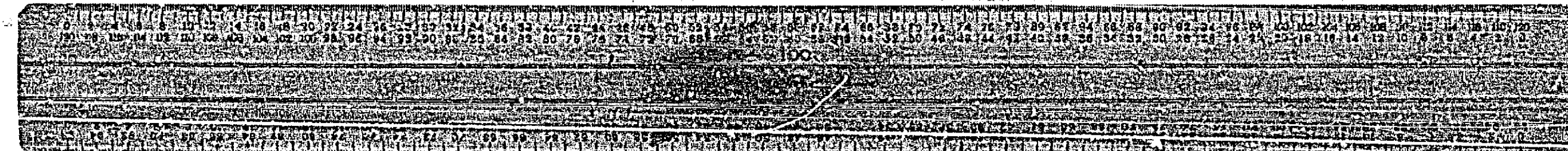
RECORDED AT _____ O'CLOCK _____
THIS _____ DAY OF _____

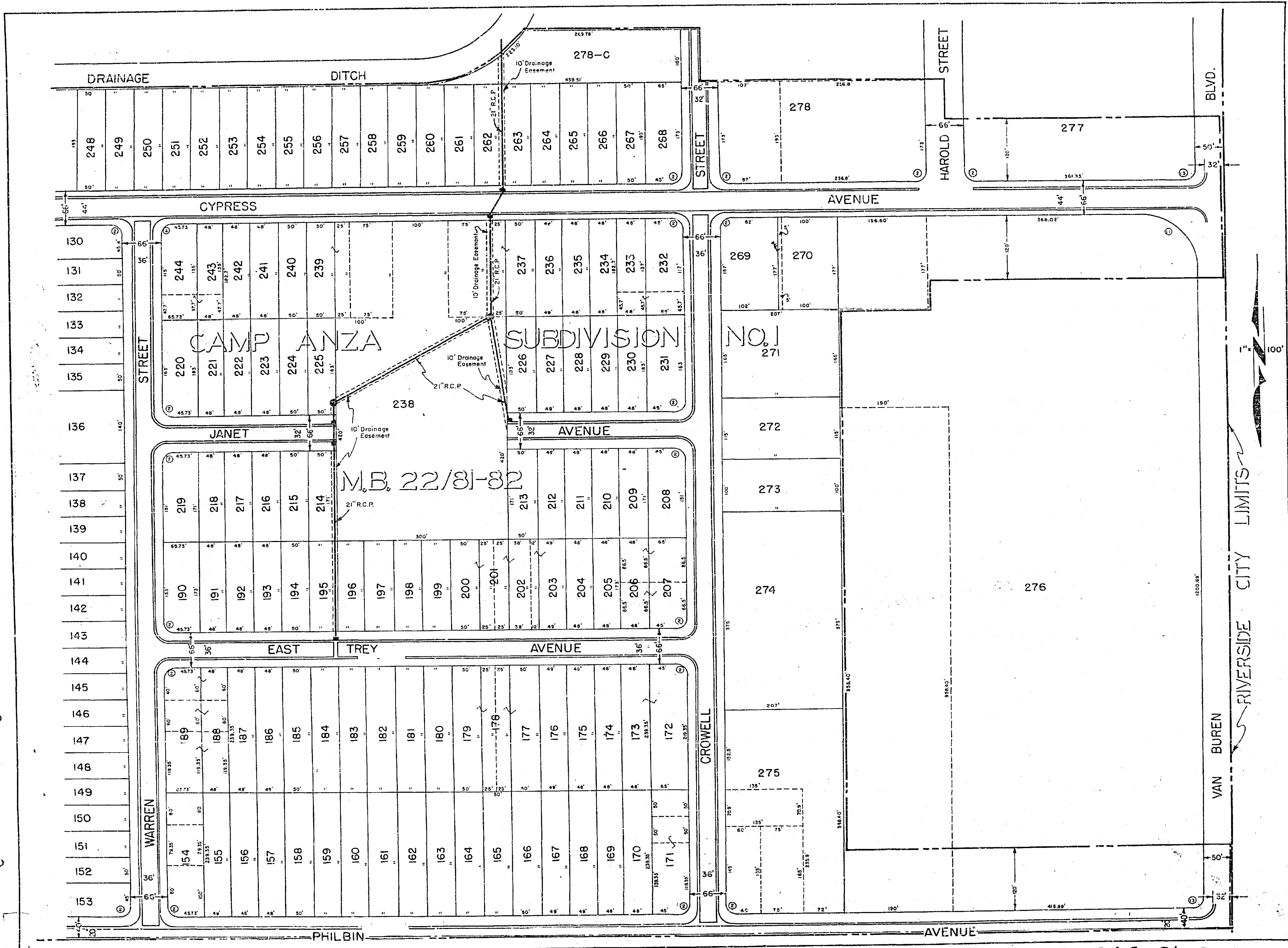
COUNTY SURVEYOR
OF THE COUNTY OF RIVERSIDE

R-646 Sh. 1 400-4

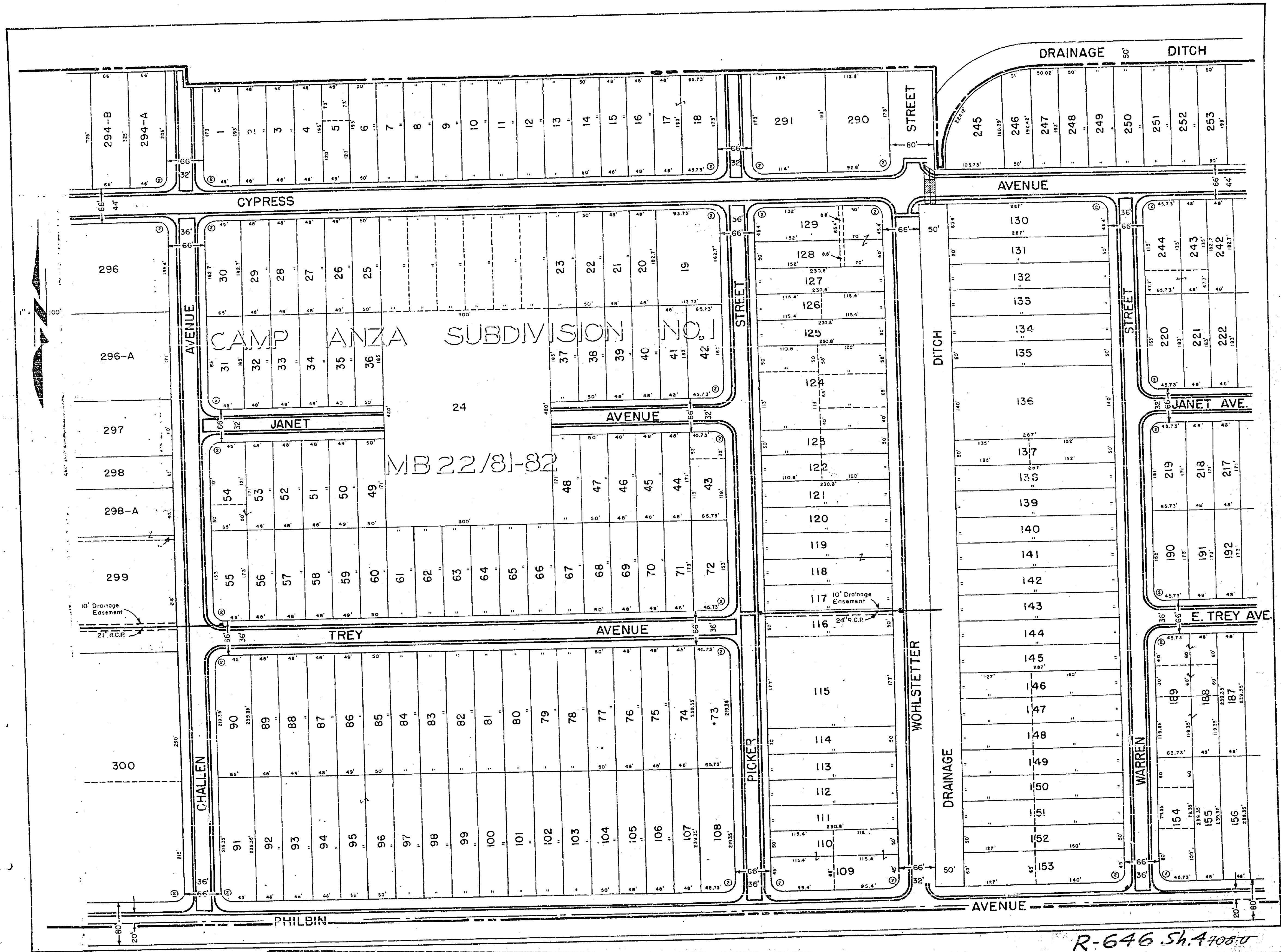


R-646 Sh. 2 198-4

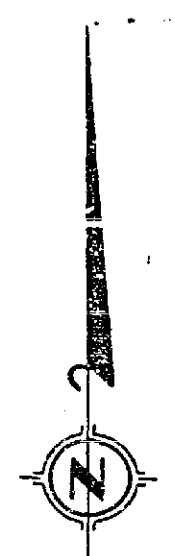
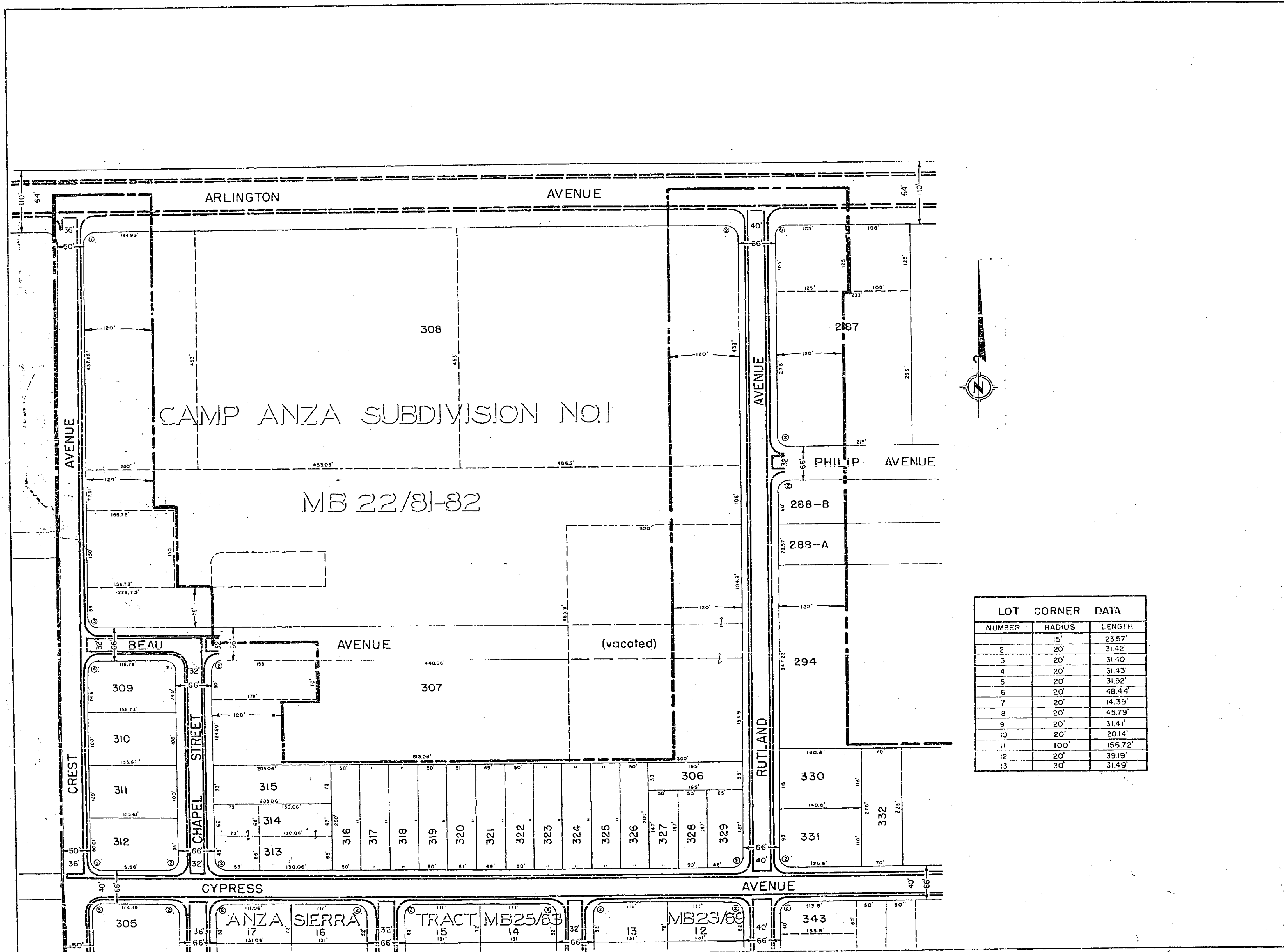




R-646 Sh. 3 700-U



R-646 Sh. 4-108-0



LOT CORNER DATA		
NUMBER	RADIUS	LENGTH
1	15'	23.57'
2	20'	31.42'
3	20'	31.40'
4	20'	31.43'
5	20'	31.92'
6	20'	48.44'
7	20'	14.39'
8	20'	45.79'
9	20'	31.41'
10	20'	20.14'
11	100'	156.72'
12	20'	39.19'
13	20'	31.49'

R-646 Sh. 5 408-4

