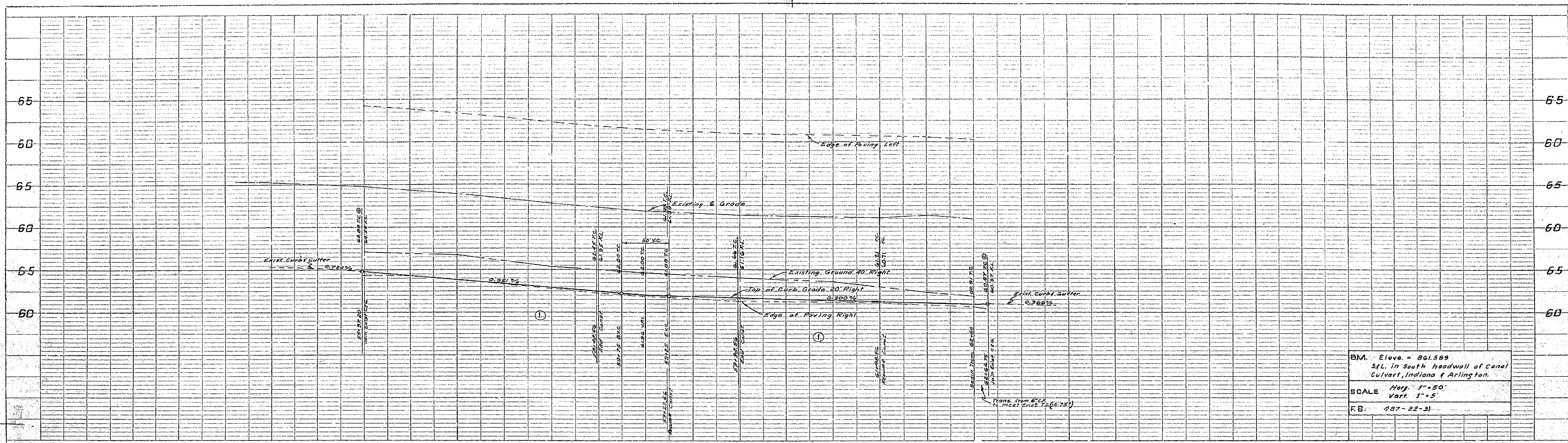


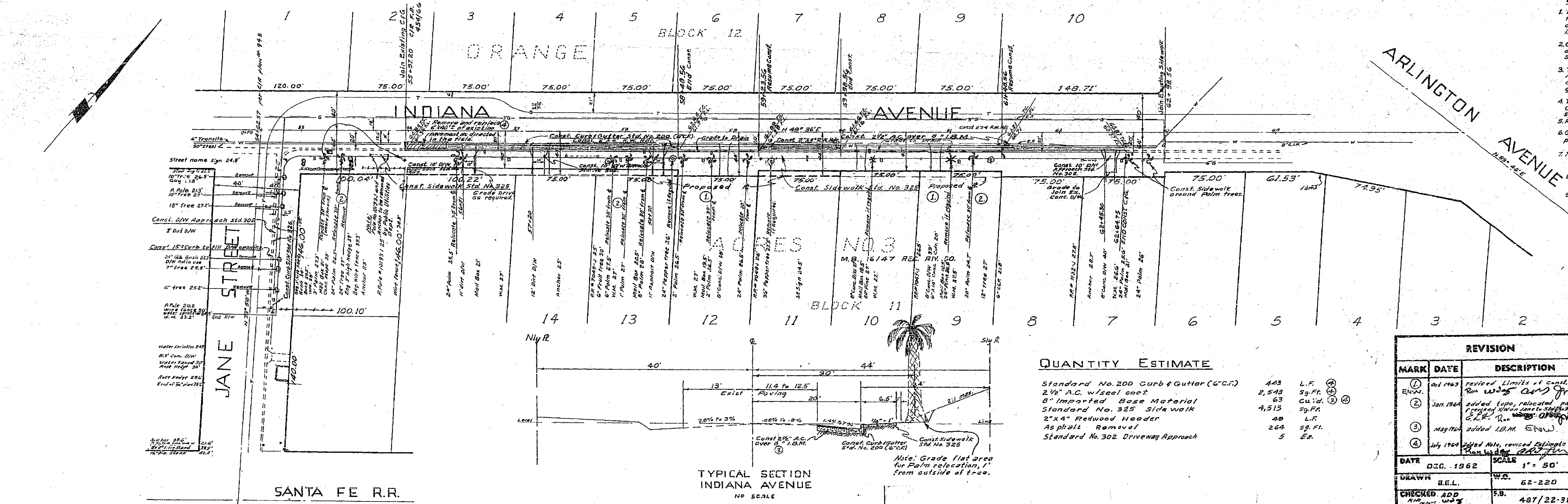
PROFILE  
 SHEET NO. 62-220-31  
 DATE 12/11/62

PLAN  
 SHEET NO. 62-220-31  
 DATE 12/11/62



B.M. Elev. = 861.589  
 S.L. in South headwall of Canal  
 Culvert, Indiana & Arlington.  
 SCALE Horiz. 1"=50'  
 Vert. 1"=5'  
 F.B. 407-22-31

- GENERAL NOTES**
- It shall be the responsibility of the Contractor to clear the right of way in accordance with the provisions, or law as it affects, each utility including irrigation lines and easements and at no cost to the City.
  - Construction shall be in accordance with the City of Riverside, Department of Public Works Specifications No. 461 and Standard Drawings.
  - The City of Riverside will take a soil test to determine the requirement on Imported Base Material after the Street has been prepared to rough grade.
  - Trim edge of existing paving to clean straight line. Construct matchup paving to produce a smooth section.
  - Relocate mail boxes as directed in the field.
  - Grade through areas not to be improved to provide drainage as directed by the Engineer.
  - Trees to be removed or relocated as shown.
  - The improvements shaded, only, to be constructed at this time.
  - prime coat and point binder are required.



APPROVED BY  
 [Signature]  
 MARK DECEMBER DIRECTOR  
 DATE 2-1-63

ALBERT A. WEBB ASSOCIATES  
 CIVIL ENGINEERS RIVERSIDE, CALIFORNIA  
 APPROVED [Signature] DATE 12/11/62

**QUANTITY ESTIMATE**

|   |       |         |   |
|---|-------|---------|---|
| Standard No. 200 Curb & Gutter (C.C.T.) | 443   | L.F.    | ① |
| 2 1/2" A.C. Wearing Coat                | 2,543 | Sq. Ft. | ② |
| 8" Imported Base Material               | 63    | Sq. Ft. | ③ |
| Standard No. 322 Sidewalk               | 4,515 | Sq. Ft. |   |
| 2"x4" Redwood Header                    | 40    | L.F.    |   |
| Asphalt Removal                         | 264   | Sq. Ft. |   |
| Standard No. 302 Driveway Approach      | 5     | Sq.     |   |

| MARK | DATE      | DESCRIPTION  |
|------|-----------|--|
| ①    | Aug 1963  | Revised Limits of Canal, but Rem. was 4' 0" from         |
| ②    | Jan 1964  | added 1000, relocated poles (existing sidewalk to right) |
| ③    | May 1964  | added 10.0' E.M.W.                                       |
| ④    | July 1964 | added data, revised limits of canal                      |

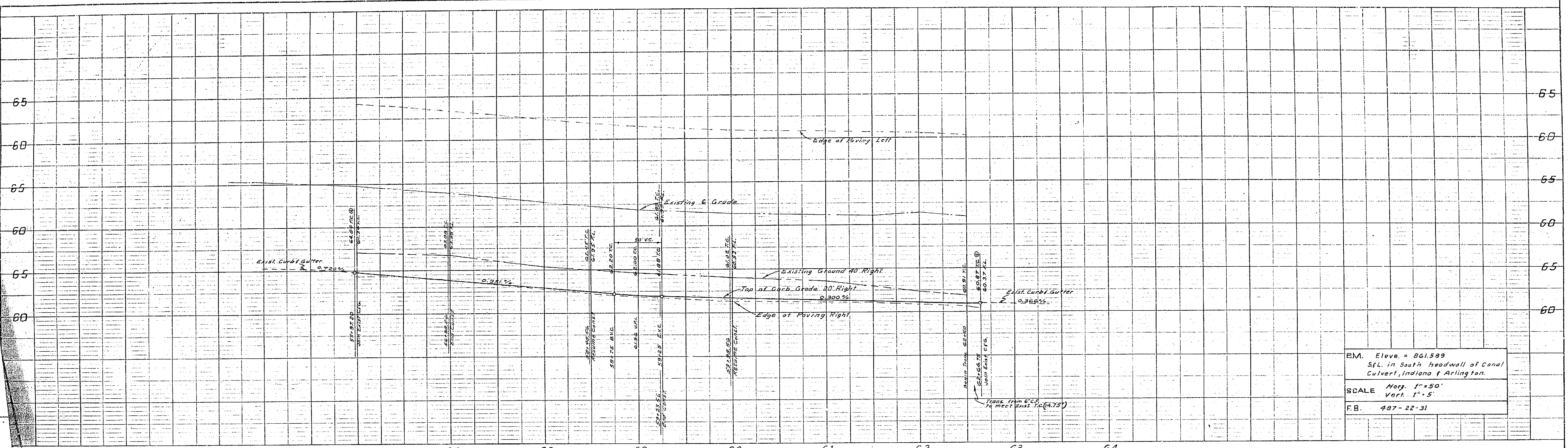
CITY OF RIVERSIDE, CALIFORNIA  
 DEPARTMENT OF PUBLIC WORKS  
 R-36-512  
 STREET PLAN & PROFILE  
 INDIANA AVENUE  
 JANE STREET  
 TO  
 ARLINGTON AVENUE

APPROVED BY  
 [Signature]  
 W.D. DIRECTOR OF PUBLIC WORKS  
 DATE 2-6-63

NO. R-669  
 SHEET 1 OF 1

Indecred only  
 DWG. NO. 62-220-A

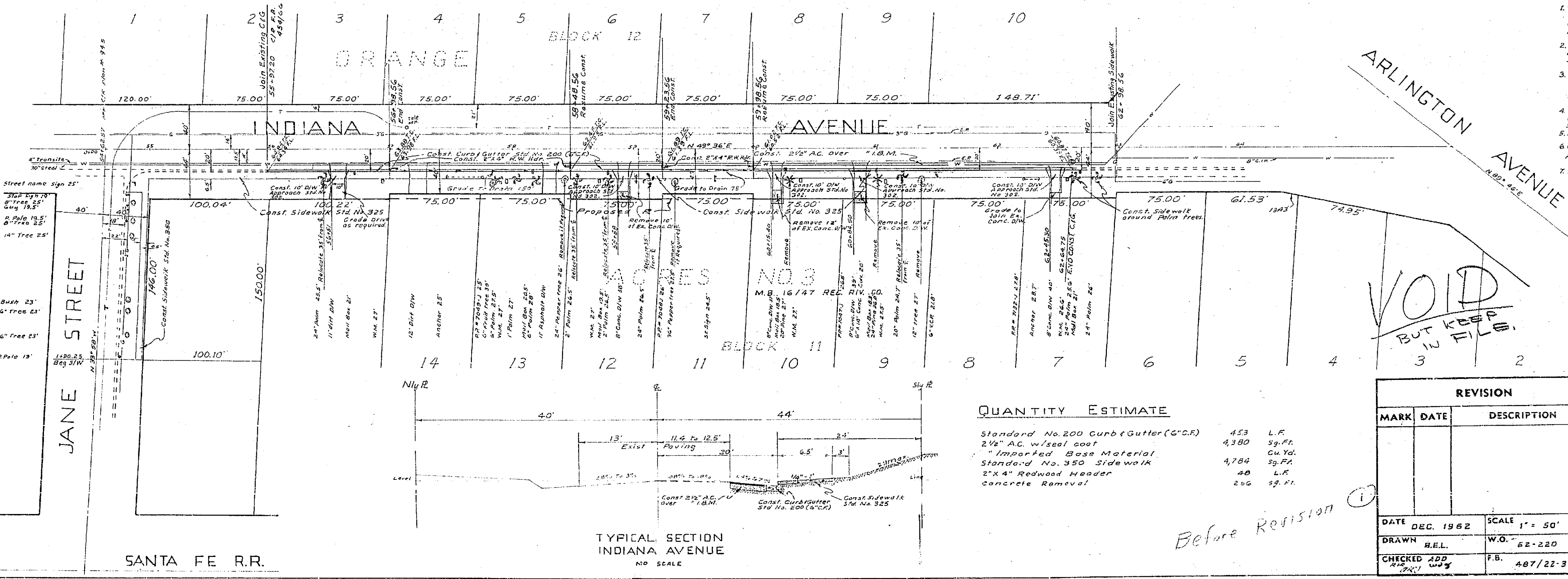




BM. Elev. = 661.599  
 5 ft. in South Headwall of Canal  
 Culvert, Indiana f. Arlington.  
 SCALE Vert. 1" = 5'  
 F.B. 487-22-31

**GENERAL NOTES**

- It shall be the responsibility of the Contractor to clear the right of way in accordance with the provisions of law as it affects each utility including irrigation lines and appurtenances and at no cost to City.
  - Construction shall be in accordance with the City of Riverside Department of Public Works Specifications No. 801 and Standard Drawings.
  - The City of Riverside will take a soil test to determine the requirement on imported Base Material after the Street has been prepared to rough grade.
  - Trim edge of existing paving to clean straight line. Construct matchup paving to produce a smooth section.
  - Relocate mail boxes as directed in the field.
  - Grade through areas not to be improved to provide drainage as directed by the Engineer.
  - Trees to be removed or relocated as shown.
- B. The improvements shaded, only, to be constructed at this time.  
 C. Prime coat and paint binder are required.



**QUANTITY ESTIMATE**

|   |        |         |
|---|--------|---------|
| Standard No. 200 Curb & Gutter (C.C.R.) | 453    | L.F.    |
| 2 1/2" A.C. w/seal coat                 | 4,380  | Sq. Ft. |
| Imported Base Material                  | 64,784 | Cu. Yd. |
| Standard No. 350 Sidewalk               | 40     | L.F.    |
| 2" x 4" Redwood Header                  | 240    | Sq. Ft. |
| Concrete Removal                        |        |         |

| REVISION |      | DESCRIPTION |
|----------|------|-------------|
| MARK     | DATE |             |
|          |      |             |
|          |      |             |

|         |           |       |           |                          |                    |     |       |
|---------|-----------|-------|-----------|--------------------------|--------------------|-----|-------|
| DATE    | DEC. 1962 | SCALE | 1" = 50'  | APPROVED BY              | <i>[Signature]</i> | NO. | R-669 |
| DRAWN   | H.E.L.    | W.O.  | 62-220    | DIRECTOR OF PUBLIC WORKS |                    |     |       |
| CHECKED | ADD       | F.B.  | 487/22-31 | DATE                     | 2-6-63             |     |       |

TYPICAL SECTION INDIANA AVENUE  
 NO SCALE