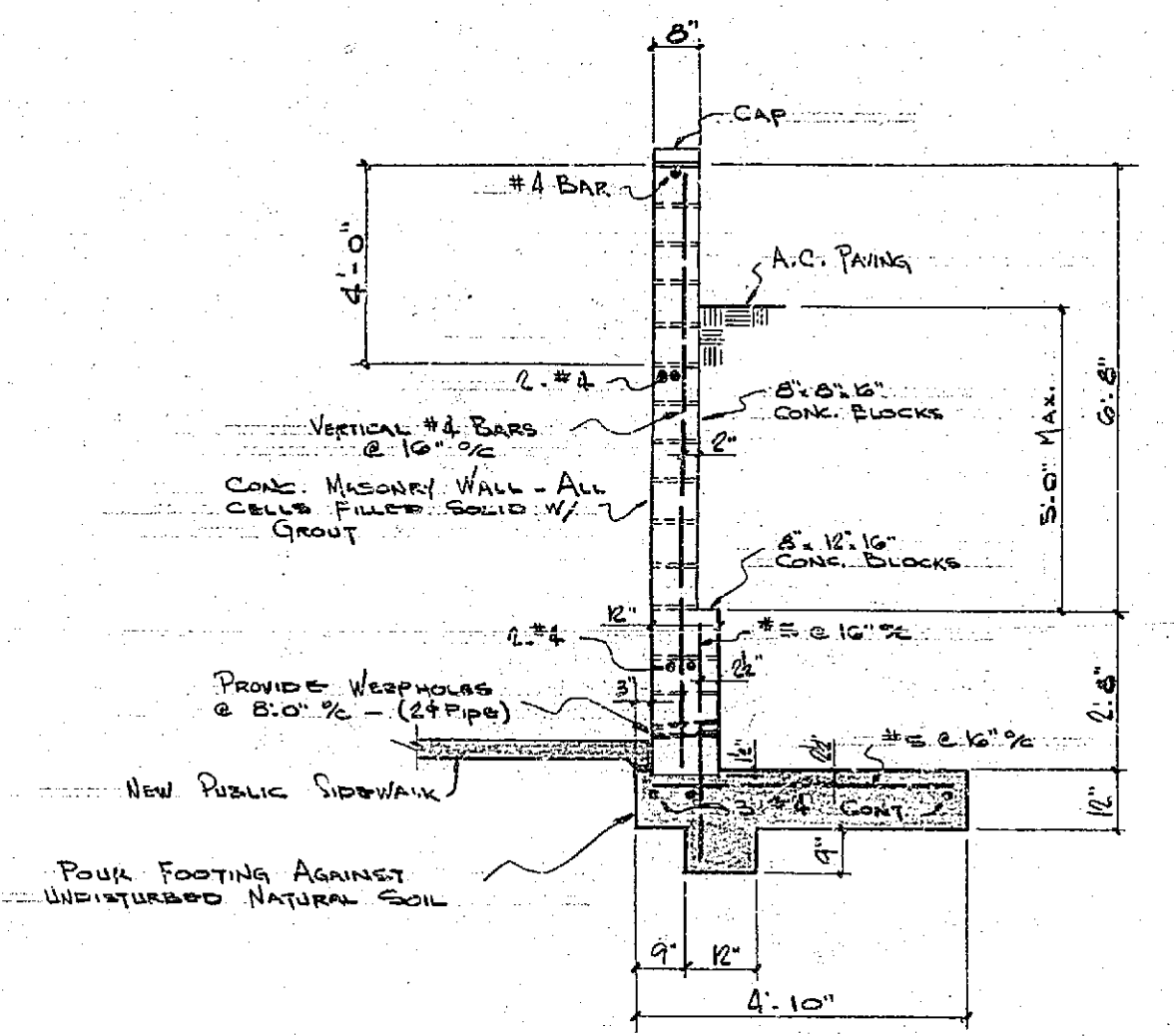
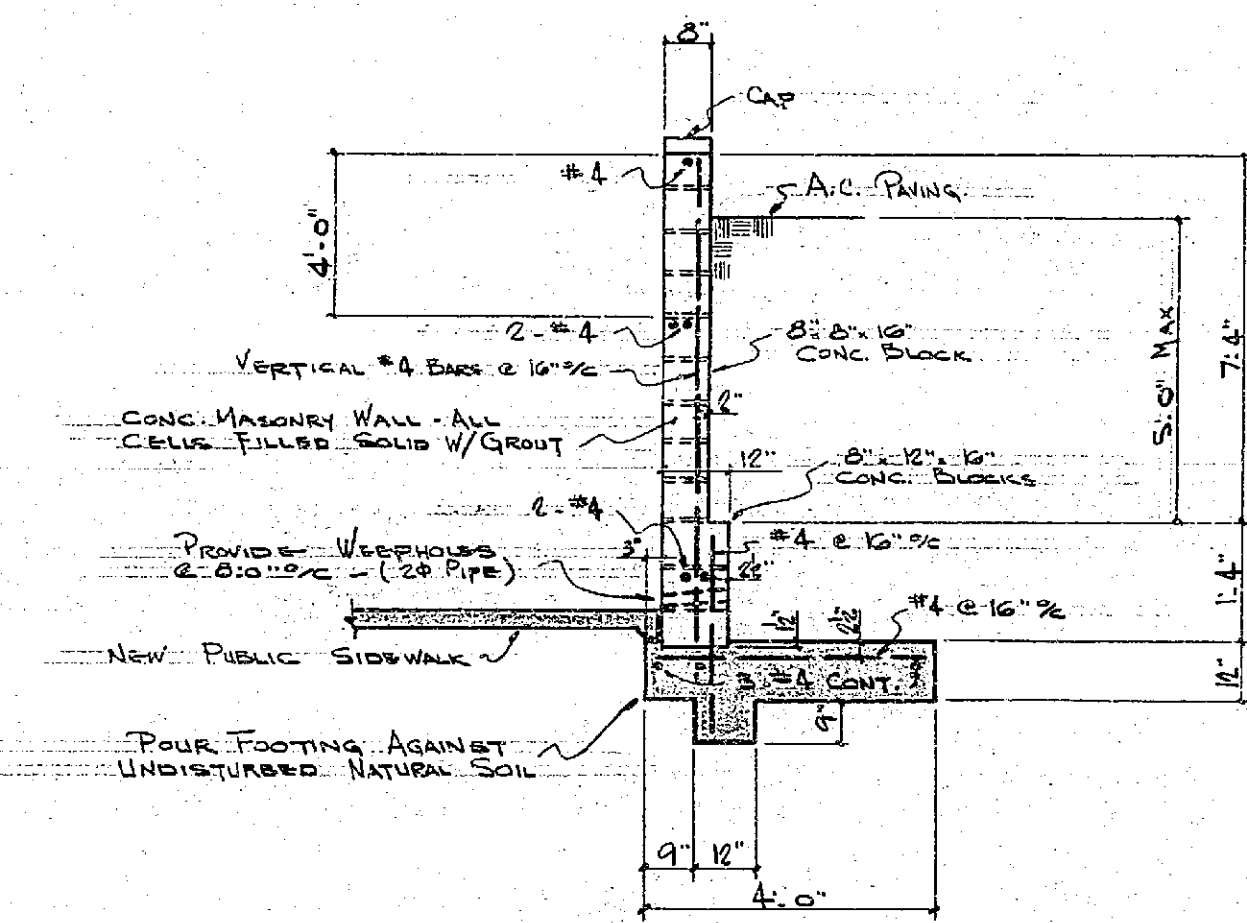


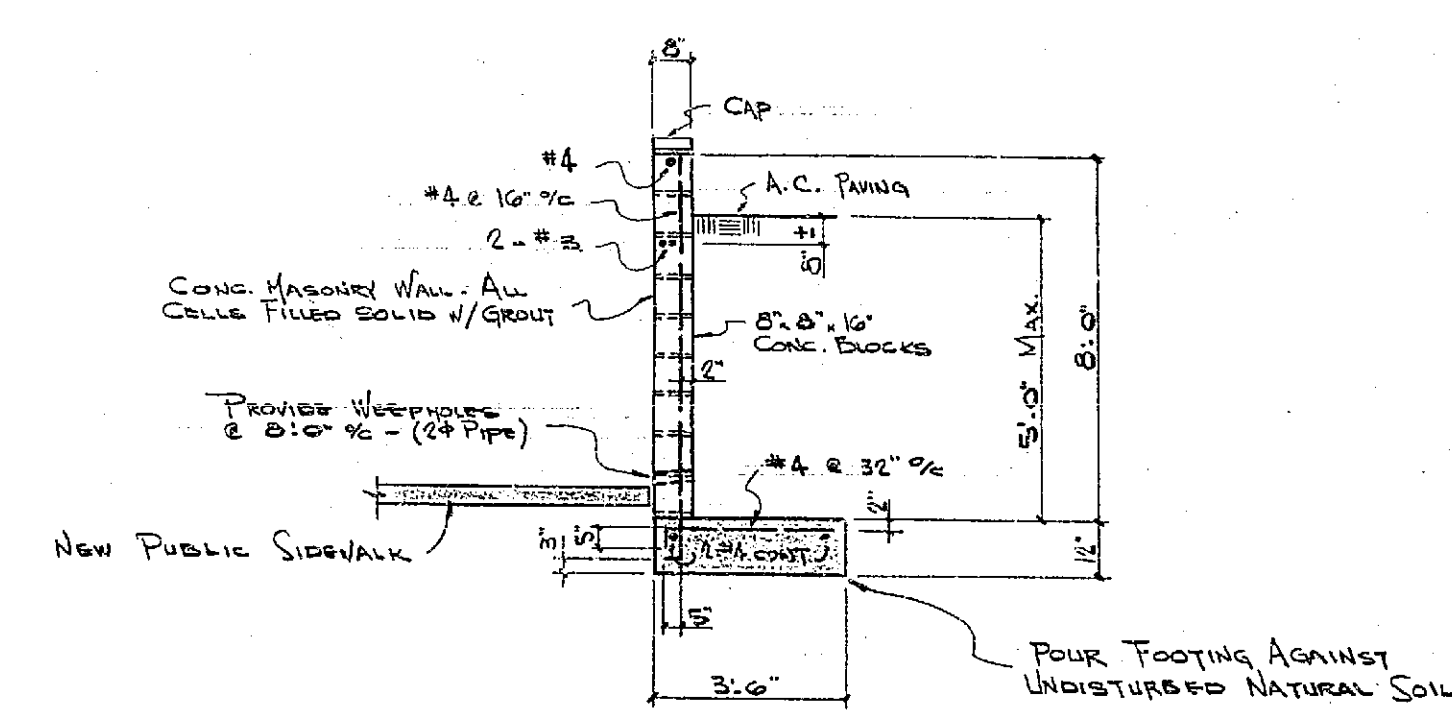
STADIUM AVE. WALL ELEVATION
SCALE: 1/8" = 1'-0"



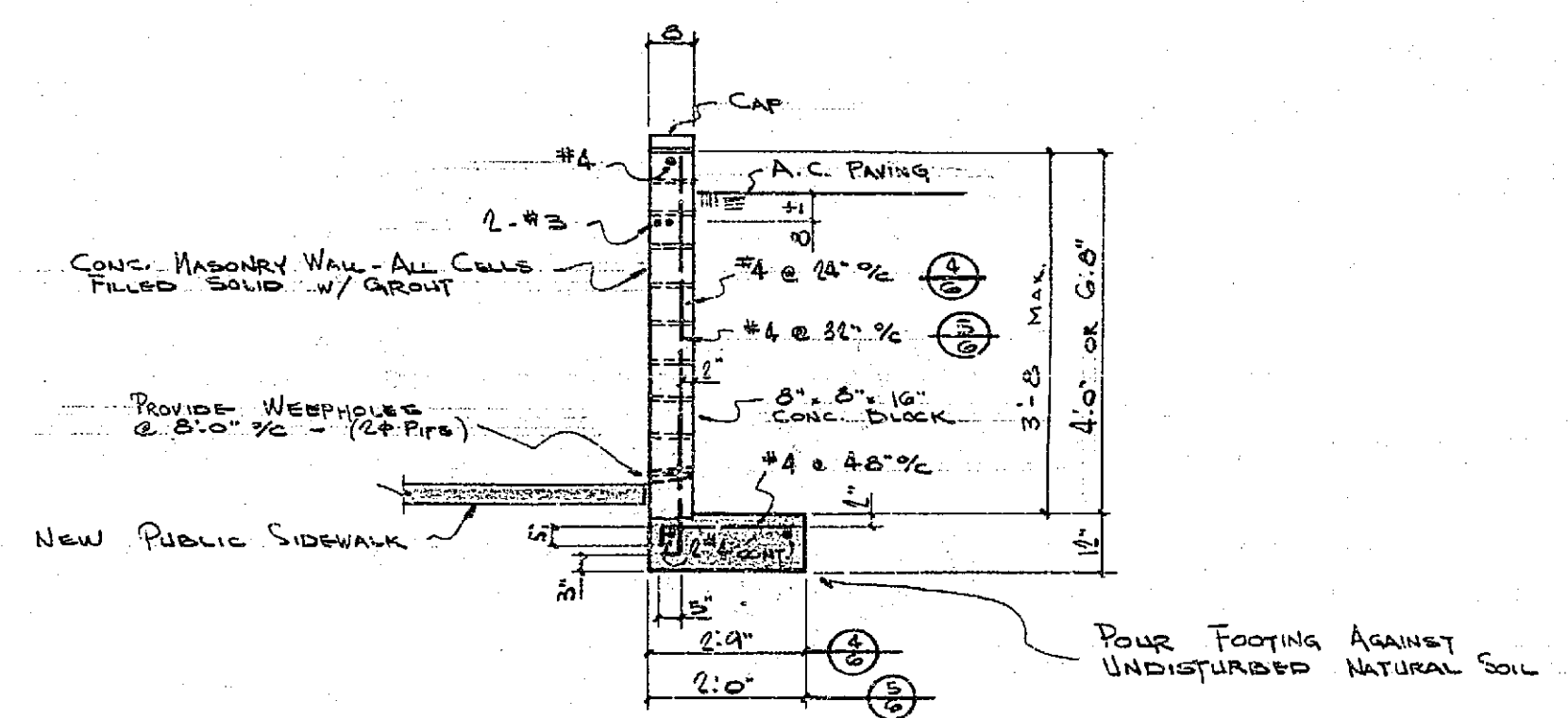
S.E.C.T. 1



S.E.C.T. 2



S.E.C.T. 3



S.E.C.T. 4 & 5

CITY OF RIVERSIDE, CALIFORNIA
DEPARTMENT OF PUBLIC WORKS

WALL PLAN & PROFILE
ON STADIUM AVENUE
5th OF 14th ST.
R-18-623
SCALE: As shown

APPROVED BY <i>[Signature]</i> Director of Public Works	NO. R-670
DATE 3-27-63	SHEET 2 OF 2

REVISIONS		
MARK	DATE	DESCRIPTION
DESIGNED BY	CHECKED BY <i>[Signature]</i>	
DRAWN BY	RECOMMENDED BY <i>[Signature]</i> ASSISTANT CITY ENGINEER	

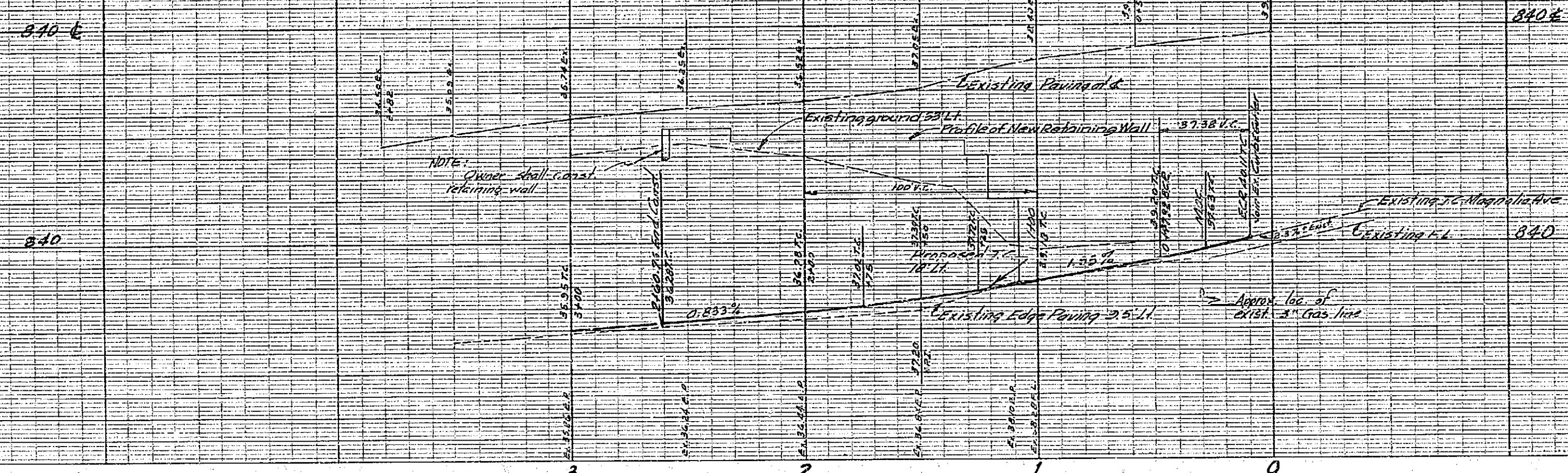
EDWARD A. FESEB
CE 12.178

PERLIN - BOGGIO
ENGINEERING CORPORATION
716 EAST FOURTEENTH STREET, LOS ANGELES 21, CALIFORNIA

PROPOSED CAR WASH FOR
DICK HARRISON

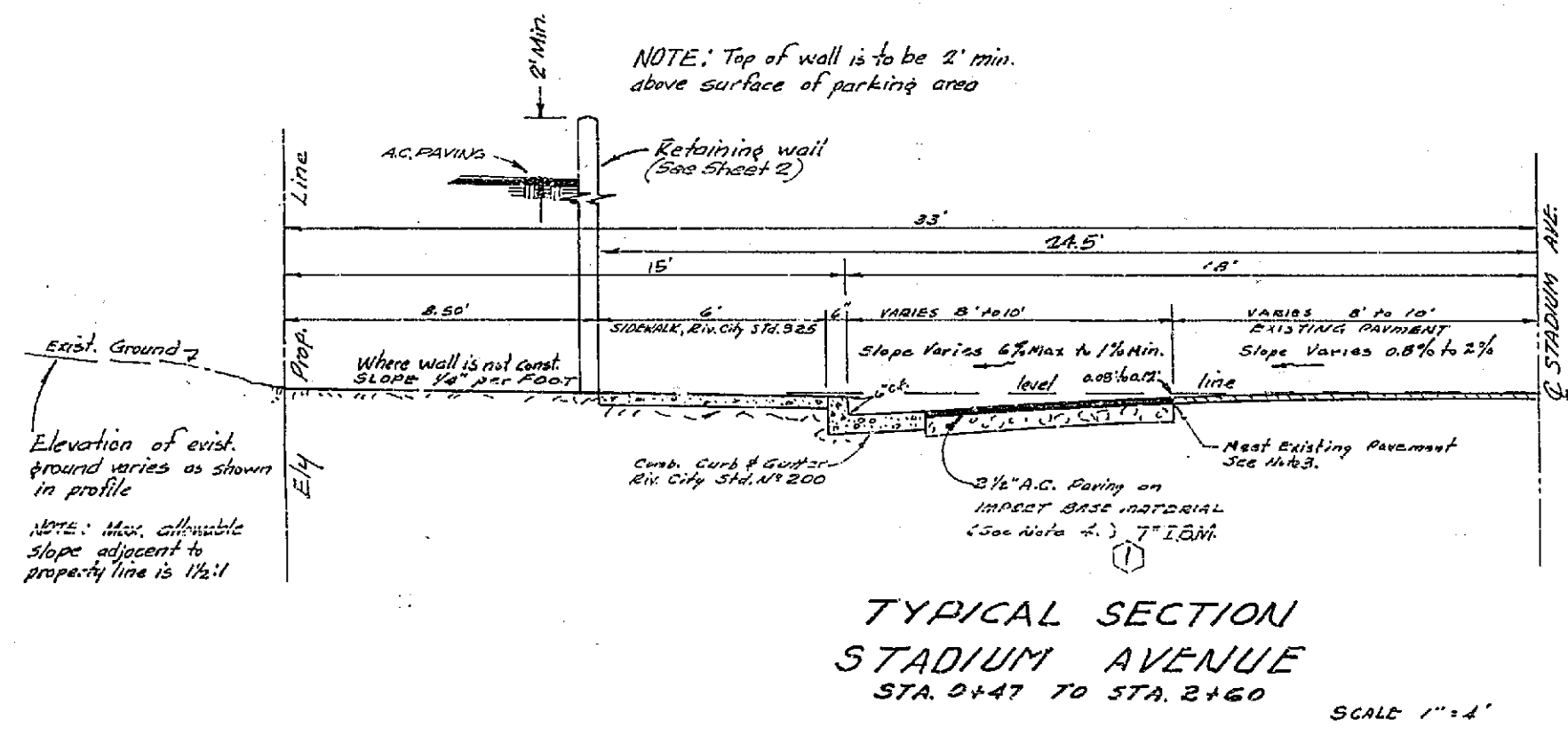
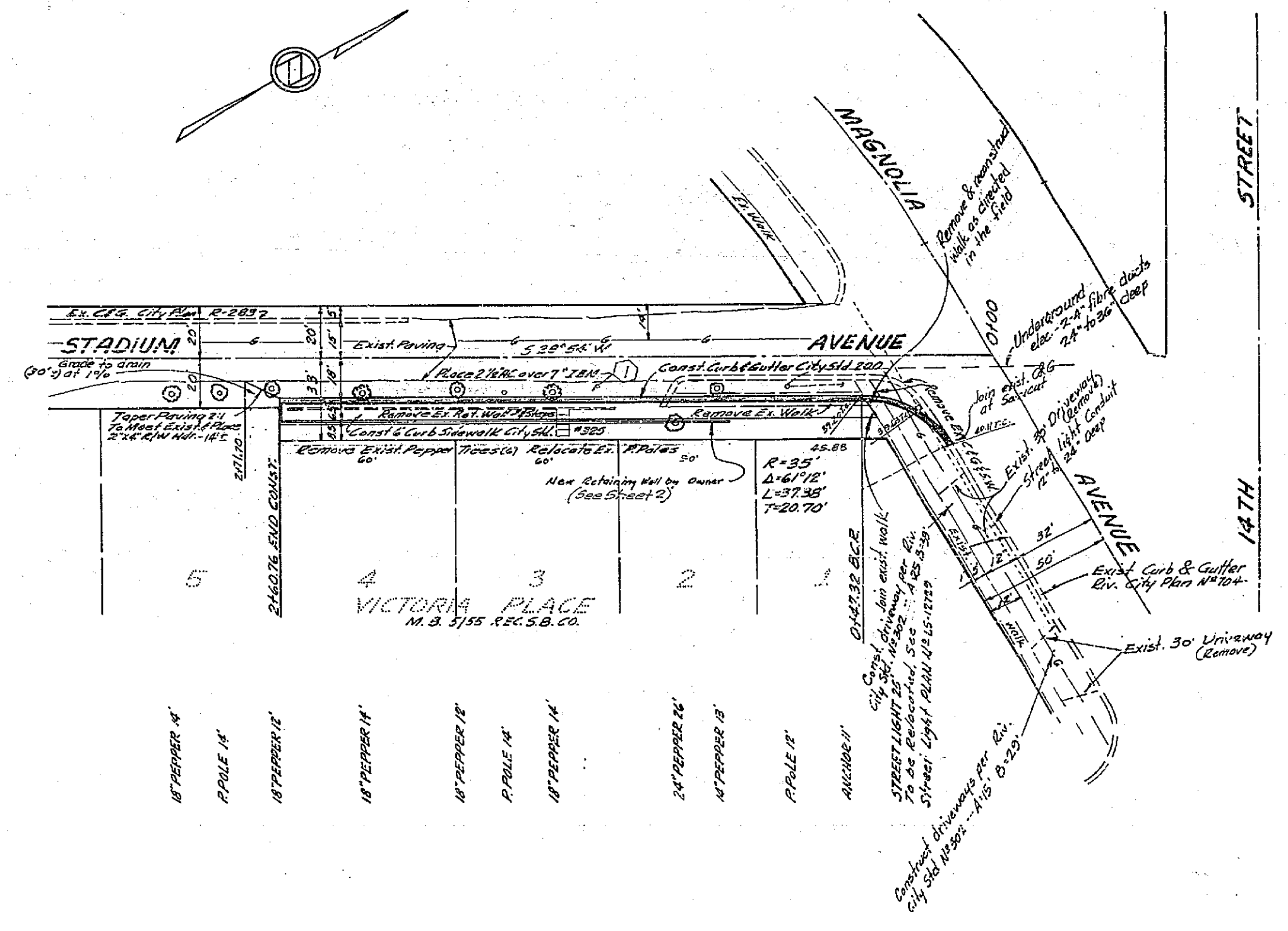
SCALE: NONE	APPROVED BY	DRAWN BY
DATE:	REVISION	
MAIN & MAGNOLIA		
RIVERSIDE CALIFORNIA		
RETAINING WALLS		DRAWING NUMBER PB125 1/2

R-670 SHEET 2 OF 2



BENCH MARK: ELEV. 842.75
 N.E. COR. IN C.B. N.E. COR. MAIN & 14TH
 42° N'LY OF N.P.

- GENERAL NOTES**
1. All Construction shall be in accordance with Standards and Specifications No. 461 of the City of Riverside Department of Public Works.
 2. It shall be the responsibility of the Contractor to clear the Right of Way in accordance with the provisions of law as it affects each utility including irrigation lines and appurtenances, and/or no extra cost to the City of Riverside.
 3. True edge of Existing Paving to smooth straight line and overlay as required to produce smooth Crown section, and as directed in the field by the City Engineer. Remove curbs and replace as necessary to meet max. cross section slope conditions.
 4. Impact Base Material requirements will be determined by the City of Riverside after the rough grading has been completed.
 5. Prime Coat & paint binder required.
 6. REMOVE ALL TREES THAT WILL INTERFERE WITH CONSTRUCTION.



**TYPICAL SECTION
 STADIUM AVENUE**
 STA. 0+47 TO STA. 2+60
 SCALE 1"=4'

REVISIONS		
MARK	DATE	DESCRIPTION
①	4-11-63	Add Base requirement

J. F. DAVIDSON-CIVIL ENGINEER
 R.E. NO. 892
 RIVERSIDE, CALIFORNIA
 APPROVED BY: *J. Davidson* DATE: 4-31-63

CITY OF RIVERSIDE, CALIFORNIA
 DEPARTMENT OF PUBLIC WORKS

STREET PLAN & PROFILE
STADIUM AVENUE
 5'11" OF 14TH ST.
 R-18-623

HORIZ. SCALE 1"=40' VERT. SCALE 1"=4'

DESIGNED BY: _____ CHECKED BY: *W.M. ADD*
 DRAWN BY: _____
 RECOMMENDED BY: *J.F. Davidson*
 ASSISTANT CITY ENGINEER

APPROVED BY: *J.F. Davidson*
 Director of Public Works

DATE: 3-27-63 SHEET 1 OF 2