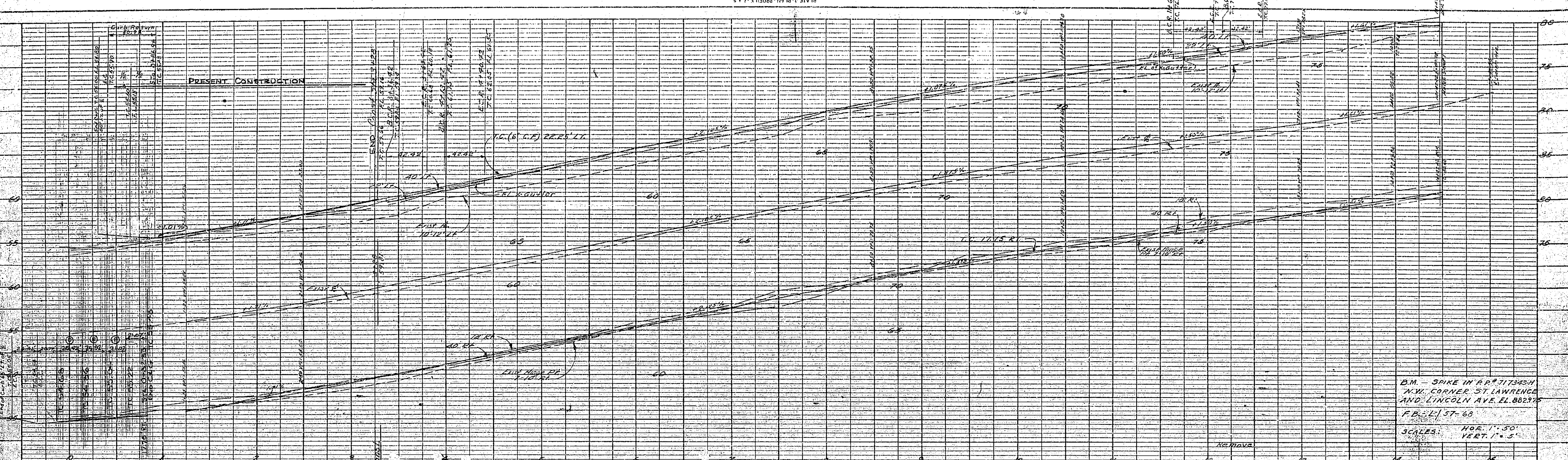


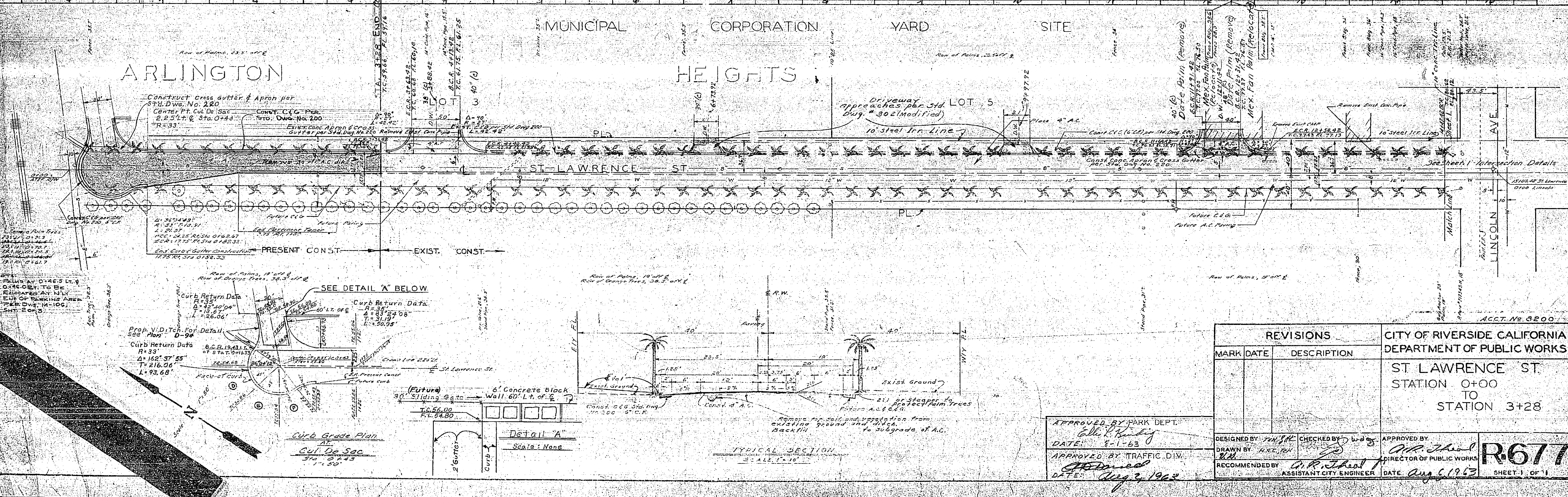
DATE: MAY 1963
 DRAWN BY: [illegible]
 NO. 10001

PROFILE
 NO. 10001
 DATE: MAY 1963

PLAN
 NO. 10001
 DATE: MAY 1963



B.M. SPIKE IN E.P. 7174504
 NW CORNER ST. LAWRENCE
 AND LINCOLN AVE. EL. 882.77
 F.B. 2157-68
 SCALES: HOR. 1" = 50'
 VERT. 1" = 5'



REVISIONS		DESCRIPTION
MARK	DATE	

CITY OF RIVERSIDE, CALIFORNIA
 DEPARTMENT OF PUBLIC WORKS
 ST. LAWRENCE ST.
 STATION 0+00
 TO
 STATION 3+28

DESIGNED BY: [illegible] CHECKED BY: [illegible]
 DRAWN BY: [illegible]
 RECOMMENDED BY: [illegible] ASSISTANT CITY ENGINEER
 APPROVED BY: [illegible] PARK DEPT. DATE: 8-1-63
 APPROVED BY: [illegible] TRAFFIC DIV. DATE: Aug 2, 1963
 APPROVED BY: [illegible] DIRECTOR OF PUBLIC WORKS DATE: Aug 6, 1963

R677
 SHEET 1 OF 1