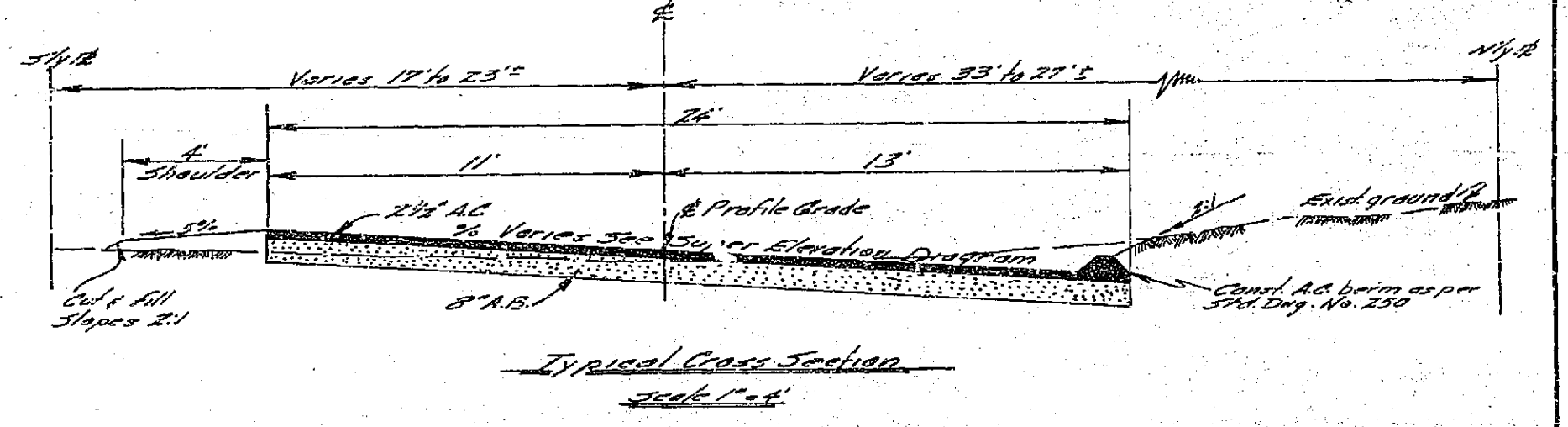
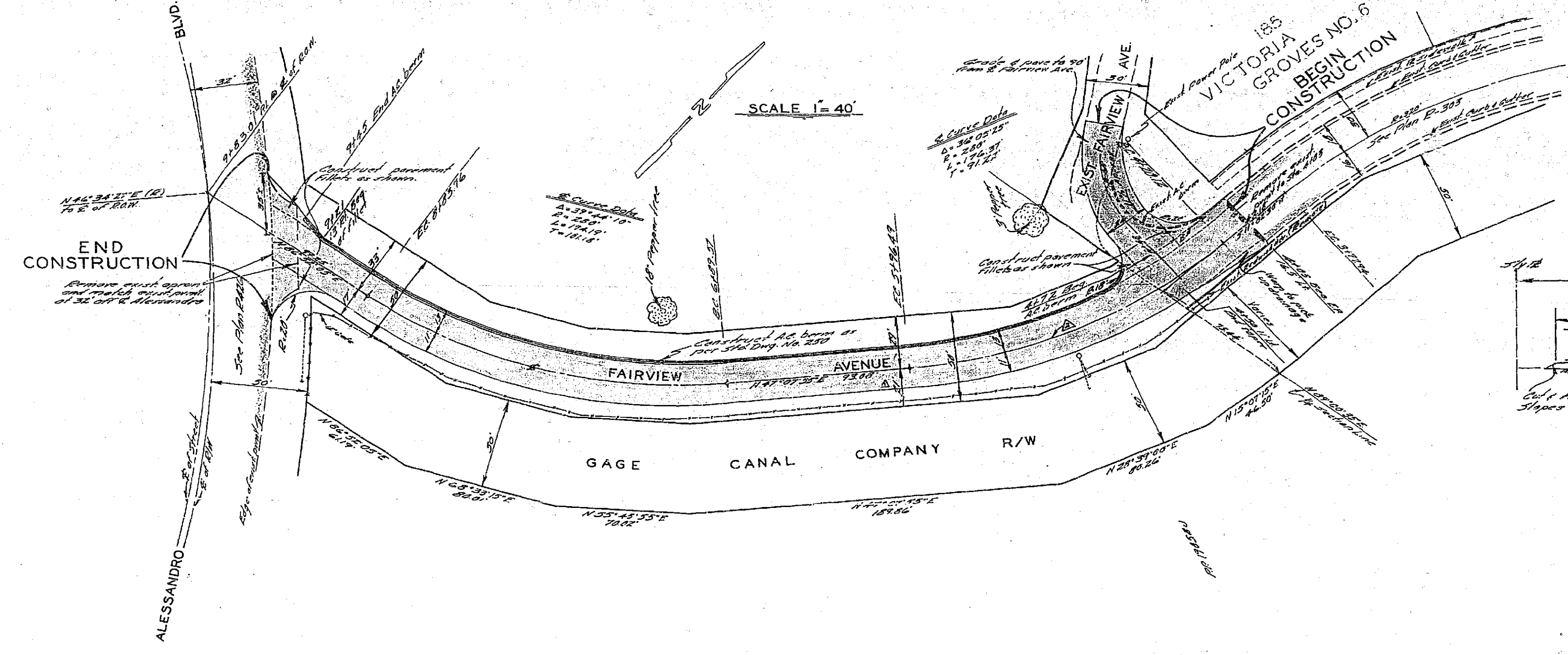


B.M. ELEV. 1014.50-S&L IN N.E. COR.
ISLAND CEN. RAL & FAIRVIEW SLY
FB. K/21-22
SCALE HOR. 1"=40'
VERT. 1"=4'



REVISIONS			CITY OF RIVERSIDE, CALIFORNIA DEPARTMENT OF PUBLIC WORKS	
MARK	DATE	DESCRIPTION		
Δ	5-15-63	Change of Curve 17' to 21' Approved <i>[Signature]</i> 5-15-63	FAIRVIEW AVENUE AT ALESSANDRO BLVD. NLY SIDE GAGE CANAL	
Δ	5-16-63	Approved changes to 24" AC concrete bottom and top Approved <i>[Signature]</i> 5-16-63		
DESIGNED BY	APPROVED BY	SUBMITTED BY	APPROVED BY	PROJ. NO. 9006
DRAWN BY		PARK DEPT.	TRAFFIC DIV.	R-682
CHECKED BY		RECOMMENDED BY	DATE	SHEET 1 OF 1

