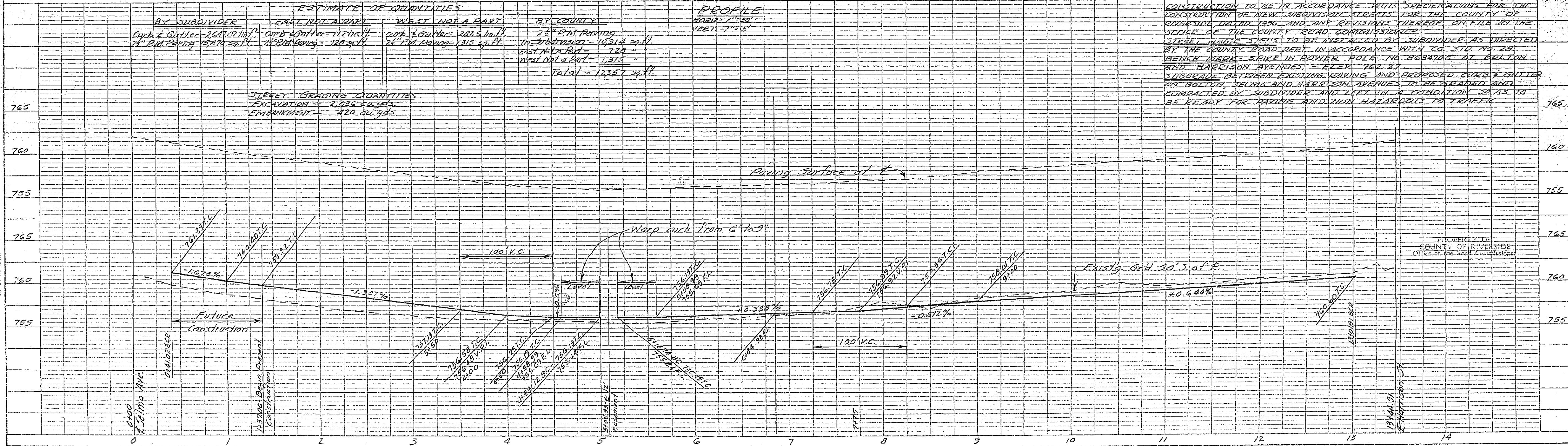


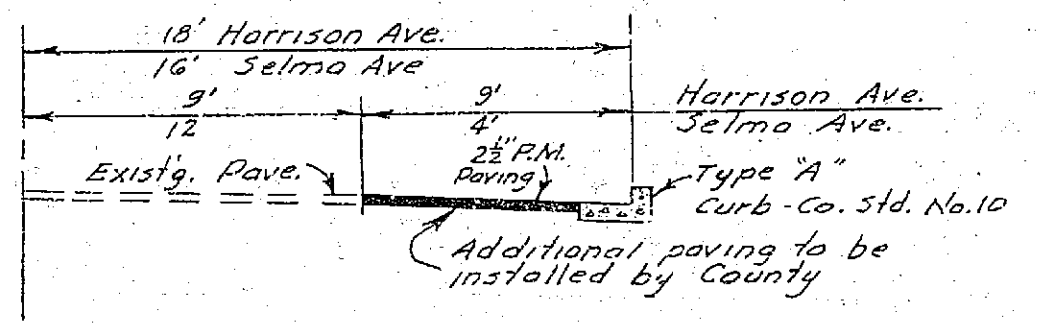
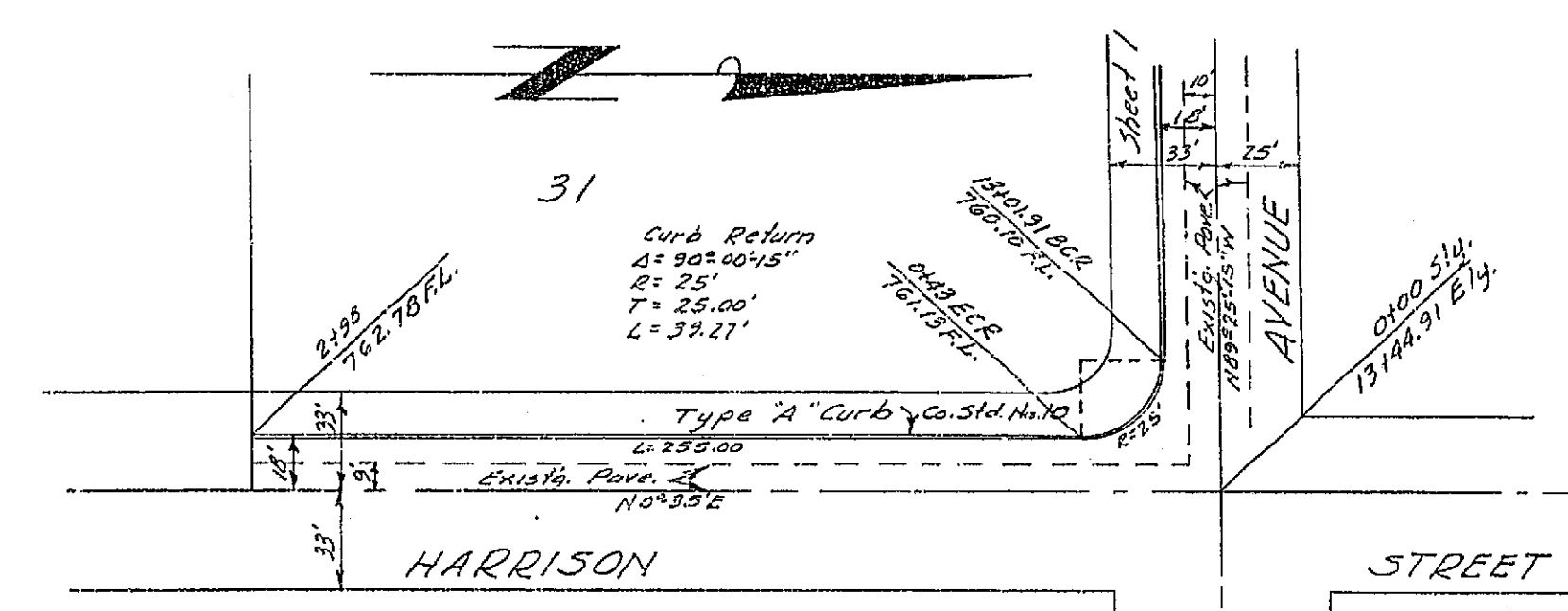
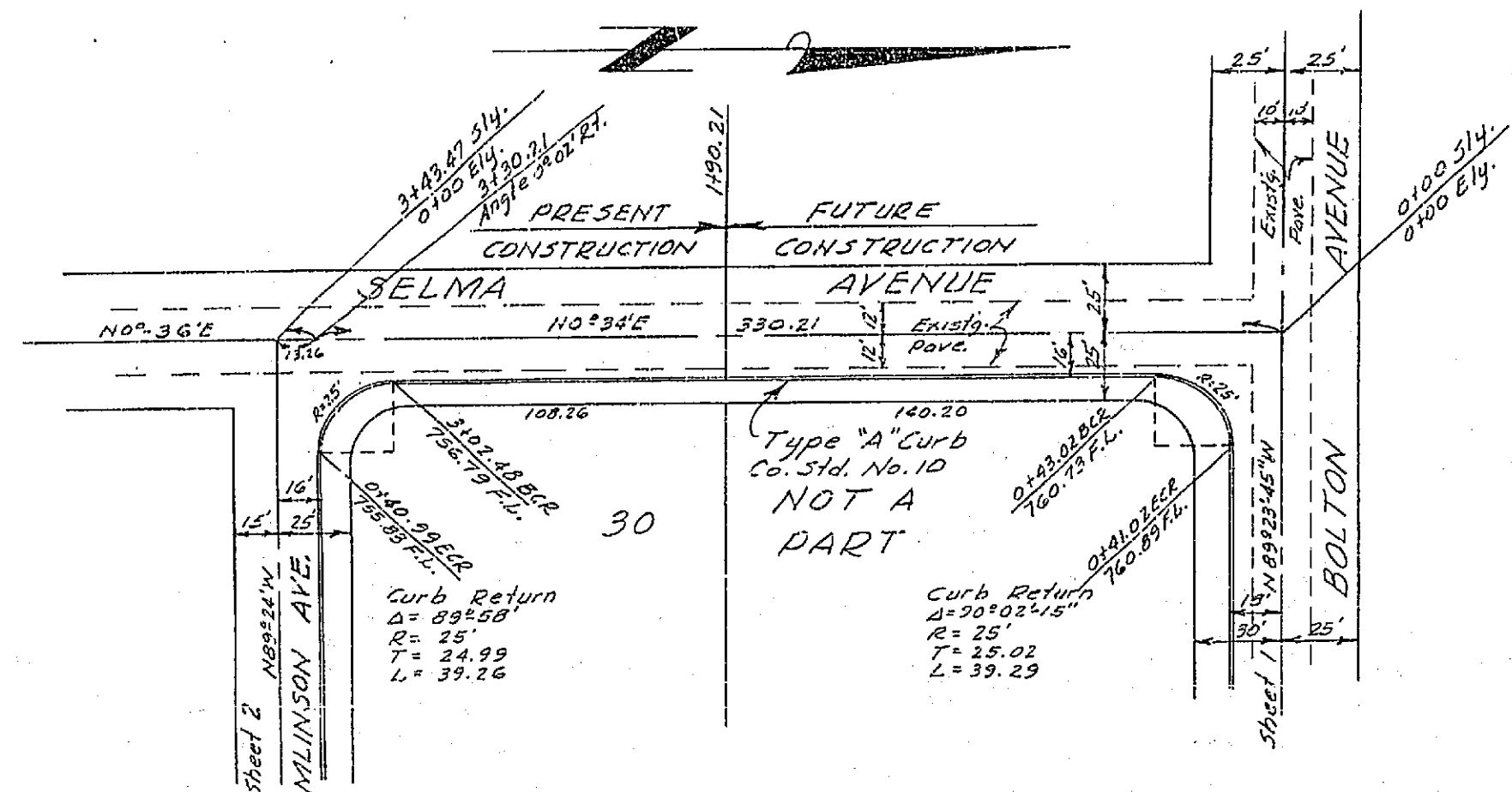
Grades Revised	11-30-57	REC
REVISIONS	DATE	BY
ARLINGTON FOOTHILLS		
STREET PLAN & PROFILE OF BOLTON AVENUE		
SCALE 1/4" = 30'	ALBERT A. WEBB ASSOCIATES CIVIL ENGINEERS	W.O. 57-253 SHEET 1
DATE Oct. 27		
DRAWN REC.		
TRACED		
CHECKED	RIVERSIDE CALIFORNIA	OF 4 SHEETS DWG. NO. 57-253B
E. B.		



DATE	BY
PLAN	REVISIONS
NOTE BOOK	CHECKED
NO. 248	BY

DATE	BY
PROFILE	REVISIONS
NOTE BOOK	CHECKED
NO. 248	BY

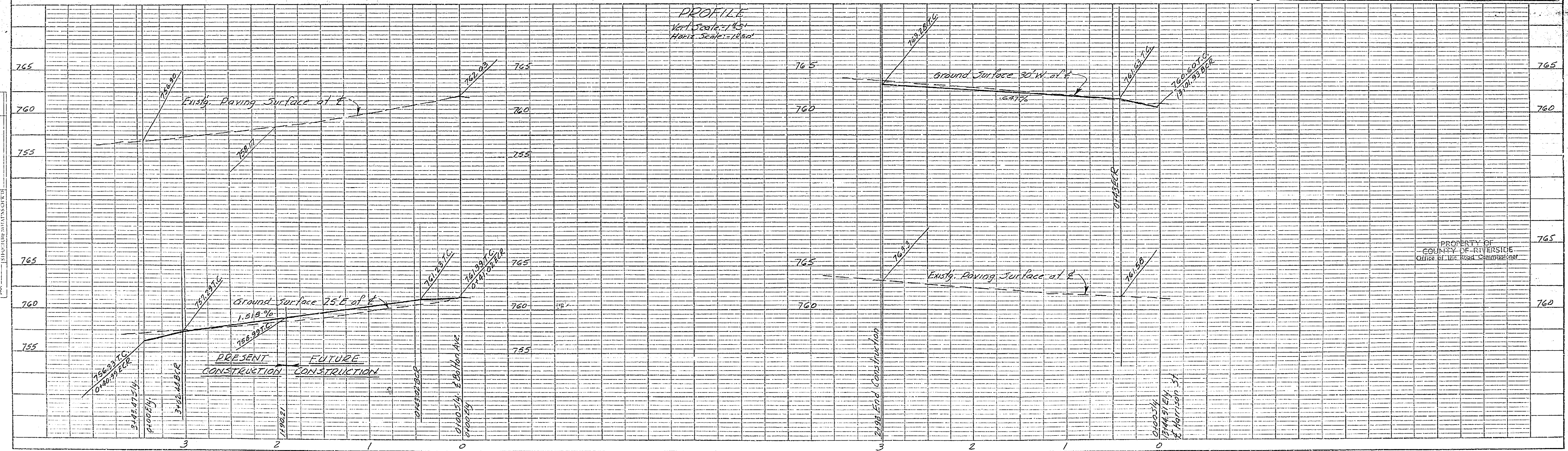
729-H
R-688



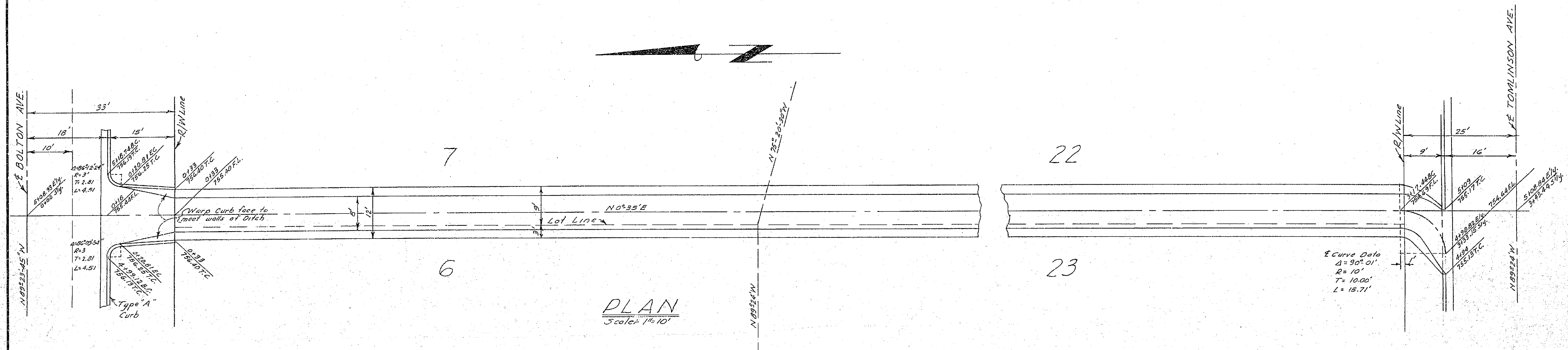
ONLY CURB AND GUTTER REQUIRED
ALONG HARRISON & SELMA AVENUES
ADDITIONAL PAVING TO BE INSTALLED
BY COUNTY

Approved this 3rd day of Dec., 1957
by *Paul J. Deane*
Road Commissioner, Riverside County

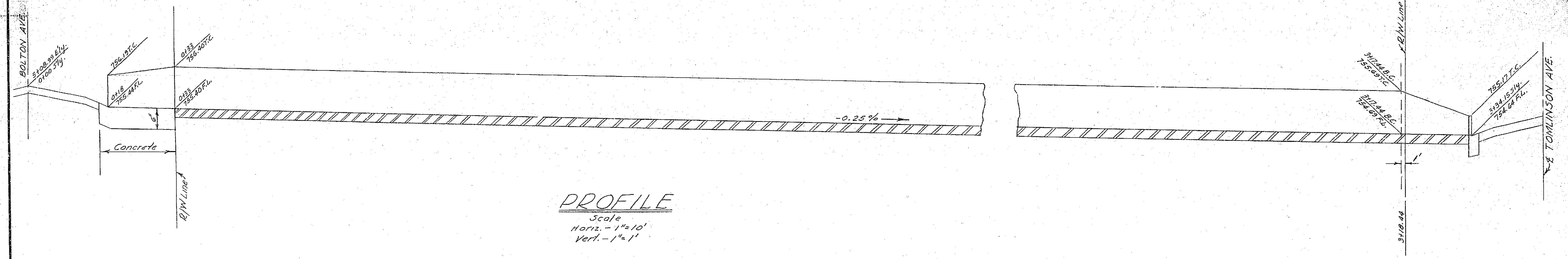
Notes and Grades Added		DATE	REC. BY
REVISIONS		DATE	BY
ARLINGTON FOOTHILLS			
STREET PLAN & PROFILE OF SELMA AVENUE & HARRISON STREET			
SCALE 1"=50'	DATE Oct. 57	DRAWN R.E.G.	TRACED
CHECKED	F. B.	RIVERSIDE	CALIFORNIA
ALBERT A. WEBB ASSOCIATES CIVIL ENGINEERS		W.O. 57-233 SHEET 3 OF 4 SHEETS DWS. NO. 57-253B	



729-H
R-688



PLAN
Scale: 1"=10'

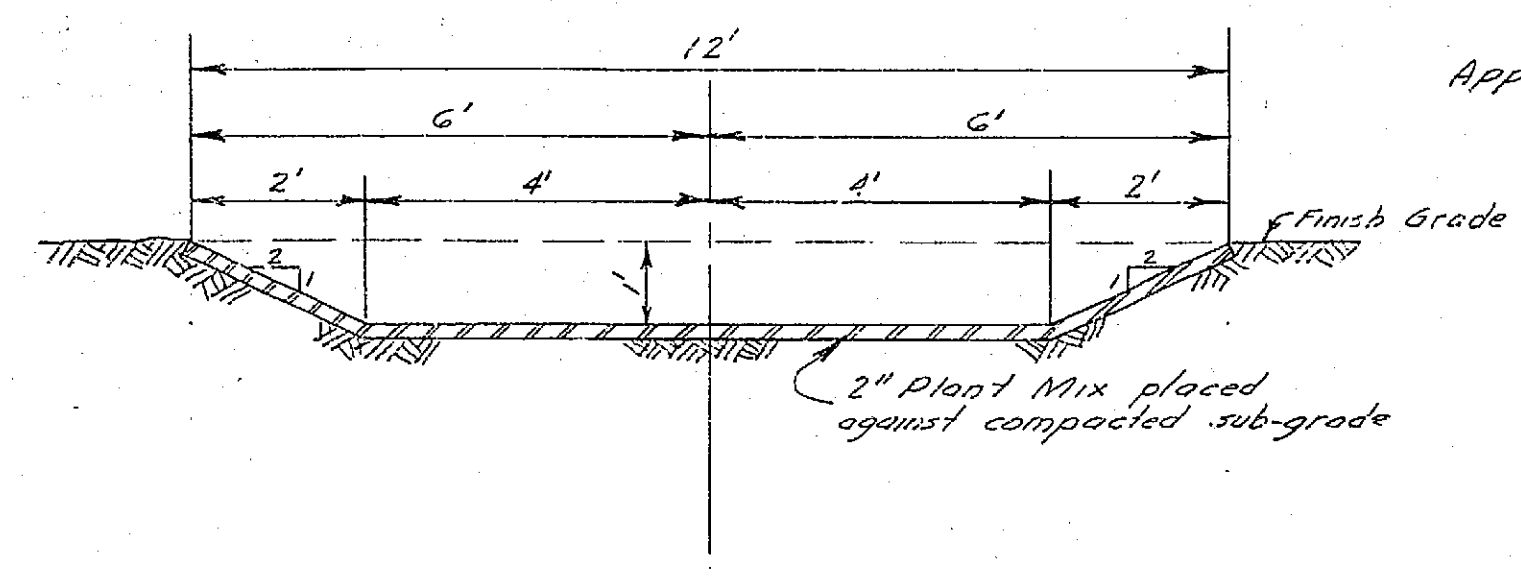


PROFILE
Scale
Horiz. - 1"=10'
Vert. - 1"=1'

QUANTITY ESTIMATE

Concrete 4.5 cu.yds.
2" Plant Mix Asphalt - 3760 sq.ft.

NOTE:
This estimate is for all materials used between South curb line of Bolton Ave. and North curb line Tomlinson Ave.



TYPICAL SECTION THROUGH DITCH

Approved this 3rd day of Dec. 1957
by *Charles Stewart*
Road Commissioner, Riverside County

PROPERTY OF
COUNTY OF RIVERSIDE
Office of the Road Commissioner

Stationing Revised	DATE	BY
	12-2-57	R.E.C.
ARLINGTON FOOTHILLS		
PLAN & PROFILE OF DRAINAGE DITCH		
SCALE Noted	DATE Nov 5-57	W.O. 57-253
DRAWN R.E.C.	CIVIL ENGINEERS	SHEET 4
TRACED		OF 4 SHEETS
CHECKED	RIVERSIDE CALIFORNIA	DWG. NO. 57-253 B
F.B.		

R-688729