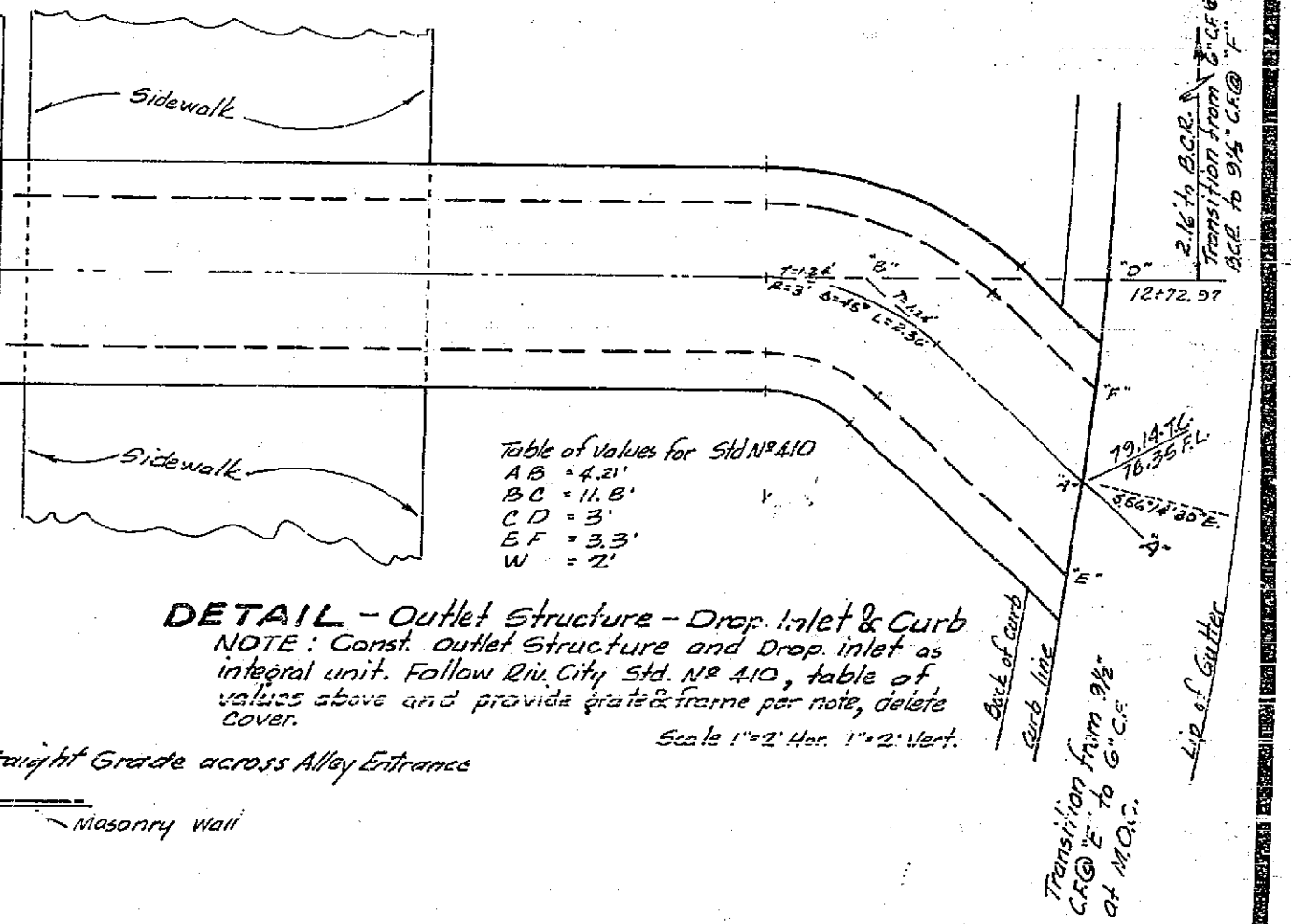
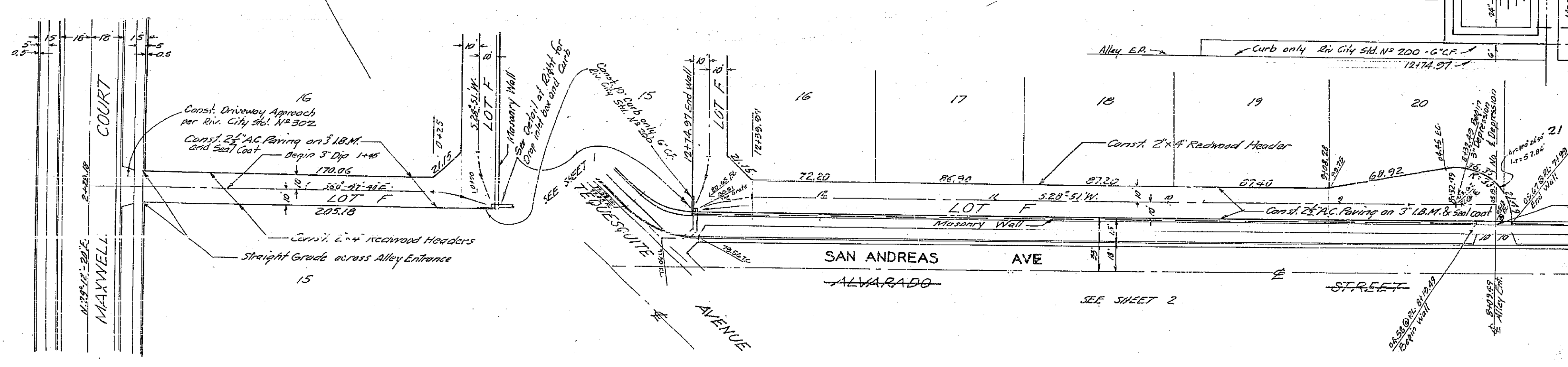


NOTE: Stationing taken from E of Alvarado Street
SAN ANDREAS AVE

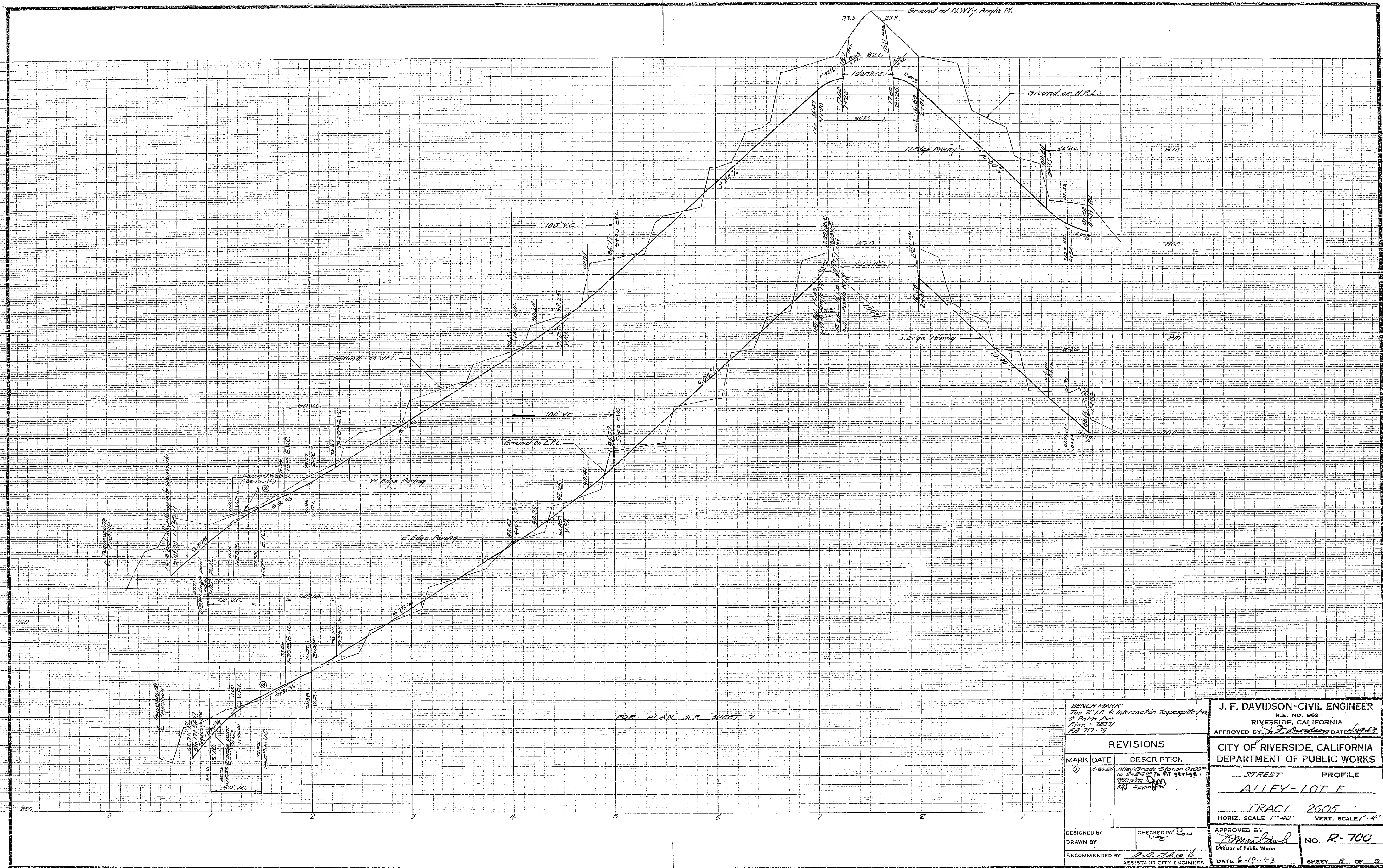


SEE SHEET 3

SEE SHEET 2

FOR TYPICAL SECTION SEE SHEET 7 AND SHEET 2
AND RIV. CITY STD. N° 110

BENCH MARK: Top 2 1/2" E Intersection Tepequito Av & Palm Ave. Elev. 783.31 F.B. 717-39		J. F. DAVIDSON - CIVIL ENGINEER R.E. NO. 862 RIVERSIDE, CALIFORNIA APPROVED BY: <i>J. F. Davidson</i> DATE: <i>4-19-63</i>	
REVISIONS MARK DATE DESCRIPTION		CITY OF RIVERSIDE, CALIFORNIA DEPARTMENT OF PUBLIC WORKS	
		STREET PLAN & PROFILE LOT F TRACT 2605 HORIZ. SCALE 1" = 40' VERT. SCALE 1" = 4'	
DESIGNED BY DRAWN BY RECOMMENDED BY	CHECKED BY <i>RUN</i> ADD. BY	APPROVED BY <i>J. F. Davidson</i> Director of Public Works	NO. R-700 DATE 6-19-63 SHEET 2 OF 2



BENCH MARK:
Top of I.P. & Intersection Tequesquite Ave
at Palm Ave
Elev. = 103.71
F.B. 717-39

J. F. DAVIDSON - CIVIL ENGINEER
R.E. NO. 862
RIVERSIDE, CALIFORNIA
APPROVED BY *J. F. Davidson* DATE *4/19/63*

REVISIONS		
MARK	DATE	DESCRIPTION
①	4-30-64	Alley Grade Station OACD to 2'-55" to fit garage. 227' up. <i>Don</i> not approved

CITY OF RIVERSIDE, CALIFORNIA
DEPARTMENT OF PUBLIC WORKS

STREET PROFILE
ALLEY - LOT F

TRACT 2605

HORIZ. SCALE 1"=40' VERT. SCALE 1"=4'

DESIGNED BY
DRAWN BY
RECOMMENDED BY *J. F. Davidson*
ASSISTANT CITY ENGINEER

CHECKED BY *Ron*
DATE

APPROVED BY *J. F. Davidson*
DIRECTOR OF PUBLIC WORKS

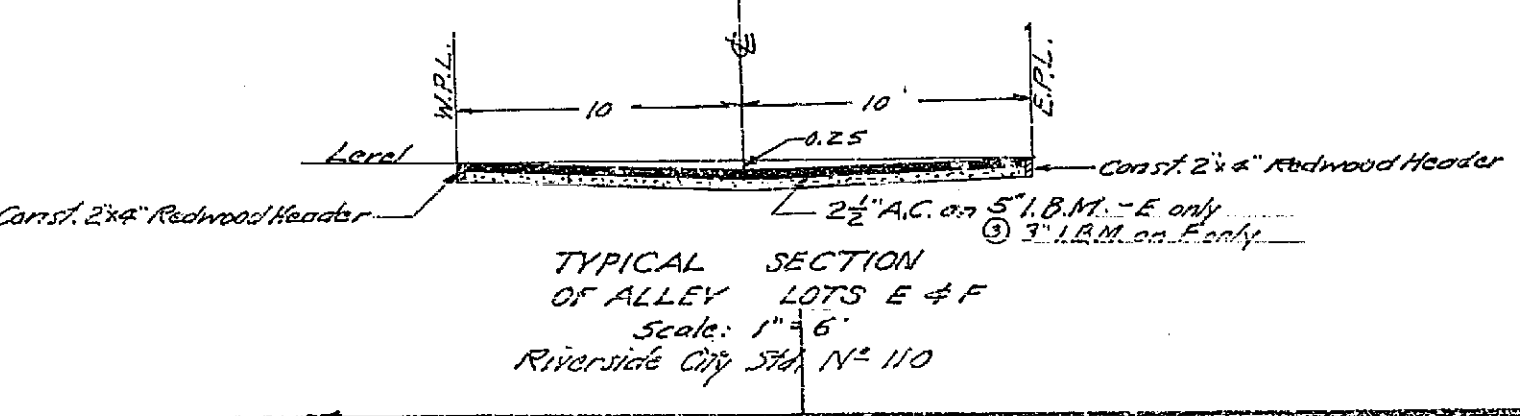
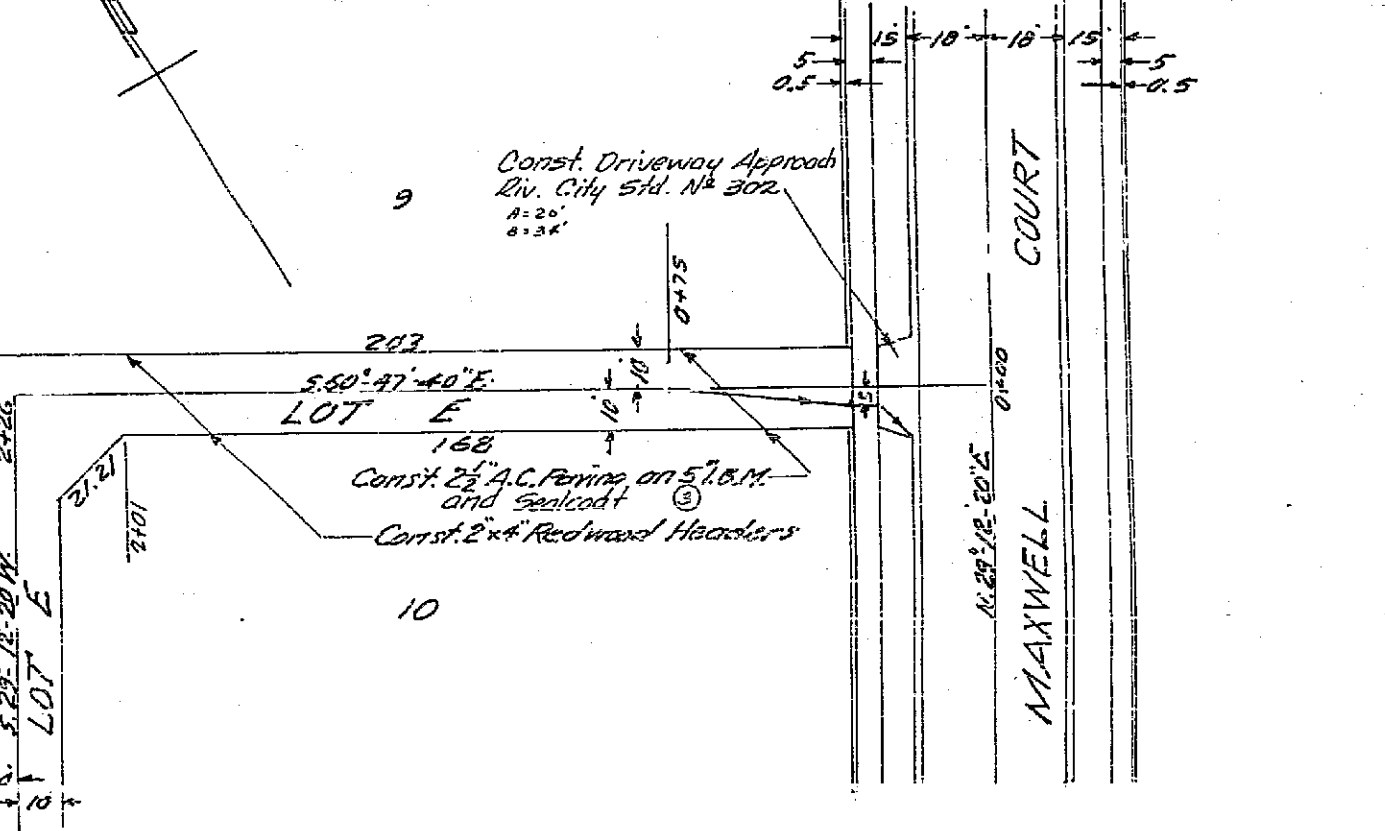
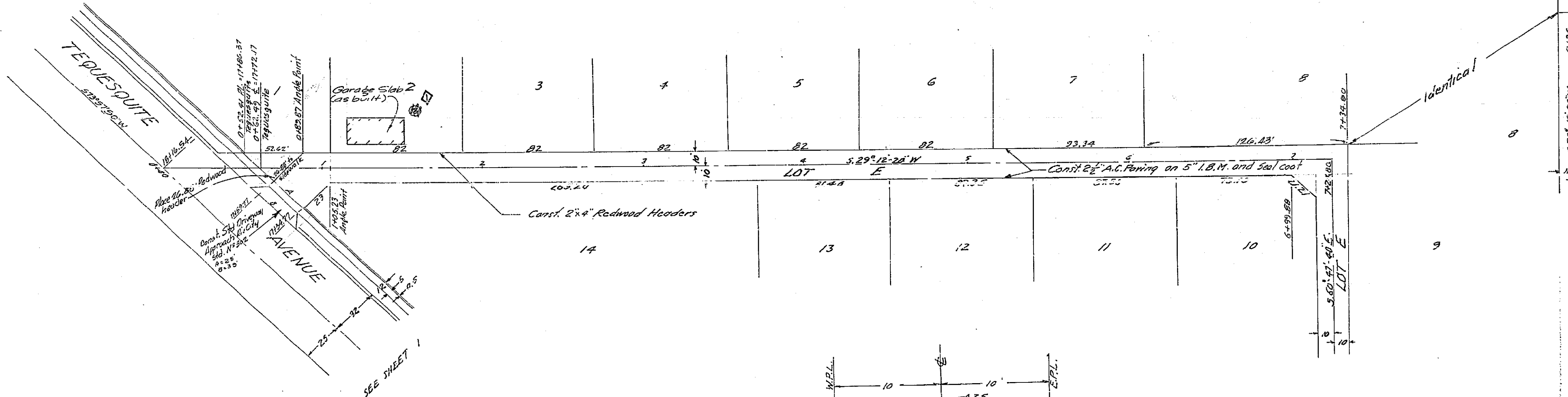
DATE *6-19-63*

NO. R-700

SHEET 8 OF 9

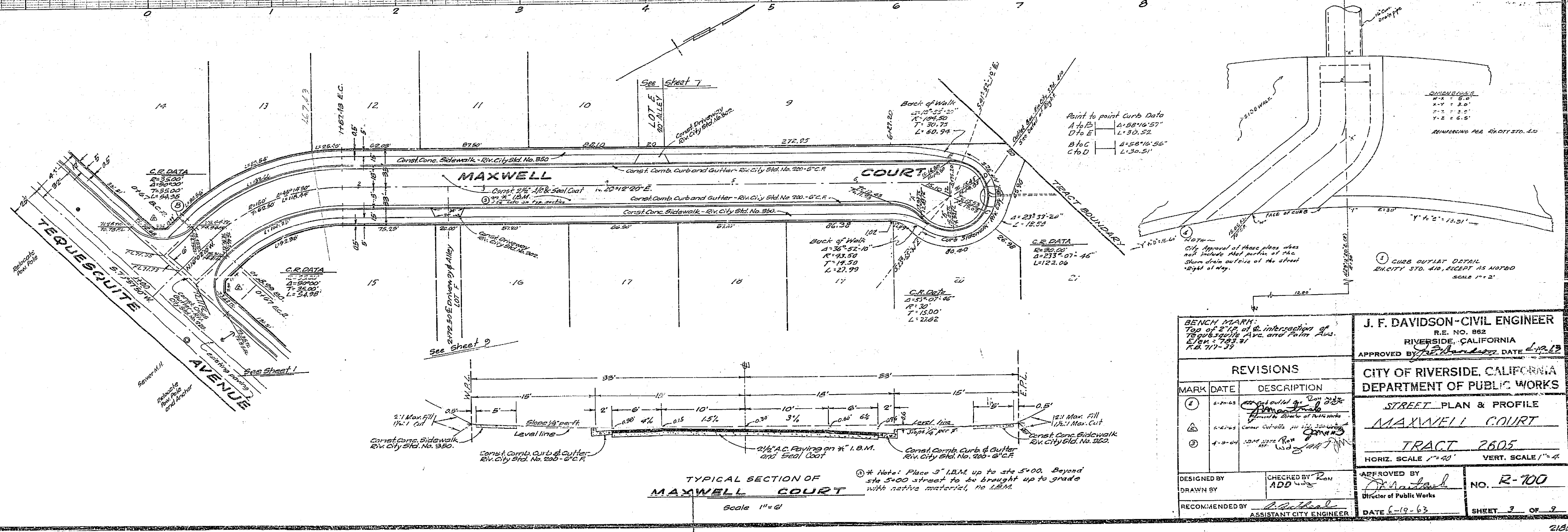
FOR REFERENCE SEE SHEET B

SEE SHEET 3



BENCH MARK: Top of 2" I.B.M. at Intersection Tequesquite Av & Palm Ave. Elev. = 783.31 E.B. 117-39		J. F. DAVIDSON - CIVIL ENGINEER R.E. NO. 862 RIVERSIDE, CALIFORNIA APPROVED BY: <i>J. F. Davidson</i> DATE: 6-19-63	
REVISIONS			
MARK	DATE	DESCRIPTION	
⊙	1-2-63	1" x 6" Alleyway	
⊙	4-30-63	Show garage, wdg. app.	
		CITY OF RIVERSIDE, CALIFORNIA DEPARTMENT OF PUBLIC WORKS STREET PLAN & PROFILE LOT E TRACT 2605 HORIZ. SCALE 1" = 40' VERT. SCALE 1" = 4'	
DESIGNED BY	CHECKED BY	APPROVED BY	NO. R-700
DRAWN BY	ADD L&S	<i>J. F. Davidson</i> Director of Public Works	
RECOMMENDED BY	<i>J. F. Davidson</i> ASSISTANT CITY ENGINEER	DATE 6-19-63	SHEET 7 OF 2

FOR PROFILE SEE SHEET A



BENCH MARK:
Top of 2" P. of intersection of
Tequesquite Ave and Palm Ave.
Elev. = 783.71
F.B. 711-39

MARK	DATE	DESCRIPTION
①	6-20-63	Added outlet to curb
②	6-20-63	Added curb outlet to 111' 30" mark
③	6-20-63	Added curb outlet to 111' 30" mark

J. F. DAVIDSON - CIVIL ENGINEER
R.E. NO. 862
RIVERSIDE, CALIFORNIA
APPROVED BY *J. F. Davidson* DATE 6-19-63

CITY OF RIVERSIDE, CALIFORNIA
DEPARTMENT OF PUBLIC WORKS
STREET PLAN & PROFILE
MAXWELL COURT
TRACT 2605
HORIZ. SCALE 1"=40' VERT. SCALE 1"=4'

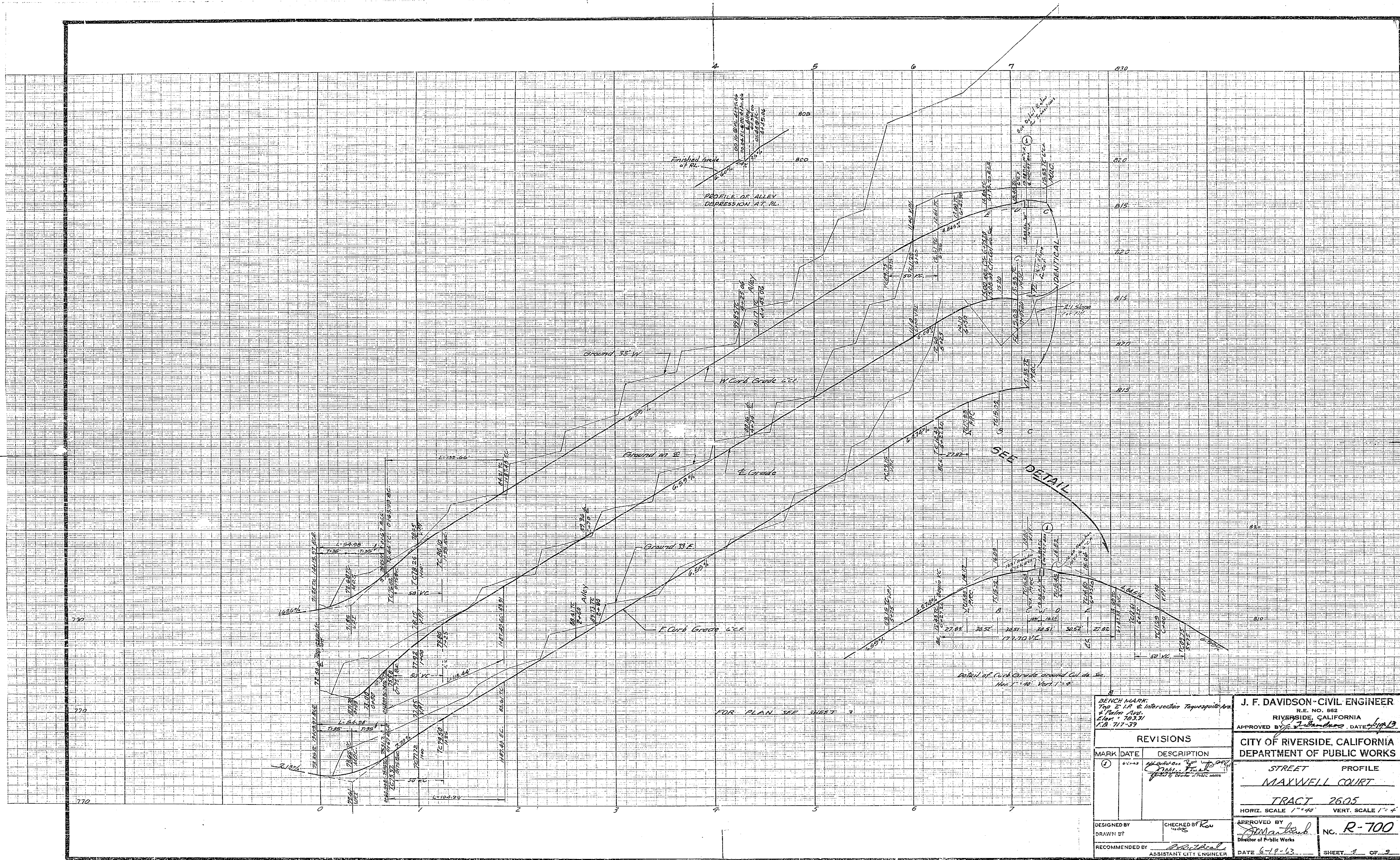
DESIGNED BY *ADD* CHECKED BY *RAN*
DRAWN BY *ADD* DIRECTOR OF PUBLIC WORKS

RECOMMENDED BY *ADD* ASSISTANT CITY ENGINEER DATE 6-19-63

NO. **R-700** SHEET 3 OF 9

TYPICAL SECTION OF MAXWELL COURT
Scale 1"=4'

* Note: Place 3" I.B.M. up to sta 5+00. Beyond sta 5+00 street to be brought up to grade with native material, no I.B.M.



BENCH MARK:
Top of I.P. at intersection Taguezquito Ave
& Palm Ave.
Elev: 78.31
I.B. 117-37

J. F. DAVIDSON - CIVIL ENGINEER
R.E. NO. 882
RIVERSIDE, CALIFORNIA
APPROVED BY: *[Signature]* DATE: *[Date]*

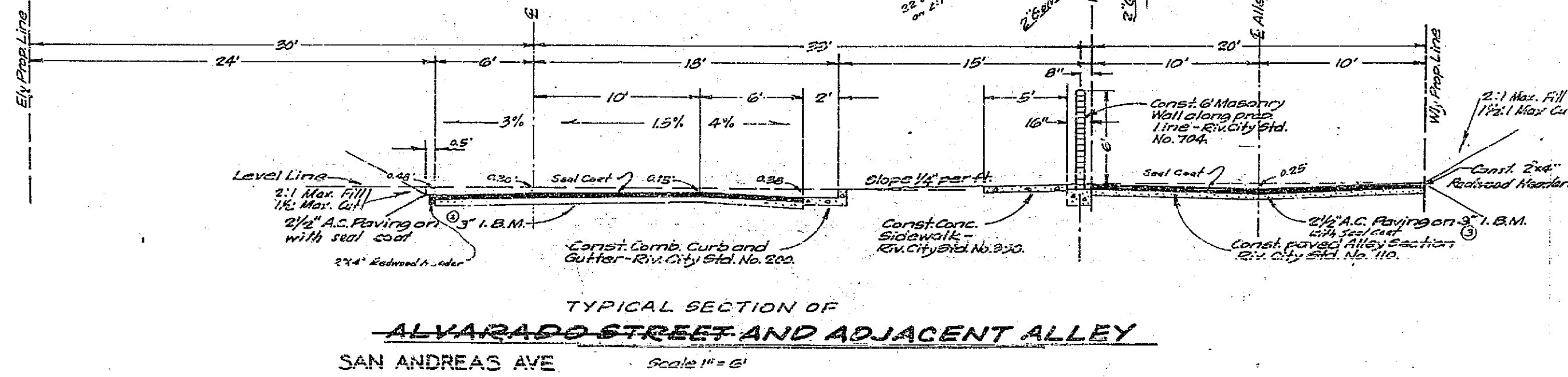
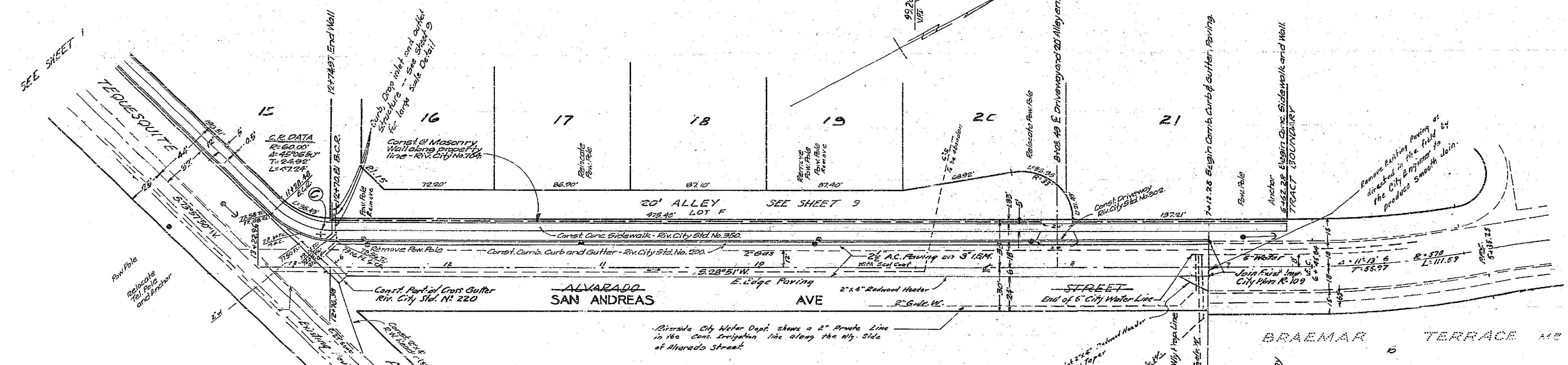
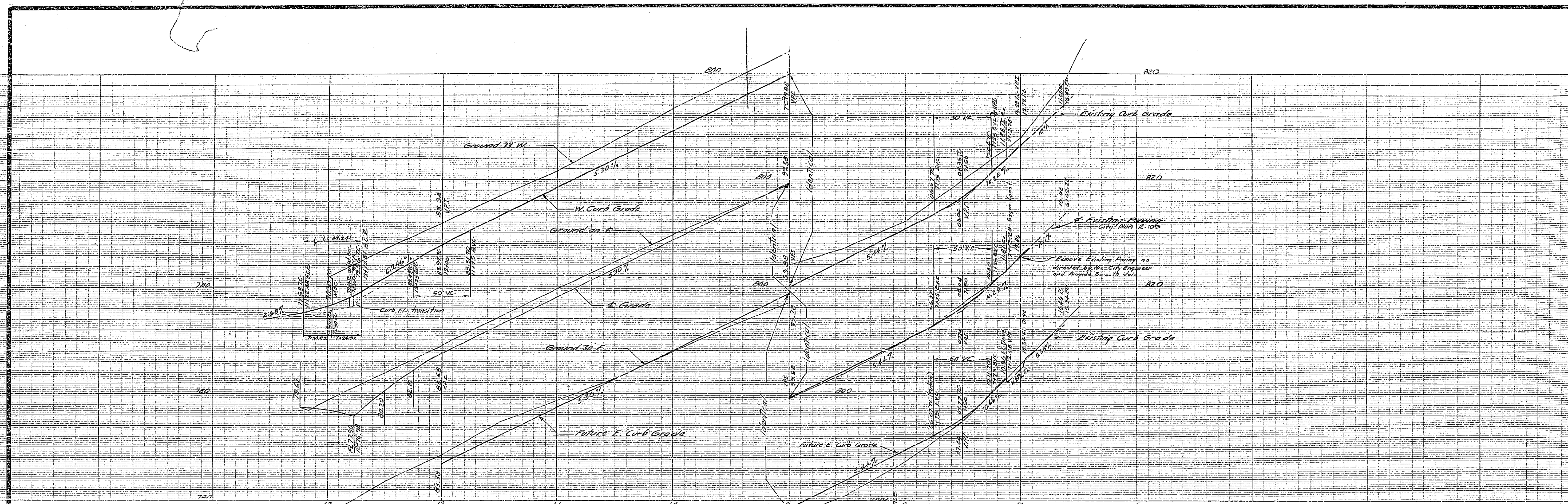
CITY OF RIVERSIDE, CALIFORNIA
DEPARTMENT OF PUBLIC WORKS

STREET PROFILE
MAXWELL COURT
TRACT 2605
HORIZ. SCALE 1"=40' VERT. SCALE 1"=4'

MARK	DATE	DESCRIPTION
①	6-18-63	Final Check by [Signature]

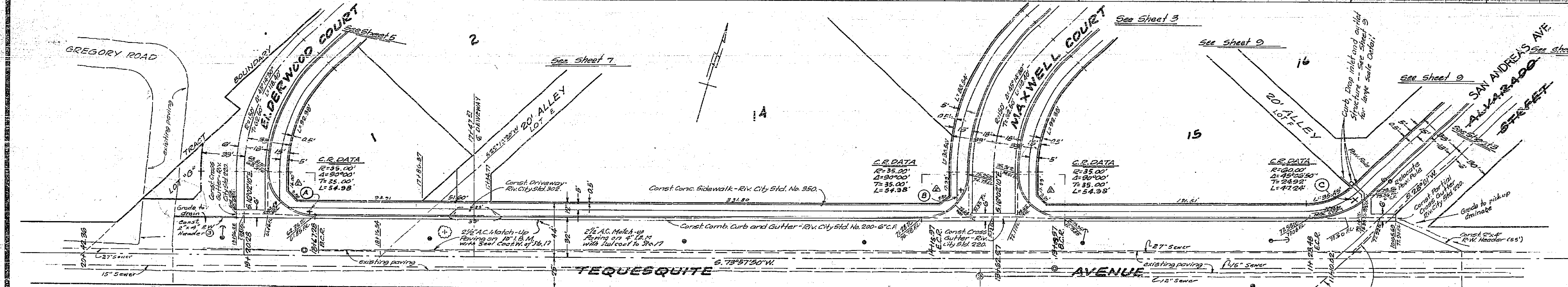
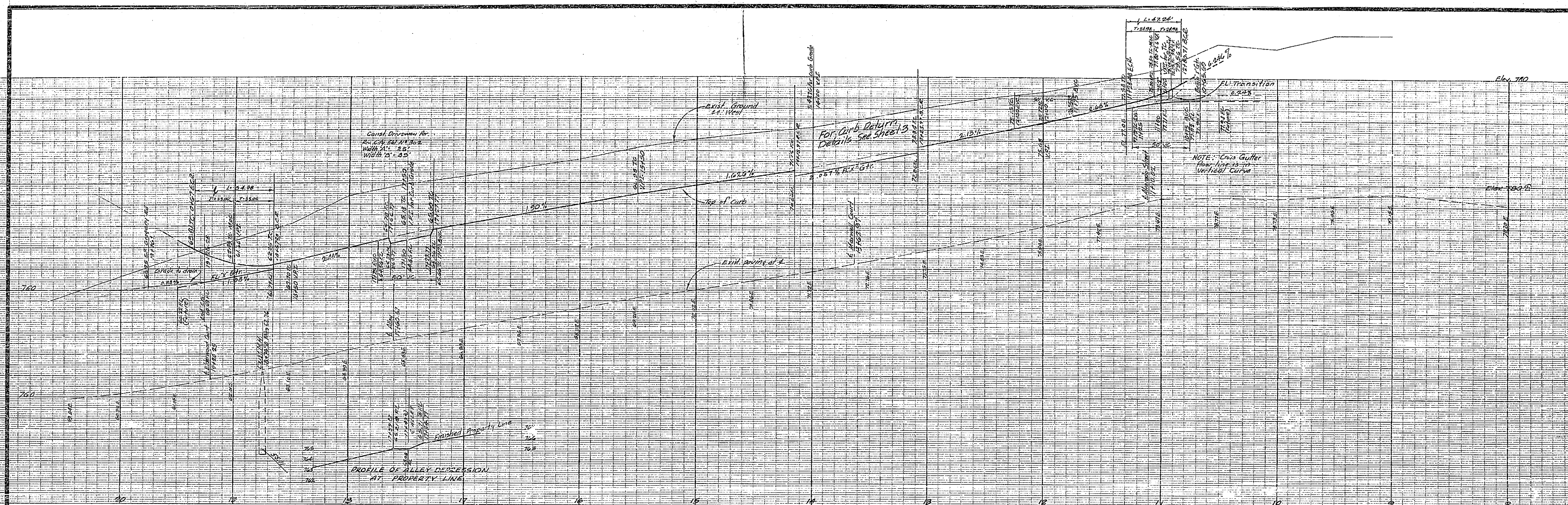
DESIGNED BY: _____ CHECKED BY: *[Signature]*
DRAWN BY: _____ RECOMMENDED BY: *[Signature]*
ASSISTANT CITY ENGINEER

DATE 6-18-63 SHEET 1 OF 2



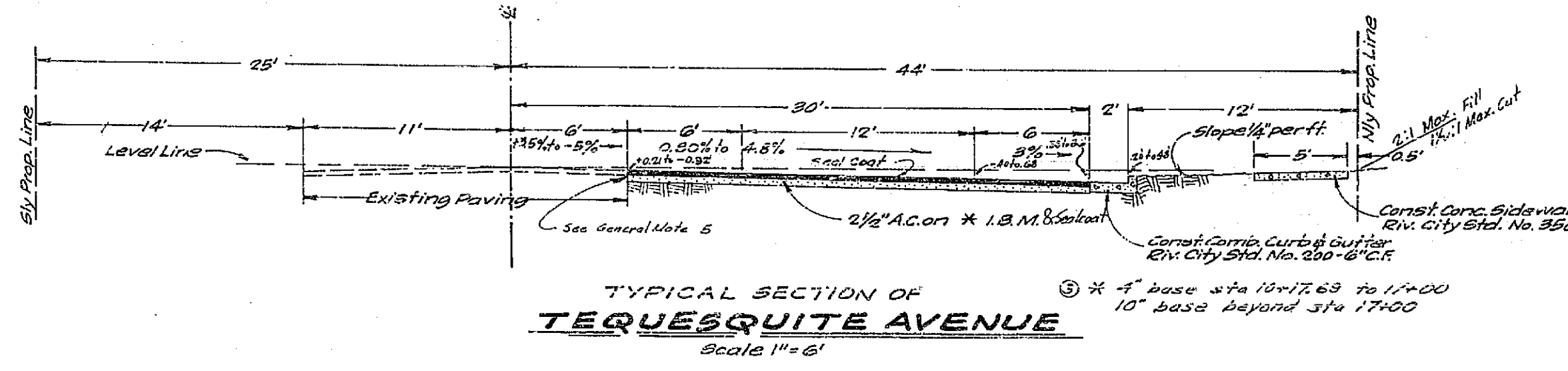
TYPICAL SECTION OF
ALVARADO STREET AND ADJACENT ALLEY
 SAN ANDREAS AVE
 Scale 1" = 6'
 Sta. 8100 to Sta. 11175

Bench Mark Top of UC in Intersecting Telegraph Ave & Palm Ave Elev. = 783.71 C.S. 717-31		J.F. DAVIDSON - CIVIL ENGINEER R.E. No. 862 RIVERSIDE, CALIFORNIA APPROVED BY: <i>[Signature]</i> DATE: 6-19-63	
REVISIONS			
MARK	DATE	DESCRIPTION	
6	6-19-63	as shown on <i>[Signature]</i>	
DESIGNED BY: <i>[Signature]</i> DRAWN BY: <i>[Signature]</i> RECOMMENDED BY: <i>[Signature]</i> ASSISTANT CITY ENGINEER		CITY OF RIVERSIDE, CALIFORNIA DEPARTMENT OF PUBLIC WORKS STREET PLAN & PROFILE SAN ANDREAS AVE ALVARADO STREET TRACT 2605 HORIZ. SCALE 1" = 40' VERT. SCALE 1" = 4' APPROVED BY: <i>[Signature]</i> DIRECTOR OF PUBLIC WORKS DATE: 6-19-63 NO. R-700 SHEET 2 OF 3	



STREET NAME SIGN SCHEDULE	
NAME	NO.
A TEQUESQUITE AVE.	5000
B ELDERWOOD ST.	4800
C TEQUESQUITE AVE.	5000
MAXWELL CT.	4700
TEQUESQUITE AVE.	4900
ALVARADO ST.	4700

1. Street name signs to be furnished and installed as per Civ. City Ord. 17-552.
2. Sign numbers to be assigned by the City Traffic Division prior to ordering Street Name Signs.



TYPICAL SECTION OF
TEQUESQUITE AVENUE
Scale 1" = 6'

- GENERAL NOTES**
1. All construction shall be in accordance with Standards and Specifications No. 461 of the City of Riverside Department of Public Works.
 2. It shall be the responsibility of the Contractor to clear the Right of Way in accordance with the provisions of law as it affects such utility including irrigation lines and appurtenances, and at no extra cost to the City of Riverside.
 3. The City of Riverside will take a soil test to determine the Import Road Material thickness after the streets have been rough graded.
 4. Prime Coat and Paint Binder Required.
 5. Trim edges of existing paving to a clean straight line. Construct match-up paving and overlap on existing paving as directed in the field to produce a smooth crown surface.

BENCHMARK:
Top of 24" dia. pipe intersection of Tequesquite Ave. and Palm Ave. Elev. 783.91, F.S. 717-25

REVISIONS	
MARK	DATE DESCRIPTION
Δ	4-27-63 Corrected elevation of 24" dia. pipe to 783.91
⊙	4-28-63 12" dia. reduced heading to 12" dia. (see sheet 15)

J. F. DAVIDSON - CIVIL ENGINEER
R.E. NO. 862
RIVERSIDE, CALIFORNIA
APPROVED BY: *[Signature]* DATE: 4-19-63

CITY OF RIVERSIDE, CALIFORNIA
DEPARTMENT OF PUBLIC WORKS
STREET PLAN & PROFILE
TEQUESQUITE AVENUE
TRACT 2605
HORIZ. SCALE 1" = 40' VERT. SCALE 1" = 4'

DESIGNED BY: *[Signature]* CHECKED BY: *[Signature]*
DRAWN BY: *[Signature]* ADD: *[Signature]*

RECOMMENDED BY: *[Signature]* ASSISTANT CITY ENGINEER
APPROVED BY: *[Signature]* Director of Public Works
DATE: 6-19-63 SHEET 1 OF 2