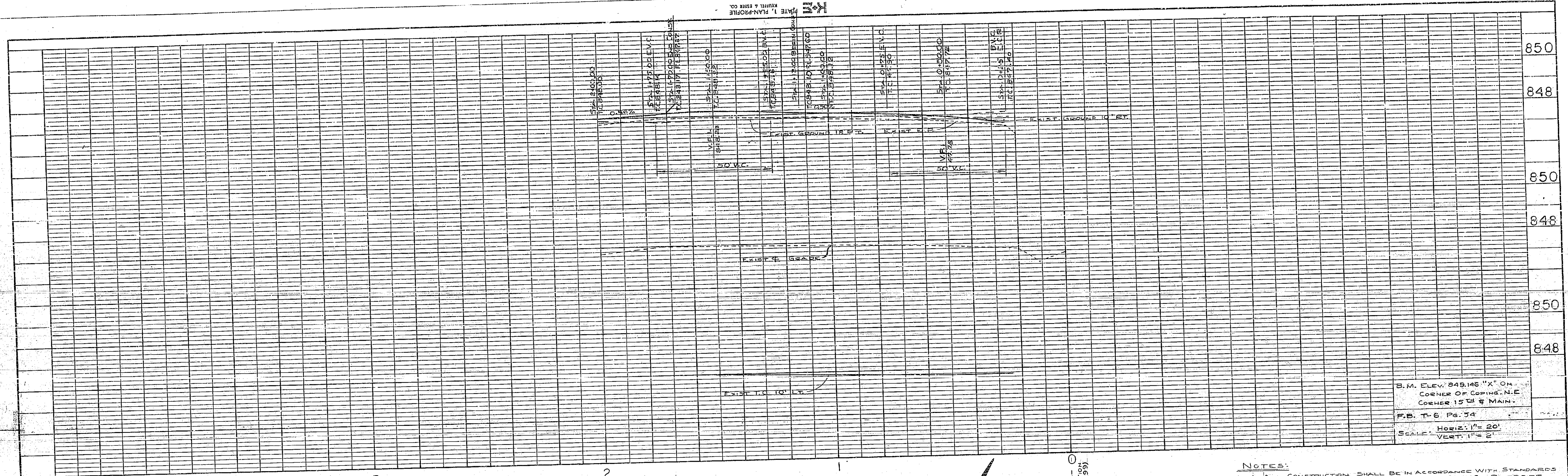
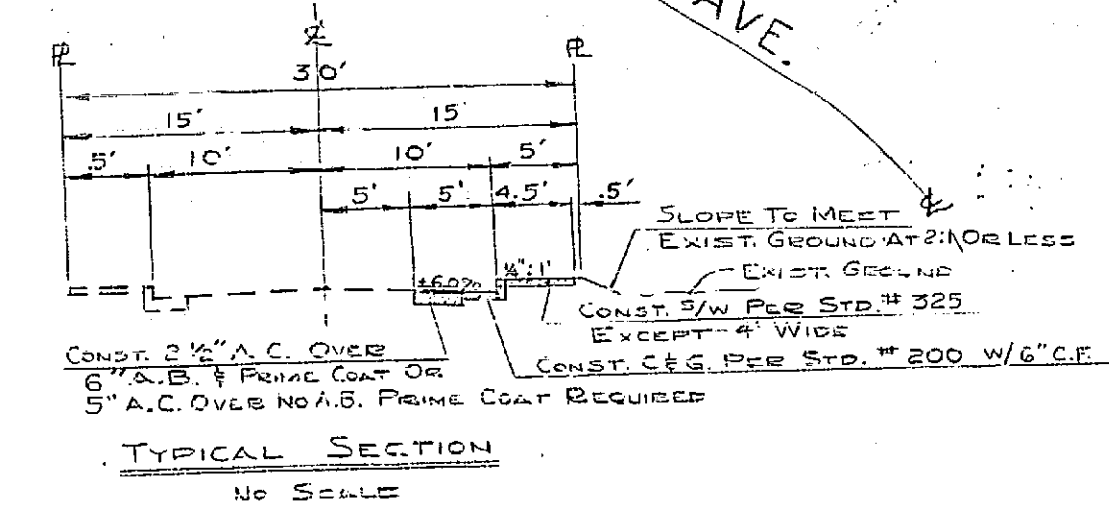
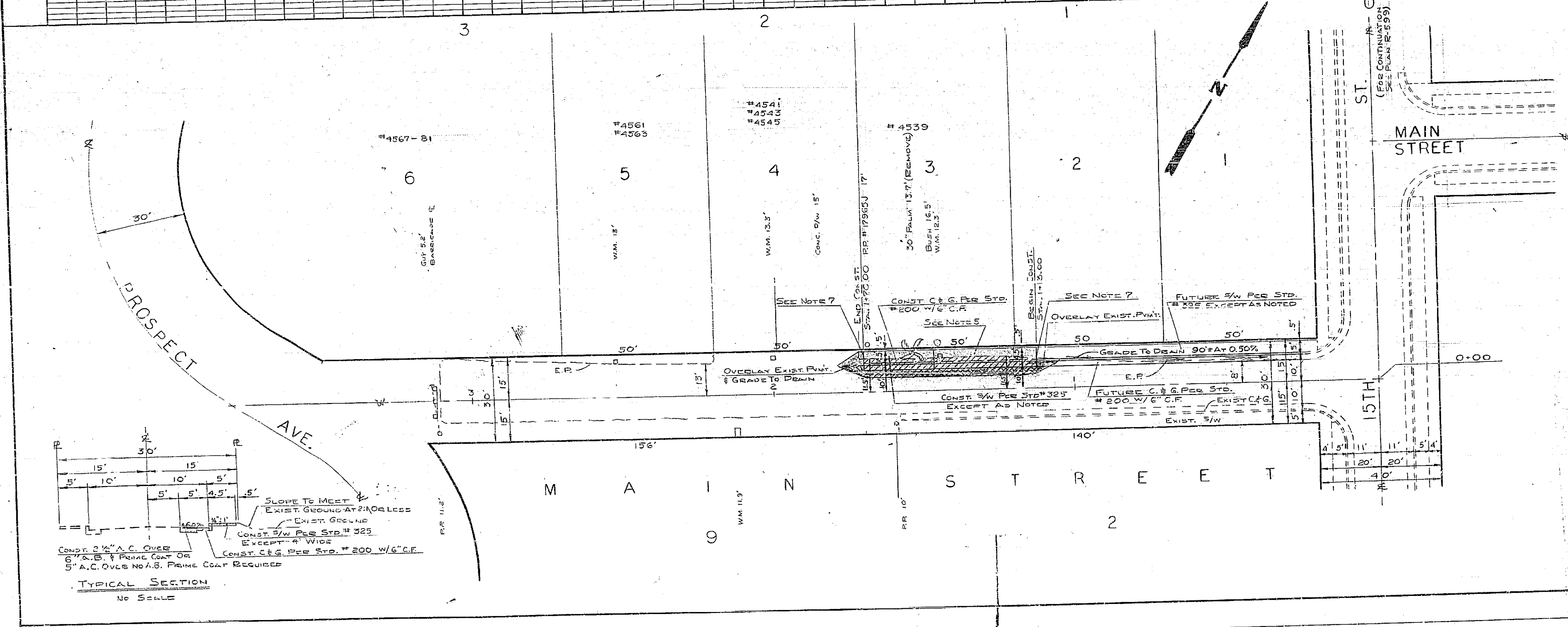


40704 HENCKELMAN & COMPANY, INC. 1985  
 WHITE 1, PLAN-PROFILE  
 KERRILL & FISKE CO.



B.M. ELEV. 849.146 "X" ON  
 CORNER OF CORP. N.E.  
 CORNER 15<sup>TH</sup> & MAIN.  
 F.B. T-6 Pg. 74  
 HORIZ. 1" = 20'  
 VERT. 1" = 2'

PROFILE	DESIGNED	BY	DATE
NOTE BOOK	DATE	BY	DATE
NO.	DATE	BY	DATE



- NOTES:**
1. ALL CONSTRUCTION SHALL BE IN ACCORDANCE WITH STANDARDS AND SPECIFICATIONS NO. 461 OF THE CITY OF RIVERSIDE, DEPT. OF PUBLIC WORKS.
  2. TERN EDGE OF PAVING TO CLEAN STRAIGHT LINE. CONSTRUCT MATCH-UP PAVING AS SHOWN AND OVERLAY EXISTING PAVING AS DIRECTED IN THE FIELD TO PRODUCE A SMOOTH CROWN SECTION.
  3. IT SHALL BE THE RESPONSIBILITY OF THE CONTRACTOR TO CLEAR THE RIGHT OF WAY IN ACCORDANCE WITH THE PROVISIONS OF THE LAW AS IT AFFECTS EACH UTILITY, INCLUDING REGULATION LINES AND APPURTENANCES, AND AT NO COST TO THE CITY.
  4. REMOVE ALL TREES IN RIGHT OF WAY WITHIN LIMITS OF CONSTRUCTION.
  5. CONSTRUCT DRIVEWAY APPROACH PER STD. DWG. # 302 24" X 20" B" 34"
  6. PRIME COAT, PAINT BINDER, AND SEAL COAT WILL BE REQUIRED.
  7. PROVIDE TRANSITION FROM S/W TO EXISTING PARKWAY AT 5% GRADE.

**LEGEND**

	REMOVE EXIST. A.C. P.V.M.T.
	CONST. 2 1/2" A.C. OVER 6" A.E. & PRIME COAT OR 5" A.C. OVER NO. 8. PRIME COAT REQUIRED.
	CONST. C.&G., S/W, P.W. APPROACH.

REVISIONS		CITY OF RIVERSIDE, CALIFORNIA DEPARTMENT OF PUBLIC WORKS	
MARK	DATE	DESCRIPTION	
		<b>MAIN STREET</b> 15TH STREET TO PROSPECT AVENUE	
DESIGNED BY	SUBMITTED BY	APPROVED BY	PROJ. NO. 1012
DRAWN BY	PARK DEPT.	TRAFFIC DIV.	R-703
CHECKED BY	RECOMMENDED BY	DATE	SHEET 1 OF 1

PLAN	DESIGNED	BY	DATE
NOTE BOOK	DATE	BY	DATE
NO.	DATE	BY	DATE