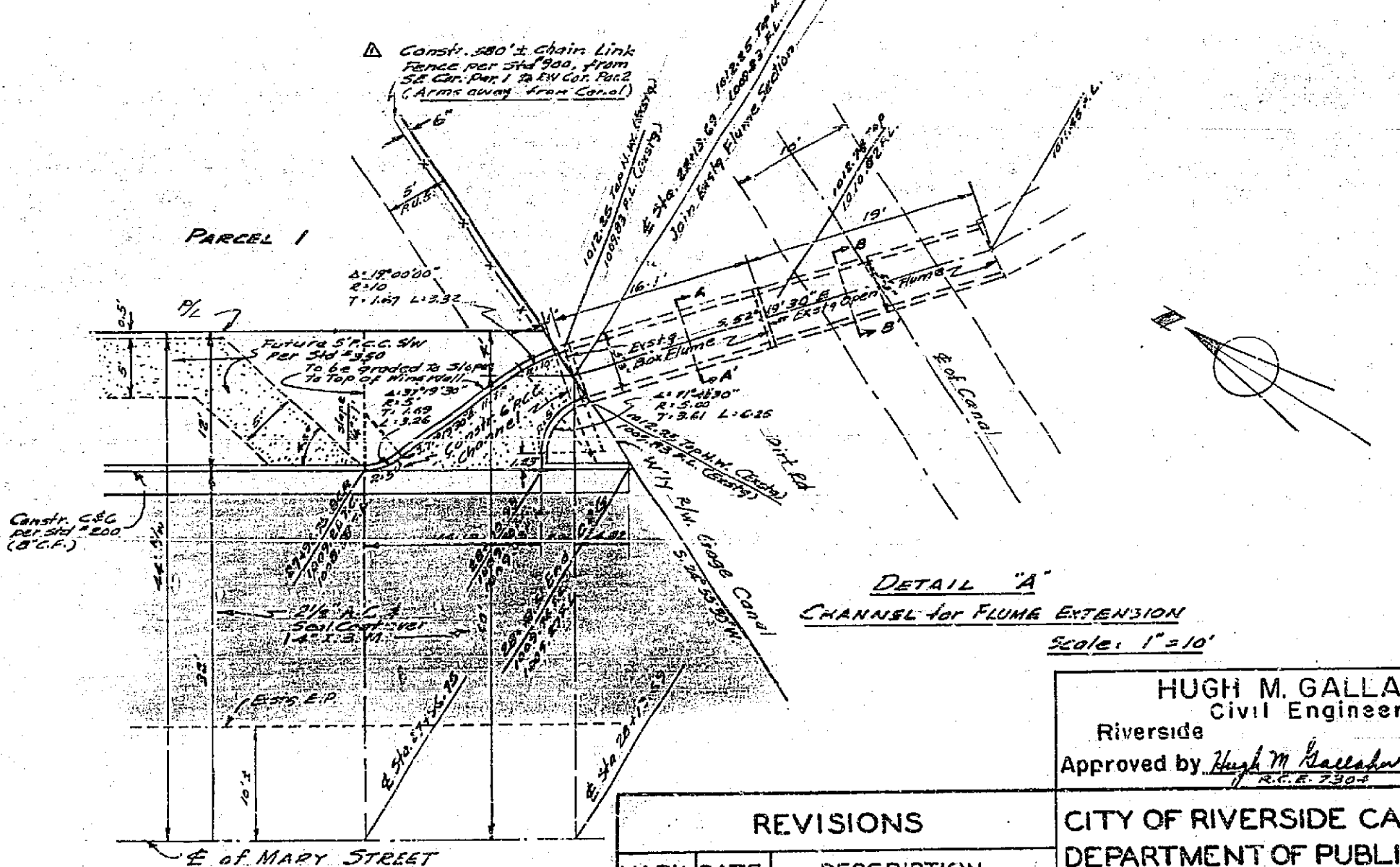
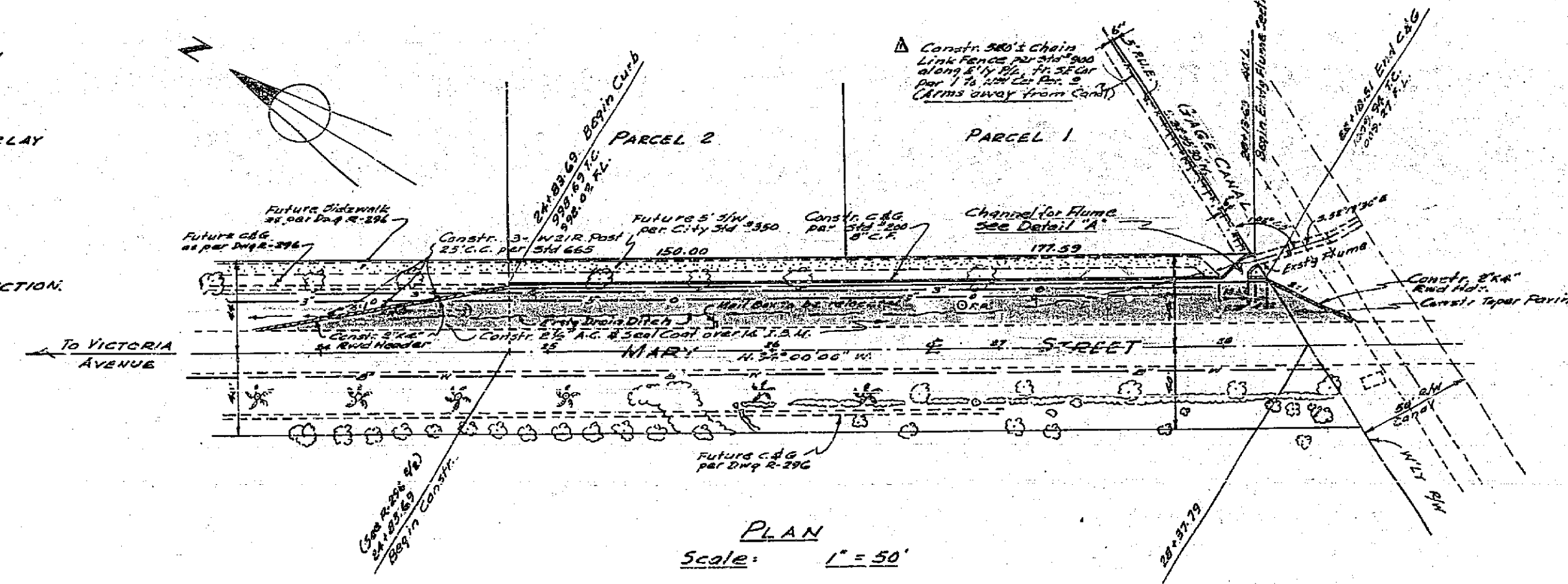
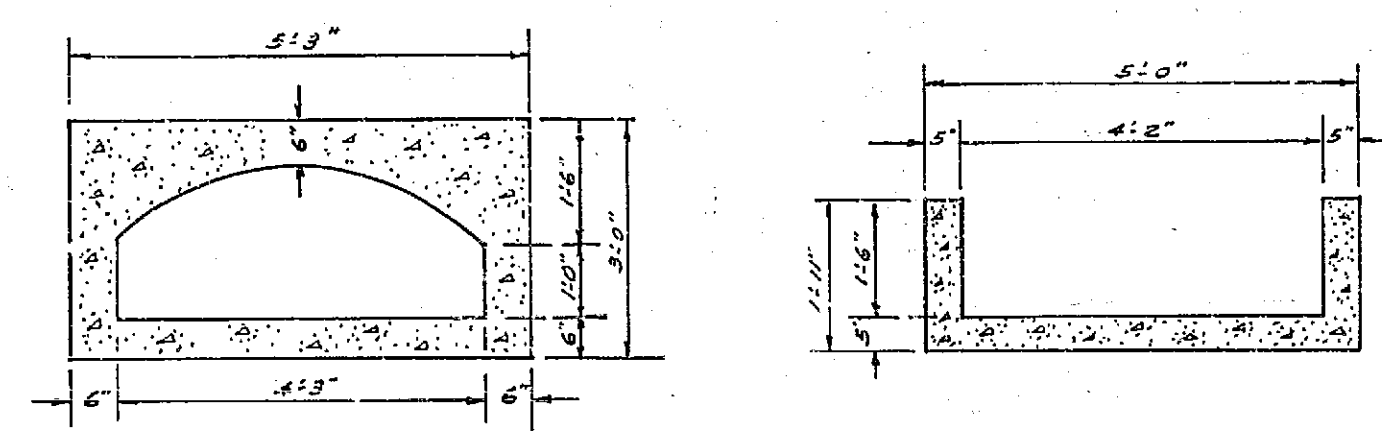
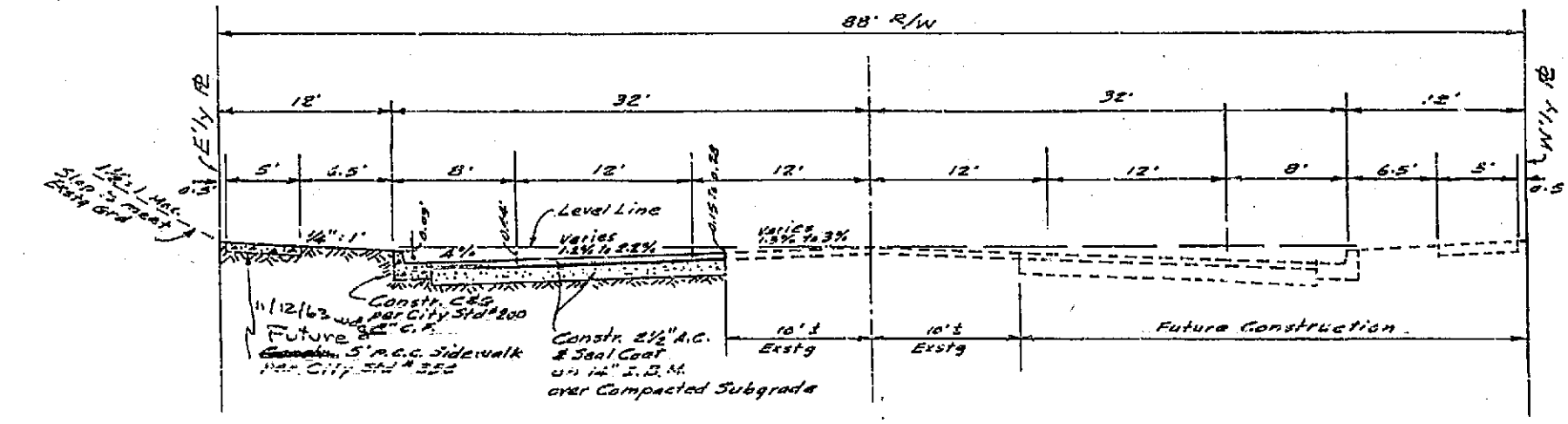


PROFILE	DATE	BY
NO. 100	10/10/63	H.M.G.

- GENERAL NOTES**
1. ALL WORK SHALL CONFORM TO SPECIFICATION NO. 461 AND APPLICABLE STANDARD DRAWINGS OF THE CITY OF RIVERSIDE.
 2. TRIM EDGE OF EXISTING PAVING TO CLEAN, STRAIGHT LINE. CONSTRUCT MATCH UP PAVING AS SHOWN AND OVERLAY EXISTING PAVING AS DIRECTED IN THE FIELD TO PRODUCE SMOOTH CROWN SECTION.
 3. IT SHALL BE THE RESPONSIBILITY OF THE CONTRACTOR TO CLEAR THE RIGHT OF WAY IN ACCORDANCE WITH THE PROVISION OF LAW AS IT AFFECTS EACH UTILITY AND APPURTENANCE AND AT NO COST TO THE CITY.
 4. REMOVE ALL TREES IN R/W WITHIN LIMITS OF CONSTRUCTION.
 5. POWER POLES WITHIN LIMITS OF CONSTRUCTION SHALL BE RELOCATED.
 6. PRIME COAT & PAINT BINDER ARE REQUIRED.



PLAN	DATE	BY
NO. 100	10/10/63	H.M.G.



REVISIONS	
MARK	DESCRIPTION
Δ	Change location of Chain Link Fence at Station 24+83.69 to 24+83.69

HUGH M. GALLAHER
 Civil Engineer
 Riverside California
 Approved by *Hugh M. Gallaher* 10/10/63

CITY OF RIVERSIDE CALIFORNIA
 DEPARTMENT OF PUBLIC WORKS

R.S. 731
STREET PLAN & PROFILE
MARY STREET
STA. 24+83.69 TO 28+13.69

DESIGNED BY: *H.M.G.*
 DRAWN BY: *H.M.G.*
 CHECKED BY: *Tom*
 RECOMMENDED BY: *H.M.G.*
 ASSISTANT CITY ENGINEER

APPROVED BY: *H.M.G.*
 DIRECTOR OF PUBLIC WORKS

DATE: 9-20-63

R-713
 SHEET 1 OF 1