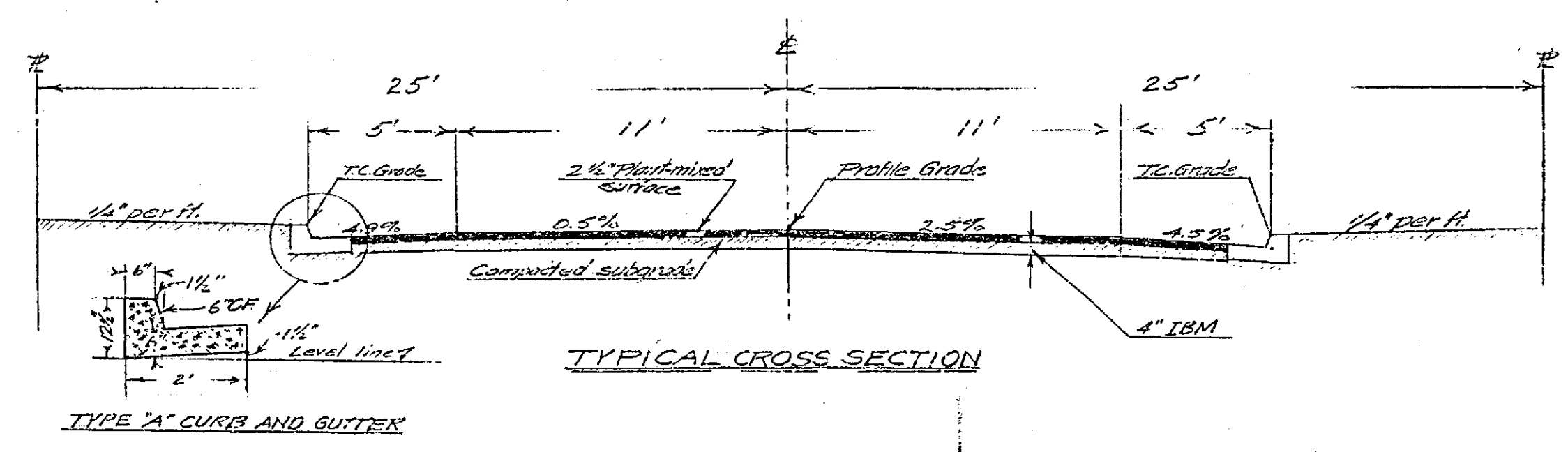
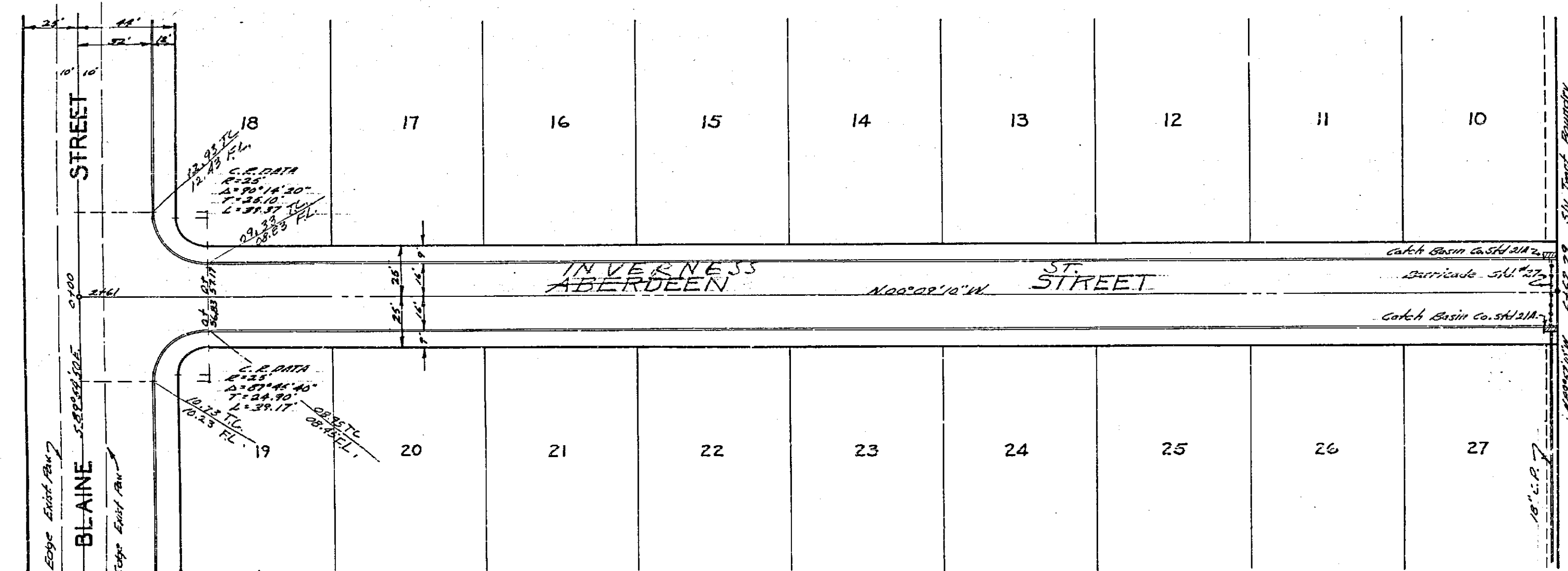
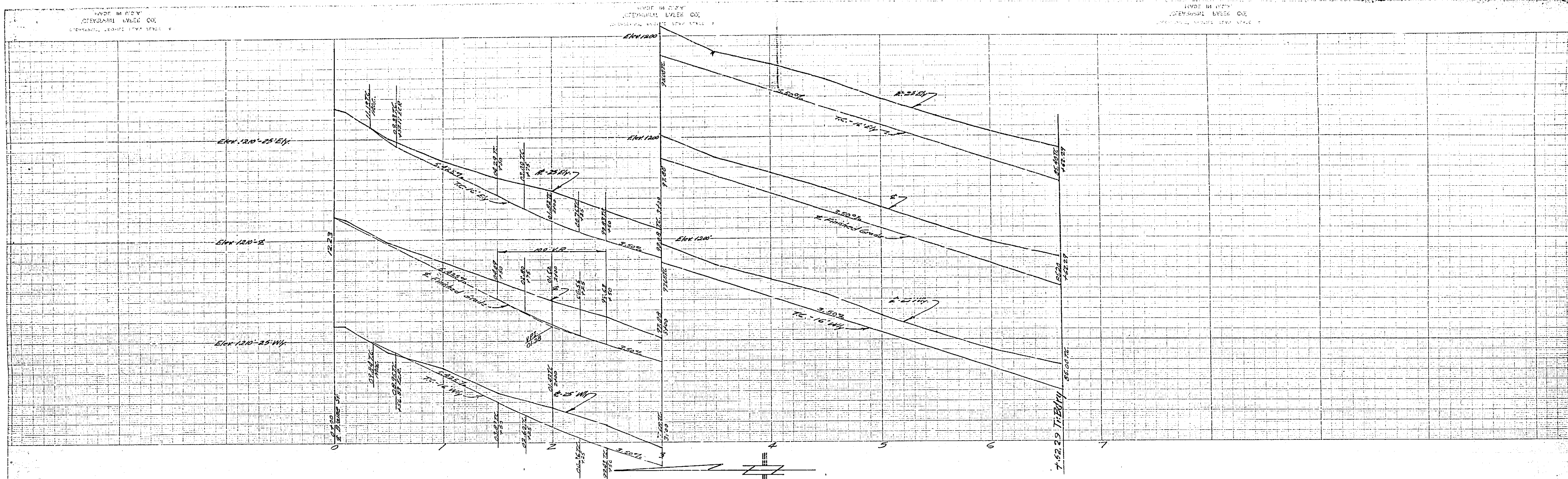


See Typical Cross Section - Sheet 3

J.F. DAVIDSON-CIVIL ENGINEER R.E. No. 862 RIVERSIDE, CALIFORNIA	
APPROVED BY <i>J. Davidson</i> , DATE 4-26-56	
PLAN AND PROFILE GRAMPION DR. FIFTH STREET	
HIGHLANDERS VILLAGE TRACT	
HORIZ. SCALE 1"=40' VERT. SCALE 1"=4'	
APPROVED BY <i>J.F.D.</i> FOR ROAD COMMISSIONER RIVERSIDE COUNTY-CALIF. DATE 3-21-57	NO. _____ SHEET 4 OF 8 SHEETS

R-723

718 P



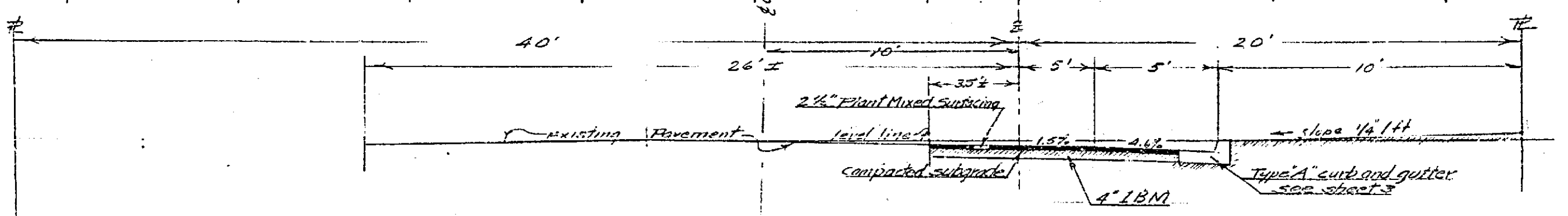
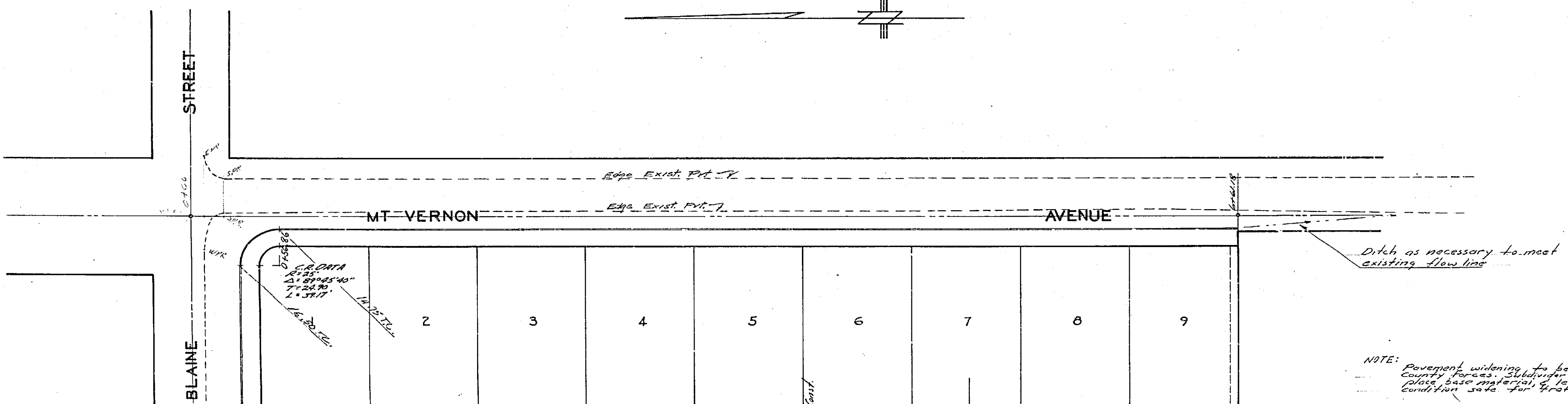
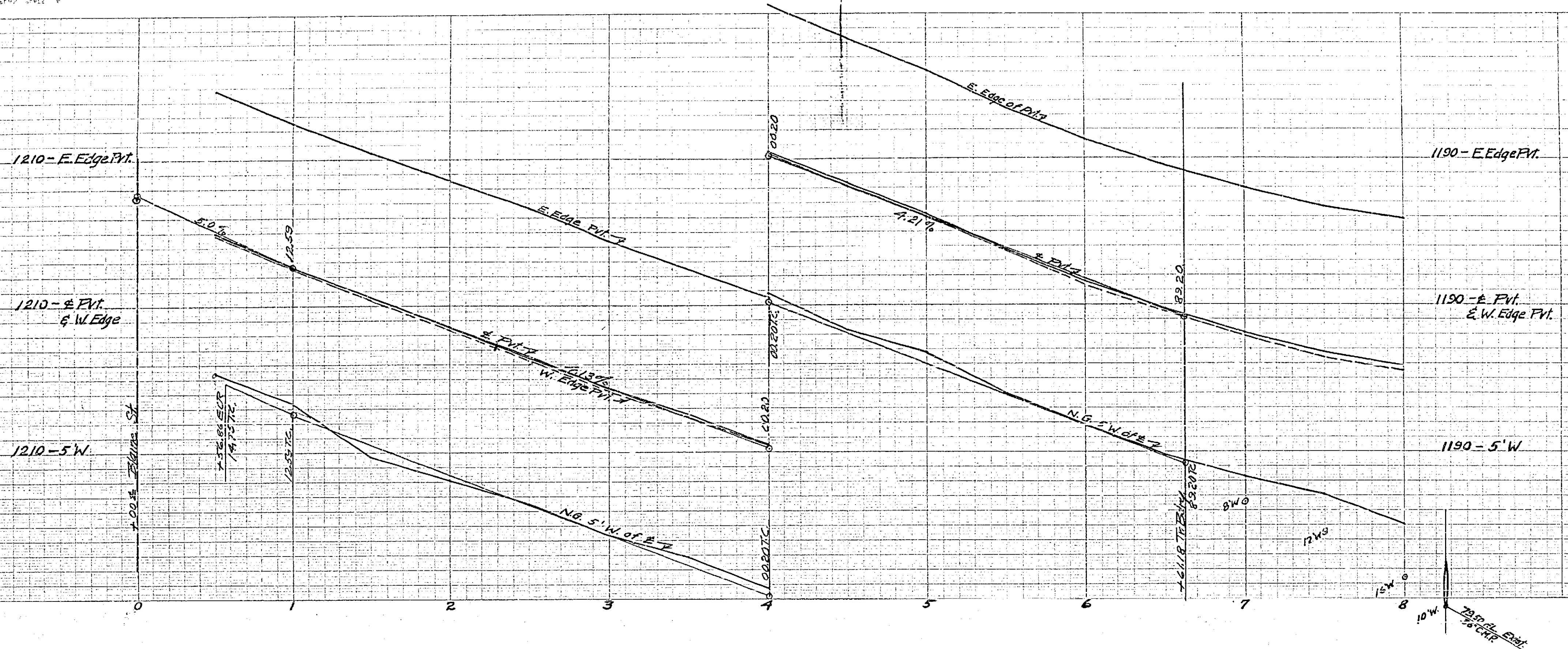
J.F. DAVIDSON-CIVIL ENGINEER
 REG. NO. 862
 RIVERSIDE, CALIFORNIA
 APPROVED BY *[Signature]* DATE 5-26-55

PLAN AND PROFILE
 ABERDEEN STREET
 HIGHLANDERS VILLAGE TRACT
 HORIZ. SCALE 1"=40' VERT. SCALE 1"=4'

APPROVED BY *[Signature]* NO. _____
 FOR ROAD COMMISSIONER
 RIVERSIDE COUNTY-CALIF.
 DATE 5-27-55 SHEET 3 OF 6 SHEETS
 R.B. 5-27-55

R-723

[Handwritten initials]



TYPICAL CROSS SECTION

NOTE: Pavement widening to be done by County Forces. Subgrade will grade, place base material, & lay in in condition and the traffic.

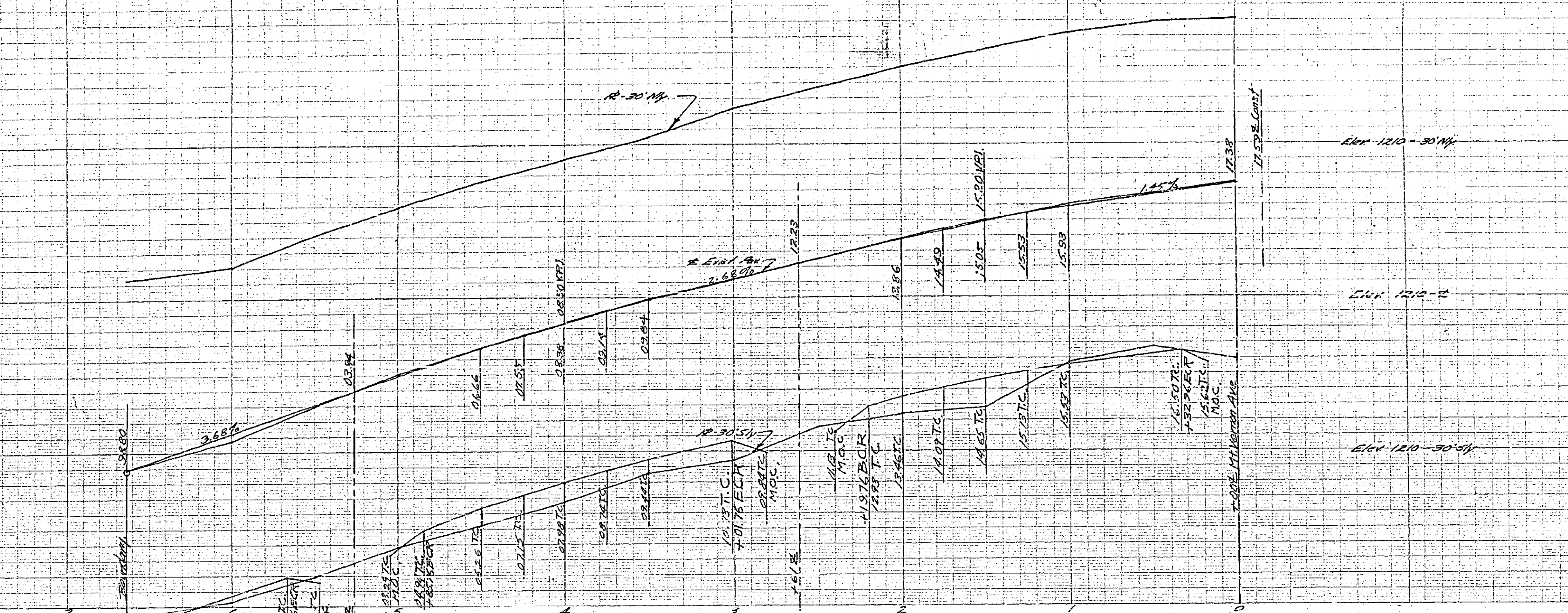
J.F. DAVIDSON - CIVIL ENGINEER
 R.E. NO. 862
 RIVERSIDE, CALIFORNIA
 APPROVED BY *[Signature]* DATE 4-26-66

PLAN AND PROFILE
 MT VERNON AVENUE
 HIGHLANDERS VILLAGE
 TRACT
 HORIZ. SCALE 1" = 40' VERT. SCALE 1" = 4'

APPROVED BY *[Signature]* NO. _____
 FOR ROAD COMMISSIONER
 RIVERSIDE COUNTY CALIF.
 DATE 6-21-66 SHEET 2 OF 6 SHEETS
 R.S. 537-66

R-723

718 R



SHEET INDEX	
STREET	SHEET NO.
BLAINE ST.	1
MT. VERNON AVE.	2
AGERDEEN ST.	3
FIRTH ST.	4
DRAINAGE DETAILS	575

BENCH MARK
Spike in Power Pole # 533184 N.E. Cor.
Blaine & Mt. Vernon Elev. 122.044

ESTIMATE OF QUANTITIES

Street Excavation	5,709 Cu. Yds.
Front-mixed Pavement	6,285 Sq. Yds.
Cuts and Gutter (Type A)	3,680 Lin. Ft.
18" Concrete Pipe	234 Lin. Ft.
18" Reinft Concrete Pipe	34 Lin. Ft.
Catch Basins Std. 21 A	3 Each
6" I.D. Iron Pipe	90 Lin. Ft.

SPECIFICATIONS NOTE

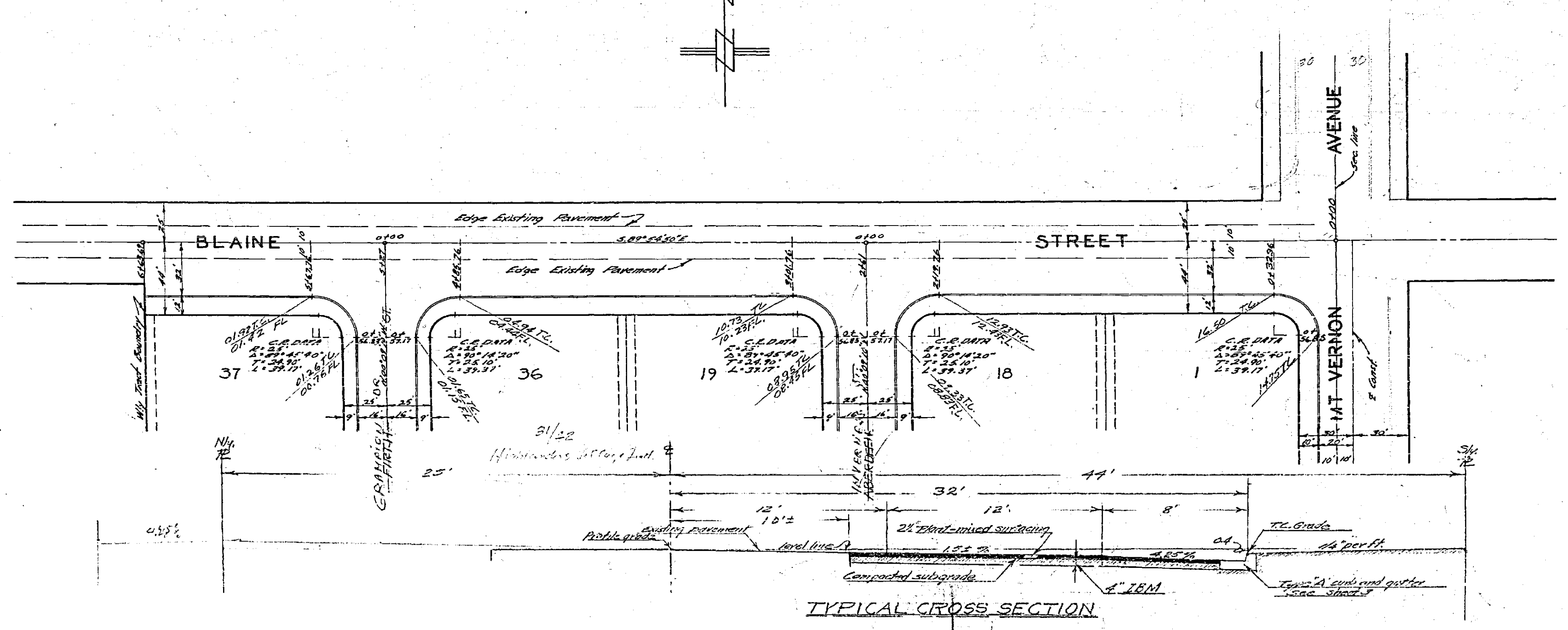
All work to conform with Subdivision Improvement Specifications of Riverside County Road Department dated 1953.

UTILITY NOTE

Existing utilities which interfere with proposed improvements are to be removed by the subdividers.

All underground installations are to be completed prior to paving operations.

Pavement widening on Blaine & Mt. Vernon to be done by County Forces. Subdivider will grade, place base material, & leave in a condition safe for traffic.



TYPICAL CROSS SECTION

J. F. DAVIDSON - CIVIL ENGINEER
RIVERSIDE, CALIFORNIA
APPROVED BY *[Signature]* DATE 5-21-56

PLAN AND PROFILE
BLAINE STREET
HIGHLANDERS VILLAGE
TRACT
HORIZ. SCALE 1"=40' VERT. SCALE 1"=4'

APPROVED BY *[Signature]* NO. _____
FOR ROAD COMMISSIONER
RIVERSIDE COUNTY, CALIF.
DATE 5-21-56 SHEET 1 OF 6 SHEETS

R-723

R.B. 527-75
R.B. 527-66 418-R