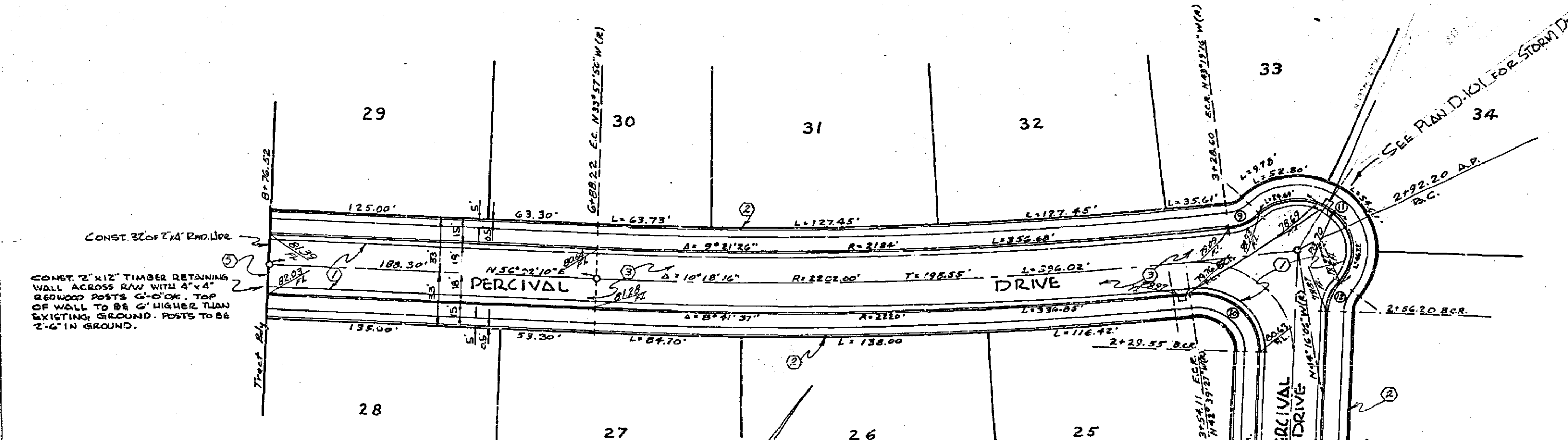


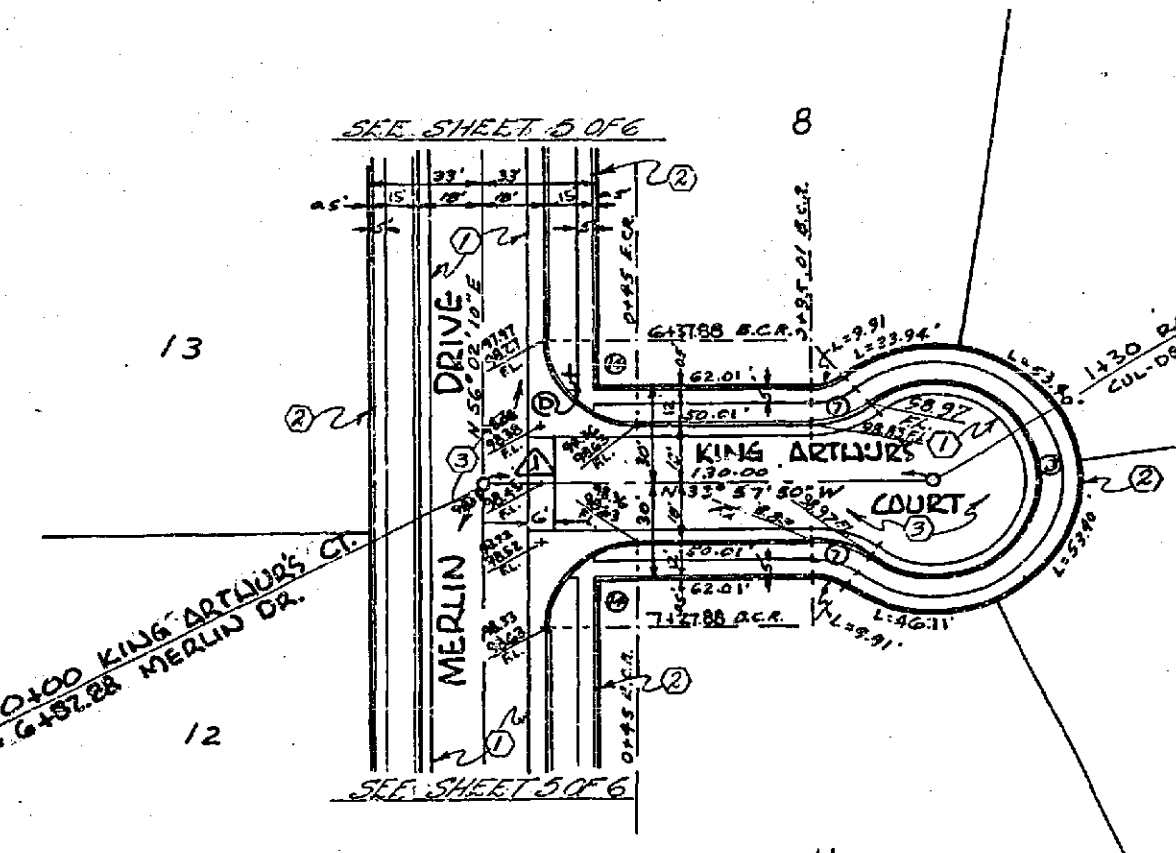
PROFILE	NO.	DATE	BY	DATE

BENCH MARK: Elevation 973.64; Top of capped monument at intersection of Avenue 51 and Victoria Ave. 1-23-1929/1935.

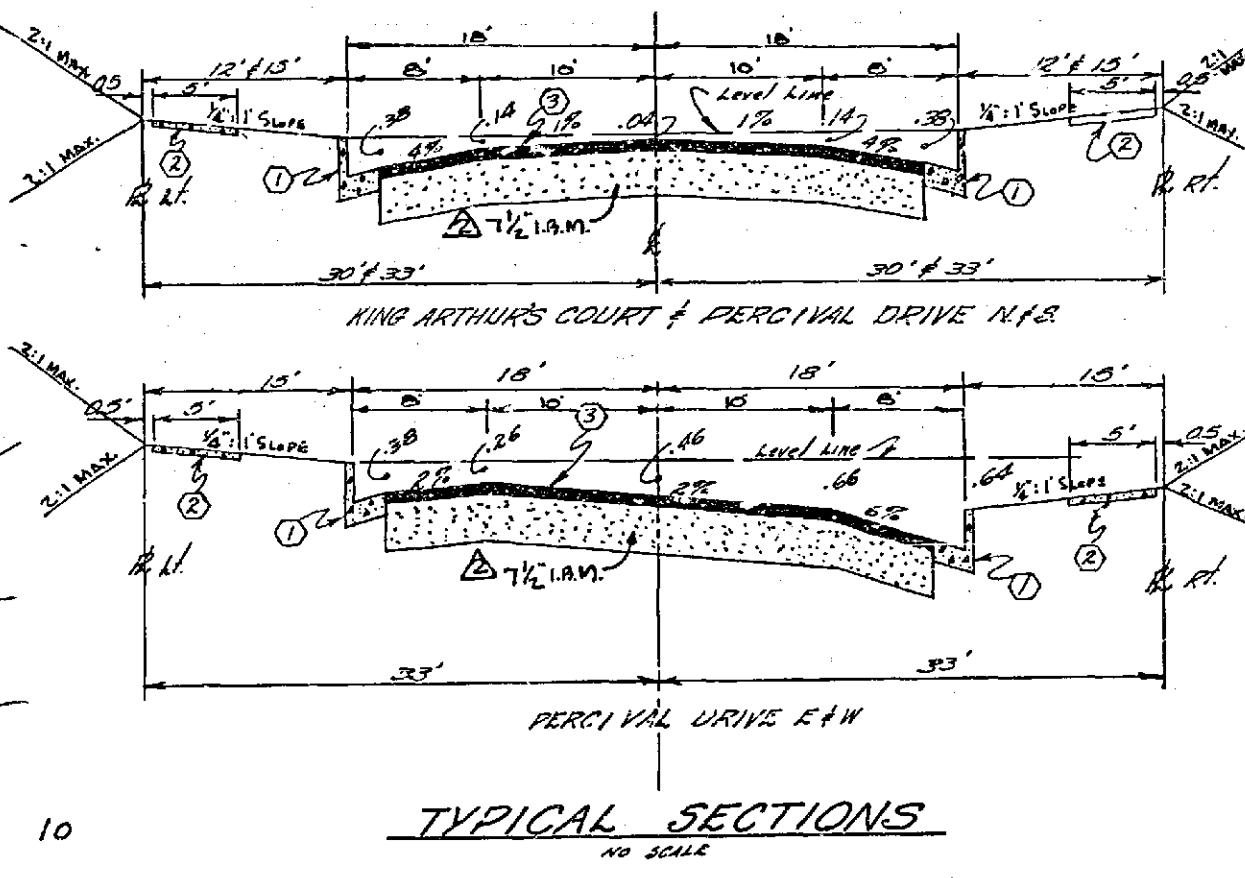


No.	R	Δ	T	L
①	27	37° 51' 49"	826	178.84
②	30	255° 43' 38"	-	133.90
③	30	37° 20' 58"	10.14	19.26
④	35	98° 14' 17"	40.19	62.32
⑤	30	173° 31' 16"	-	20.21
⑥	30	36° 52' 12"	10.00	19.31
⑦	27	30° 00' 00"	27.00	42.61

Scale: 1" = 50'



Scale: 1" = 50'



TYPICAL SECTIONS
 NO SCALE

- CONSTRUCTION NOTES:
- ① Const. Curb & gutter 30" W x 200 (6" CF)
 - ② Const. Sidewalk 30" W x 300
 - ③ Const. 2" A.C. with Sealcoat exp. 7 1/2" D.M.
 - ④ Const. Cross gutter aprons 30" W x 2" D.
 - ⑤ Const. Barriercast 24" W x 180

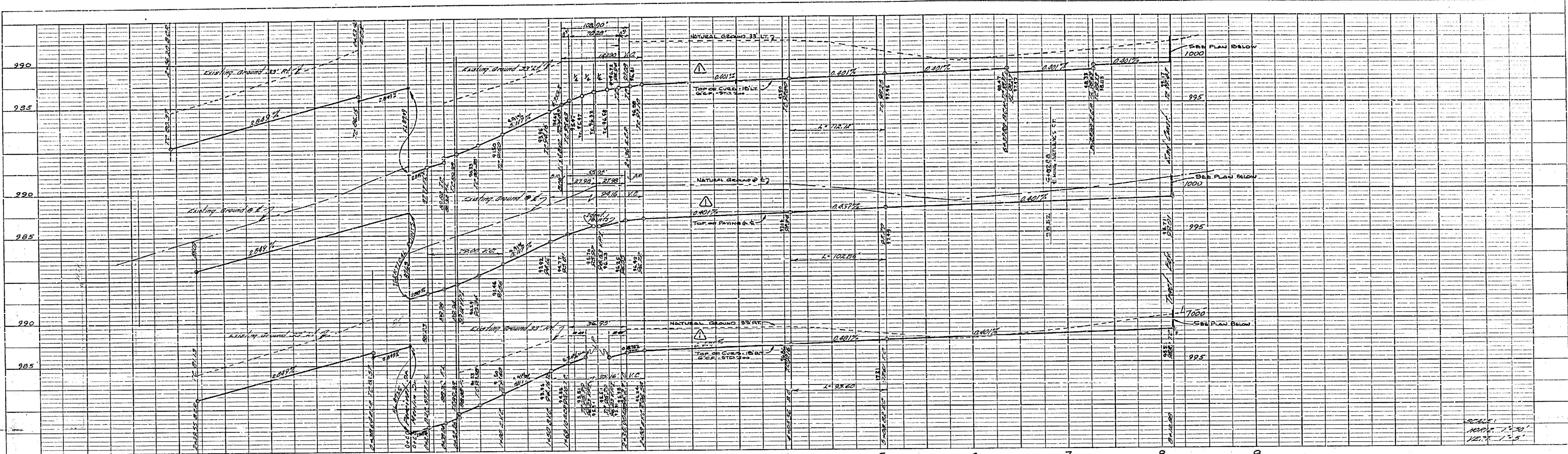
REVISION		
MARK	DATE	DESCRIPTION
Δ	6-24-64	LOWERS STREET GRADE TO FIN.
Δ	9-29-64	FROM 187 TO 188.5' PER PLAN ADDED 18.11' ELEV. TO 187.5'

ALBERT A. WEBB ASSOCIATES
 CIVIL ENGINEERS - RIVERSIDE, CALIFORNIA
 APPROVED: *[Signature]* DATE 7/24/63
 CITY OF RIVERSIDE, CALIFORNIA
 DEPARTMENT OF PUBLIC WORKS
TRACT No. 2553
 STREET PLAN & PROFILE
PERCIVAL DRIVE
KING ARTHUR'S COURT

DATE JUN 1963	SCALE As Shown	APPROVED BY <i>[Signature]</i>
DRAWN daw	W.O. 63-27	DIRECTOR OF PUBLIC WORKS
CHECKED <i>[Signature]</i>	F.B. 439	DATE 7-30-63

NO. R-727
 SHEET 6 OF 6

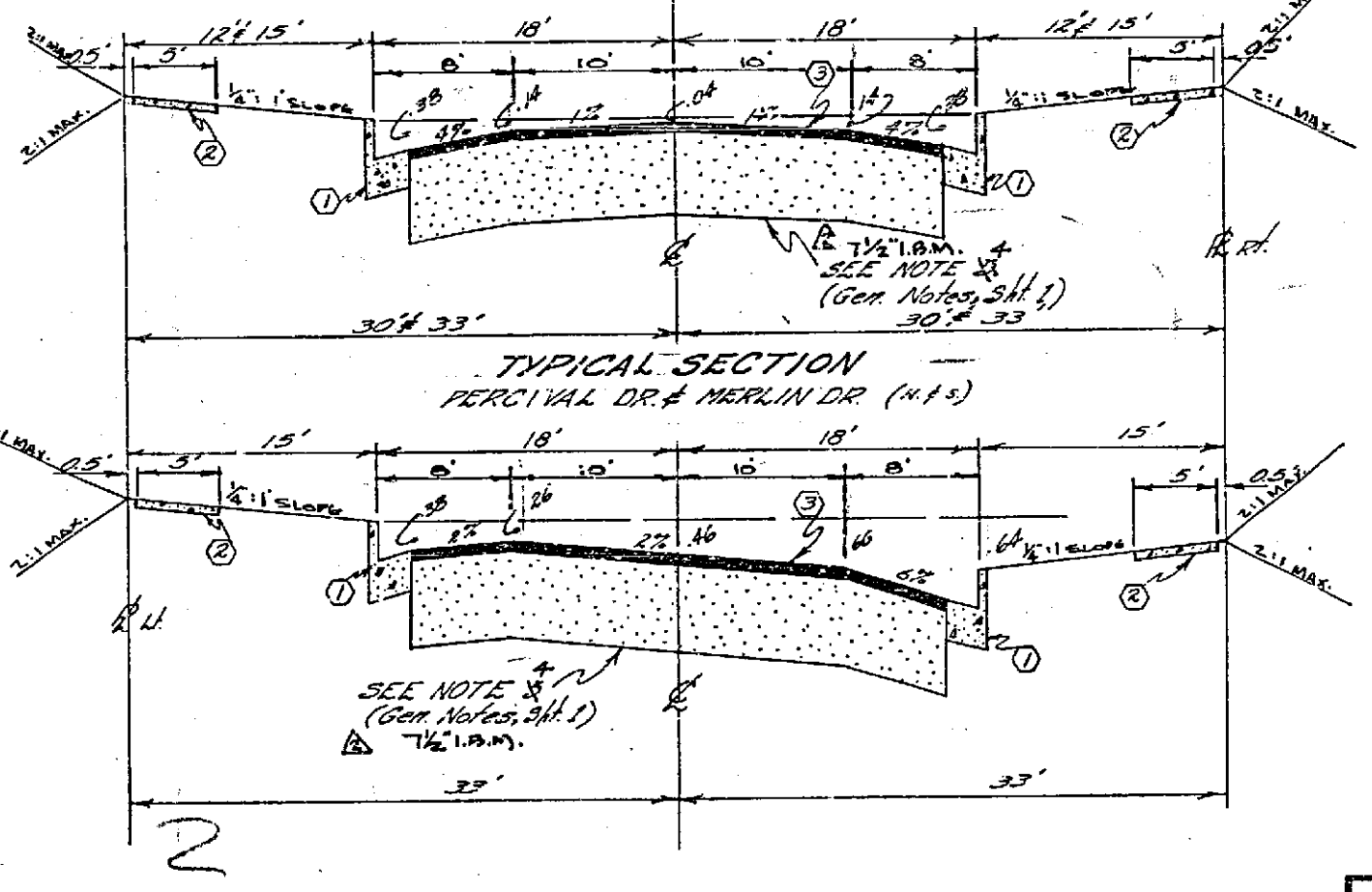
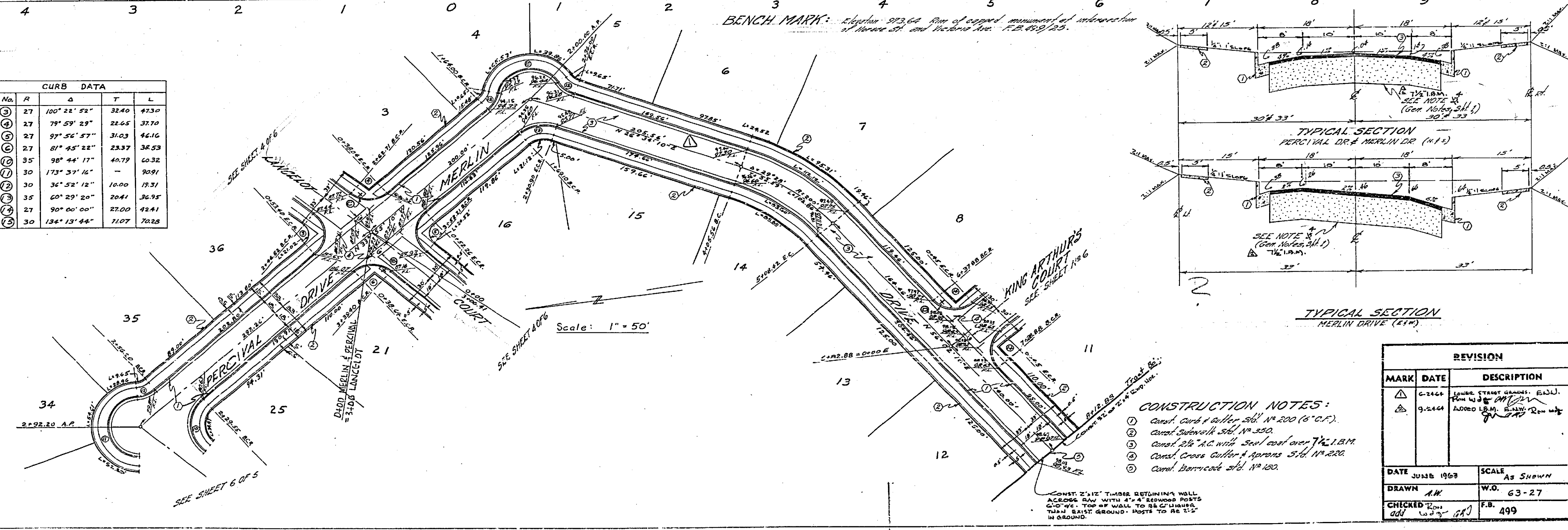
PLAN	NO.	DATE	BY	DATE



PROFILE	SHEET NO.	NO. 1000
	DATE	7/24/62
	BY	ALBERT A. WEBB
	CHECKED	ADD
	DATE	7/24/62

PLAN	SHEET NO.	NO. 1000
	DATE	7/24/62
	BY	ALBERT A. WEBB
	CHECKED	ADD
	DATE	7/24/62

No.	R	A	T	L
1	27	100° 22' 52"	32.40	47.30
2	27	79° 59' 29"	22.65	37.70
3	27	97° 56' 57"	31.03	46.16
4	27	81° 45' 22"	23.37	36.53
5	35	98° 44' 17"	40.79	60.32
6	30	173° 37' 16"	-	90.91
7	30	36° 52' 12"	10.00	17.31
8	35	60° 29' 20"	20.41	36.95
9	27	90° 00' 00"	27.00	43.41
10	30	134° 13' 44"	71.07	70.22



MARK	DATE	DESCRIPTION
Δ	6-24-62	LOWER STREET GRADES: E.I.J.U. FROM W.D. 63-27
⊕	9-24-61	ADDED I.B.M. BENCH MARK FROM W.D. 63-27

ALBERT A. WEBB ASSOCIATES
 CIVIL ENGINEERS - RIVERSIDE, CALIFORNIA
 APPROVED: *Albert A. Webb* DATE 7/24/62

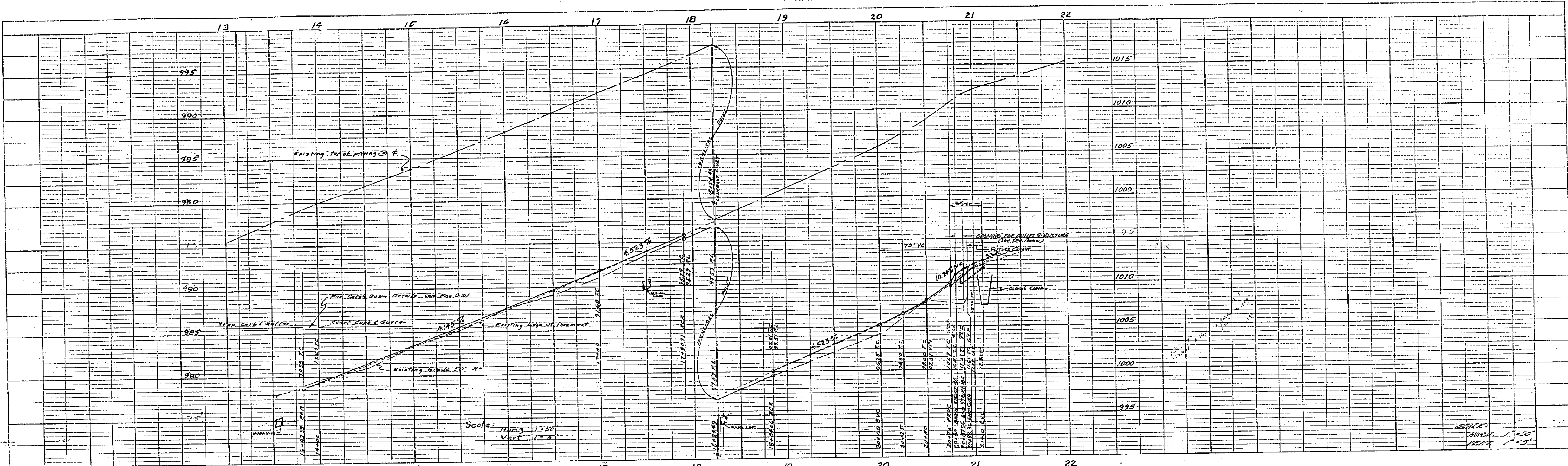
CITY OF RIVERSIDE, CALIFORNIA
 DEPARTMENT OF PUBLIC WORKS

TRACT No. 2553

STREET PLAN & PROFILE
 PERCIVAL DRIVE
 MERLIN DRIVE

DATE JUNE 1962 SCALE As Shown
 DRAWN A.M. W.D. 63-27
 CHECKED *ADD* W.D. 63-27 F.B. 499

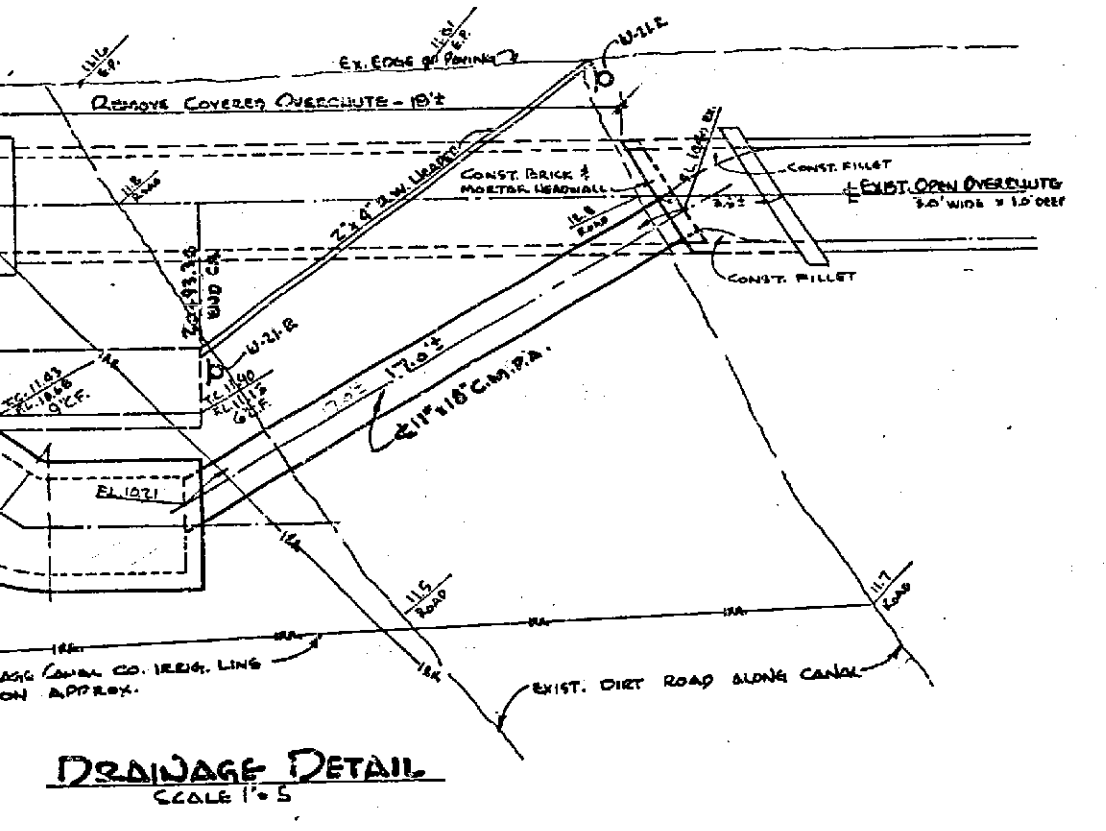
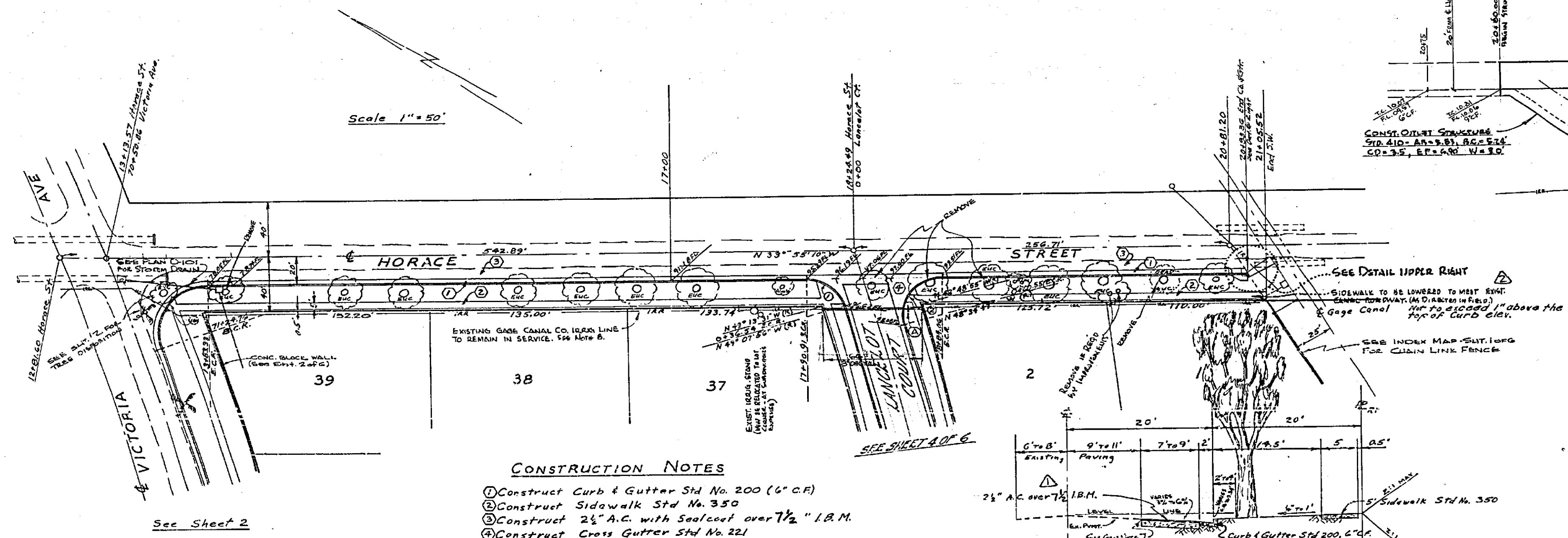
APPROVED BY: *ADD*
 DIRECTOR OF PUBLIC WORKS
 DATE 7-30-63 SHEET 5 OF 6



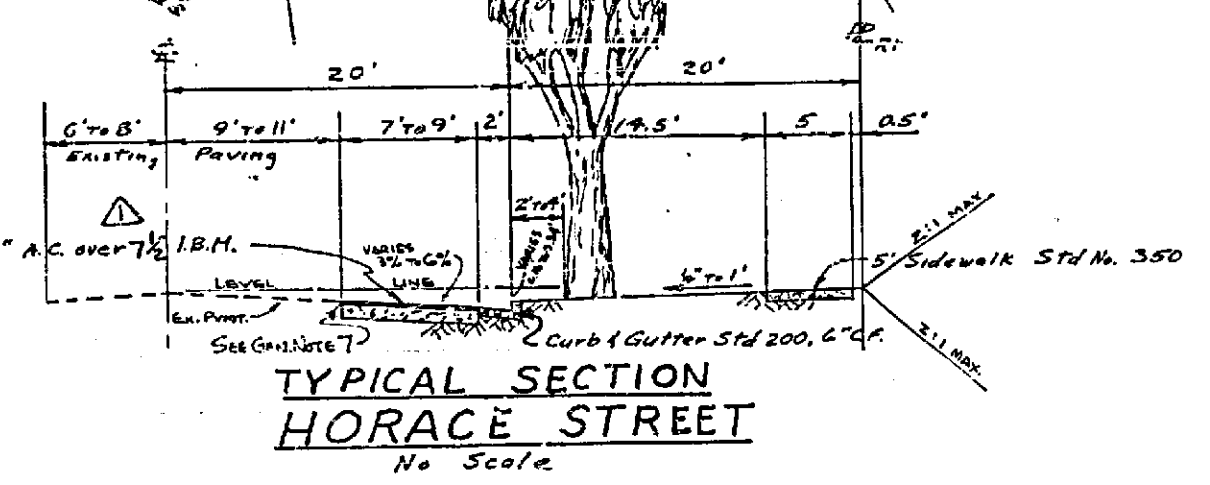
PROFILE	SUBMITTED	DATE
PLAN	APPROVED	DATE
DATE		

BENCH MARK: ELEV 973.64 Rim of capped monument of intersection of Horace St and Victoria Ave R.B. 499/25

No.	R	A	T	L
1	27	74° 47' 14"	20.64	35.24
2	27	104° 39' 37"	39.97	49.32
3	35	107° 29' 04"	48.16	65.96

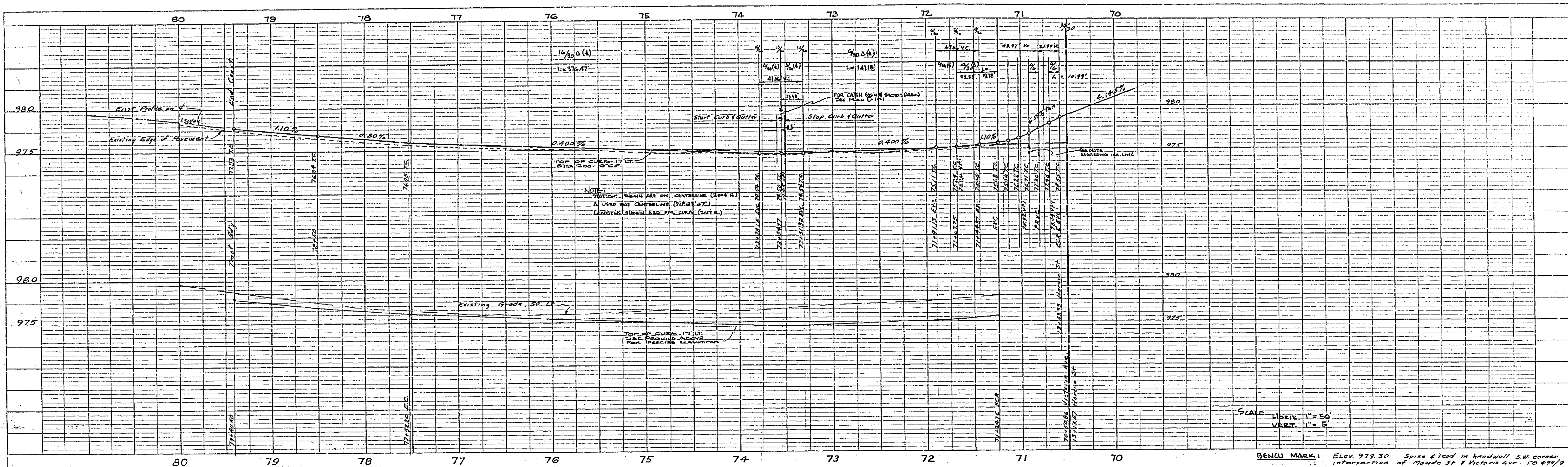


- CONSTRUCTION NOTES**
- Construct Curb & Gutter Std No. 200 (6" C.R.)
 - Construct Sidewalk Std No. 350
 - Construct 2 1/2" A.C. with Sealcoat over 1 1/2" I.B.M.
 - Construct Cross Gutter Std No. 221



APPROVED BY <i>[Signature]</i> DATE: <i>Sept. 18, 1963</i>	ALBERT A. WEBB ASSOCIATES CIVIL ENGINEERS - RIVERSIDE, CALIFORNIA APPROVED: <i>[Signature]</i> DATE: <i>7/20/63</i>	
REVISION		
MARK	DATE	DESCRIPTION
Δ	7-24-63	Added I.B.M. E.M.V.
Δ	8-2-64	Added Note re: Lowering Sidewalk to B.C. wdg. <i>[Signature]</i>
DATE: July, 1963	SCALE: As Shown	APPROVED BY <i>[Signature]</i> DIRECTOR OF PUBLIC WORKS
DRAWN: AW	W.D. 63-27	NO. R-727
CHECKED: <i>[Signature]</i>	F.B.	DATE: 9-30-63
		SHEET 3 OF 6

PLAN	SUBMITTED	DATE
PROFILE	APPROVED	DATE
DATE		

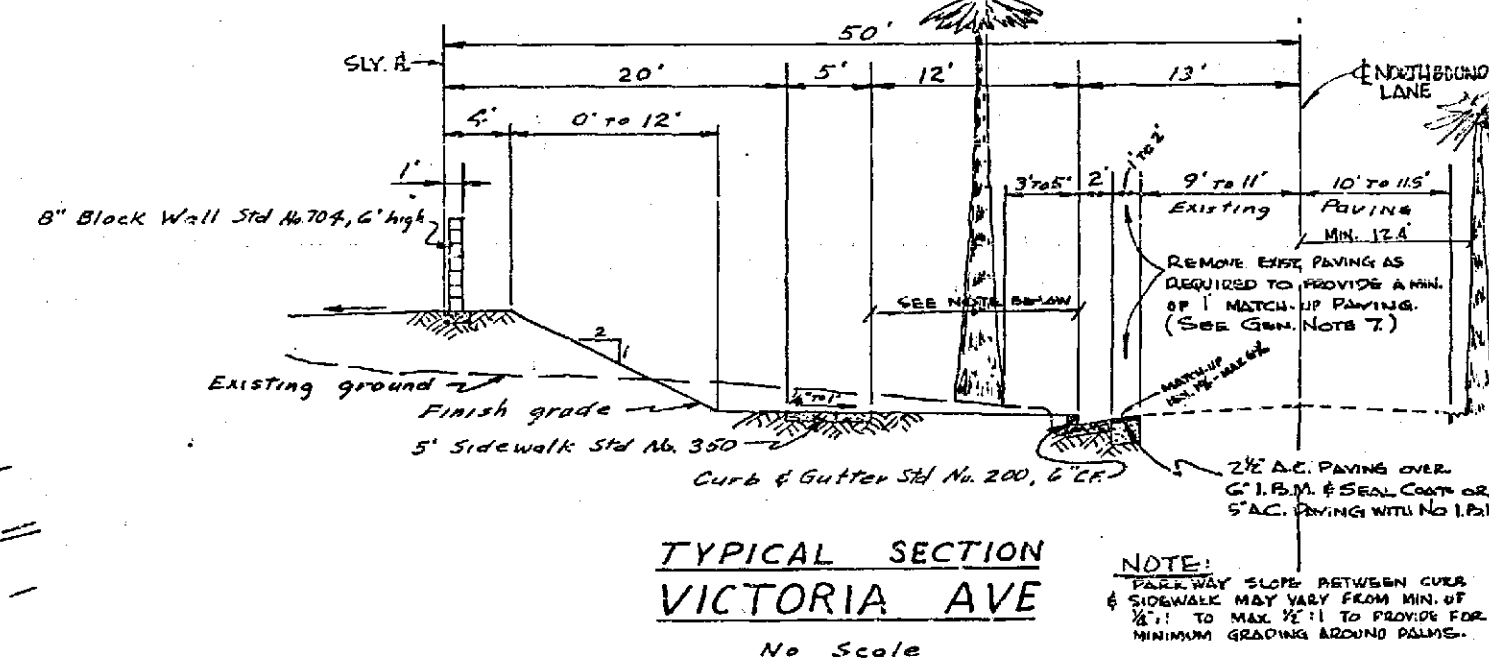
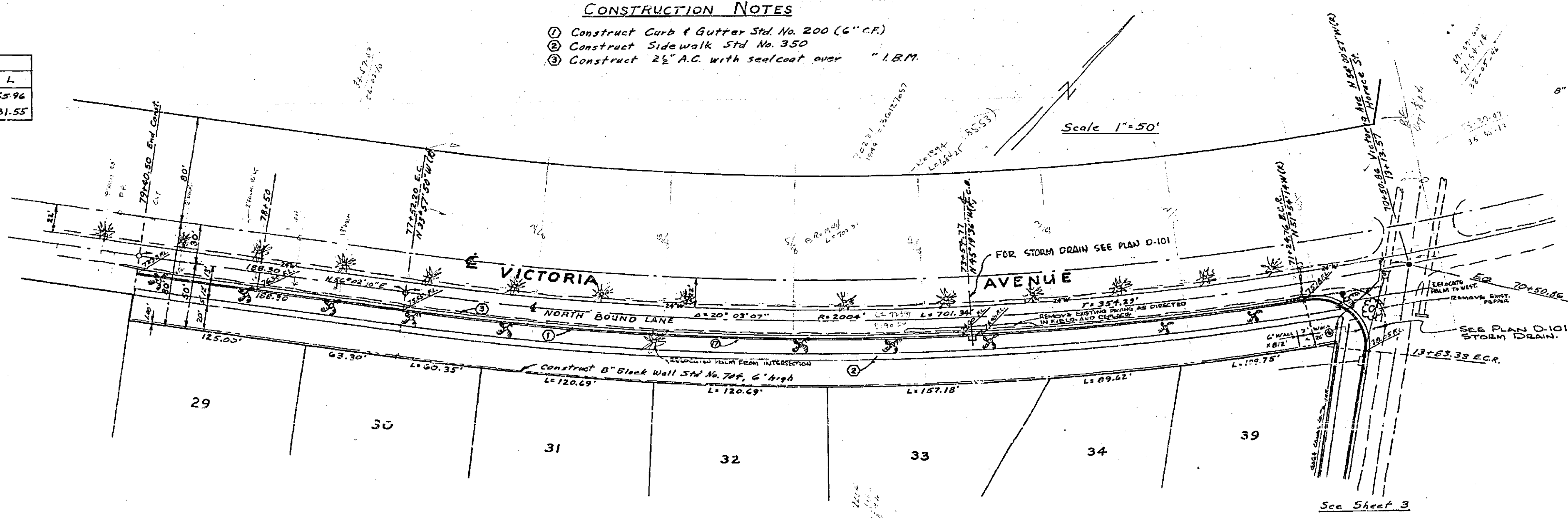


PROFILE	SUBMITTED
NO. 1	DATE 7/26/63
BY	ALBERT A. WEBB ASSOCIATES
FOR	CITY OF RIVERSIDE, CALIF.

CURB DATA				
No.	R	A	T	L
1	35'	107° 29' 04"	48.14	65.96
2	2017	17° 54' 24"	918.38	631.55

CONSTRUCTION NOTES

- 1 Construct Curb & Gutter Std. No. 200 (6" C.F.)
- 2 Construct Sidewalk Std. No. 350
- 3 Construct 2 1/2" A.C. with sealcoat over 1" I.B.M.



PLAN	SUBMITTED
NO. 1	DATE 7/26/63
BY	ALBERT A. WEBB ASSOCIATES
FOR	CITY OF RIVERSIDE, CALIF.

APPROVED BY <i>[Signature]</i> DATE 9-23-63	ALBERT A. WEBB ASSOCIATES CIVIL ENGINEERS - RIVERSIDE, CALIFORNIA APPROVED <i>[Signature]</i> DATE 7/26/63
REVISION	CITY OF RIVERSIDE, CALIFORNIA DEPARTMENT OF PUBLIC WORKS
MARK DATE DESCRIPTION	TRACT No. 2553
	STREET PLAN & PROFILE VICTORIA AVENUE
DATE JUNE 1963	SCALE As Shown
DRAWN AW 63-27	APPROVED BY <i>[Signature]</i> DIRECTOR OF PUBLIC WORKS
CHECKED 63-27	NO. R-727
	DATE 9-30-63 SHEET 2 OF 6

