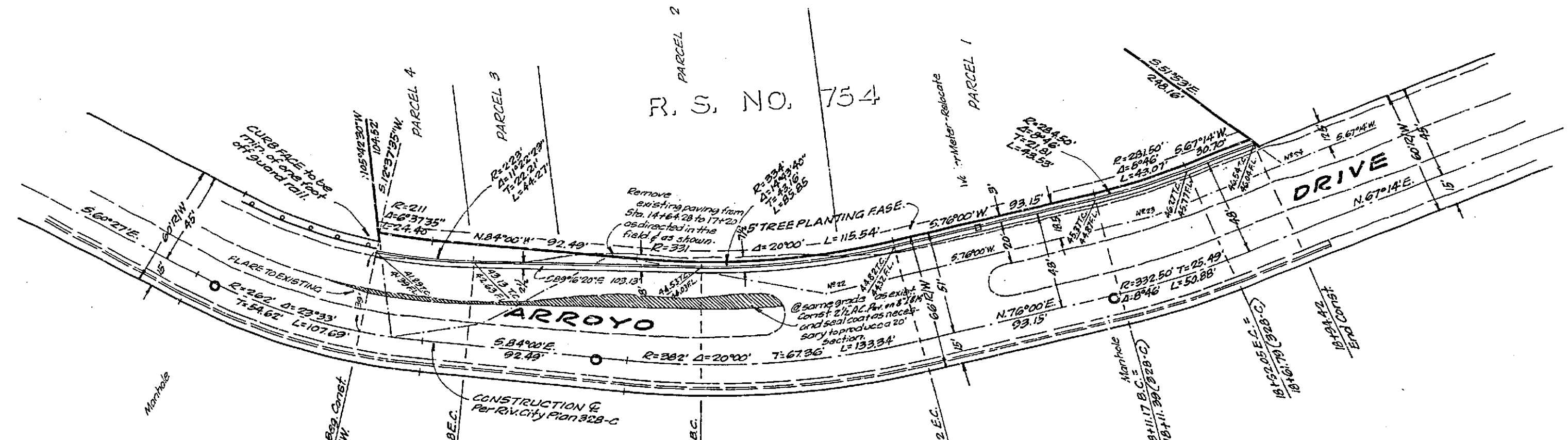
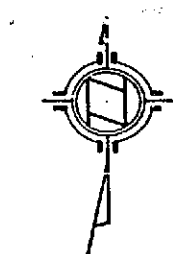


- GENERAL NOTES**
1. All construction shall be in accordance with Standards and Specifications No. 463 of the City of Riverside Department of Public Works.
  2. It shall be the responsibility of the Contractor to clear the Right of Way in accordance with the provisions of law as it affects each utility, including irrigation lines and appurtenances, and at no extra cost to the City of Riverside.
  3. Prima Coat and Point Binder are required.



APPROVED: DATE 8-16-63  
 By *Edna D. Bunker*  
 Park Superintendent

BENCHMARK: C.R. Spide in power pole No. 8073, 100' S. Ely of Sedgwick Ave. Elev. 263.77 T.B.M.: "0" top of N.E. corner of catch basin at Sta. 19+07.49. Elev. 946.93.		<b>J. F. DAVIDSON - CIVIL ENGINEER</b> R.E. NO. 862 RIVERSIDE, CALIFORNIA APPROVED BY <i>George E. McLean</i> DATE 7/19/63 R. 10525	
<b>REVISIONS</b>			
MARK	DATE	DESCRIPTION	
Ⓟ	11/4/63	Revised 1% grade between Sta. 16148.00 and 1775. 92 ft. W.D. Bell	
Ⓛ	12/1/63	Revised 1% grade between Sta. 15150 and 18450. 92 ft. W.D. Bell	
DESIGNED BY		CHECKED BY <i>Ron W. Bell</i>	
DRAWN BY		RECOMMENDED BY <i>Edna D. Bunker</i> ASSISTANT CITY ENGINEER	
CITY OF RIVERSIDE, CALIFORNIA DEPARTMENT OF PUBLIC WORKS		STREET PLAN & PROFILE <b>ARROYO DRIVE</b> R. S. NO. 754 - W.D. BELL HORIZ. SCALE 1" = 40' VERT. SCALE 1" = 4' APPROVED BY <i>George E. McLean</i> Director of Public Works DATE 8/29/63 SHEET 1 OF 1 NO. R-728	

