

PROFILE

DATE	
DRAWN BY	
CHECKED BY	
DESIGNED BY	
APPROVED BY	

PLAN

DATE	
DRAWN BY	
CHECKED BY	
DESIGNED BY	
APPROVED BY	

REVISIONS		
MARK	DATE	DESCRIPTION

CITY OF RIVERSIDE, CALIFORNIA
 DEPARTMENT OF PUBLIC WORKS

STREETER AVENUE & CENTRAL AVENUE BETWEEN CENTRAL AVE. & DEWEY AVE.

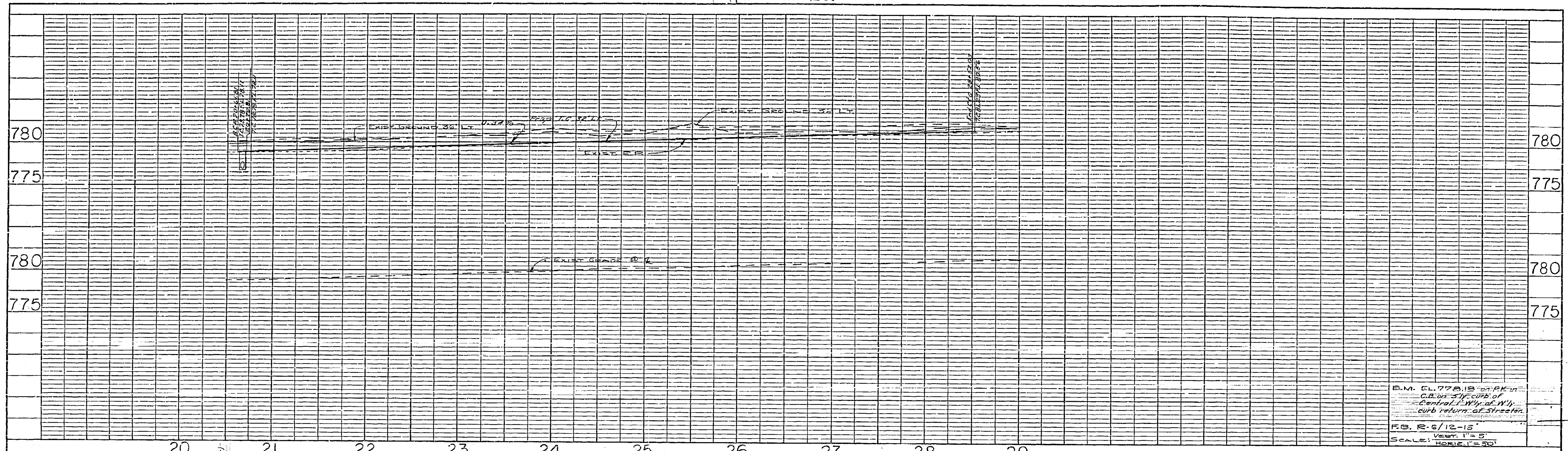
DESIGNED BY: CAP
 DRAWN BY: A.W.
 CHECKED BY: [Signature]

SUBMITTED BY: [Signature]
 PARK DEPT. [Signature]
 RECOMMENDED BY: [Signature]

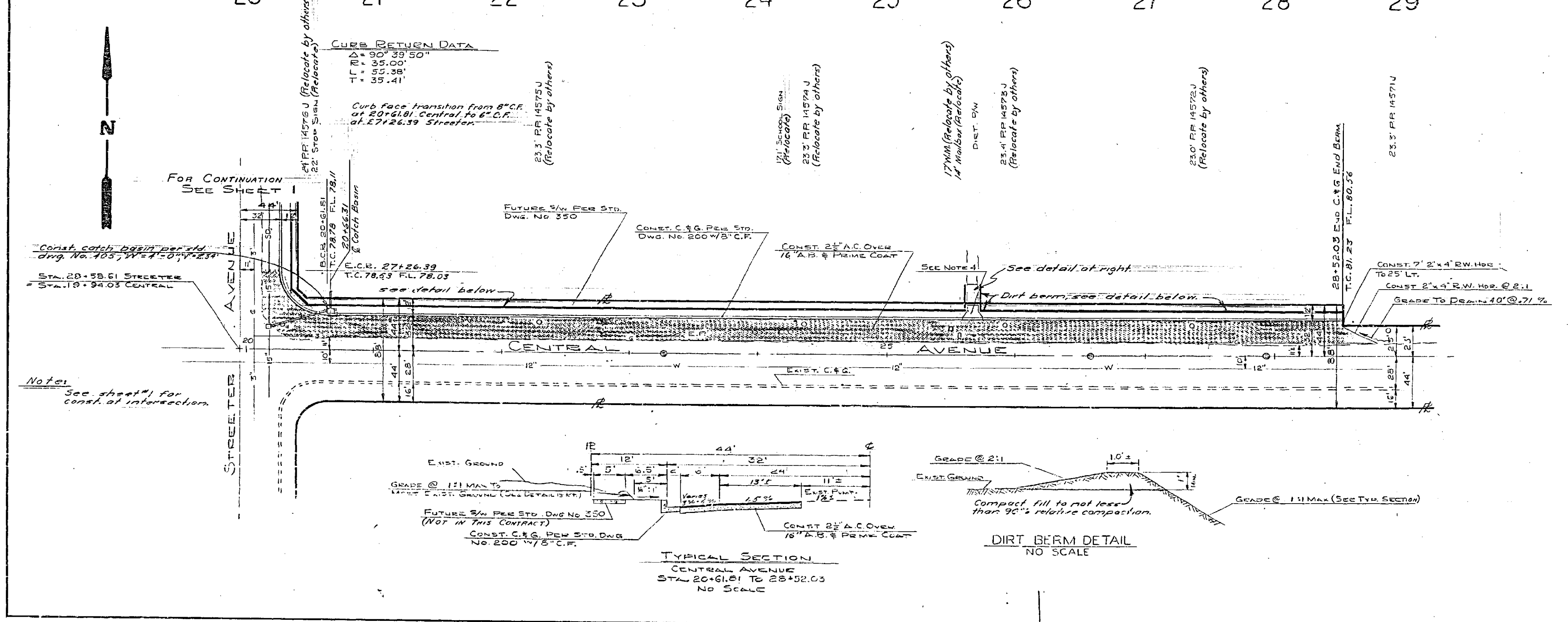
APPROVED BY: [Signature]
 DIRECTOR OF PUBLIC WORKS

DATE: 5-19-64

PROJ. NO. 3024
 R-729
 SHEET 1 OF 2



PROJECT	STREETER AVENUE
DATE	5-17-64
SCALE	1" = 5'
BY	...
CHECKED	...
APPROVED	...



NOTES

1. ALL CONSTRUCTION SHALL BE IN ACCORDANCE WITH STANDARDS AND SPECIFICATIONS NO. 461 OF THE CITY OF RIVERSIDE, DEPARTMENT OF PUBLIC WORKS.
2. TOP EDGE OF PAVING TO CLEAN STRAIGHT LINE. CONSTRUCT MATCH UP PAVING AS SHOWN AND OVERLAY EXISTING PAVING AS DIRECTED IN THE FIELD TO PRODUCE A SMOOTH CROWN SECTION.
3. IT SHALL BE THE RESPONSIBILITY OF THE CONTRACTOR TO CLEAR THE RIGHT OF WAY IN ACCORDANCE WITH THE PROVISIONS OF THE LAW AS IT AFFECTS EACH UTILITY, INCLUDING IRRIGATION LINES AND APPURTENANCES, AND AT NO COST TO THE CITY.
4. CONSTRUCT DRIVEWAY APPROACH PER STANDARD DRAWING NO. 302. LOCATION TO BE DETERMINED IN THE FIELD. "A" & "B" = 17'
5. PRIME COAT AND PAINT BINDER ARE REQUIRED.

DRIVEWAY PROFILES
 CENTRAL & STREETER
 NO SCALE

PLAN	STREETER AVENUE
DATE	5-17-64
SCALE	1" = 5'
BY	...
CHECKED	...
APPROVED	...

REVISIONS		CITY OF RIVERSIDE, CALIFORNIA DEPARTMENT OF PUBLIC WORKS	
MARK	DATE		
		STREETER AVENUE & CENTRAL AVENUE CENTRAL AVE. FROM STREETER AVE. TO 900' E'LY	
DESIGNED BY	GAZ	APPROVED BY	PROJ. NO. 3024
DRAWN BY	...	TRAFFIC DIV.	R-729
CHECKED BY	...	DATE	5-17-64
			SHEET 2 OF 2