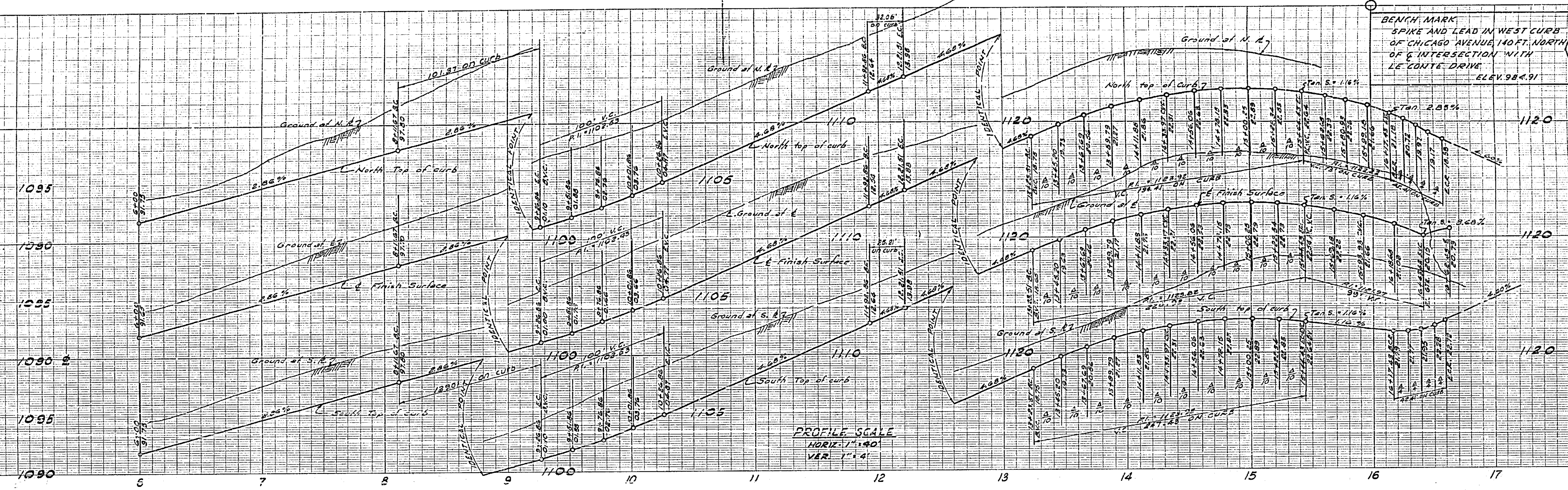


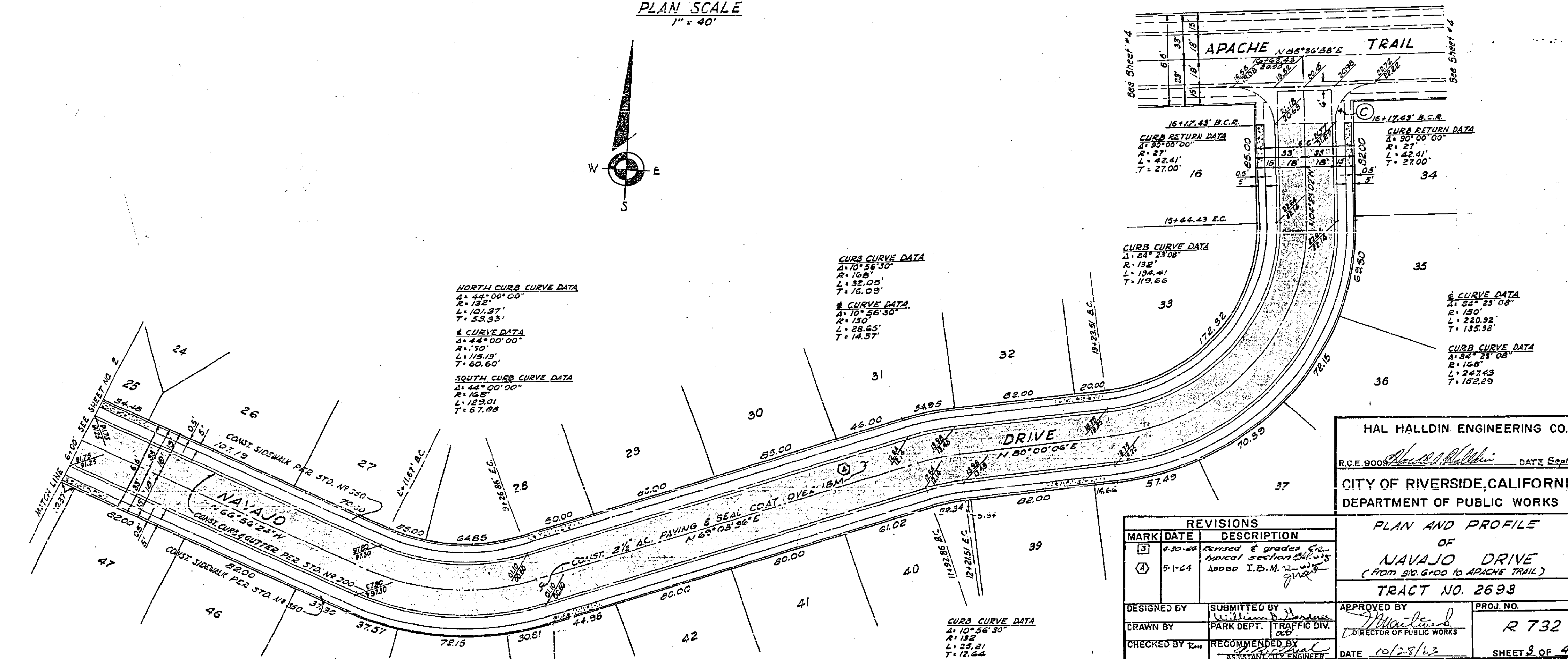
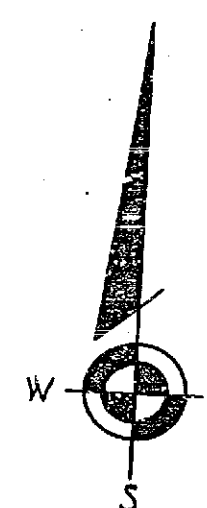
SCALE OF 1" = 40'
 HORIZONTAL SCALE
 VERTICAL SCALE

SCALE OF 1" = 40'
 HORIZONTAL SCALE
 VERTICAL SCALE



PROFILE SCALE
 HORIZ. 1" = 40'
 VER. 1" = 4'

PLAN SCALE
 1" = 40'



NORTH CURB CURVE DATA
 Δ: 44° 00' 00"
 R: 108'
 L: 101.37'
 T: 53.33'

Δ CURVE DATA
 Δ: 44° 00' 00"
 R: 150'
 L: 118.18'
 T: 60.60'

SOUTH CURB CURVE DATA
 Δ: 44° 00' 00"
 R: 108'
 L: 123.01'
 T: 67.68'

CURB CURVE DATA
 Δ: 10° 56' 30"
 R: 108'
 L: 32.05'
 T: 16.09'

Δ CURVE DATA
 Δ: 10° 56' 30"
 R: 150'
 L: 28.65'
 T: 14.37'

CURB RETURN DATA
 Δ: 30° 00' 00"
 R: 27'
 L: 42.41'
 T: 27.00'

CURB RETURN DATA
 Δ: 30° 00' 00"
 R: 27'
 L: 42.41'
 T: 27.00'

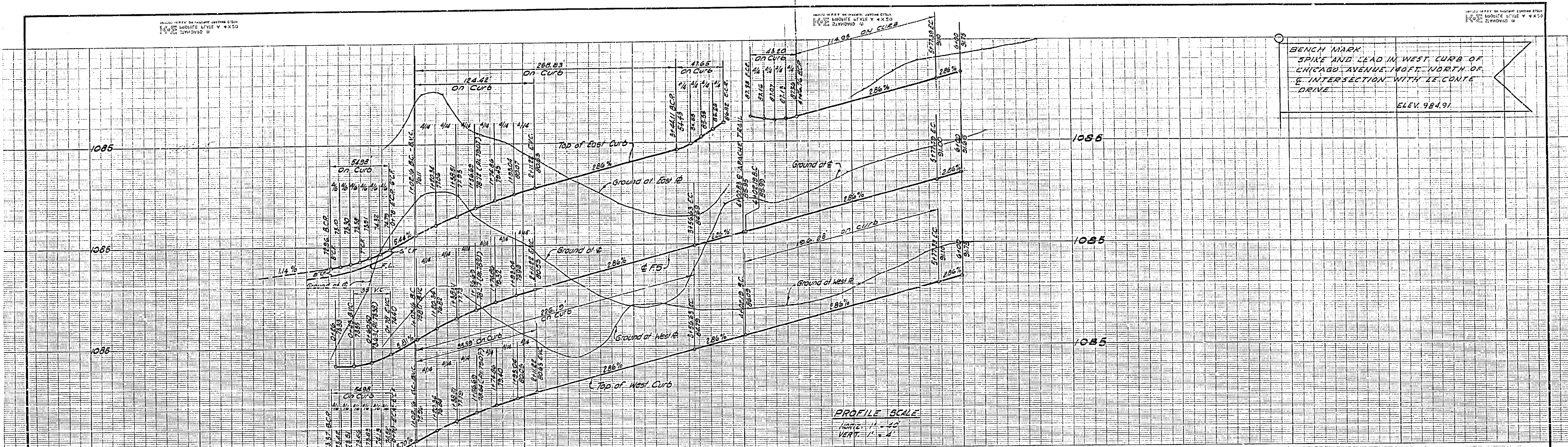
HAL HALLDIN ENGINEERING CO.
 R.C.E. 9000
 DATE Sept. 3, 1963
 CITY OF RIVERSIDE, CALIFORNIA
 DEPARTMENT OF PUBLIC WORKS

MARK	DATE	DESCRIPTION
3	4-30-63	Revised & grades
4	5-1-64	Added I.B.M. 2nd

PLAN AND PROFILE
 OF
NAVAJO DRIVE
 (FROM S.T.C. 6000 TO APACHE TRAIL)
 TRACT NO. 2593

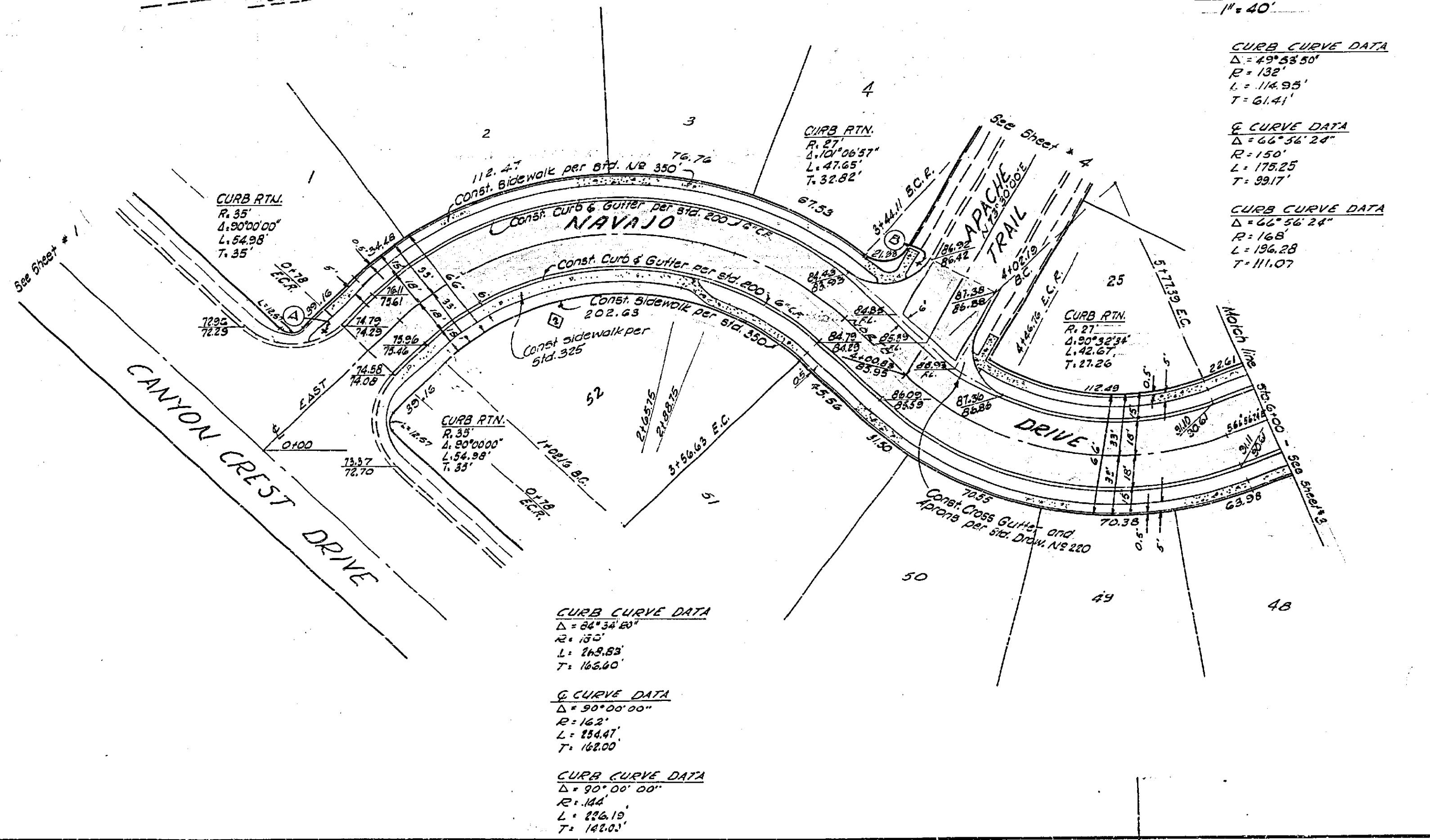
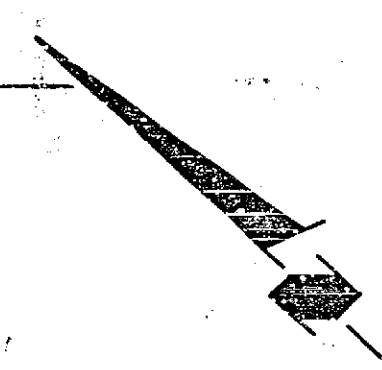
DESIGNED BY: [Signature]
 SUBMITTED BY: [Signature]
 CHECKED BY: [Signature]

APPROVED BY: [Signature]
 PROJ. NO. R 732
 DATE 10/28/63
 SHEET 3 OF 4



PROFILE SCALE
 HORIZ. 1" = 40'
 VERT. 1" = 4'

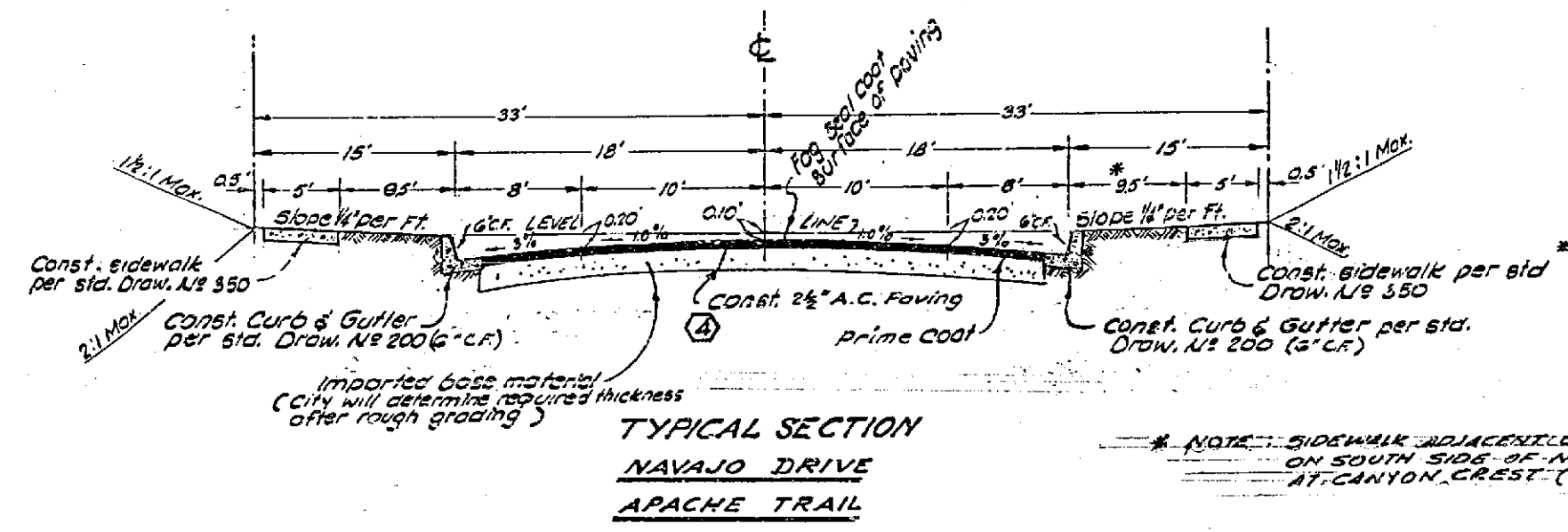
PLAN SCALE
 1" = 40'



CURB CURVE DATA
 $\Delta = 49^{\circ}58'50''$
 $R = 132'$
 $L = 114.95'$
 $T = 61.41'$

G CURVE DATA
 $\Delta = 66^{\circ}54'24''$
 $R = 150'$
 $L = 178.25'$
 $T = 99.17'$

CURB CURVE DATA
 $\Delta = 66^{\circ}54'24''$
 $R = 168'$
 $L = 196.28'$
 $T = 111.07'$



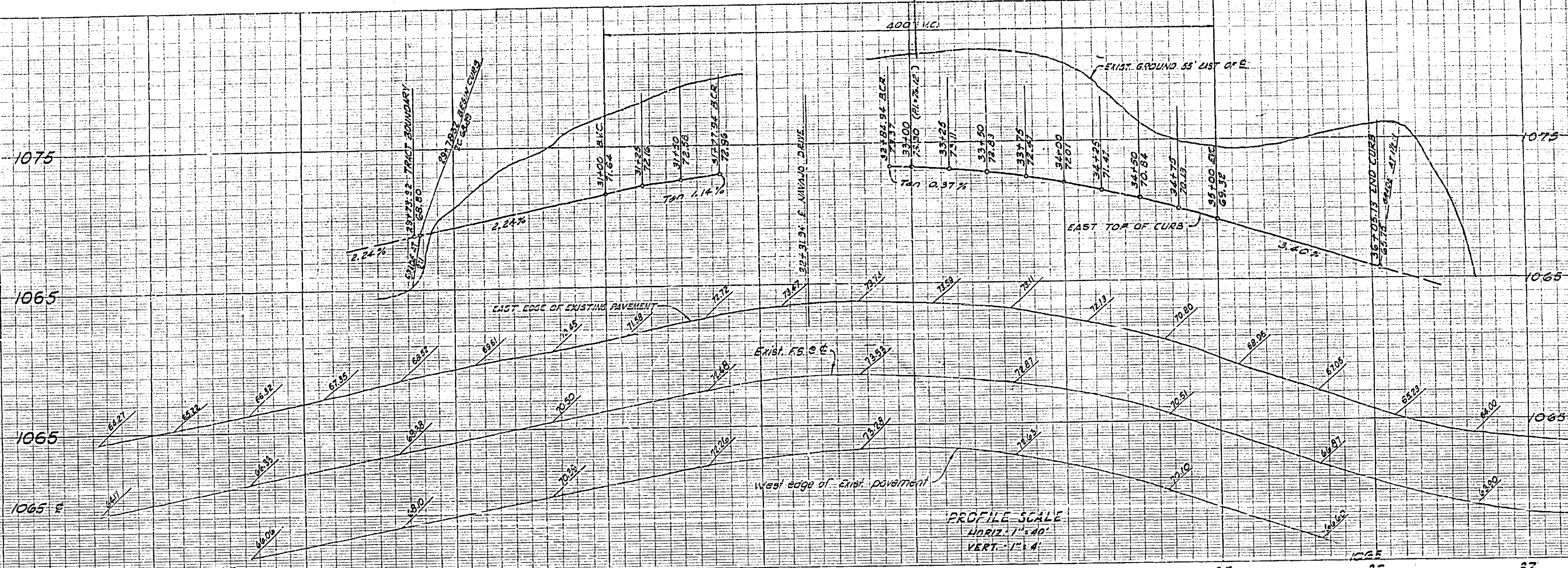
TYPICAL SECTION
 NAVAJO DRIVE
 APACHE TRAIL

NOTE: SIDEWALKS ADJACENT TO CURBS ON SOUTH SIDE OF NAVAJO DRIVE AT CANYON CREST (SEE PLAN)

NAVAJO DRIVE
 0+00 TO 3+00 7" I.B.M. REQUIRED
 3+00 TO 15+00 8" I.B.M. REQUIRED
 APACHE TRAIL
 ENTIRE STREET 7" I.B.M. REQUIRED

HAL HALLDIN ENGINEERING CO.		DATE <u>SEPT. 3, 1963</u>	
R.C.E. 9009 <i>Edward A. Hallidin</i>		CITY OF RIVERSIDE, CALIFORNIA	
REVISIONS		DEPARTMENT OF PUBLIC WORKS	
MARK	DATE	DESCRIPTION	PLAN AND PROFILE OF NAVAJO DRIVE FROM STA. 0+00 TO 6+00
①	4-27-64	Revised sidewalk location on South side of Navajo Drive at Canyon Crest	TRACT NO. 2693
②	4-30-64	Revised & correct & transfer sections 50-51	
③	5-1-64	Added I.B.M. locations	
DESIGNED BY	SUBMITTED BY	APPROVED BY	PROJ. NO.
DRAWN BY	PARK DEPT. TRAFFIC DIV.	<i>Hal Hallidin</i>	R 732
CHECKED BY	RECOMMENDED BY	DATE	SHEET 2 OF 4
		10/25/63	

BENCH MARK
SPIKE AND LEAD IN WEST CURB
OF CHICAGO AVENUE 140 FT
NORTH OF E. INTERSECTION WITH
LE CONTE DRIVE
ELEV. 994.91

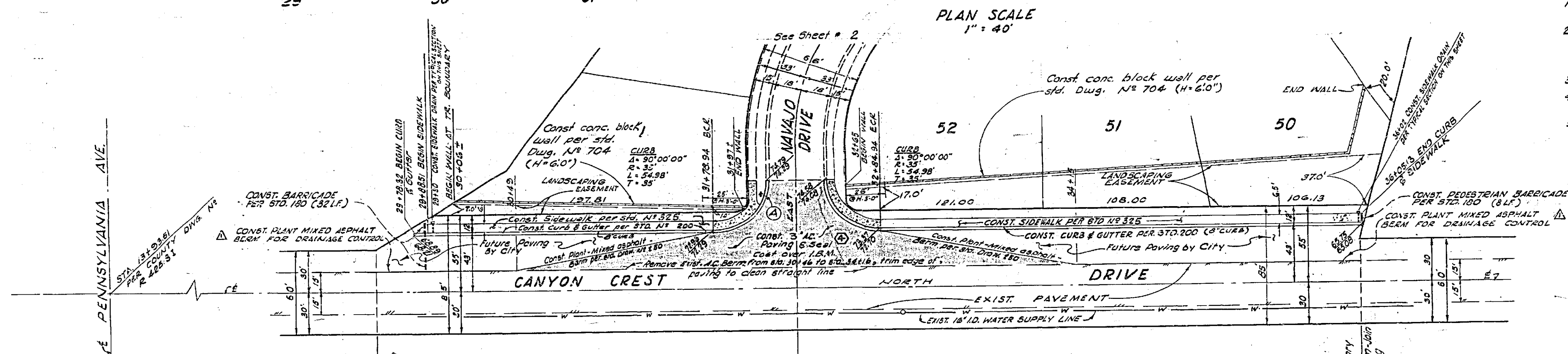


ESTIMATE OF QUANTITIES

AC Berm	380 L.F.
Barricade (3 each)	76 L.F.
Curb & Gutter (6' CR)	528 L.F.
Curb & Gutter (6' CR)	4,900 L.F.
Curb Return with Gutter	110 L.F.
Curb Return without Gutter	176 L.F.
Sidewalk	1,932 L.F.
Paving	91,528 S.F.
Sub Base	91,528 S.F.
Cross-Gutter (2 each)	1,632 S.F.
2"x 8" END Header	32 L.F.
conc. block wall (Free standing H=6.0')	3,300 S.F.
	(575) L.F.

GENERAL NOTES

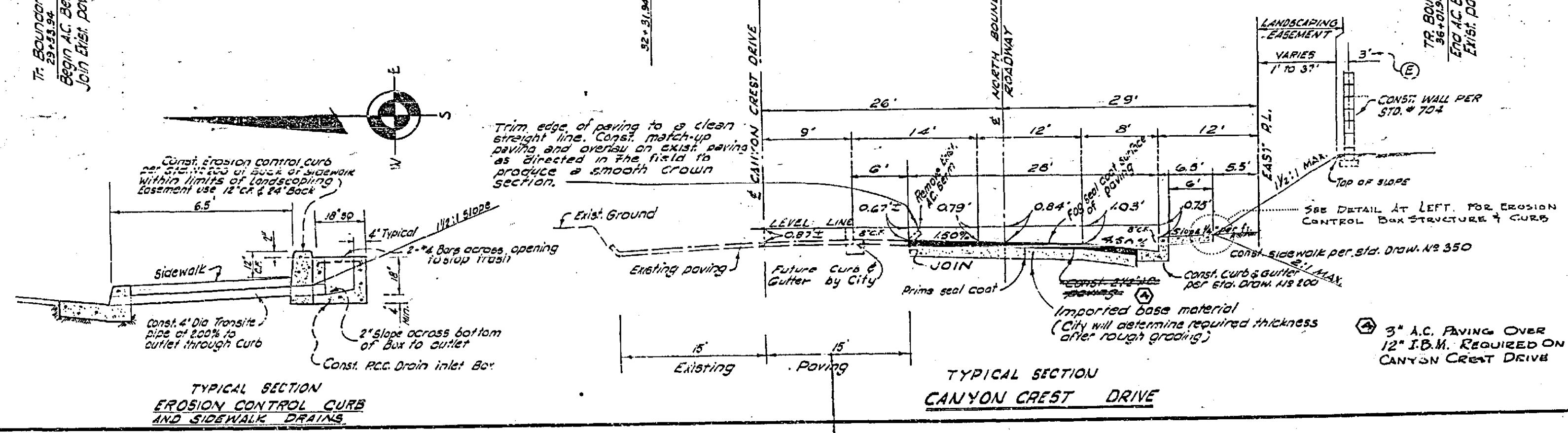
- All construction shall be in accordance with Standards and Specifications N-441 of the City of Riverside, Department of Public Works.
- It shall be the responsibility of the contractor to clear the right of way in accordance with the provisions of the law as it affects each utility, including irrigation lines and appurtenances, and at no cost to the City.
- Prime coat, paint binder, and seal coat will be required.
- The City of Riverside will take soil tests to determine the thickness of the imported base material after streets are rough graded.
- Street name signs & posts are to be furnished and installed by the developer in accordance with City Std. Dwg. No. 662.



STREET NAME SIGN SCHEDULE

LOCATION	NAME	NUMBER
A	CANYON CREST DRIVE	AT00
B	NAVAJO DRIVE	500
C	APACHE TRAIL	500
	NAVAJO DRIVE	700
	APACHE TRAIL	700

See general note no 5 - Contractor to contact City Traffic Engineer prior to ordering signs for street numbers.



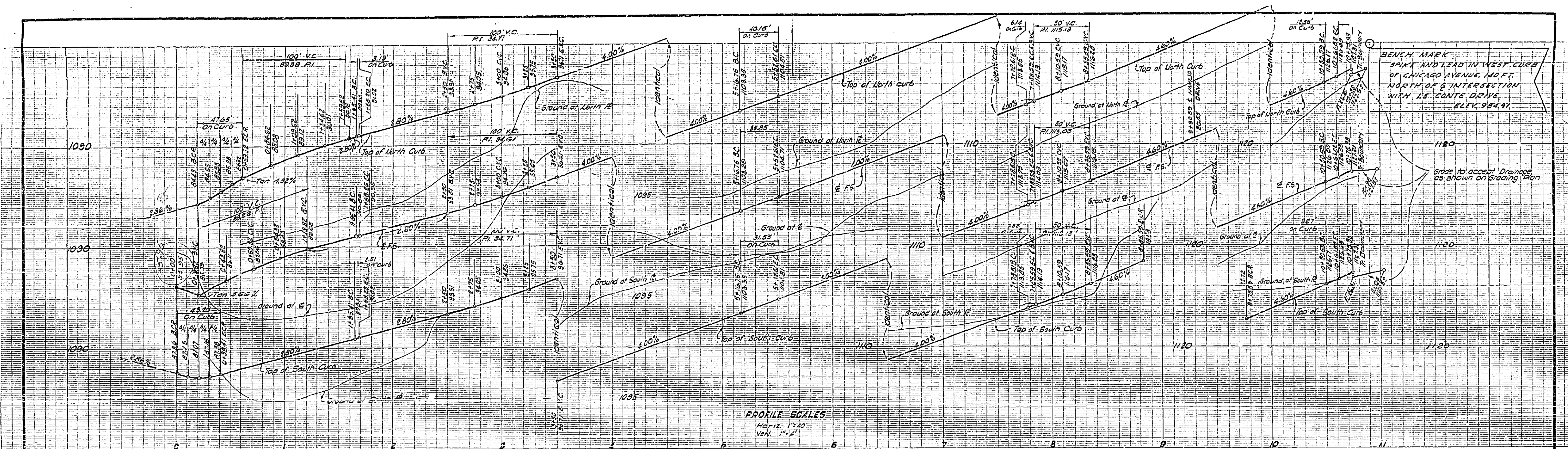
HAL HALLDIN ENGINEERING CO.
R.C.E. 9009 *Charles D. Hallidin* DATE SEPT. 3, 1963

REVISIONS			CITY OF RIVERSIDE, CALIFORNIA DEPARTMENT OF PUBLIC WORKS
MARK	DATE	DESCRIPTION	
①	11-17-63	WALL LOCATION on Blue	
②	3-5-64	Added AC Berm for side drainage control.	
③	6-27-64	Revised sidewalk location on south side of Navajo Dr. at Canyon Crest Dr.	
④	5-1-64	CHANGED AC. REVISION APPROX I.B.M. TO 12" OVER	

TRACT NO. 2693

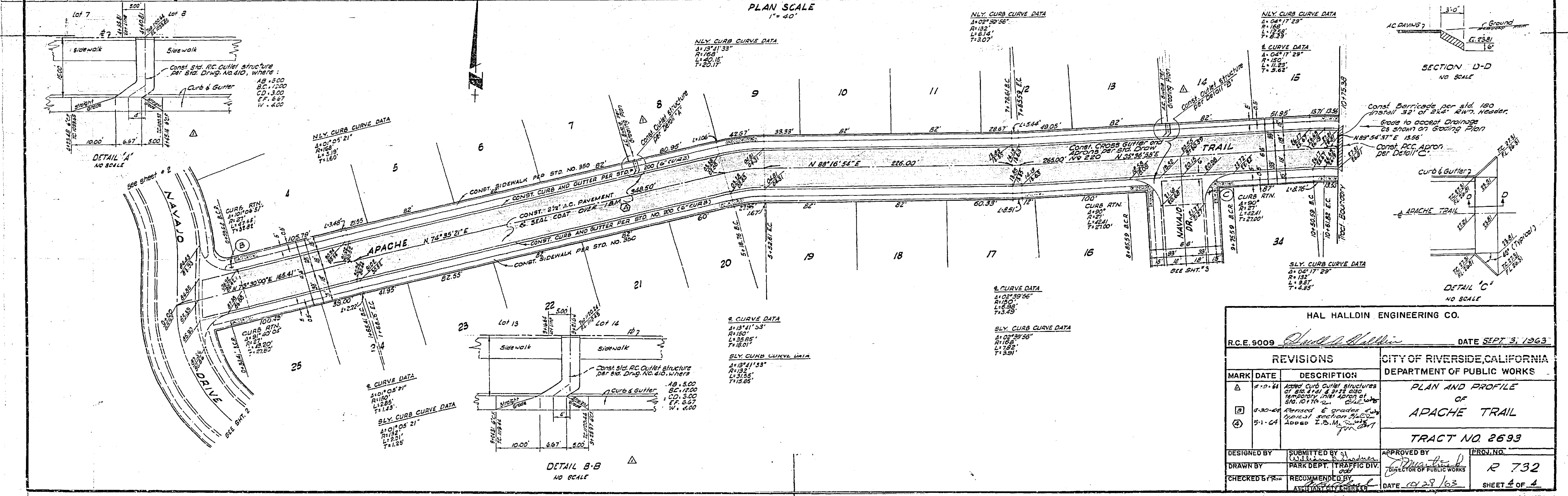
DESIGNED BY: *W. J. ...* SUBMITTED BY: *W. J. ...* APPROVED BY: *W. J. ...* PROJ. NO. R 732

DRAWN BY: *PARK DEPT. TRAFFIC DIV.* CHECKED BY: *...* RECOMMENDED BY: *...* DATE 10-28-63 SHEET 1 OF 4



PROFILE SCALE
 Horiz. 1"=40'
 Vert. 1"=1'

PLAN SCALE
 1"=40'



DETAIL 'A'
 NO SCALE

SECTION D-D
 NO SCALE

DETAIL 'C'
 NO SCALE

DETAIL B-B
 NO SCALE

R.C.E. 9009		DATE SEPT. 3, 1963	
DESIGNED BY		APPROVED BY	
DRAWN BY		RECOMMENDED BY	
CHECKED BY		DATE	
SUBMITTED BY		APPROVED BY	
PARK DEPT. TRAFFIC DIV.		DIRECTOR OF PUBLIC WORKS	
RECOMMENDED BY		DATE	
ASSISTANT CITY ENGINEER		DATE	

REVISIONS			CITY OF RIVERSIDE, CALIFORNIA DEPARTMENT OF PUBLIC WORKS
MARK	DATE	DESCRIPTION	
1	8-13-63	Added Curb & Gutter structures at 80' 11 1/2' & 81 1/2' also temporary initial location of sidewalk on 10' 0" wide grade strip	PLAN AND PROFILE OF APACHE TRAIL TRACT NO. 2693
2	8-30-63	Revised & grades & vertical section 80' 0" to 81 1/2'	
3	9-1-63	Added I.B.M. Survey	

PROJECT NO. R 732
 SHEET 4 OF 4