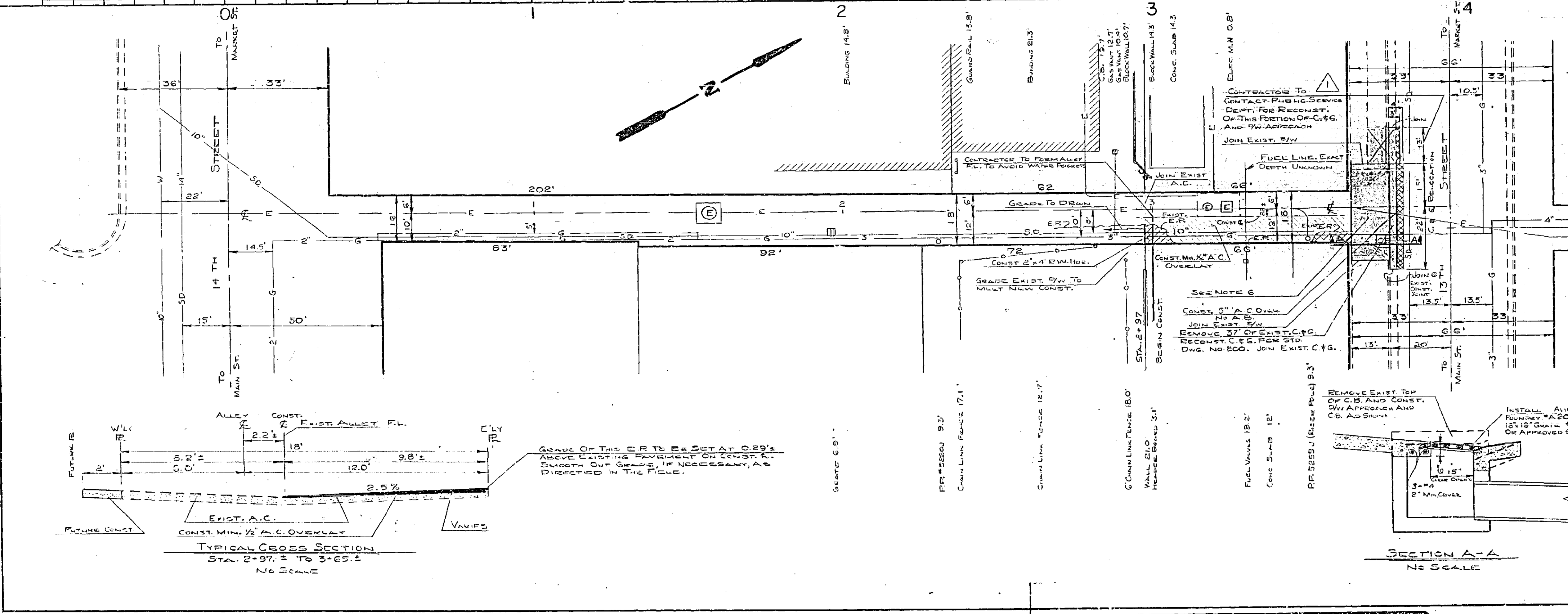
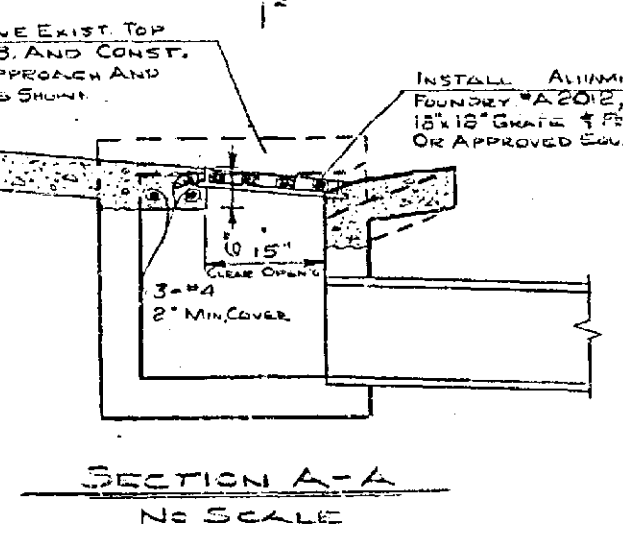
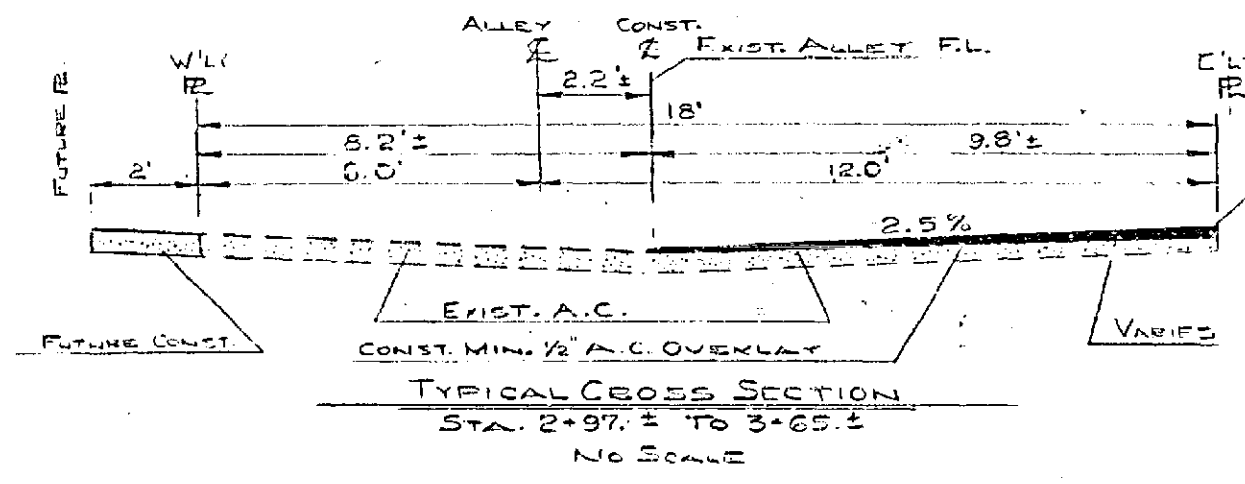


DATE	
BY	
CHECKED	
APPROVED	
PROJECT NO.	
NO. SHEETS	
DATE	

B.M. 833.04 BR. CAP. IN S.E.
 COR. C.B. S.W. COR. 13th
 & MARKET
 F.B. 124/43.44
 VERT. 1" = 4"
 SCALE HORZ. 1" = 20'



- NOTES**
1. ALL CONSTRUCTION SHALL BE IN ACCORDANCE WITH STANDARDS AND SPECIFICATIONS NO. 481 OF THE CITY OF RIVERSIDE, DEPARTMENT OF PUBLIC WORKS.
 2. FROM EDGE OF PAVING TO CLEAN STRAIGHT LINE, CONSTRUCT MATCH UP PAVING AS SHOWN AND OVERLAY EXISTING PAVING AS DIRECTED IN THE FIELD TO PRODUCE A SMOOTH "V"-SHAPED SECTION.
 3. IT SHALL BE THE RESPONSIBILITY OF THE CONTRACTOR TO CLEAR THE RIGHT OF WAY IN ACCORDANCE WITH THE PROVISIONS OF THE LAW AS IT AFFECTS EACH UTILITY, INCLUDING IRRIGATION LINES AND APPURTENANCES, AND AT NO COST TO THE CITY.
 4. PRIME COAT, PAINT BINDER, AND SEAL COAT WILL BE REQUIRED.
 5. THE EXISTENCE AND LOCATION OF ANY UNDERGROUND UTILITY PIPES AND STRUCTURES, HOW AND OBTAINED FROM AVAILABLE RECORDS. THE CONTRACTOR IS REQUIRED TO TAKE DUE PRECAUTIONARY MEASURES TO PROTECT THE UTILITY LINES SHOWN AND ANY OTHER UTILITY LINES NOT SHOWN ON THIS PLAN.
 6. CONST. 5" A.C. OVER PER STD. DWG. NO. 302 FOR CURB TYPE SIDEWALK, A-20' B-34'
- LEGEND**
- CONST. MIN. 1/2" A.C. OVERLAY
 - CONCRETE CONST.
 - CONST. 5" A.C. OVER NO A.B.



DESIGNED BY G.A.P.		SUBMITTED BY		APPROVED BY		PROJ. NO. 1012	
DRAWN BY J.W.		TRAFFIC DIV.		DATE 11-26-63		R-747	
CHECKED BY		RECOMMENDED BY		DATE		SHEET 1 OF 1	

DATE	
BY	
CHECKED	
APPROVED	
PROJECT NO.	
NO. SHEETS	
DATE	