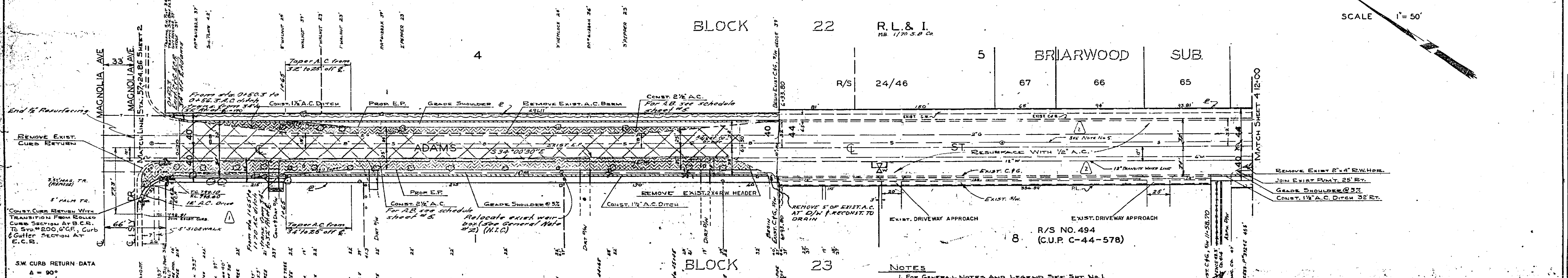


B.M. 798.614
 B.C. of cb. return on S.E. corner of
 Magnolia Ave. & Adams St.
 F.B. - G - 26/31
 SCALE: HOR. 1" = 50'
 VERT. 1" = 5'



S.W. CURB RETURN DATA

A = 90°
R = 35'
T = 35'
L = 54.98'

- NOTES
1. FOR GENERAL NOTES AND LEGEND SEE SH. NO. 1
 2. FOR DRIVEWAY RELOCATION SEE SCHEDULE ON SH. NO. 1
 3. FOR TYPICAL CROSS-SECTION SEE SHEET NO. 3
 4. FOR DETAIL OF SOUTH WEST CORNER OF ADAMS & MAGNOLIA INCLUDING P.W. AT STA. 1+53.40 RT. SEE SHEET NO. 5
 5. PROPOSED SIGN EXTENSION BETWEEN P.H. AT STATION 3+33 & STATION 4+63

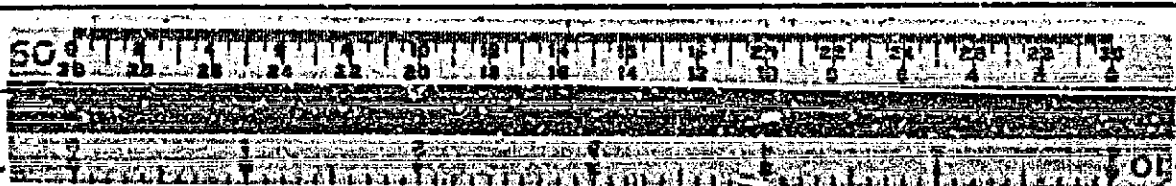
REVISIONS			CITY OF RIVERSIDE, CALIFORNIA DEPARTMENT OF PUBLIC WORKS	
MARK	DATE	DESCRIPTION	MAJOR CITY STREETS PROJECT NO. 117	
Δ	7-14-64	REVISIONS FOR STATE DEPARTMENT	ADAMS STREET	
Δ	11-5-64	ADDED 12" TRANSVERSE LINE & V.C.P. SEWER LINE	400' NLY GARFIELD TO DIANA AVE.	
PUBLIC UTILITIES			APPROVED BY	PROJ. NO. 3082
DESIGNED BY	DRIVEN BY	TRAFFIC DIV.	DATE	SHEET 3 OF 6
CHECKED BY	REVISIONS			

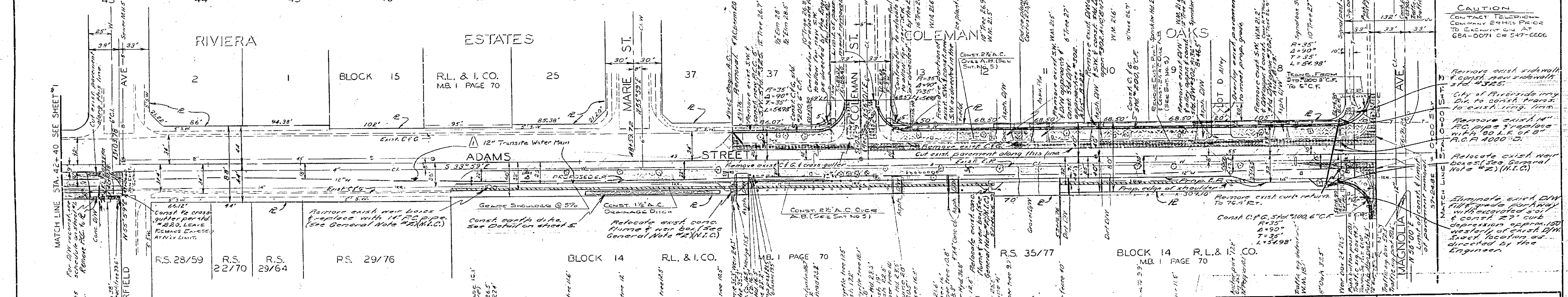
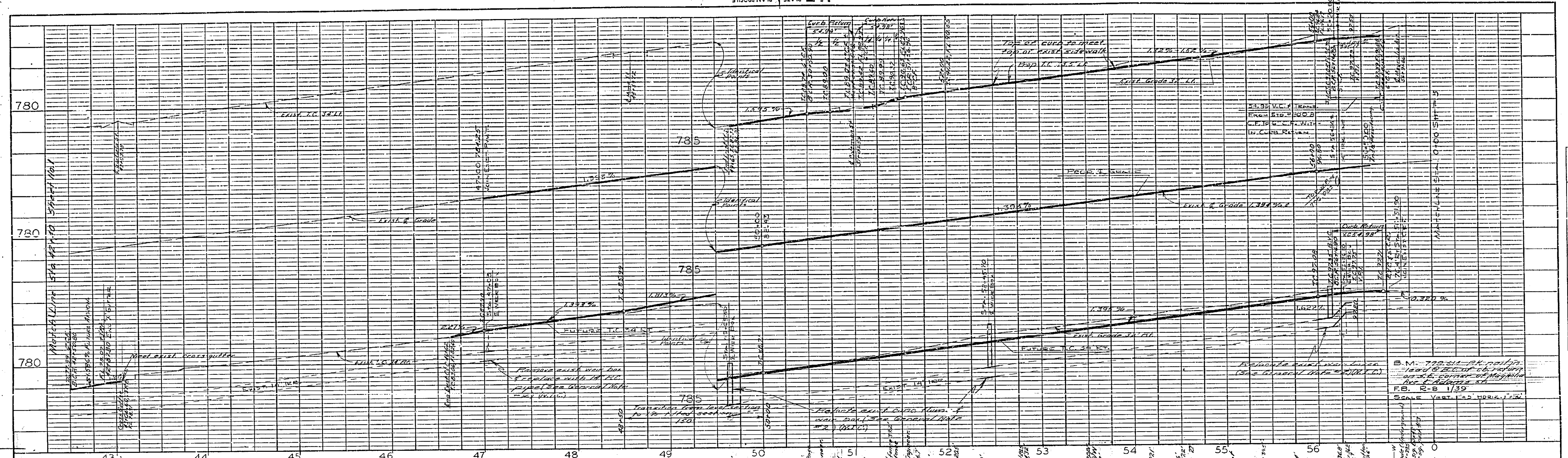
PROFILE

DATE	
BY	
CHECKED	
APPROVED	

PLAN

DATE	
BY	
CHECKED	
APPROVED	





Notes:
 1. For General Notes and Legend see sheet #1
 2. For utility relocation see schedule on sheet #1
 3. For typical cross-section see sheet #5.

SCALE N 1" = 50'

REVISIONS		CITY OF RIVERSIDE, CALIFORNIA DEPARTMENT OF PUBLIC WORKS	
MARK	DATE	DESCRIPTION	MAJOR CITY STREETS PROJECT NO. 117
Δ	11-6-64	Added 12" Transite Water Main BE.	ADAMS STREET 400' NLY GARFIELD TO DIANA AVE.
PUBLIC UTILITIES		APPROVED BY: <i>[Signature]</i>	
DESIGNED BY: <i>[Signature]</i>	SUBMITTED BY: <i>[Signature]</i>	APPROVED BY: <i>[Signature]</i>	PROJ. NO. 3022
URBANY BY: <i>[Signature]</i>	PARK DEPT. TRAFFIC DIV.	DATE: 5-28-64	R-752
CHECKED BY: <i>[Signature]</i>	RECOMMENDED BY: <i>[Signature]</i>		SHEET 2 OF 6

PROFILE	DATE
NOTE BOOK	
BY: M. W. KELLEY	
PROJECT: ADAMS STREET	

PLAN	DATE
NOTE BOOK	
BY: M. W. KELLEY	
PROJECT: ADAMS STREET	

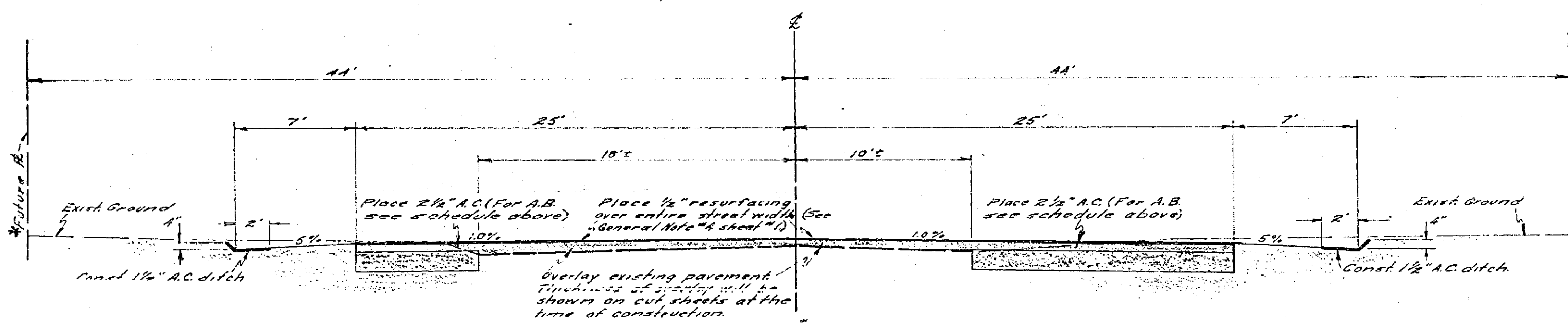
CAUTION
 CONTACT TELEPHONE
 COMPANY BEFORE PROCEEDING
 TO EXCAVATE AT
 684-0071 OR 547-6666

Relocate exist sidewalk
 & const. new sidewalk
 3' wide @ 2.5%
 City of Riverside may
 file to const. front
 to exist strip line.
 Relocate exist 14"
 RC pipe & replace
 with 20" R.C. @ 2"
 R.C. @ 4000' S.
 Relocate exist man
 base @ 500' R.C. @ 4"
 Note #2 (N.I.C.)
 Relocate exist D.W.
 fill grade 20' away
 with 20" R.C. @ 2"
 & const. 27" curb
 depression approx. 120'
 west of exist D.W.
 Exact location will
 be directed by the
 Engineer.

Total Sta	10	43	55	2175	10175	17275
P Value	62	50	55	70	70	61
Min Cover	7"	10"	4"	5"	5"	7"

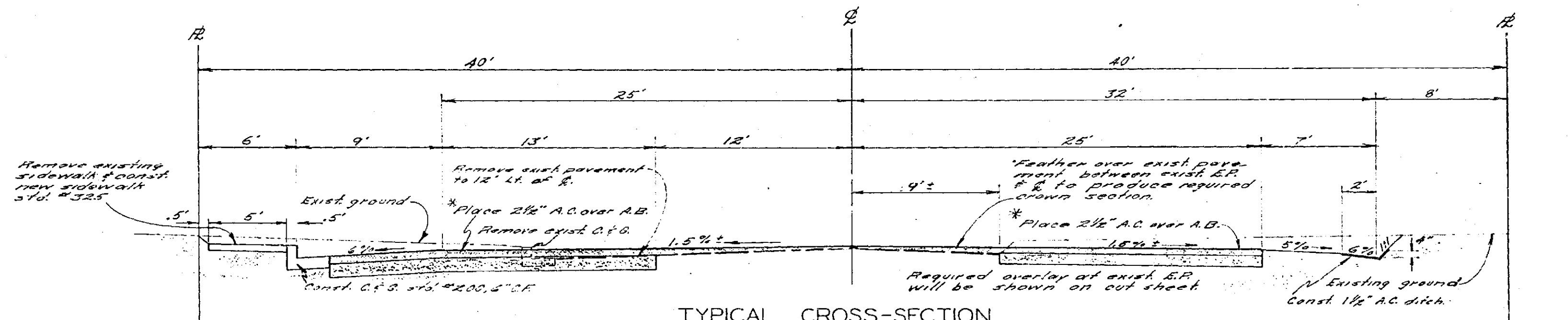
AGGREGATE BASE SCHEDULE

NO SCALE
T.I.=7



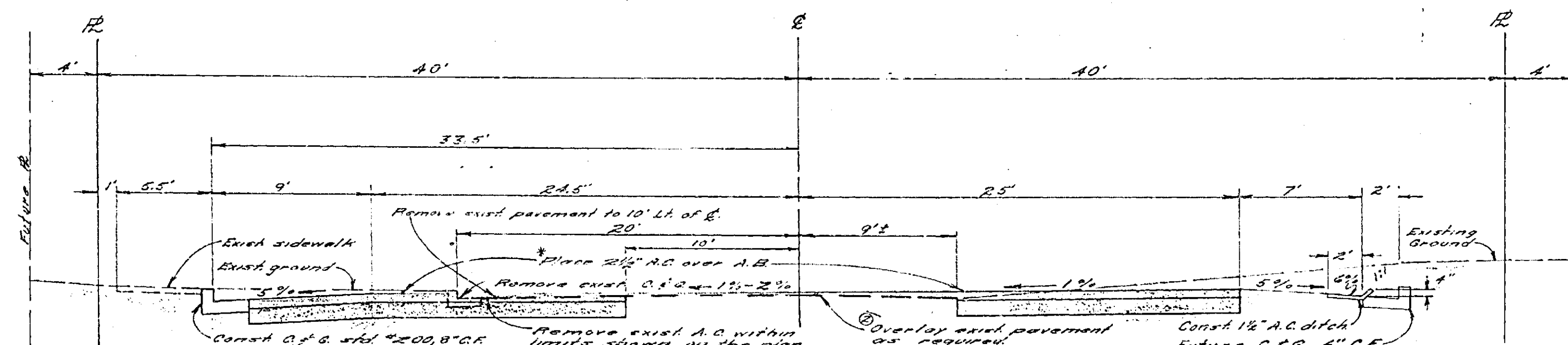
TYPICAL CROSS-SECTION

STA. 0+00 TO STA. 6+94 LEFT
SCALE 1"=5'
STA. 0+00 TO STA. 20+50 RIGHT



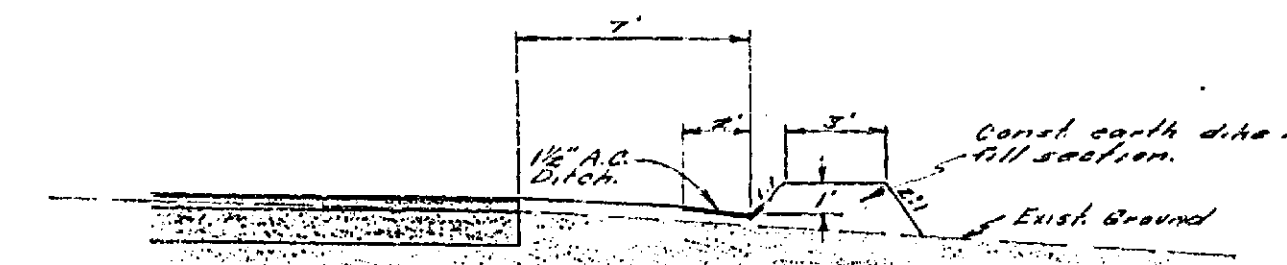
TYPICAL CROSS-SECTION

LEFT FROM STA. 49+65 TO STA. 51+03.59
SCALE 1"=5'
RIGHT FROM STA. 39+25.70 TO STA. 50+00



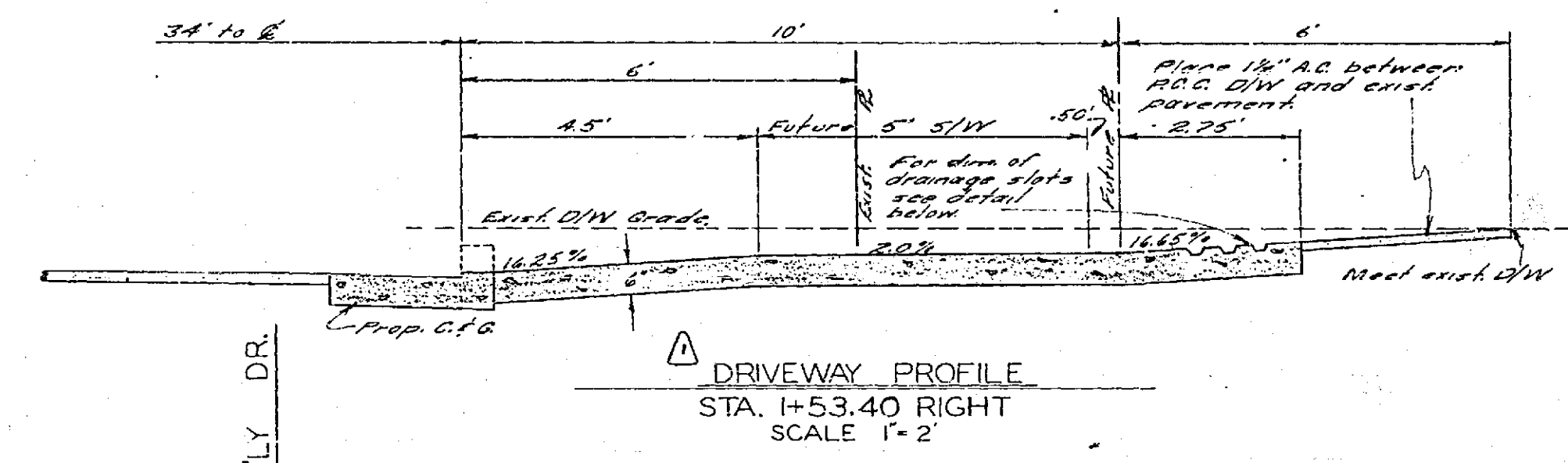
TYPICAL CROSS-SECTION

LEFT FROM STA. 51+03.59 TO STA. 56+51.90
SCALE 1"=5'
RIGHT FROM STA. 50+00 TO STA. 56+51.90



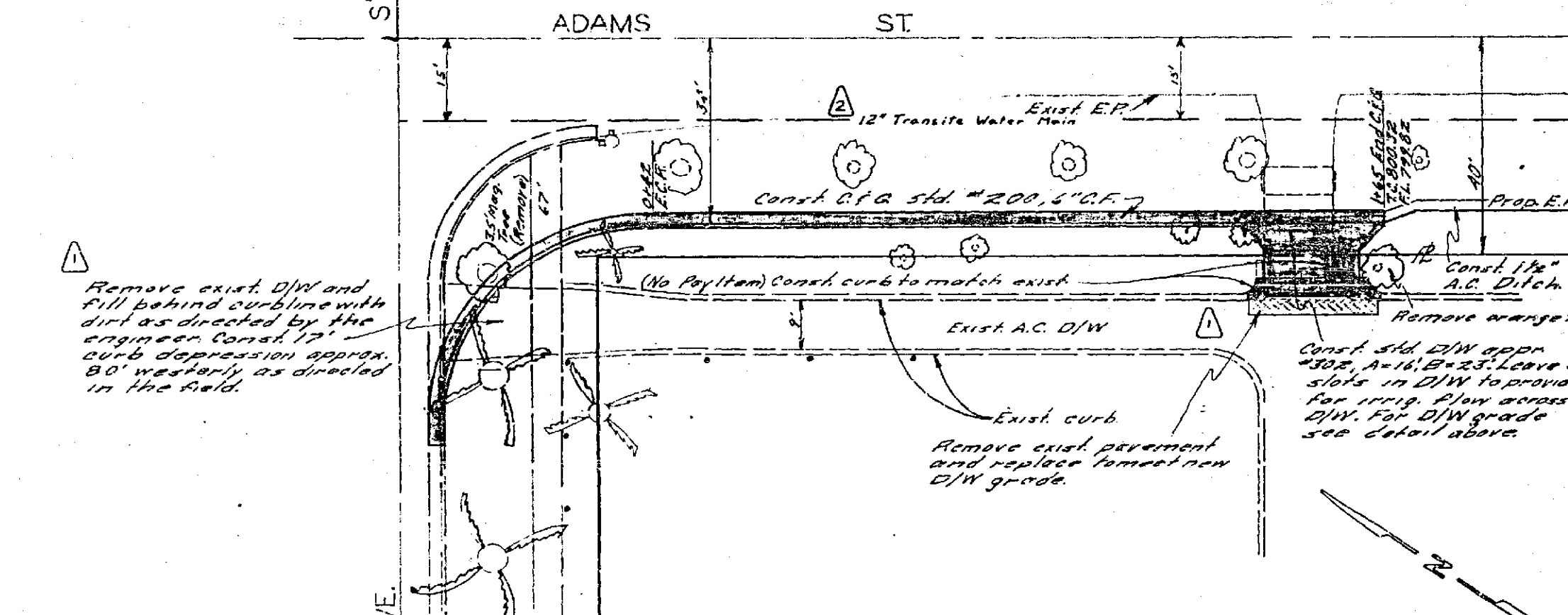
DETAIL OF EARTH DIKE IN FILL SECTION

STA. 48+25 TO STA. 49+65
STA. 17+25 TO STA. 17+75
SCALE 1"=5'



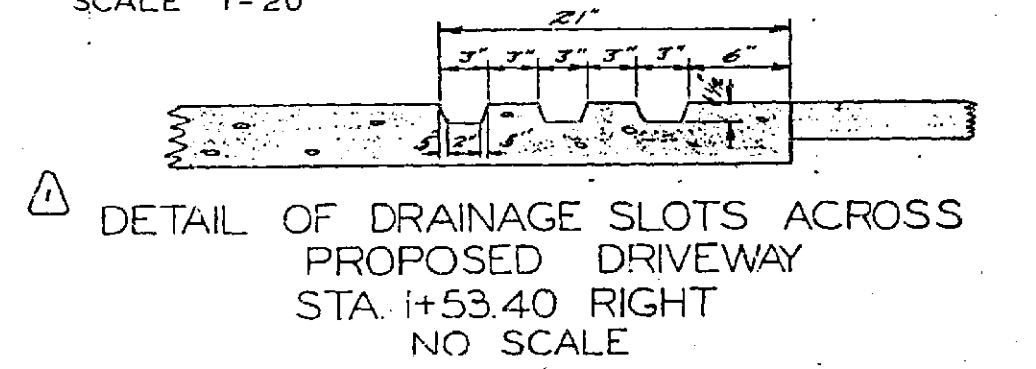
DRIVEWAY PROFILE

STA. 1+53.40 RIGHT
SCALE 1"=2'



DRIVEWAY DETAIL

SOUTHWEST CORNER MAGNOLIA AVE & ADAMS ST
SCALE 1"=20'



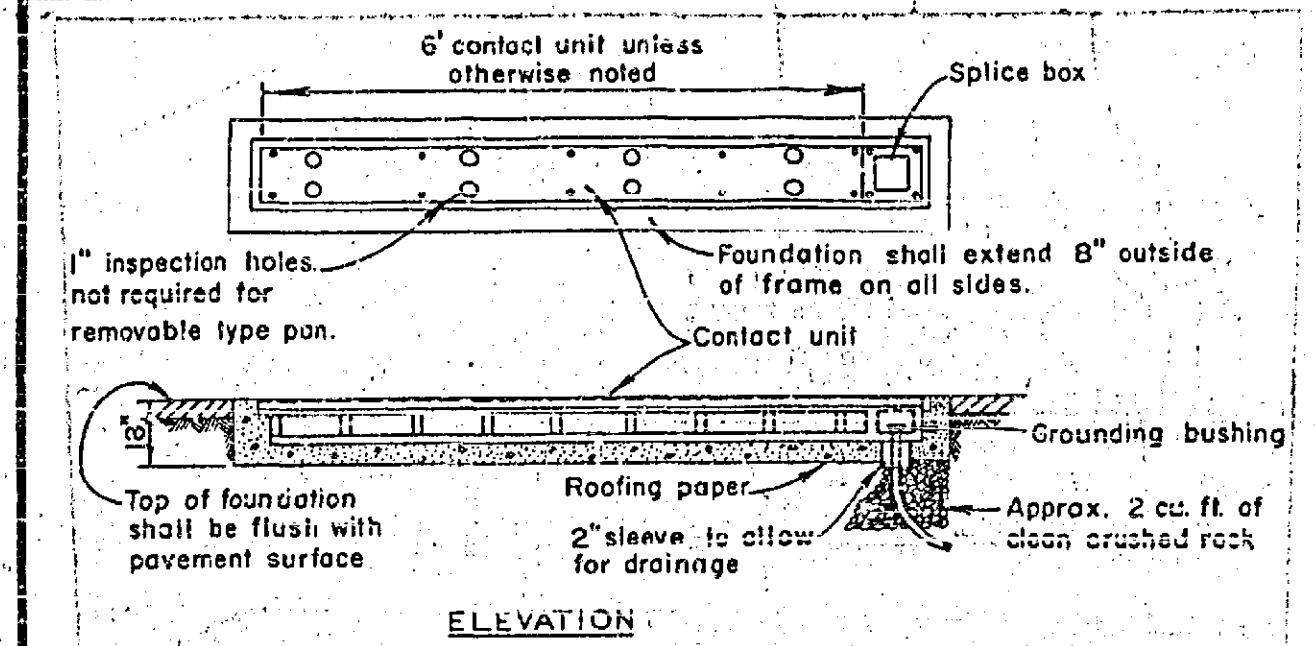
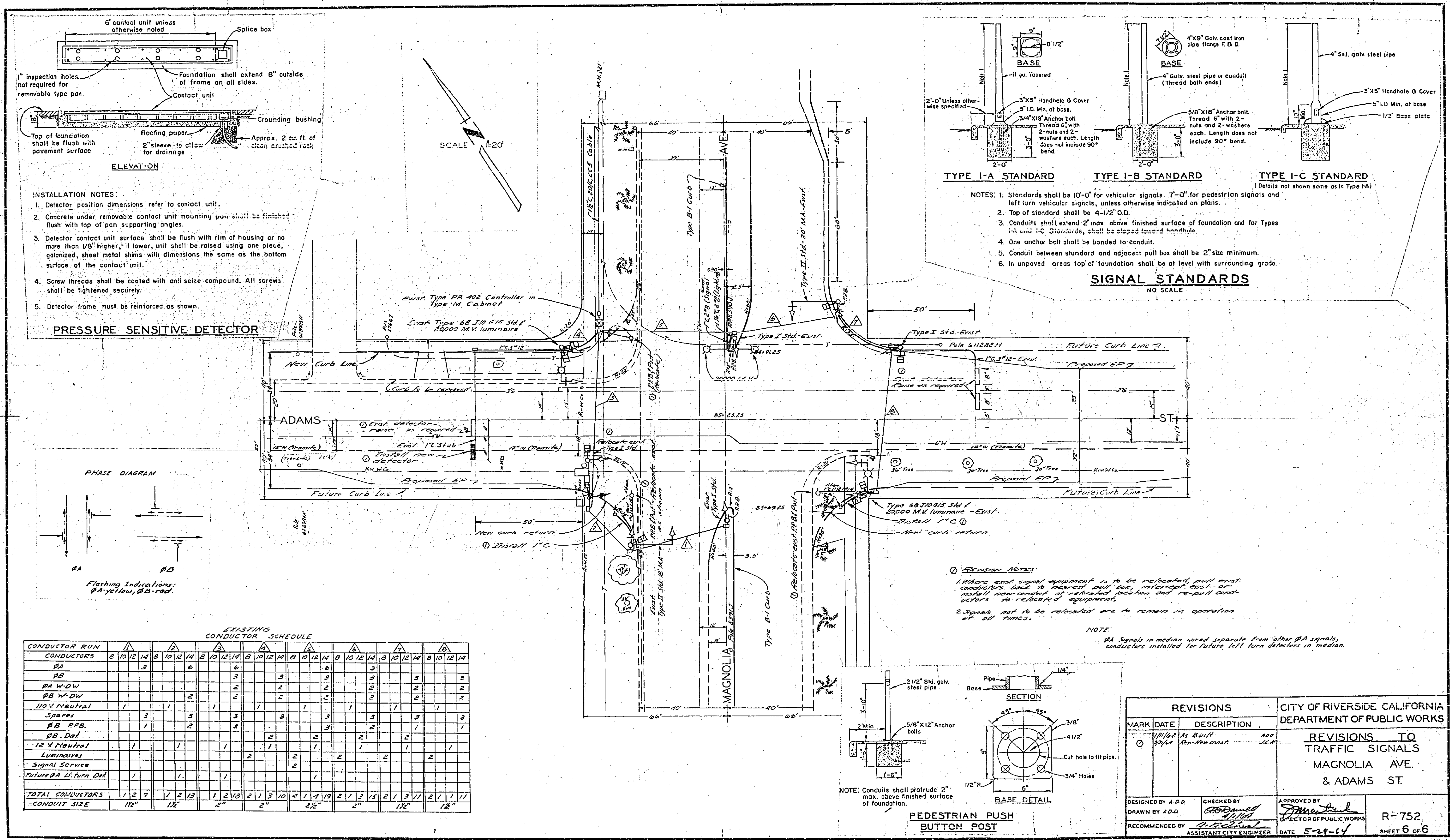
DETAIL OF DRAINAGE SLOTS ACROSS PROPOSED DRIVEWAY

STA. 1+53.40 RIGHT
NO SCALE

REVISIONS			CITY OF RIVERSIDE, CALIFORNIA	
MARK	DATE	DESCRIPTION	DEPARTMENT OF PUBLIC WORKS	
Δ	7-14-64	Revisions per state revision book	MAJOR CITY STREETS PROJECT NO. 117	
Δ	11-6-64	12" Transit Water Main	ADAMS STREET	
			DETAIL SHEET	
DESIGNED BY	SUBMITTED BY	APPROVED BY	PROJ. NO. 3022	
DRAWN BY V.G.	PARK DEPT.	DIRECTOR OF PUBLIC WORKS	R-752	
CHECKED BY	RECOMMENDED BY	DATE: 5-19-64	SHEET 3 OF 6	

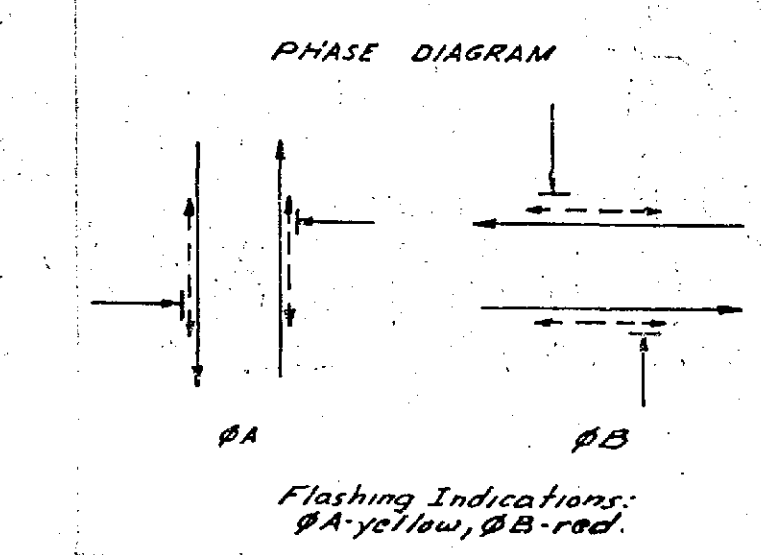
- NOTES:**
- Structural cross-section from station 48+50 to 50+00 remains the same. Crown section to change from a 1.5% level section to a 1% filled section.
 - Thickness of overlay is variable and will be shown on cut sheets issued at the time of construction.
 - For General Notes see sheet #1.
 - See General Note #4 sheet #1 for resurfacing.

FILE COPY



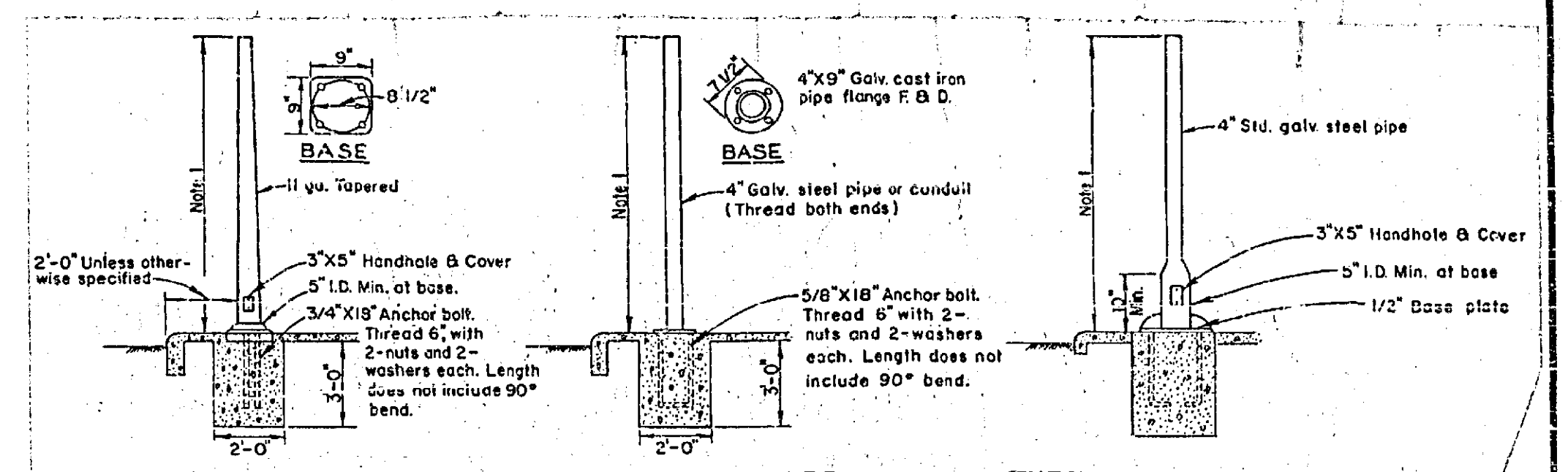
- INSTALLATION NOTES:**
1. Detector position dimensions refer to contact unit.
 2. Concrete under removable contact unit mounting pan shall be finished flush with top of pan supporting angles.
 3. Detector contact unit surface shall be flush with rim of housing or no more than 1/8" higher, if lower, unit shall be raised using one piece, galvanized, sheet metal shims with dimensions the same as the bottom surface of the contact unit.
 4. Screw threads shall be coated with anti seize compound. All screws shall be tightened securely.
 5. Detector frame must be reinforced as shown.

PRESSURE SENSITIVE DETECTOR

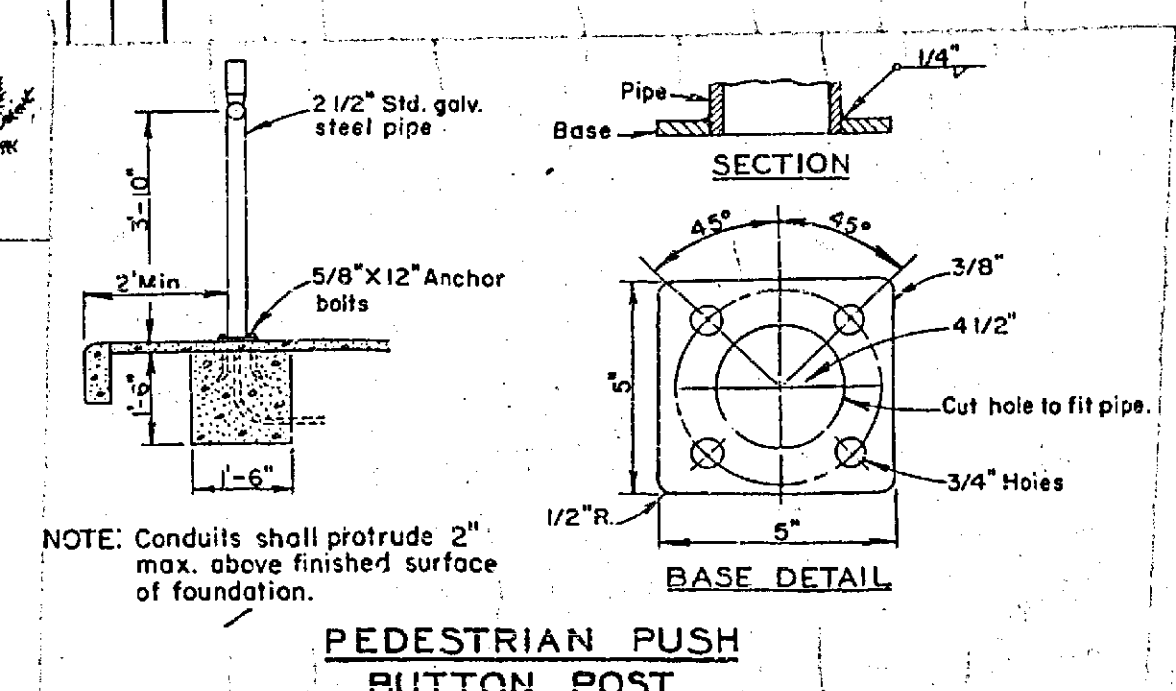


EXISTING CONDUCTOR SCHEDULE

CONDUCTOR RUN	A		B		C		D		E		F		G		H	
CONDUCTORS	8	10	12	14	8	10	12	14	8	10	12	14	8	10	12	14
PA					6				3				3			
PB																
PA W-DW																
PB W-DW																
110V Neutral	1				1				1				1			
Spare		3				3				3				3		
PB PFB		1				2				2				1		
PB Det																
12 V Neutral	1				1				1				1			
Luminaires						2				2				2		
Signal Service																
Future PA L-Turn Det	1				1				1				1			
TOTAL CONDUCTORS	1	2	7		1	2	13		1	2	13		1	2	13	
CONDUIT SIZE	1 1/2"		1 1/2"		2"		2"		2 1/2"		2"		1 1/2"		1 1/2"	



- SIGNAL STANDARDS**
NO SCALE
- NOTES:**
1. Standards shall be 10'-0" for vehicular signals, 7'-0" for pedestrian signals and left turn vehicular signals, unless otherwise indicated on plans.
 2. Top of standard shall be 4'-1/2" O.D.
 3. Conduits shall extend 2" max. above finished surface of foundation and for Types I-A and I-C Standards, shall be sloped toward handhole.
 4. One anchor bolt shall be bonded to conduit.
 5. Conduit between standard and adjacent pull box shall be 2" size minimum.
 6. In unpaved areas top of foundation shall be at level with surrounding grade.



- REVISION NOTES:**
1. Where exist signal equipment is to be relocated, pull exist conductors back to nearest pull box, intercept exist or install new conduit at relocated location and re-pull conductors to relocated equipment.
 2. Signals not to be relocated are to remain in operation of all times.
- NOTE:**
PA Signals in median wired separate from other PA signals, conductors installed for future left turn detectors in median.

REVISIONS		CITY OF RIVERSIDE CALIFORNIA DEPARTMENT OF PUBLIC WORKS
MARK	DATE	
0	1/11/62	As Built
	3/9/62	As New Const

**REVISIONS TO TRAFFIC SIGNALS
MAGNOLIA AVE.
& ADAMS ST.**

DESIGNED BY ADD	CHECKED BY G.P. Daniel	APPROVED BY [Signature]
DRAWN BY ADD	RECOMMENDED BY [Signature]	DATE 5-28-64
		R-752 SHEET 6 of 6

