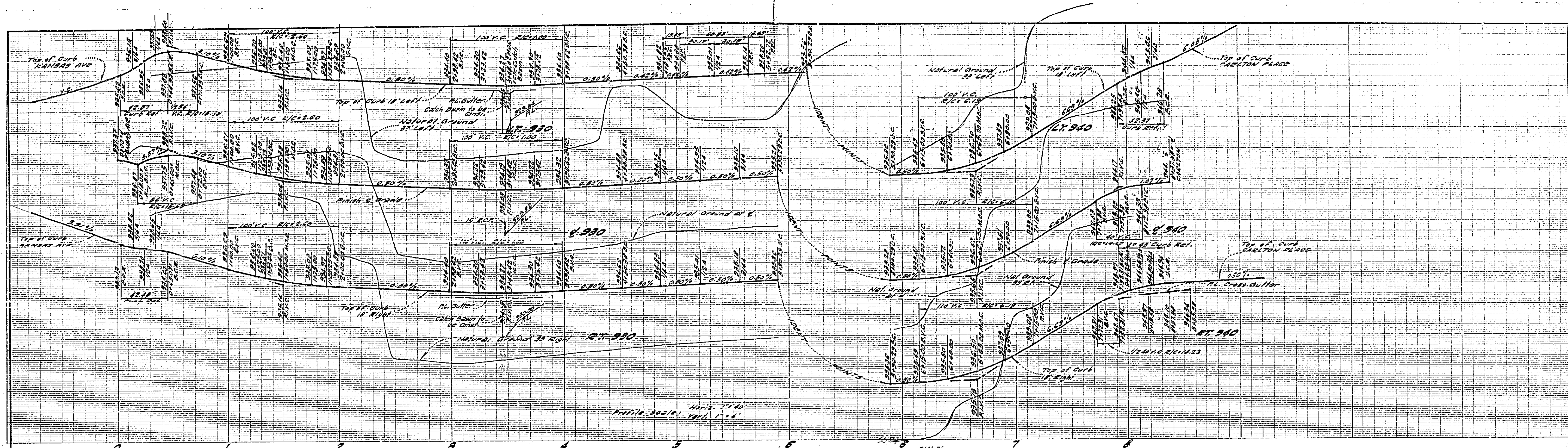


GARNER TRACADAS & TROY
360 NORTH ARROWHEAD AVE.
SAN BERNARDINO CALIFORNIA

FRANK TRACADAS
RE NO 11447

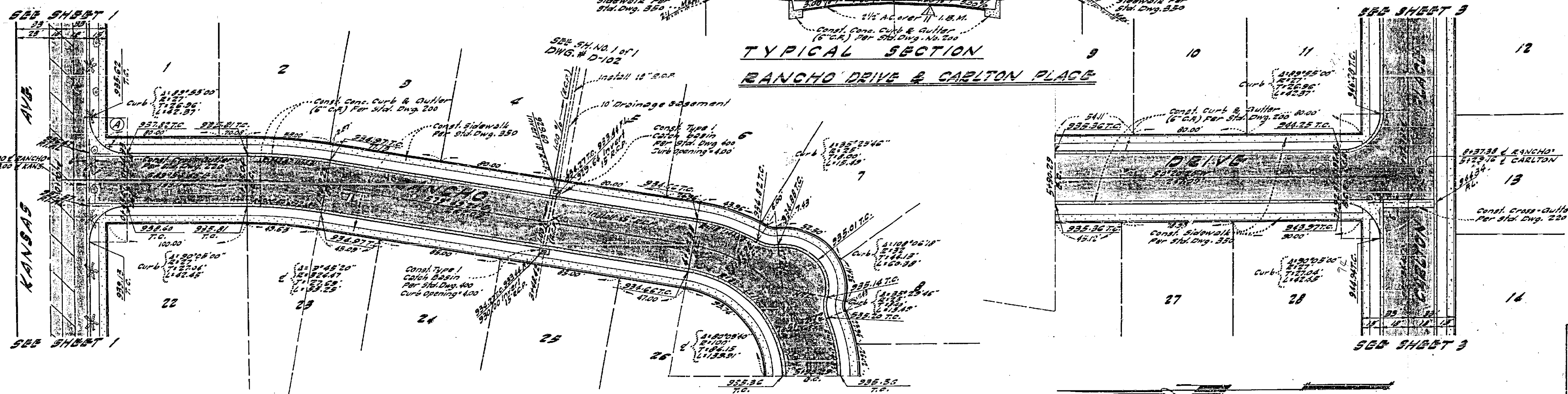
BENCH MARK: Lead & Nail in curb at N.W. Cor. Kansas Ave. & Prince Albert Drive. Elev. 253.30

| REVISIONS | | | CITY OF RIVERSIDE CALIFORNIA DEPARTMENT OF PUBLIC WORKS | |
|-------------|----------------|---|--|--|
| MARK | DATE | DESCRIPTION | | |
| Δ | 6/2/64 | 11' B.M. added to typical section - Tulip Court Frank Tracadas | TRACT NO 2716 CARLTON PLACE | |
| DESIGNED BY | CURTNEY BY | APPROVED BY | PROJ. NO. | |
| DRAWN BY | PARK DEPT. | TRAFFIC DIV | 12-758 | |
| CHECKED BY | RECOMMENDED BY | DATE 2-18-64 | SHEET 3 OF 3 | |



Profile Scale: Horiz. 1" = 40' Vert. 1" = 4'

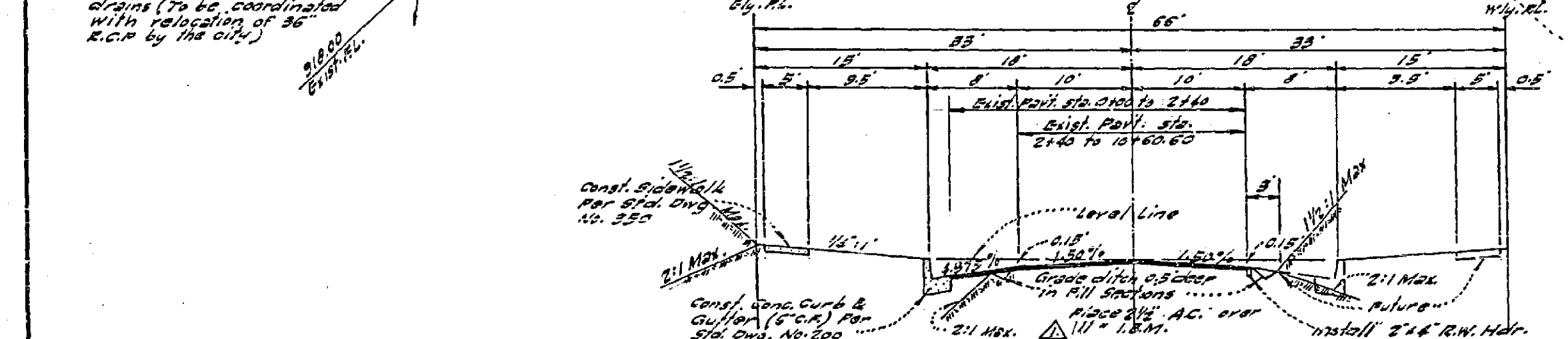
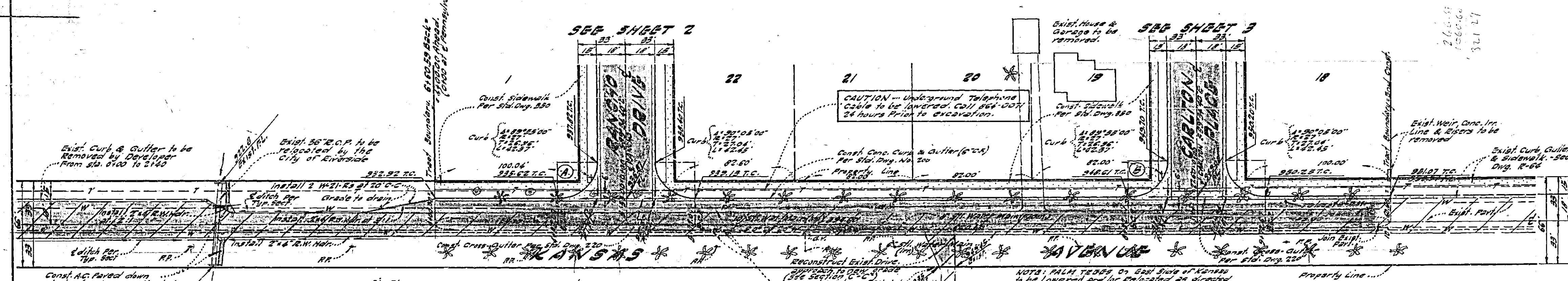
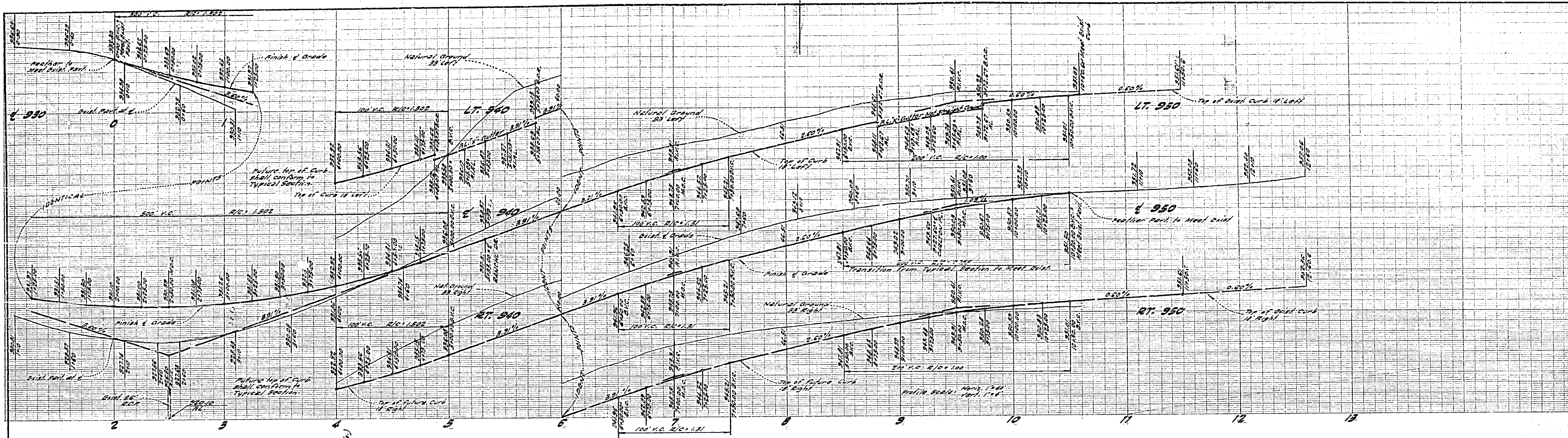
**TYPICAL SECTION
RANCHO DRIVE & CARLTON PLACE**



**PLAN & PROFILE
RANCHO DRIVE**

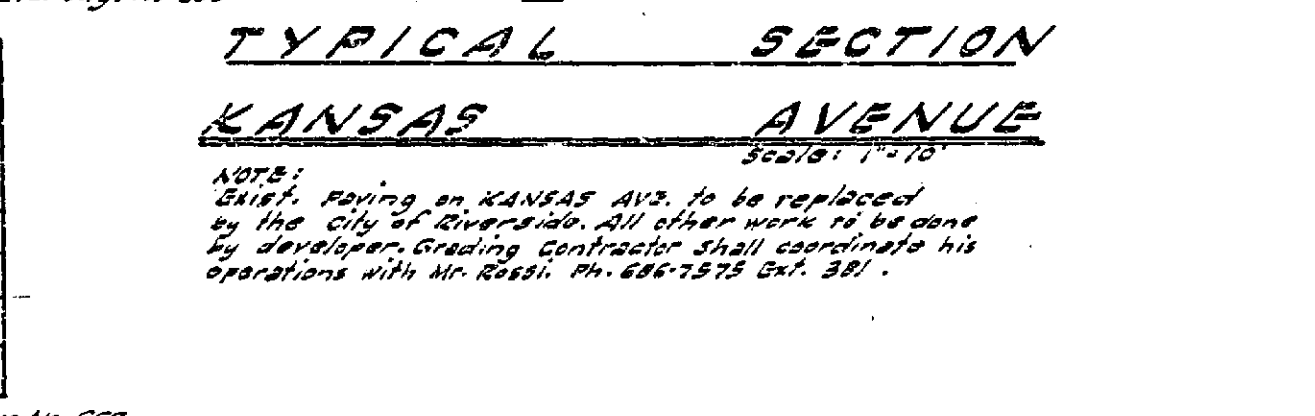
GARNER TRACADAS & TROY
360 NORTH ARROWHEAD AVE.
SAN BERNARDINO, CALIFORNIA
Frank Tracadas 10/16/63
FRANK TRACADAS RE NO 11447

| REVISIONS | | | CITY OF RIVERSIDE, CALIFORNIA DEPARTMENT OF PUBLIC WORKS | |
|-------------|-------------------------|---|---|--------------|
| MARK | DATE | DESCRIPTION | PLAN & PROFILE | |
| Δ | 6/2/64 | 1 1/2" H. added to vertical section - Rancho Drive & Carlton Place - Frank Tracadas | TRACT NO. 2716 RANCHO DRIVE | |
| DESIGNED BY | SUBMITTED BY | APPROVED BY | PROJ. NO. | |
| DRAWN BY | PARK DEPT. TRAFFIC DIV. | <i>Frank Tracadas</i> | R-758 | |
| CHECKED BY | RECOMMENDED BY | DATE | | SHEET 2 OF 3 |
| | | 2-19-64 | | |



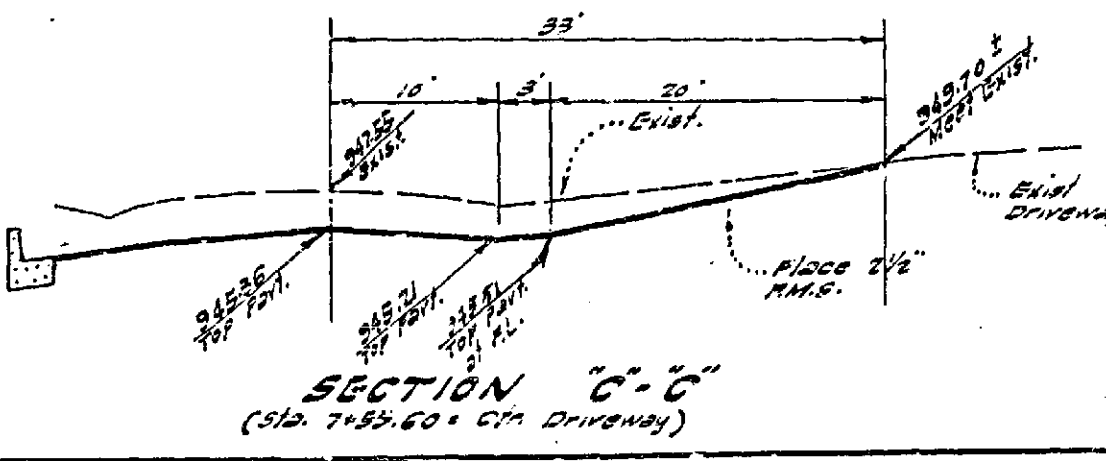
STREET NAME SIGN SCHEDULE

| | |
|---|---------------|
| A | KANSAS AVENUE |
| B | RANCHO DRIVE |
| C | CARLTON PLACE |
| D | TULIP COURT |



PLAN & PROFILE

KANSAS AVENUE



GENERAL NOTES

1. Show Man's Level & sign in curb at NW. on KANSAS AVE. & PRINCE STREET DRIVE. Elevation + 322.30.
2. All work shall be done in accordance with these plans, Standard Specifications No. 401, and the Standard Drawings of the City of Riverside, Dept. of Public Works.
3. It shall be the responsibility of the Contractor to clear the right of way in accordance with the provisions of the law as it affects such utility, including irrigation lines & easements, and at no cost to the City.
4. Prime Coat, Patch Under and Seal Coat are required.
5. The City of Riverside will take a 24 hr. test to determine the required amount of imported Base Material after the Streets have been prepared to push grade.
6. Grading will require a permit under Ordinance No. 3093 for a cut or fill exceeding 100 cu. yds., or a fill over one foot in depth.

/// Denotes limits of existing pavement.

APPROVED BY: *Howard C. Green*
CITY OF RIVERSIDE - IRRIGATION DIVISION

GARNER TRACADAS & TROY
360 NORTH ARROWHEAD AVE.
SAN BERNARDINO, CALIFORNIA

Frank Tracadas
FRANK TRACADAS

collected
RE NO 11497

| REVISIONS | | | CITY OF RIVERSIDE CALIFORNIA DEPARTMENT OF PUBLIC WORKS |
|-----------|--------|--|--|
| MARK | DATE | DESCRIPTION | |
| Δ | 6/2/64 | 11' I.B.M. added to typical section - Kansas Avenue <i>Frank Tracadas</i> | PLAN & PROFILE TRACT NO. 2716 KANSAS AVE. |
| | | | |

DESIGNED BY: *William E. Shadwin*
DRAWN BY: *W. E. Shadwin*
CHECKED BY: *W. E. Shadwin*

SUBMITTED BY: *William E. Shadwin*
PARK DEPT. TRAFFIC DIV.
RECOMMENDED BY: *William E. Shadwin*
CITY ENGINEER

APPROVED BY: *Anna B. Bickel*
DIRECTOR OF PUBLIC WORKS

PROJ. NO. **R-758**
DATE **2-18-64**
SHEET 1 OF 3

Inventor's Seal

1. Furnish & install Street Name Signs & Posts Per City Std. Day No. 622.
2. Contractor to Contact City Traffic Division Prior to erecting signs, for Street Numbers.