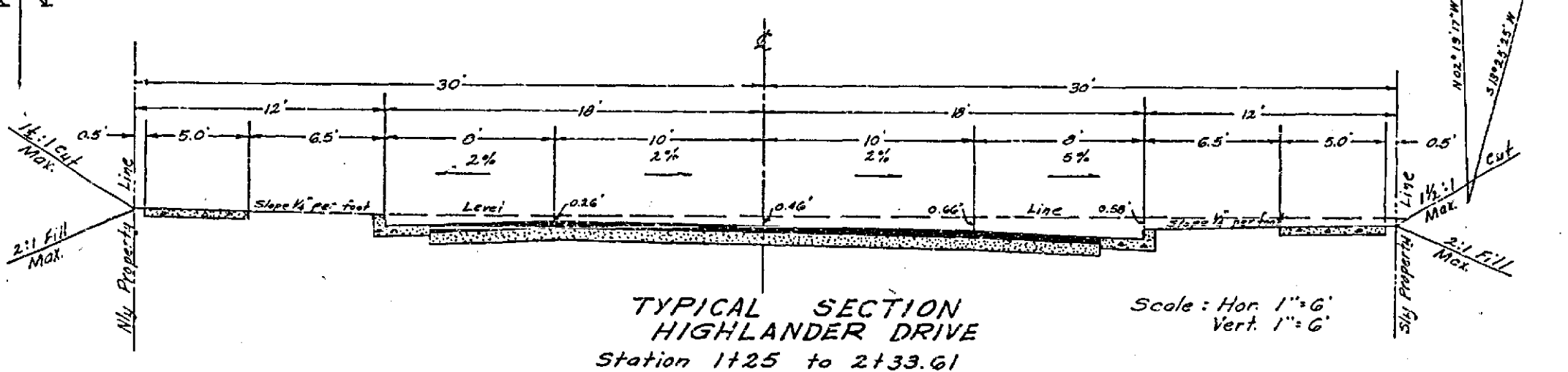
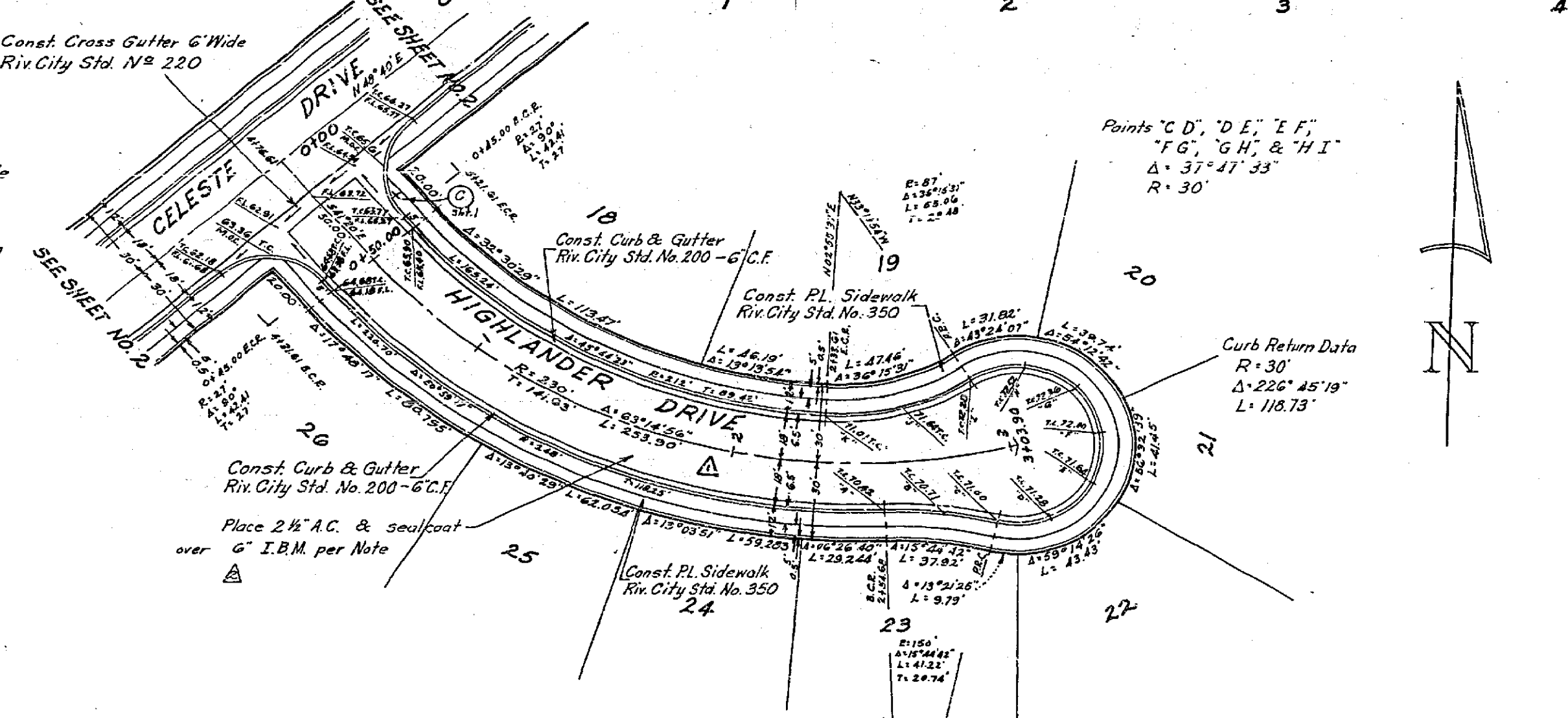


**TYPICAL SECTION
BLAINE STREET
Station 1+00**

Scale: Hor. 1"=6'
Vert. 1"=6'

Typical Section Const. Notes
Place 2 1/2" A.C. and sealcoat over 10" I.B.M. per General Note
Const. curb & gutter & sidewalk - 8" C.F. - per Riv. City Std. No. 325
Overlay pavement as directed in the field, General Note No. 6



**TYPICAL SECTION
HIGHLANDER DRIVE
Station 1+25 to 2+33.61**

Scale: Hor. 1"=6'
Vert. 1"=6'

Typical Section Const. Notes
Place 2 1/2" A.C. and sealcoat over 6" I.B.M. per General Note
Const. curb & gutter - 6" C.F. - per Riv. City Std. No. 200
Const. property line sidewalk per Riv. City Std. No. 350
Elevation 1160.99

T.B.M. 'X' on top Flange of Fire Hydrant 25' Wly & Celeste Drive of Station 316.61
Elevation 1160.99

REVISIONS		
MARK	DATE	DESCRIPTION
Δ	3-10-64	Rev. Street Grades on Highlander Drive
Δ	7-9-64	Added I.B.M. Requirements

F.B. 055-15

J. F. DAVIDSON-CIVIL ENGINEER
R.E. NO. 862
RIVERSIDE, CALIFORNIA

APPROVED BY: *[Signature]* DATE: 12/2/63

CITY OF RIVERSIDE, CALIFORNIA
DEPARTMENT OF PUBLIC WORKS

STREET PLAN & PROFILE
TRACT 2765
BLAINE STREET
& HIGHLANDER DRIVE

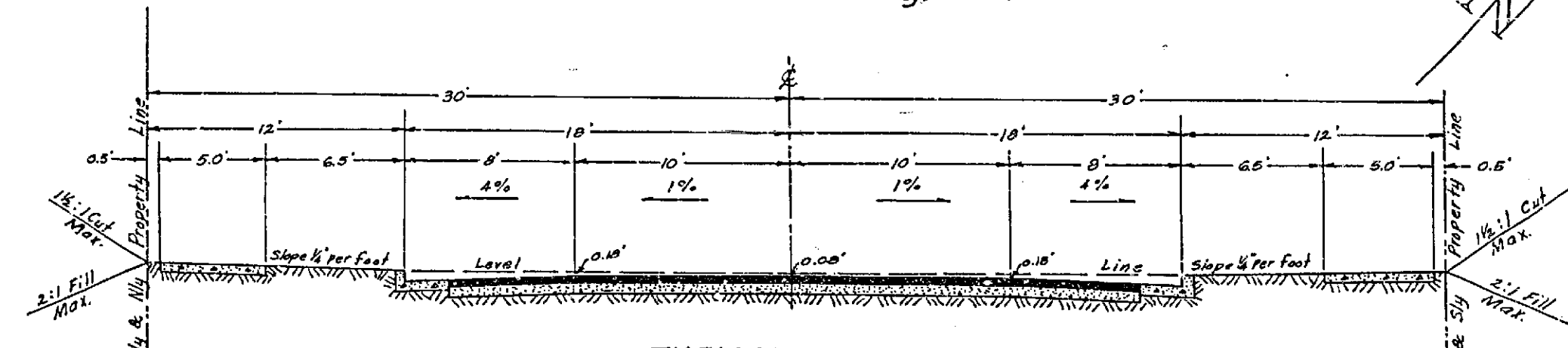
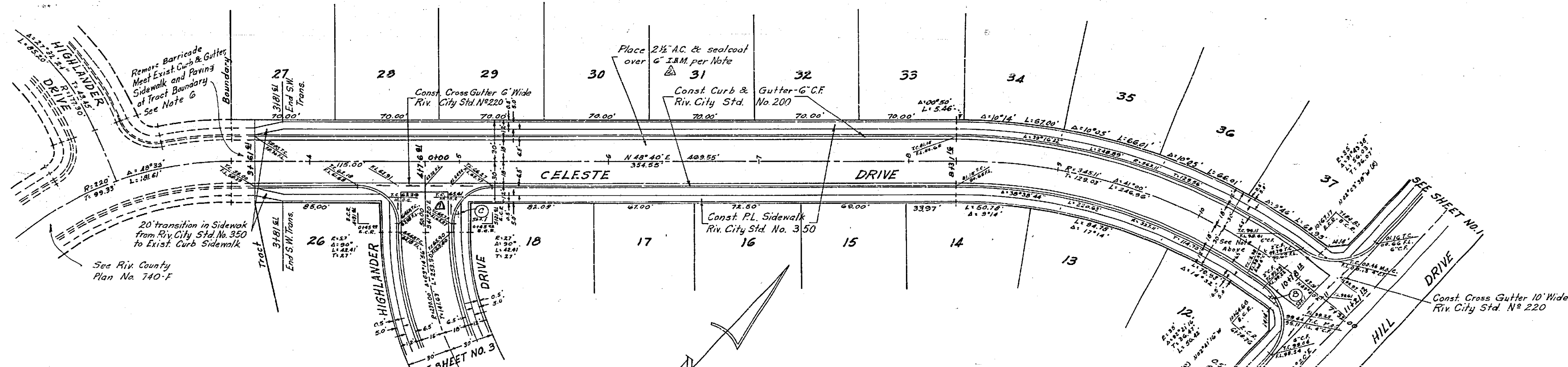
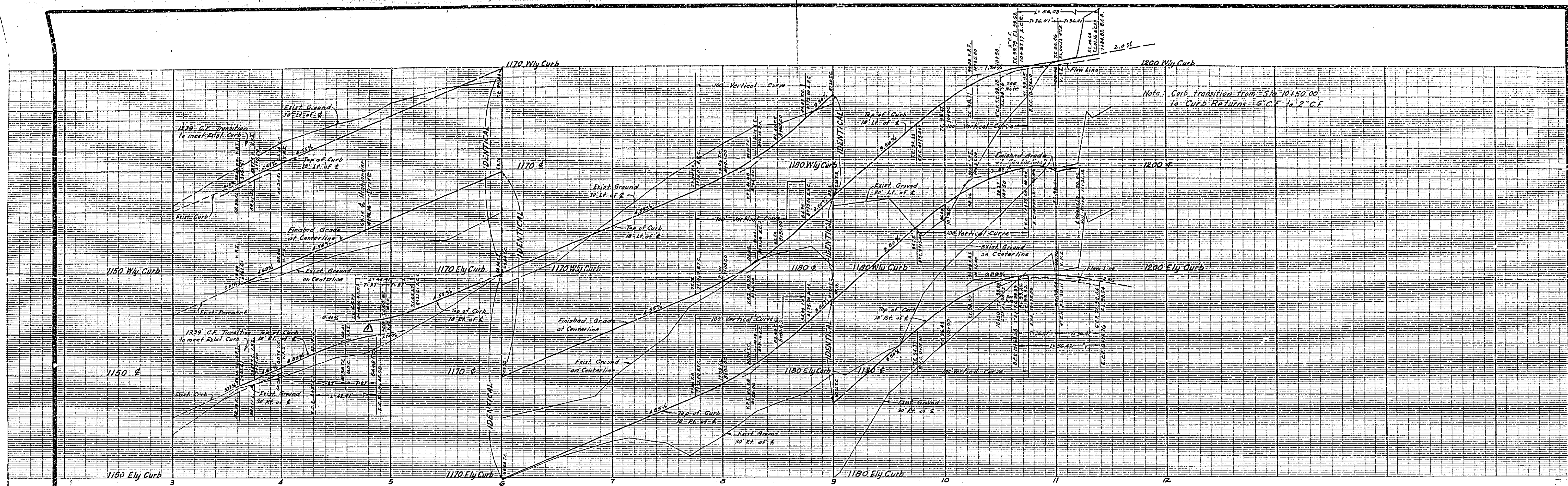
HORIZ. SCALE 1"=40' VERT. SCALE 1"=4'

DESIGNED BY: *[Signature]*
DRAWN BY: *[Signature]*
RECOMMENDED BY: *[Signature]*
ASSISTANT CITY ENGINEER

CHECKED BY: *[Signature]*
DATE: 3-9-64

APPROVED BY: *[Signature]*
DIRECTOR OF PUBLIC WORKS

NO. **R-768**
SHEET **3** OF **3**



TYPICAL SECTION
CELESTE DRIVE
Station 3181.61 to 9+75

Scale: Hor. 1" = 6'
Vert. 1" = 6'

Typical Section Const. Notes
Place 2 1/2" A.C. and sealcoat over 5" 2.5M per General Note
Const. curb & gutter - 6" C.F. (except as noted) - per Riv. City Std. No. 200
Const. property line sidewalk per Riv. City Std. No. 350

T.B.M. "X" on top Flange of Fire Hydrant 25' Wly. & Celeste Drive at Station 3181.61 Elevation 1160.99

REVISIONS	
MARK	DATE DESCRIPTION
Δ	3-10-64 Rev. C.F. & Gutter of Highlander Drive (see note)
Δ	7-9-64 Added J.B.M. Requisite Note with P.M.J. (see note)

FB 945-15

J. F. DAVIDSON-CIVIL ENGINEER
R.E. NO. 892
RIVERSIDE, CALIFORNIA
APPROVED BY *George E. McCarty*, DATE 12/1/63

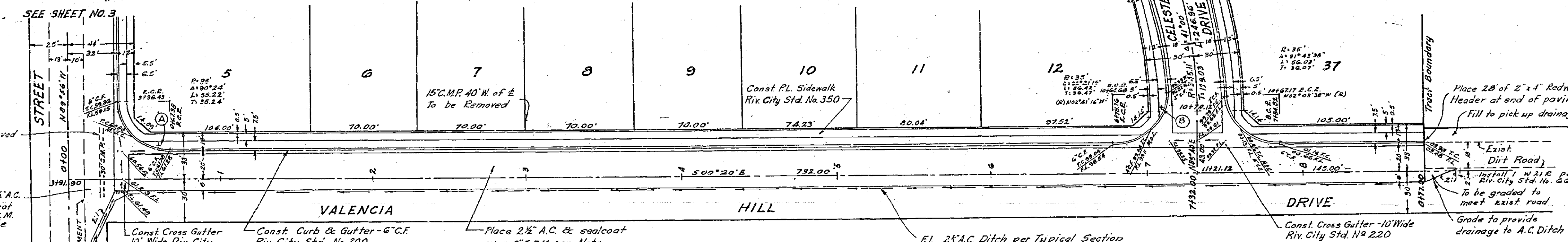
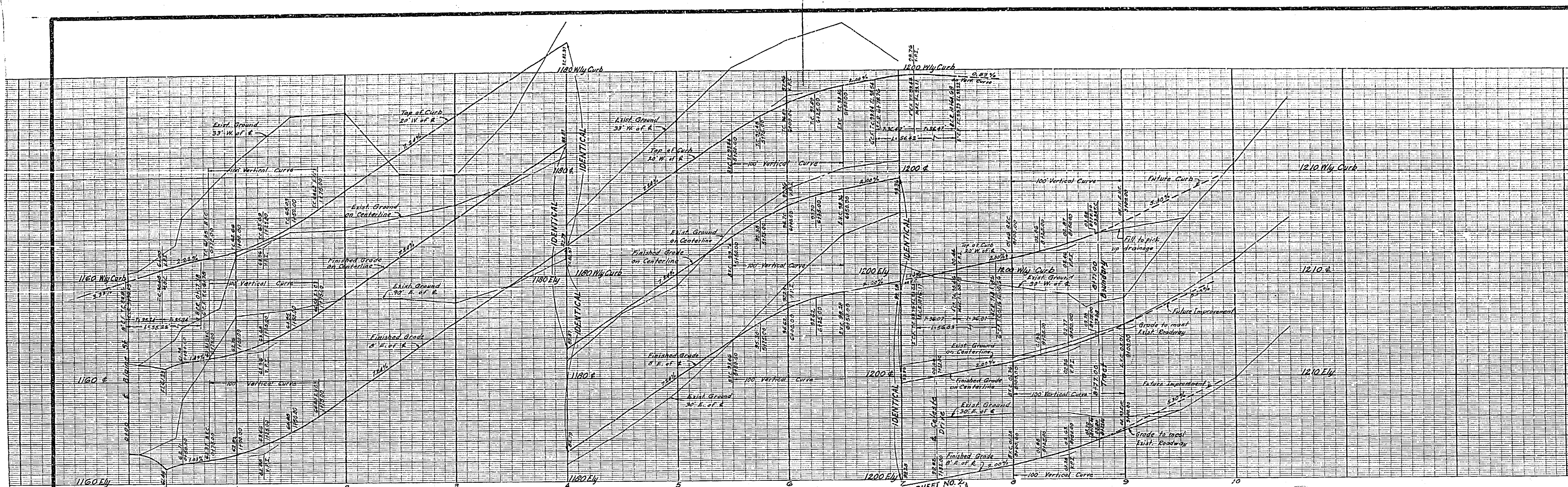
CITY OF RIVERSIDE, CALIFORNIA
DEPARTMENT OF PUBLIC WORKS

STREET PLAN & PROFILE
TRACT 2765
CELESTE DRIVE
HORIZ. SCALE 1" = 40' VERT. SCALE 1" = 4'

DESIGNED BY _____ CHECKED BY *R. J. ...*
DRAWN BY _____ RECOMMENDED BY _____
DATE 3-9-64 ASSISTANT CITY ENGINEER

APPROVED BY *W. M. ...*
Director of Public Works
DATE 3-9-64

NO. **R-768**
SHEET 2 OF 3



Typical Section Const. Notes

- Place 2 1/2" A.C. and sealcoat over 5" Z.B.M. per General Note
- Const. curb & gutter - C.C.F. (except as noted) - per Riv. City Std. No. 200
- Const. properly line sidewalk per Riv. City Std. No. 350
- Const. 2 1/2" A.C. Drain Ditch

Typical Section Const. Notes

- Place 2 1/2" A.C. & sealcoat over 5" Z.B.M. per General Note
- Const. curb & gutter - C.C.F. (except as noted) - per Riv. City Std. No. 200
- Const. properly line sidewalk per Riv. City Std. No. 350
- Const. 2 1/2" A.C. Drain Ditch

Typical Section Const. Notes

- Place 2 1/2" A.C. & sealcoat over 5" Z.B.M. per General Note
- Const. curb & gutter - C.C.F. (except as noted) - per Riv. City Std. No. 200
- Const. properly line sidewalk per Riv. City Std. No. 350
- Const. 2 1/2" A.C. Drain Ditch

Street Name Sign Schedule

A	BLAINE STREET	300
	VALENCIA HILL DRIVE	3200
B	VALENCIA HILL DRIVE	3100
	CELESTE DRIVE	3100
	CELESTE DRIVE	3100
C	HIGHLANDER DRIVE	300

Street Name Signs and Posts to be furnished and installed by the Subdivider per City of Riv. Std. No. 662

- General Notes**
- It shall be the responsibility of the contractor to clear the right of way in accordance with the provisions of law as it affects each utility including irrigation lines and appurtenances and at no cost to the City.
 - Construction shall be in accordance with the City of Riverside, Department of Public Works, Specifications No. 461 and Standard Drawings.
 - Prime coat, seal coat, and paint binder are required.
 - Grading will require a permit under Ordinance No. 3093 for a cut or fill exceeding 100 cubic yards, or a fill over one foot in depth.
 - The City of Riverside will take a soil test to determine the requirement on imported base material after the streets have been prepared to rough grade.
 - Trim edge of existing pavement, where new paving joins existing pavement, to a clean, straight line. Construct match-up paving as shown and overlay paving as directed in the field to produce a smooth crown section.

J. F. DAVIDSON - CIVIL ENGINEER
R.E. NO. 862
RIVERSIDE, CALIFORNIA

APPROVED BY *[Signature]* DATE 11/2/63

CITY OF RIVERSIDE, CALIFORNIA
DEPARTMENT OF PUBLIC WORKS

REVISIONS		
MARK	DATE	DESCRIPTION
2	7/9/64	Added I.B.M. Required note

STREET PLAN & PROFILE
TRACT 2765
VALENCIA HILL DRIVE
HORIZ. SCALE 1" = 40' VERT. SCALE 1" = 4'

DESIGNED BY *[Signature]*
DRAWN BY *[Signature]*
RECOMMENDED BY *[Signature]*
ASSISTANT CITY ENGINEER

CHECKED BY *[Signature]*
DIRECTOR OF PUBLIC WORKS

APPROVED BY *[Signature]*
DATE 3-7-64

NO. R-768
SHEET 1 OF 3

T.B.M. Bolt in P.Pole No. 524166H
at Station 6150 Valencia Hill Drive
Elevation 1207.24

Scale: Hor. 1" = 40'
Vert. 1" = 4'