

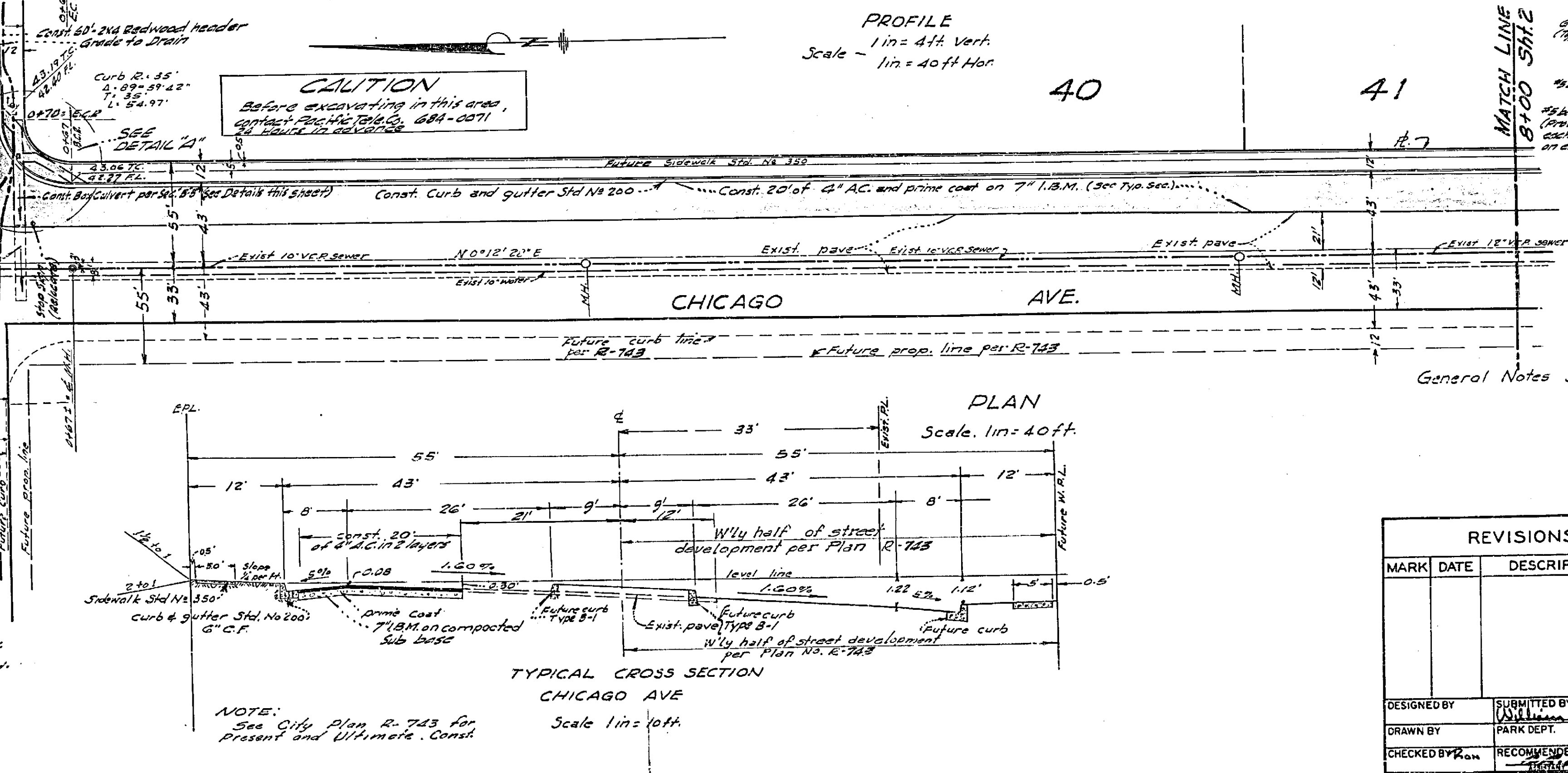
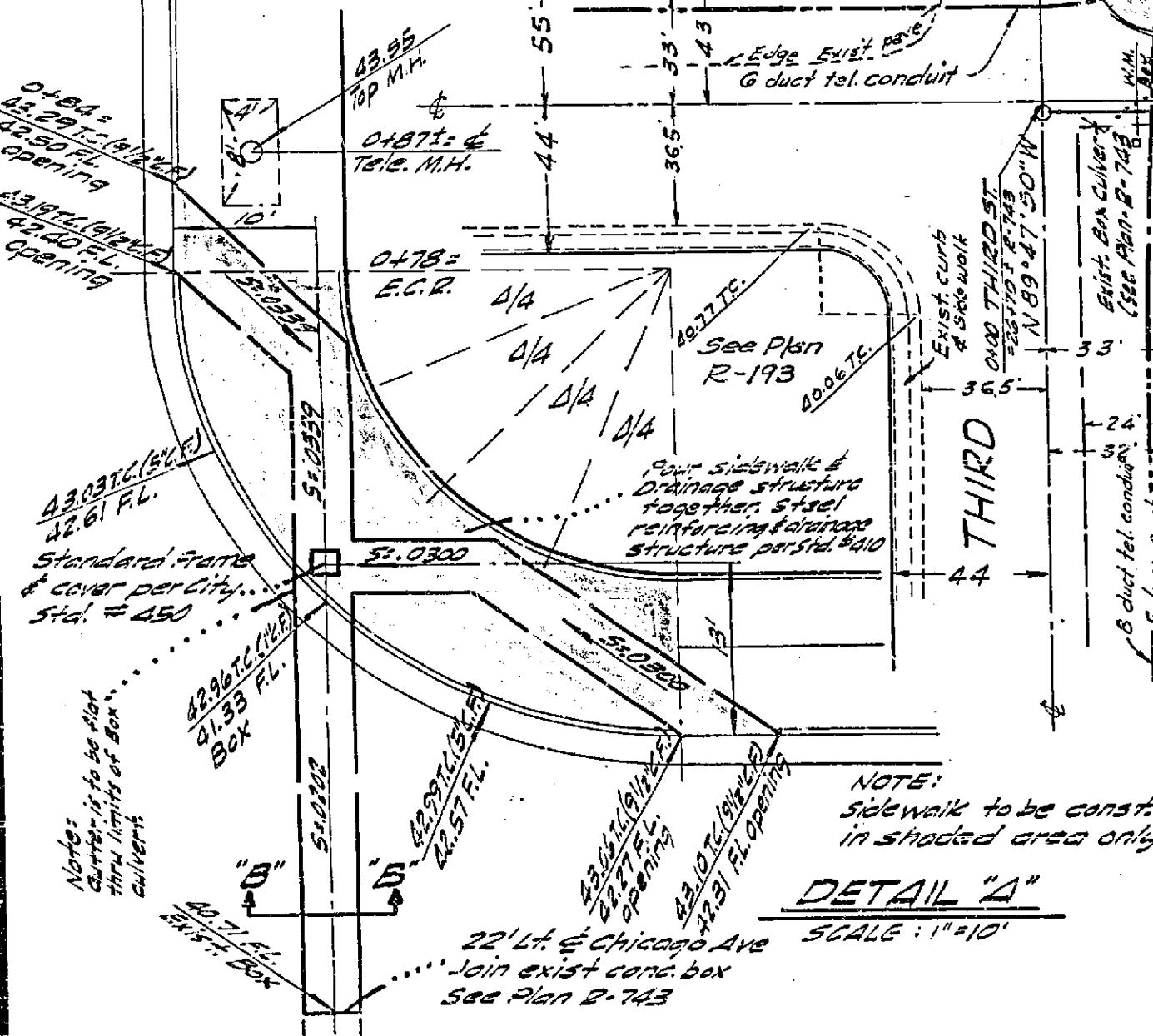
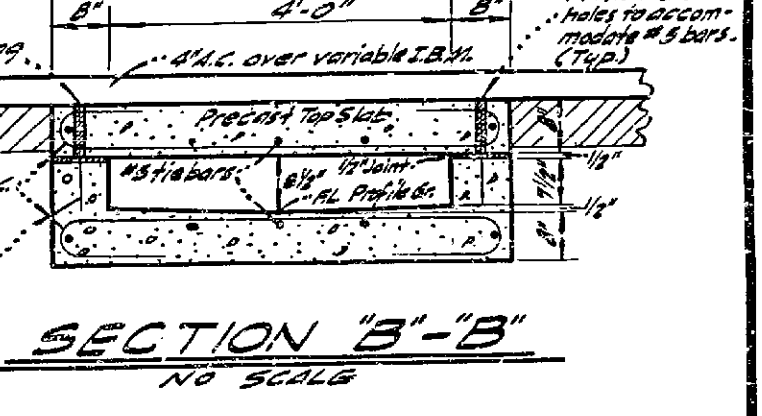
BENCH MARK:
 R.R. Spike in Pole #222671 N.E. Cor.
 Chicago Ave. & Linden St.
 Elev: 952.13

T.B.M.
 Spike & Lead in curb S.E. Cor.
 Chicago Ave. & Third St.
 Elev: 942.37

T.B.M.
 R.R. Nail in lead in curb
 return N.W. cor. Chicago & Third.
 Elev: 940.28

CAUTION
 Before excavating in this area,
 contact Eng. No. 743-0271
 for utility locations.

PROFILE
 1 in = 4 ft Vert.
 Scale - 1 in = 40 ft Hor.



General Notes See Sheet N# 2

CRAWLEY & HAWKINS
 SURVEYORS AND ENGINEERS
 Riverside, California
 Approved: *George O. Crawley* R.E. No. 9455 Date 10-23-62

REVISIONS		
MARK	DATE	DESCRIPTION

CITY OF RIVERSIDE, CALIFORNIA
 DEPARTMENT OF PUBLIC WORKS

RIVERSIDE CITY SCHOOL
 CHICAGO AVENUE
 BETWEEN THIRD ST. & LINDEN ST.

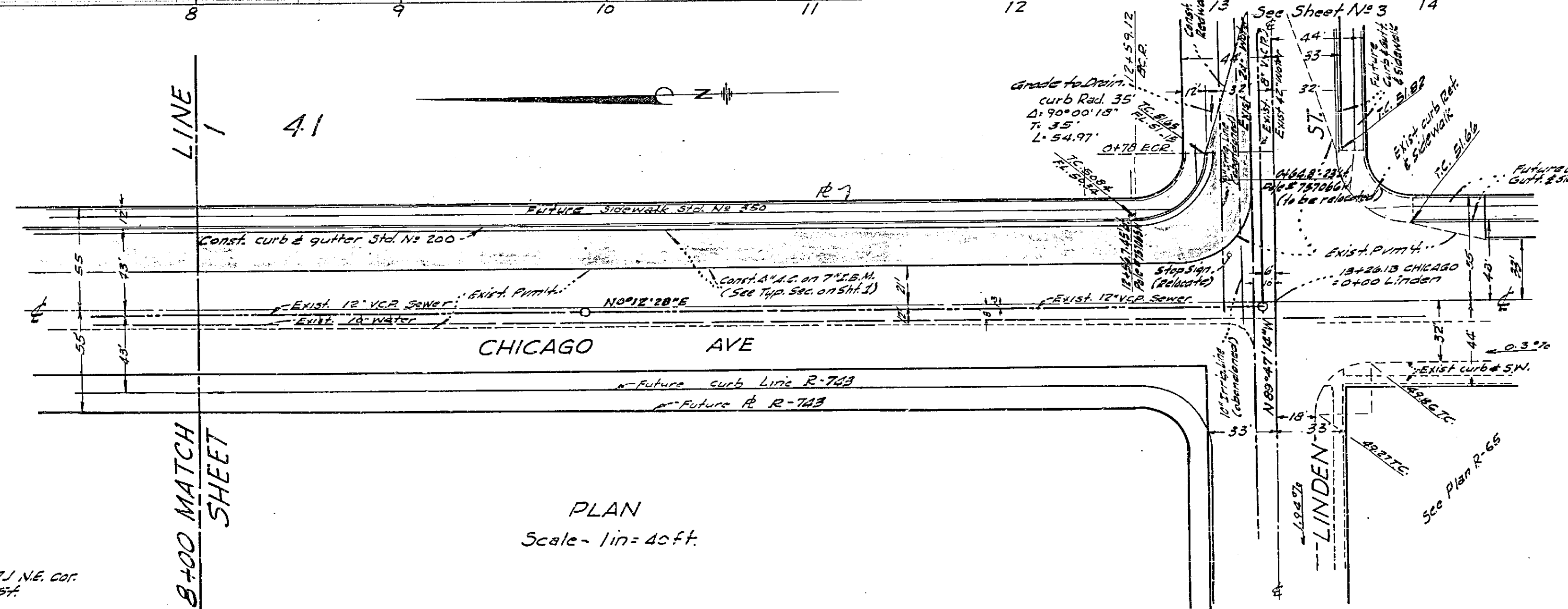
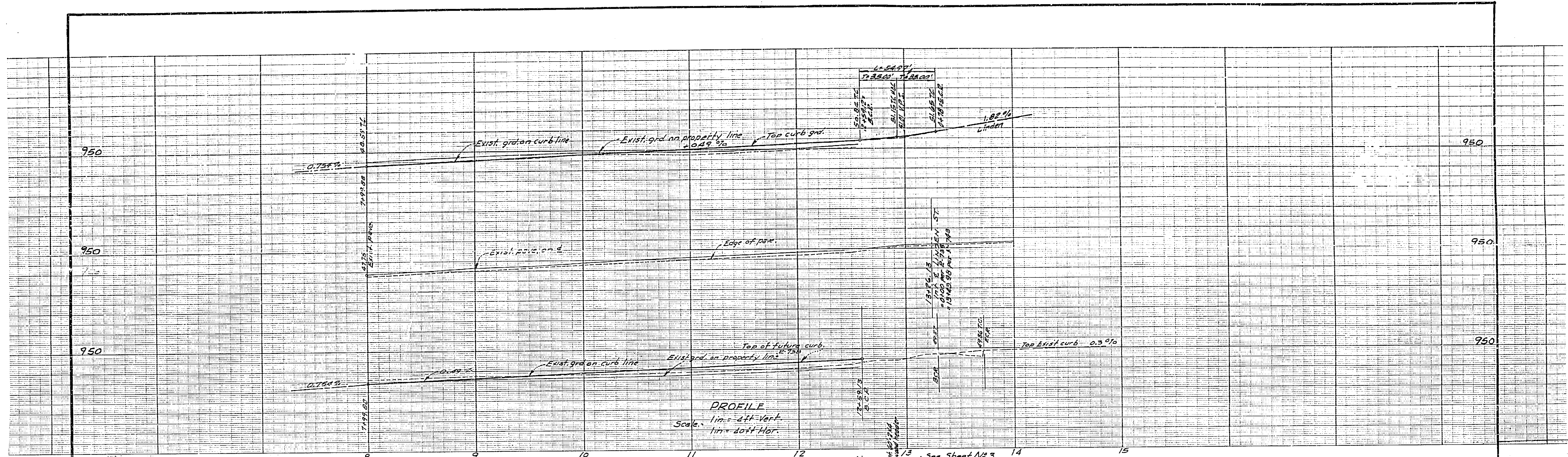
DESIGNED BY: *William D. Dardinger*
 DRAWN BY: *William D. Dardinger*
 CHECKED BY: *John*

SUBMITTED BY: *William D. Dardinger*
 PARK DEPT. TRAFFIC DIV.
 RECOMMENDED BY: *John*
 HIGHWAY DIV.

APPROVED BY: *George O. Crawley*
 DIRECTOR OF PUBLIC WORKS

PROJ. NO. **R-775**
 SHEET **L OF 2**

DATE **9-17-64**



- GENERAL NOTES**
1. The contractor is required to take due precautionary measures to protect the utilities or structures shown and any other utilities or structures on the site. It shall be the contractor's responsibility to notify the owners of the utilities or structures concerned before starting work.
 2. All work and materials shall comply with the specifications No 401 and standards of the City of Riverside Dept. of Public Works.
 3. Utilities to be relocated by Utility Company or department involved.
 4. Trees within construction area to be removed by contractor as shown, or relocate as directed by the PARK DEPT.
 5. Abandoned irrigation lines on Linden street to be crushed.
 6. It shall be the responsibility of the contractor to clear the right of way in accordance with the provisions of law as it affects each utility including irrigation lines and appurtenances and at no cost to the city.
 7. Prime coat, seal coat, and joint binder are required.
 8. Grading will require a permit under Ordinance 3093 for a cut or fill exceeding 100 cubic yards, or a fill over one foot in depth.

BENCH MARKS
 R.P. Spike in Pole #22261 NE. cor.
 Chicago Ave. & Linden St.
 ELEV: 942.13

T.B.M.
 Spike & lead in curb S.E. cor.
 Chicago Ave. & Third St.
 ELEV: 942.37

T.B.M.
 Pk. nail in lead in curb return
 S.W. cor. Linden & Chicago.
 ELEV: 942.54

PLAN
 Scale - 1/4" = 40 ft.

J.O. 682
CRAWLEY & HAWKINS
 SURVEYORS AND ENGINEERS
 Riverside, California
 Approved: *George O. Crawley* Field Bk. 22, 1448
 O.E. No. 2455 Date: 10-23-64

REVISIONS		CITY OF RIVERSIDE, CALIFORNIA DEPARTMENT OF PUBLIC WORKS
MARK	DATE	
		RIVERSIDE CITY SCHOOL CHICAGO AVENUE BETWEEN THIRD ST. & LINDEN ST.
DESIGNED BY	APPROVED BY	PROJ. NO.
DRAWN BY	RECOMMENDED BY	R-775
CHECKED BY	DATE	9-17-64 SHEET 2 OF 6

MISSING

MISSING

MISSING

MISSING