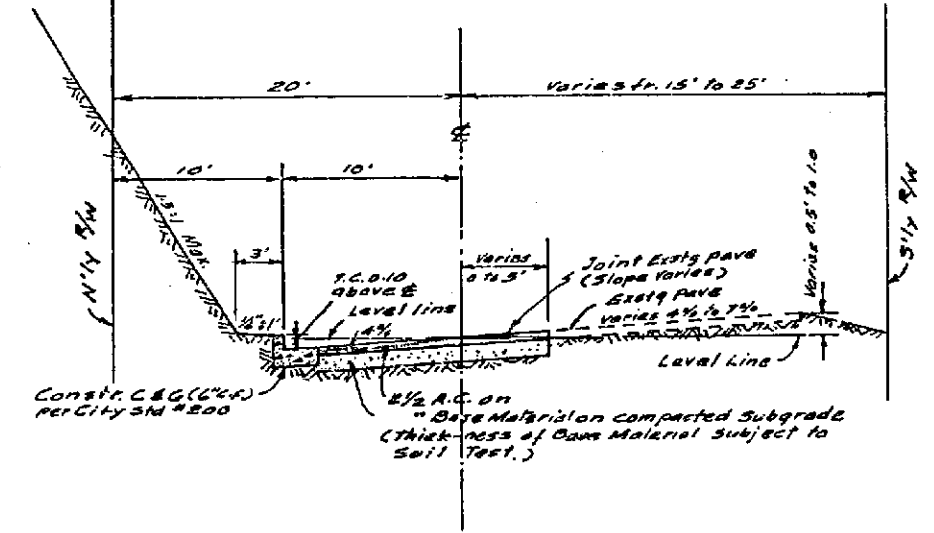
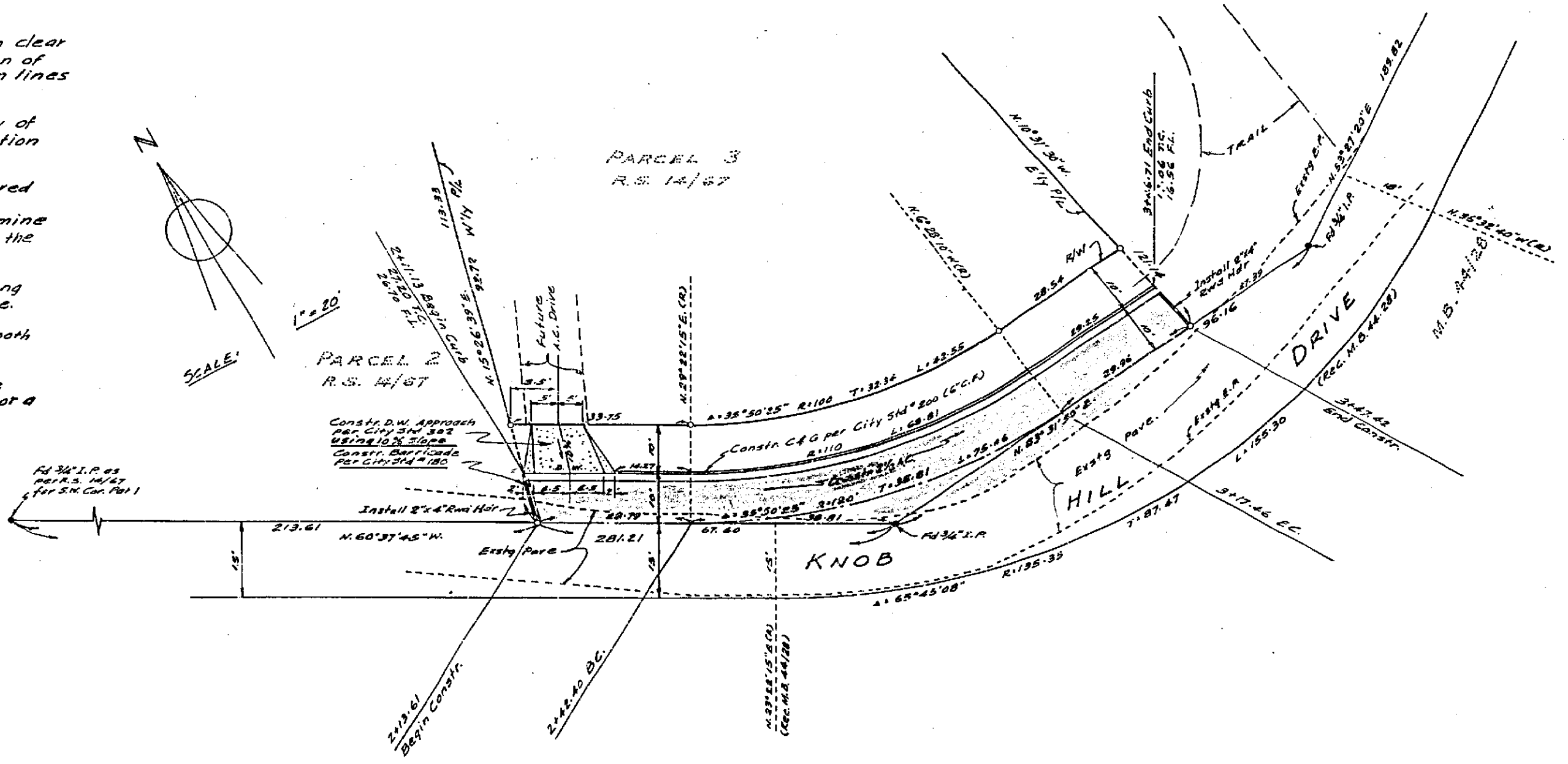


PROFILE	DATE
NO. 277	
NO. 278	
NO. 279	
NO. 280	
NO. 281	
NO. 282	
NO. 283	
NO. 284	
NO. 285	
NO. 286	
NO. 287	
NO. 288	
NO. 289	
NO. 290	
NO. 291	
NO. 292	
NO. 293	
NO. 294	
NO. 295	
NO. 296	
NO. 297	
NO. 298	
NO. 299	
NO. 300	

- GENERAL NOTES**
1. It shall be the responsibility of the Contractor to clear the Right of Way in accordance with the provision of Law as it affects each utility including irrigation lines and appurtenances and at no cost to the City.
  2. Construction shall be in accordance with the City of Riverside, Department of Public Works, Specification No. 461 and Standard Drawings.
  3. Prime Coat, Seal Coat, & Paint Binder are required.
  4. The City of Riverside will take a soil test to determine the requirement on Imported Base Material after the street has been prepared to rough grade.
  5. Trim edge of Existing Pavement, where new paving joins existing pavement, to a clean, straight line. Construct match up paving as shown and overlay paving as directed in the field to produce a smooth crown section.
  6. Grading will require a permit under Ordinance 3093 for a cut or fill exceeding 100 cubic yards, or a fill over one foot in depth.



TYPICAL SECTION  
 KNOB HILL DRIVE  
 Sta. 2+13.61 to Sta. 2+27.42  
 Scale: 1"=20'  
 Vert. 1"=5'

HUGH M. GALLAHER  
 Riverside Civil Engineer  
 California  
 Approved by *John M. Coit* 2-6-64  
 D.P.W. 10393

REVISIONS		
MARK	DATE	DESCRIPTION

CITY OF RIVERSIDE CALIFORNIA  
 DEPARTMENT OF PUBLIC WORKS

PARCEL 3, R.S. 14/57

STREET PLAN & PROFILE  
 KNOB HILL DRIVE  
 Sta. 2+13.61 to Sta. 3+27.42

DESIGNED BY	CHECKED BY	APPROVED BY
DRAWN BY	<i>W. J. ...</i>	<i>H. M. Gallaher</i>
RECOMMENDED BY	ASSISTANT CITY ENGINEER	DIRECTOR OF PUBLIC WORKS

DATE 4-23-64 SHEET 1 OF 1

BENCHMARK "X" Mark Top N/4 Flange in Fire Hydrant Ely and Imp. Sunset Dr. Ely. 1065-49 RR 8/7/55

PLAN	DATE
NO. 277	
NO. 278	
NO. 279	
NO. 280	
NO. 281	
NO. 282	
NO. 283	
NO. 284	
NO. 285	
NO. 286	
NO. 287	
NO. 288	
NO. 289	
NO. 290	
NO. 291	
NO. 292	
NO. 293	
NO. 294	
NO. 295	
NO. 296	
NO. 297	
NO. 298	
NO. 299	
NO. 300	