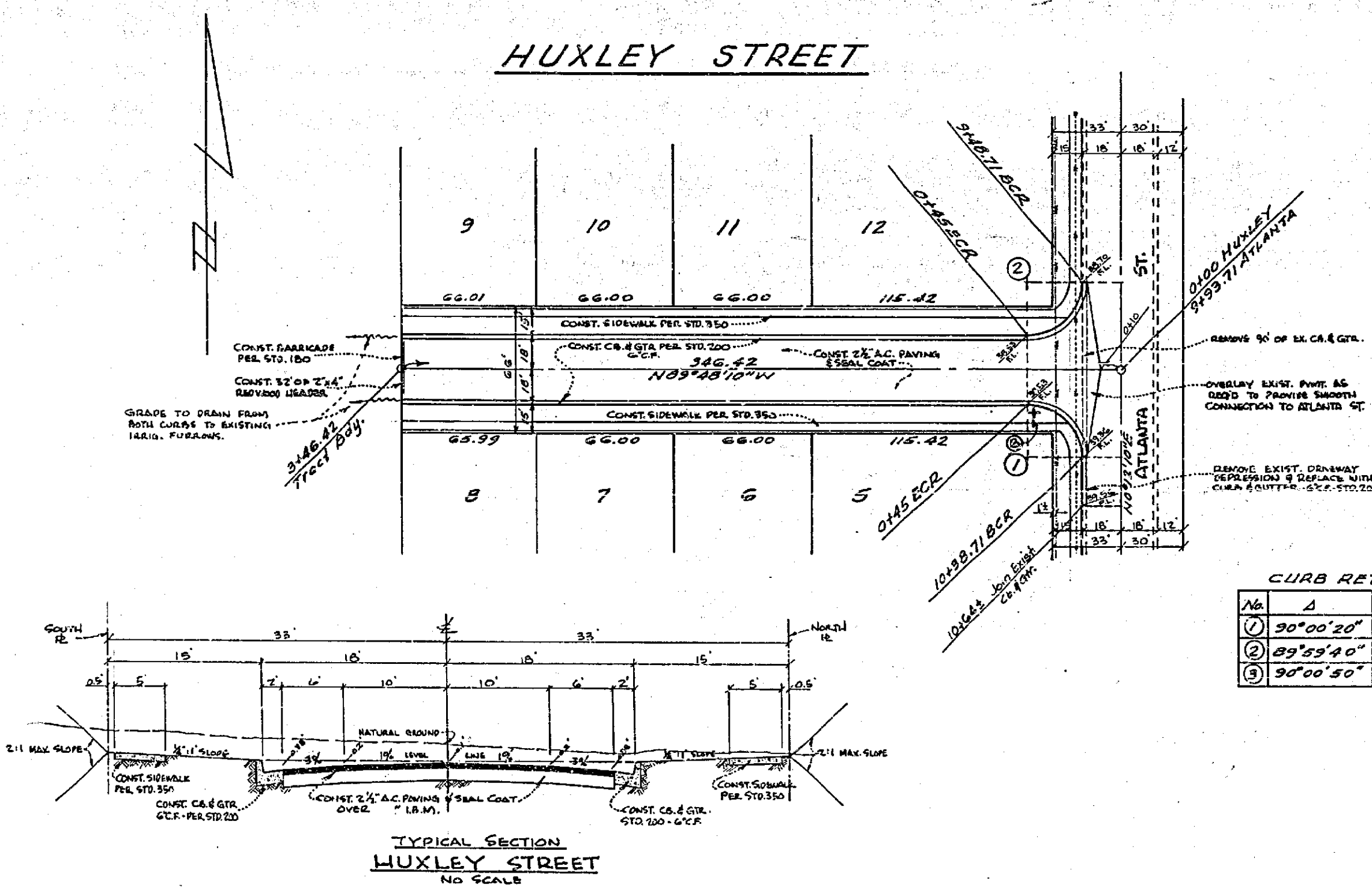


PROFILE	SHEET NO.	DATE
NO. 1	1	
NO. 2	2	
NO. 3	3	
NO. 4	4	
NO. 5	5	
NO. 6	6	
NO. 7	7	
NO. 8	8	
NO. 9	9	
NO. 10	10	
NO. 11	11	
NO. 12	12	
NO. 13	13	
NO. 14	14	
NO. 15	15	
NO. 16	16	
NO. 17	17	
NO. 18	18	
NO. 19	19	
NO. 20	20	

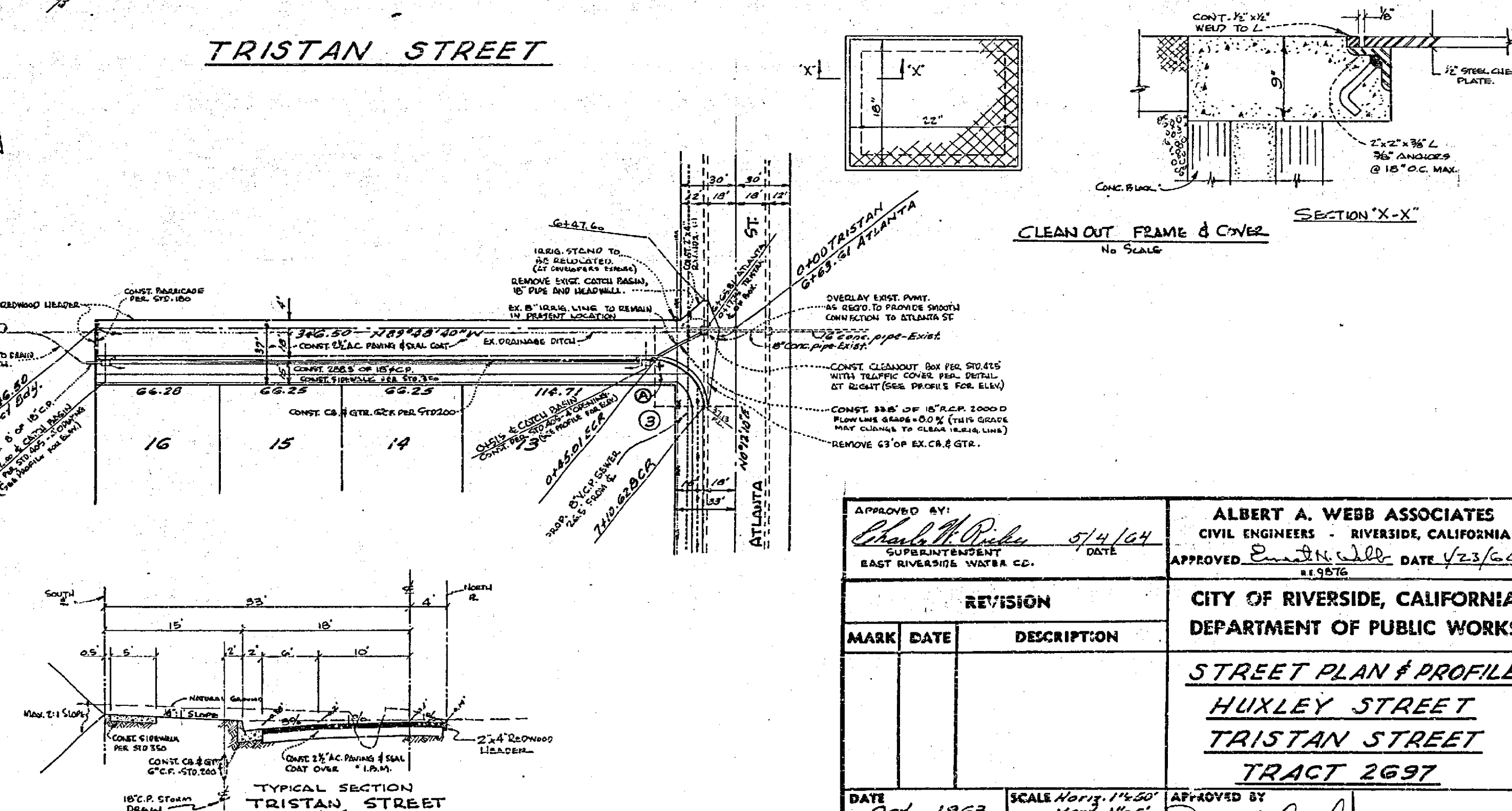
SCALE
HORIZ. 1"=50'
VERT. 1"=5'

BENCH MARK: POINT 2 WASHBURN IN N.W. COR. BETHUNE MASSACHUSETTS & ATLANTA. ELEV. 943.07



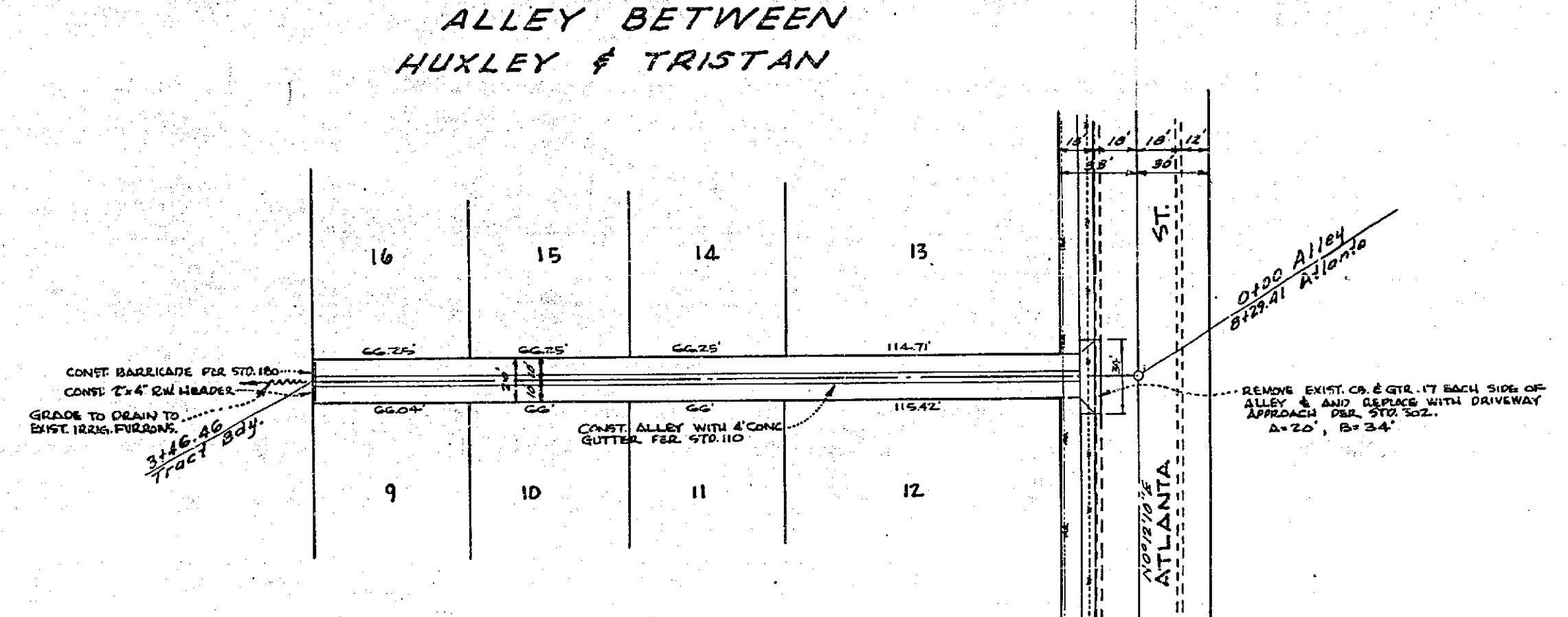
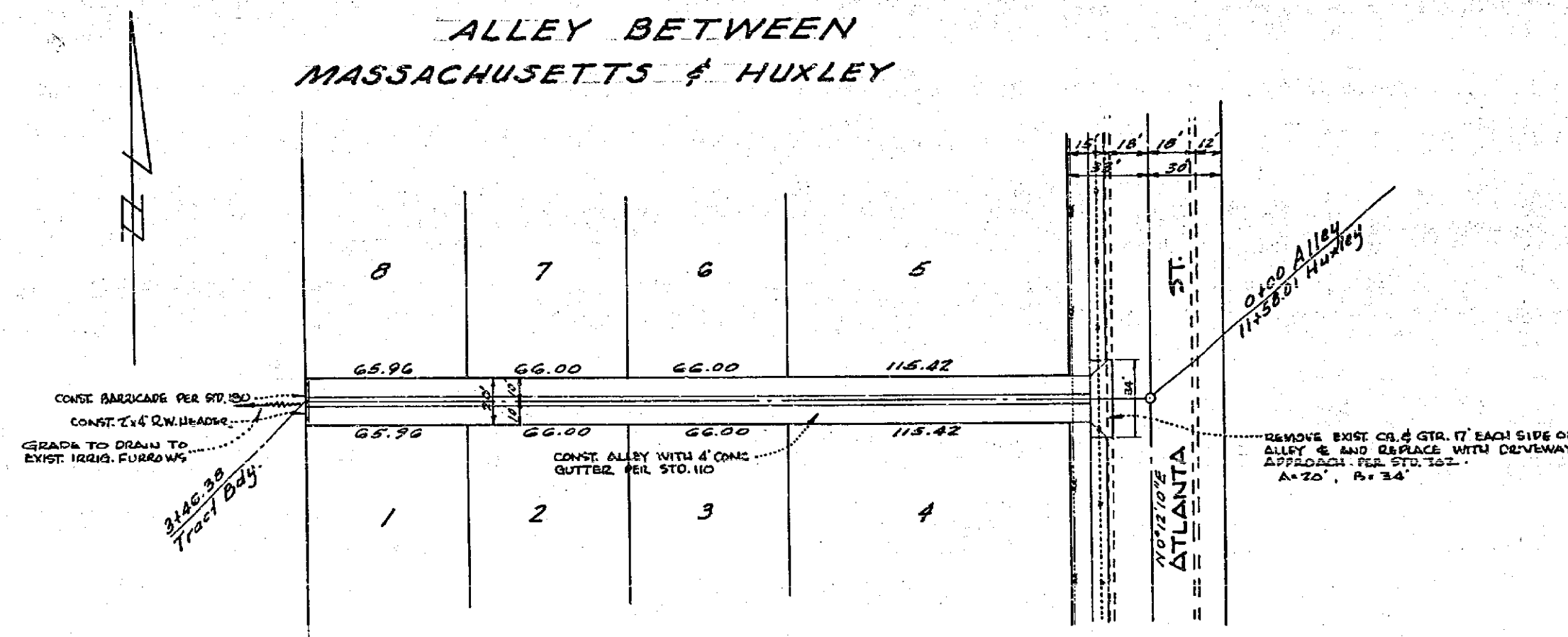
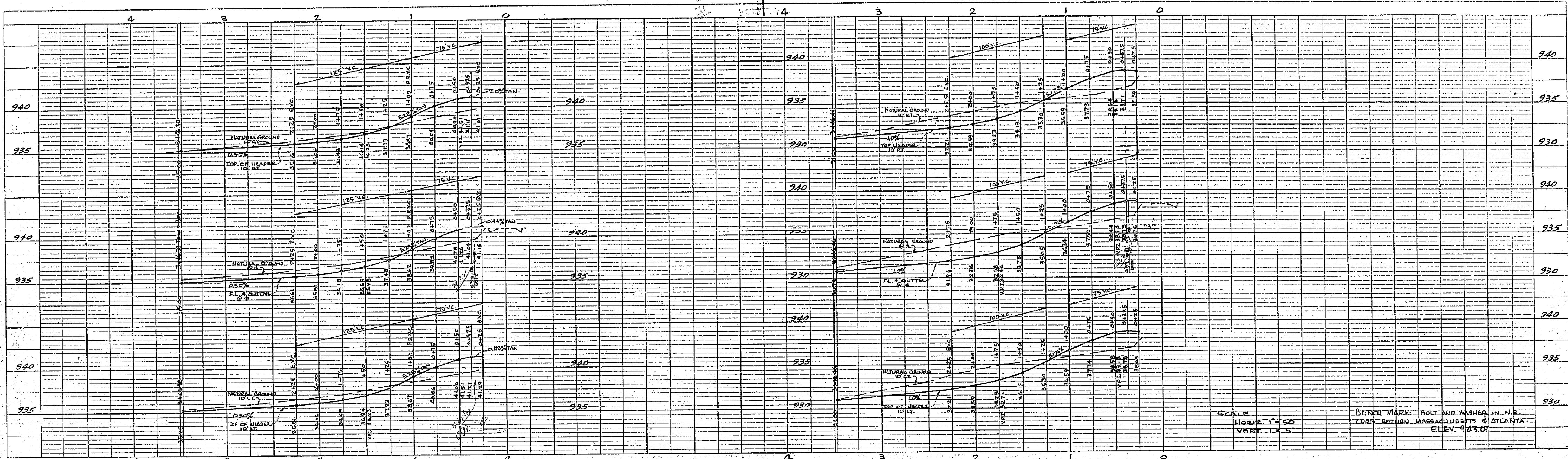
CURB RETURN DATA

No.	Δ	R. T.	L.
1	90°00'20"	27	27.00' 42.41'
2	89°59'40"	27	27.00' 42.41'
3	90°00'50"	27	27.01' 42.42'



APPROVED BY: <i>Charles H. P... 5/14/64</i> DATE		ALBERT A. WEBB ASSOCIATES CIVIL ENGINEERS - RIVERSIDE, CALIFORNIA APPROVED: <i>Emilio J. ...</i> DATE 4/23/64 E.L.S.B.T.C.	
CITY OF RIVERSIDE, CALIFORNIA DEPARTMENT OF PUBLIC WORKS			
STREET PLAN & PROFILE HUXLEY STREET TRISTAN STREET TRACT 2697			
DATE Oct. 1963	SCALE HORIZ. 1"=50' VERT. 1"=5'	APPROVED BY <i>Emilio J. ...</i>	NO. R-782
DRAWN REC	W.B. G3-144	CHECKED BY <i>W.B. ...</i>	F.B. 477
DATE 6-26-64		SHEET 2 OF 3	

PLAN	SHEET NO.	DATE
NO. 1	1	
NO. 2	2	
NO. 3	3	
NO. 4	4	
NO. 5	5	
NO. 6	6	
NO. 7	7	
NO. 8	8	
NO. 9	9	
NO. 10	10	
NO. 11	11	
NO. 12	12	
NO. 13	13	
NO. 14	14	
NO. 15	15	
NO. 16	16	
NO. 17	17	
NO. 18	18	
NO. 19	19	
NO. 20	20	



FOR TYPICAL SECTION OF ALLEYS SEE STD. DWG. NO. 110

ALBERT A. WEBB ASSOCIATES
 CIVIL ENGINEERS - RIVERSIDE, CALIFORNIA
 APPROVED: *[Signature]* DATE 1/23/64

REVISION		DESCRIPTION
MARK	DATE	

CITY OF RIVERSIDE, CALIFORNIA
 DEPARTMENT OF PUBLIC WORKS

ALLEY PLAN & PROFILE
 TRACT NO. 2697

DATE JAN. 1964 SCALE 1"=50'
 DRAWN *[Signature]* W.O. 63-144
 CHECKED *[Signature]* W.B. 477

APPROVED BY *[Signature]* NO. R-782
 DIRECTOR OF PUBLIC WORKS
 DATE 6-26-64 SHEET 3 OF 3

PROFILE	SHEET NO.	DATE
NO. 100	63-144	1/23/64

PLAN	SHEET NO.	DATE
NO. 100	63-144	1/23/64