

**CURB RETURN**

No.	A	R	T	L
1	18° 57' 15"	23'	24.99	39.25
2	90°	25'	25.00	39.27

**Quantity Estimate**

Type 12A Curb - 6" Curb Face	1,225 lin. ft.
Type 12A Curb & Gutter	2,723 lin. ft.
2 1/2" Plant Mix Surface	83,231 sq. ft.
Std. #14 Cross Gutter	475 sq. ft.
4" Imported Base Material	1,017 cu. yds.
Barricade Co. Std. No. 27	2 req.
Excavation	6,500 cu. yds.

Riverson Approved Sept. 14, 1960  
 By Chas. Stent Deputy

Approved August 2, 1960  
 Riverside County Road Commissioner  
 By Chas. Stent Deputy

**NOTES:**  
 PAVEMENT WIDENING TO MEET CURB TO BE DONE BY COUNTY FORCES. SUBDIVIDER WILL GRADE, PLACE BASE MATERIAL, AND LEAVE IN A CONDITION SAFE FOR TRAFFIC.  
 ANY RELOCATION OF EXISTING UTILITIES TO CLEAR THE PROPOSED WORK SHALL BE THE RESPONSIBILITY OF THE SUBDIVIDER.  
 SUBDIVIDER WILL INSTALL STREET NAME SIGNS CONFORMING TO COUNTY STANDARD NO. 28 AS DIRECTED.  
 ALL WORK SHALL CONFORM TO THE REQUIREMENTS OF THE RIVERSIDE COUNTY ROAD DEPARTMENT SPECIFICATIONS FOR THE IMPROVEMENT OF SUBDIVISION STREETS, Co. Ord. 461, DATED 1953.

REVISIONS	DATE	BY
Big Springs Road Shortened	9-14-60	REC

**TRACT NO. 2079**

**STREET PLAN & PROFILE**

**BIG SPRING ROAD**

SCALE 1"=50'

DATE 5-5-60

DRAWN 2, D

TRACED

CHECKED

F.R. 367/45

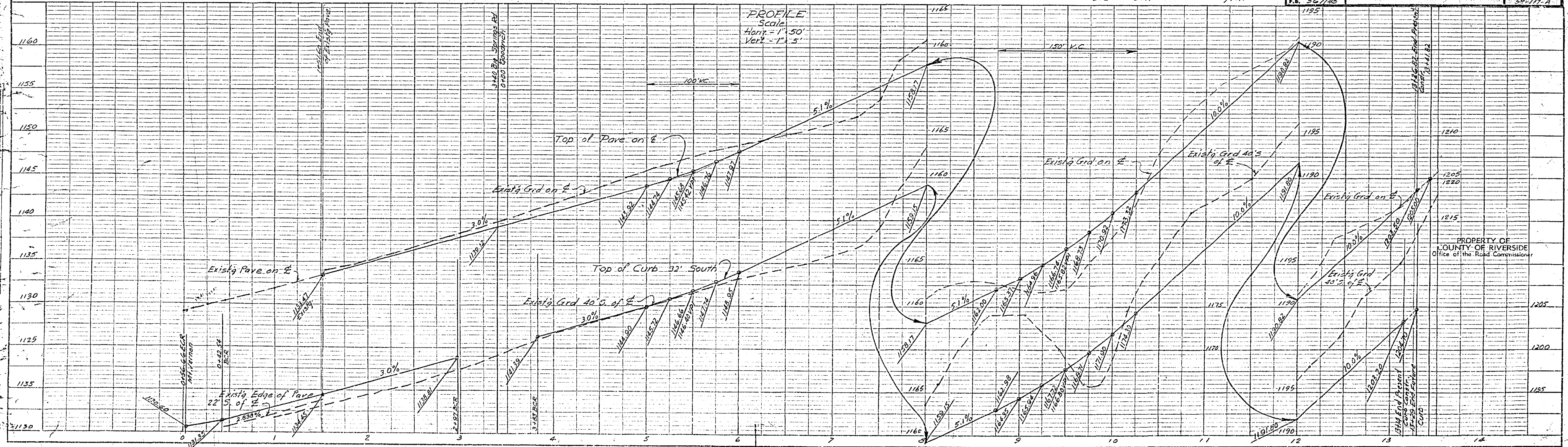
ALBERT A. WEBB ASSOCIATES  
 CIVIL ENGINEERS  
 211 W. 100th St.  
 RIVERSIDE, CALIFORNIA 92504

PROJ. 59-117

SHEET 7

OF 3 SHEETS

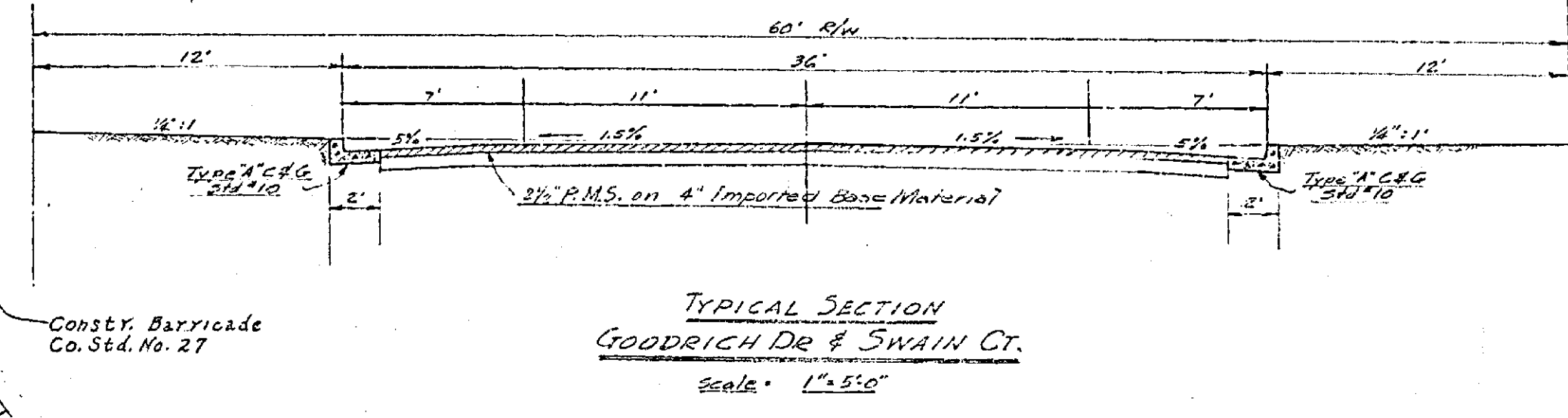
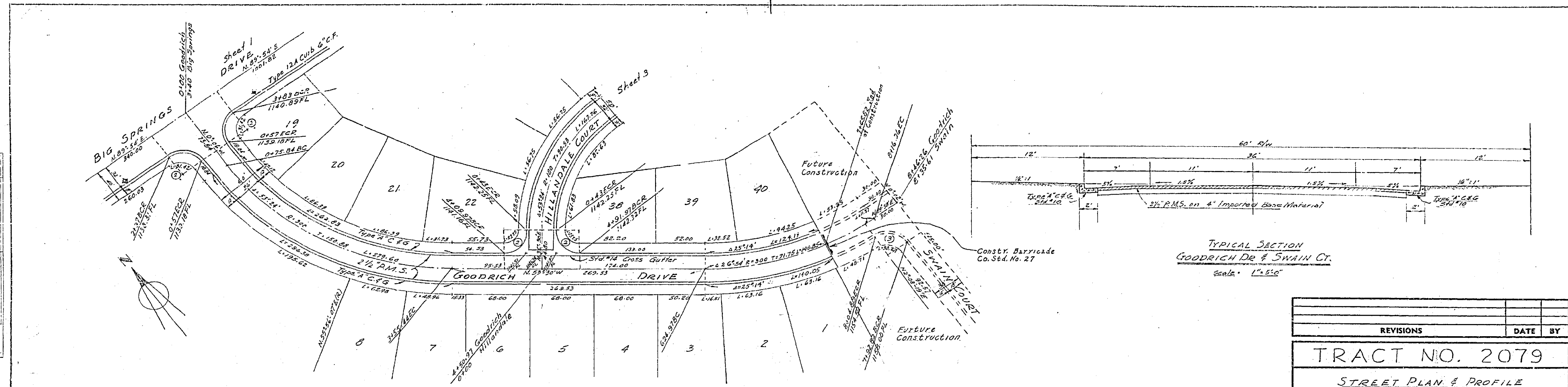
DWG. NO. 59-117-A



R-187 740



PLAN	REVISIONS
NOTE BOOK	REVISIONS CHECKED
BY	DATE
NO.	BY



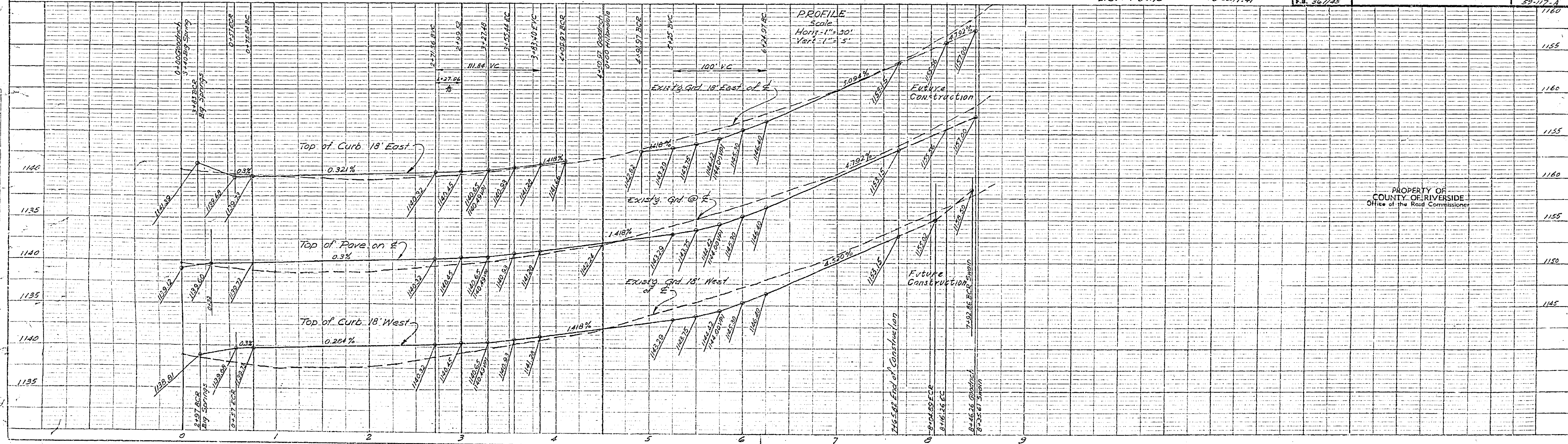
CURB RETURN DATA

No.	Δ	R	T	L
2	90°	25	25.00	39.27
3	87°45'47"	23	24.07	34.32

REVISIONS		DATE	BY
TRACT NO. 2079			
STREET PLAN & PROFILE			
GOODRICH DRIVE			
SCALE 1"=50'	DATE 5-25-60	DRAWN G.D.	TRACED
CHECKED	F.S. 367/45	ALBERT A. WEBB ASSOCIATES CIVIL ENGINEERS	RIVERSIDE CALIFORNIA
W.O. 57-117	SHEET 2	OF 3 SHEETS	DWG. NO. 57-117-A

Bench Mark: 272 Inter Broadbent & Mt. Vernon.  
 Elev. 1164.75 FB 367/44

PROFILE	REVISIONS
NOTE BOOK	REVISIONS CHECKED
BY	DATE
NO.	BY



PROPERTY OF  
 COUNTY OF RIVERSIDE  
 Office of the Road Commissioner

R-787 740 V