

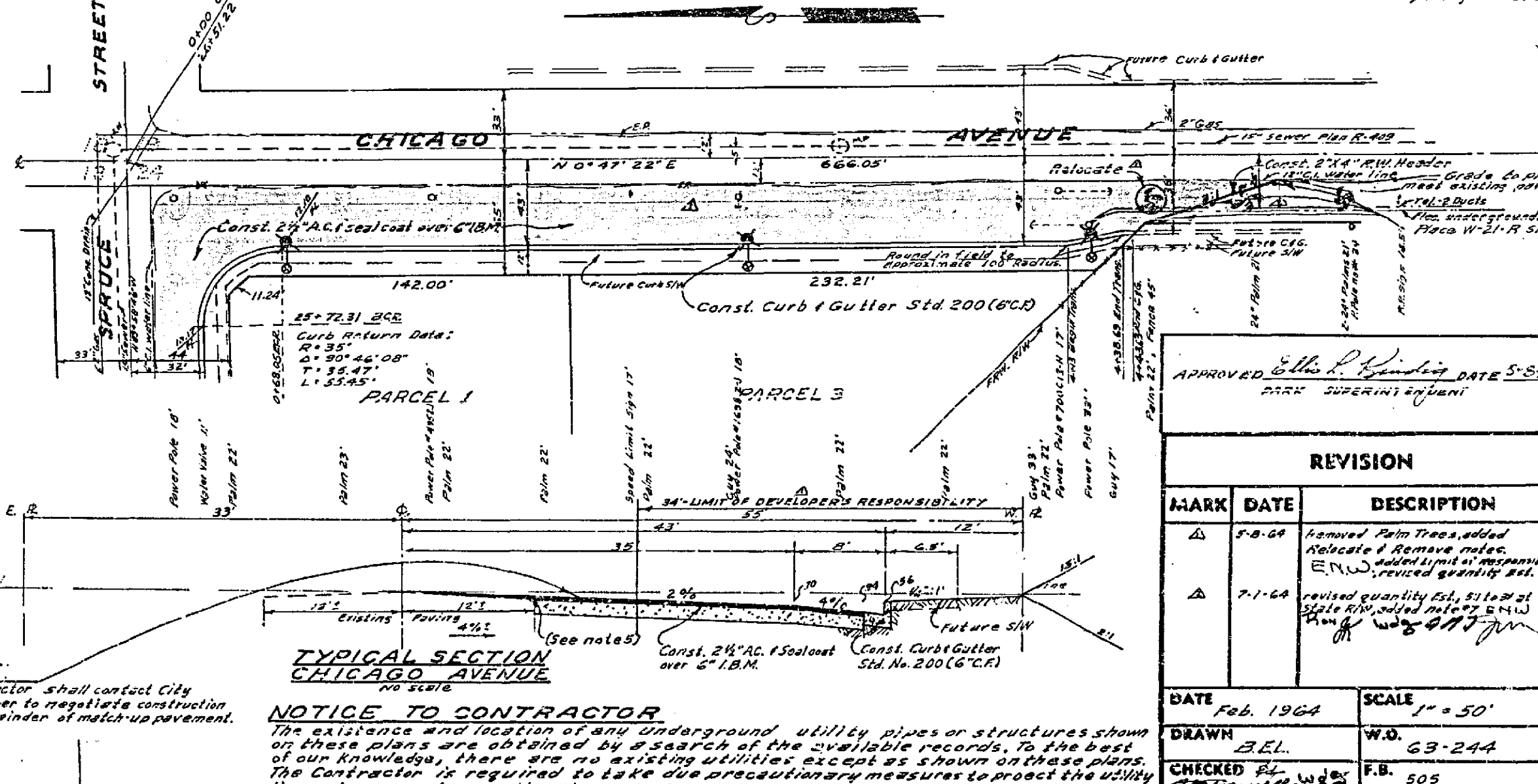
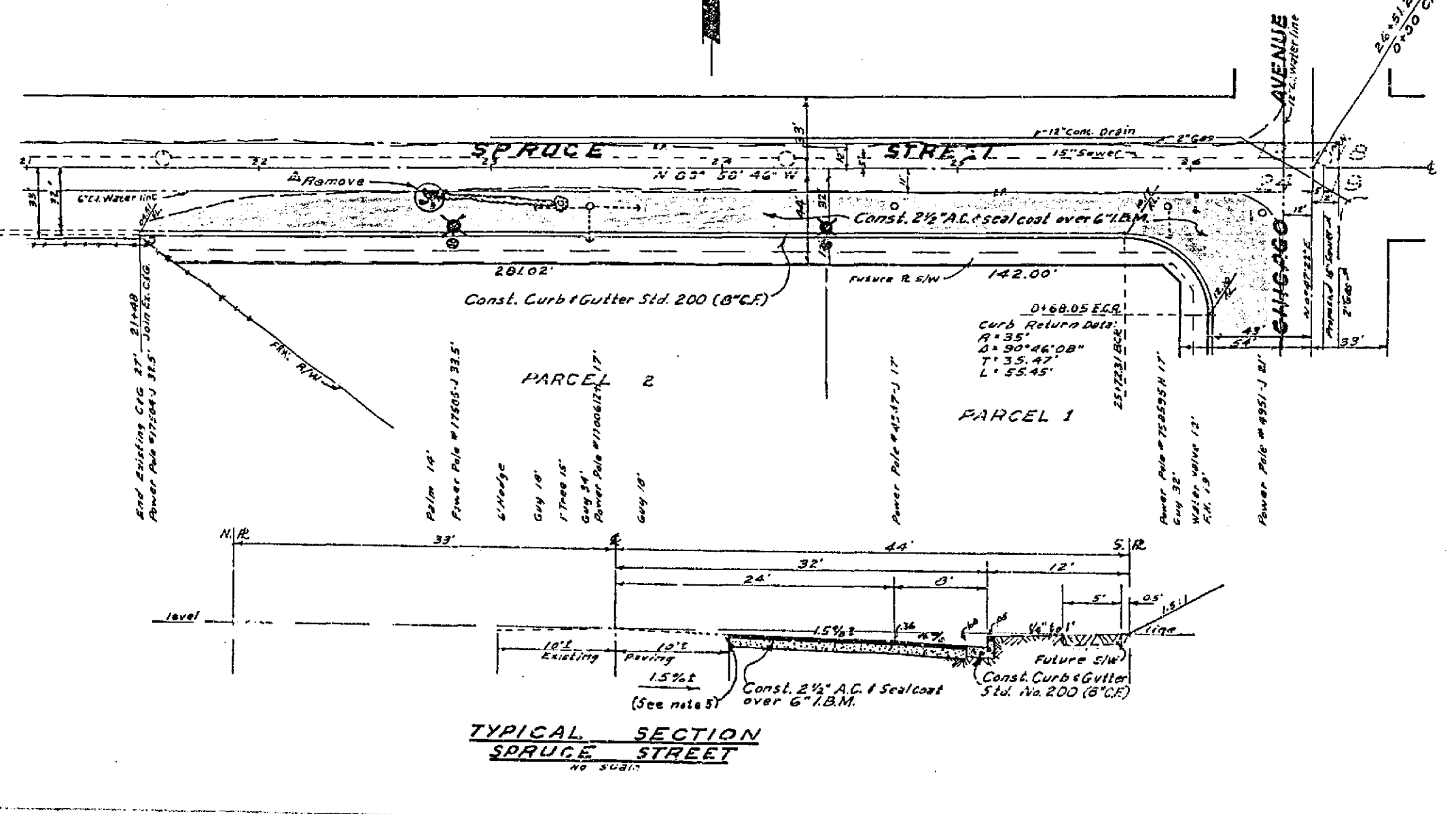


QUANTITY ESTIMATE

Curb & Gutter Standard No. 200 (G.C.C.)	404 LF.
2 1/2" A.C. Seal Coat	17,062 S.F. Δ
Curb & Gutter Standard No. 200 (G.C.C.)	454 LF.
2" x 4" Redwood Header	100 LF.
W-21-R	3 EA.
Imported Base Material (6")	316 CY Δ
2 1/2" A.C. Seal Coat (by City)	3,950 S.F. Δ
Imported Base Material (by City)	73 CY Δ

BENCH MARK: Elev. 911.765
 RR Spike in RR # 4390 J 50' N of E of Spruce St.
 on East Side of Chicago Ave.

- GENERAL NOTES:**
- It shall be the responsibility of the contractor to clear the right of way in accordance with the provisions of law as it affects each utility including irrigation lines and appurtenances and at its cost to the City.
 - Construction shall be in accordance with the City of Riverside, Department of Public Works, Specifications No. 461 and Standard Drawings.
 - Prime coat, seal coat, and paint under are required.
 - Grading will require a permit under Ordinance 3053 for a cut or fill exceeding 100 cubic yards, or a fill over one foot in depth.
 - Trim edge of existing pavement, where new paving joins existing pavement, to a clean, straight line. Construct match-up paving as shown and verify paving as directed in the field to produce a smooth crown section.
 - Trees to be removed or relocated as directed by the Park Superintendent.
 - Indicates Mercury Vapor Luminaire to be installed on wood pole by the utilities Dept. upon payment of \$125.00.
 - Contractor must obtain Div. of Highway Encroachment permit for construction in State R/W.



NOTE:
 Contractor shall contact City Engineer to regulate construction of remainder of match-up pavement.

NOTICE TO CONTRACTOR:
 The existence and location of any underground utility pipes or structures shown on these plans were obtained by research of the available records. To the best of our knowledge, there are no existing utilities except as shown on these plans. The Contractor is required to take the precautionary measures to protect the utility lines shown and any other lines not of record or not shown on these plans.

APPROVED: <i>[Signature]</i> DATE 5-5-64 <small>CITY ENGINEER</small>		ALBERT A. WEBB ASSOCIATES CIVIL ENGINEERS - RIVERSIDE, CALIFORNIA	
APPROVED: <i>[Signature]</i> DATE 3/11/64 <small>CITY ENGINEER</small>		CITY OF RIVERSIDE, CALIFORNIA DEPARTMENT OF PUBLIC WORKS	
REVISION			
MARK	DATE	DESCRIPTION	
Δ	7-8-64	Revised Plans, added Relocate & Remove notes, E.T.W., revised quantity est.	
Δ	7-1-64	revised quantity est., site plan, E.T.W., revised quantity est.	
DATE Feb. 1964		SCALE 1" = 50'	
DRAWN E.E.L.		W.D. G3-244	
CHECKED <i>[Signature]</i>		F.B. 305	
APPROVED BY <i>[Signature]</i>		DIRECTOR OF PUBLIC WORKS	
DATE 4-29-64		NO. P-793	
		SHEET 1 OF 1	



PROFILE

DATE	NO.	BY	CHECKED

PLAN

DATE	NO.	BY	CHECKED