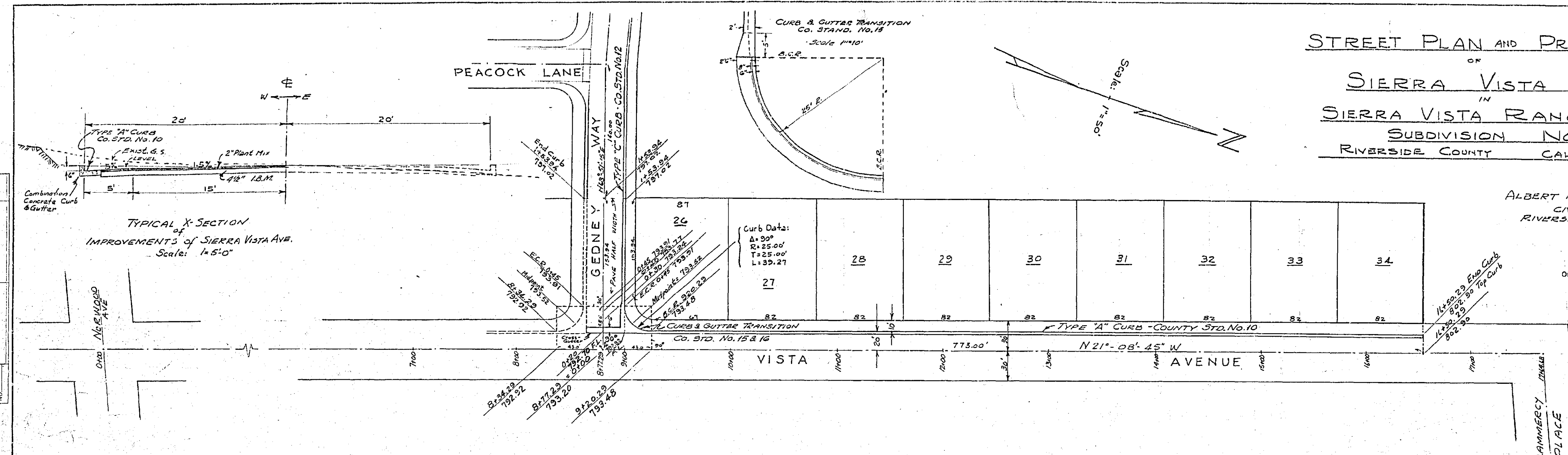


STREET PLAN AND PROFILE OF SIERRA VISTA AVE. IN SIERRA VISTA RANCHO SUBDIVISION NO. 2 RIVERSIDE COUNTY CALIFORNIA

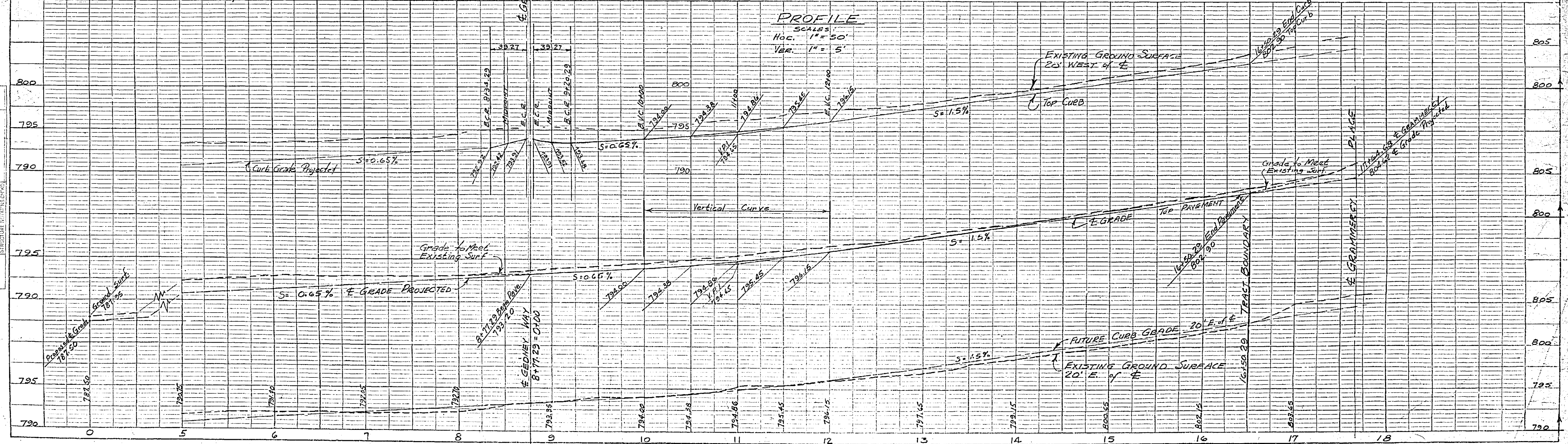
By
ALBERT A. WEBB ASSOCIATES
CIVIL ENGINEERS
RIVERSIDE CALIFORNIA
MAY 1954

PROPERTY OF
COUNTY OF RIVERSIDE
Office of the Road Commissioner

APPROVED THIS 22 day of Aug. 1954
A.C. KEITH, COUNTY SHERIFF
By: *C.D. Powell*
DEPUTY



NOTE:
B.M. is spike in RR 256925 F
at SIERRA VISTA AVE. & NORWOOD AVE.
Elev. 788.72 U.S. C. & G.S. (This datum used)
788.94 per R.I. Co. F.B. Top B.M.



| DATE | |
|-------------|--|
| BY | |
| REVISION | |
| 1. CHECKED | |
| 2. DESIGNED | |
| 3. PLANNED | |
| 4. APPROVED | |
| 5. FIELD | |
| 6. AS BUILT | |
| 7. REVISION | |
| 8. NO. 7377 | |

| DATE | |
|-------------|--|
| BY | |
| REVISION | |
| 1. CHECKED | |
| 2. DESIGNED | |
| 3. PLANNED | |
| 4. APPROVED | |
| 5. FIELD | |
| 6. AS BUILT | |
| 7. REVISION | |
| 8. NO. 7377 | |

