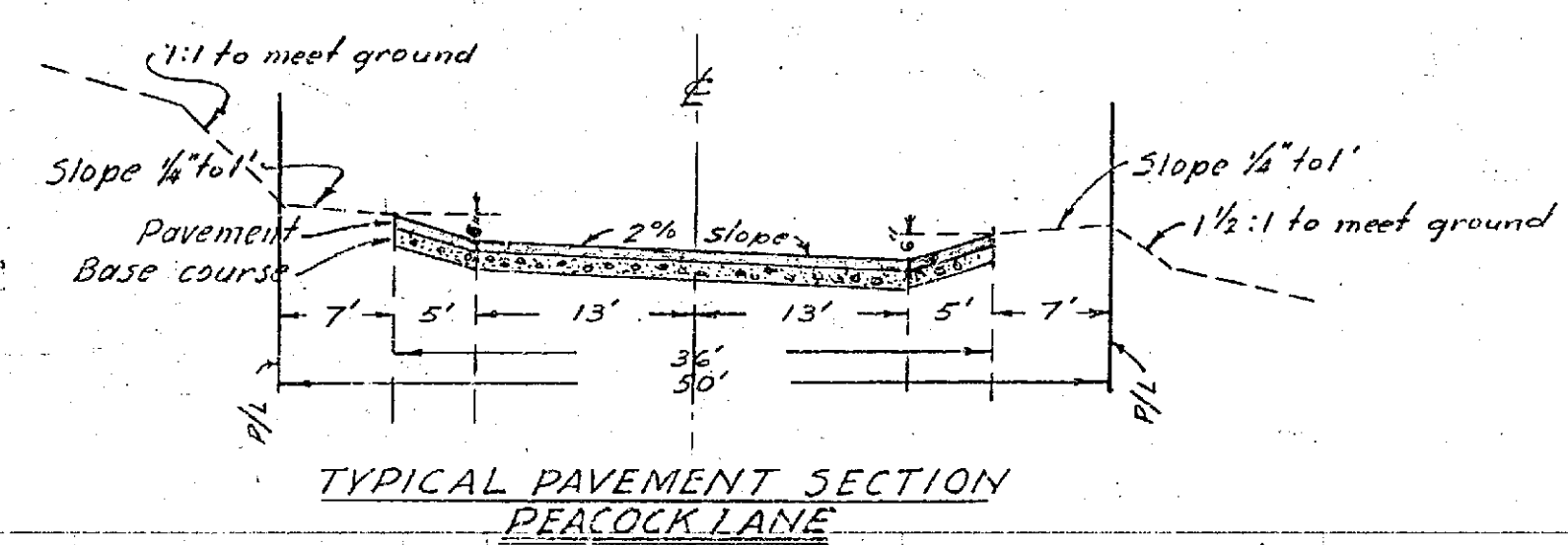
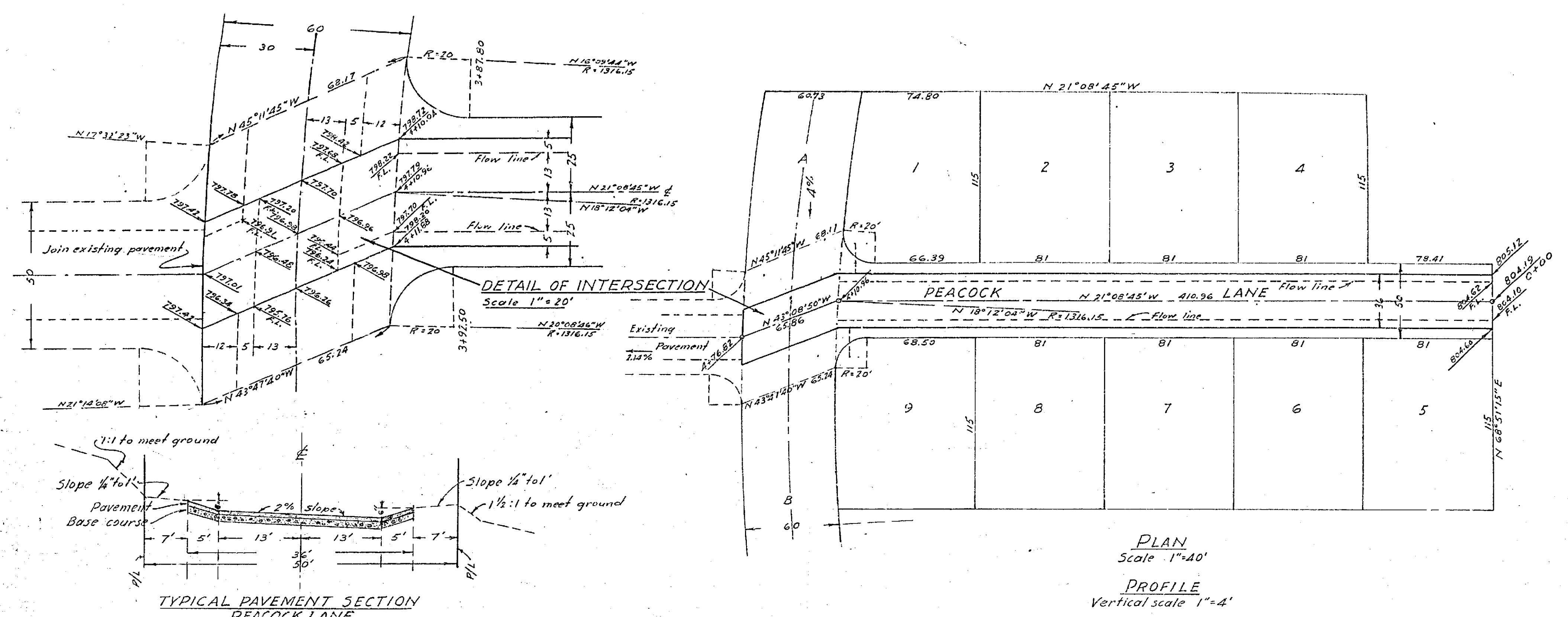


STREET PLAN AND PROFILE  
OF  
PEACOCK LANE  
IN  
SIERRA VISTA RANCHO SUBDIVISION

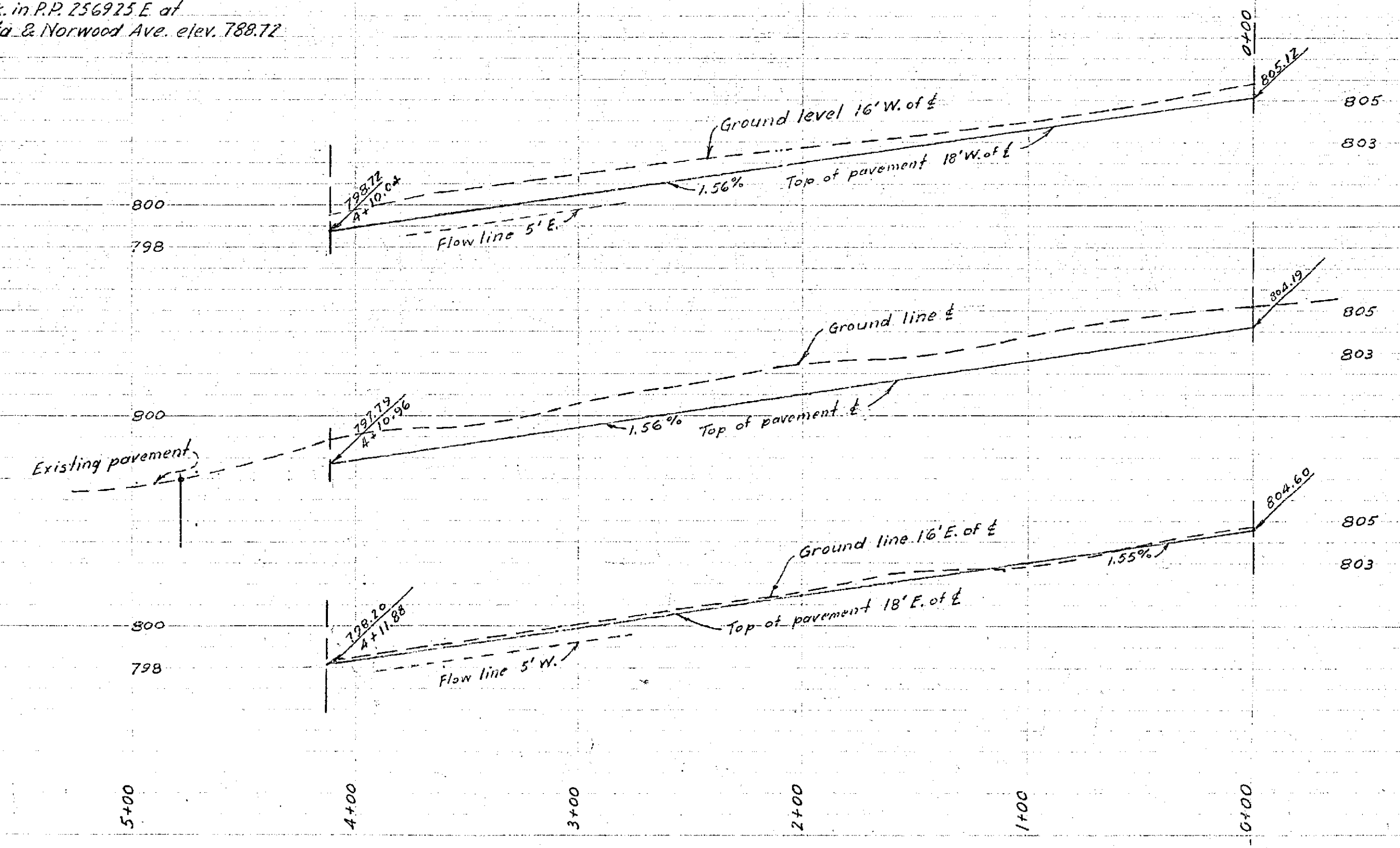
ALBERT A. WEBB ASSOCIATES  
CIVIL ENGINEERS  
OCTOBER 1952      SCALE 1"=40'

Approved this 12<sup>th</sup> day of October 1952.  
A.C. Keith, County Surveyor  
By *[Signature]* Deputy



Note: B.M. is spk. in P.P. 256925 E at Sierra Vista & Norwood Ave. elev. 788.72

Base course and Road Mix Surfacing to be of thickness and consist of such materials as approved by the Co. Road Commissioner. Original ground and final surfacing to be compacted to not less than 90% of ultimate.



PROPERTY OF  
COUNTY OF RIVERSIDE  
Office of the Road Commissioner