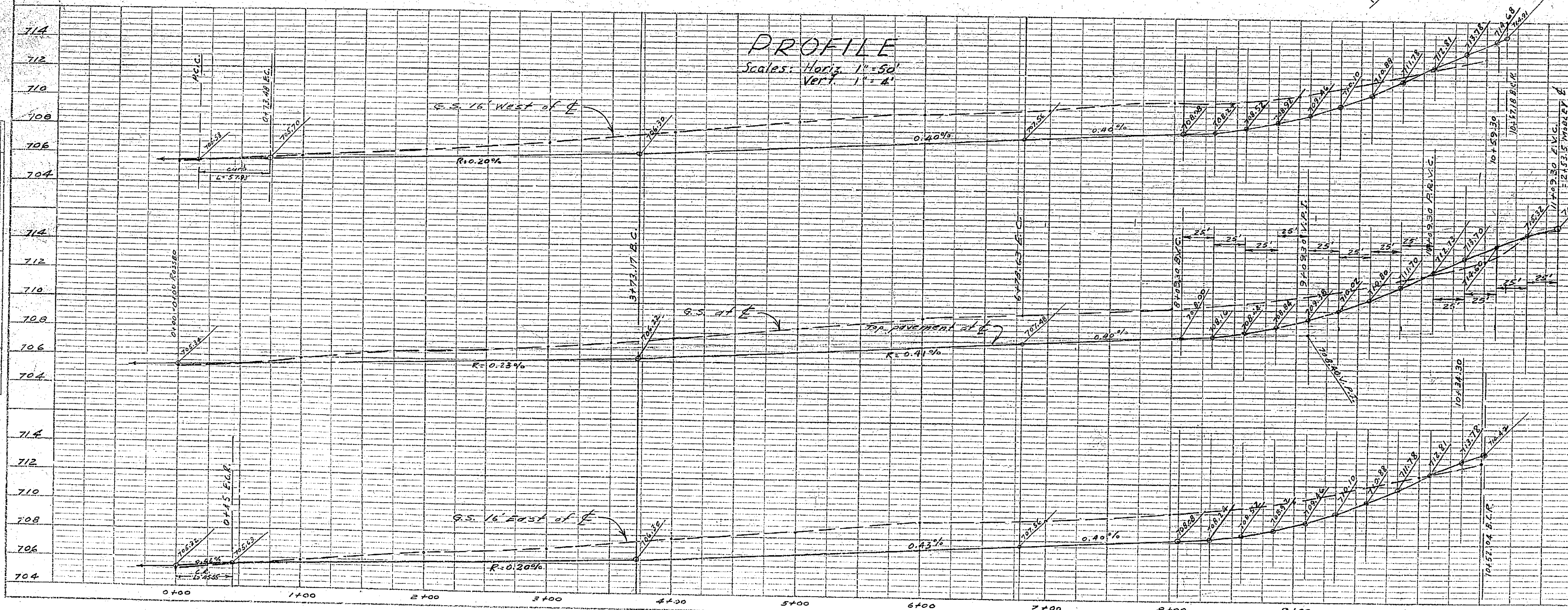
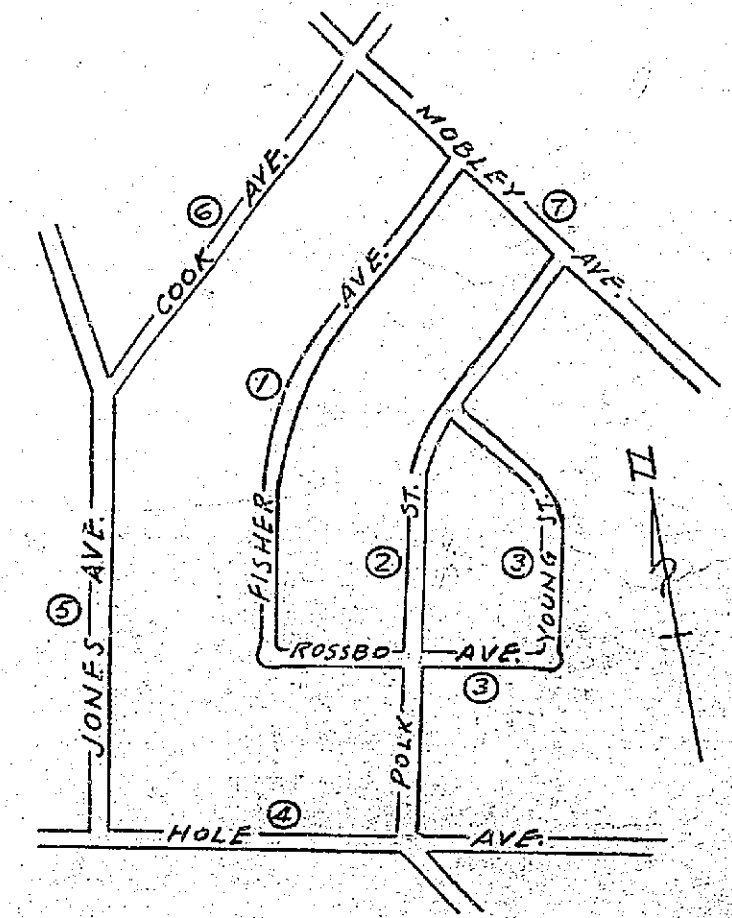
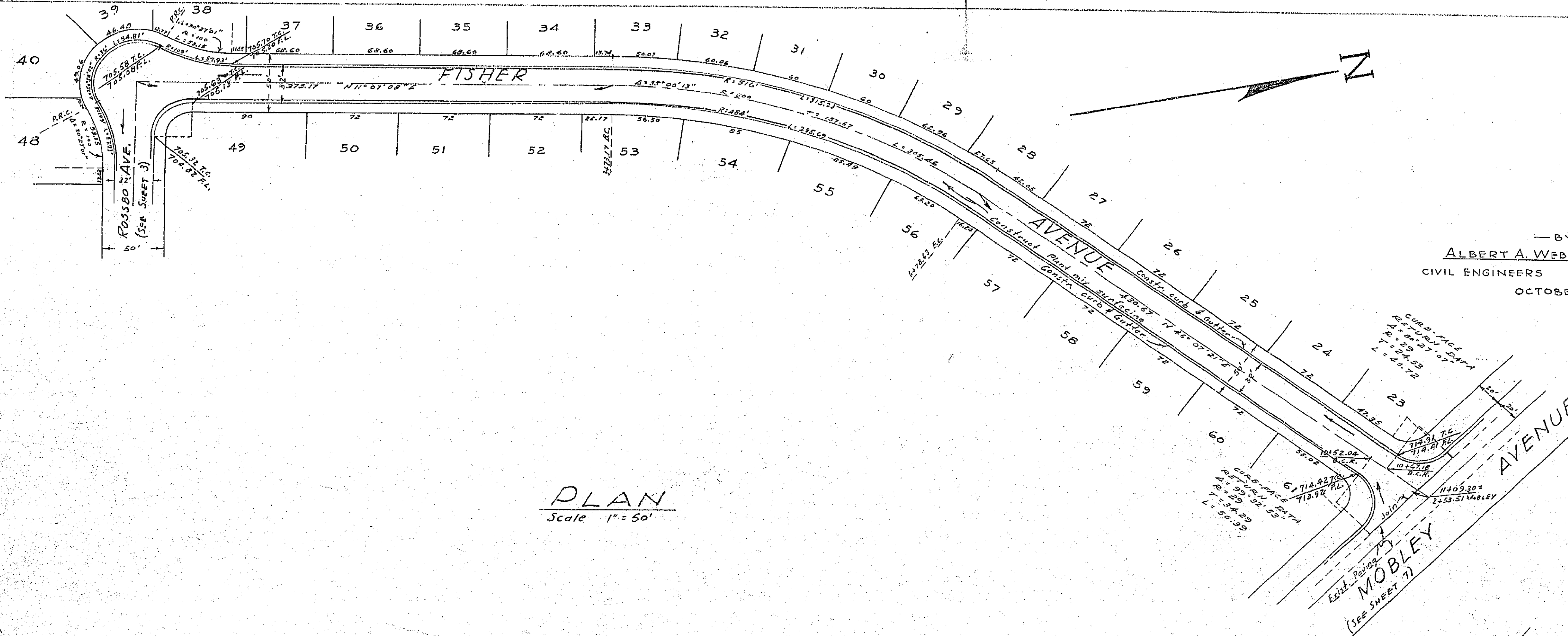


SHEET 1 OF 7
STREET PLAN AND PROFILE
OF
FISHER AVENUE
IN
SIERRA GARDENS
RIVERSIDE COUNTY, CALIFORNIA

BY
ALBERT A. WEBB ASSOCIATES
CIVIL ENGINEERS RIVERSIDE, CALIF.
OCTOBER 1954



NOTES:
Bench Mark - 50' bolt above Riverside Co. Surveyor's tag at E. Hole & Jones Ave. **704.10**
Curb & Gutter - to conform to Subdivision Improvement Std. No. 10, Riverside County, unless otherwise specified.
Paving to be 2" Plant Mix Surfacing to conform to Std. No. 2, Typical Street Section, unless otherwise specified. No sidewalks.
Construction shall conform to Riverside County Subdivision Improvement Standards and Co. Road Dept. specifications.
Cross gutters to conform to Std. No. 13, 1/2" width x 6"
Base Course Thickness to be 5" min - 7" max. as directed.

Approved this 2nd day of November 1954
A. G. KEITH
Road Commissioner
by B. D. Russell Deputy

PROPERTY OF
COUNTY OF RIVERSIDE
Office of the Road Commissioner

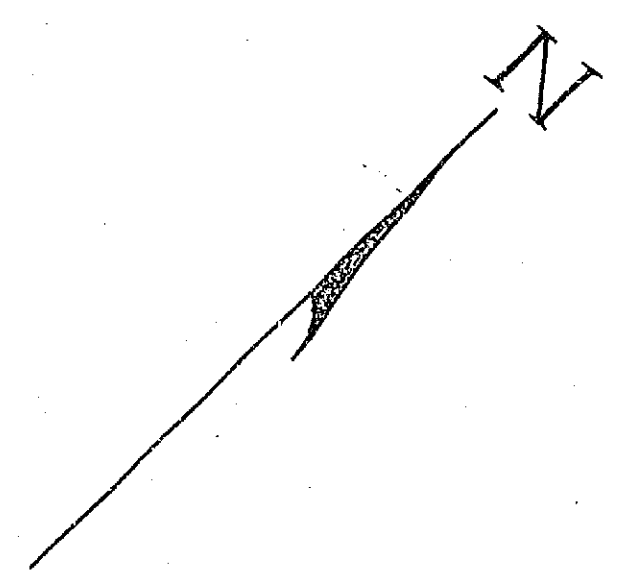
R-803

PLATE 1 - PLAN - PROFILE - F.A.S.
CLEARPRINT PAPER CO. S.F. CAL.
NO. 100-1001

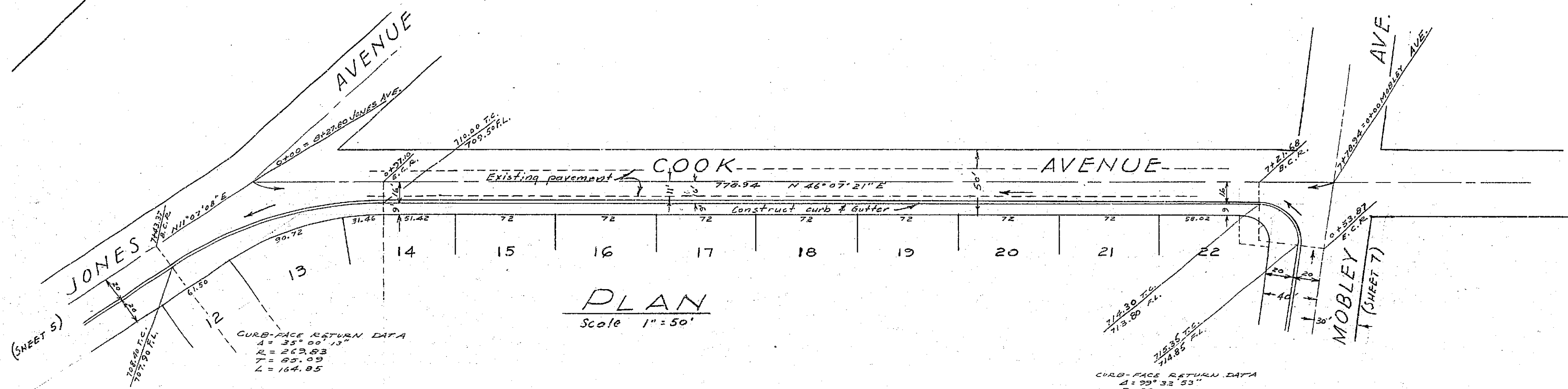
DATE	
BY	
PLAN	
REVISIONS	
NOTED	
NOTE BOOK	
NO.	

DATE	
BY	
PROFILE	
REVISIONS	
NOTED	
NOTE BOOK	
NO.	

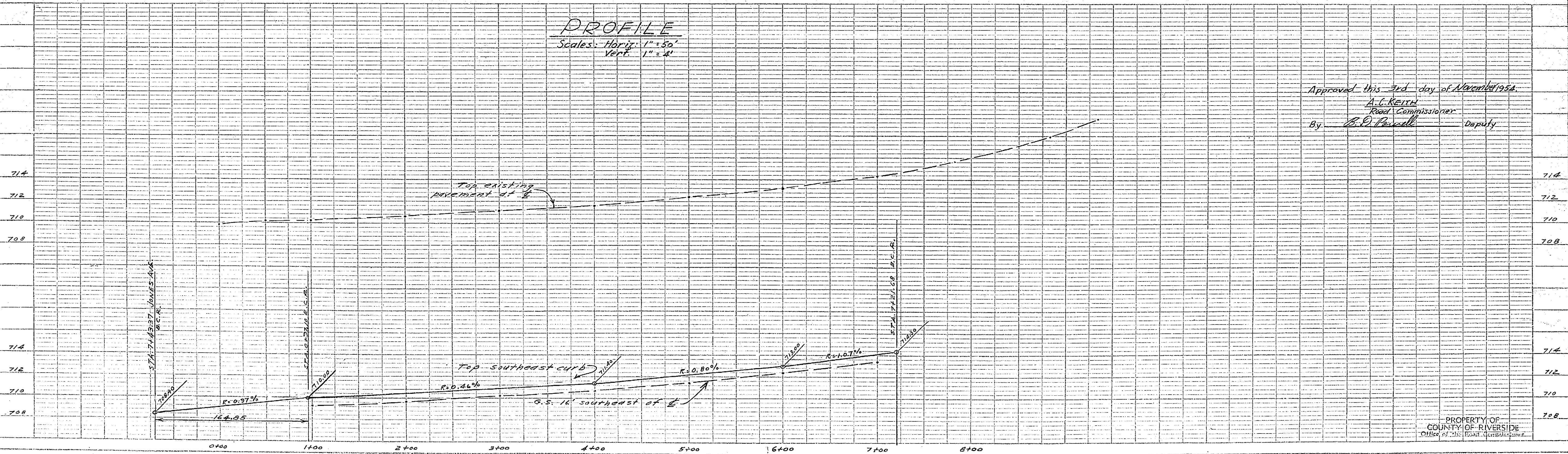
SHEET 6 OF 7
STREET PLAN AND PROFILE
OF
COOK AVENUE
IN
SIERRA GARDENS
RIVERSIDE COUNTY, CALIFORNIA



DATE	
BY	
PROJECT	
DESIGNED	
CHECKED	
IN CHARGE	
NO.	



DATE	
BY	
PROJECT	
DESIGNED	
CHECKED	
IN CHARGE	
NO.	

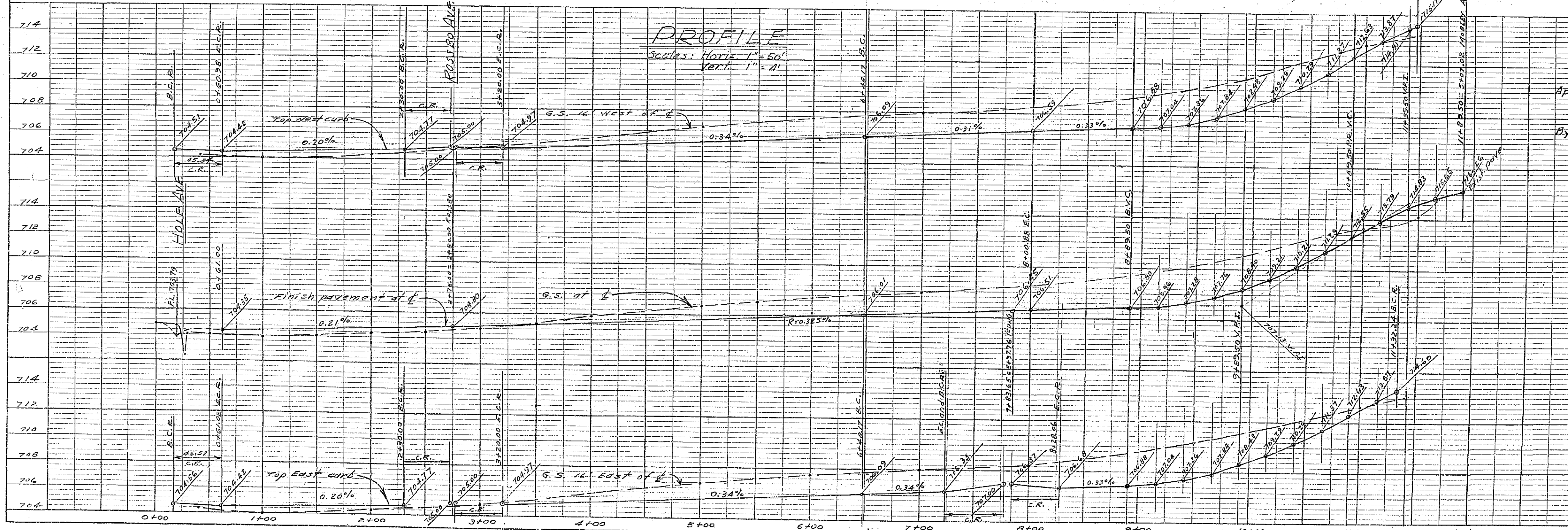
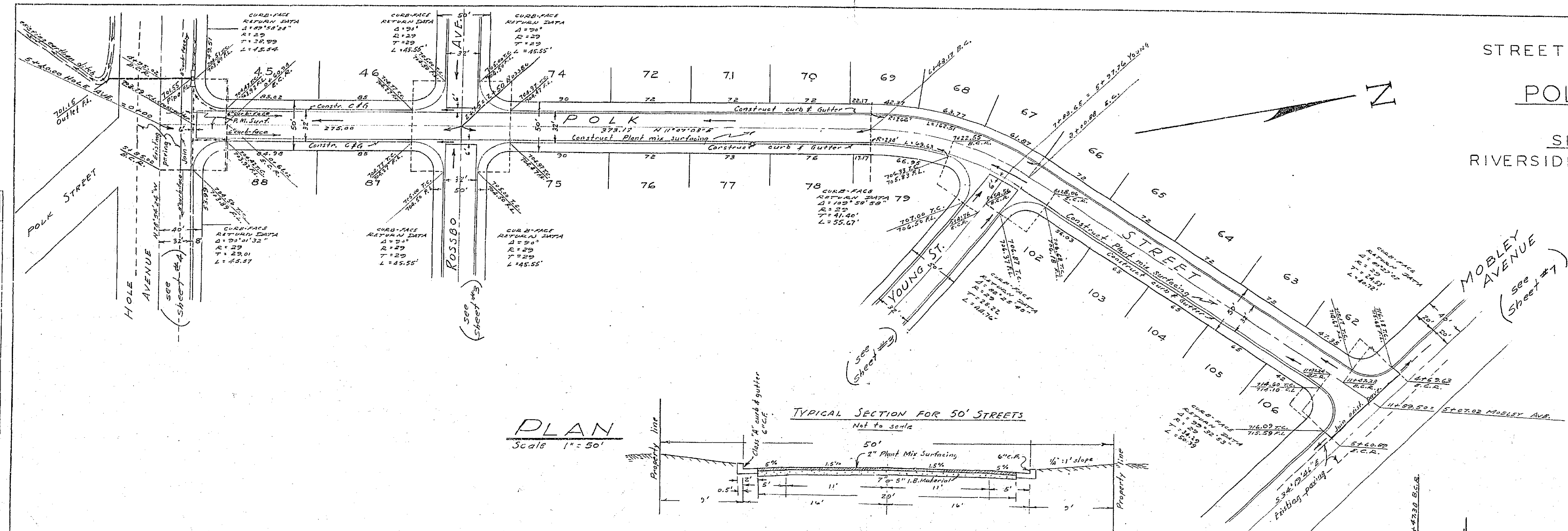


Approved this 3rd day of November 1952.
 A. L. KEITH
 Road Commissioner
 By B. P. Russell Deputy

PROPERTY OF
 COUNTY OF RIVERSIDE
 OFFICE OF THE ROAD COMMISSIONER

R-803

SHEET 2 OF 7
 STREET PLAN AND PROFILE
 OF
POLK STREET
 IN
 SIERRA GARDENS
 RIVERSIDE COUNTY, CALIFORNIA



Approved this 3rd day of November 1954
 A.C. KELLY
 Road Commissioner
 By B.D. Russell Deputy

PROPERTY OF
 COUNTY OF RIVERSIDE
 Office of the Road Commissioner

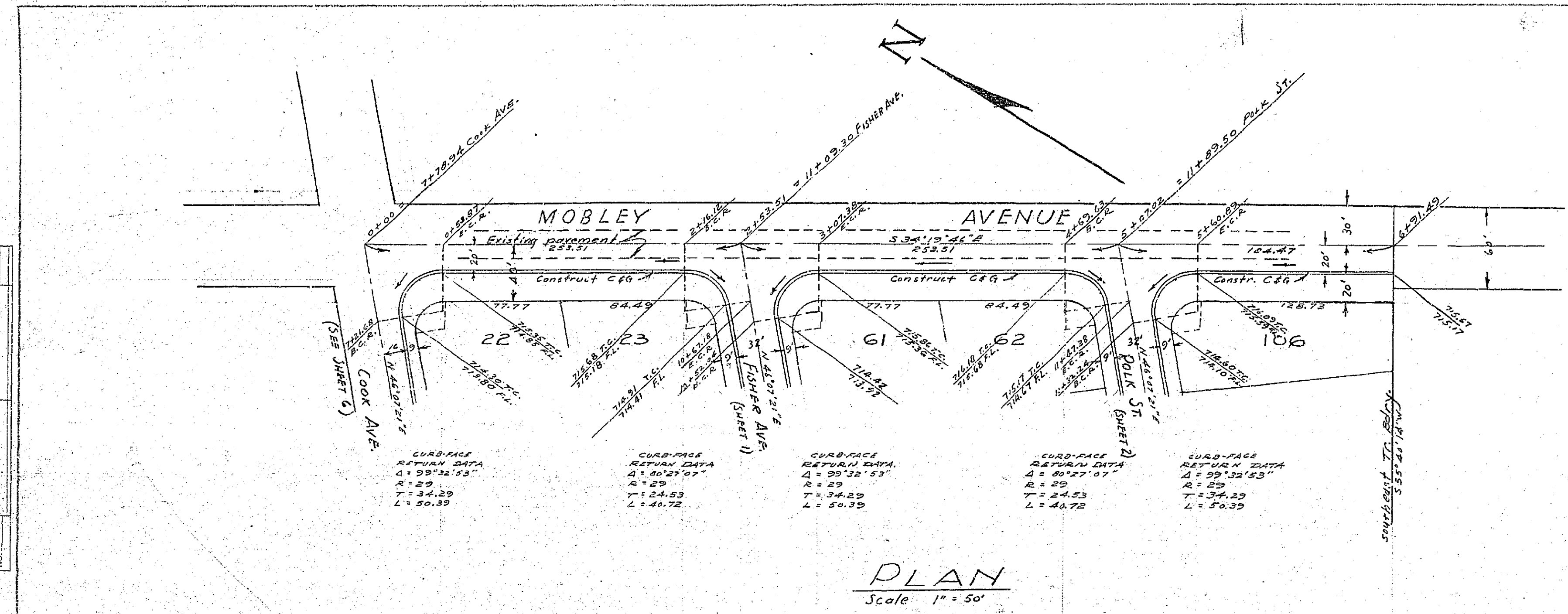
R-803

DATE	
BY	
PROJECT	
DESIGNED	
PLANNED	
NOTED	
NO.	

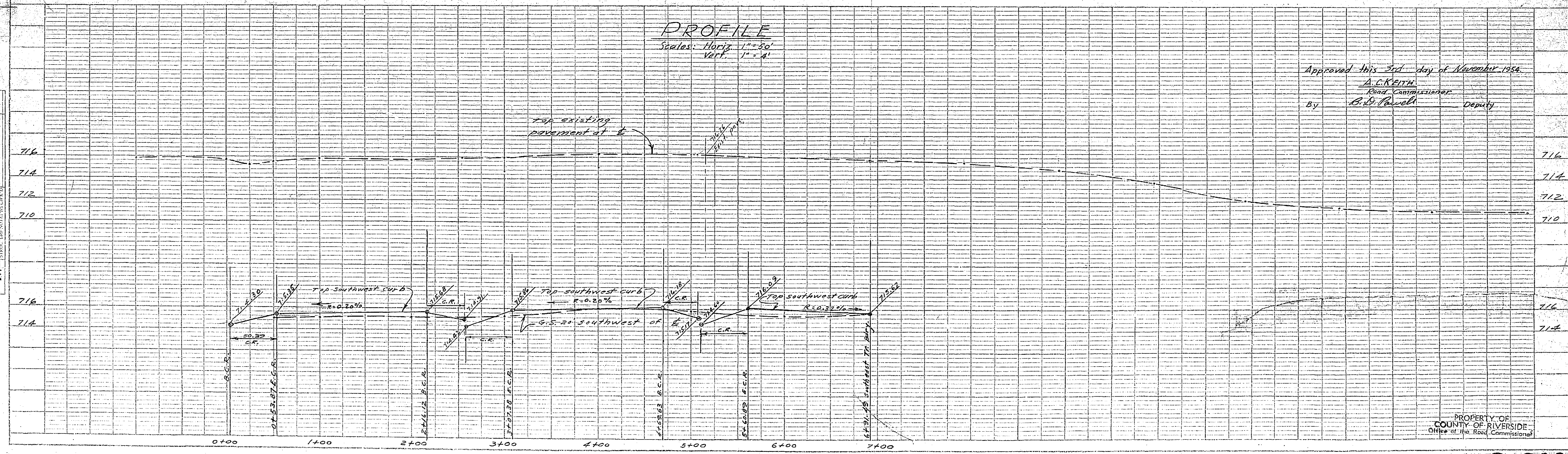
DATE	
BY	
PROJECT	
DESIGNED	
PLANNED	
NOTED	
NO.	

PLATE PLAN-PROFILE D. R. B. STANDARD
 100% AND PAPER MADE AND PRINTED IN U. S. A.
 EUGENE DIETZEN CO.

SHEET 7 OF 7
 STREET PLAN AND PROFILE OF
MOBLEY AVENUE
 IN
 SIERRA GARDENS
 RIVERSIDE COUNTY, CALIFORNIA



DATE _____
 BY _____
 CHECKED _____
 REVISIONS _____
 PLAN NOTE BOOK NO. 22



Approved this 3rd day of November 1954
 A. C. KEITH
 Road Commissioner
 By B. D. PAVEL
 Deputy

DATE _____
 BY _____
 CHECKED _____
 REVISIONS _____
 PROFILE NOTE BOOK NO. 22

PROPERTY OF
 COUNTY OF RIVERSIDE
 Office of the Road Commissioner

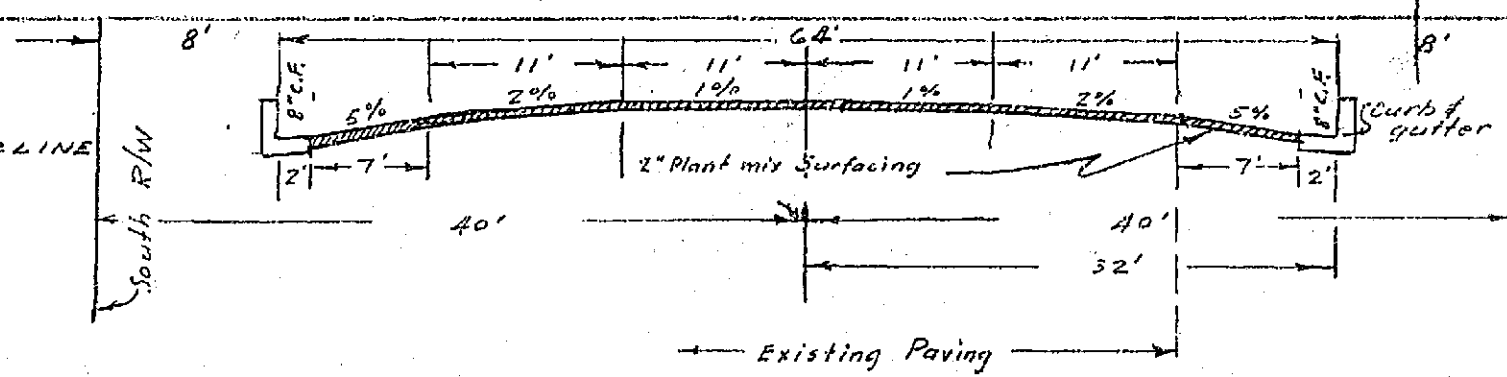
R-803

PLATE 1 PLAN PROFILE 7 A S
 STANDARD PLANS 33, 34, 35

SHEET 4 OF 7
STREET PLAN AND PROFILE
OF
HOLE AVENUE
IN
SIERRA GARDENS
RIVERSIDE COUNTY, CALIFORNIA



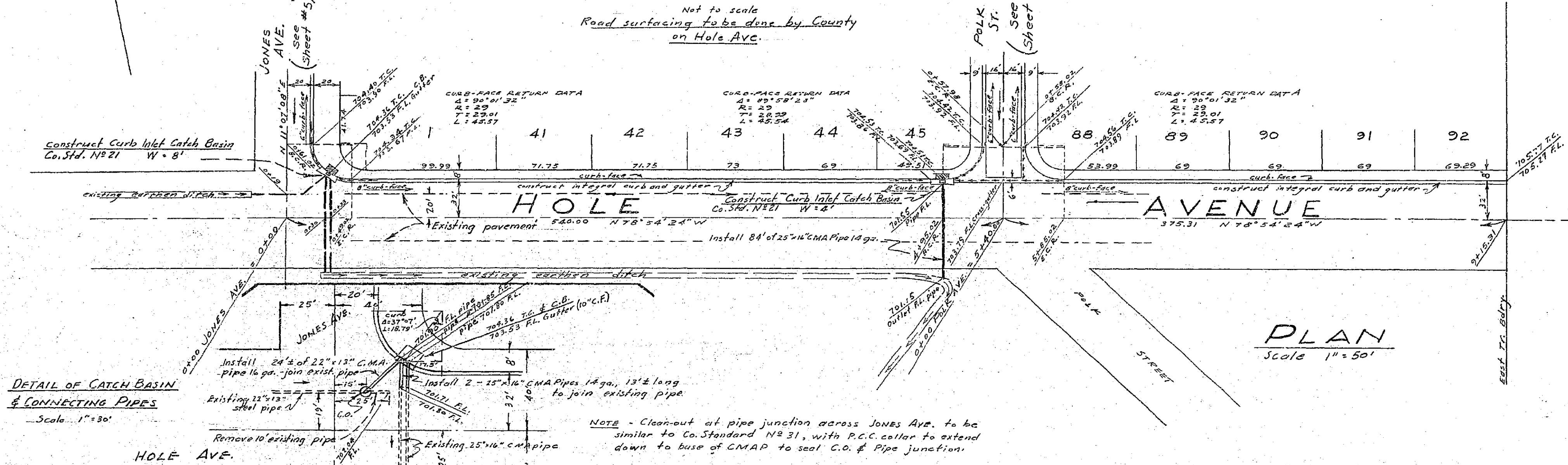
HOLE AVE. SOUTH OF CENTERLINE IS NOT TO BE IMPROVED



TYPICAL CROSS-SECTION FOR HOLE AVENUE

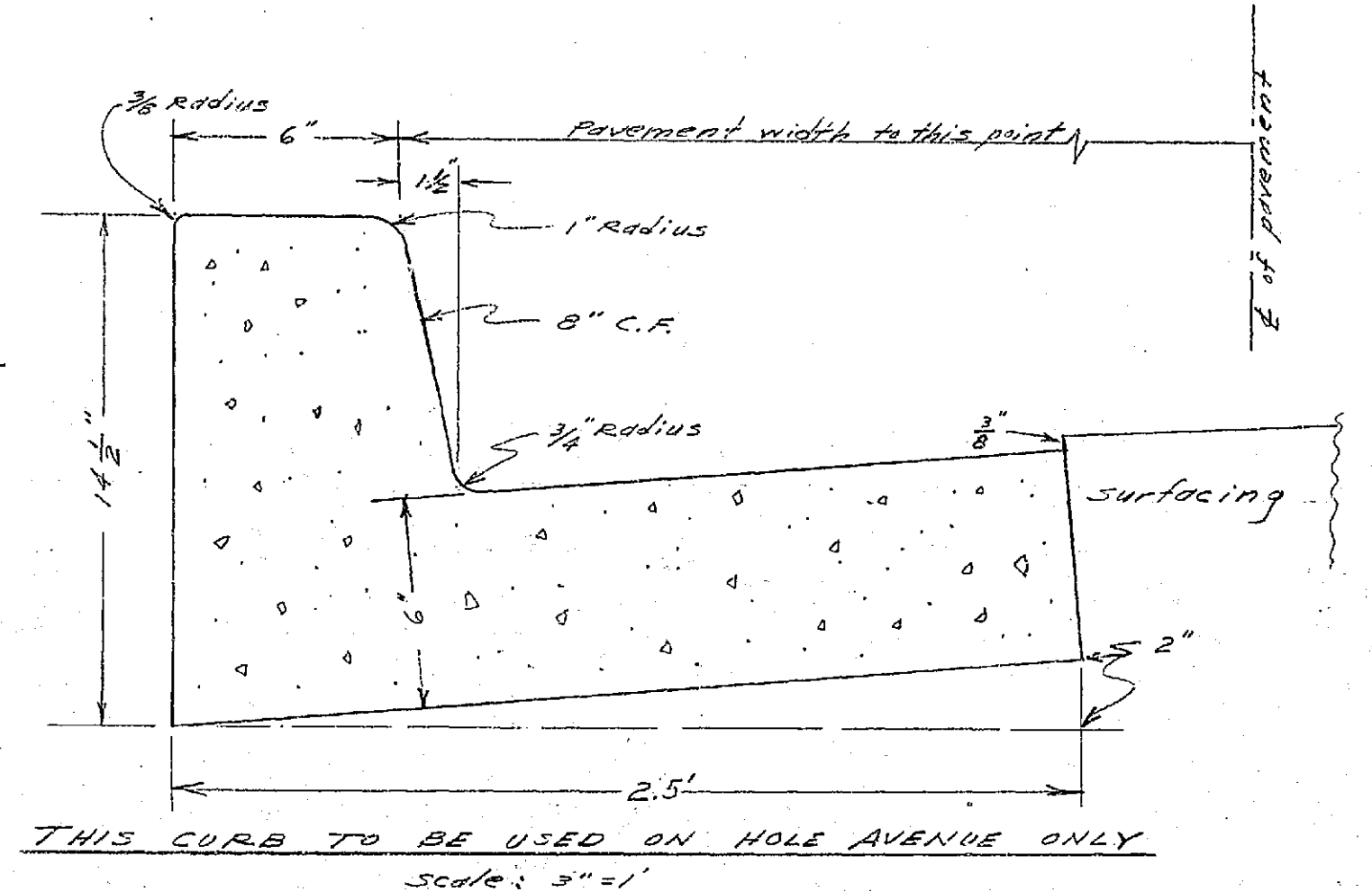
Not to scale
Road surfacing to be done by County on Hole Ave.

DATE	
BY	
REVISION	
1. SURVEYED	
2. PLANNED	
3. NOTED	
4. RECORDED	
5. FILED	
6. APPROVED	
7. CONTRACT	
8. OPENED	
9. CLOSED	
10. REMOVED	
11. REPAIRED	
12. RECONSTRUCTED	
13. REPAVED	
14. REPAVED	
15. REPAVED	
16. REPAVED	
17. REPAVED	
18. REPAVED	
19. REPAVED	
20. REPAVED	
21. REPAVED	
22. REPAVED	
23. REPAVED	
24. REPAVED	
25. REPAVED	
26. REPAVED	
27. REPAVED	
28. REPAVED	
29. REPAVED	
30. REPAVED	
31. REPAVED	
32. REPAVED	
33. REPAVED	
34. REPAVED	
35. REPAVED	
36. REPAVED	
37. REPAVED	
38. REPAVED	
39. REPAVED	
40. REPAVED	
41. REPAVED	
42. REPAVED	
43. REPAVED	
44. REPAVED	
45. REPAVED	
46. REPAVED	
47. REPAVED	
48. REPAVED	
49. REPAVED	
50. REPAVED	
51. REPAVED	
52. REPAVED	
53. REPAVED	
54. REPAVED	
55. REPAVED	
56. REPAVED	
57. REPAVED	
58. REPAVED	
59. REPAVED	
60. REPAVED	
61. REPAVED	
62. REPAVED	
63. REPAVED	
64. REPAVED	
65. REPAVED	
66. REPAVED	
67. REPAVED	
68. REPAVED	
69. REPAVED	
70. REPAVED	
71. REPAVED	
72. REPAVED	
73. REPAVED	
74. REPAVED	
75. REPAVED	
76. REPAVED	
77. REPAVED	
78. REPAVED	
79. REPAVED	
80. REPAVED	
81. REPAVED	
82. REPAVED	
83. REPAVED	
84. REPAVED	
85. REPAVED	
86. REPAVED	
87. REPAVED	
88. REPAVED	
89. REPAVED	
90. REPAVED	
91. REPAVED	
92. REPAVED	
93. REPAVED	
94. REPAVED	
95. REPAVED	
96. REPAVED	
97. REPAVED	
98. REPAVED	
99. REPAVED	
100. REPAVED	

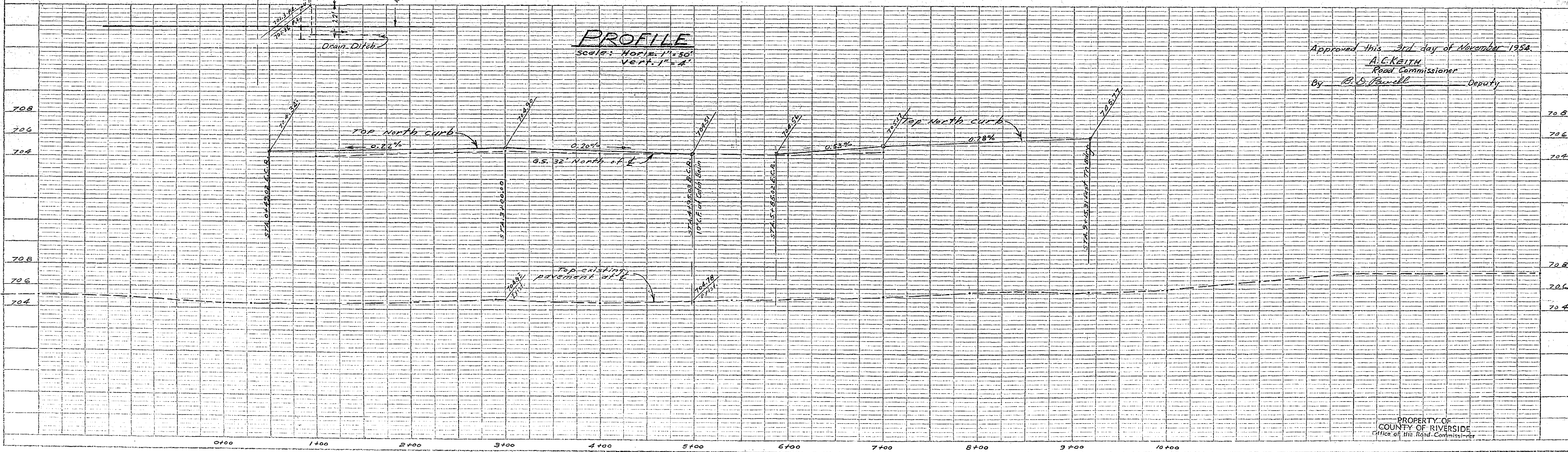


DETAIL OF CATCH BASIN & CONNECTING PIPES
Scale: 1"=30'

NOTE - Clean-out at pipe junction across Jones Ave. to be similar to Co. Standard NR 31, with P.C.C. collar to extend down to base of C.M.A. to seal C.O. & Pipe junction.



PROFILE
Scale: Horiz. 1"=50'
Vert. 1"=4'



Approved this 3rd day of November 1954
A. C. KATH
Road Commissioner
By B. D. Powell Deputy

PROPERTY OF
COUNTY OF RIVERSIDE
Office of the Road Commissioner

R-803

PLATE 1 PLAN-PROFILE - A. S.
EXHIBIT 1954-55 TO S. P. GAL.
NO. 20000