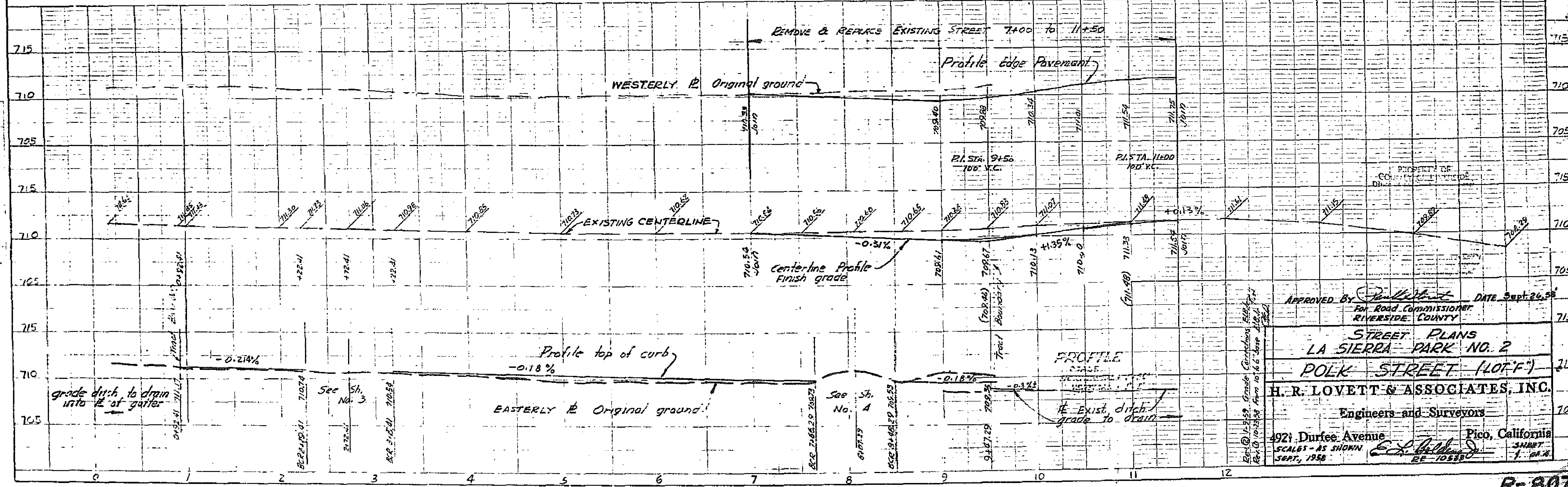
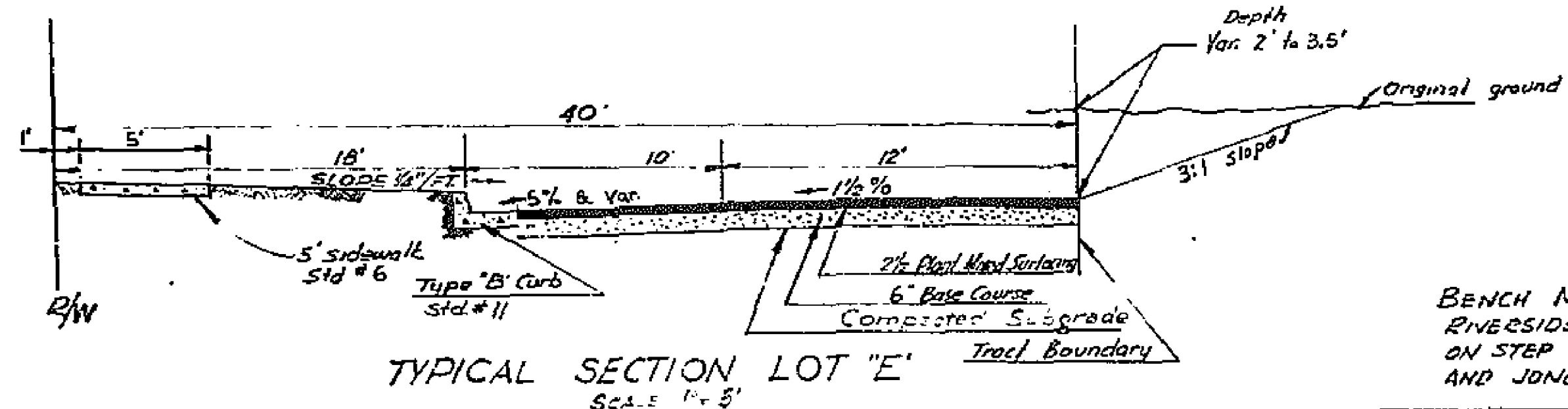
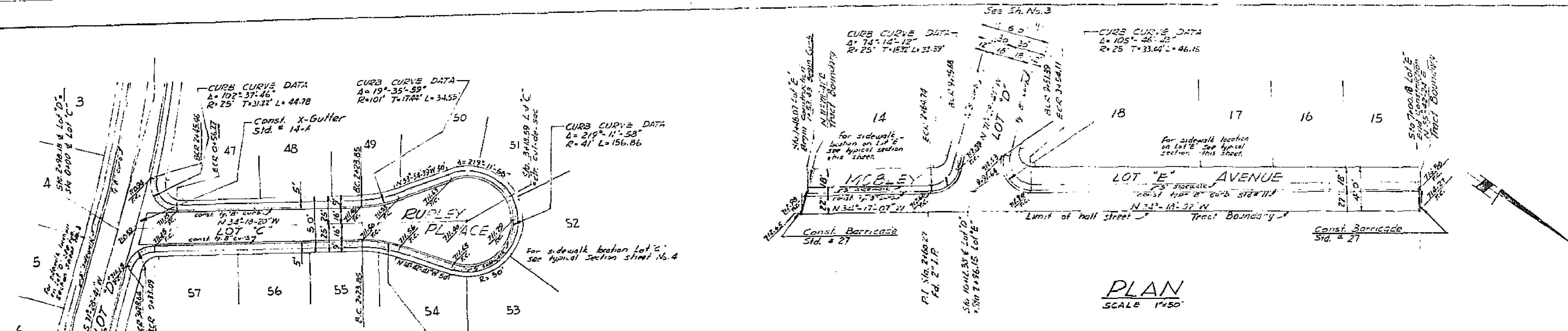


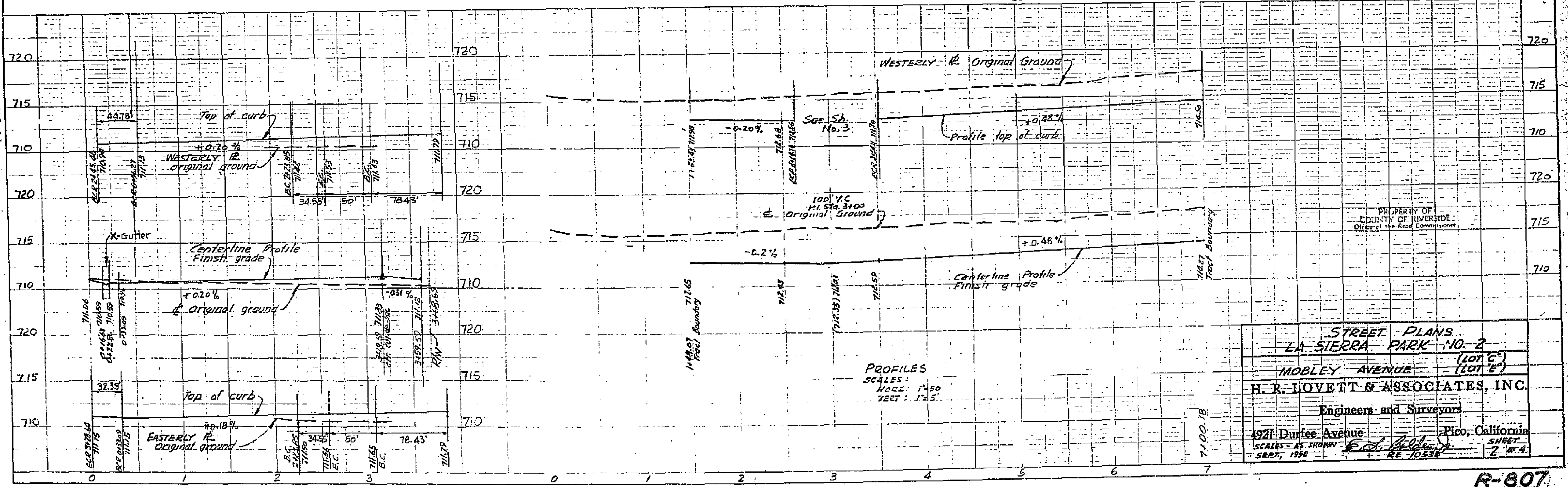
QUANTITY ESTIMATE

DISTANCE	OBJECT NAME	QUANTITY	CLASS B CURVE				TOTAL	
			FT. CURB	FT. GUTTER	FT. SIDEWALK	LINEAL FT.		
1	POLK ST. LOT "F"	624	414	53.7	18.7	376	572	
2	RUPLEY PL. LOT "C"	230	198	41.2		324	275	
3	MOBLEY AVE. LOT "E"	1866	187	34.3		24.1	40	
4	BROTMAN AVE. LOT "D"	2354	482	115.2	18.7	81.8	667	
5	CASS ST. LOT "A"	1208	251	66.7		48.5	348	
6	LIVELY ST. LOT "B"	2112	236	76.4		55.6	395	
TOTALS		8400	1818	387.5	37.4	280.0	40	2510





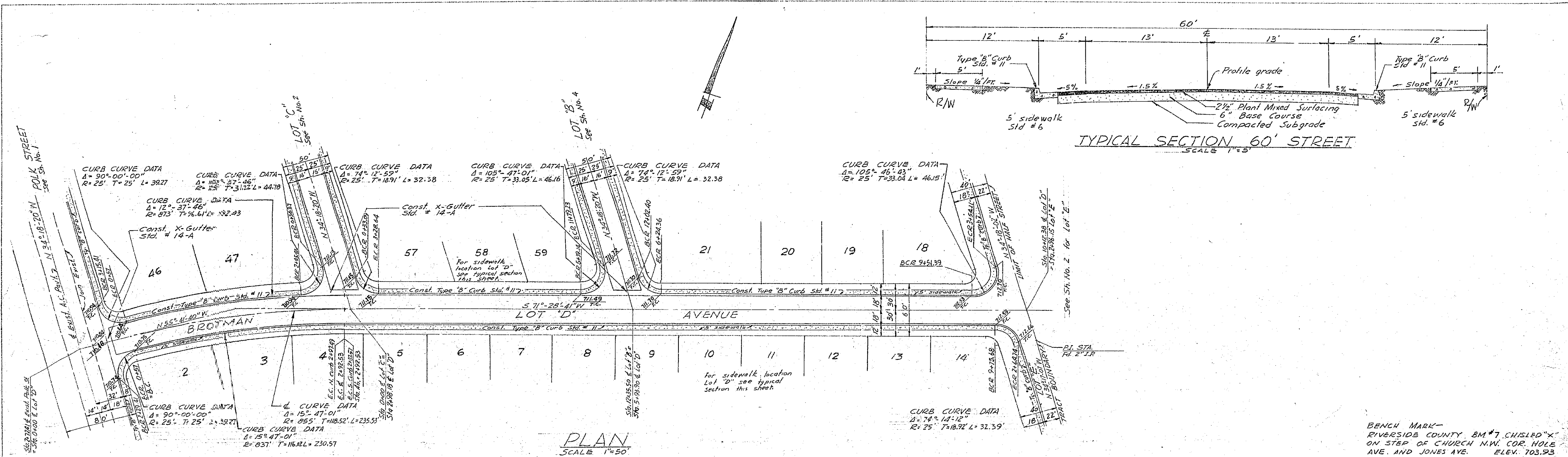
BENCH MARK -
RIVERSIDE COUNTY BM #7 CHISLED "X"
ON STEP OF CHURCH NW COR. HOLE AVE.
AND JONES AVE. ELEV. 703.93



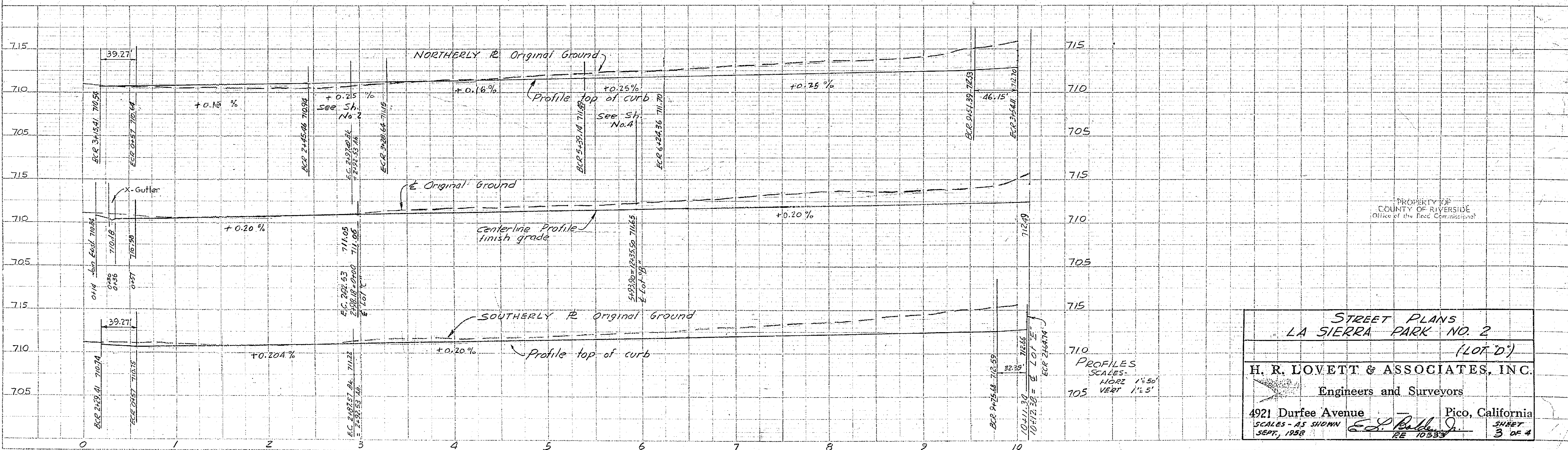
STREET PLANS
LA SIERRA PARK NO. 2
(LOT "C")
(LOT "E")
H. R. LOVETT & ASSOCIATES, INC.
Engineers and Surveyors
4921 Dupree Avenue
Pico, California
SCALES AS SHOWN
SEPT, 1958
RE-10553
SHEET 2 OF 4

R-807

DATE	
BY	
REVISIONS	
NOTED	
DATE	
BY	
REVISIONS	
NOTED	
DATE	
BY	
REVISIONS	
NOTED	
DATE	
BY	
REVISIONS	
NOTED	



DATE	
BY	
REVISIONS	
NOTED	
DATE	
BY	
REVISIONS	
NOTED	
DATE	
BY	
REVISIONS	
NOTED	



BENCH MARK - RIVERSIDE COUNTY BM #7 CHISLED "X" ON STEP OF CHURCH N.W. COR. HOLE AVE. AND JONES AVE. ELEV. 703.93

PROPERTY OF COUNTY OF RIVERSIDE Office of the Rec. Commission

STREET PLANS
LA SIERRA PARK NO. 2
(LOT "D")

H. R. LOVETT & ASSOCIATES, INC.
Engineers and Surveyors

4921 Durfee Avenue Pico, California
SEPT. 1958 *H. R. Lovett* RE 10533

SHEET
3 OF 4

R-807