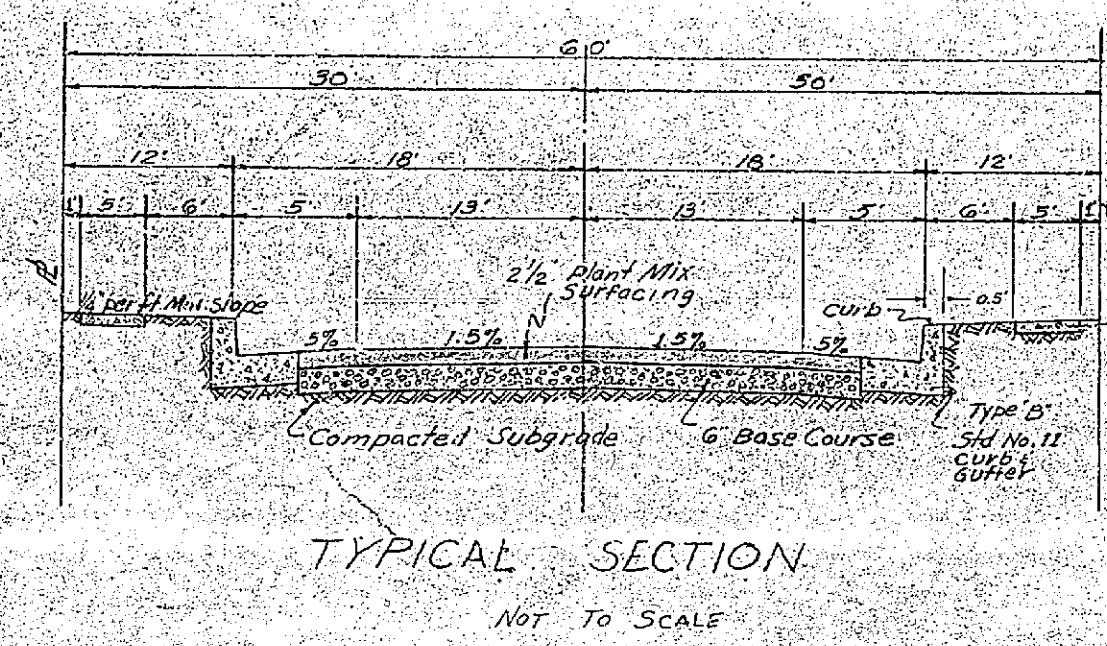
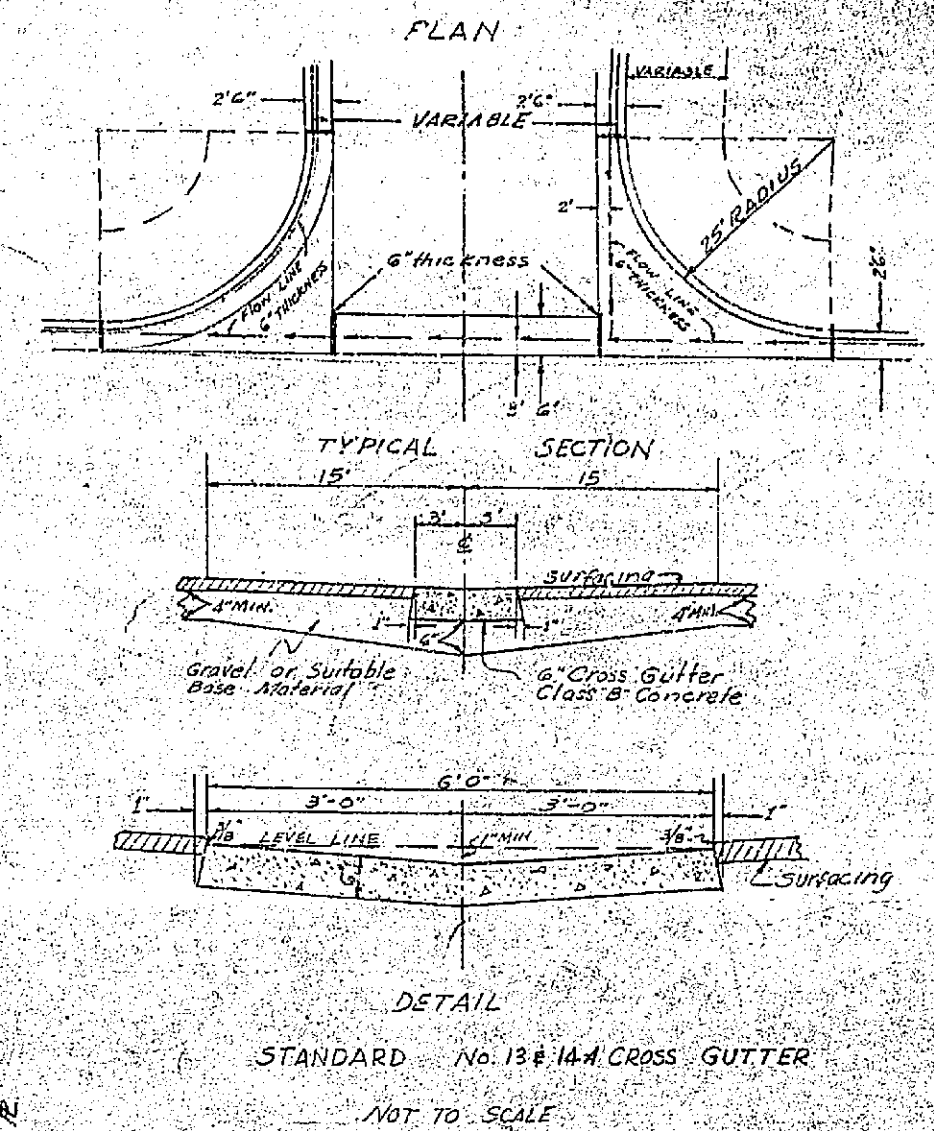
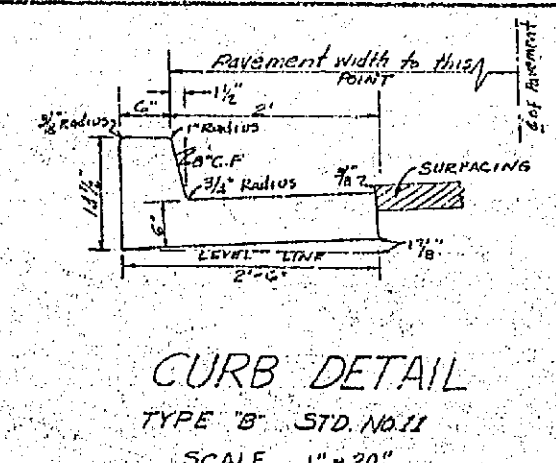
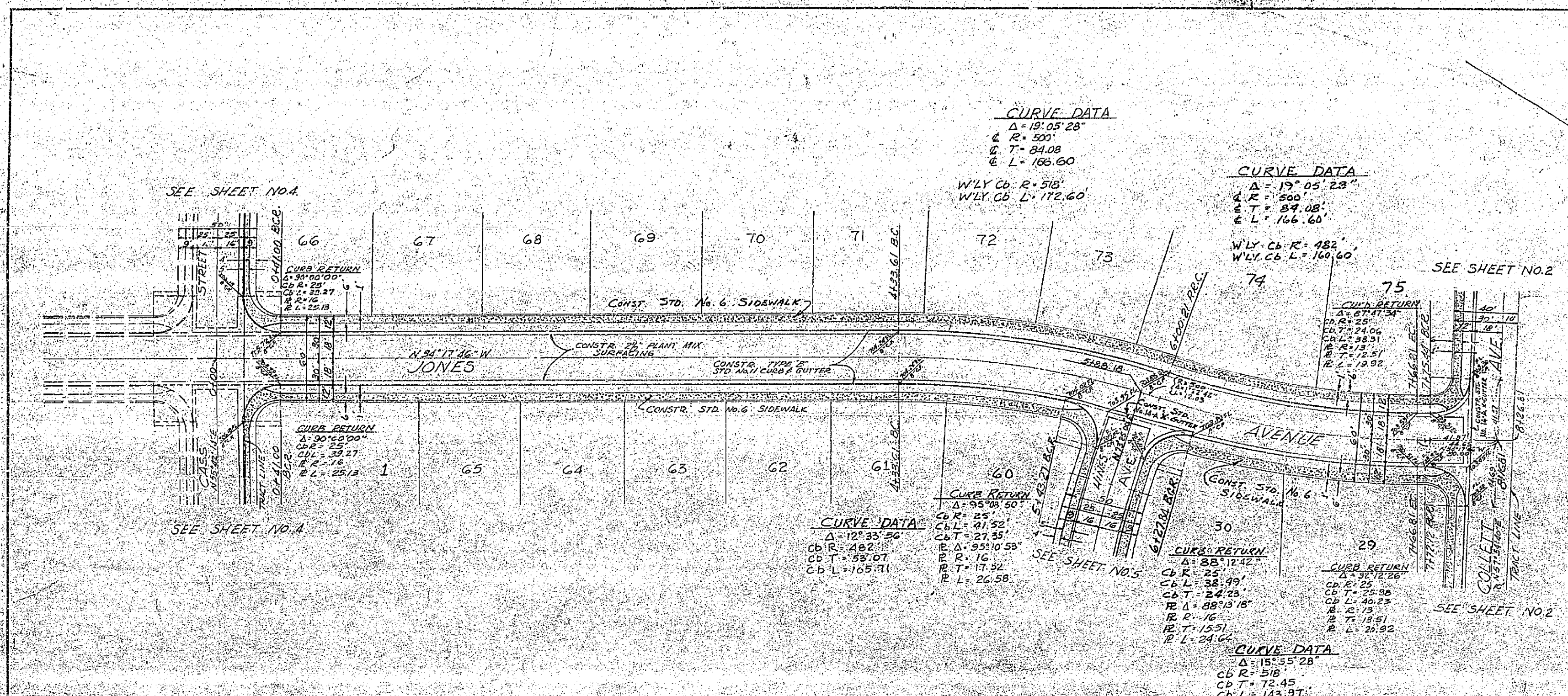


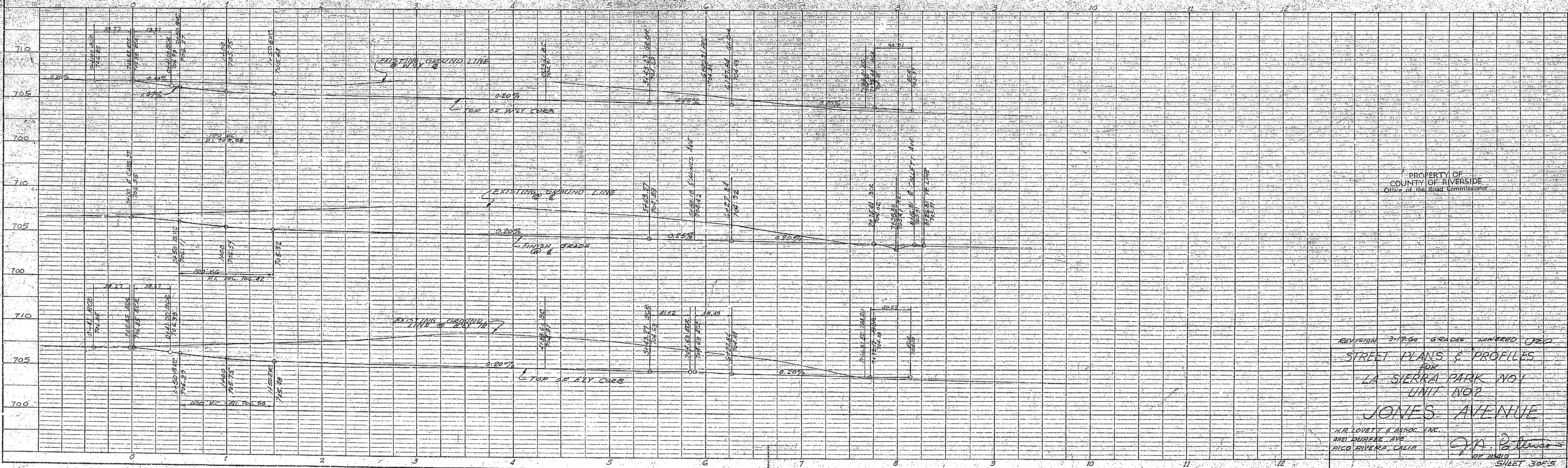
DATE	
BY	
CHECKED	
APPROVED	
NO.	

DATE	
BY	
CHECKED	
APPROVED	
NO.	



SCALES
 PLAN 1"=50'
 PROFILE Horiz. 1"=50'
 Vert. 1"=5'

B.M.
 Riverside County B.M. No. 7
 Chiseled 'X' On Step Of Church
 N.W. Corner Hole Ave. & Jones Ave.
 ELEV. 703.93

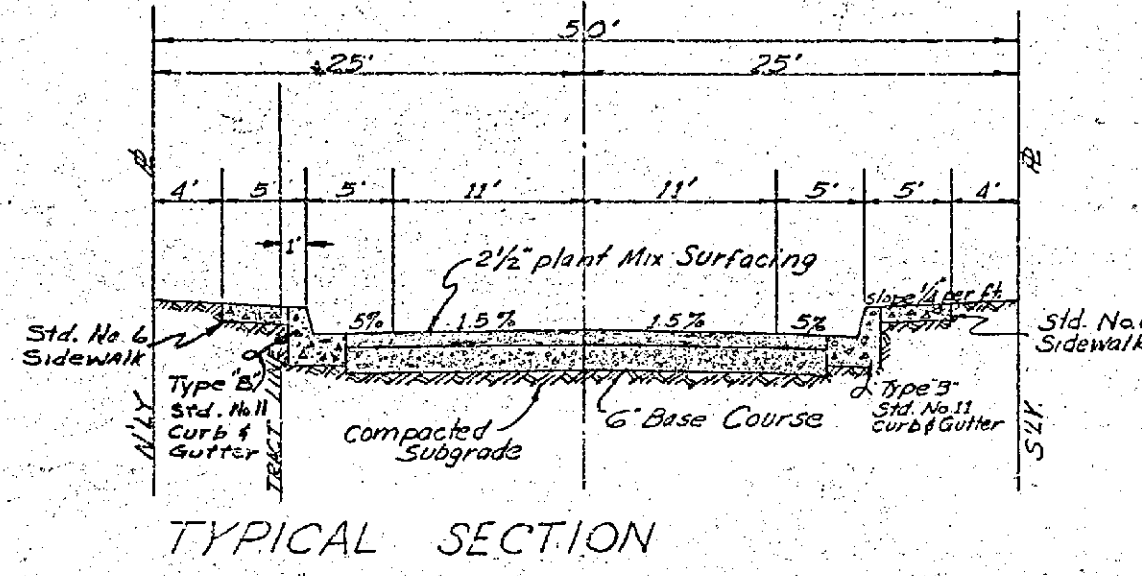
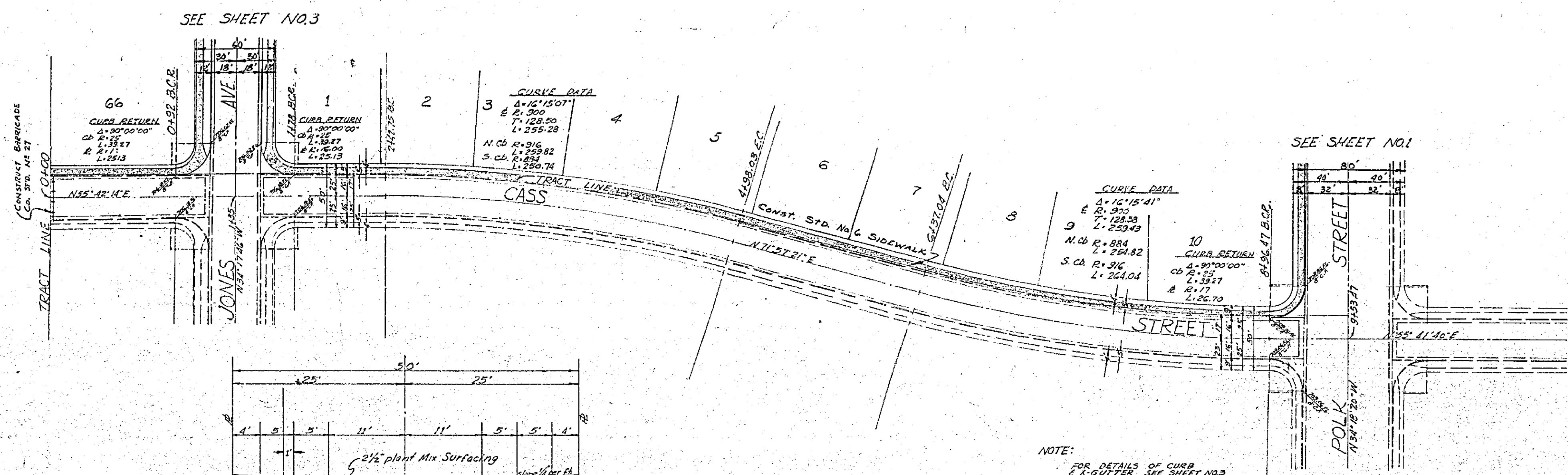


PROPERTY OF
 COUNTY OF RIVERSIDE
 Office of the Board Commissioner

REVISION 3/1/60 GRADES LOWERED C/P
 STREET PLANS & PROFILES
 FOR
 LA SIERRA PARK MOB
 UNIT NO. 7
 JONES AVENUE
 H.R. LOVELL & ASSOC. INC.
 4801 BUREAU AVE.
 RICO RIVERSIDE CALIF.
 J.M. [Signature]
 10/10/60
 SHEET 3045

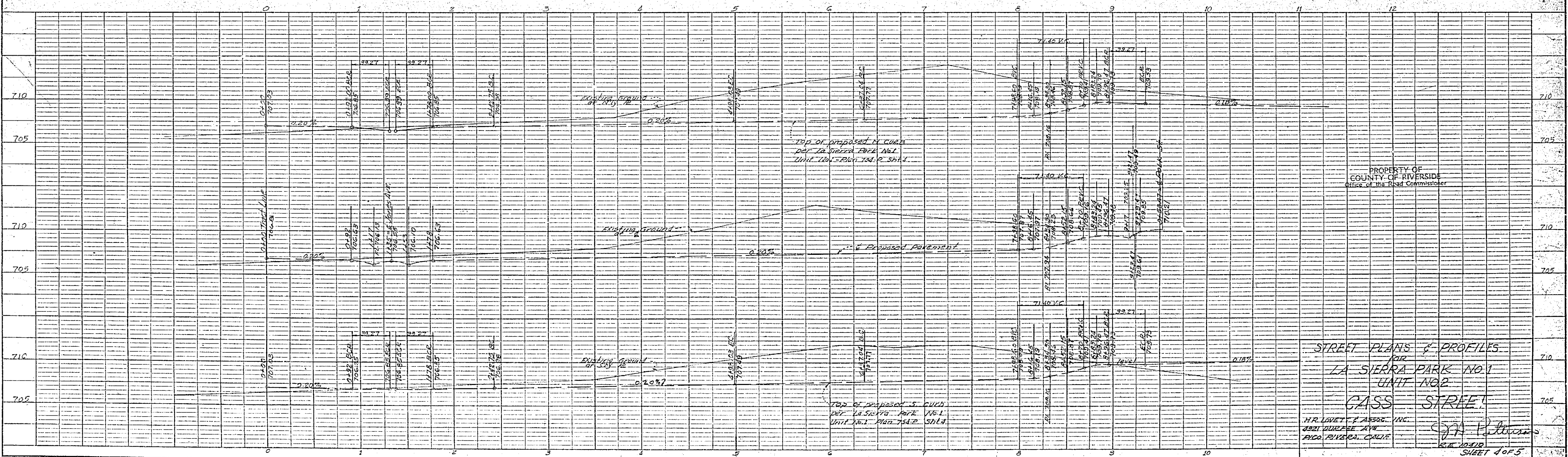
PLAN
 SURVEYED BY
 DATE
 NOTE BOOK NO.
 CHECKED BY
 DATE
 RT. OF WAY CHECKED BY
 DATE

PROFILE
 SURVEYED BY
 DATE
 NOTE BOOK NO.
 CHECKED BY
 DATE
 STRUCTURE & DATA CHECKED BY
 DATE



SCALES
 PLAN - 1"=50'
 PROFILE - HORIZ - 1"=50'
 VERT - 1"=5'

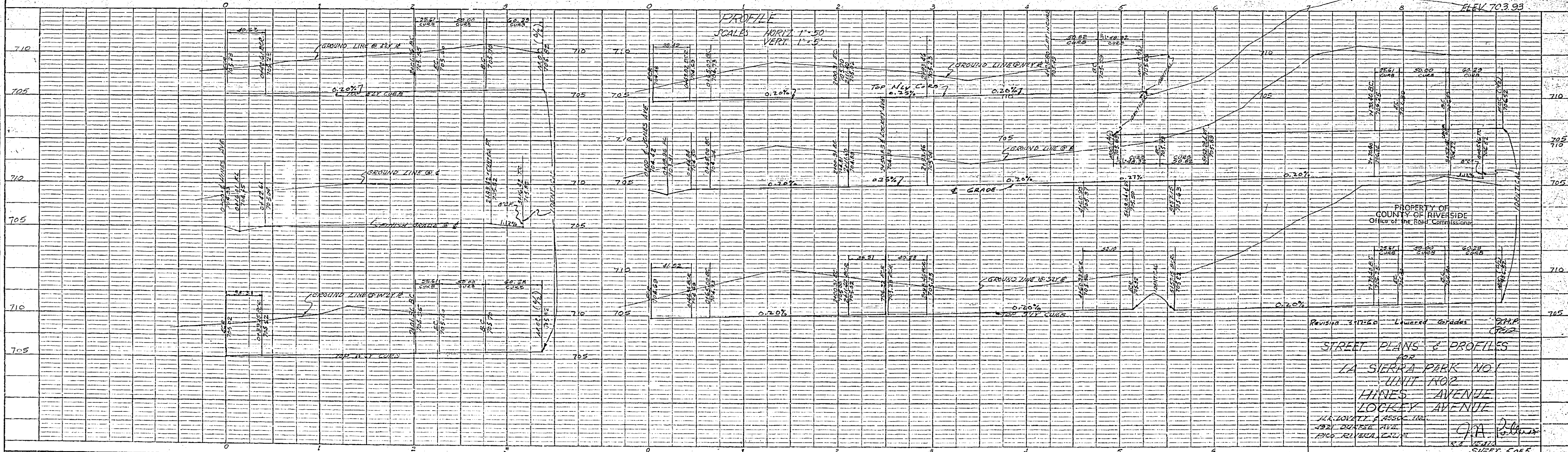
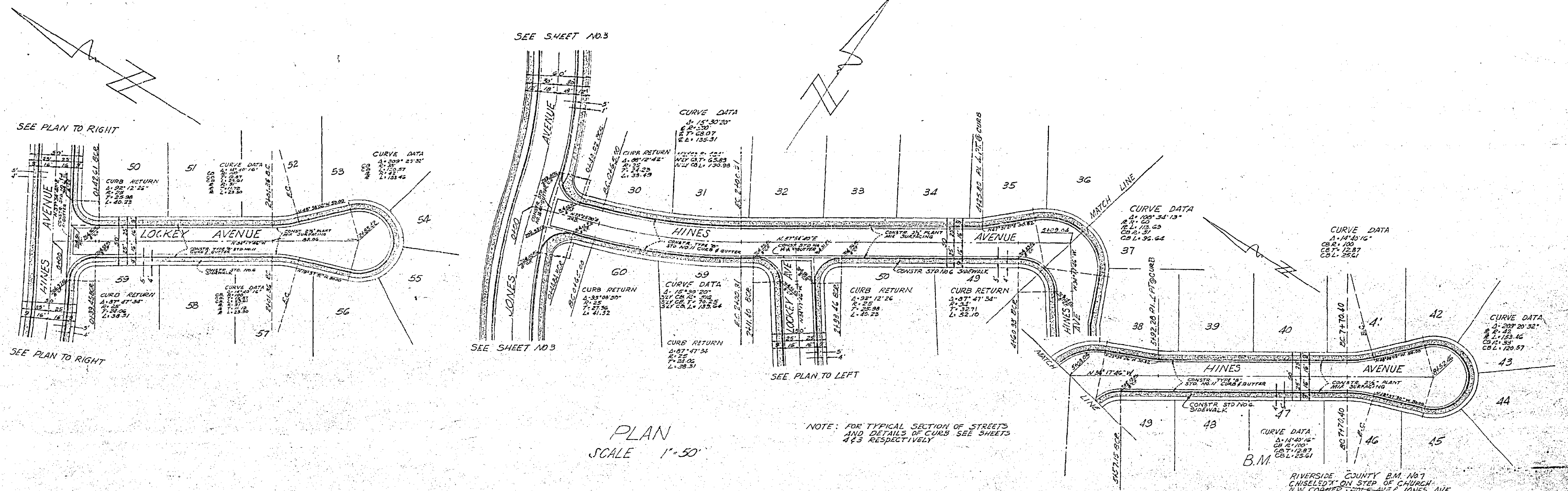
B.M. RIVERSIDE COUNTY B.M. No. 7
 Established on Step of Church N.W.
 Corner Hole Ave. & Jones Ave.
 ELEV 703.93



R-7610-2

DATE	
BY	
CHECKED	
APPROVED	
NO. OF SHEETS	
NO. OF THIS SHEET	
PLAN	
NOTE BOOK	
NOTE CHECKED	
NO.	

DATE	
BY	
CHECKED	
APPROVED	
NO. OF SHEETS	
NO. OF THIS SHEET	
PROFILE	
NOTE BOOK	
NOTE CHECKED	
NO.	



PLANS - PROFILE G. F. & R. E. STANFORD
KEMFEL & ESSER CO., NEW YORK
S. E. CO. NO. 345-1

R7810