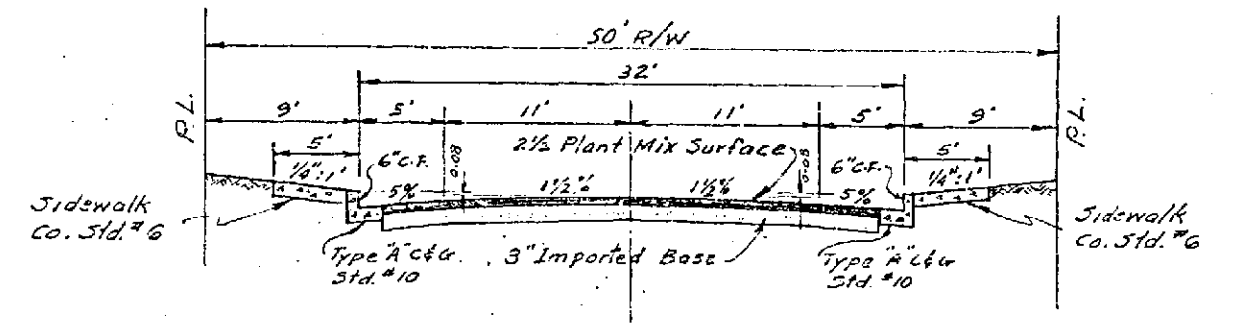
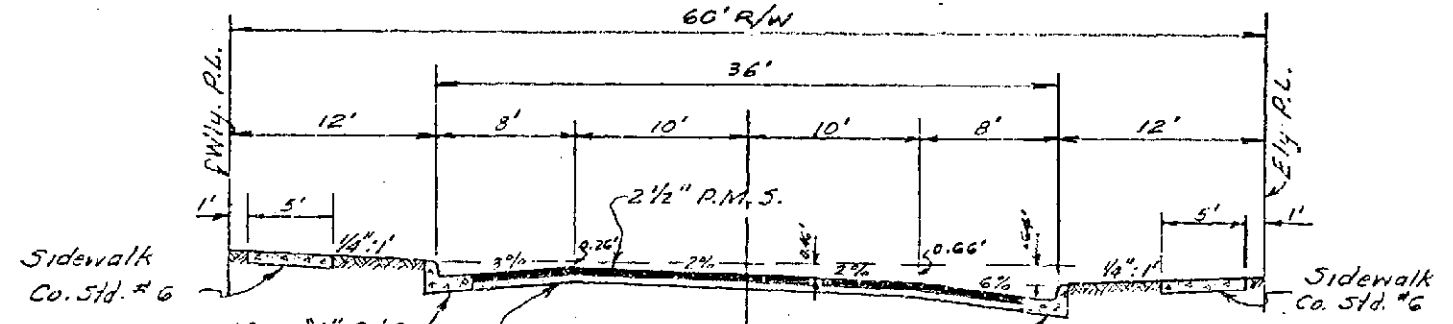
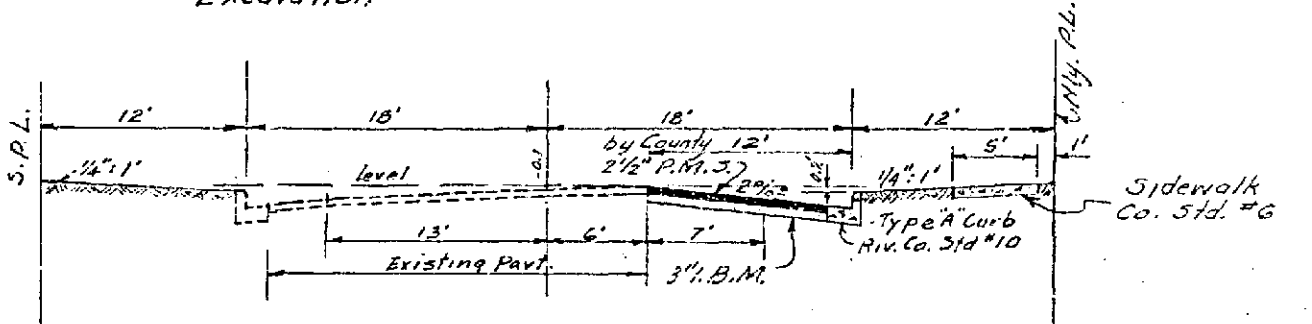


CURB RETURN DATA			
a	R	T	L
1	23°34'45"	25'	2670
2	86°34'15"	25'	2333
3	86°34'15"	25'	2333
4	23°25'45"	25'	2654

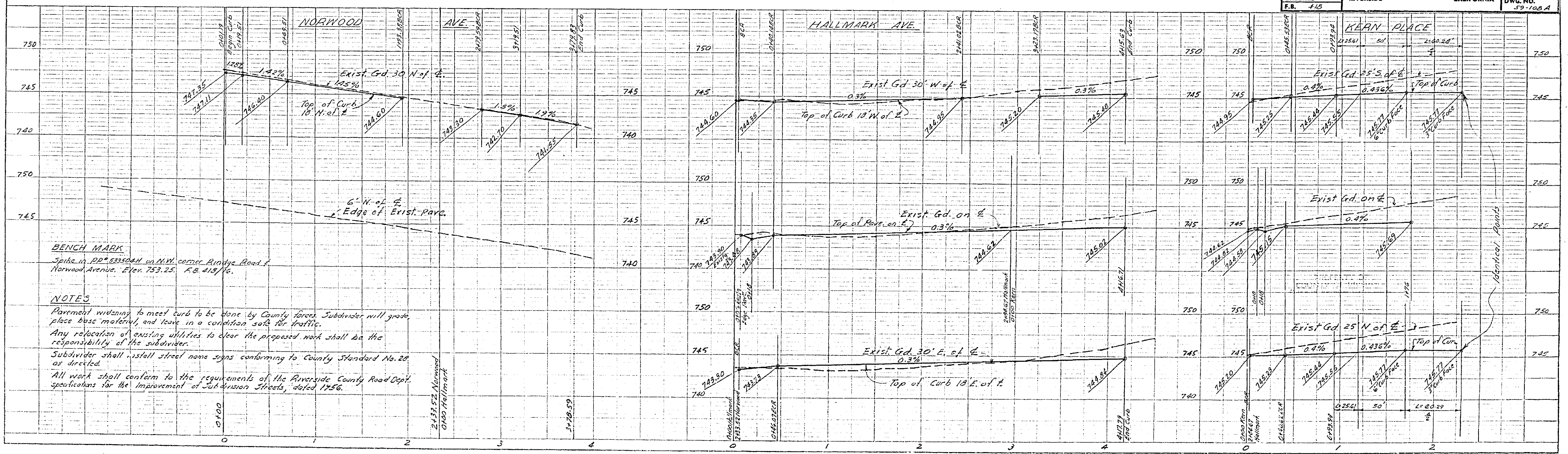
QUANTITY ESTIMATE

2 1/2" P.M.S. by Subdivider 19,900 sq. ft.
 2 1/2" P.M.S. by County 3,975 sq. ft.
 Type "A" Curb & Gutter 1,490 lin. ft.
 Concrete Curb Gutter 976 sq. ft.
 Concrete Sidewalk 7,183 sq. ft.
 Imported Base Material 221 cu. yds.
 Standard Barricade Excavation 1

Approved October 9, 1959
 A.C. KEITH
 Riverside County Road Commissioner
 By [Signature]
 Deputy



2 1/2" V.C.P. added - S.E. cor. Lot 17 to Norwood Gutter	3-10-60	ARC
REVISIONS		
DATE	BY	
NORWOOD ESTATES		
STREET PLAN & PROFILE		
NORWOOD AVE., HALLMARK ST. & KERN PLACE		
SCALE 1"=50'	DATE 9-9-59	W.O. 59-108
DRAWN	TRACED	SHEET
CHECKED	F.B. #13	OF 1 SHEETS
ALBERT A. WEBB ASSOCIATES CIVIL ENGINEERS		DWG. NO. 52-108-A
RIVERSIDE CALIFORNIA		



R-811