

CURB RETURN DATA

No.	A	R	T	L
1	24.29'	25	22.27	21.44
2	25.27'	25	23.09	22.29

QUANTITY ESTIMATE

2 1/2" R.M.S. by Subdivider	48,320 sq. ft.
2 1/2" R.M.S. by County	3,200 sq. ft.
Type A Curb & Gutter Std. #10	3,981 lin. ft.
Cross Gutters Std. #14	1,925 sq. ft.
Imported Base Material (9")	1,600 cu. yds.
Concrete Curb Sidewalk	18,930 sq. ft.
Barricade Std. #27	1
Excavation	5,040 cu. yds.
Type B Curb & Gutter Std. #11	230 lin. ft.

1st Revision Approved October 20, 1960
 By Paul J. Stewart Deputy
 3rd Revision Approved Dec. 21, 1960
 By Paul J. Stewart Deputy
 4th Revision Approved Feb. 3, 1961
 By Paul J. Stewart Deputy
 Approved May 17, 1960
 A. C. KEITH
 Riverside County Road Commissioner
 By Paul J. Stewart Deputy

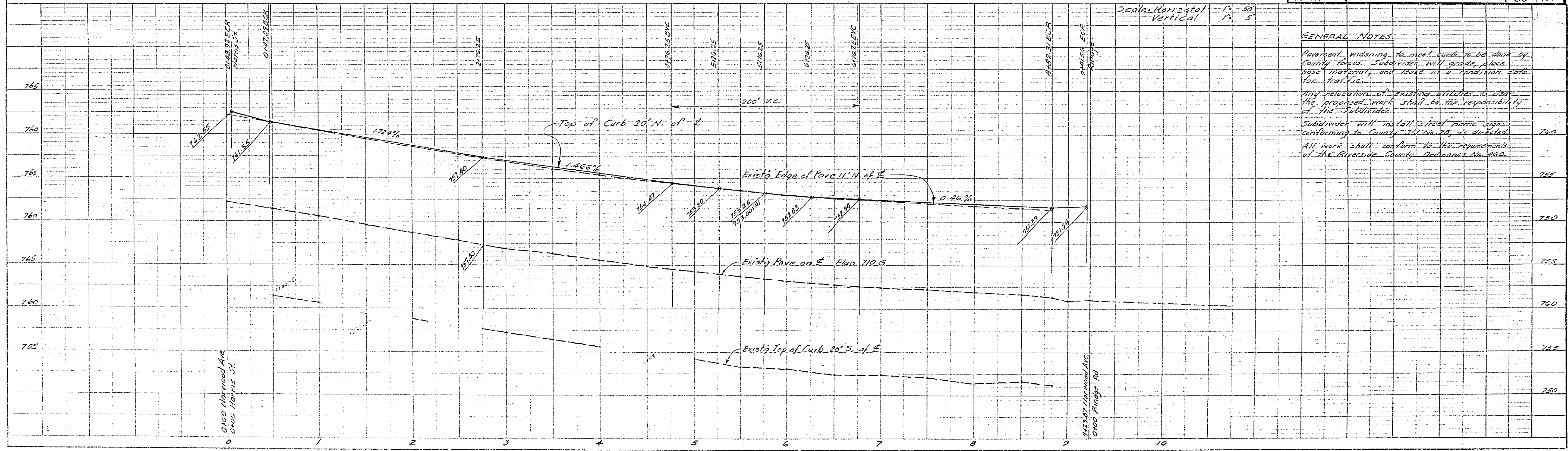
REVISIONS

NO.	DESCRIPTION	DATE	BY
1	Remove & replace curb return at Hill, Oak, Orange & Harris, install x-gutter, remove & replace paving	3-10-61	JMS
2	Grade Revised Leon Ct. & Alice Ct.	12-22-60	RELI
3	Type B Curb & Gutter on Harris from Norwood to Flower	10-20-60	RELI
4	Cross Gutter Added - Norwood & Harris	10-19-60	RELI

MYERSCOUGH SUBDIVISION UNIT No. 1
 STREET PLAN & PROFILE
 NORWOOD AVENUE

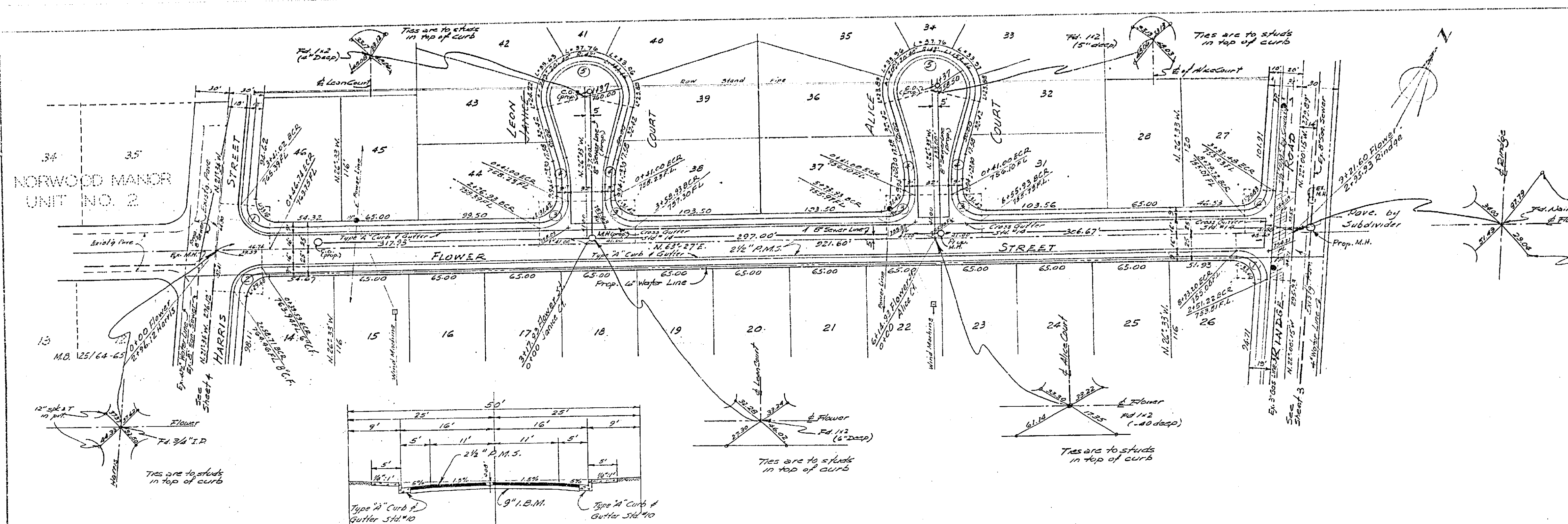
SCALE 1"=50'
 DATE Feb. 22, 1960
 DRAWN S.D.
 CHECKED R.W.
 F.B. 431
 W.D. 60-11 SHEET
 OF 4 SHEETS
 DWG. NO. 60-21A
 ALBERT A. WEBB ASSOCIATES
 CIVIL ENGINEERS
 RIVERSIDE, CALIFORNIA

Bench Mark: R.R. spike in RR #33504-H.W. Cor.
 Ridge Rd. & Norwood Ave.
 Elev. 753.25 PB 431/p.a



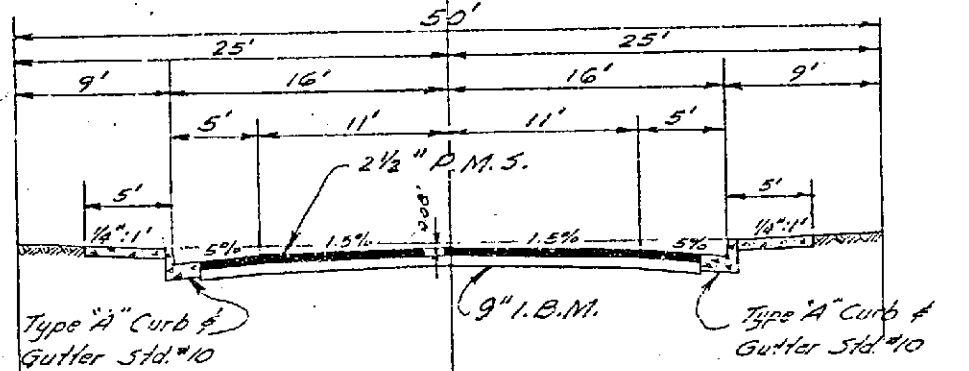
GENERAL NOTES
 Pavement widening to meet curb to be done by County. Subdivider will grade, place base materials and leave in a condition safe for traffic.
 Any relocation of existing utilities to clear the proposed work shall be the responsibility of the Subdivider.
 Subdivider will install street name signs conforming to County Std. No. 20, as directed.
 All work shall conform to the requirements of the Riverside County Ordinance No. 400.

R-813 7/10/61



CURB RETURN DATA

No.	1	2	3	4
(1)	24'21"	25	27.27	26.44
(2)	27'02"	25	29.1	27.10
(3)	20'00"	25	25.00	23.27
(4)	17'40'00"	100	12.87	25.61
(5)	20'5'20'40"	33	23.07	22.27
(6)	25'2'15"	25	22.07	22.27
(7)	24'2'15"	25	22.7	21.25

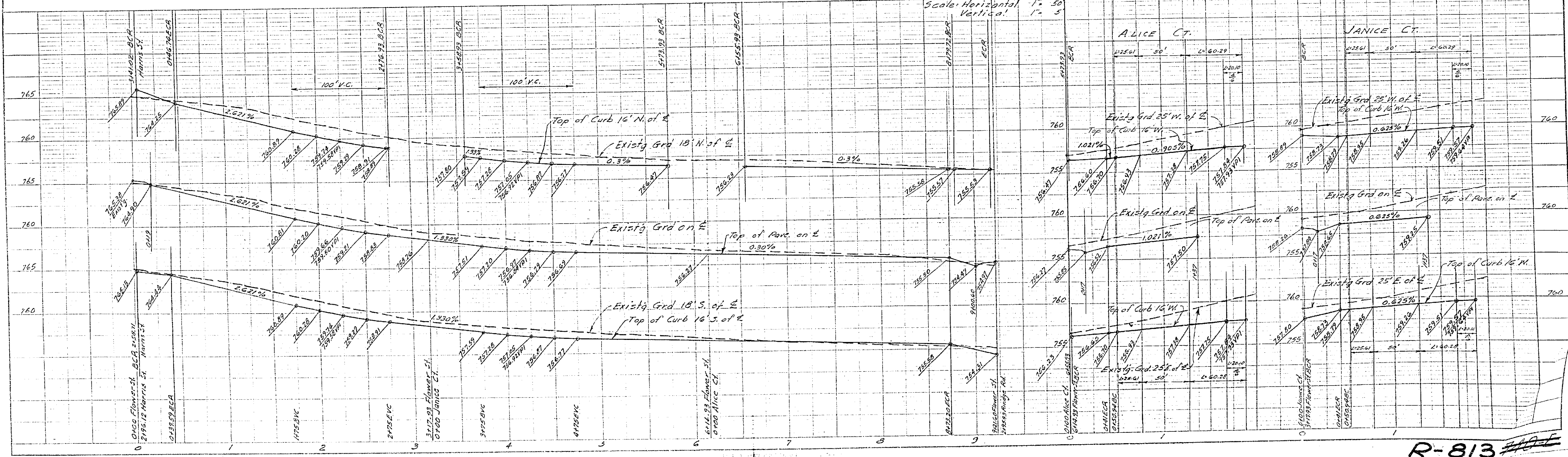


TYPICAL SECTION
FLOWER STREET
JANICE & ALICE COURT

Grades Revised Leon Ct. & Alice Ct.	12-12-60	REC'D
REVISIONS	DATE	BY
MYERSCOUGH SUBDIVISION UNIT No. 1		
STREET PLAN & PROFILE FLOWER STREET LEON COURT & ALICE COURT		
SCALE 1"=50'	DATE Feb. 20, 60	W.O. 60-21
DRAWN S.D.	CHECKED	SHEET 2
TRACED	OF 4 SHEETS	
CHECKED	DWG. NO. 60-21A	
E.P. 331		

ALBERT A. WEBB ASSOCIATES
CIVIL ENGINEERS
RIVERSIDE CALIFORNIA

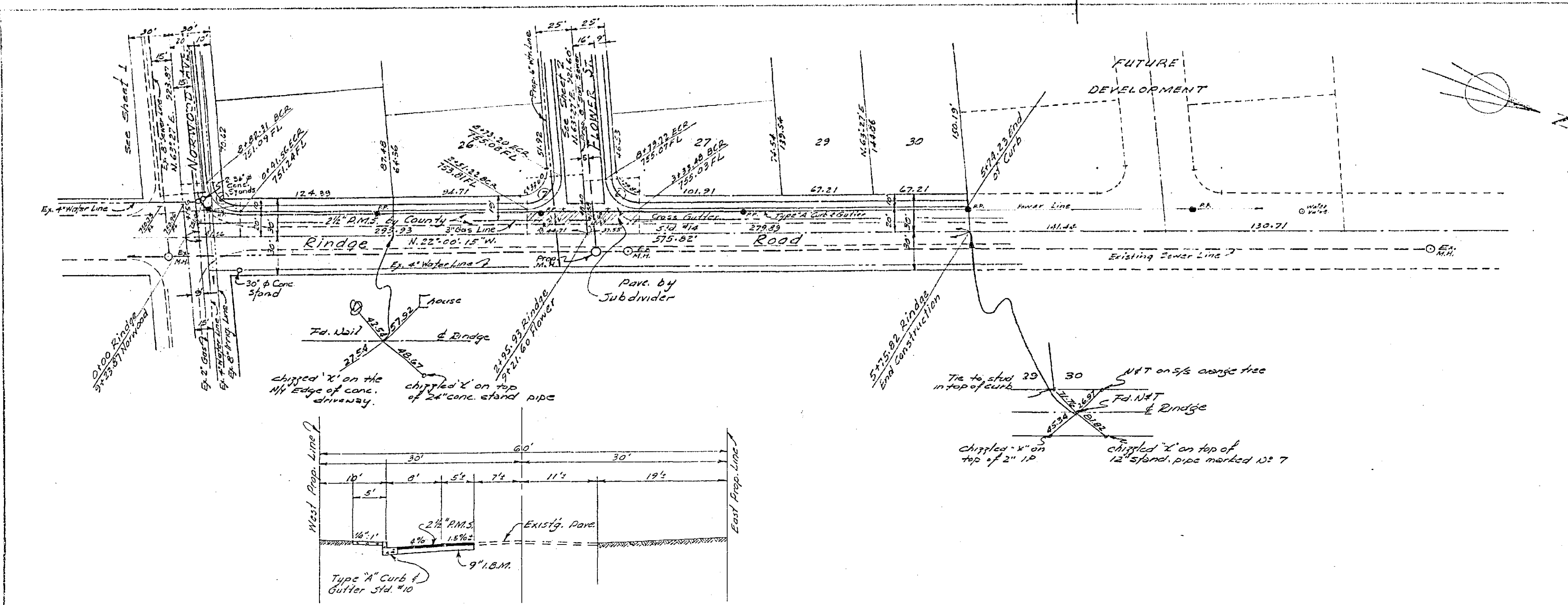
Bench Mark: R.R. spike in P.R. 533504-M NW Cor.
Rindge Rd. & Norwood Ave.
Elev = 753.25 FB 431/PA



R-813

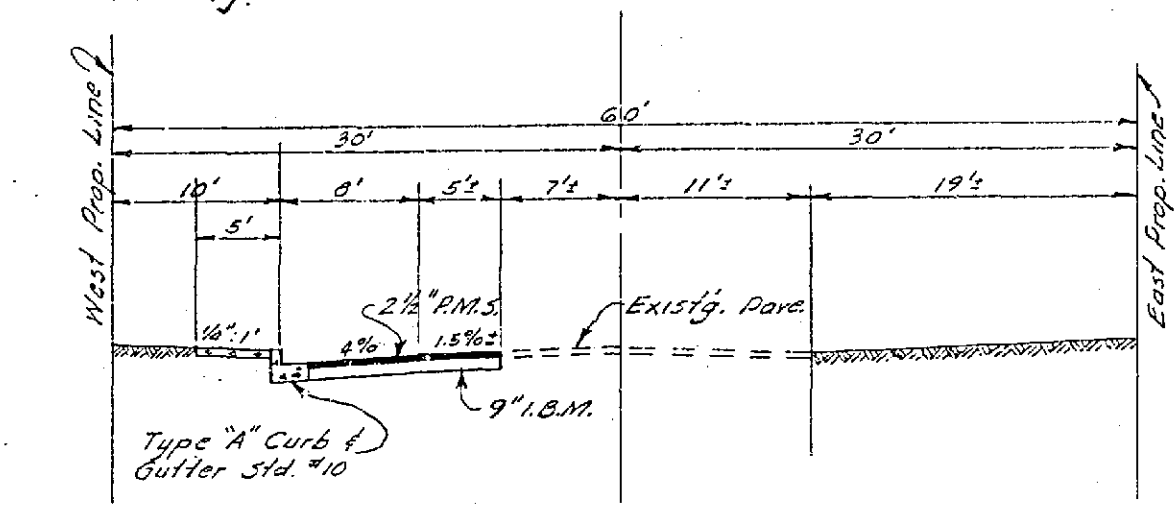
PLAN
NOTED
NOTE BOOK
ALBANY, OHIO
NO. 100

PROFILE
SCALE
VERTICAL
1"=5'



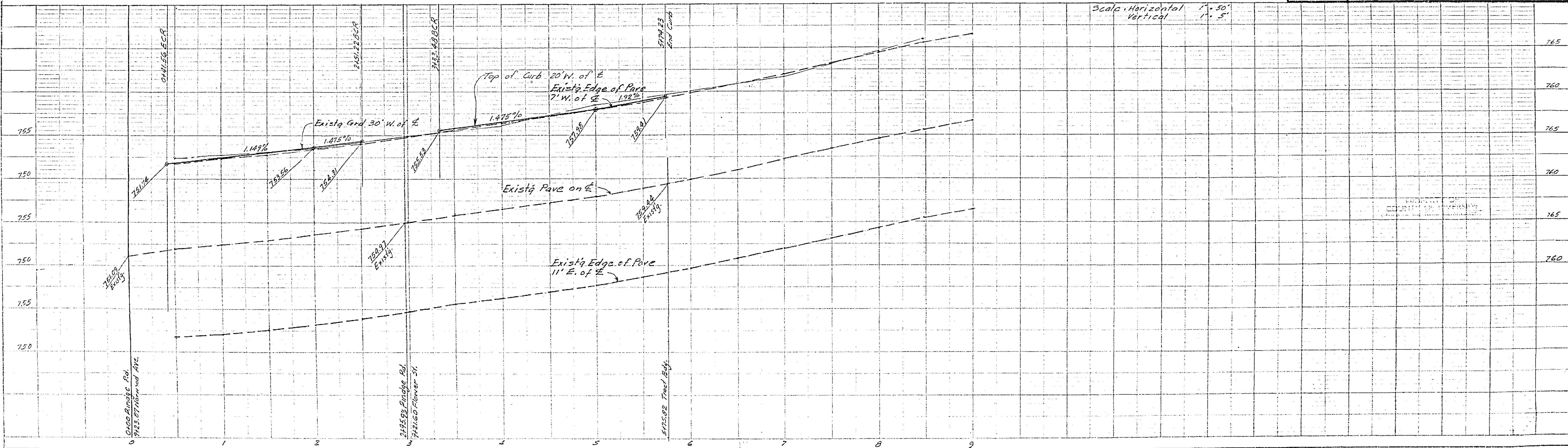
CURB RETURN DATA

No.	A	R	T	L
1	85°57'15"	25'	19.09	37.29
2	84°30'45"	25'	27.07	41.25



TYPICAL SECTION
RINDGE ROAD

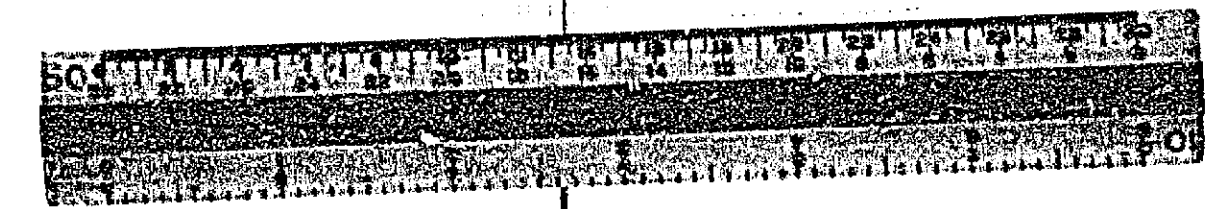
REVISIONS		DATE	BY
MYERSCOUGH SUBDIVISION UNIT No. 1			
STREET PLAN & PROFILE			
RINDGE ROAD			
SCALE 1"=50'	DATE Feb 22 60	DRAWN S.D.	TRACED
CHECKED	F.B. 431	ALBERT A. WEBB ASSOCIATES CIVIL ENGINEERS	RIVERSIDE CALIFORNIA
Bench Mark: R.R. spike in P.R. #533504-N W/W Cor. Rindge Rd & Norwood Ave. Elev. 753.25 FS 431/PA			W.D. 60-41 SHEET 3 OF 4 SHEETS DWG. NO. 60-81A

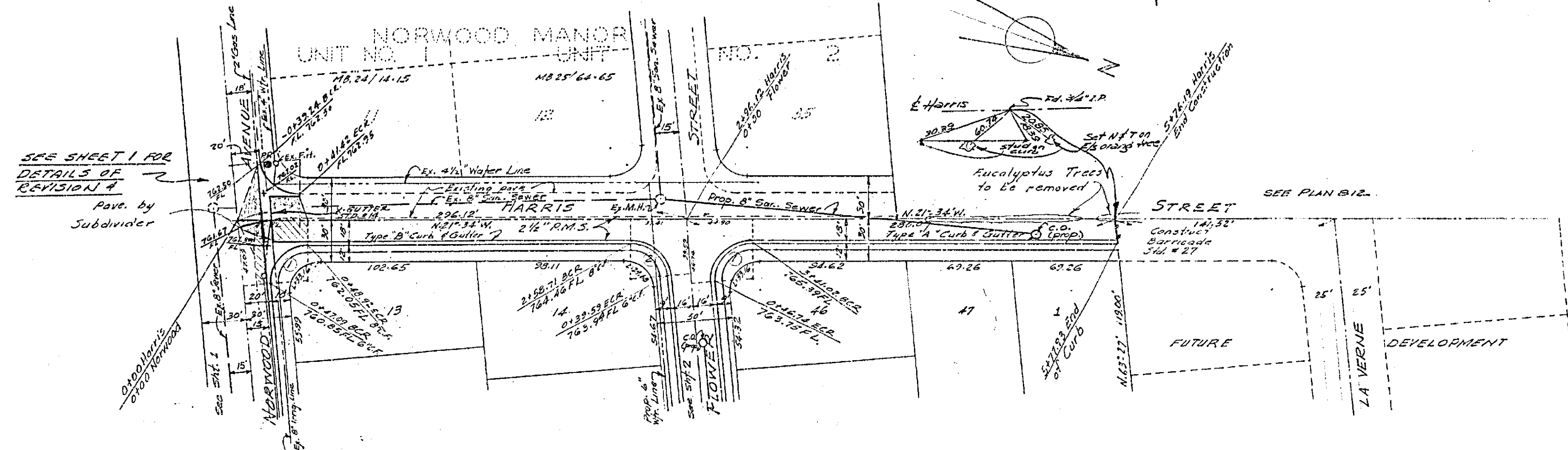


R-813 740 E

PLAN
NOTE: WORK
BY CONTRACTOR
CHECKED BY
DATE

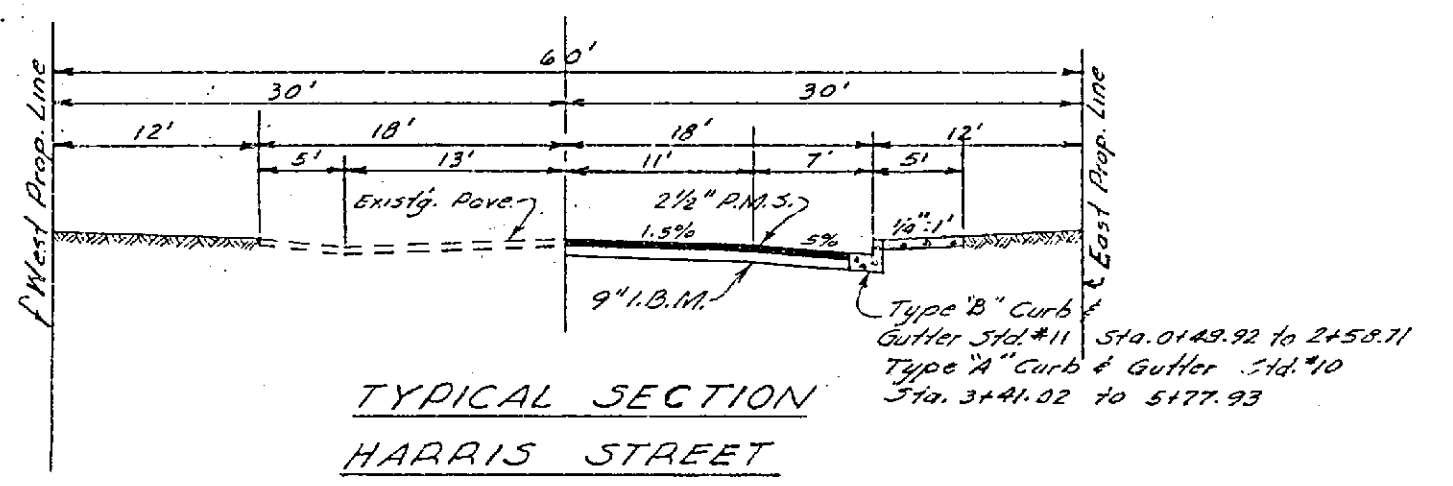
PROFILE
DATE
BY





CURB RETURN DATA

No.	A	B	C	L
(1)	24.52'	25'	27.27'	21.64'
(2)	25.01'	25'	22.91'	23.10'

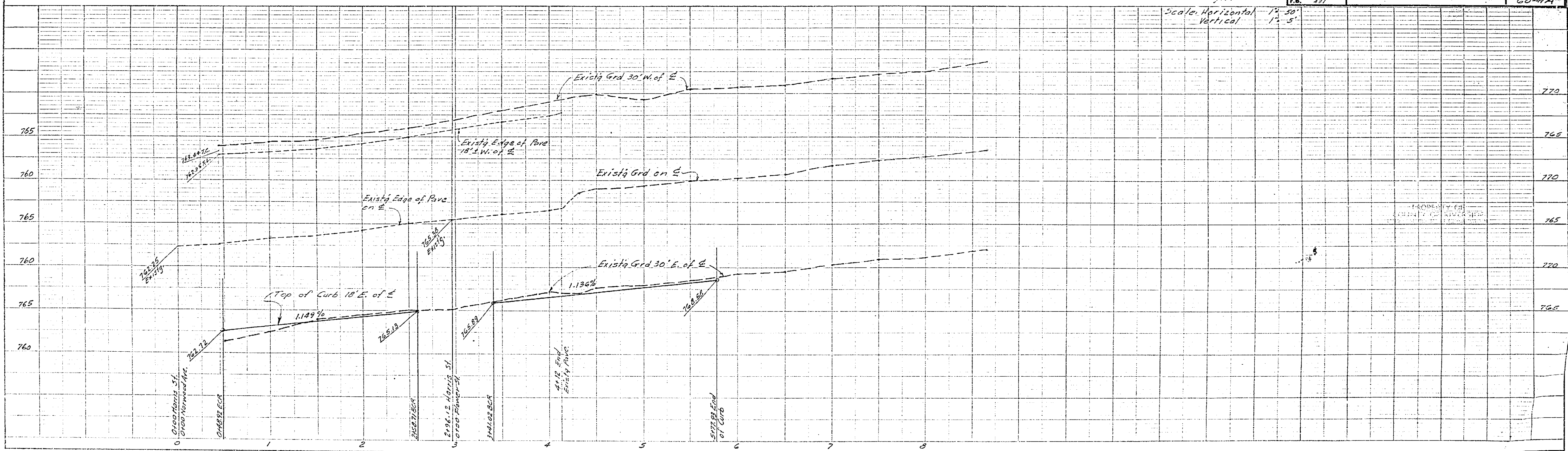


REVISIONS	DATE	BY
1 REMOVE & REPLACE CURB RETURN AT NW COR. NORWOOD MANOR	3.10.61	JTK
2 TYPE B CURB & GUTTER ON HARRIS ST. FROM NORWOOD MANOR	10-20-60	ARC
3 CROSS GUTTER ADDED - NORWOOD & HARRIS	10-19-60	REC

MYERSCOUGH SUBDIVISION UNIT No. 1
 STREET PLAN & PROFILE
 HARRIS STREET

SCALE 1" = 50'	ALBERT A. WEBB ASSOCIATES CIVIL ENGINEERS	W.O. 60-41 SHEET
DATE Feb 29, 60	RIVERSIDE CALIFORNIA	OF 4 SHEETS DWG. NO. 60-41-A
DRAWN J.D.		
CHECKED F.B.		

Bench Mark: R.R. spike in P.A. #33504-11 NW Cor.
 Rindge Rd. & Norwood Ave.
 Elev. = 753.25 18.03/14.4



R-813 748 E

PLAN
 NOTE BOOK ACCIDENT CHECKED
 NO. 10

PROFILE
 14-50
 1'-5"