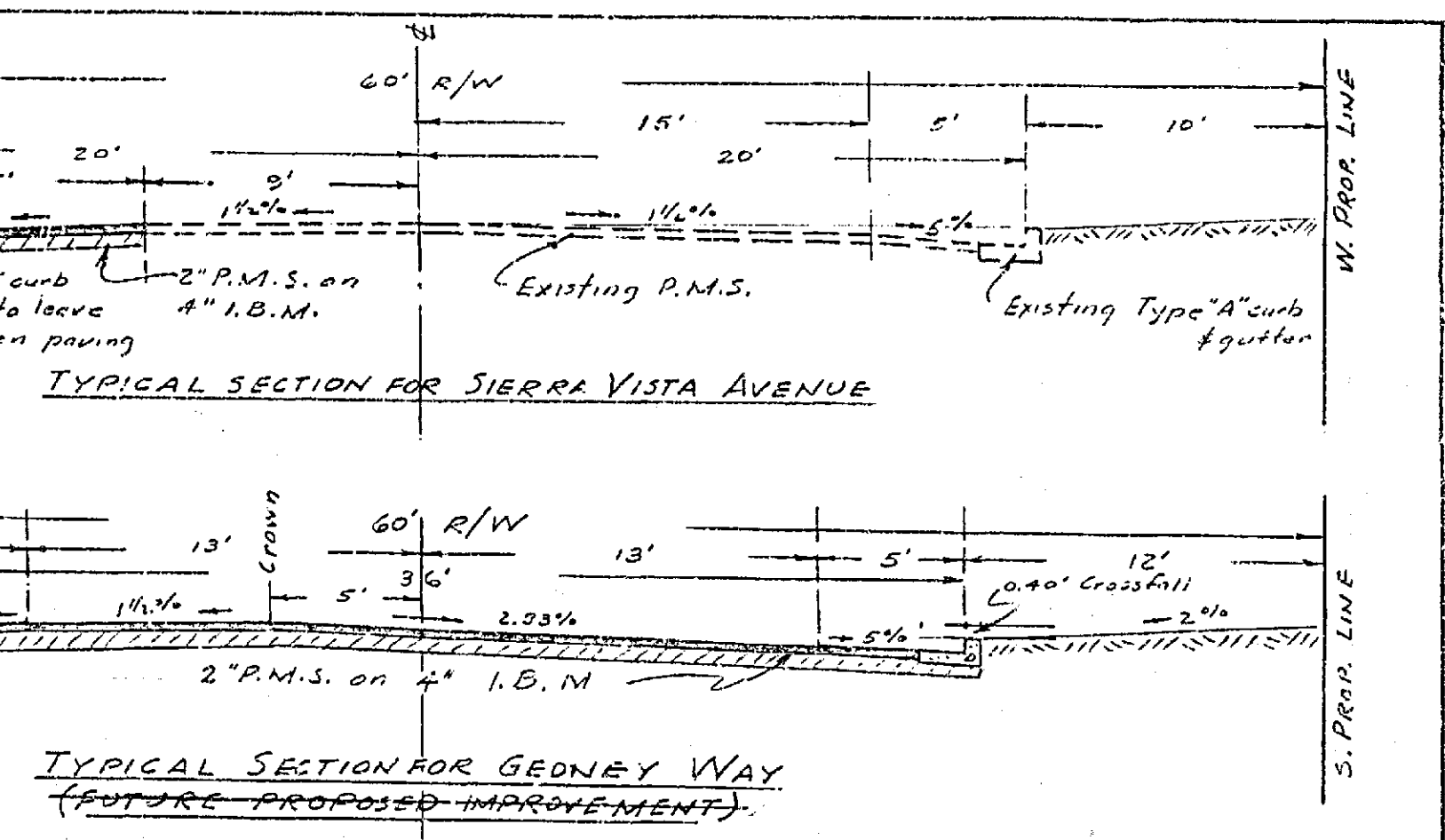
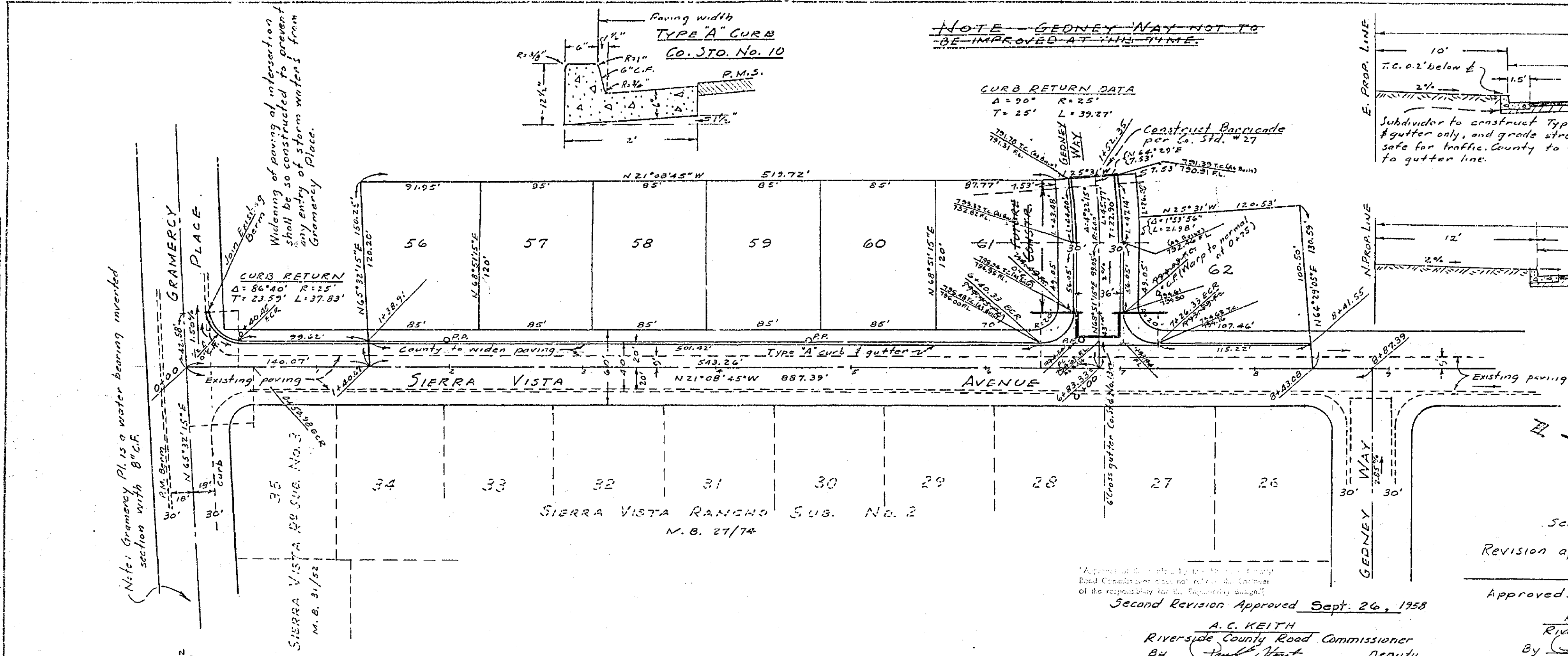


PLAN	DATE	BY
NOTE BOOK		
NO.		



REVISIONS	DATE	BY
A Added to Drive Elev.	5-11-58	JAC
B Revised to include Gedney Way	9-13-58	ACC
C Revised to delete Gedney Way	2-24-58	WPS

PORTIONS OF LOTS 68 B, BLOCK 64, LA SIERRA TRACT NO. 2, M.B. 7/26, RECORDS OF RIVERSIDE COUNTY, RIVERSIDE COUNTY, CALIFORNIA.

STREET PLAN & PROFILE

SIERRA VISTA AVE. & GEONEY WAY

SIERRA VISTA RANCHO SUBDIVISION No. 4

SCALE 1"=50'

DATE 1-28-58

DRAWN *gac*

TRACED

CHECKED

F.B.

ALBERT A. WEBB ASSOCIATES
CIVIL ENGINEERS
RIVERSIDE CALIFORNIA

WO. 57-225
SHEET 1
OF 1 SHEETS
DWG. NO. 57-225-A

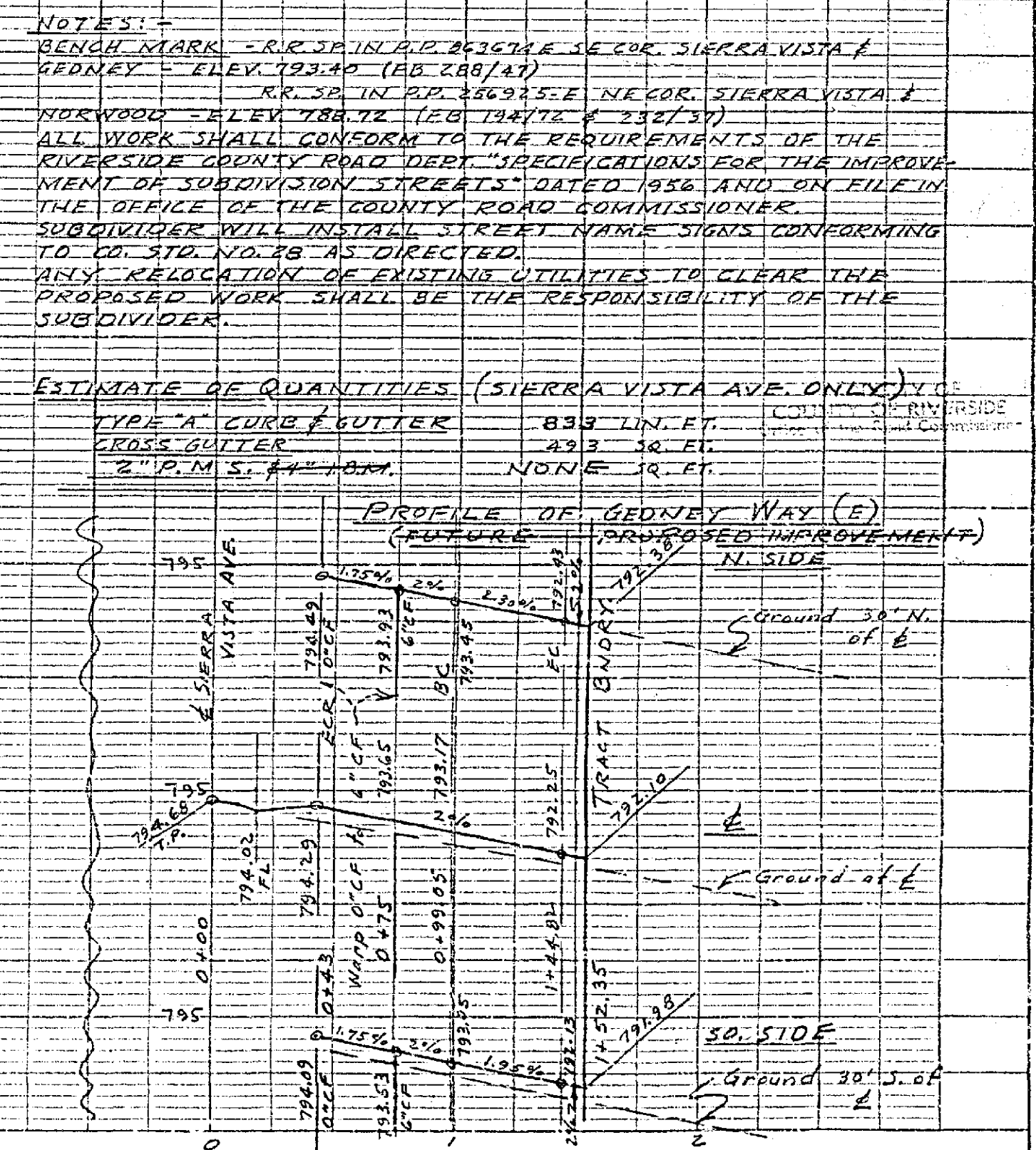
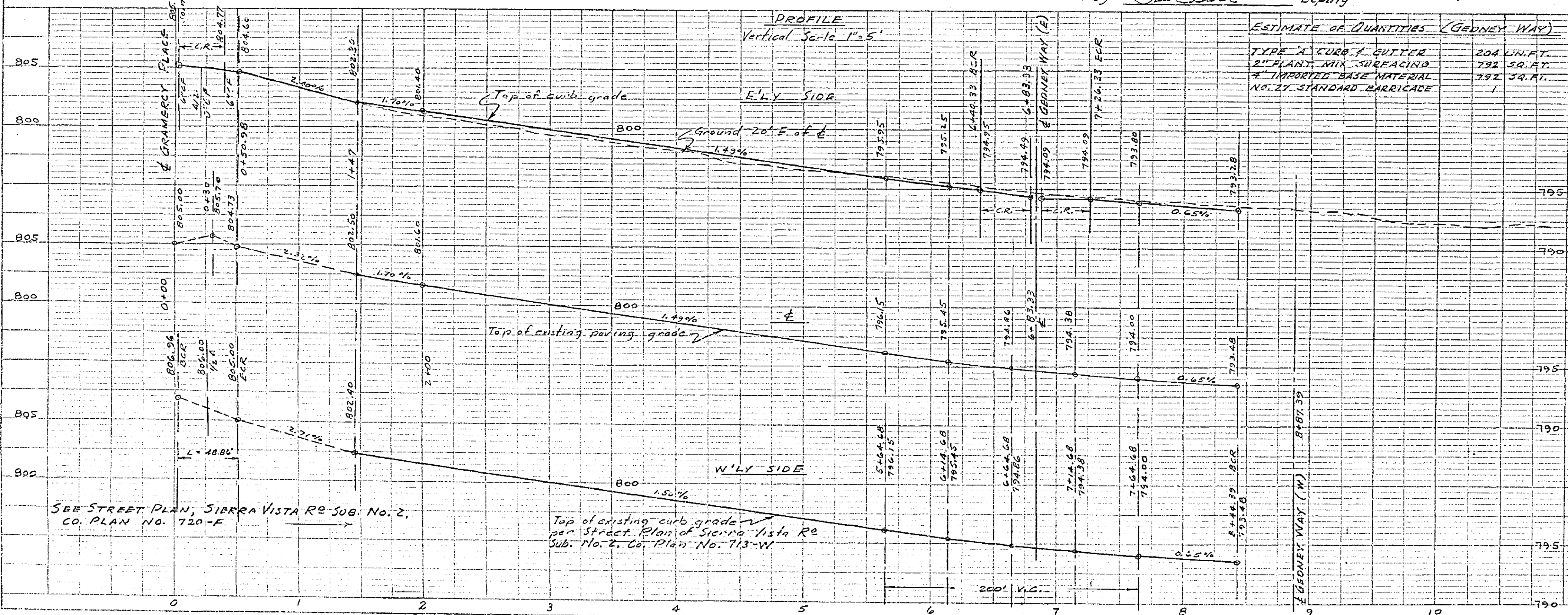
Scale 1"=50'

Revision approved March 4, 1958 by *[Signature]*

Approved January 31, 1958

A.C. KEITH
Riverside Co. Road Commissioner
By *[Signature]* Deputy

Second Revision Approved Sept. 26, 1958
A.C. KEITH
Riverside County Road Commissioner
By *[Signature]* Deputy



PROFILE	DATE	BY
NOTE BOOK		
NO.		

SEE STREET PLAN, SIERRA VISTA RE SUB. NO. 2, CO. PLAN NO. 720-F

Top of existing curb grade per Street Plan of Sierra Vista Re Sub. No. 2, Co. Plan No. 713-W