

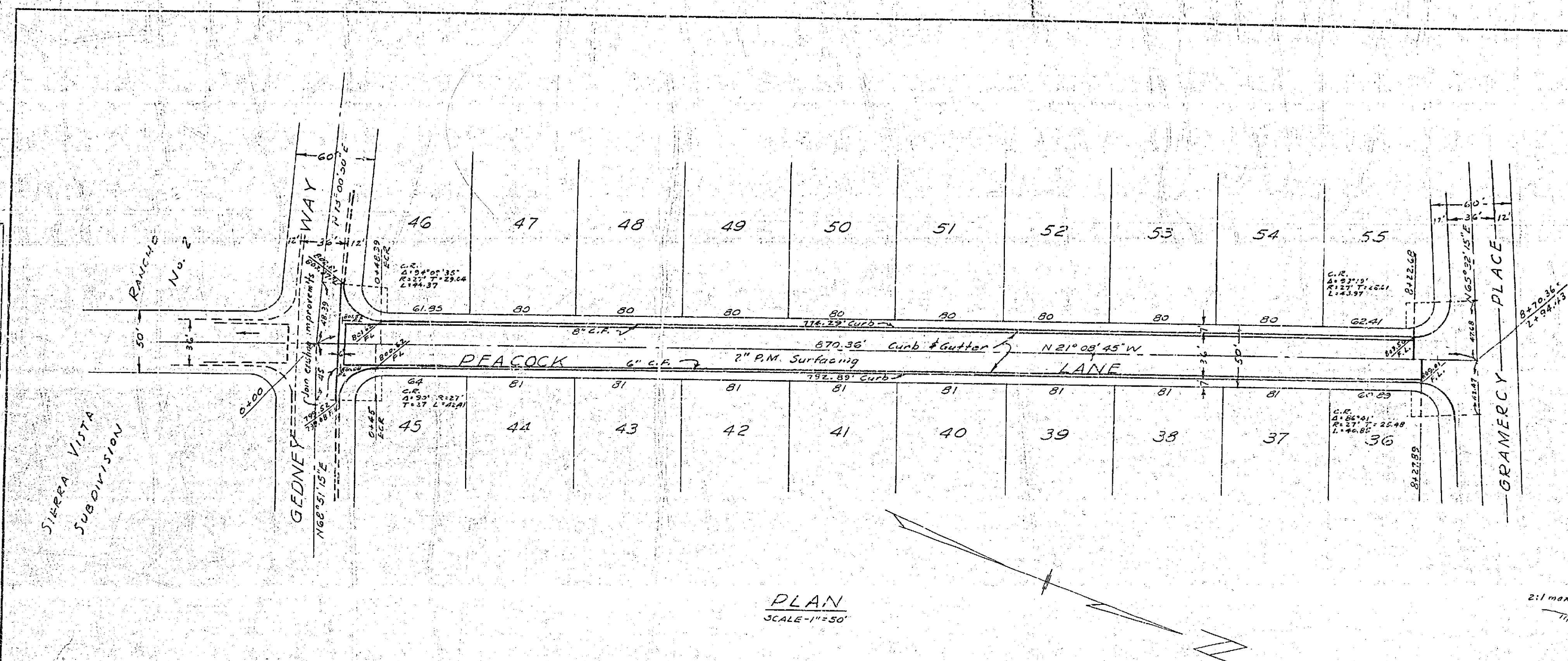
STREET PLAN AND PROFILE
OF
PEACOCK LANE
IN
SIERRA VISTA RANCHO
SUBDIVISION NO. 3
RIVERSIDE COUNTY CALIFORNIA

BY
ALBERT A. WEBB ASSOCIATES
CIVIL ENGINEERS
RIVERSIDE CALIFORNIA
JULY 1956

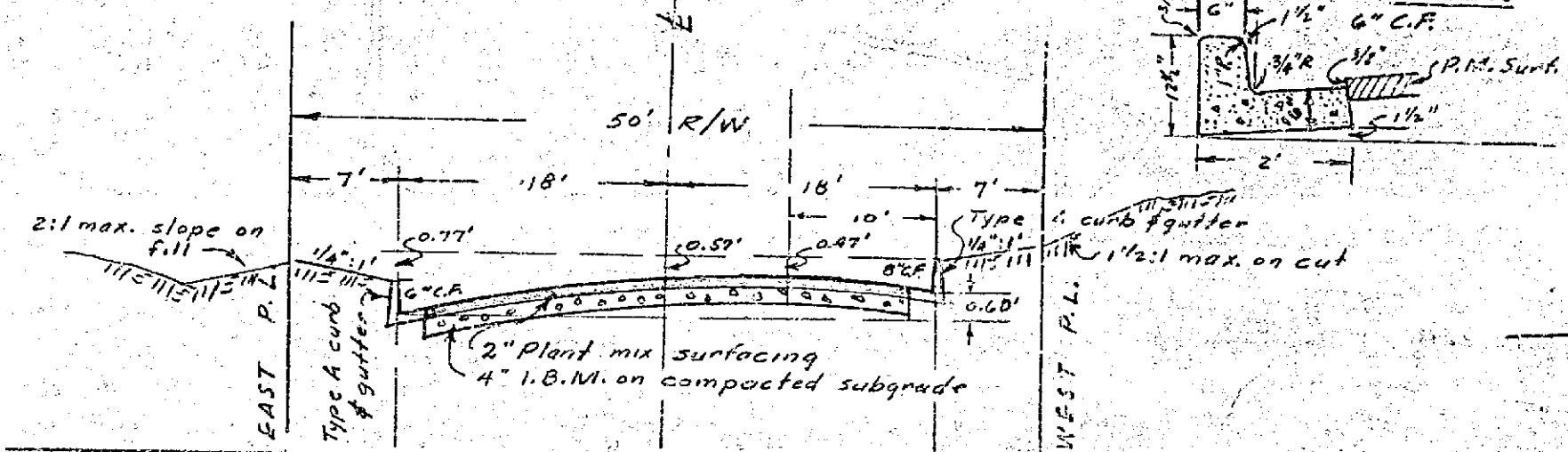
Revised July 18, 1956 (to include 6" curb type curb) R.D. Russell
Approved July 5, 1956
A. KEITH
Riverside Co. Road Commissioner
By R.D. Russell Deputy

PLAN

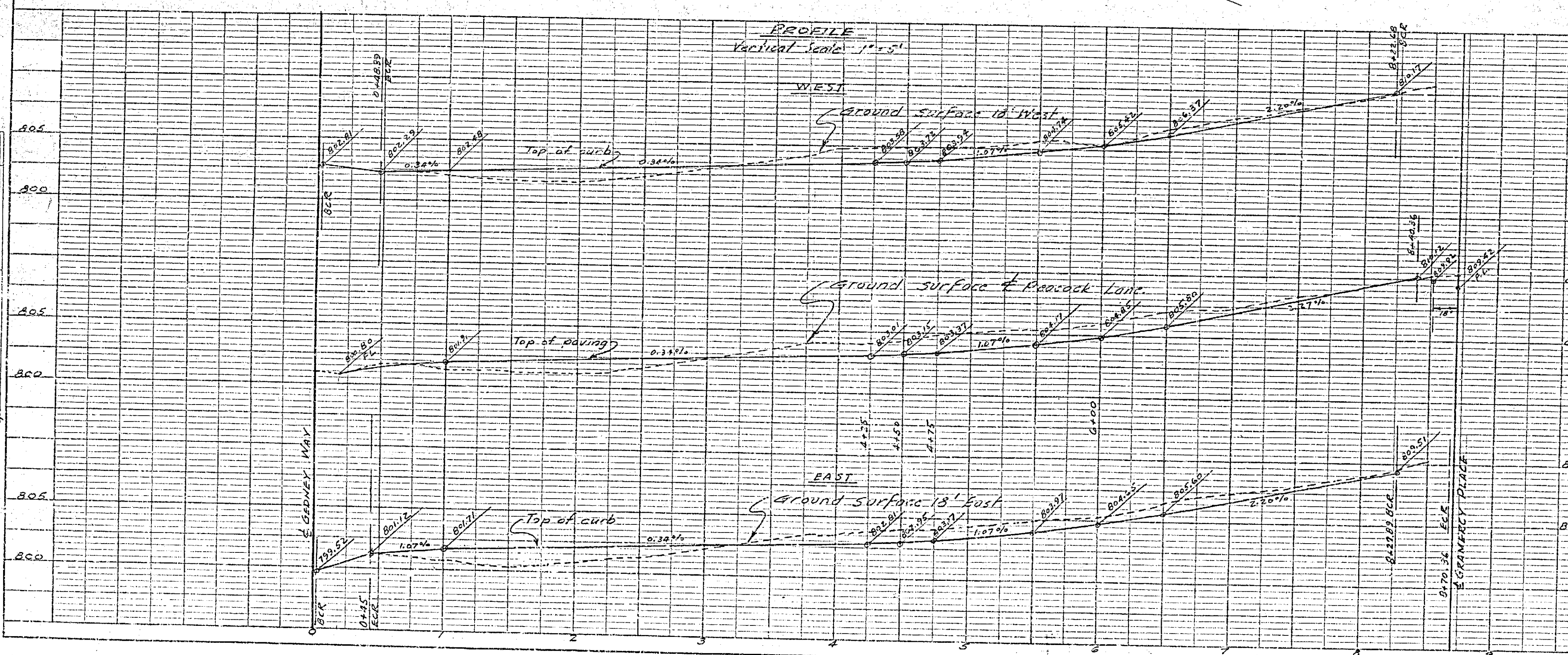
DATE	BY
7/22/56	A.W.
REVISION	BY
NO. 1	A.W.
NO. 2	A.W.
NO. 3	A.W.
NO. 4	A.W.
NO. 5	A.W.
NO. 6	A.W.
NO. 7	A.W.
NO. 8	A.W.
NO. 9	A.W.
NO. 10	A.W.



TYPICAL SECTION OF PEACOCK LANE



PROFILE
Vertical Scale 1"=5'



B.M. SPIKE E.S. BRANZATTI N.W. COR. HOLDEN & NORWOOD 730.20
B.M. SPIKE W.S. P. 84674 E. S22 COR. GEDNEY & SIERRA VISTA 753.40
CONSTRUCTION TO BE IN ACCORDANCE WITH SPECIFICATIONS
OF NEW SUBDIVISION, STREET 100' WIDE COUNTY OF RIVERSIDE
SIDE DATED 1953, AND ANY REVISIONS THEREOF ON FILE
IN THE OFFICE OF THE COUNTY ROAD COMMISSIONER

ESTIMATE OF QUANTITIES

TYPE A CURB & GUTTER 6" C.R.	91.6 LIN. FT.
TYPE A CURB & GUTTER 6" C.R.	174 LIN. FT.
CURB ONLY 6" C.R.	567 LIN. FT.
CROSS GUTTER ASPHALT	352 SQ. FT.
2" P.M. PATCHING	44,524 SQ. FT.
2" P.M. SURFACING	44,524 SQ. FT.
IMPERVIOUS BASE MATERIAL	254 LIN. FT.
BERM TYPE CURB	1750 CU. YD.
EARTHWORK CUT	330 CU. YD.
EARTHWORK FILL	330 CU. YD.

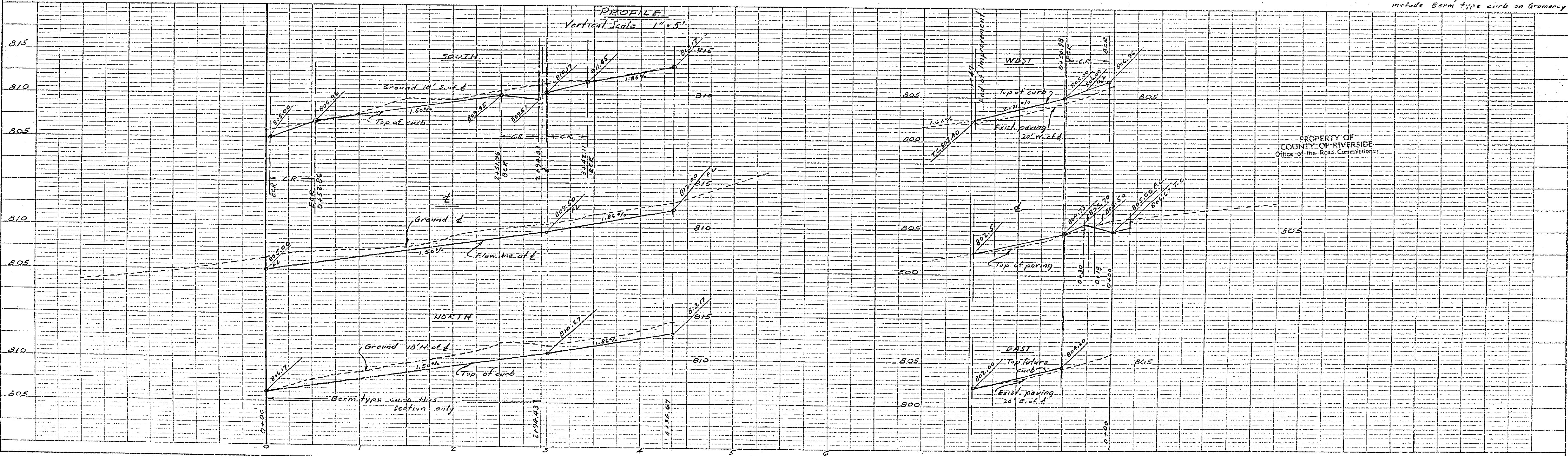
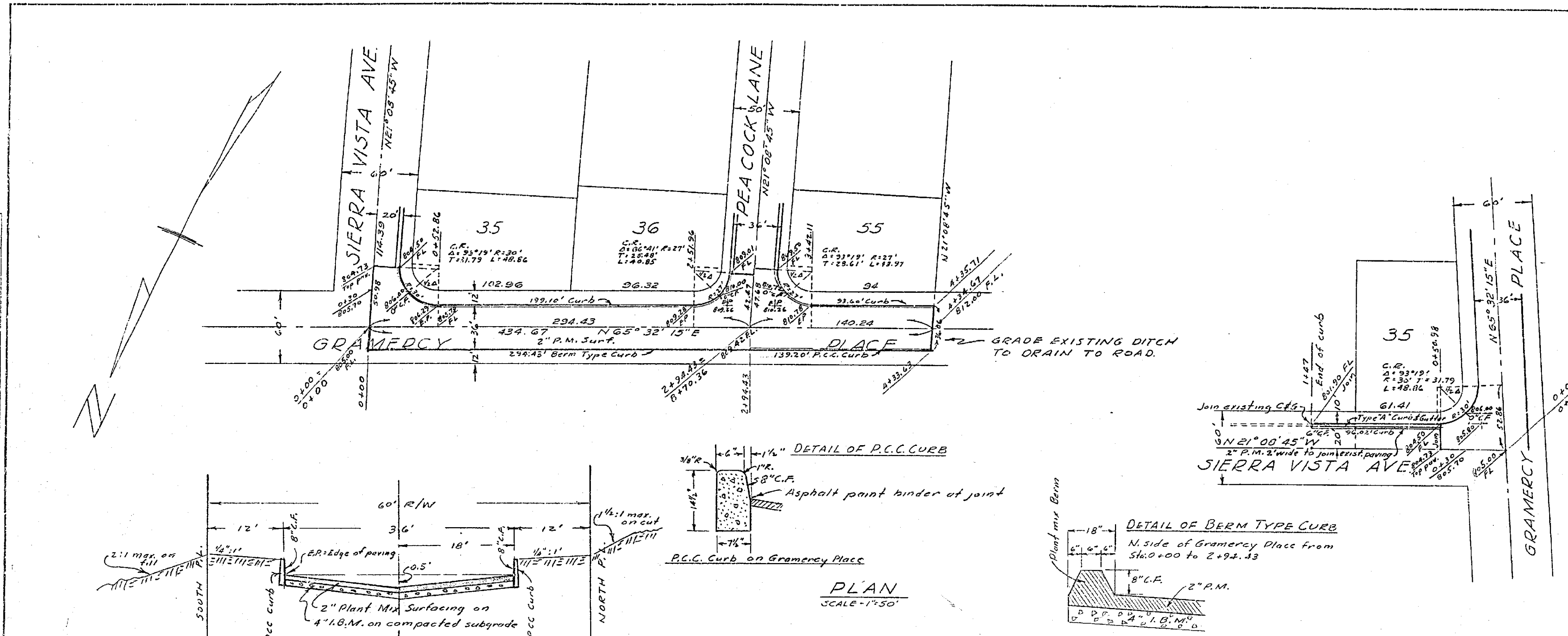
UTILITY RELOCATIONS TO CLEAR WORK TO BE DONE BY
SUBDIVIDER
STREET NAME SIGNS TO BE INSTALLED AS DIRECTED
BY U.S. ROAD DEPT. IN ACCORDANCE WITH CO. 110.128.

COUNTY OF RIVERSIDE
Office of the Road Commissioner

STREET PLAN AND PROFILE
OF
GRAMERCY PLACE AND SIERRA VISTA AVE.
IN
SIERRA VISTA RANCHO
SUBDIVISION NO. 3
RIVERSIDE COUNTY CALIFORNIA

BY
ALBERT A. WEBB ASSOCIATES
CIVIL ENGINEERS
RIVERSIDE CALIFORNIA
JULY 1956

PLAN	NO. 32-46
DATE	7-27-56
BY	F.A.C.
NOTE BOOK	
NO.	



PROFILE	NO. 32-46
DATE	7-27-56
BY	F.A.C.
NOTE BOOK	
NO.	