

PLAN AND PROFILE
FOR STREET IMPROVEMENTS
OF
MAGNOLIA AVENUE
IN
SKYLARK TERRACE
IN
RIVERSIDE COUNTY CALIFORNIA

THESE PLANS WERE PREPARED IN THE OFFICE OF
THE ACTION ENGINEERING COMPANY UNDER THE
SUPERVISION OF:

James R. Boudreau
REGISTERED CIVIL ENGINEER N° 2267
DATE July 10, 1956

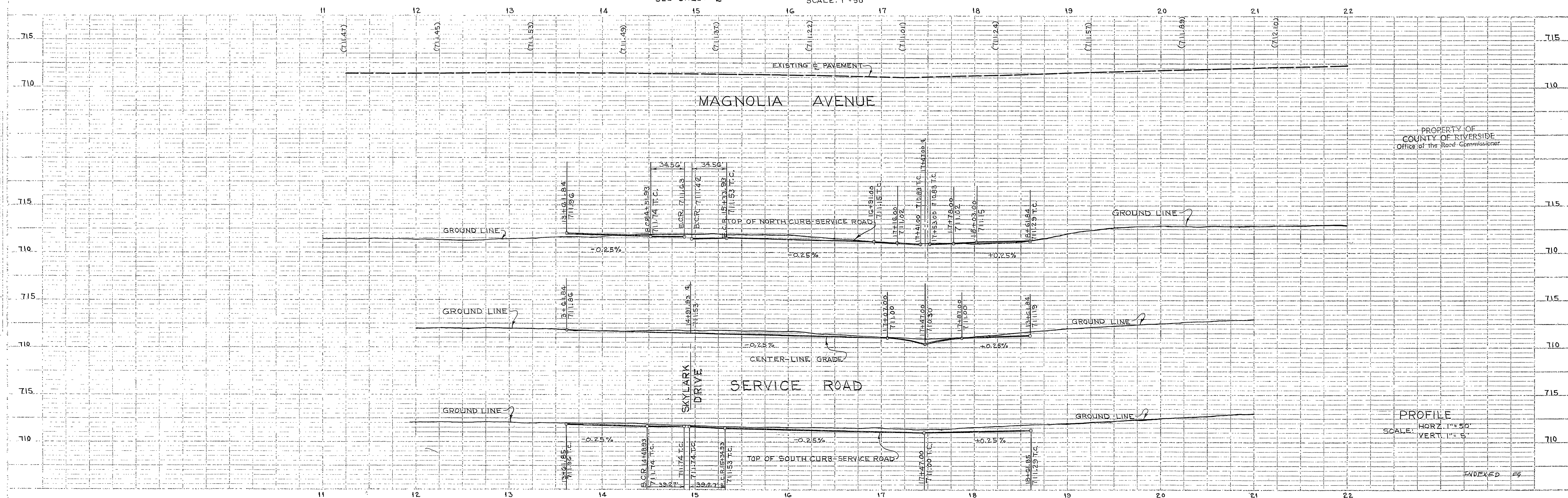
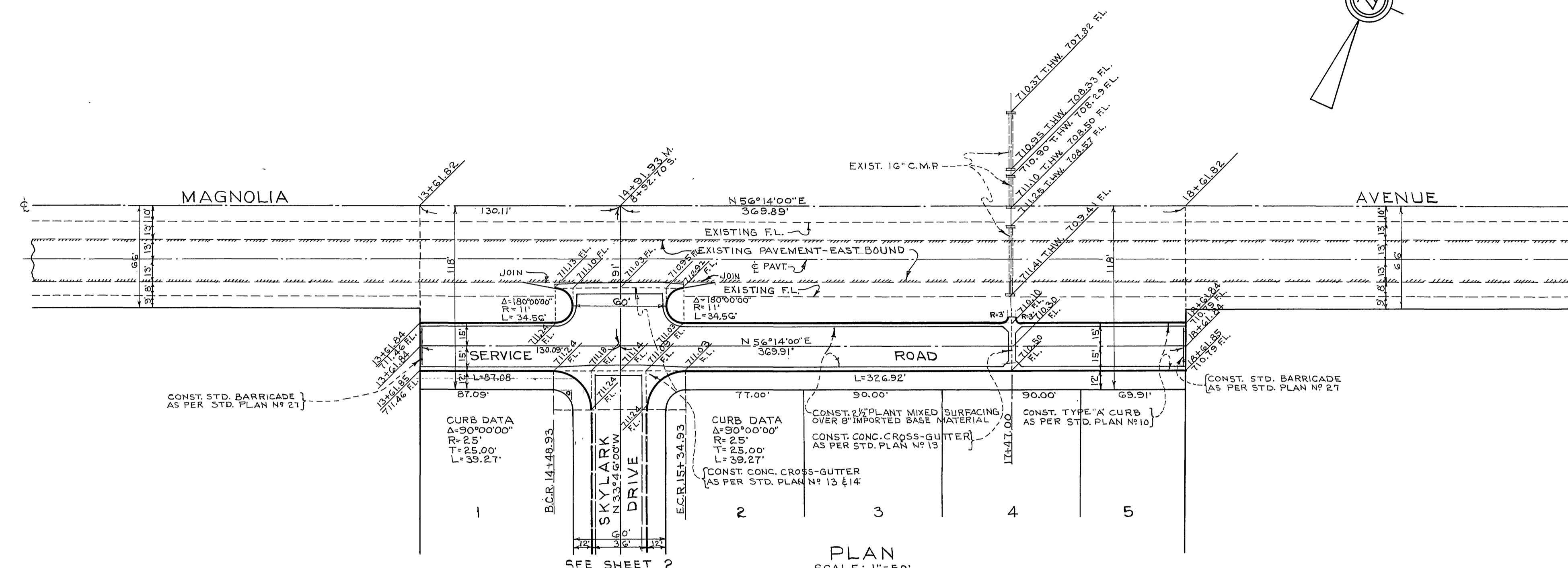
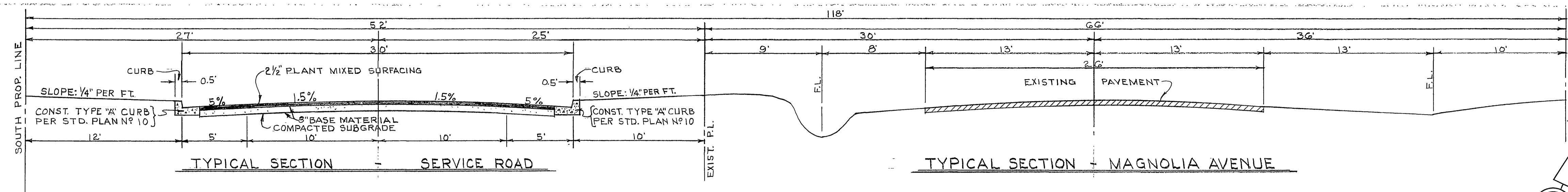
APPROVED: *R.D. Powell* DATE 7-18-1956
FOR ROAD COMMISSIONER
RIVERSIDE COUNTY

BENCH MARK
U.S.G.S. Disc. top of headwall north side of Santa Fe
railroad tracks and west of Fillmore St., K-38, 1924
Elev. 122.164

GENERAL NOTES
All work to be done in conformance with the County of
Riverside's "Specifications for the Improvement of New
Subdivision Streets" dated 1953 and on file in the office
of the County Surveyor.

Utility relocations necessary to clear the work shall
be done by the subdivider.

Install Street Name Signs. (County Std. N° 2.8) as
directed.

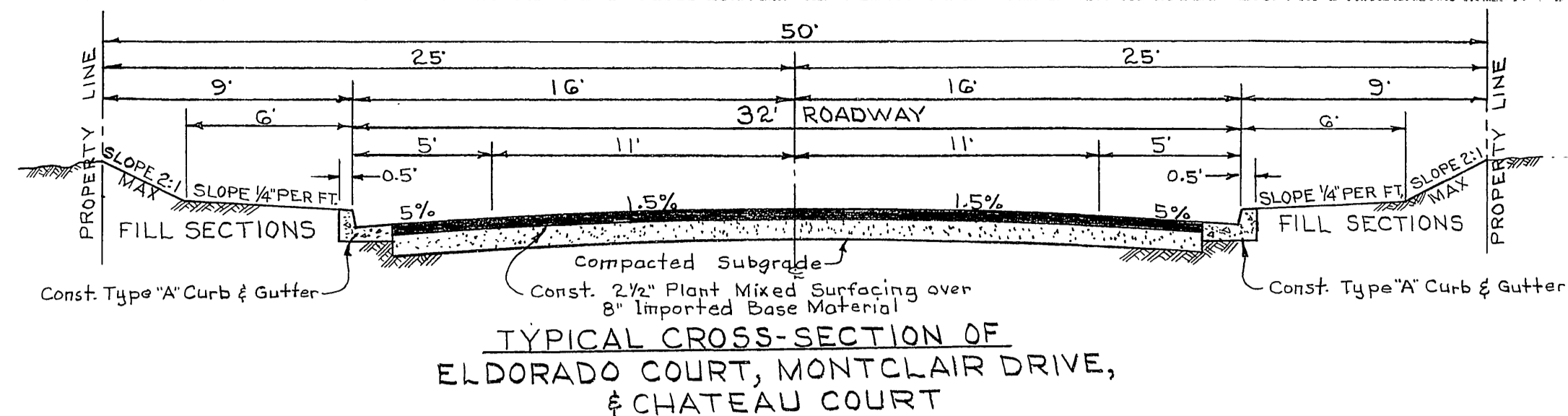


PROPERTY OF
COUNTY OF RIVERSIDE
Office of the Road Commissioner

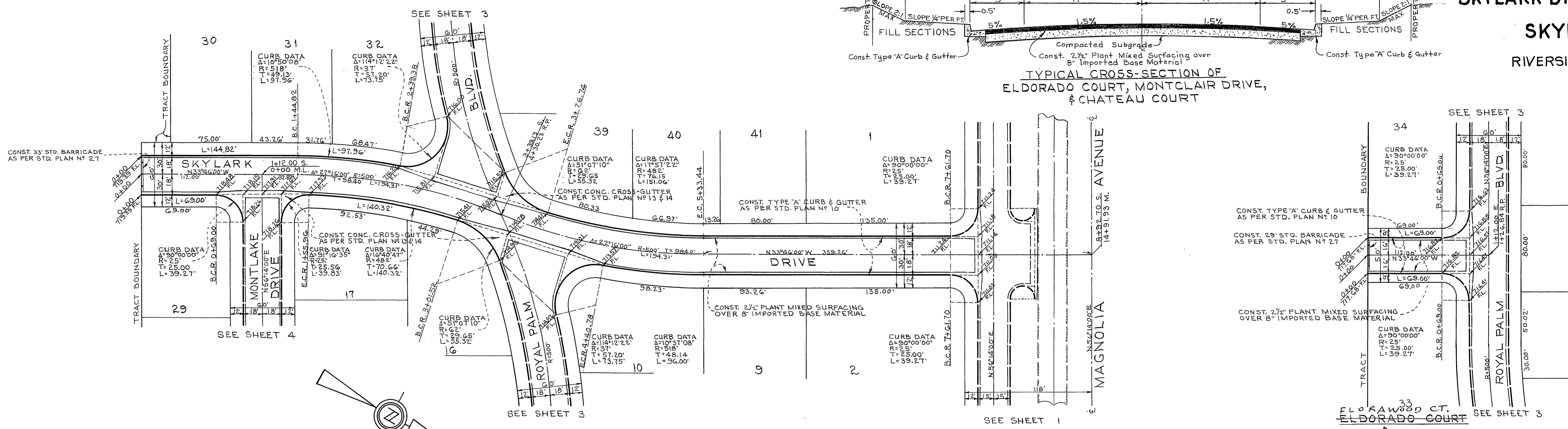
PROFILE
SCALE: HORIZ. 1"=50'
VERT. 1"=5'

INDEXED

PLAN AND PROFILE
FOR STREET IMPROVEMENTS
OF
SKYLARK DR. & ELDORADO COURT
IN
SKYLARK TERRACE
IN
RIVERSIDE COUNTY CALIFORNIA

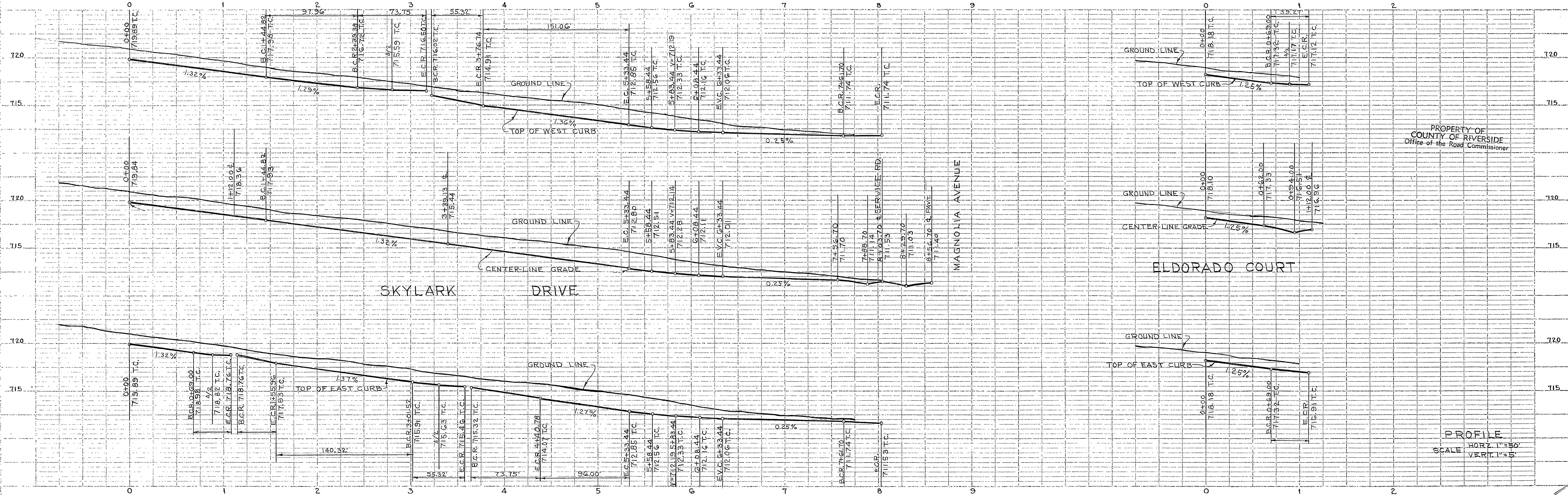


TYPICAL CROSS-SECTION OF
ELDORADO COURT, MONTCLAIR DRIVE,
& CHATEAU COURT



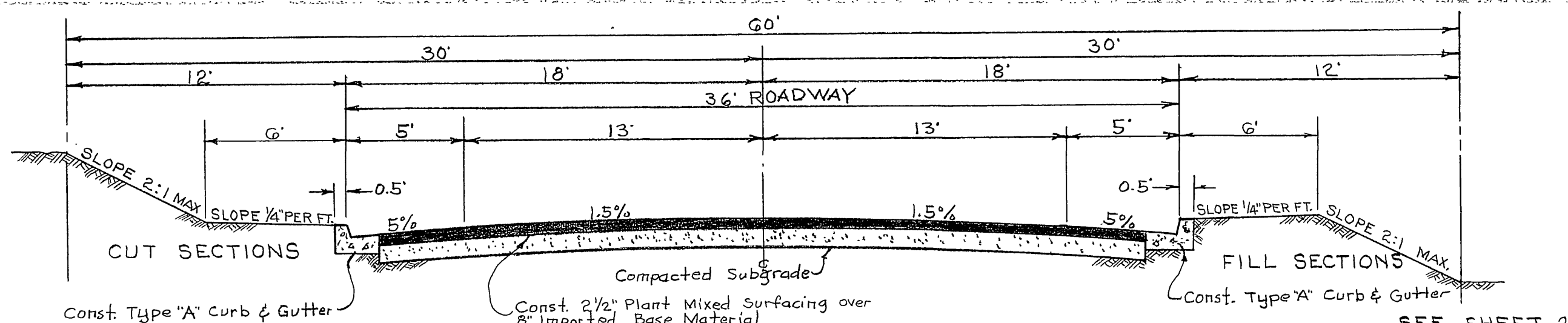
PLAN
SCALE: 1"=50'

BENCH MARK
U.S.G.S. Disc. top of headwall north side
of Santa Fe railroad tracks and west of
Fillmore St. K08,1924. Elev. 722.164



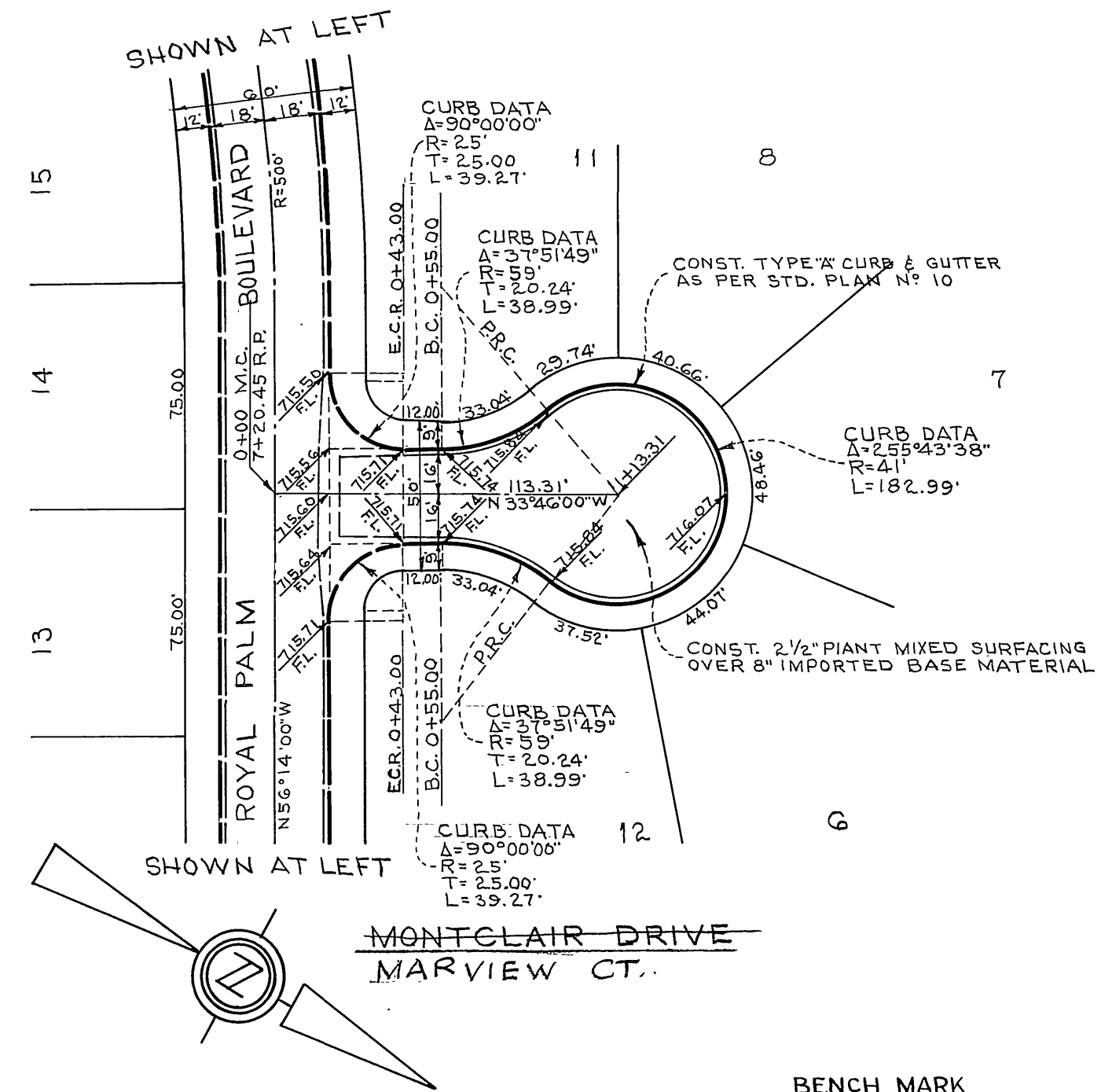
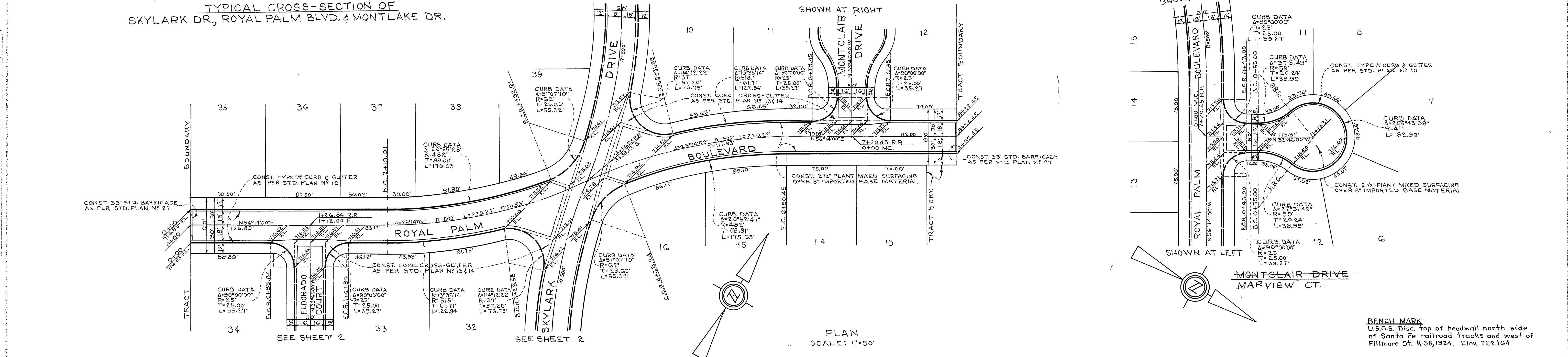
PROFILE
SCALE HORIZ. 1"=50'
VERT. 1"=5'

PLAN AND PROFILE
FOR STREET IMPROVEMENTS
OF
ROYAL PALM BLVD. & MONTCLAIR DR.
IN
SKYLARK TERRACE
IN
RIVERSIDE COUNTY CALIFORNIA



TYPICAL CROSS-SECTION OF
SKYLARK DR, ROYAL PALM BLVD. & MONTLAKE DR.

PLAN	DATE	BY	CHECKED
1	11/15/50	R. A. ANDERSON	R. A. ANDERSON
2	11/15/50	R. A. ANDERSON	R. A. ANDERSON
3	11/15/50	R. A. ANDERSON	R. A. ANDERSON
4	11/15/50	R. A. ANDERSON	R. A. ANDERSON
5	11/15/50	R. A. ANDERSON	R. A. ANDERSON
6	11/15/50	R. A. ANDERSON	R. A. ANDERSON
7	11/15/50	R. A. ANDERSON	R. A. ANDERSON
8	11/15/50	R. A. ANDERSON	R. A. ANDERSON
9	11/15/50	R. A. ANDERSON	R. A. ANDERSON
10	11/15/50	R. A. ANDERSON	R. A. ANDERSON
11	11/15/50	R. A. ANDERSON	R. A. ANDERSON
12	11/15/50	R. A. ANDERSON	R. A. ANDERSON
13	11/15/50	R. A. ANDERSON	R. A. ANDERSON
14	11/15/50	R. A. ANDERSON	R. A. ANDERSON
15	11/15/50	R. A. ANDERSON	R. A. ANDERSON
16	11/15/50	R. A. ANDERSON	R. A. ANDERSON
17	11/15/50	R. A. ANDERSON	R. A. ANDERSON
18	11/15/50	R. A. ANDERSON	R. A. ANDERSON
19	11/15/50	R. A. ANDERSON	R. A. ANDERSON
20	11/15/50	R. A. ANDERSON	R. A. ANDERSON
21	11/15/50	R. A. ANDERSON	R. A. ANDERSON
22	11/15/50	R. A. ANDERSON	R. A. ANDERSON
23	11/15/50	R. A. ANDERSON	R. A. ANDERSON
24	11/15/50	R. A. ANDERSON	R. A. ANDERSON
25	11/15/50	R. A. ANDERSON	R. A. ANDERSON
26	11/15/50	R. A. ANDERSON	R. A. ANDERSON
27	11/15/50	R. A. ANDERSON	R. A. ANDERSON
28	11/15/50	R. A. ANDERSON	R. A. ANDERSON
29	11/15/50	R. A. ANDERSON	R. A. ANDERSON
30	11/15/50	R. A. ANDERSON	R. A. ANDERSON
31	11/15/50	R. A. ANDERSON	R. A. ANDERSON
32	11/15/50	R. A. ANDERSON	R. A. ANDERSON
33	11/15/50	R. A. ANDERSON	R. A. ANDERSON
34	11/15/50	R. A. ANDERSON	R. A. ANDERSON
35	11/15/50	R. A. ANDERSON	R. A. ANDERSON
36	11/15/50	R. A. ANDERSON	R. A. ANDERSON
37	11/15/50	R. A. ANDERSON	R. A. ANDERSON
38	11/15/50	R. A. ANDERSON	R. A. ANDERSON
39	11/15/50	R. A. ANDERSON	R. A. ANDERSON
40	11/15/50	R. A. ANDERSON	R. A. ANDERSON
41	11/15/50	R. A. ANDERSON	R. A. ANDERSON
42	11/15/50	R. A. ANDERSON	R. A. ANDERSON
43	11/15/50	R. A. ANDERSON	R. A. ANDERSON
44	11/15/50	R. A. ANDERSON	R. A. ANDERSON
45	11/15/50	R. A. ANDERSON	R. A. ANDERSON
46	11/15/50	R. A. ANDERSON	R. A. ANDERSON
47	11/15/50	R. A. ANDERSON	R. A. ANDERSON
48	11/15/50	R. A. ANDERSON	R. A. ANDERSON
49	11/15/50	R. A. ANDERSON	R. A. ANDERSON
50	11/15/50	R. A. ANDERSON	R. A. ANDERSON
51	11/15/50	R. A. ANDERSON	R. A. ANDERSON
52	11/15/50	R. A. ANDERSON	R. A. ANDERSON
53	11/15/50	R. A. ANDERSON	R. A. ANDERSON
54	11/15/50	R. A. ANDERSON	R. A. ANDERSON
55	11/15/50	R. A. ANDERSON	R. A. ANDERSON
56	11/15/50	R. A. ANDERSON	R. A. ANDERSON
57	11/15/50	R. A. ANDERSON	R. A. ANDERSON
58	11/15/50	R. A. ANDERSON	R. A. ANDERSON
59	11/15/50	R. A. ANDERSON	R. A. ANDERSON
60	11/15/50	R. A. ANDERSON	R. A. ANDERSON
61	11/15/50	R. A. ANDERSON	R. A. ANDERSON
62	11/15/50	R. A. ANDERSON	R. A. ANDERSON
63	11/15/50	R. A. ANDERSON	R. A. ANDERSON
64	11/15/50	R. A. ANDERSON	R. A. ANDERSON
65	11/15/50	R. A. ANDERSON	R. A. ANDERSON
66	11/15/50	R. A. ANDERSON	R. A. ANDERSON
67	11/15/50	R. A. ANDERSON	R. A. ANDERSON
68	11/15/50	R. A. ANDERSON	R. A. ANDERSON
69	11/15/50	R. A. ANDERSON	R. A. ANDERSON
70	11/15/50	R. A. ANDERSON	R. A. ANDERSON
71	11/15/50	R. A. ANDERSON	R. A. ANDERSON
72	11/15/50	R. A. ANDERSON	R. A. ANDERSON
73	11/15/50	R. A. ANDERSON	R. A. ANDERSON
74	11/15/50	R. A. ANDERSON	R. A. ANDERSON
75	11/15/50	R. A. ANDERSON	R. A. ANDERSON
76	11/15/50	R. A. ANDERSON	R. A. ANDERSON
77	11/15/50	R. A. ANDERSON	R. A. ANDERSON
78	11/15/50	R. A. ANDERSON	R. A. ANDERSON
79	11/15/50	R. A. ANDERSON	R. A. ANDERSON
80	11/15/50	R. A. ANDERSON	R. A. ANDERSON
81	11/15/50	R. A. ANDERSON	R. A. ANDERSON
82	11/15/50	R. A. ANDERSON	R. A. ANDERSON
83	11/15/50	R. A. ANDERSON	R. A. ANDERSON
84	11/15/50	R. A. ANDERSON	R. A. ANDERSON
85	11/15/50	R. A. ANDERSON	R. A. ANDERSON
86	11/15/50	R. A. ANDERSON	R. A. ANDERSON
87	11/15/50	R. A. ANDERSON	R. A. ANDERSON
88	11/15/50	R. A. ANDERSON	R. A. ANDERSON
89	11/15/50	R. A. ANDERSON	R. A. ANDERSON
90	11/15/50	R. A. ANDERSON	R. A. ANDERSON
91	11/15/50	R. A. ANDERSON	R. A. ANDERSON
92	11/15/50	R. A. ANDERSON	R. A. ANDERSON
93	11/15/50	R. A. ANDERSON	R. A. ANDERSON
94	11/15/50	R. A. ANDERSON	R. A. ANDERSON
95	11/15/50	R. A. ANDERSON	R. A. ANDERSON
96	11/15/50	R. A. ANDERSON	R. A. ANDERSON
97	11/15/50	R. A. ANDERSON	R. A. ANDERSON
98	11/15/50	R. A. ANDERSON	R. A. ANDERSON
99	11/15/50	R. A. ANDERSON	R. A. ANDERSON
100	11/15/50	R. A. ANDERSON	R. A. ANDERSON



BENCH MARK
U.S.G.S. Disc. Top of headwall north side
of Santa Fe railroad tracks and west of
Fillmore St. K-38, 1924. Elev. 722.164

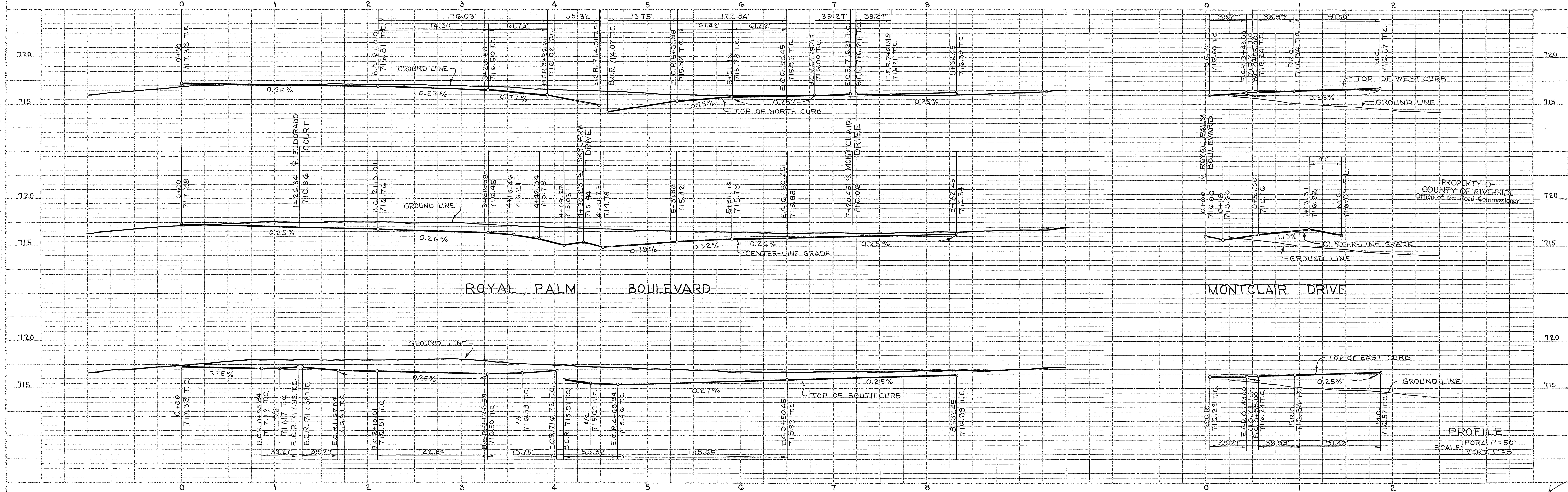
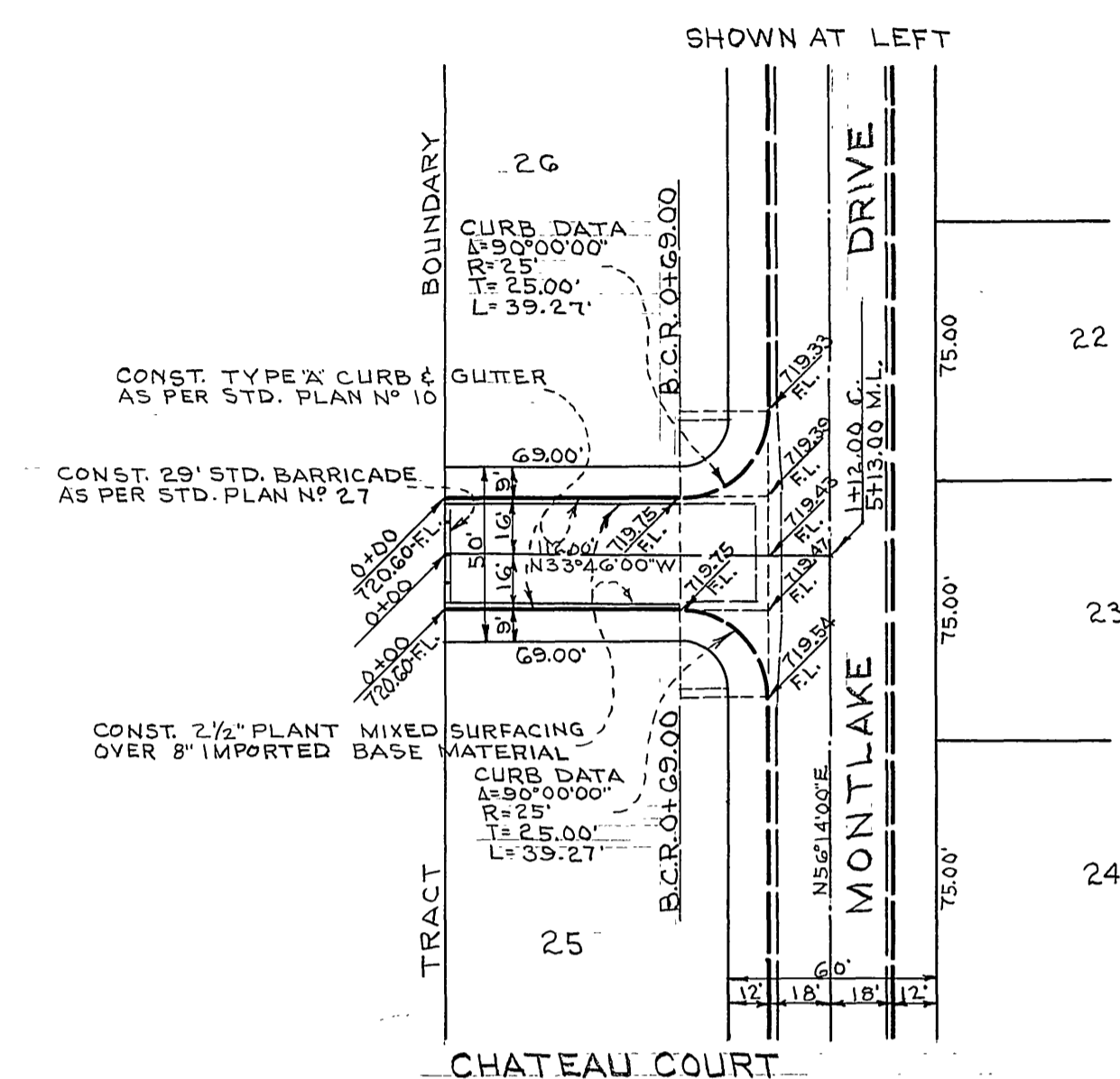
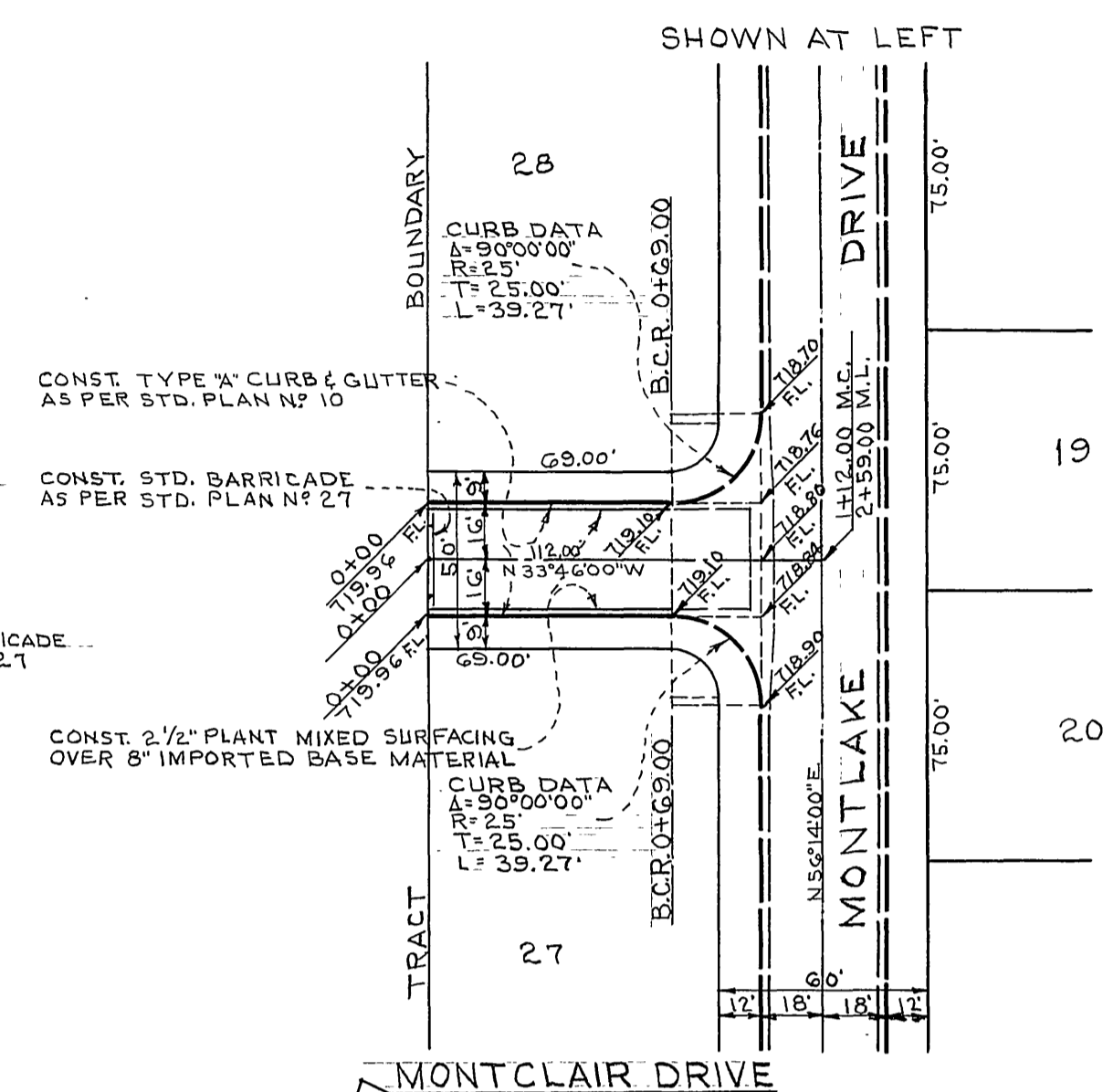
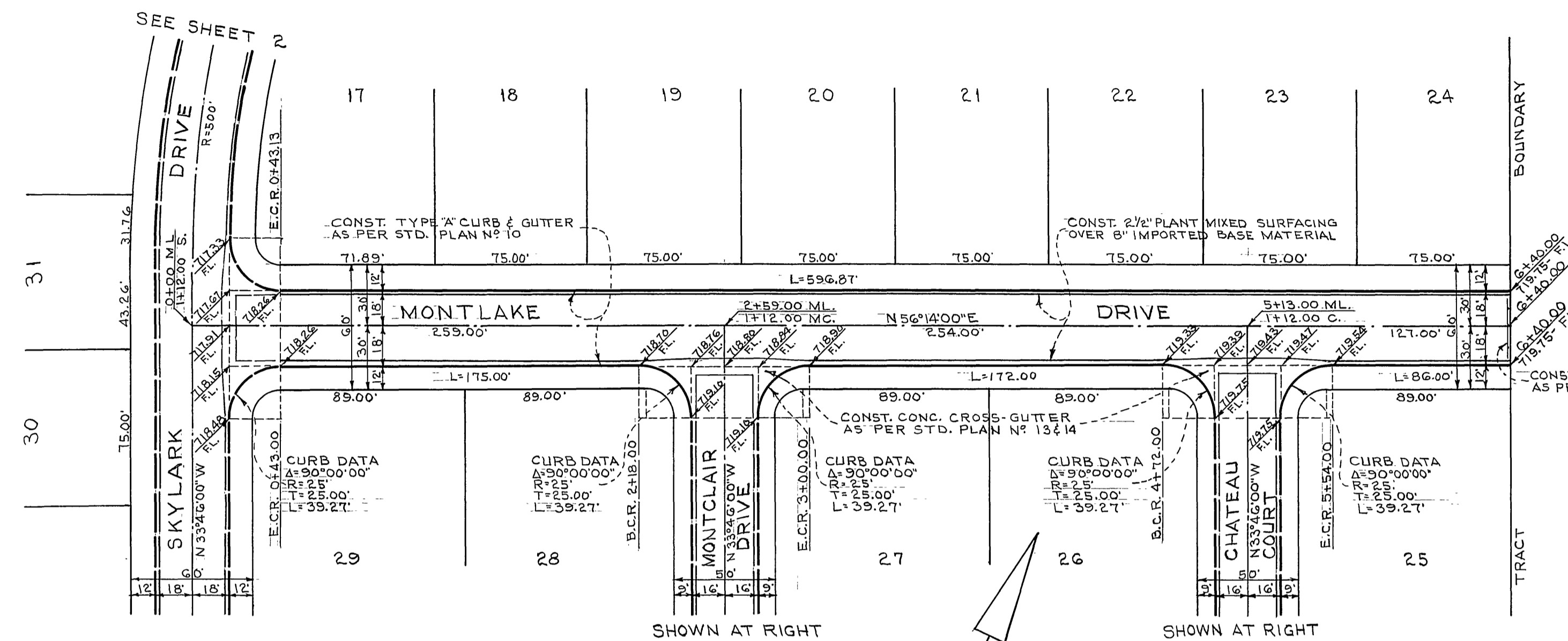


PLATE 1-PLAN, PROFILE, & A-3
CLEARANCE PAPER 20 x 34 1/2"
50 1000002

PLAN AND PROFILE
FOR STREET IMPROVEMENTS
OF
MONTLAKE DR., MONTCLAIR DR. & CHATEAU CT.
IN
SKYLARK TERRACE
IN
RIVERSIDE COUNTY CALIFORNIA

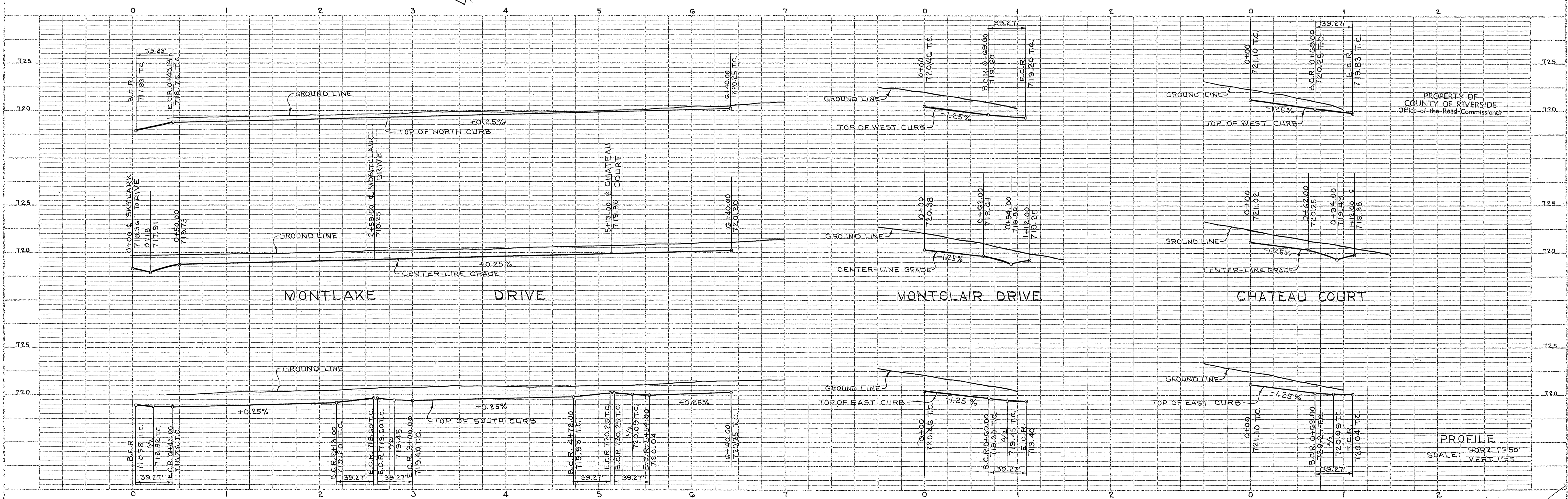
DATE	BY
APPROVED	DESIGNED
CHECKED	DRAWN
IN CHARGE	PROJECT ENGINEER



PLAN
SCALE: 1"=50'

BENCH MARK
U.S.G.S. Disc. top of headwall North side
of Santa Fe Railroad tracks and West of
Fillmore St. K-38, 1924. Elev. 727.164

DATE	BY
APPROVED	DESIGNED
CHECKED	DRAWN
IN CHARGE	PROJECT ENGINEER



PROFILE
SCALE: HORIZ. 1"=50'
VERT. 1"=5'

PLATE 1 PLAN-PROFILE-P 4 S
CLEARPRINT PAPER 30" x 54" CAL
43 3062H2