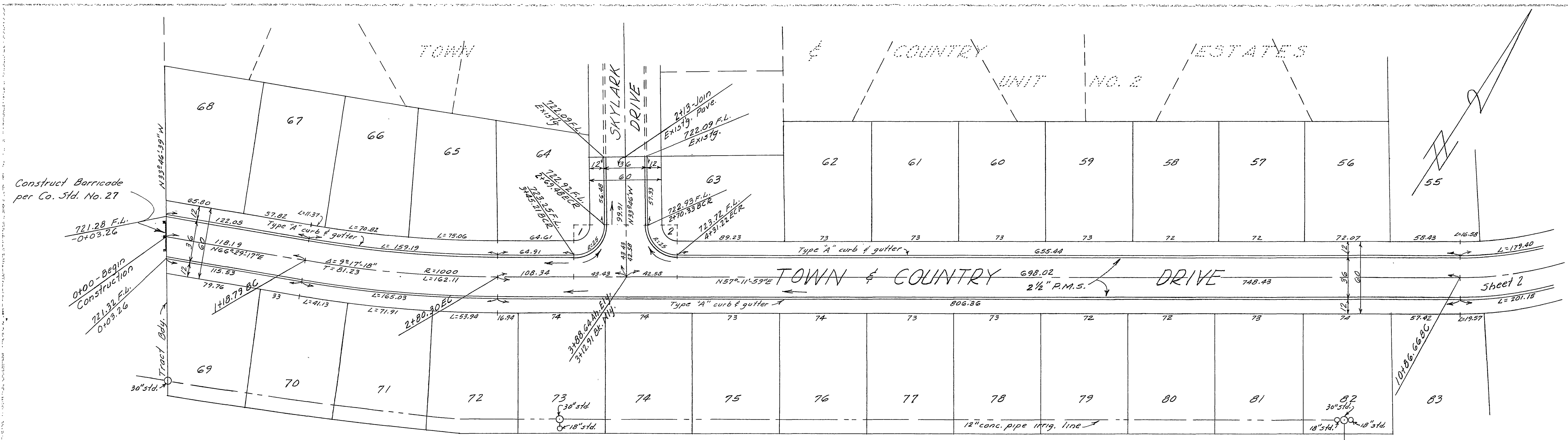


DATE	
BY	
CHECKED	
APPROVED	
DESIGNED	
DRAWN	
TRACED	
CHECKED	
SCALE	
NO.	



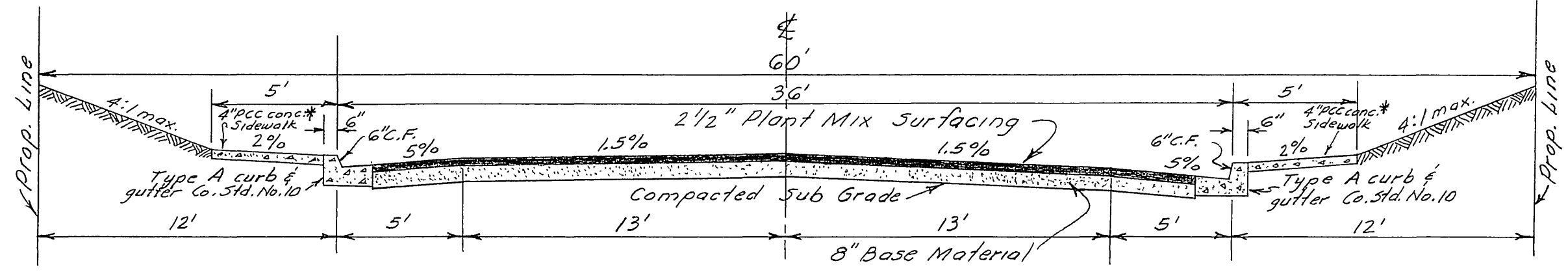
NOTES:
 BENCH MARK - U.S.G.S. Disc on top of headwall north side of Santa Fe R.R. tracks and West of Fillmore St. K-38, 1924. Elev. 722.164. FB391/5
 ALL WORK shall conform to the requirements of the Riverside County Road Dept. "Specifications for the Improvement of Subdivision Streets" dated 1956 and on file in the office of the County Road Commissioner.
 SUBDIVIDER will install street name signs conforming to County Std. No. 29 as directed.
 ANY RELOCATION of existing utilities to clear the proposed work shall be the responsibility of the subdivider.

ESTIMATE OF QUANTITIES

Type A curb & gutter	5,223 lin. ft.
2 1/2" Plant Mix Surfacing	91,494 sq. ft.
Barricade Co. Std. No. 27	1
Excavation	6,335 cu. yds.
Imported Base Material	2,269 cu. yds.
* Concrete sidewalk	23,300 sq. ft.
Cross Gutters (2)	1,056 sq. ft.

* Sidewalks are not to be constructed unless requested by financing agent.

2 Street Grades Lowered, Quantities Revised	4-22-59 REC
1 Street Grades Raised, Quantities Revised	1-12-59 REC
REVISIONS	DATE BY



TYPICAL CROSS SECTION
 TOWN & COUNTRY, MONTLAKE & SKYLARK

CURB RETURN DATA

No.	R	A	T	L
1	25'	90°57'59"	25.43	39.69
2	25'	89°02'01"	24.58	38.85

2nd Revision Approved April 24, 1959
 By *Rauld Stout* Deputy

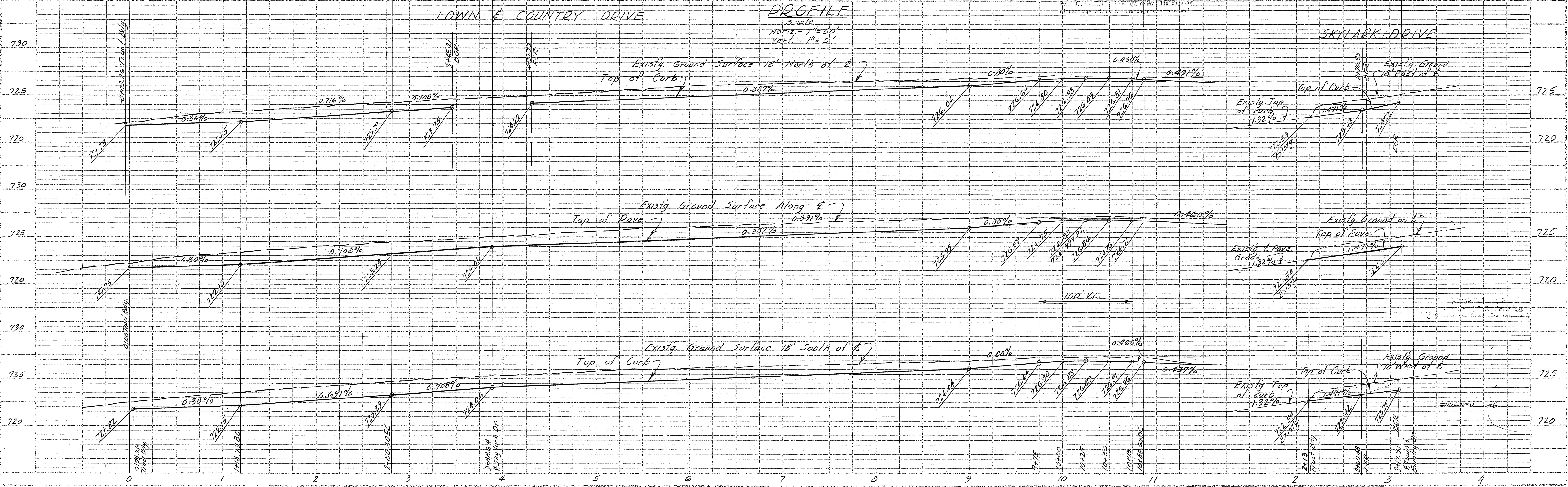
Revision Approved 1-28-1959
 By *Rauld Stout* Deputy

Approved August 5, 1958
 A. C. KEITH
 Riverside County Road Commissioner
 By *Rauld Stout* Deputy

"Approval of this plan by the Riverside County Board of Supervisors is hereby given for the purpose of the 'Engineering design'."

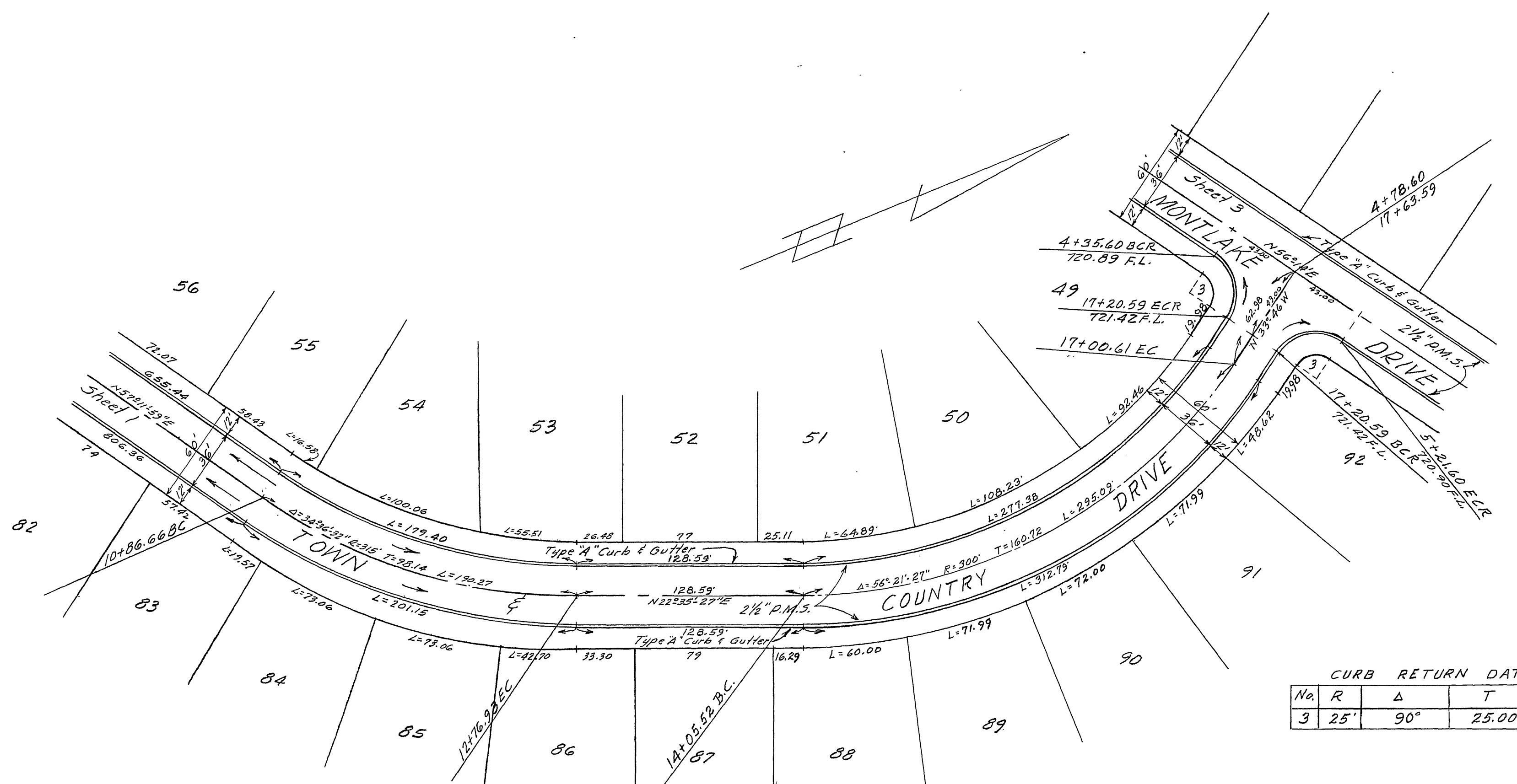
TOWN & COUNTRY ESTATES NO. 3
 STREET PLAN & PROFILE
 SKYLARK DRIVE
 TOWN & COUNTRY DRIVE

SCALE 1/4"=50'	ALBERT A. WEBB ASSOCIATES CIVIL ENGINEERS	N.O. 58-125 SHEET 1
DATE 7-24-58	ALBERT A. WEBB ASSOCIATES CIVIL ENGINEERS	OF 3 SHEETS
DRAWN REC	RIVERSIDE CALIFORNIA	DWG. NO. 58-125A
TRACED REC		
CHECKED REC		
F. B. 391		



PROFILE
 Scale
 Horiz. - 1"=50'
 Vert. - 1"=5'

DATE	
BY	
PROJECT	
NO.	
DATE	
BY	
PROJECT	
NO.	



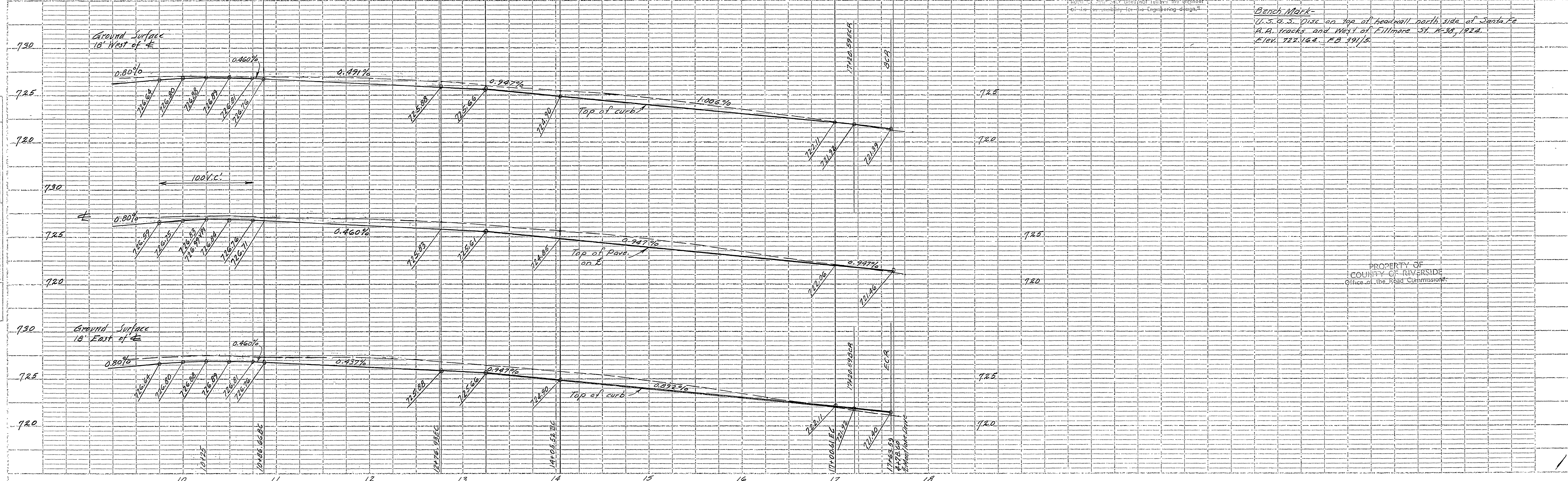
CURB RETURN DATA

No	R	Δ	T	L
3	25'	90°	25.00	39.27

Approved 1-28 1959
 A. C. KEITH
 Riverside County Road Commissioner
 By Paul H. Stout Deputy

REVISIONS	DATE	BY
TOWN & COUNTRY ESTATES NO. 3		
STREET PLAN & PROFILE		
TOWN & COUNTRY DRIVE		
SCALE 1"=50'	DATE 11-24-58	W.O. 58-125
DRAWN REC	CHECKED REC	SHEET 2
ALBERT A. WEBB ASSOCIATES CIVIL ENGINEERS		OF 3 SHEETS
RIVERSIDE CALIFORNIA		DWG. NO. 58-125A
F. B. 391		

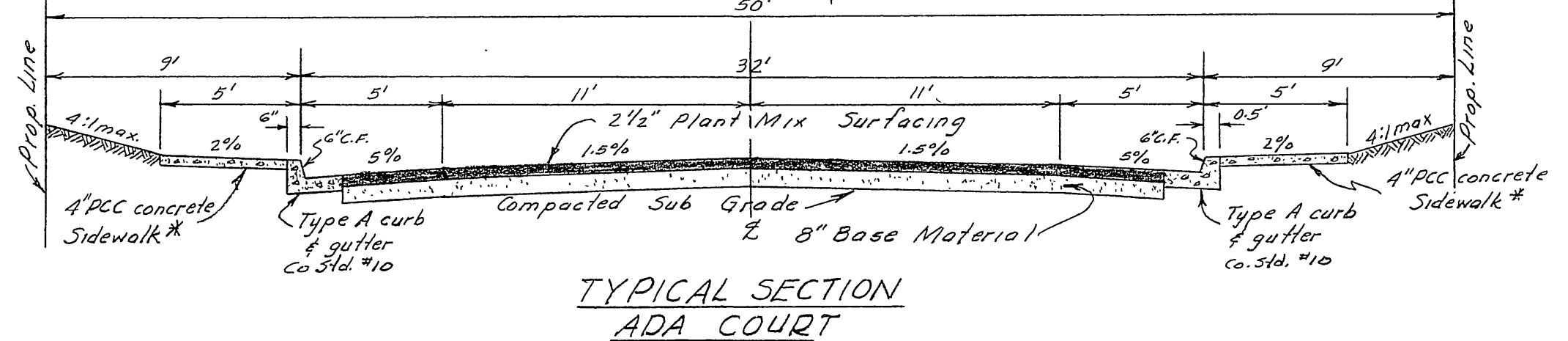
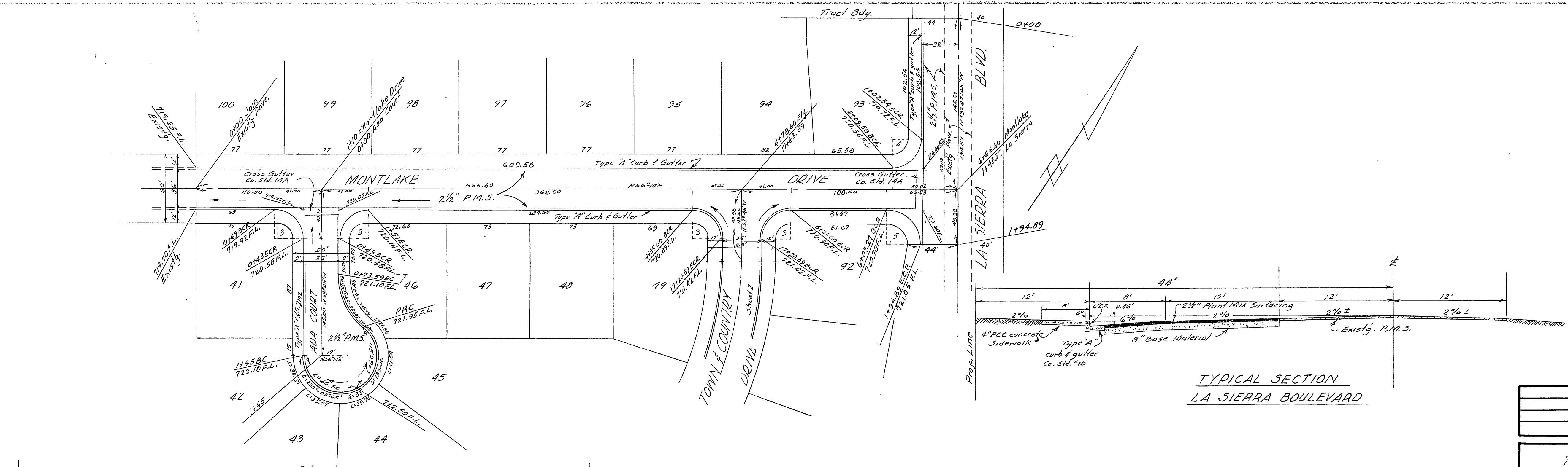
DATE	
BY	
PROJECT	
NO.	
DATE	
BY	
PROJECT	
NO.	



Bench Mark -
 U.S. G.S. Disk on top of headwall north side of Santa Fe
 R.R. tracks and West of Fillmore St. K-38, 1924.
 Elev. 722.164. F.B. 391/5.

PROPERTY OF
 COUNTY OF RIVERSIDE
 Office of the Road Commissioner

DATE	BY	REVISION



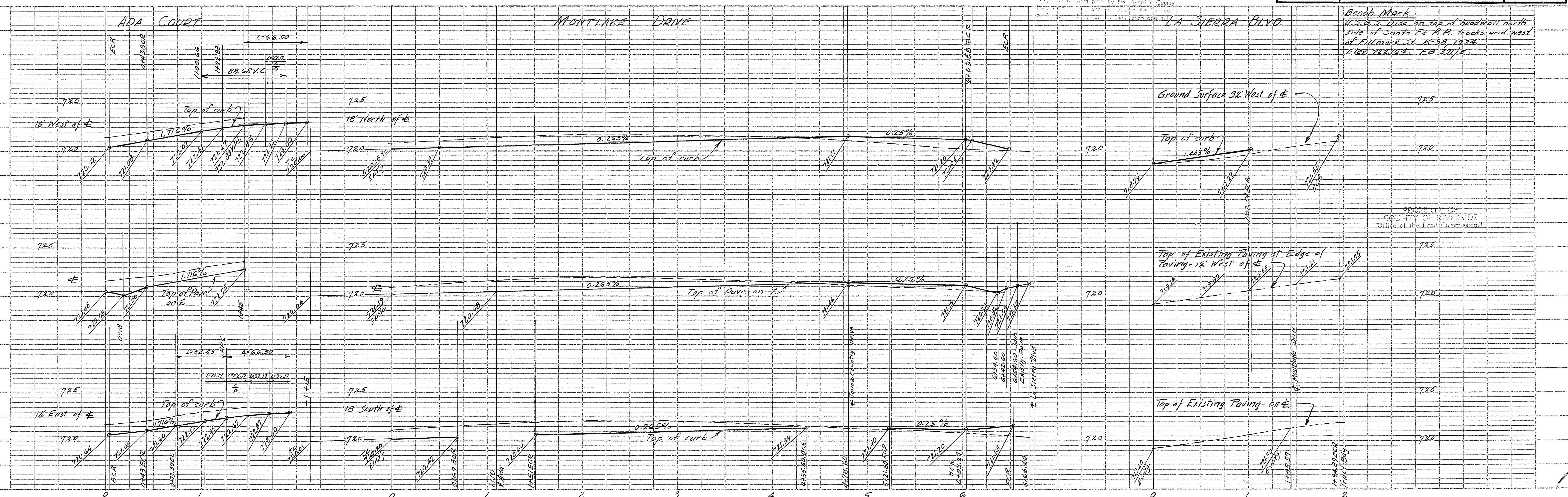
CURB RETURN DATA

No.	R	Δ	T	L
3	25	90°	25.00	39.27
4	25	90° 01' 45"	25.01	39.28
5	31.36	89° 58' 15"	31.34	49.24

Approved 1-28 1959.
 A. C. KEITH
 Riverside County Road Commissioner
 By Paul H. Stout Deputy

REVISIONS		DATE	BY
TOWN & COUNTRY ESTATES NO. 3			
STREET PLAN & PROFILE			
MONTLAKE DRIVE			
ADA COURT & LA SIERRA BLVD.			
SCALE 1"=50'	DATE 12-6-58	W.O. 58-125	
DRAWN EEC	CHECKED	SHEET 3	
ALBERT A. WEBB ASSOCIATES CIVIL ENGINEERS		OF 3 SHEETS	
RIVERSIDE CALIFORNIA		DWG. NO. 58-125A	

DATE	BY	REVISION



Bench Mark
 U.S.G.S. 2132 on top of headwall north side of Santa Fe R.R. tracks and west of Fillmore St. K-38, 1924. ELEV. 722.62. FB 391/5.

PROPERTY OF
 COUNTY OF RIVERSIDE
 OFFICE OF THE COUNTY ENGINEER