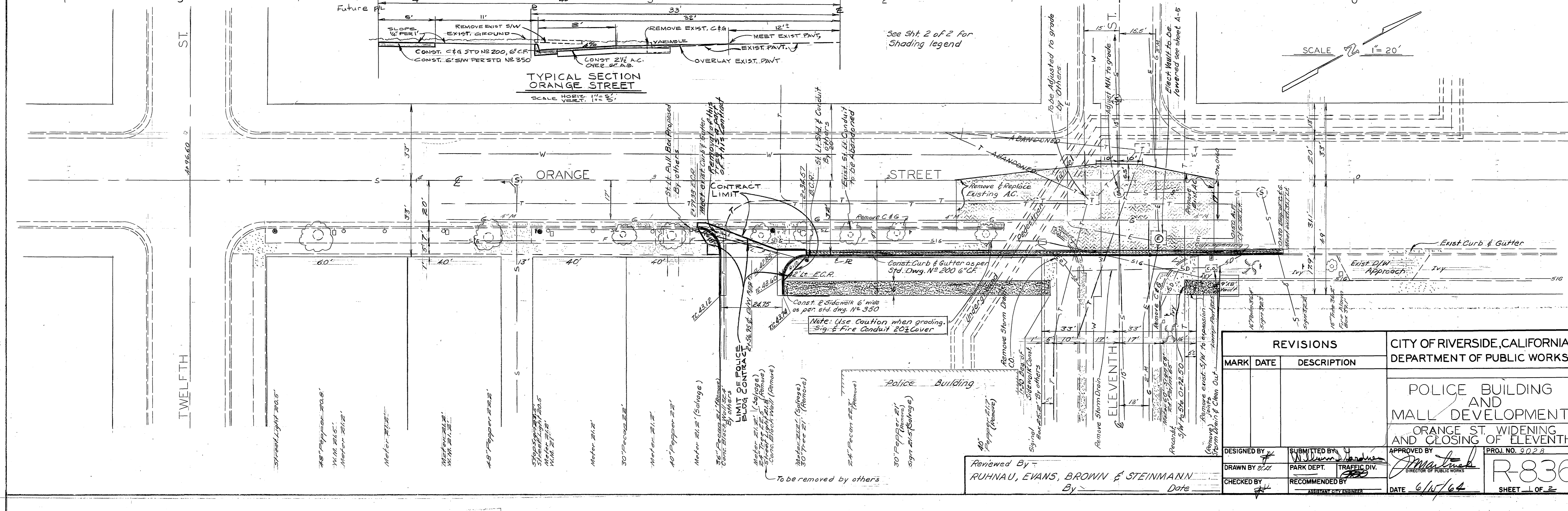


BM 846.92 PK IN PL.
 CURB SW COR. 11TH ST.
 & ORANGE ST.
 FB P-3 60-62 T-5 53
 SCALE HORIZ. 1" = 20'
 VERT. 1" = 2'

PROFILE	
NO.	DATE



REVISIONS			CITY OF RIVERSIDE, CALIFORNIA DEPARTMENT OF PUBLIC WORKS	
MARK	DATE	DESCRIPTION		

DESIGNED BY	SUBMITTED BY	APPROVED BY	PROJ. NO. 9028
DRAWN BY	PARK DEPT.	TRAFFIC DIV.	R-836
CHECKED BY	RECOMMENDED BY	DATE 6/15/64	SHEET 1 OF 2

PLAN	
NO.	DATE

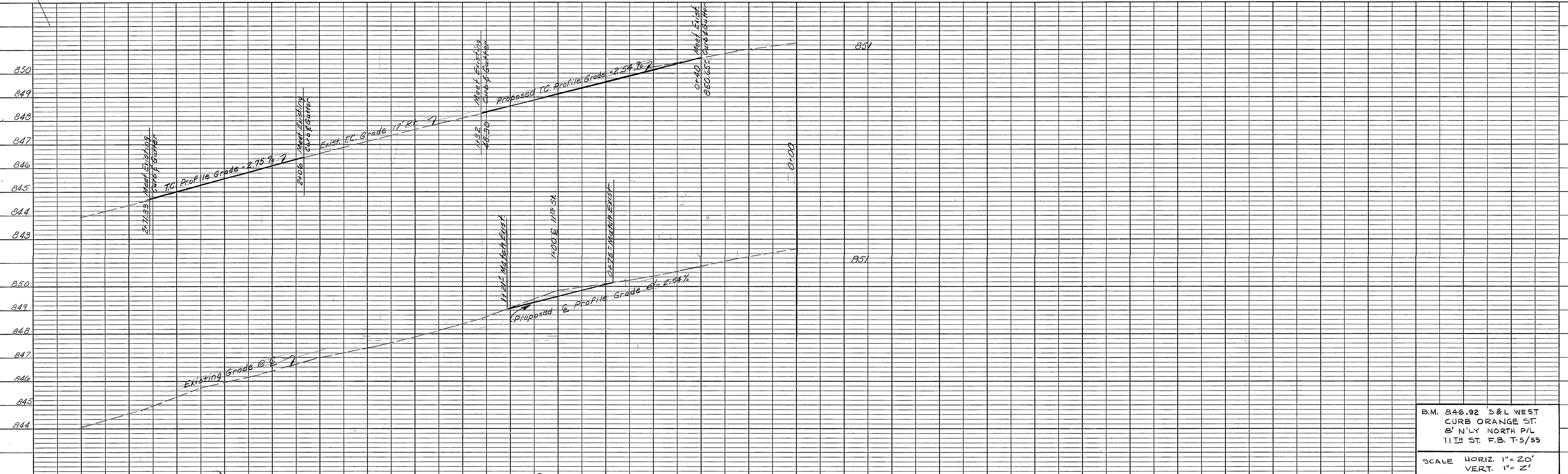
REVISIONS	DRAWN BY

CHECKED BY	DATE JULY 15 64
COMMISSION NO. 5001.16	

CITY OF RIVERSIDE 11TH STREET MALL DEVELOPMENT
 RIVERSIDE CALIFORNIA

RUHNAU·EVANS·BROWN & STEINMANN
 architecture engineering planning
 MISSION INN ROTUNDA RIVERSIDE CALIFORNIA
 BRANDOW & JOHNSTON CONSULTING ENGINEERS

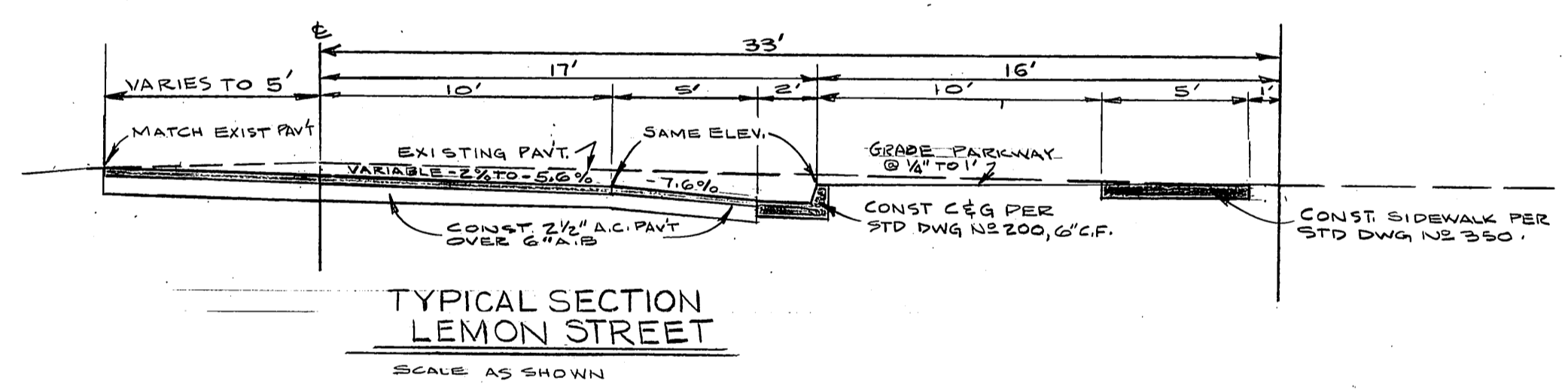
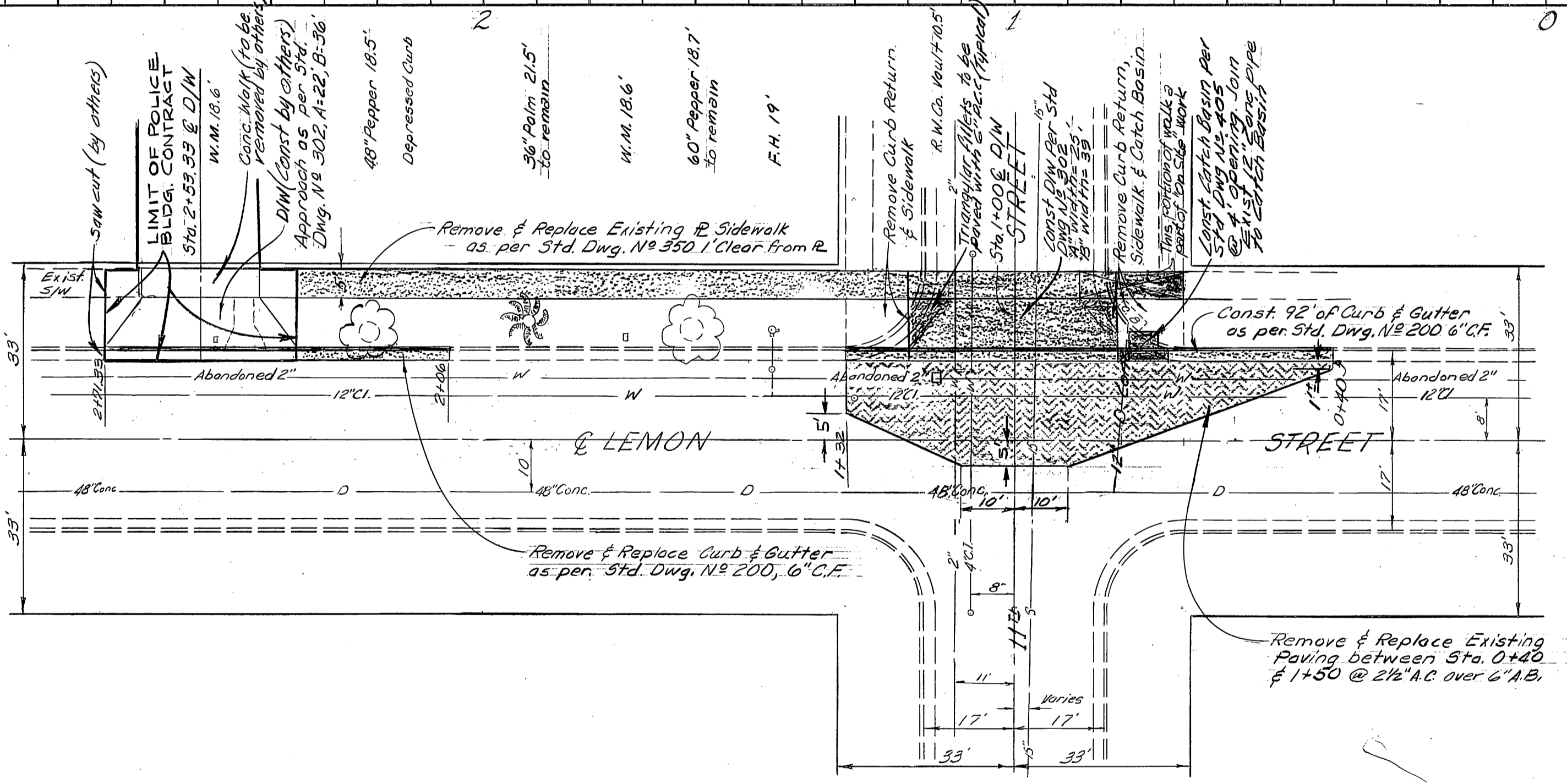
OFF SITE IMPROVEMENT
 ORANGE STREET



B.M. 846.92 S&L WEST CURB ORANGE ST. 8' N'LY NORTH P/L 11TH ST. F.B. T-5/55

SCALE HORIZ. 1" = 20'
VERT. 1" = 2'

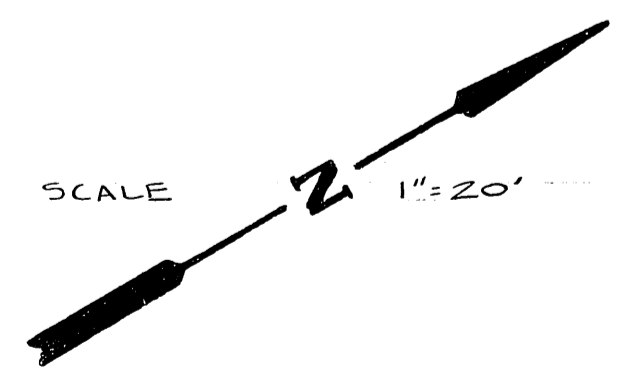
PROFILE	NO. _____	BY _____	DATE _____
PROJECT	NO. _____		
NOTED	BY _____		
NOTED	BY _____		
NOTED	BY _____		
NOTED	BY _____		



SHADING LEGEND

Indicates A.C. to be Placed

Indicates P.C.C. to be Placed



PLAN	NO. _____	BY _____	DATE _____
PROJECT	NO. _____		
NOTED	BY _____		
NOTED	BY _____		
NOTED	BY _____		
NOTED	BY _____		

REVISIONS			CITY OF RIVERSIDE, CALIFORNIA DEPARTMENT OF PUBLIC WORKS	
MARK	DATE	DESCRIPTION	POLICE BUILDING AND MALL DEVELOPMENT LEMON ST. CLOSING OF ELEVENTH	
DESIGNED BY	SUBMITTED BY	APPROVED BY	PROJ. NO. 9028	R-836 SHEET 2 OF 2
DRAWN BY	PARK DEPT.	TRAFFIC DIV.		
CHECKED BY	RECOMMENDED BY	ASSISTANT CITY ENGINEER	DATE 6/15/64	

Reviewed By - RUHNAU, EVANS, BROWN & STEINMANN
By _____ Date _____