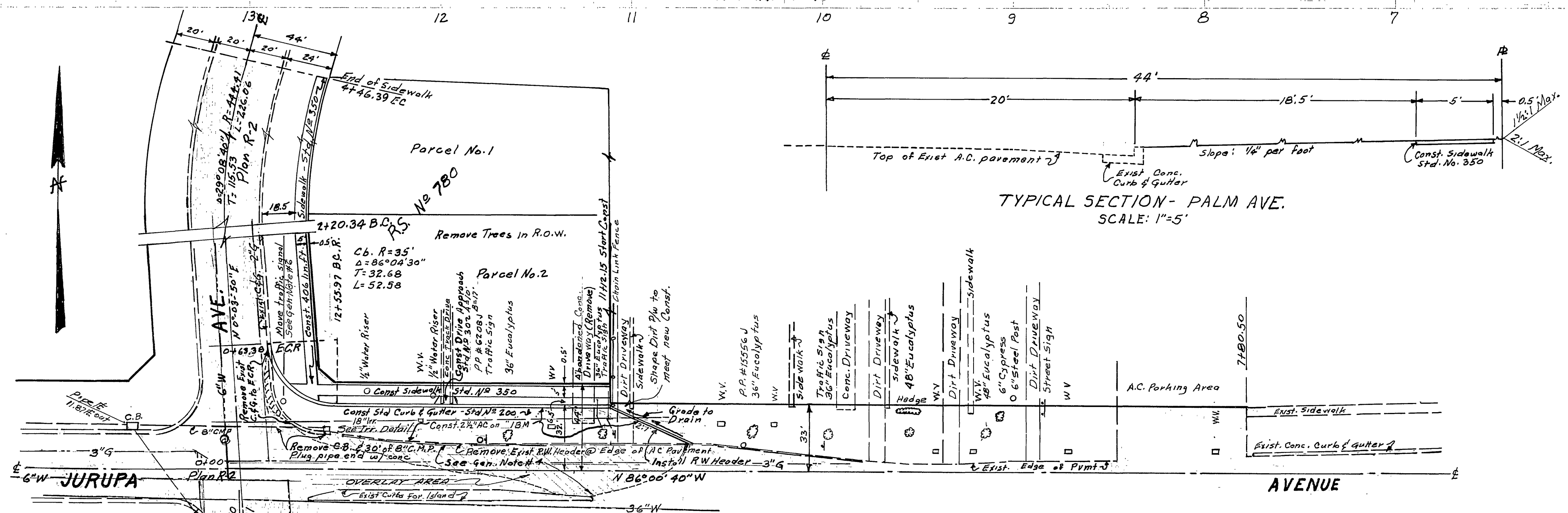


PROFILE  
VERT: 1" = 2'  
SCALE-HORZ: 1" = 40'



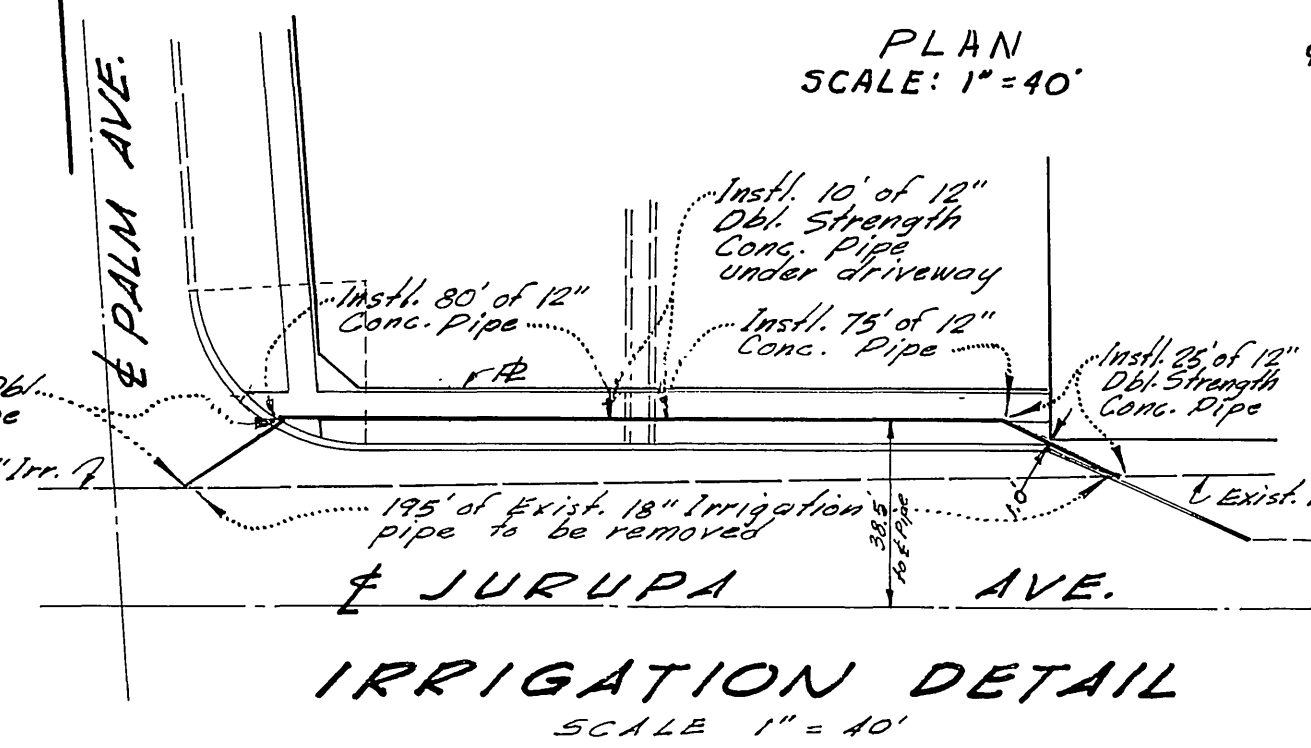
TYPICAL SECTION - PALM AVE.  
SCALE: 1" = 5'

GENERAL NOTES

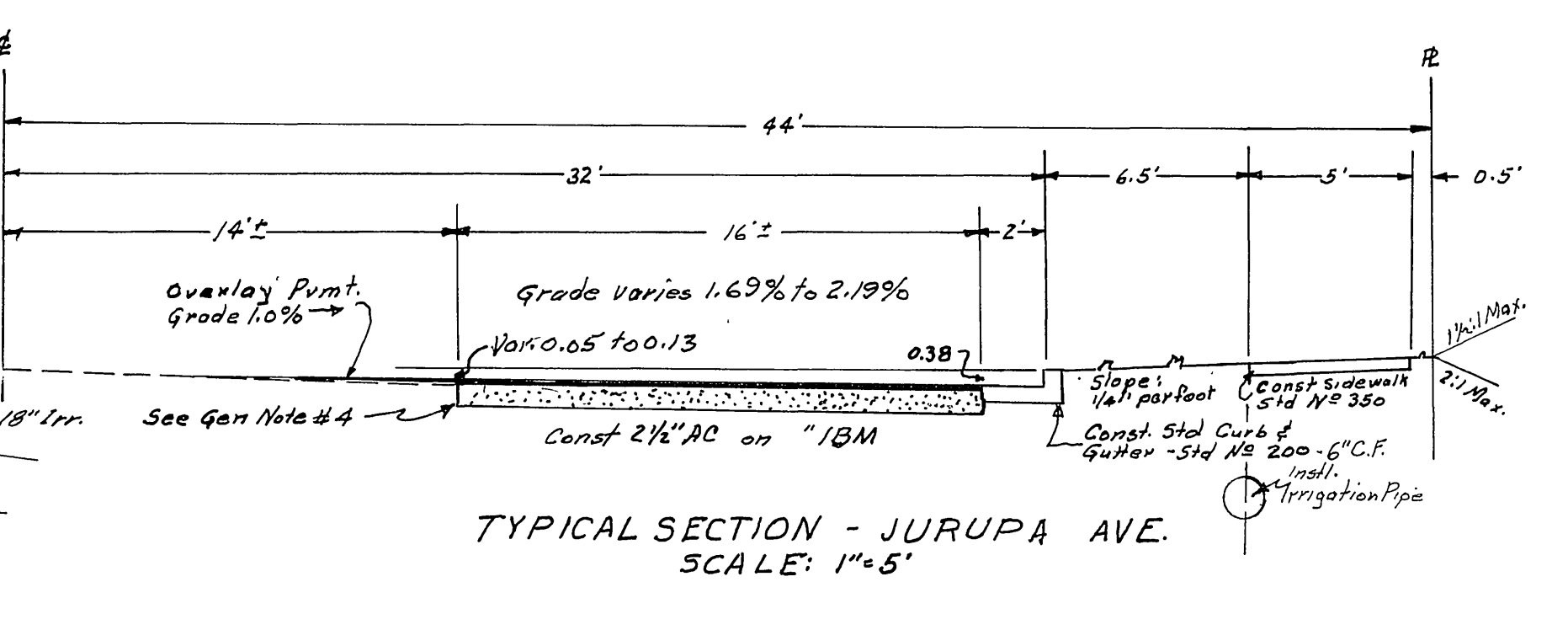
1. It shall be the responsibility of the Contractor to clear the right of way in accordance with the provisions of law as it affects each utility including irrigation lines and appurtenances and at no cost to the City of Riverside.
2. Construction shall be in accordance with the City of Riverside, Department of Public Works, Specification No 461 and Standard Drawings.
3. The Developer will take a soil test to determine the requirements on imported base material after the streets have been prepared to rough grade.
4. Trim edge of existing pavement, where new paving joins, to a clean straight line. Construct match-up paving or overlay paving as directed in the field to produce a smooth crown section.
5. Prime coat, seal coat and paint binder are required.
6. Traffic Signal to be relocated by City at Developer's expense. See Plan X-218 for underground signal conduit. Contractor to notify City Traffic Division - DV-1375, Ext. 246, at least 7 days prior to starting Curb & Gutter work.

NOTE: Relocation of irrigation facilities to be done by City Irrigation Division at developers expense.

Abandon & Remove 145' of 18" Irrigation pipe & install 12" Conc. Pipe & 12" Double Strength Conc. Pipe as shown at right.



IRRIGATION DETAIL  
SCALE: 1" = 40'



TYPICAL SECTION - JURUPA AVE.  
SCALE: 1" = 5'

Bench Marks Spike & lead on top of southerly curb of Jurupa Avenue, 15'± Easterly of the Easterly curb of Palm Avenue. Elevation: 814.54

INDENED  
**CRAWLEY & HAWKINS**  
SURVEYORS AND ENGINEERS  
Riverside, California  
George O. Crawley  
March 15, 1964

REVISIONS	
MARK	DESCRIPTION

CITY OF RIVERSIDE, CALIFORNIA  
DEPARTMENT OF PUBLIC WORKS  
**STREET PLAN & PROFILE**  
**JURUPA AVE & PALM AVE.**  
NE'ly Corner  
RECORD OF SURVEY No 780

DESIGNED BY 10m	APPROVED BY William P. Hardum	DATE 8-19-64
CHECKED BY 10m	DATE	

PROJ. NO. **R-839**  
SHEET 1 OF 1

Supervised by  
E-110