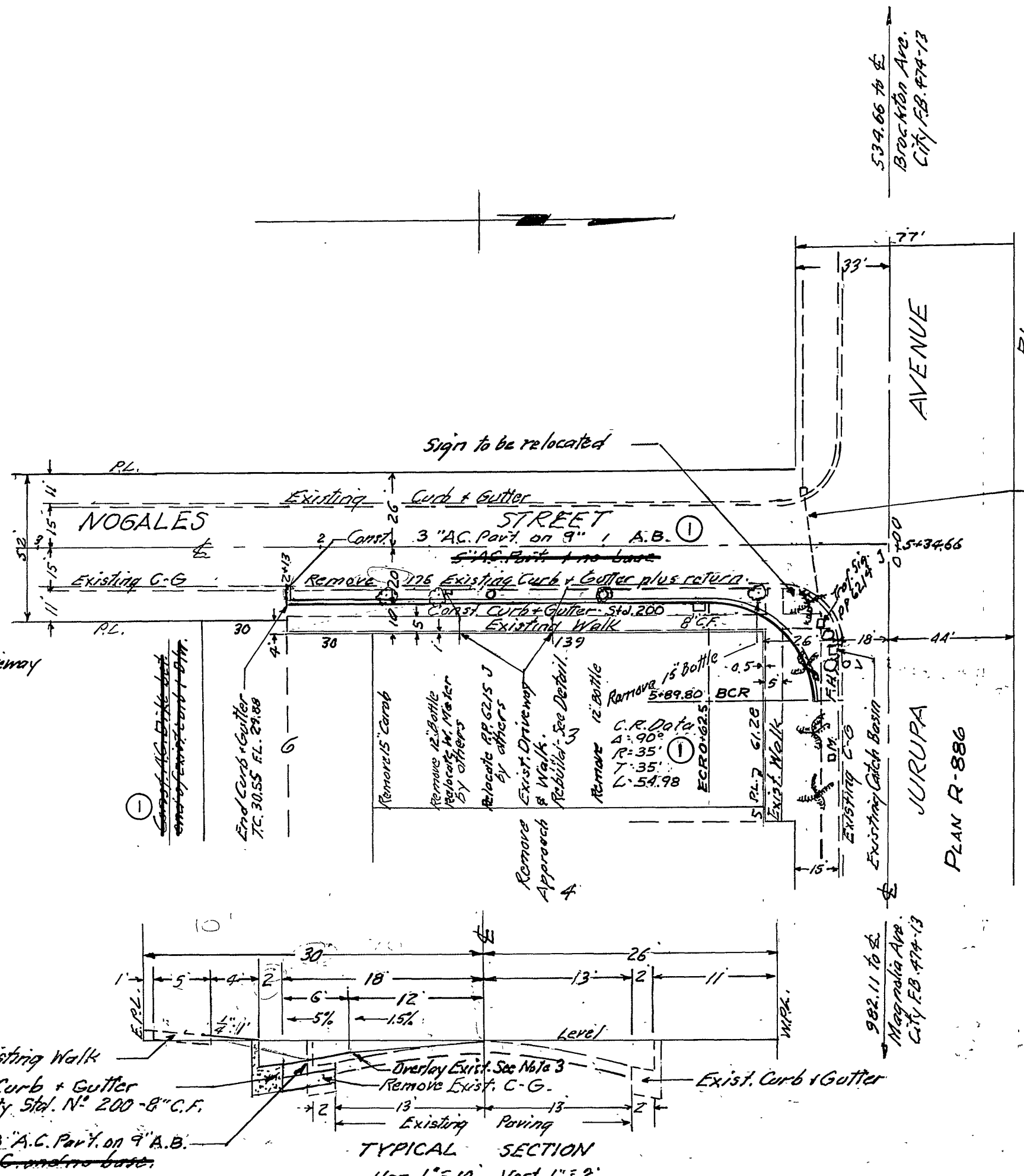
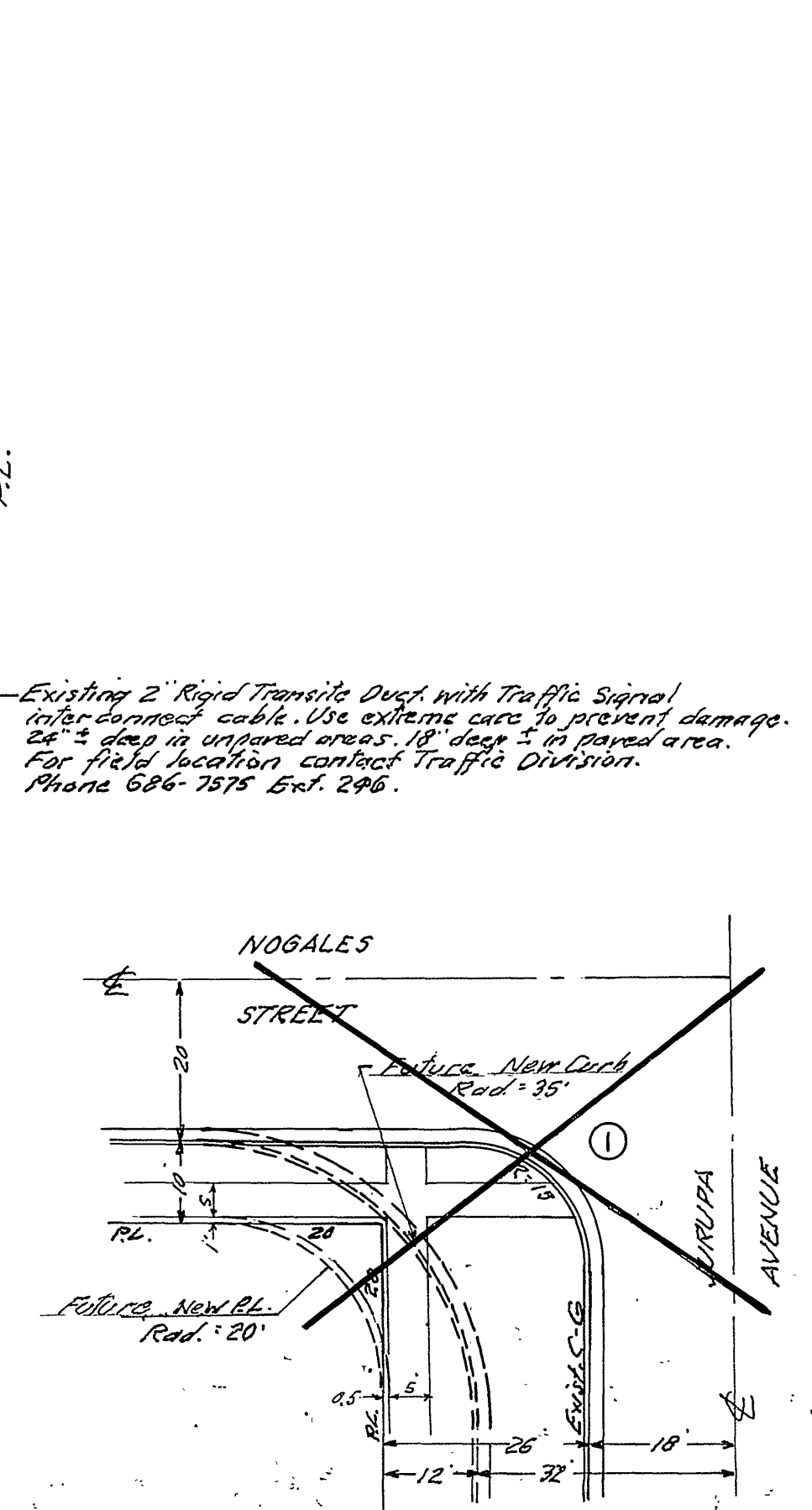


DETAIL SHOWING LOCATION OF DRIVEWAY APPROACH
Scale: 1" = 20'



TYPICAL SECTION
Hor. 1" = 10' Vert. 1" = 2'



DETAIL OF FUTURE CURB RADIUS
Scale: 1" = 20'

- Trim edge of existing pavement, where new paving joins existing pavement, to a clean, straight line. Construct match-up paving as shown and overlay paving as directed in the field to produce a smooth crown section.
- 4. Prime coat, seal coat, and paint binder are required.
- 5. Contact Park & Recreation Dept. as to relocation of Palm tree and removal and/or replacement of other street trees.

City B.M. - 5.74 in East Curb of
Brockton Ave. 15' S. of S.P.L. of
Jurupa Ave.
Elev. = 826.185

INDEXED
F. DAVIDSON-CIVIL ENGINEER
R.E. NO. 962
RIVERSIDE, CALIFORNIA
APPROVED BY *Gene S. McCarty* DATE 1/15/64

CITY OF RIVERSIDE, CALIFORNIA
DEPARTMENT OF PUBLIC WORKS

STREET PLAN & P.P.
NOGALES STREET
ZONE CASE R-45-601
HORIZ. SCALE 1" = 40'
APPROVED BY *Omara*
R-849
DATE 4-29-64

Approved *John L. Brundage*
Park and Recreation Dept.
Date 3-26-64

W.D. 12131 EB 620-29