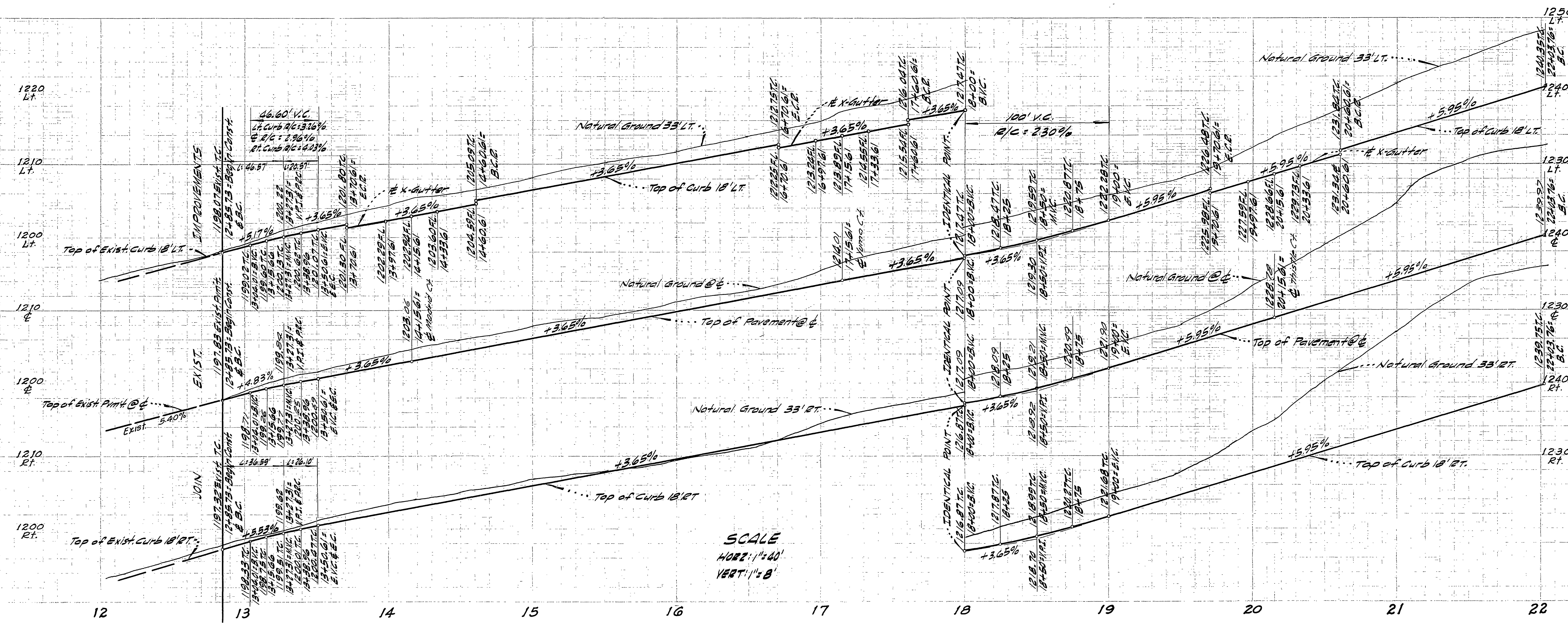
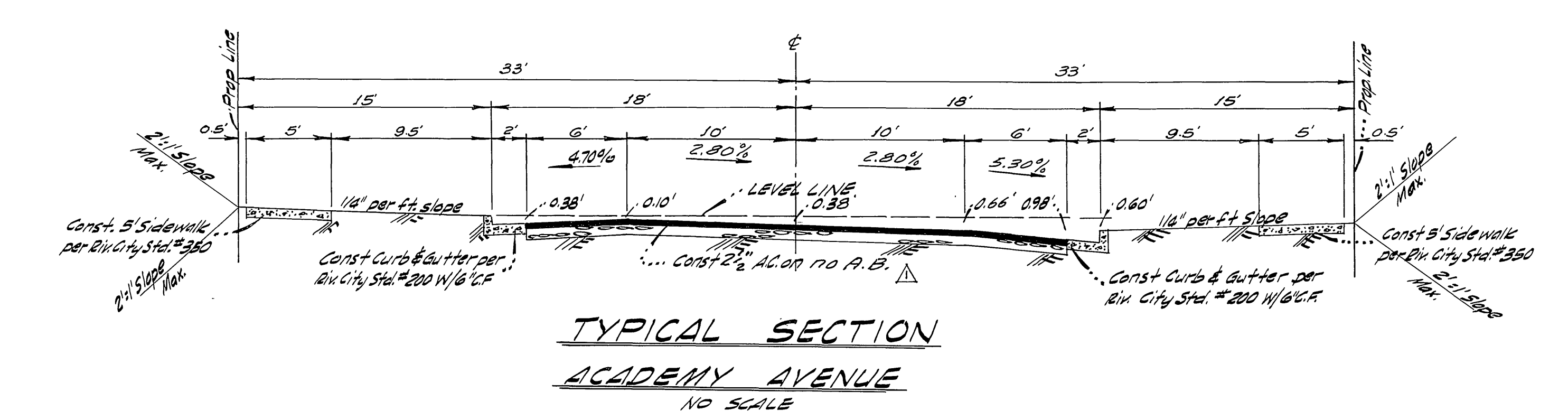
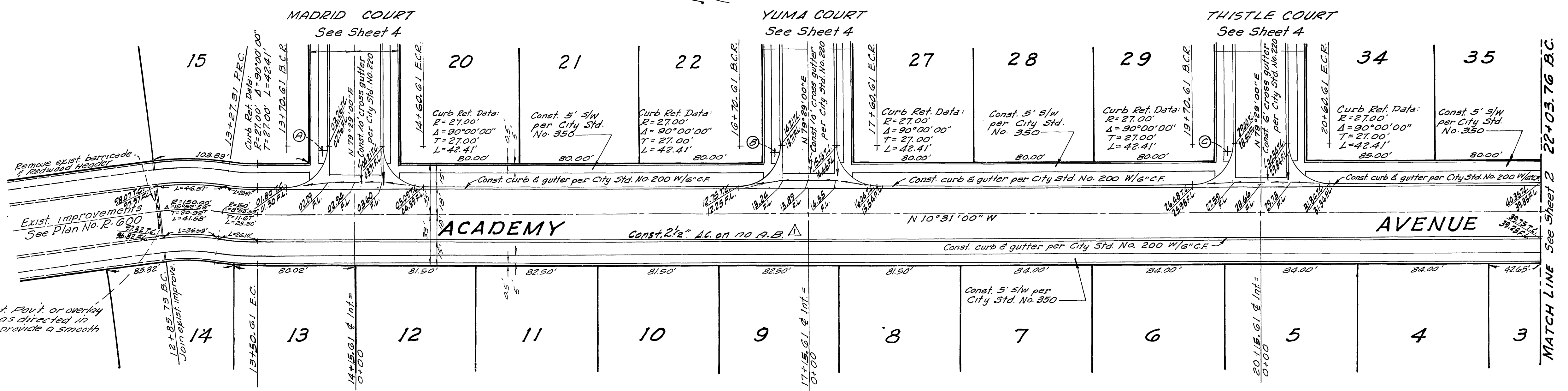


- GENERAL NOTES:-**
1. It shall be the responsibility of the contractor to clear the right of way in accordance with the provisions of law as it affects each utility including irrigation lines and appurtenances and at no cost to the City.
 2. Construction shall be in accordance with the City of Riverside, Department of Public Works, Specifications No. 461 and Standard Drawings.
 3. Prime coat, seal coat, and paint binder are required.
 4. Grading will require a permit under Ordinance 3093 for a cut or fill exceeding 100 cubic yards, or a fill over one foot in depth.
 5. Developer shall furnish and install Street Name signs and posts as per City Std. Dwg. No. 602.
 6. Trim edge of existing pavement, where new paving joins existing pavement, to a clean, straight line. Construct match-up paving as shown and overlay paving as directed in the field to produce a smooth crown section.
 7. A soil test shall be taken by the Developer, the results of which shall be verified by the Public Works Department prior to determining the thickness of the Base Material.
 8. It shall be the responsibility of the Contractor to notify Pacific Telephone (phone 684-0071) 24 hrs in advance of construction.



SCALE
 HORZ: 1"=40'
 VERT: 1"=8'



STREET NAME SIGN SCHEDULE

A	ACADEMY AVENUE
B	MADRID COURT
C	YUMA COURT
D	ACADEMY AVENUE
E	THISTLE COURT
F	ACADEMY AVENUE
G	DOLPHIN STREET
H	DOLPHIN STREET
I	BARRANCA DRIVE

Contact Traffic Division 686-7515 Ext. 246
 Before ordering signs for Street Block Numbers.

BENCH MARK: R.R. Spike in Palm Tree
 East Side Alessandro Blvd.
 ELEV: 1248.88

CRAWLEY AND HAWKINS
 ENGINEERS AND SURVEYORS
 RIVERSIDE 6, CALIFORNIA
 APPROVED *George O. Crawley* FB 62
 REV. NO. 9455 DATE: 4-13-62

MARK	DATE	DESCRIPTION
Δ	4-29-65	Added pavement & base construction Crawley & Hawkins George O. Crawley, District Chief Bob W. Wadsworth, District Engineer

CITY OF RIVERSIDE, CALIFORNIA
 DEPARTMENT OF PUBLIC WORKS

STREET PLAN & PROFILE
TRACT NO. 2903
 ACADEMY AVE. Between Sta. 12+85.73 & 22+03.76

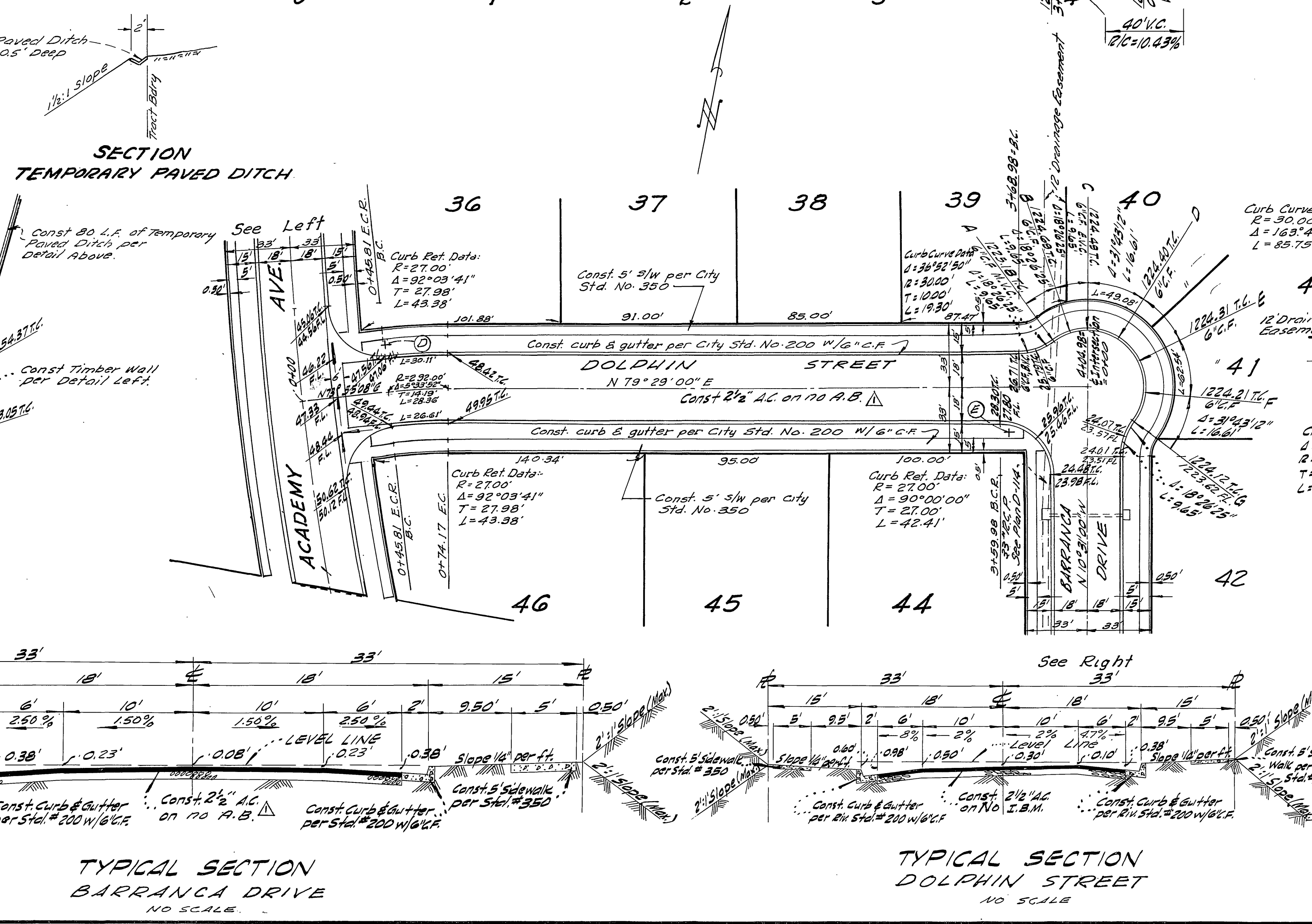
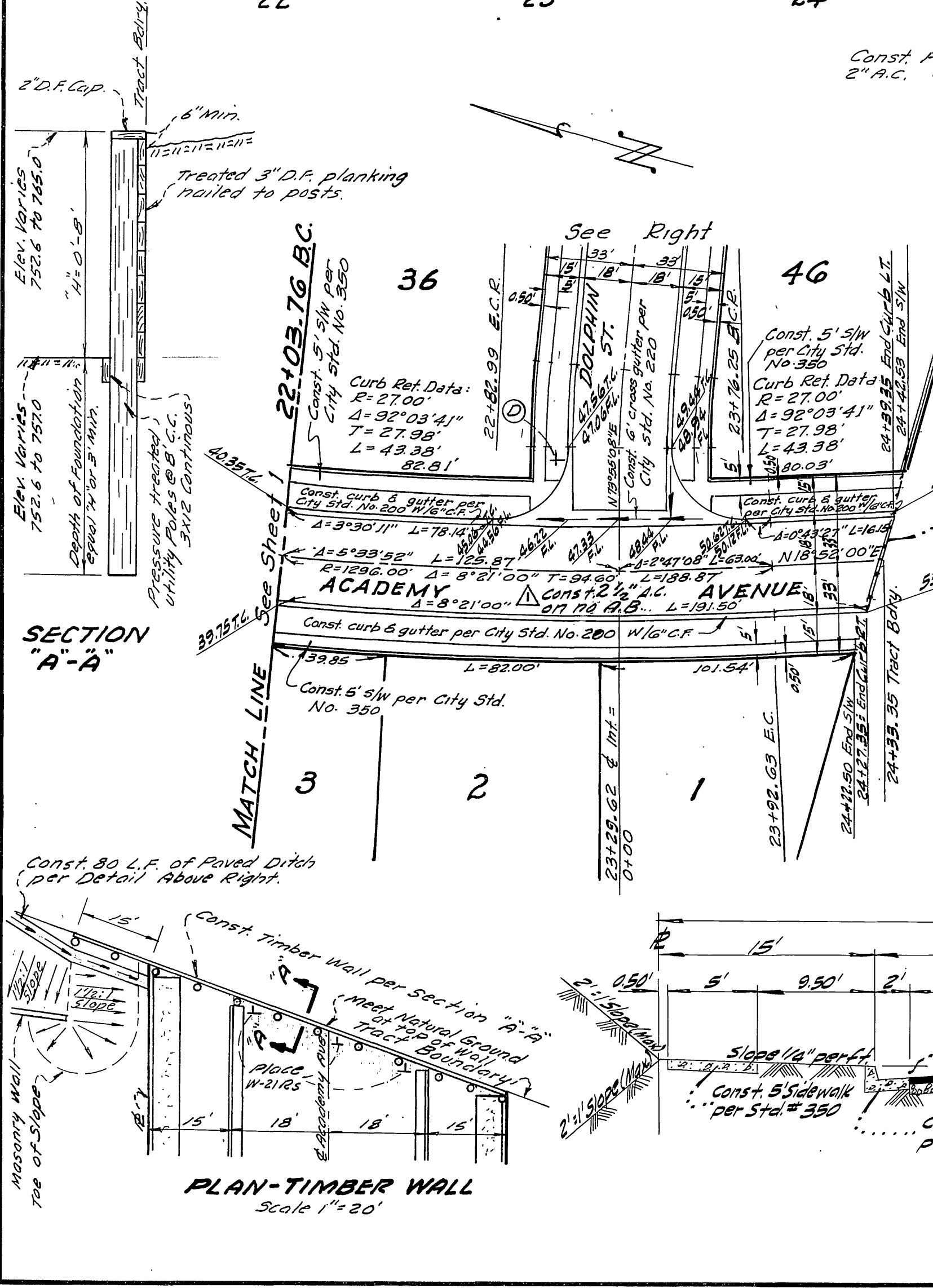
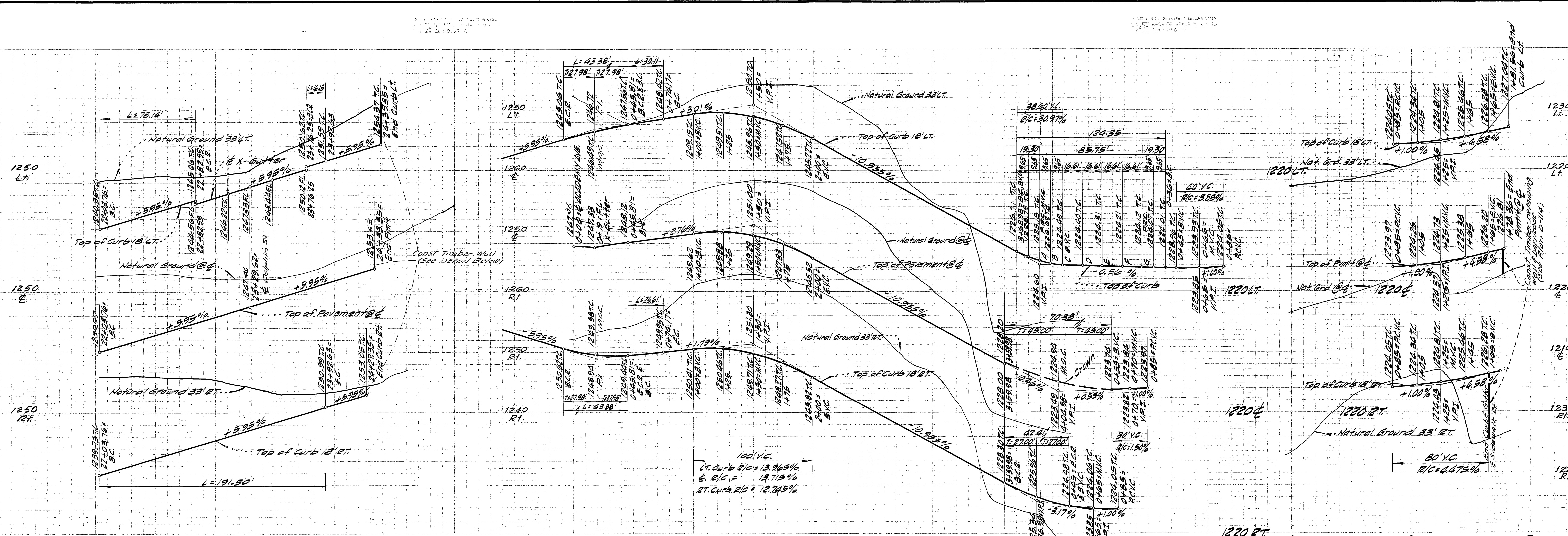
HORIZ. SCALE: 1"=40' VERT. SCALE: 1"=8'

DESIGNED BY: *W. J. Gordon* SUBMITTED BY: *W. J. Gordon* APPROVED BY: *W. J. Gordon*
 TRAFFIC DIV. DATE: 1-11-65

PROJECT NO. **R-868**

1 4

Indexed by 306



CRAWLEY AND HAWKINS
ENGINEERS AND SURVEYORS
RIVERSIDE, CALIFORNIA
APPROVED *George O. Crawley* FB. 62/1-
RE. NO. 9455 DATE: 7-12-64

CITY OF RIVERSIDE, CALIFORNIA
DEPARTMENT OF PUBLIC WORKS

STREET PLAN & PROFILE
TRACT NO. 2903
Approximate line showing location of Dolphin St. to Barranca St. from Dolphin St. to Tract Boundary
Barranca St. from Dolphin St. to Tract Boundary

DESIGNER: *William D. Jordan*
DRAWN: *W. Jordan*
DATE: 1-11-65

REVISIONS

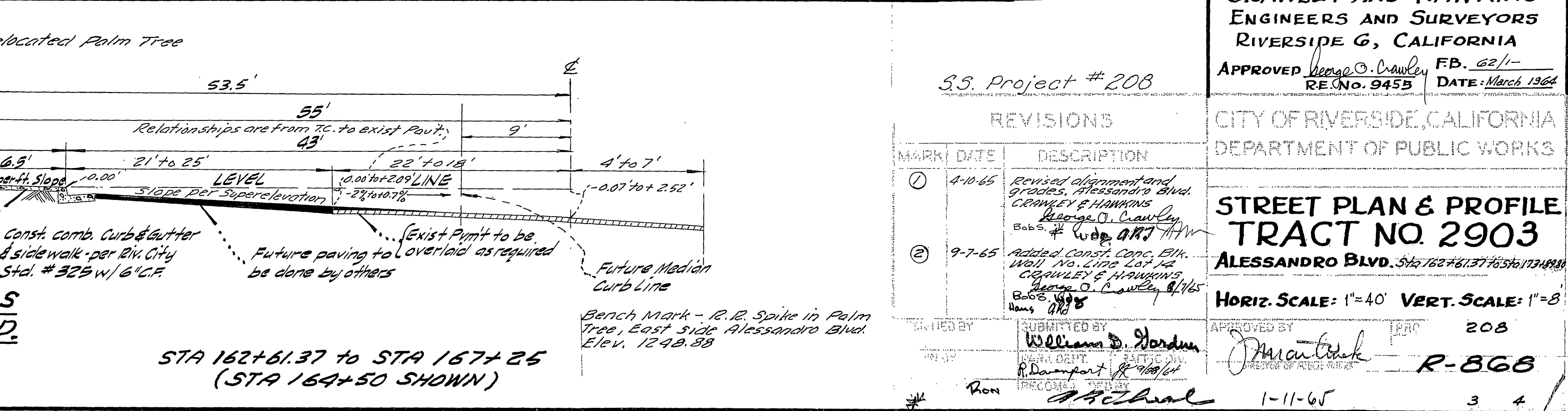
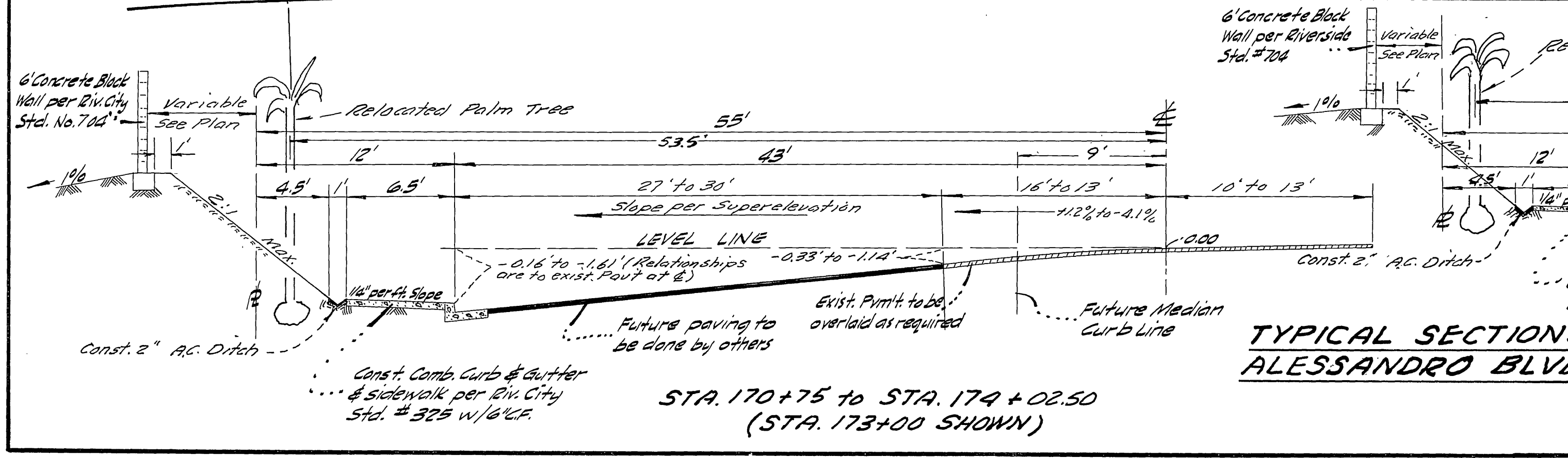
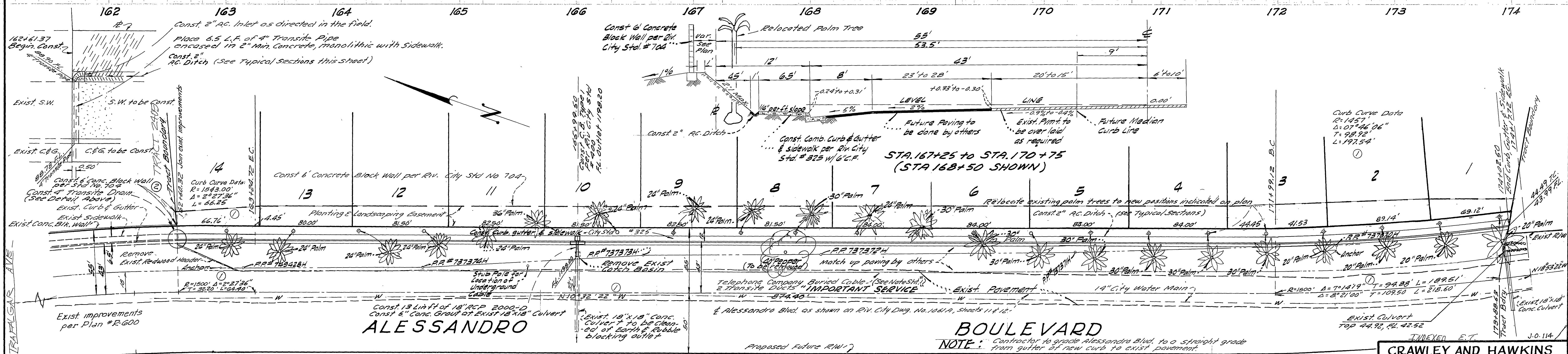
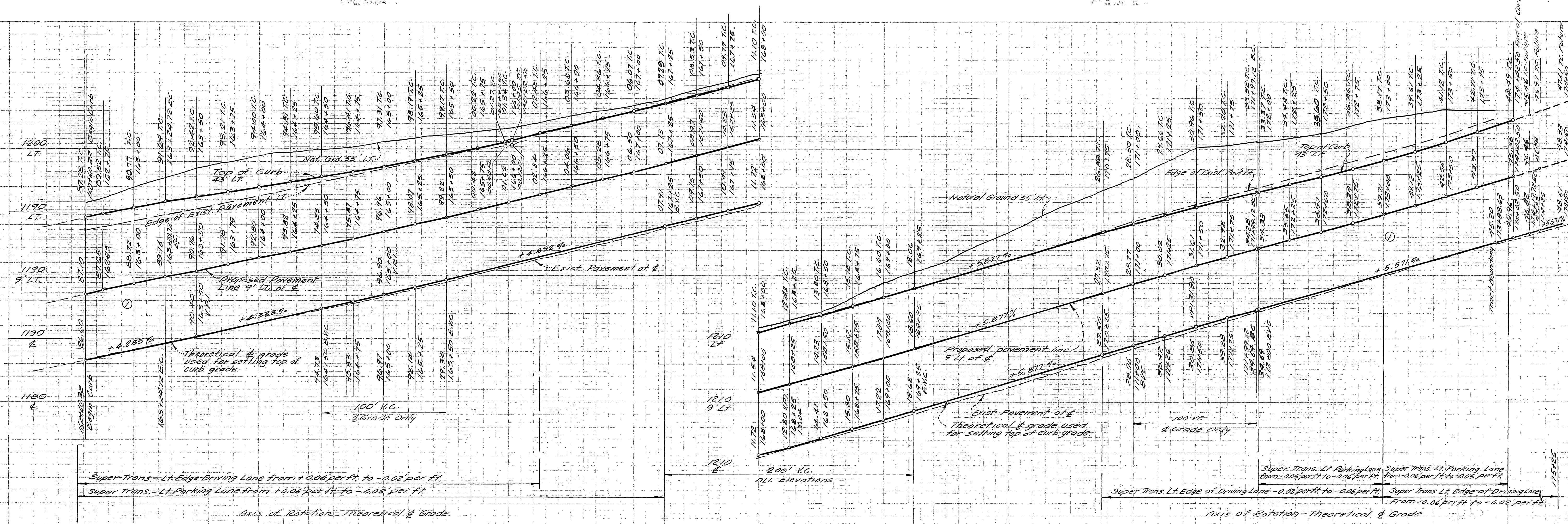
MARK	DATE	DESCRIPTION
Δ	4-29-65	Added pavement & base requirements CRAWLEY & HAWKINS George O. Crawley Bobs. J. H. W. G. RAY

REVISIONS

MARK	DATE	DESCRIPTION
Δ	4-29-65	Added pavement & base requirements CRAWLEY & HAWKINS George O. Crawley Bobs. J. H. W. G. RAY

REVISIONS

MARK	DATE	DESCRIPTION
Δ	4-29-65	Added pavement & base requirements CRAWLEY & HAWKINS George O. Crawley Bobs. J. H. W. G. RAY



CRAWLEY AND HAWKINS
ENGINEERS AND SURVEYORS
RIVERSIDE, CALIFORNIA

Project # 208

APPROVED: *George O. Crawley* FB: 62/1-
RE No. 9455 DATE: March 1964

CITY OF RIVERSIDE, CALIFORNIA
DEPARTMENT OF PUBLIC WORKS

STREET PLAN & PROFILE
TRACT NO. 2903
ALESSANDRO BLVD. STA. 162+61.37 TO STA. 174+02.50

HORIZ. SCALE: 1"=40' VERT. SCALE: 1"=8'

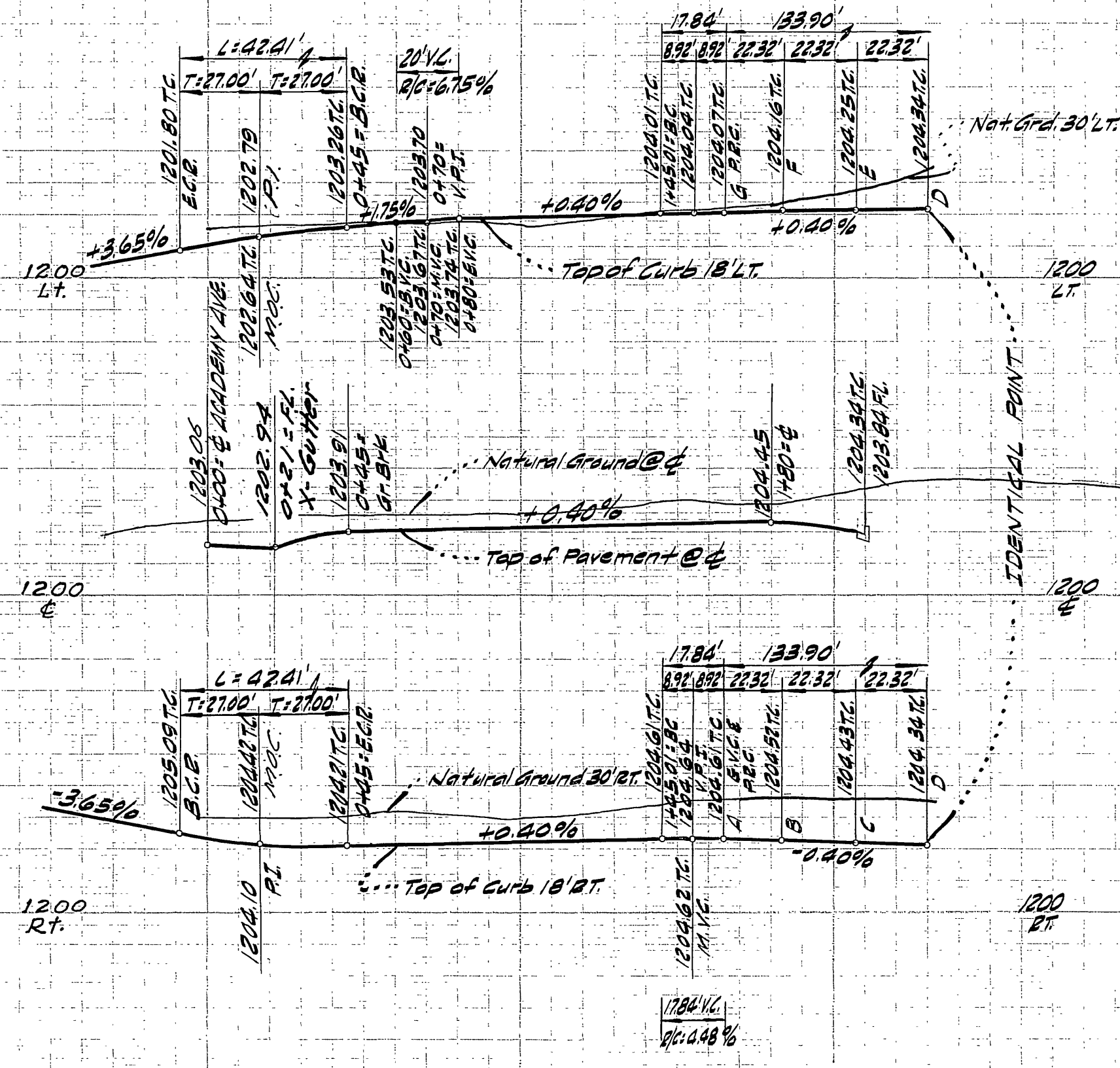
APPROVED BY: *William D. Jordan* FB: 208
DATE: 1-11-65

REVISIONS:

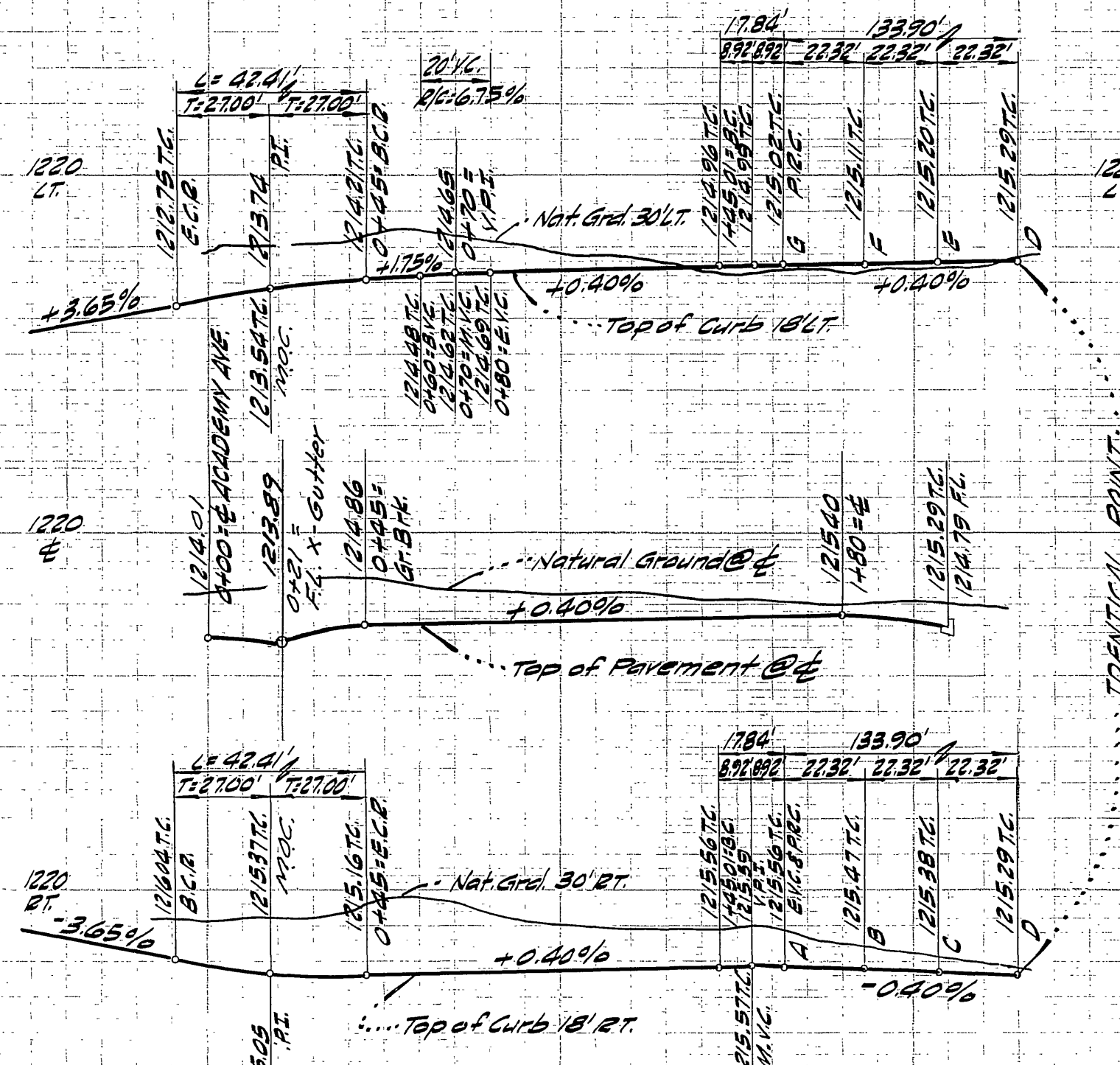
MARK	DATE	DESCRIPTION
①	4-10-65	Revised alignment and grades, Alessandro Blvd. Crawley & Hawkins
②	9-7-65	Added Const. Conc. Pln. Wall to side of Alessandro Blvd. Crawley & Hawkins

Submitted by: *William D. Jordan*
Checked by: *George O. Crawley*
Date: 1-11-65

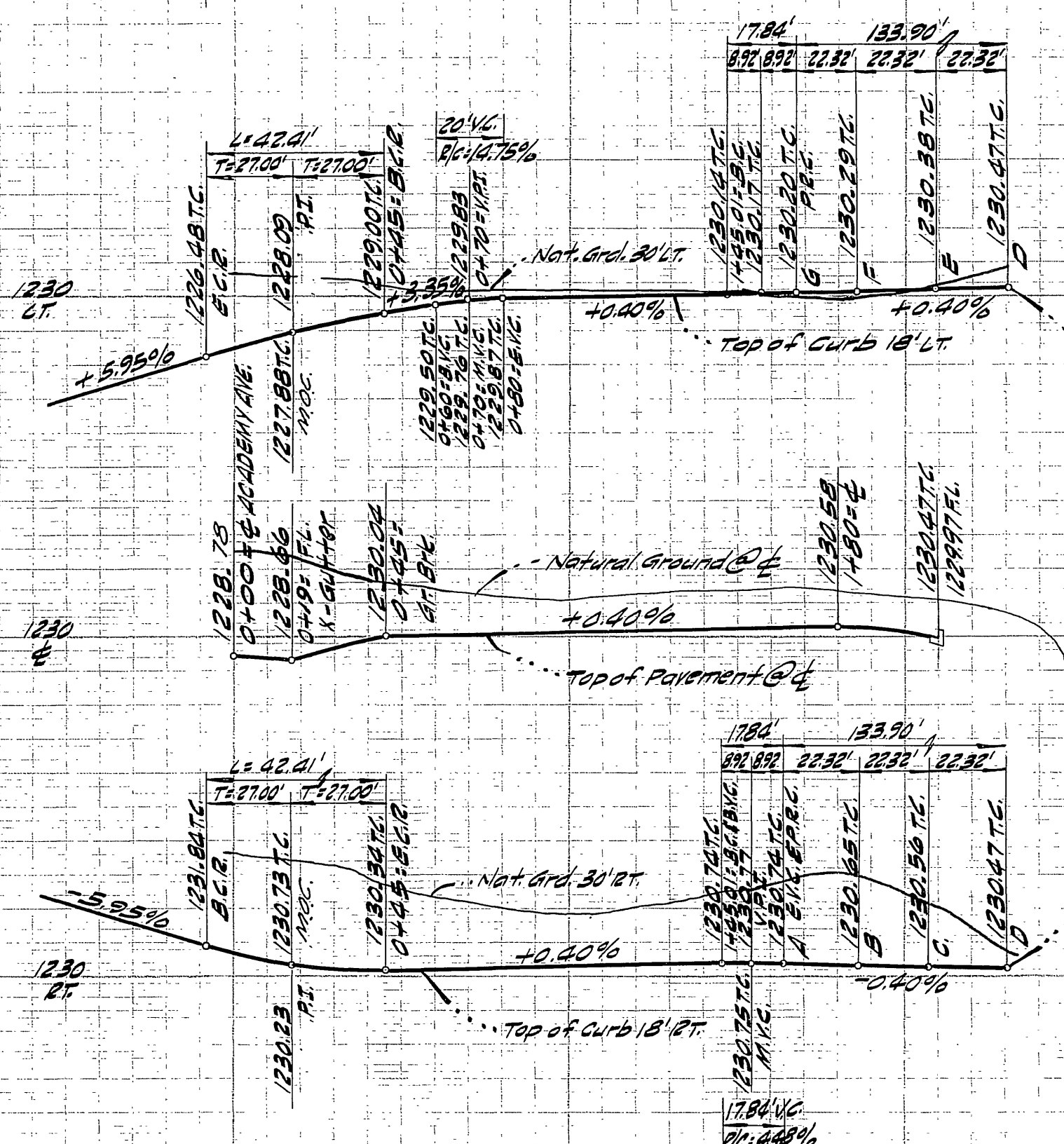
R-868



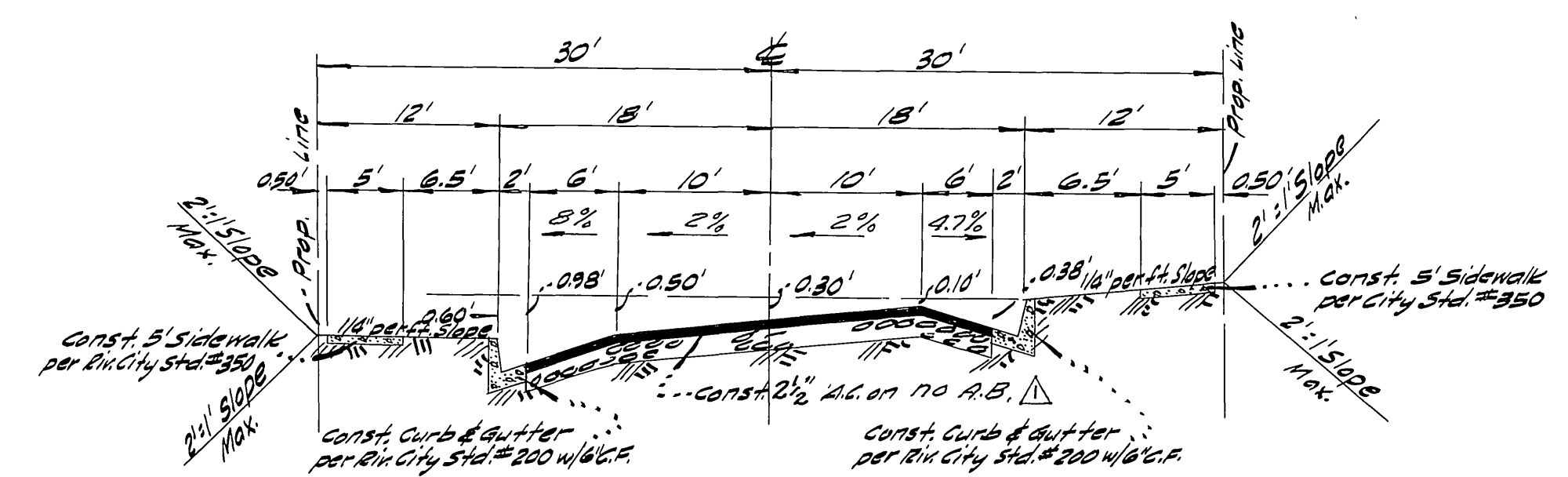
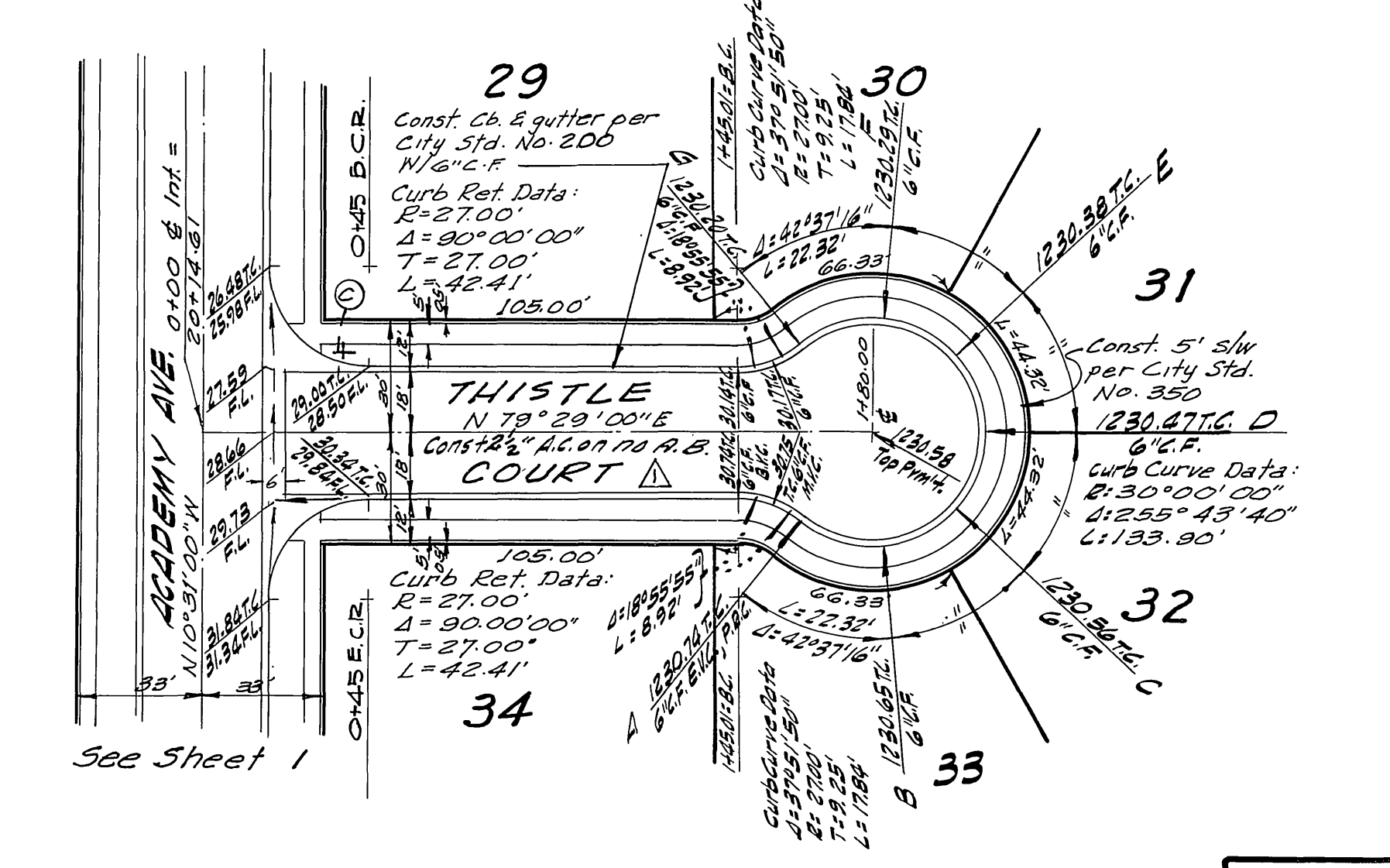
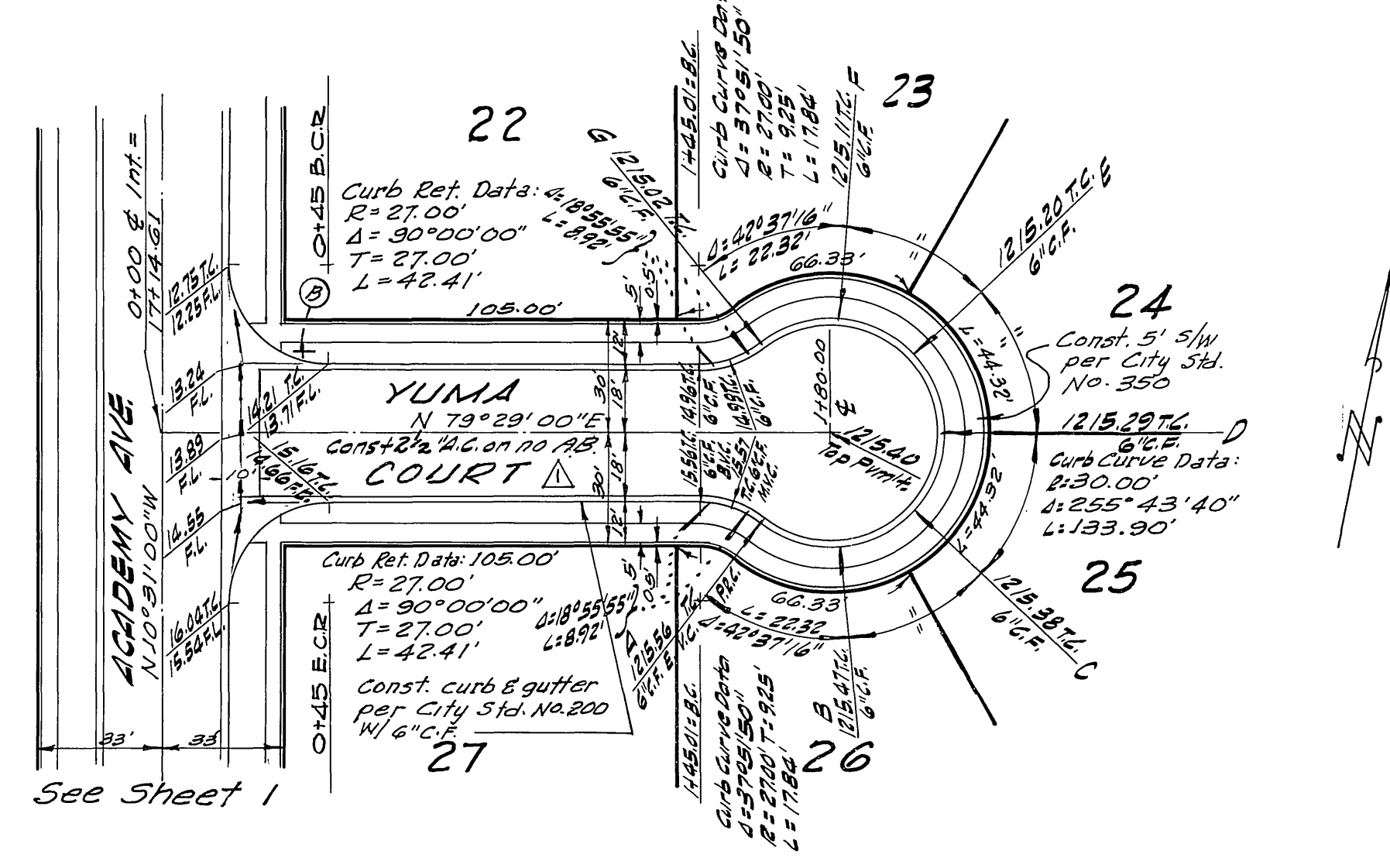
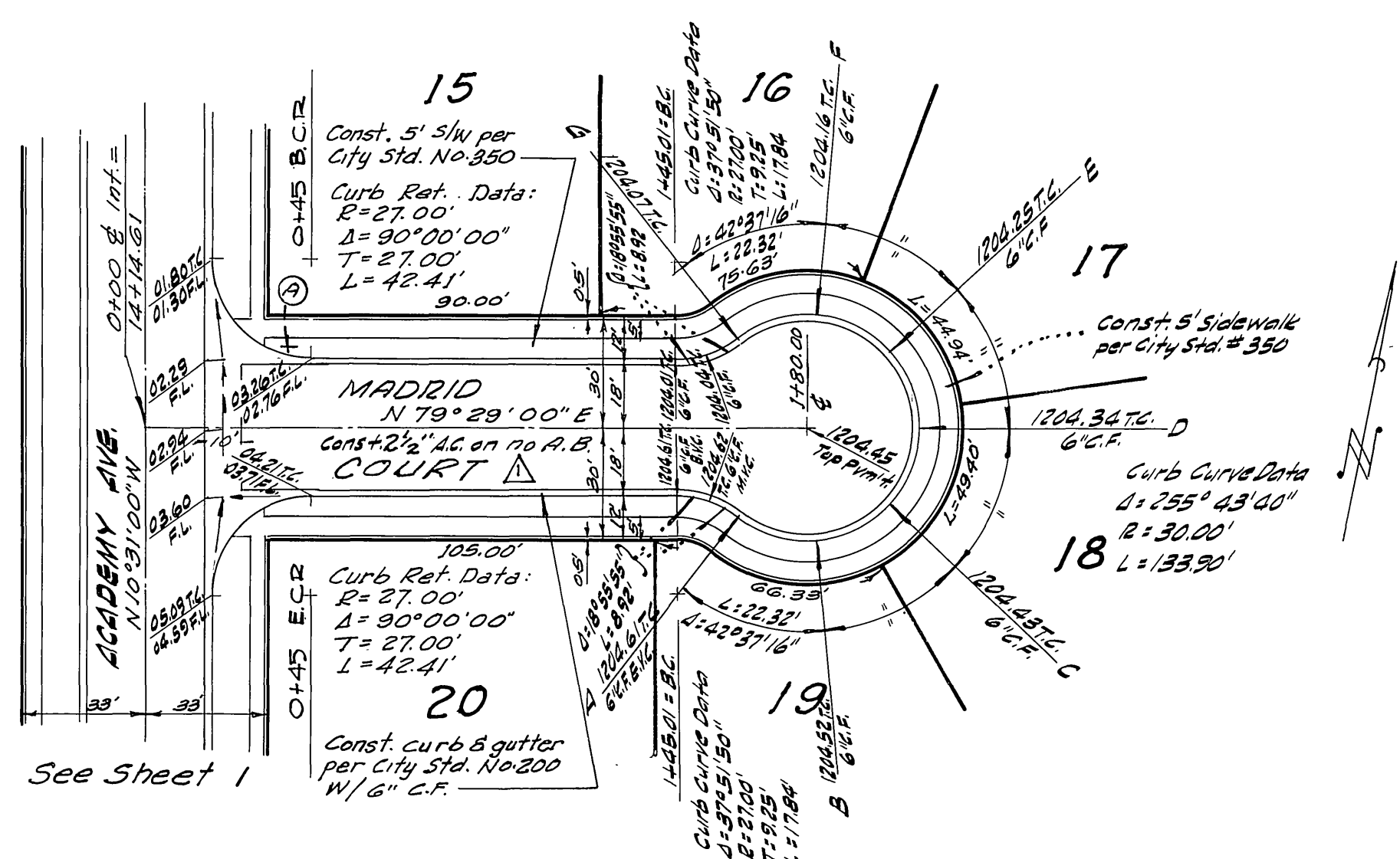
SCALE
HORIZ: 1" = 40'
VERT: 1" = 8'



SCALE
HORIZ: 1" = 40'
VERT: 1" = 8'



SCALE
HORIZ: 1" = 40'
VERT: 1" = 8'



TYPICAL SECTION
MADRID, YUMA & THISTLE COURTS
No Scale

BENCH MARK: R.R. Spike in Palm Tree
East Side Alessandro Blvd.
ELEV: 1248.88

J.O.114
CRAWLEY AND HAWKINS
ENGINEERS AND SURVEYORS
RIVERSIDE, CALIFORNIA
APPROVED: *George O. Crawley* E.B. 62
RE No. 9455 DATE: 4/19/65

MARK	DATE	DESCRIPTION
△	4-29-65	Revised Pavement & base per City Standards CRAWLEY & HAWKINS George O. Crawley, Data Thistle Bob E. ... (A)

CITY OF RIVERSIDE, CALIFORNIA
DEPARTMENT OF PUBLIC WORKS

STREET PLAN & PROFILE
TRACT NO. 2903

Madrid Ct - Academy Ave to Sta 1180.00
Thistle Ct - Academy Ave to Sta 1180.00

HORIZ. SCALE: 1" = 40' VERT. SCALE: 1" = 8'

DESIGNED BY: *William D. Jordan*
DRAWN BY: *W.D. Jordan*
CHECKED BY: *W.D. Jordan*
DATE: 1-11-65
PROJECT NO. **R-868**
PAGE 4 OF 4