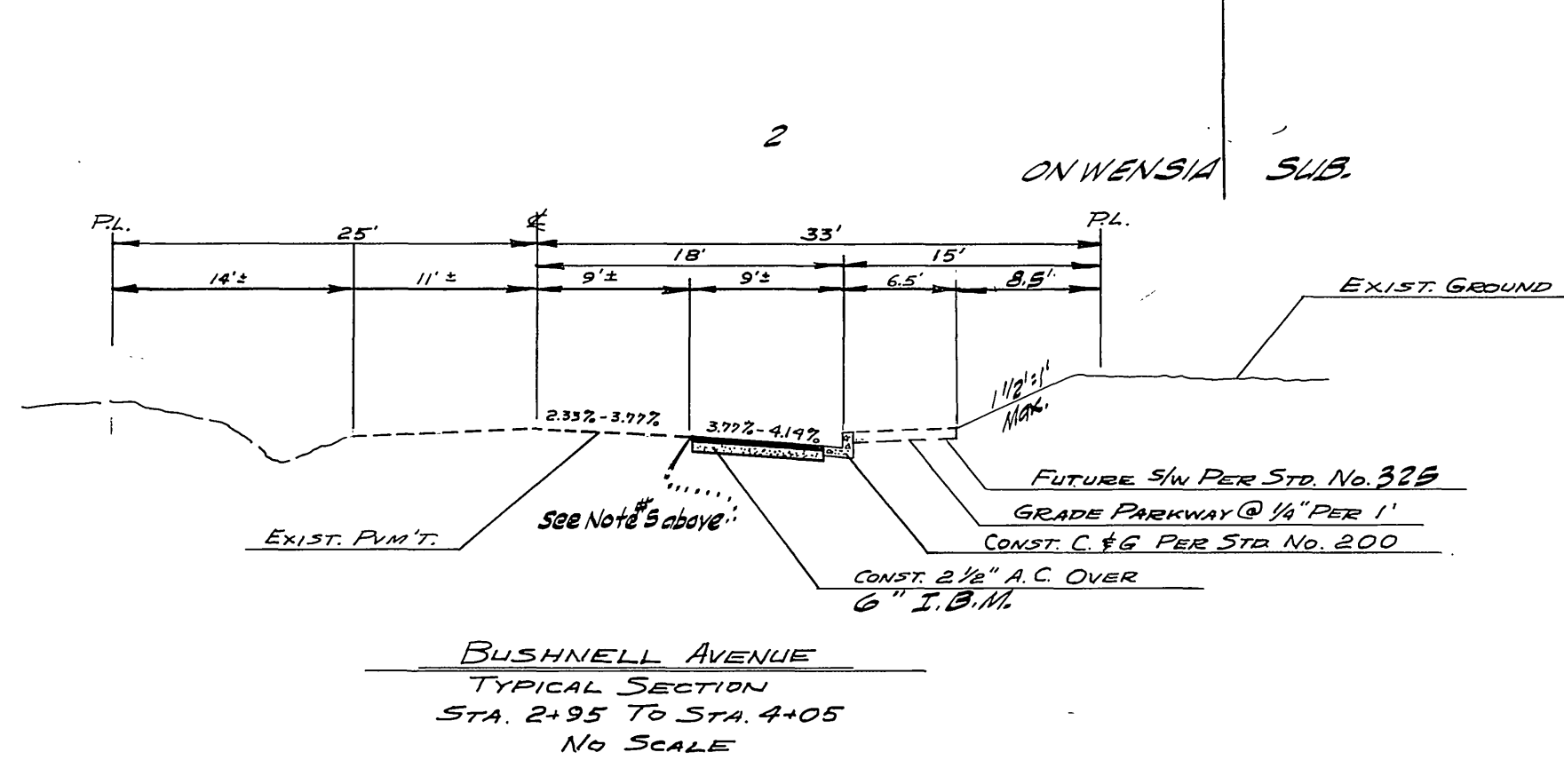
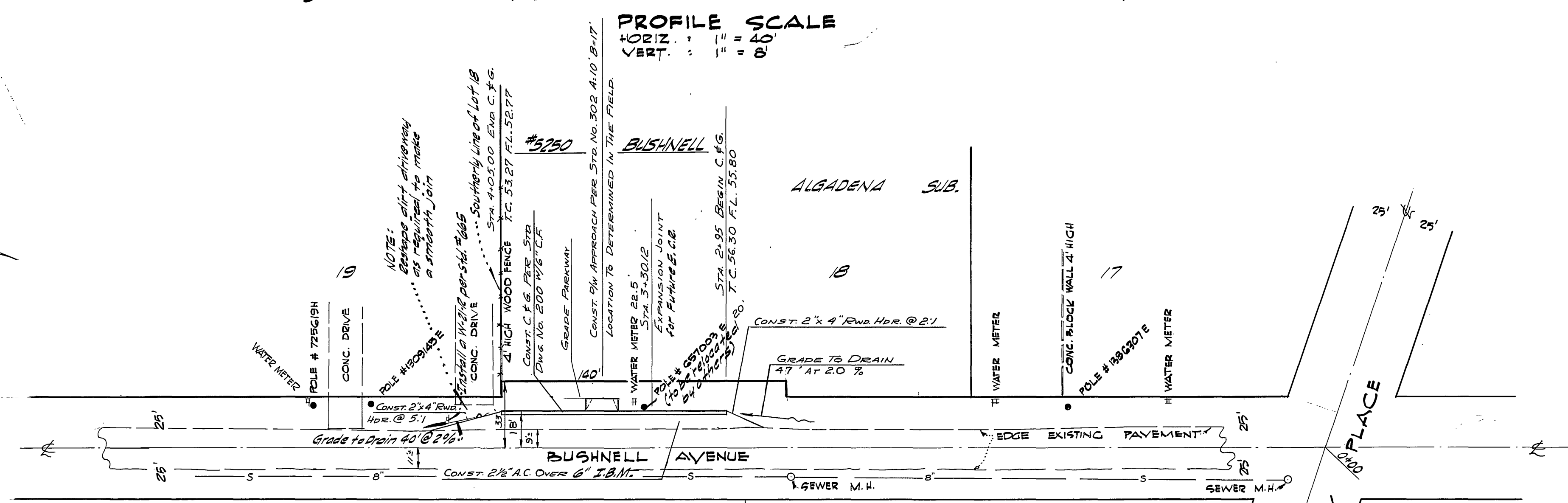
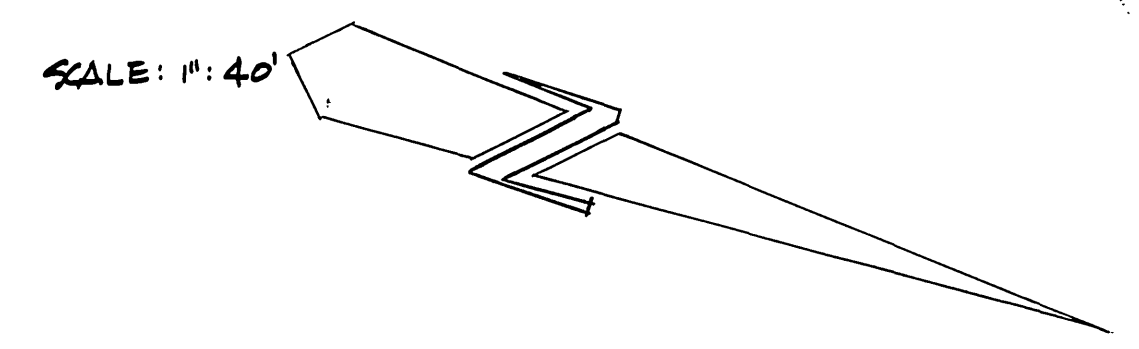


- GENERAL NOTES**
1. IT SHALL BE THE RESPONSIBILITY OF THE CONTRACTOR TO CLEAR THE RIGHT OF WAY IN ACCORDANCE WITH THE PROVISIONS OF LAW AS IT AFFECTS EACH UTILITY INCLUDING IRRIGATION LINES AND APPURTENANCES AND AT NO COST TO THE CITY.
 2. CONSTRUCTION SHALL BE IN ACCORDANCE WITH THE CITY OF RIVERSIDE DEPARTMENT OF PUBLIC WORKS, SPECIFICATIONS NO. 461 AND STANDARD DRAWINGS.
 3. PRIME COAT, SEAL COAT & PAINT BINDER ARE REQUIRED.
 4. GRADING WILL REQUIRE A PERMIT UNDER ORDINANCE 3093 FOR A CUT OR FILL EXCEEDING 100 CUBIC YARDS, OR A FILL OVER ONE FOOT IN DEPTH.
 5. TRIM EDGE OF EXISTING PAVEMENT, WHERE NEW PAVING JOINS EXISTING PAVEMENT, TO A CLEAN STRAIGHT LINE. CONSTRUCT MATCH-UP PAVING AS SHOWN AND OVERLAY PAVING AS DIRECTED IN THE FIELD TO PRODUCE A SMOOTH CROWN SECTION.

PROFILE SCALE
 HORIZ. : 1" = 40'
 VERT. : 1" = 8'



⊕ BENCH MARK : R.R. SPIKE IN POLE # 581503 H. NORTH-EAST CORNER GRAMERCY PLACE AND JONES AVENUE. ELEV. = 751.825

INDEXED P.L.M.
CRAWLEY & HAWKINS
 ENGINEERS & SURVEYORS
 RIVERSIDE, CALIFORNIA
 REG. 54/37-42
 APPROVED *George O. Crawley* DATE 6-2-64
 U.C.E. # 9455

REVISIONS		
MARK	DATE	DESCRIPTION

CITY OF RIVERSIDE, CALIFORNIA
 DEPARTMENT OF PUBLIC WORKS

STREET PLAN & PROFILE
BUSHNELL AVENUE
 WESTERLY SIDE
 FROM GRAMERCY PLACE TO 600' SOUTHWEST

SCALE: HORIZ. 1"=40' VERT. 1"=8'

DESIGNED BY <i>Wm. D. Gardner</i>	SUBMITTED BY <i>Wm. D. Gardner</i>	APPROVED BY <i>George O. Crawley</i>	PRJ. NO. R-869
DRAWN BY <i>Wm. D. Gardner</i>	CHECKED BY <i>Wm. D. Gardner</i>	DATE 7-15-64	