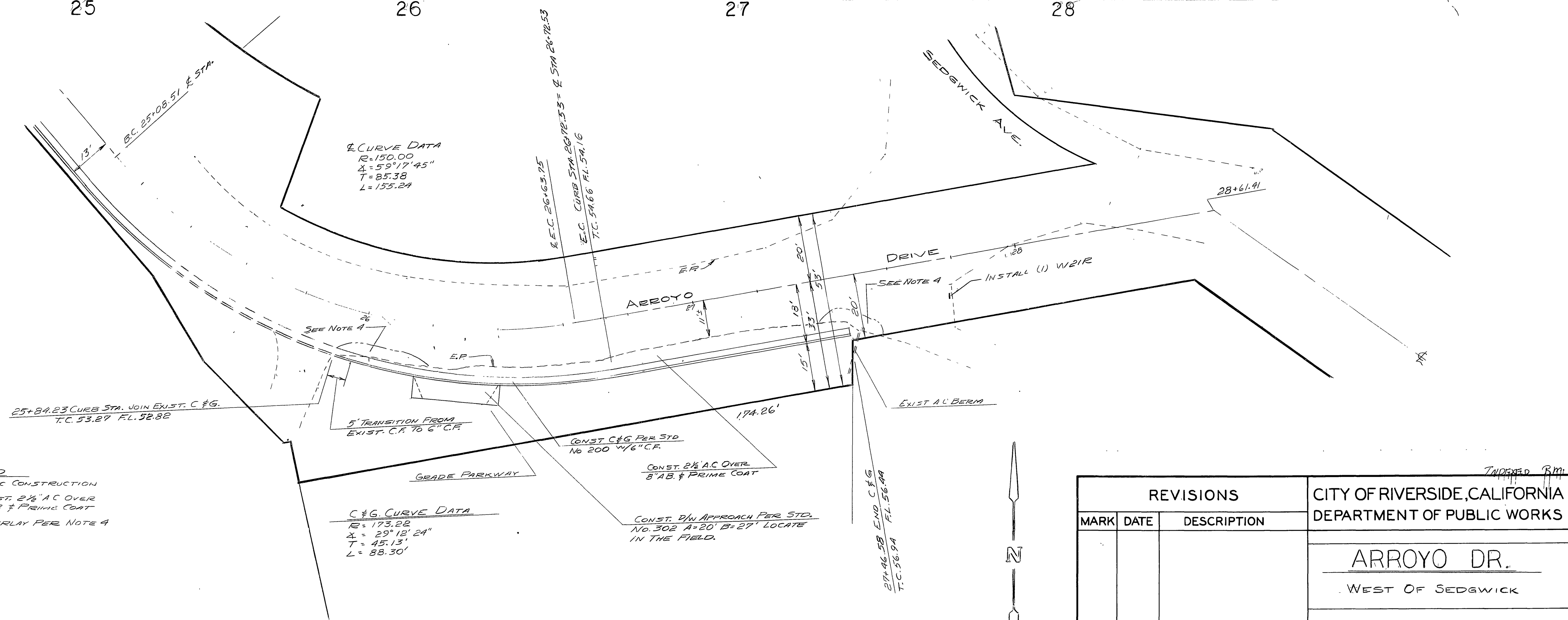


B.M. 963.77 R.R. SPIKE IN
R.R. # 8073 U 100'E'LY
OF SEDGWICK
F.B. 662-59/61
VERT. 1" = 2'
SCALE HORIZ. 1" = 20'

PROFILE

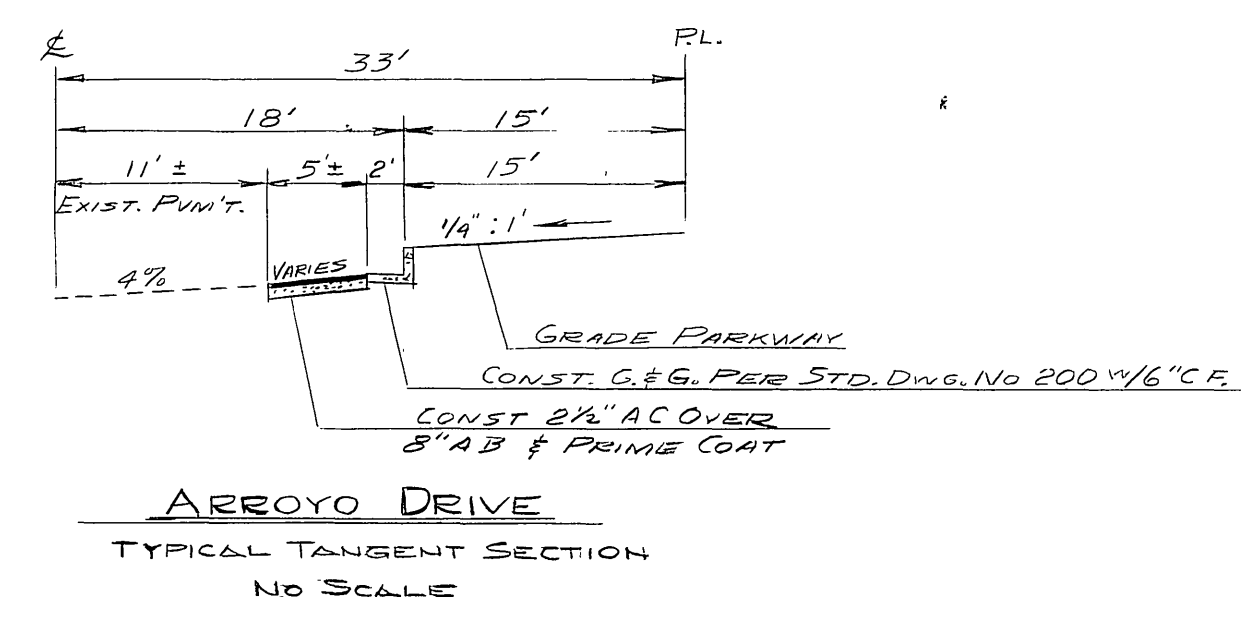
NO.	DATE

- NOTES**
- IT SHALL BE THE RESPONSIBILITY OF THE CONTRACTOR TO CLEAR THE RIGHT OF WAY IN ACCORDANCE WITH THE PROVISIONS OF THE LAW AS IT AFFECTS EACH UTILITY INCLUDING IRRIGATION LINES AND APPURTENANCES AND AT NO COST TO THE CITY.
 - CONSTRUCTION SHALL BE IN ACCORDANCE WITH THE CITY OF RIVERSIDE, DEPARTMENT OF PUBLIC WORKS, SPECIFICATIONS NO. 461 AND STANDARD DRAWINGS.
 - PRIME COAT, PAINT BINDER AND ARE. REQUIRED.
 - TRIM EDGE OF EXISTING PAVEMENT, WHERE NEW PAVING JOINS EXISTING PAVEMENTS TO A CLEAN, STRAIGHT LINE. CONST. MATCH-UP PAVING AS SHOWN AND OVERLAY PAVING AS DIRECTED IN THE FIELD TO PRODUCE A SMOOTH CROWN SECTION.



LEGEND

	CONC. CONSTRUCTION
	CONST. 2 1/2" AC OVER 8" AB & PRIME COAT
	OVERLAY PER NOTE 4



REVISIONS			CITY OF RIVERSIDE, CALIFORNIA DEPARTMENT OF PUBLIC WORKS	
MARK	DATE	DESCRIPTION	ARROYO DR. WEST OF SEDGWICK	
DESIGNED BY	PPH	SUBMITTED BY	W. J. ...	APPROVED BY
DRAWN BY	A.W.	PARK DEPT.	TRAFFIC DIV.	PROJ. NO. 1112
CHECKED BY	BCH	RECOMMENDED BY	...	R-874
			DATE	6-5-64
			SHEET 1 OF 1	

PLAN

NO.	DATE