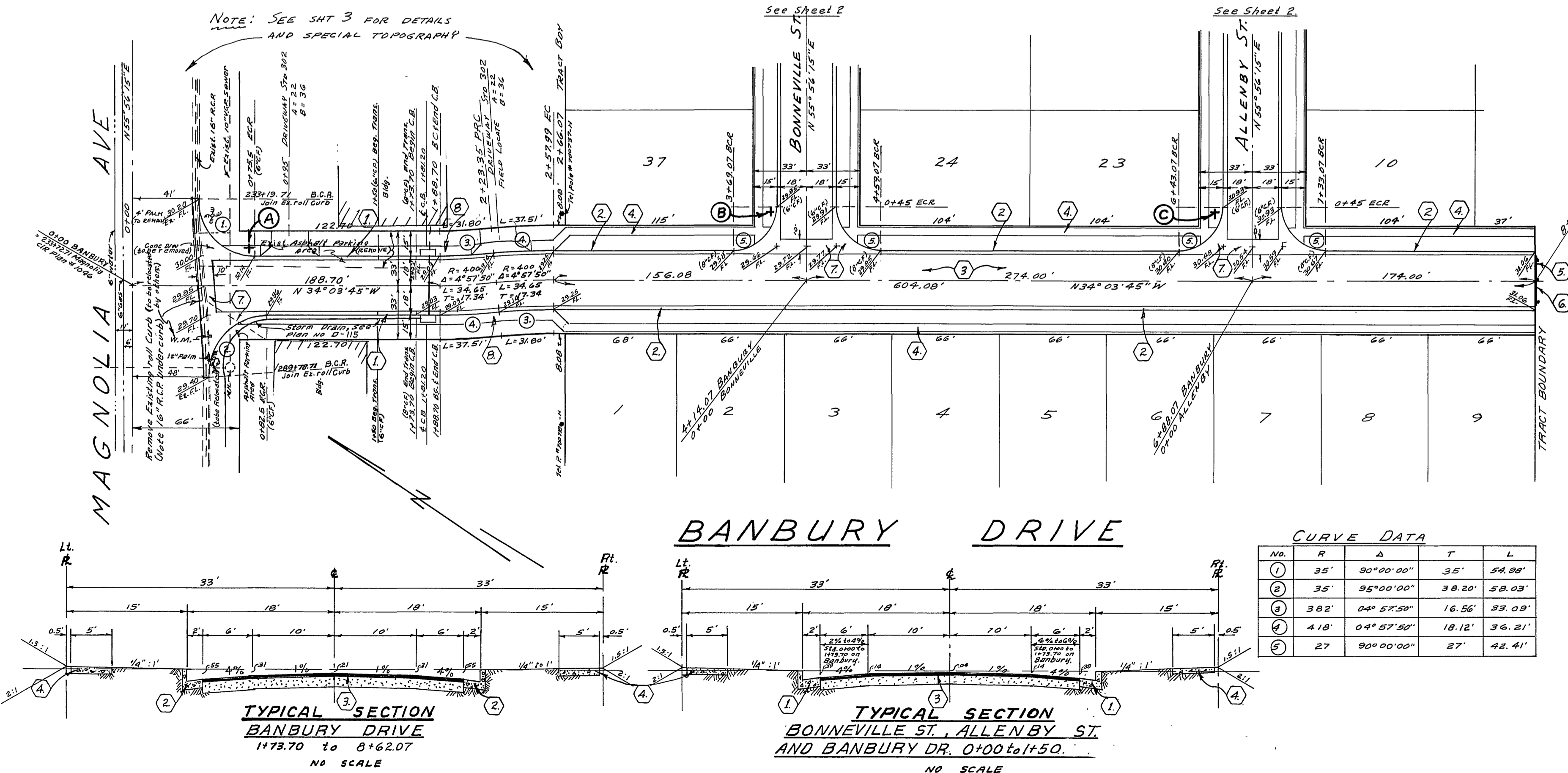


SEE D-243 FOR S.D. ON MAGNOLIA

BENCH MARK: Elev 743.20, F.R. 561, P. 2
3/8" Bolt set in Power Pole #12796-J at the South east Cor. of Tyler & Magnolia.

Scale: Horiz. 1" = 50'
Vert. 1" = 5'



CONSTRUCTION NOTES:

1. Const. Curb & Gutter Std. No. 200 (6" C.F.)
2. Const. Curb & Gutter Std. No. 200 (8" C.F.)
3. Const. 2 1/2" A.C. and seal coat over 3" I.B.M.
4. Const. R Sidewalk Std. No. 350
5. Const. Barricade Std. No. 180
6. Const. 2"x4" Redwood Header
7. Const. Cross Gutter Std. No. 220
8. Const. Curb Sidewalk Std. No. 325

GENERAL NOTES:

1. It shall be the responsibility of the Contractor to clear the right of way in accordance with the provisions of law as it affects each utility including irrigation lines and appurtenances and at no cost to the City.
2. Construction shall be in accordance with the City of Riverside, Department of Public Works, Specifications No. 461 and Standard Drawings.
3. Prime coat, seal coat, and paint binder are required.
4. Grading will require a permit under Ordinance 3093 for a cut or fill exceeding 100 cubic yards, or a fill over one foot in depth.
5. Street name signs & posts shall be furnished & installed as per City Std. Dwg. #662.

NOTICE TO CONTRACTOR: The existence and location of any underground utility pipes or structures shown on these plans are obtained by a search of the available records. To the best of our knowledge, there are no existing utilities except as shown on these plans. The Contractor is required to take due precautionary measures to protect the utility lines shown and any other lines not of record or not shown on these plans.

QUANTITY ESTIMATE:

Curb & Gutter Std. No. 200 (6" C.F.)	3,238	L.F.
Curb & Gutter Std. No. 200 (8" C.F.)	4,254	L.F.
2 1/2" A.C. & seal coat	57,880	S.F.
Sidewalk Std. No. 350	15,400	S.F.
Barricade Std. No. 180	3	EA.
2"x4" Redwood Header	96	L.F.
Cross Gutter Std. No. 220	2,332	S.F.
Imported Base Material (3")	536	C.Y.
Roll type Curb removal	183	L.F.
Sidewalk Std. No. 325	2,460	S.F.
DRIVEWAY APPROACH Std 302 4"x2" 6"x6"	2	EA.

STREET NAME SIGN SCHEDULE

No.	R	A	T	L
1	35'	90°00'00"	35'	59.88'
2	35'	95°00'00"	38.20'	58.03'
3	38.2'	04°57'50"	16.56'	39.09'
4	4.18'	04°57'50"	18.12'	36.21'
5	27'	90°00'00"	27'	42.41'

Contractor to contact City Traffic Division 686-7575 Ext. 246 Before ordering signs for street block numbers.

INDEXED

Approved By: *Edna L. Spaulding*
Park Superintendent
Date: 6-23-64

ALBERT A. WEBB ASSOCIATES
CIVIL ENGINEERS - RIVERSIDE, CALIFORNIA
APPROVED: *Edna L. Spaulding* DATE: 5/25/64

CITY OF RIVERSIDE, CALIFORNIA
DEPARTMENT OF PUBLIC WORKS

BANBURY DRIVE
TRACT No. 2797

REVISION	DATE	DESCRIPTION

DATE: MAY 1964
SCALE: As Shown
DRAWN: AW
CHECKED: *W. J. ...*
DATE: 6/26/64

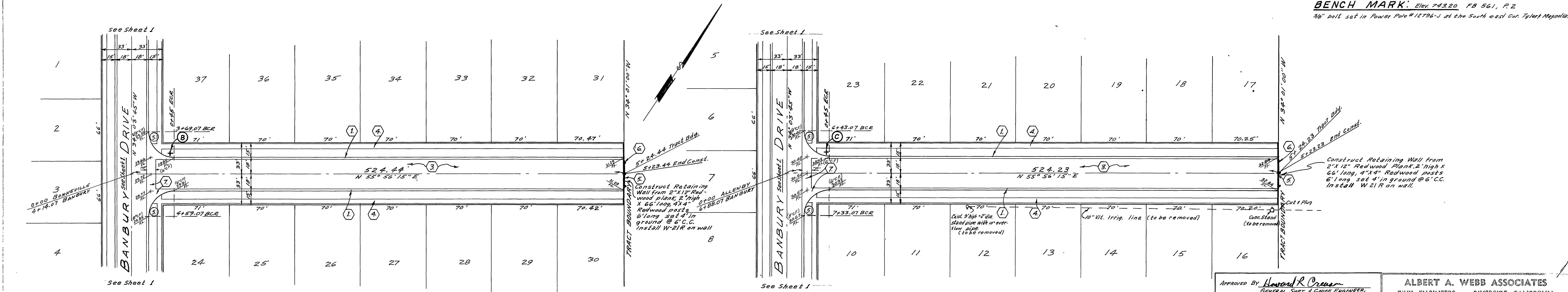
APPROVED BY: *Albert A. Webb*
DATE: 6/26/64

R-875
SHEET 1 OF 3
DWG No. 63-300-A



Scale Horiz. 1" = 50'
Vert. 1" = 5'

BENCH MARK: Elev. 743.20 FB 561, P. 2
36" bolt set in Power Pole #12736-J at the South east cor. Tylert Mayaniz



CURVE DATA:

No.	R	Δ	T	L
5	27'	90°00'00"	27'	42.41'

TYPICAL SECTION
see sheet 1

Approved By *Howard R. Owen*
GENERAL SUPT. & CHIEF ENGINEER,
WATER DEPT.
Date 6-23-64

ALBERT A. WEBB ASSOCIATES
CIVIL ENGINEERS - RIVERSIDE, CALIFORNIA
APPROVED *Paul N. Webb* DATE 5/25/64
E. 9876

CITY OF RIVERSIDE, CALIFORNIA
DEPARTMENT OF PUBLIC WORKS

STREET PLAN & PROFILE
BONNEVILLE STREET
ALLENBY STREET
TRACT No. 2797

MARK	DATE	DESCRIPTION

DATE MAY 1964	SCALE 1" = 50'	APPROVED BY <i>Paul N. Webb</i>	NO. R-875
DRAWN AW	W.D. 63-300	DIRECTOR OF PUBLIC WORKS	
CHECKED <i>[Signature]</i>	F.B. 561	DATE 6/26/64	SHEET 2 OF 3

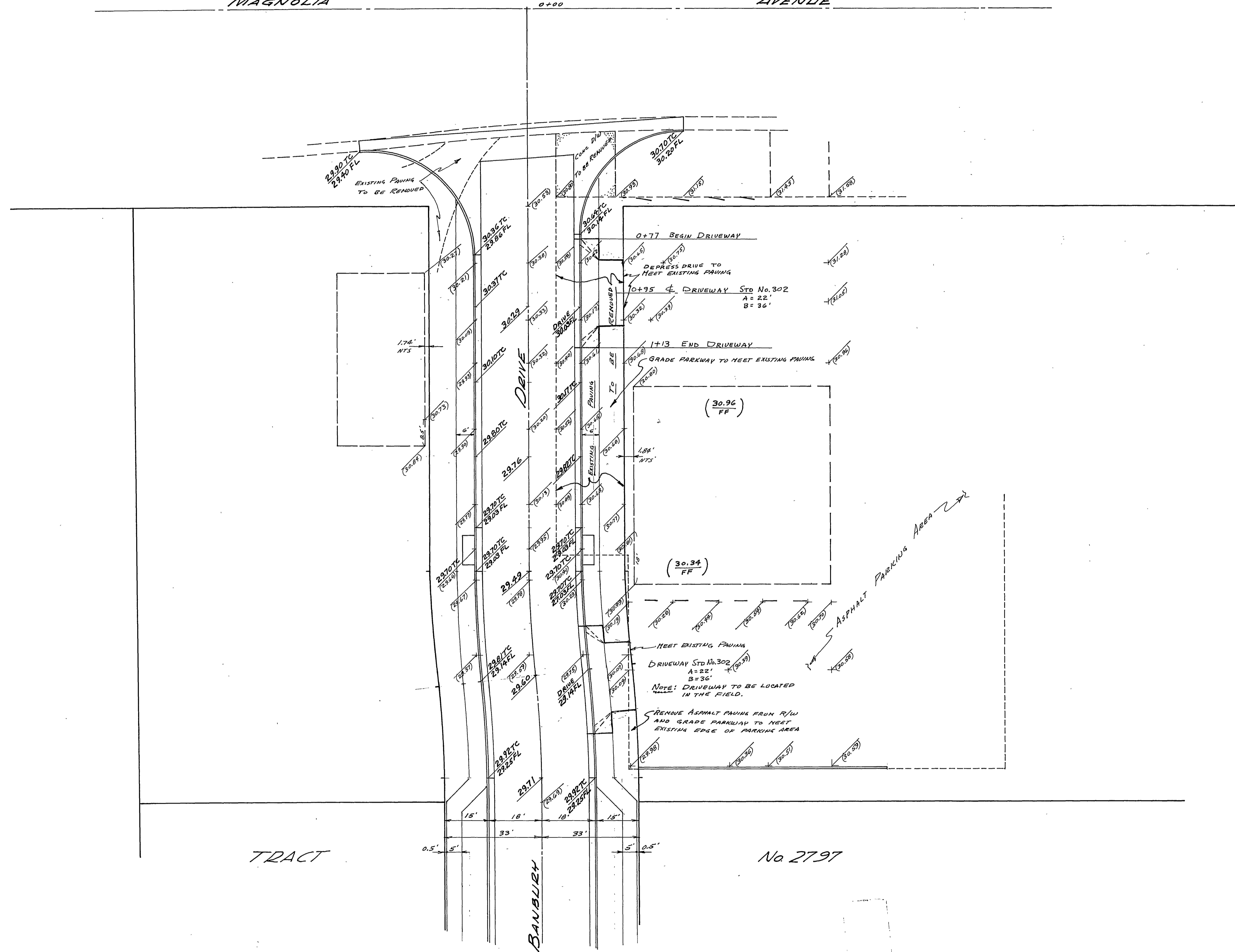
Dwg No. 63-300-A

DATE	
BY	

DATE	
BY	

MAGNOLIA

AVENUE



LEGEND

EXISTING GRADES SHOWN THIS (30.00)

EXISTING FINISH FLOOR SHOWN THIS (30.96 FF)

PROPOSED IMPROVEMENT GRADES SHOWN (29.70 TC, 29.73 FL)

TRACT

No 2797

INTERSECTION MAGNOLIA AVE & BANBURY DR.

SCALE: 1" = 20'

REVISIONS	DATE	BY

TRACT No 2797

SPECIAL TOPOGRAPHY

MAGNOLIA AVE & BANBURY DR.

SCALE As Shown	ALBERT A. WEBB ASSOCIATES	W.O. 63-300
DATE Jun 24	CIVIL ENGINEERS	SHEET 3
DRAWN AW	RIVERSIDE CALIFORNIA	OF 3 SHEETS
CHECKED	6-26-64	DWG. NO. R-875
F.B. 561		

W.D. [Signature] R-875

6-26-64 3 3

Dwg No. 63-300 A