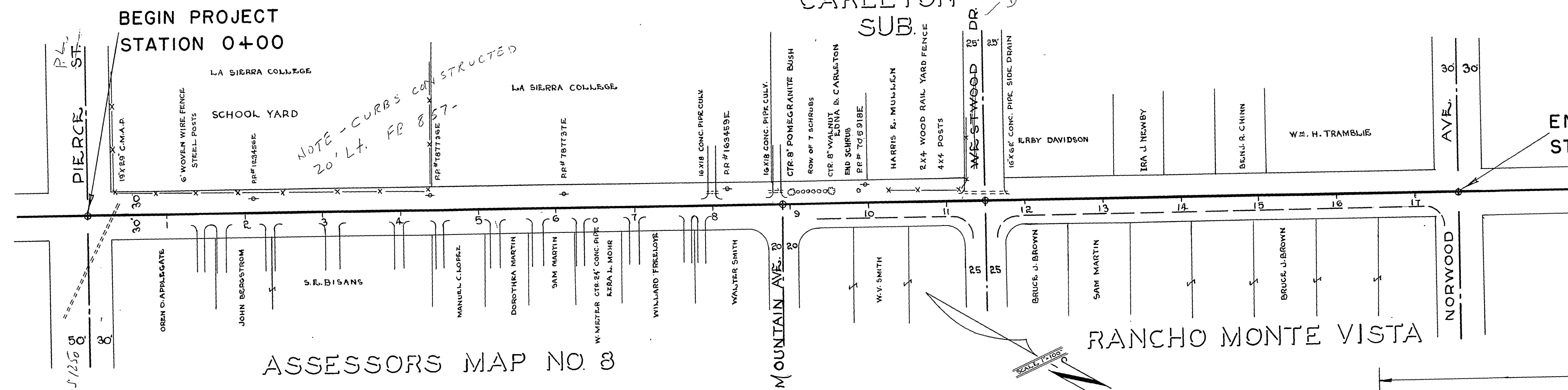


COLORED

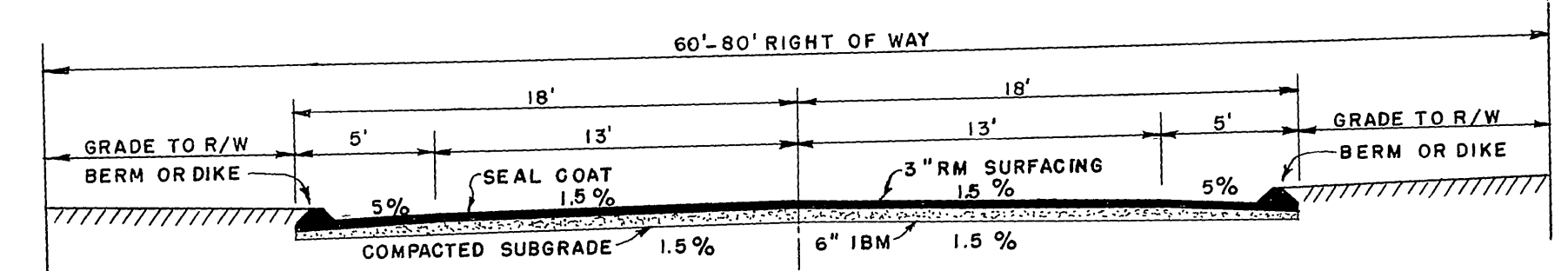
RINDGE ROAD

ROAD NO. 1375 WORK ORDER NO. 264
SURVEY NO. 2427 FIELD BOOK NO. 719

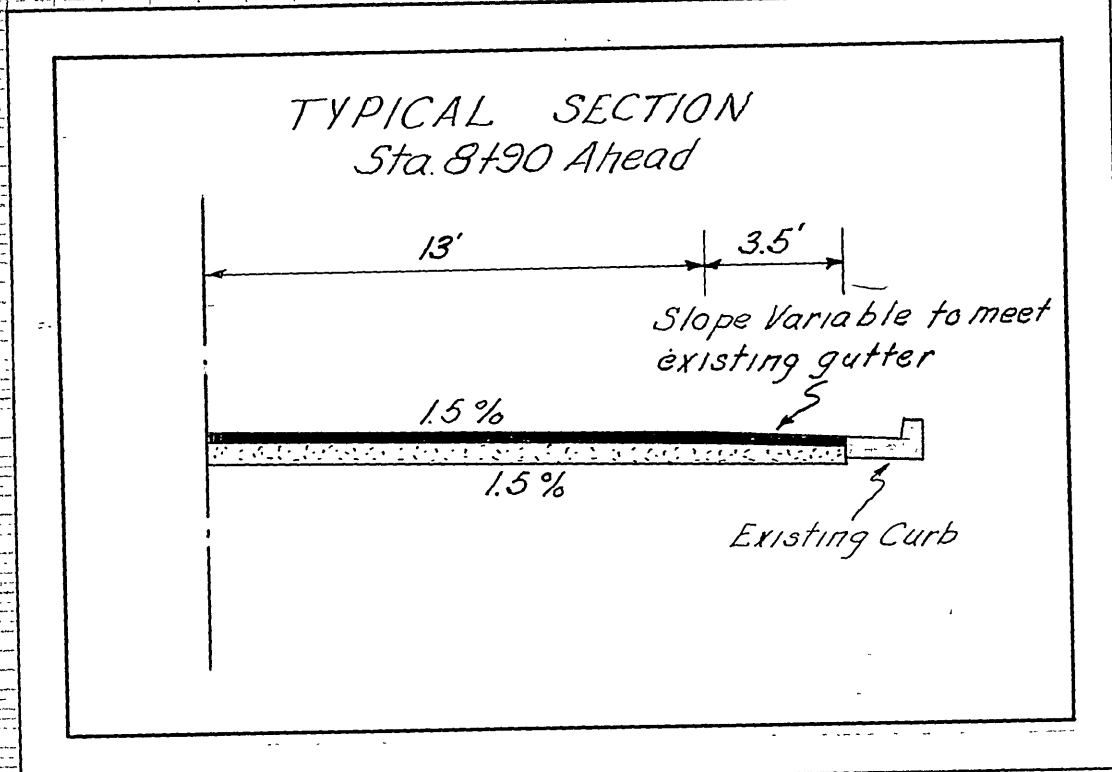
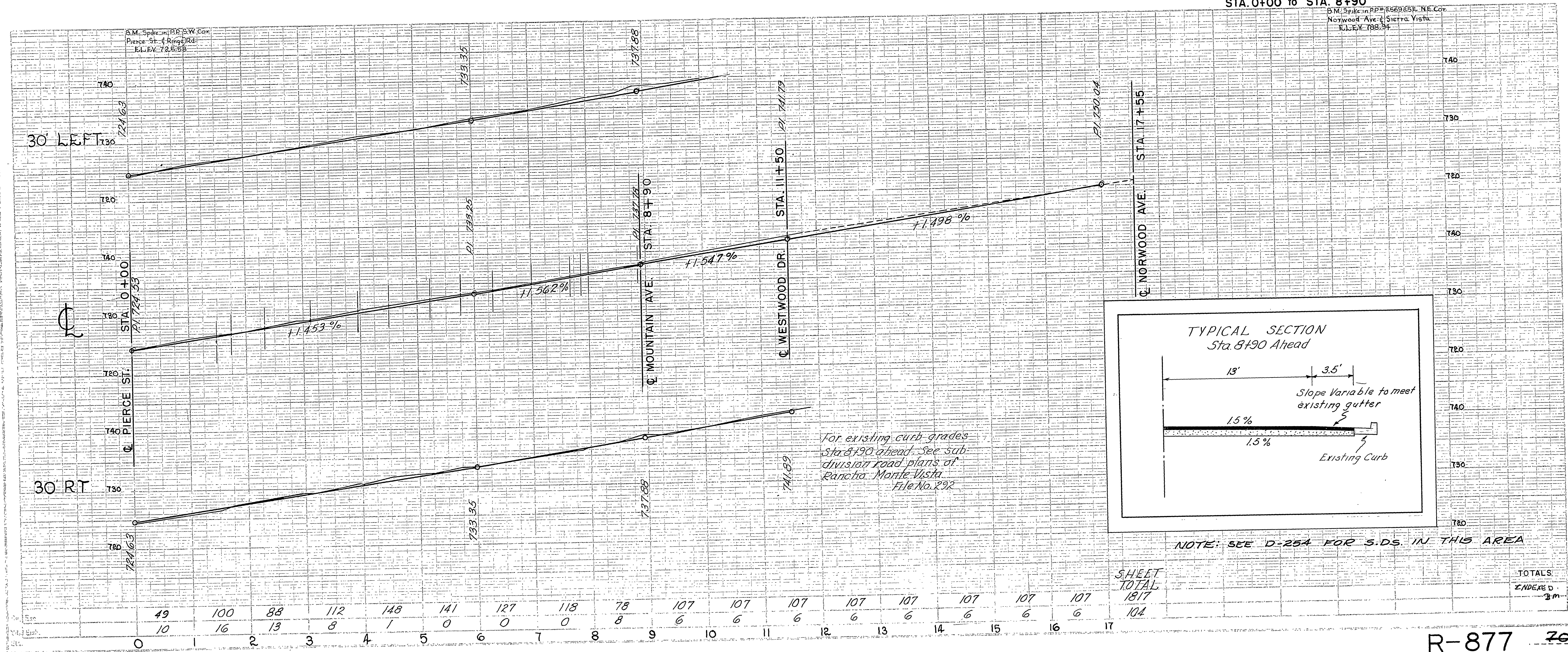
A.C. Keith, County Surveyor and Road Commissioner
Riverside County
October, 1954



ASSESSORS MAP NO. 8



TYPICAL SECTION
STA. 0+00 to STA. 8+90



NOTE: SEE D-254 FOR S.D.S. IN THIS AREA

SHEET TOTAL
1817

TOTALS
INDEXED
37

49	100	88	112	148	141	127	118	78	107	107	107	107	107	107	107	107	107	107	107
10	16	13	8	7	0	6	0	8	6	6	6	6	6	6	6	6	6	6	6