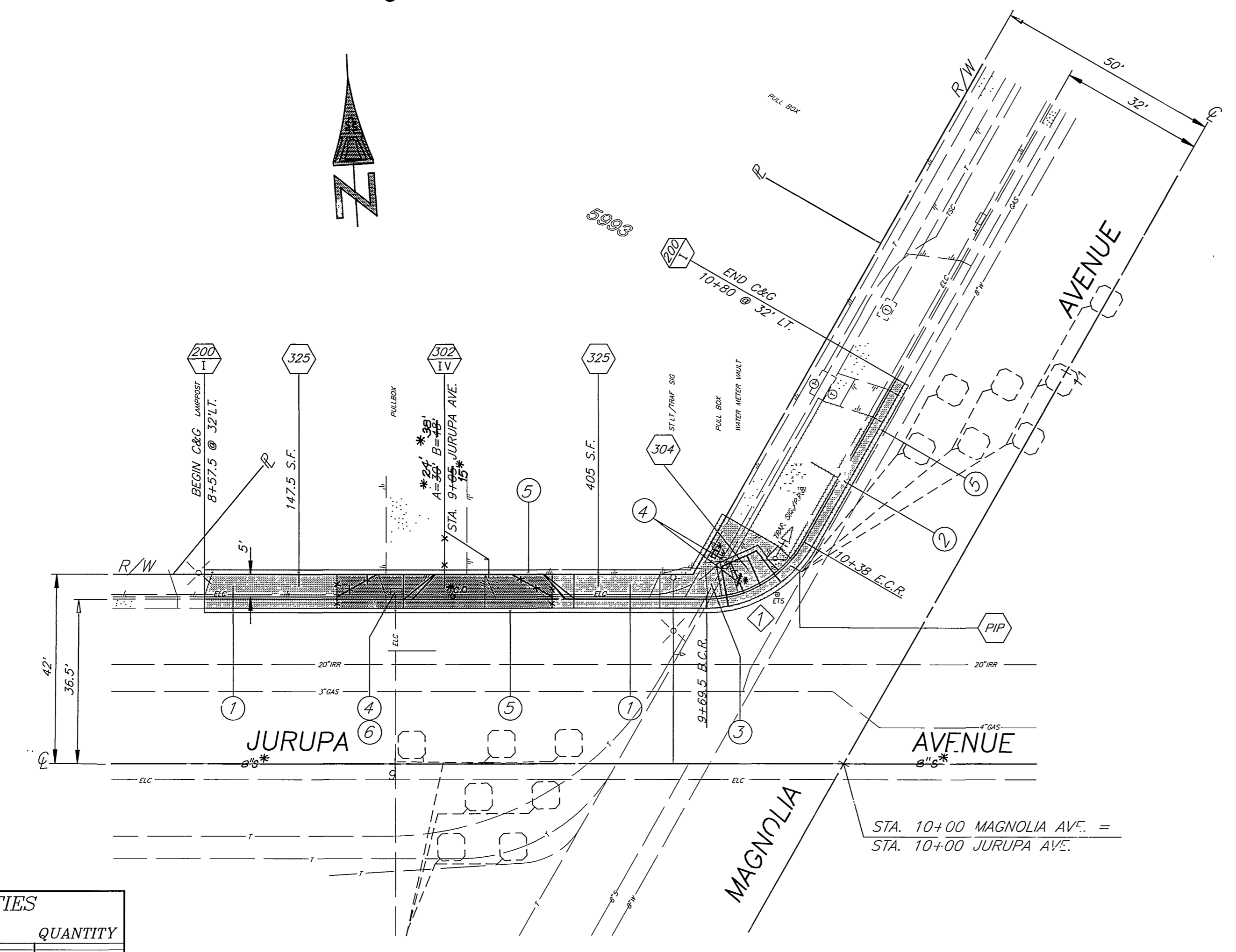


BENCHMARK:
 T.B.M. - TOP OF NEWLY TRAFFIC SIGNAL BOLT,
 SW CURB RETURN MAGNOLIA AVE. @ JURUPA AVE.
 ELEV.(ASSUMED) - 100.00 PER CRFB LL43/1-2

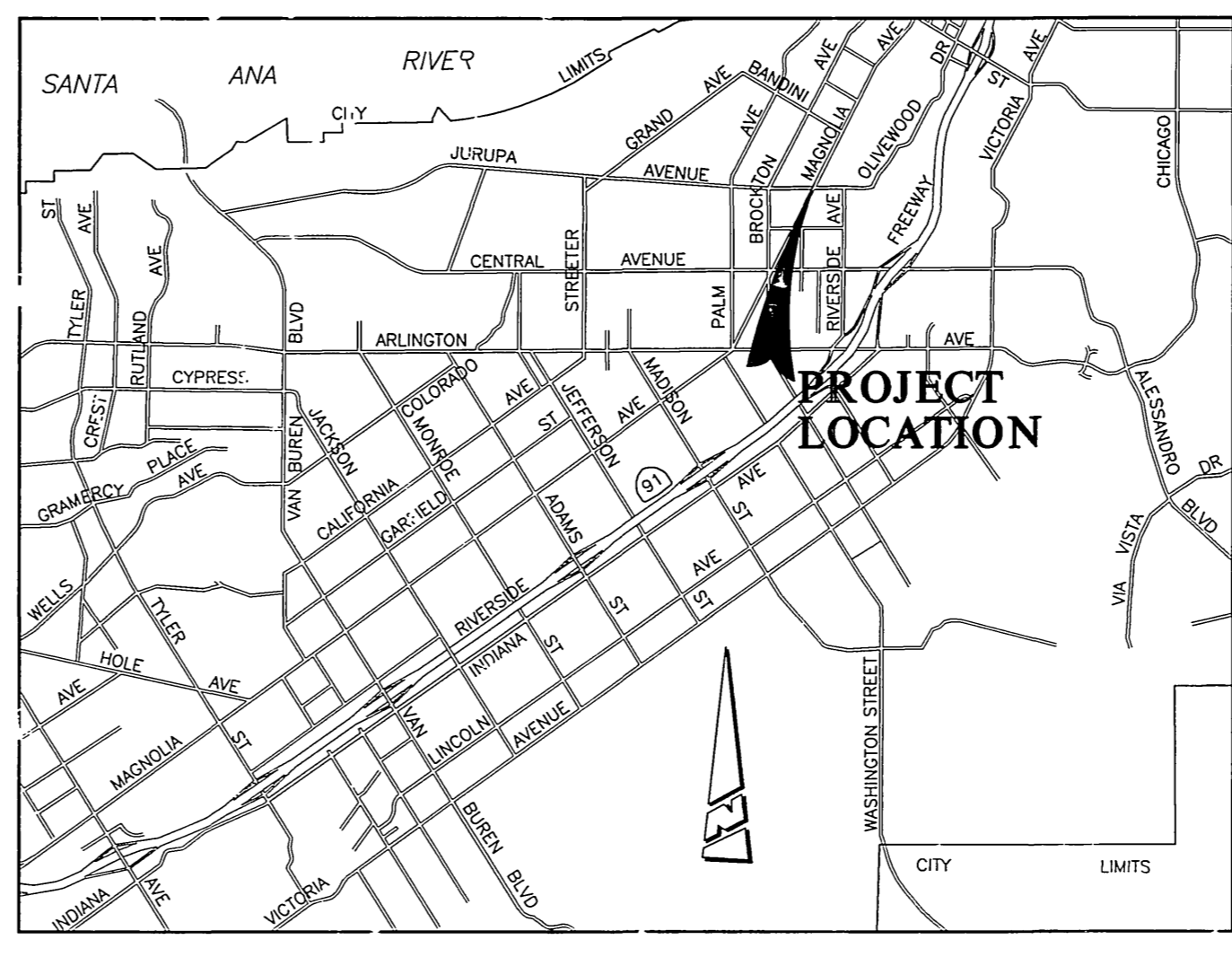


QUANTITIES	
ITEM	QUANTITY
UNCLASSIFIED FILL	12 C.Y.
C&G, Std.200 (6" C.F.)	185 L.F.
DWY APPROACH, Std.302	240 S.F.
P.C.C. SIDEWALK, Std.325	553 S.F.

CURVE DATA				
Station	R	L	T	
1	60'32'25"	25	26.42	14.59

IMPORTANT NOTICE
 Section 4216/4217 of the Government Code requires a Dig Alert identification "Notice" to be filed before a "Dig Alert" is called. Call toll free 1-800-422-4133 48 HOURS BEFORE YOU DIG UNDERGROUND SERVICE ALERT

ENGINEER IN RESPONSIBLE CHARGE
Ronald C. Mueller
 R.C.M. No. 29510 expires 3/31/99
 10-17-96



0 KM 1 KM 5 KM 10 KM
 0' 3,000' 6,000' 12,000' 24,000' 30,000' 36,000'
 SCALE: 1" = 6,000'

GENERAL CONSTRUCTION NOTES

- EXISTING UTILITIES SHOWN ON THIS PLAN ARE PLOTTED FROM UTILITY RECORDS. THE CONTRACTOR IS REQUIRED TO TAKE DUE PRECAUTIONARY MEASURES TO LOCATE AND PROTECT ALL UTILITIES WHETHER OR NOT SHOWN ON THIS PLAN. IF THE COVER OF A UTILITY IS KNOWN, IT IS SHOWN IN THE PROFILE. UTILITIES SHOWN IN THE PROFILE AS INDICATES THAT THE COVER IS UNKNOWN, BUT THE UTILITY IS NOT EXPECTED TO CONFLICT WITH THE PROPOSED IMPROVEMENTS.
- ALL ELEVATIONS SHOWN ON THE PLANS SHALL BE STAKED IN THE FIELD.
- PRIME CONTRACTORS BIDDING THIS WORK SHALL HAVE A CLASS A OR C-12 LICENSE.
- TRIM EDGE OF EXISTING PAVEMENT WHERE NEW PAVEMENT JOINS TO A SMOOTH STRAIGHT LINE.
- CONSTRUCTION SHALL BE IN ACCORDANCE WITH THE CITY OF RIVERSIDE STANDARD DRAWINGS AND STANDARD SPECIFICATION FOR PUBLIC WORKS CONSTRUCTION, 1992 EDITION.
- ALL PERMANENT PAVEMENT DELINEATION WILL BE PERFORMED BY CITY FORCES.

SPECIFIC CONSTRUCTION NOTES

- NUMBERS ABOVE 100 IN A HEXAGON ON THE PLAN REFER TO THE RESPECTIVE STANDARD DRAWING AND SHALL BE CONSTRUCTED ACCORDINGLY. UNLESS MODIFICATIONS ARE NOTED ON THE PLAN OR COVER SHEET, ANY NUMBER SHOWN BELOW THE STANDARD DRAWING NUMBER INDICATES THE SPECIFIC ALTERNATE TO BE CONSTRUCTED.
- PIP PROTECT IN PLACE EXISTING TRAFFIC SIGNAL DETECTOR LOOPS AND STUB.
- 304 CONSTRUCT WHEELCHAIR RAMP PER CITY STD. NO. 304 AND ADJUST TRAFFIC SIGNAL PULL BOX TO ACCOMMODATE WHEELCHAIR RAMP.

CONSTRUCTION NOTES

- REMOVE EXISTING DRIVEWAY APPROACH, BACKFILL WITH CLEAN DIRT, AND CONSTRUCT 5" P.C.C. SIDEWALK.
- REMOVE EXISTING DRIVEWAY APPROACH AND BACKFILL WITH CLEAN DIRT.
- REMOVE EXISTING WHEELCHAIR RAMP AND CONSTRUCT NEW WHEELCHAIR RAMP.
- WATER METER VAULTS, TRAFFIC SIGNAL PULL BOXES, STREET LIGHTING PULL BOXES AFFECTED BY CONSTRUCTION SHALL BE ADJUSTED TO GRADE.
- 1' WIDE X 0.5' DEEP A.C. PAVEMENT MATCHUP WITH EXISTING A.C. PAVEMENT.
- REPLACE EXISTING PULL BOX LID WITH LOAD BEARING LID.

CITY OF RIVERSIDE, CALIFORNIA
 PUBLIC WORKS DEPARTMENT

IMPROVEMENTS
 @ 5993 MAGNOLIA AVE.
 NW CORNER MAGNOLIA AVE. & JURUPA AVE.

AS BUILT @ 10/27/96
 ACCT. NO. 430-541500-440301-30056-001
R-886A
 SHEET 1 OF 1