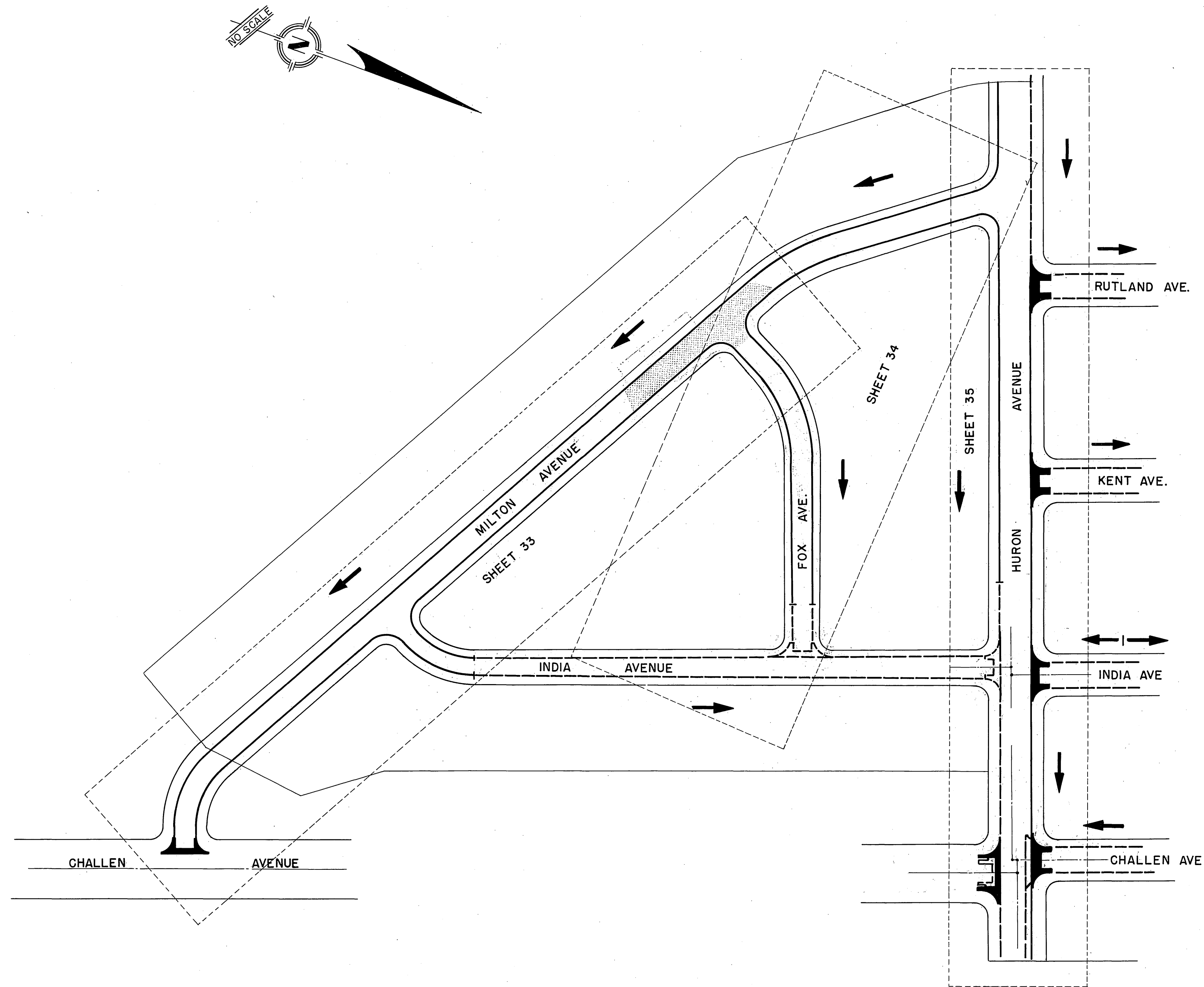


APPROVED *Oct 1, 1956*  
*A.C. Keith*  
A.C. KEITH, COUNTY SURVEYOR & ROAD COMM.  
R.E. 4398

# DRAINAGE PLAN ARLANZA-SIERRA FOOTHILL SECTION



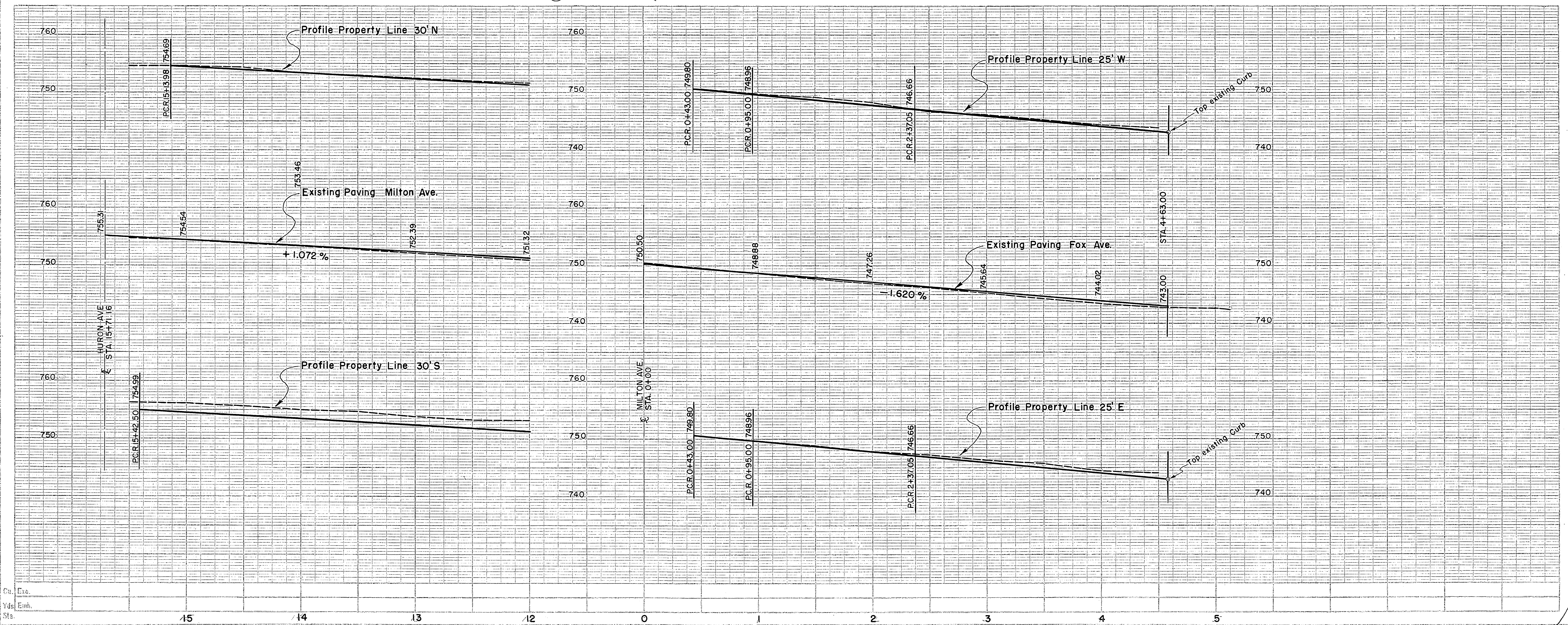
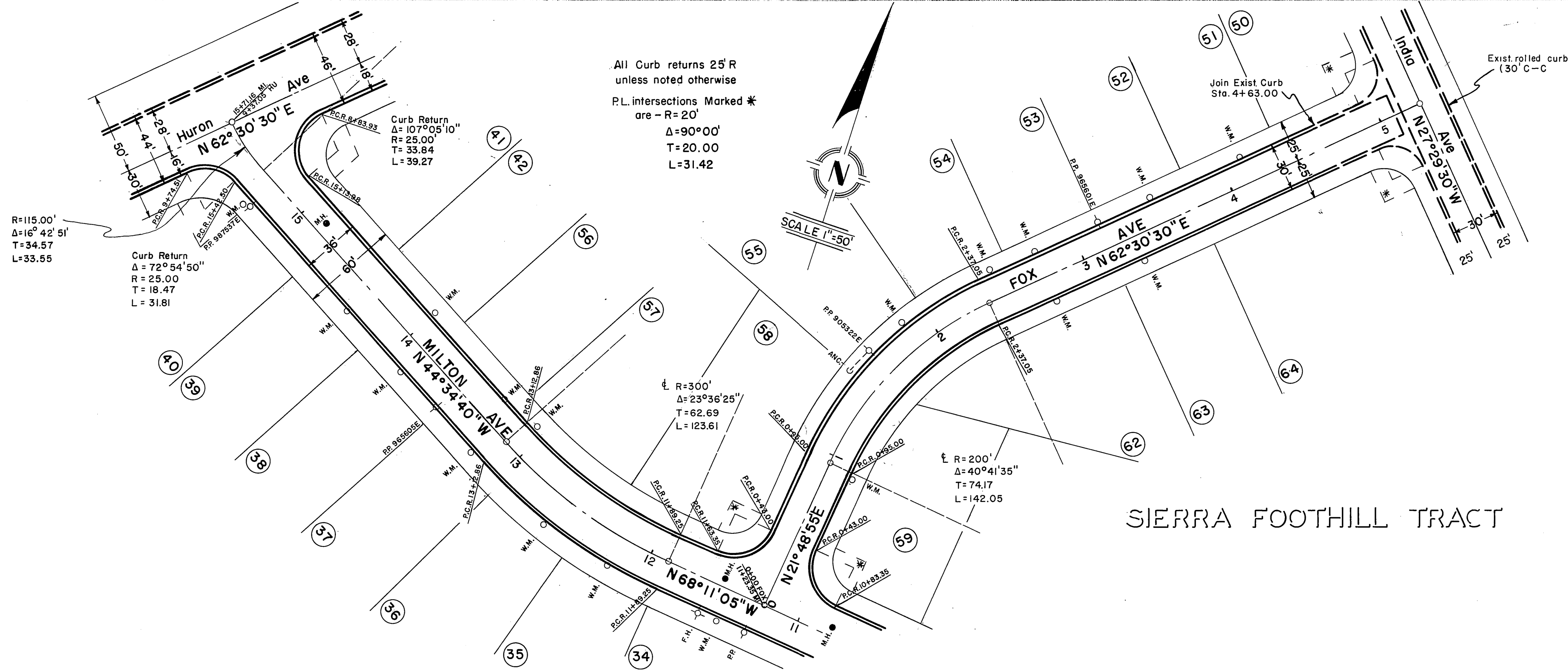
708-7





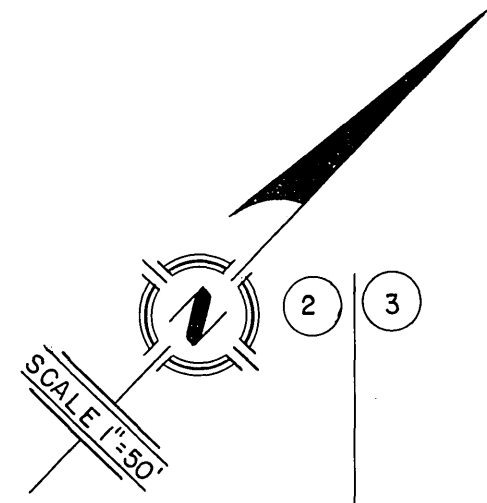


STREET PLANS & PROFILE  
OF  
MILTON AVE & FOX AVE  
1956

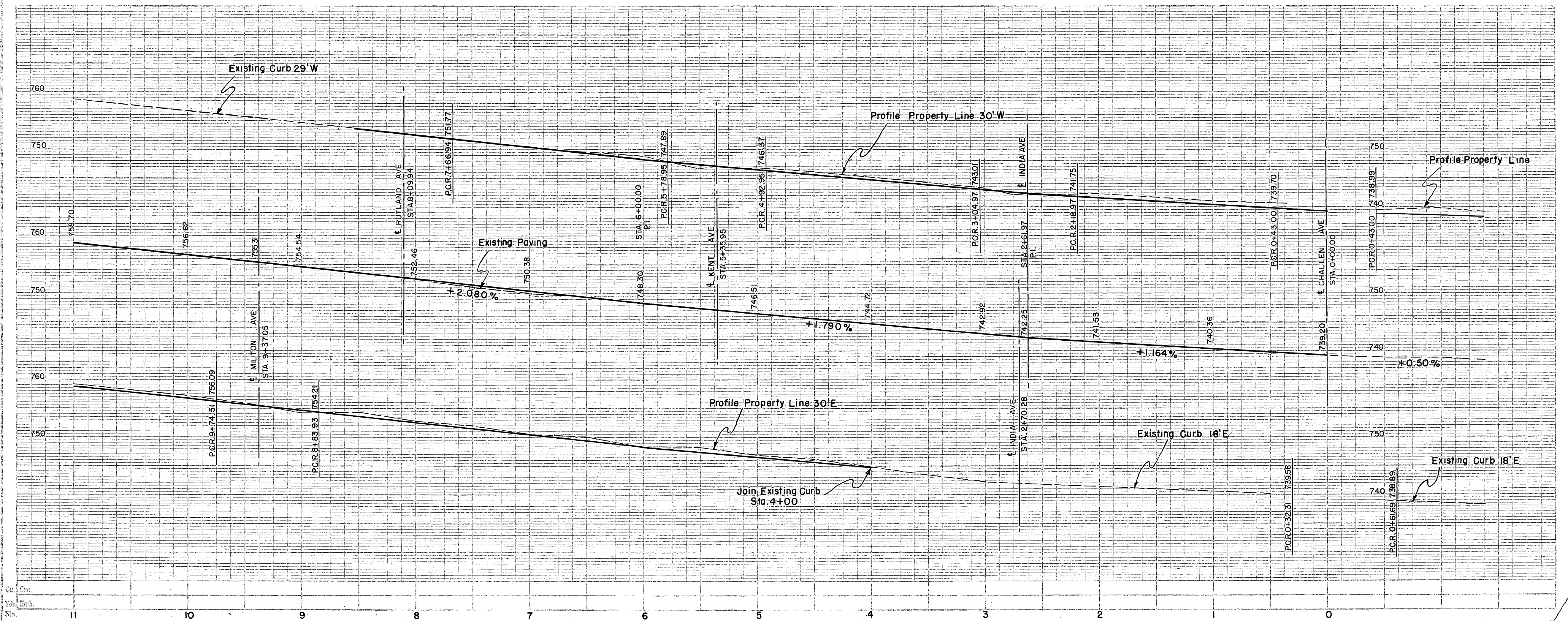
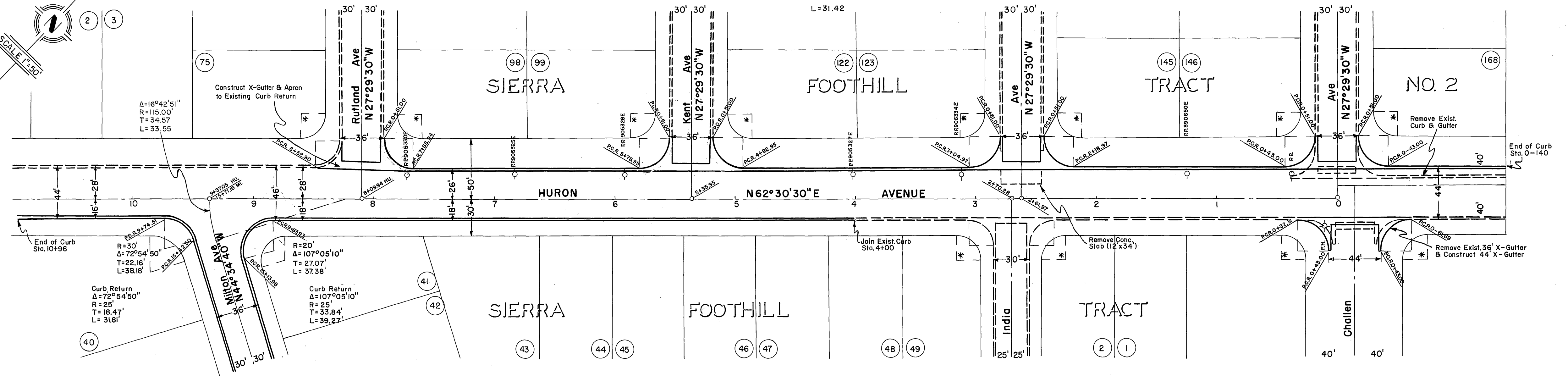




**STREET PLANS & PROFILE OF  
HURON AVENUE  
1956**



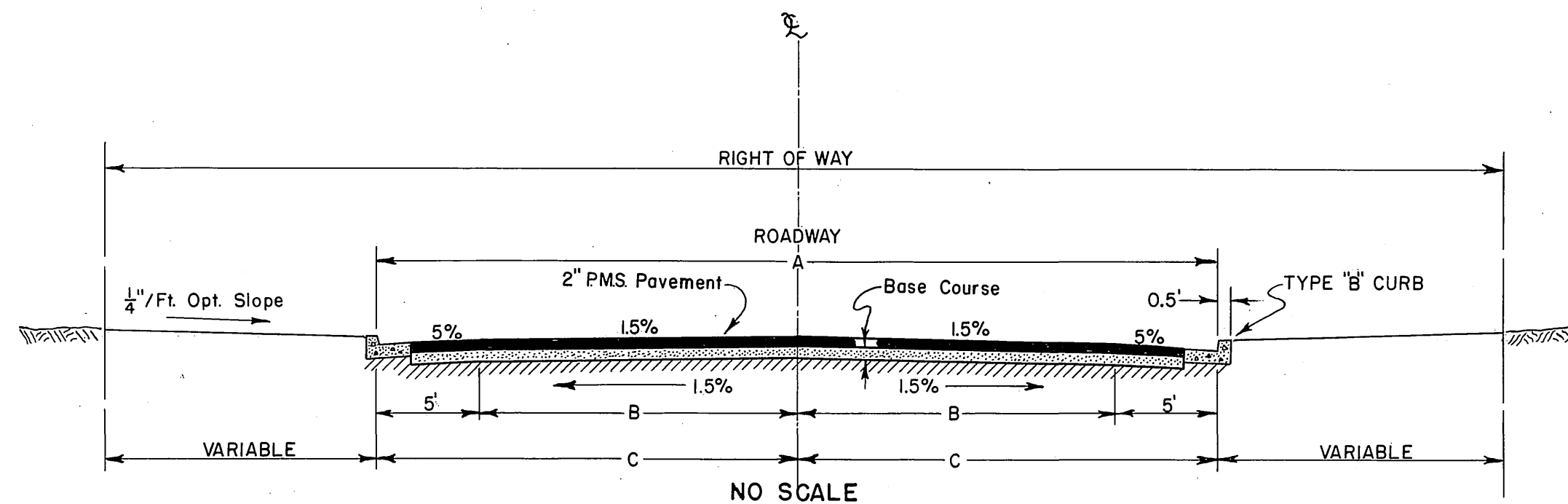
All Curb returns 25' R  
unless noted otherwise  
R.L. intersections Marked\*  
are - R=20'  
Δ=90°00'  
T=20.00  
L=31.42



R-912



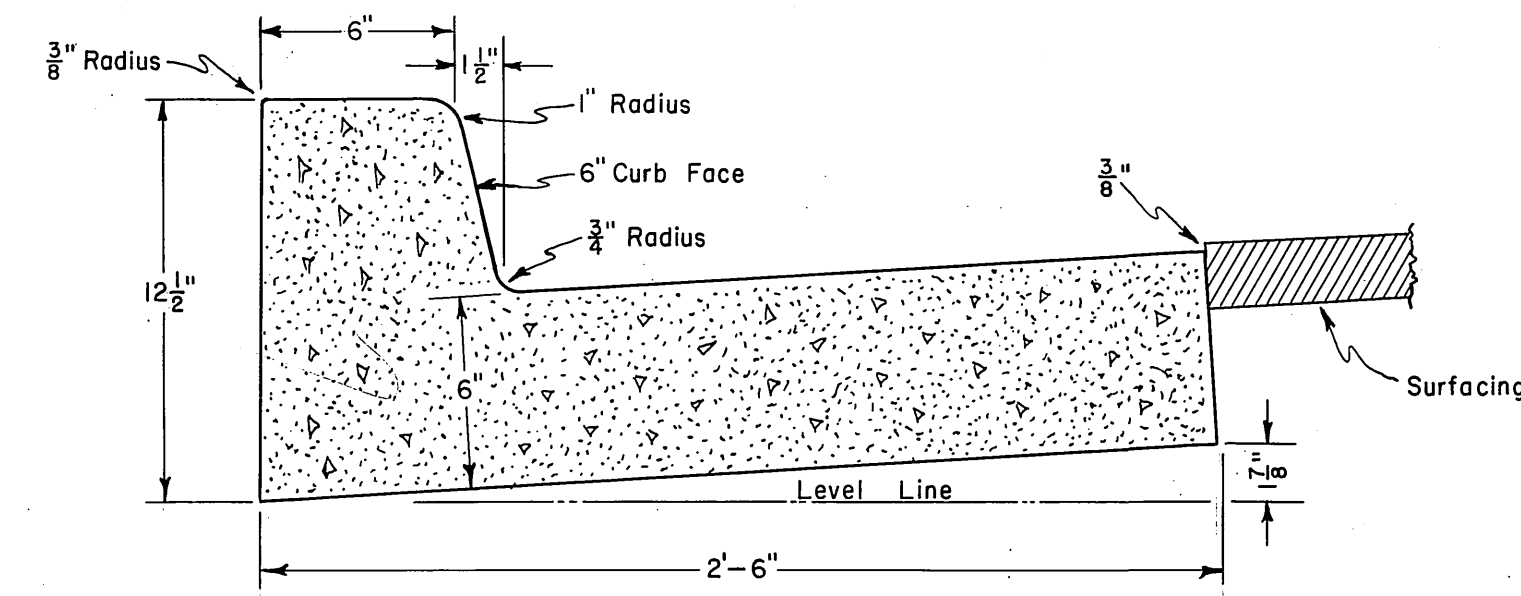
APPROVED *Oct 1, 1956*  
*A.C. Keith*  
 A.C. KEITH, COUNTY SURVEYOR & ROAD COMM.  
 R.E. 4368



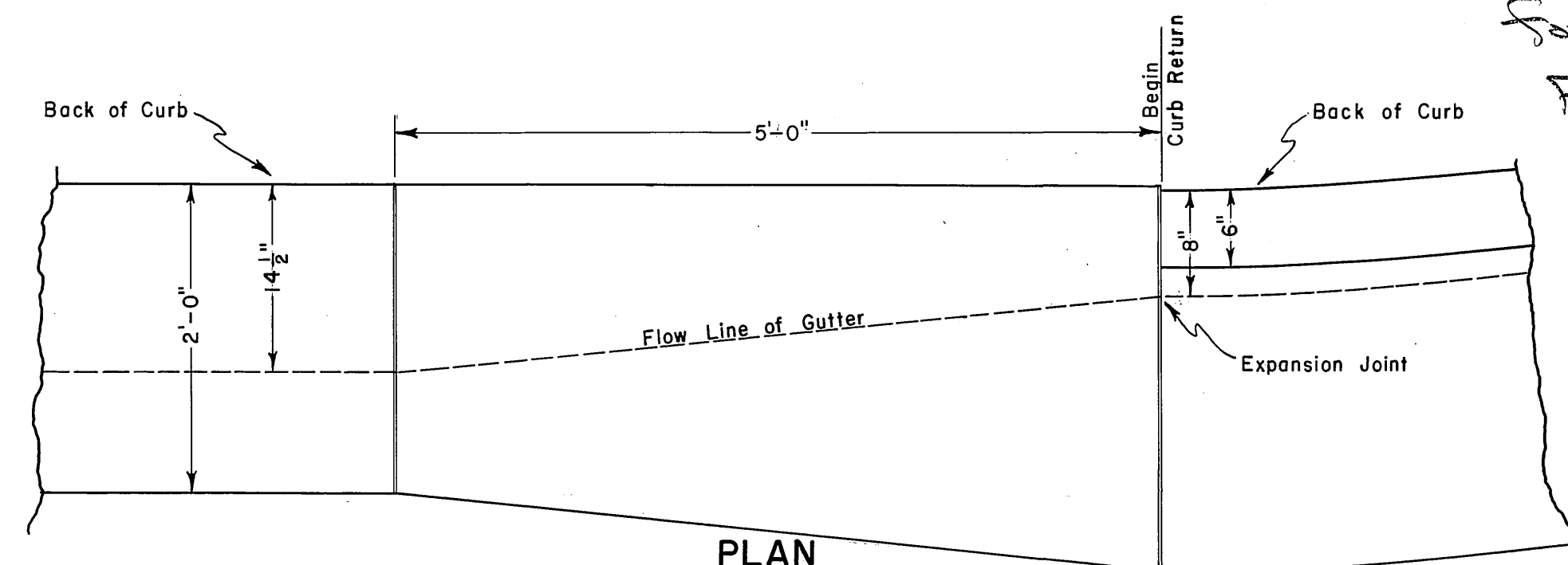
A	30'	32'	36'	40'	44'
B	10'	11'	13'	15'	17'
C	15'	16'	18'	20'	22'

NAME		LIMITS		WIDTH	BASE
BABB AVE.	CREST	TO	PHILBIN	36'	4"
BEAU AVE.	CREST	TO	CHAPEL	32'	4"
BEE JAY ST.	CYPRESS	TO	BABB	32'	4"
CHALLENGE ST.	PHILBIN	TO	CYPRESS	36'	8"
CHAPEL ST.	WEST TREY	TO	BEAU	32'	4"
CROWELL ST.	PHILBIN	TO	CYPRESS	36'	8"
CROWELL ST.	CYPRESS	TO	END	32'	
CYPRESS AVE.	CREST	TO	VAN BUREN	44'	*
EAST TREY AVE.	WARREN	TO	CROWELL	36'	8"
CHALLENGE ST.	CYPRESS	TO	END	32'	
JANET AVE.	CHALLENGE	TO	PICKER	32'	8"
JANET AVE.	WARREN	TO	CROWELL	32'	8"
PICKER ST.	CYPRESS	TO	END	32'	
NOBLE ST.	PHILBIN	TO	WEST TREY	36'	4"
NOBLE ST.	WEST TREY	TO	CYPRESS	32'	
PHILBIN AVE.	BABB	TO	VAN BUREN	40'	*
PICKER ST.	PHILBIN	TO		36'	8"
RUTLAND AVE.	PHILBIN	TO	ARLINGTON	40'	4"
TREY AVE.	CHALLENGE	TO	PICKER	36'	8"
WARREN ST.	PHILBIN	TO	CYPRESS	36'	8"
WEST TREY AVE.	BABB	TO	RUTLAND	32'	4"

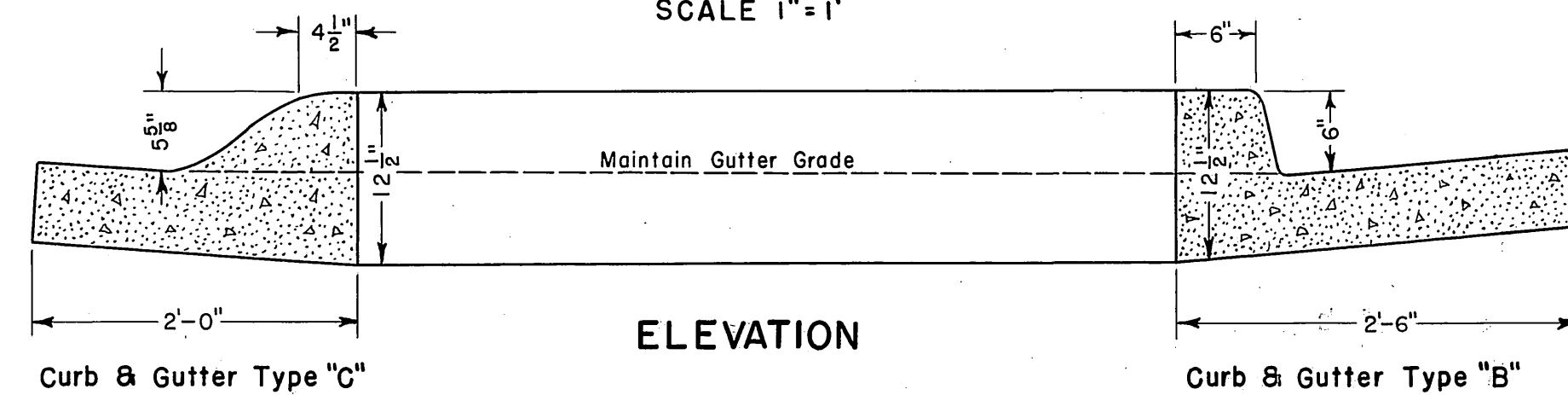
\* CHALLENGE ST. WEST = 4"  
 \* CHALLENGE ST. EAST = 8"



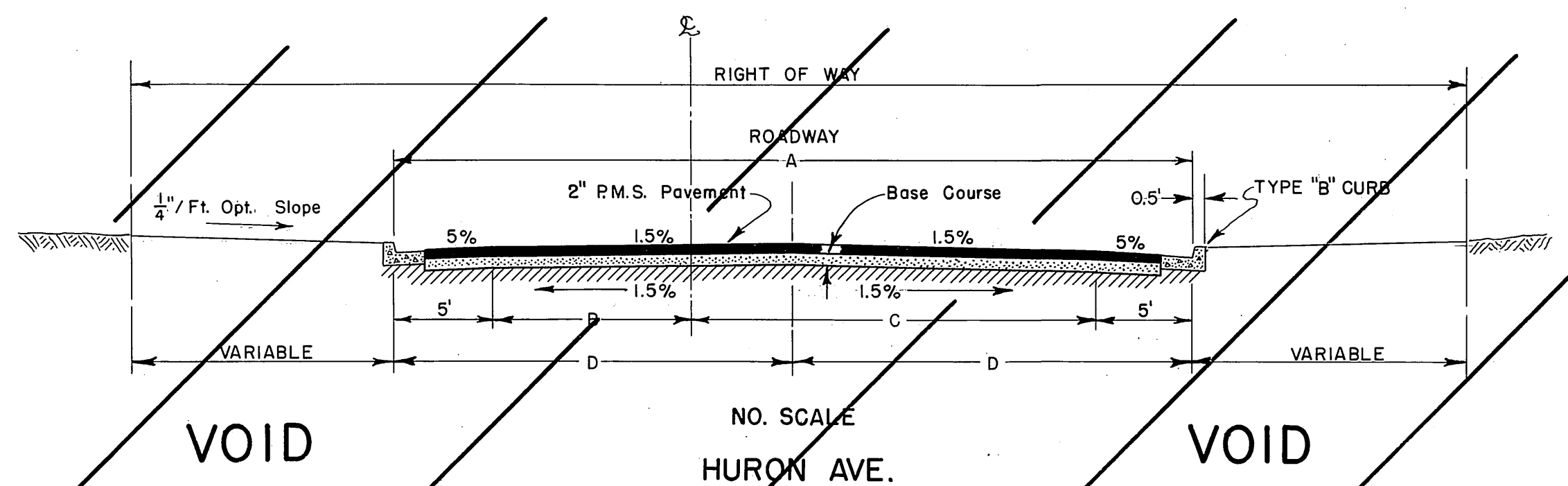
TYPE "B" CURB  
 SCALE 1"=6'



PLAN  
 SCALE 1"=1'



ELEVATION



VOID

VOID

HURON AVE.

CHALLENGE to RUTLAND	
A	44'
B	18'
C	26'
D	22'

See Plan Sheet No.

RUTLAND to MILTON	
A	46'
B	18'
C	28'
D	23'

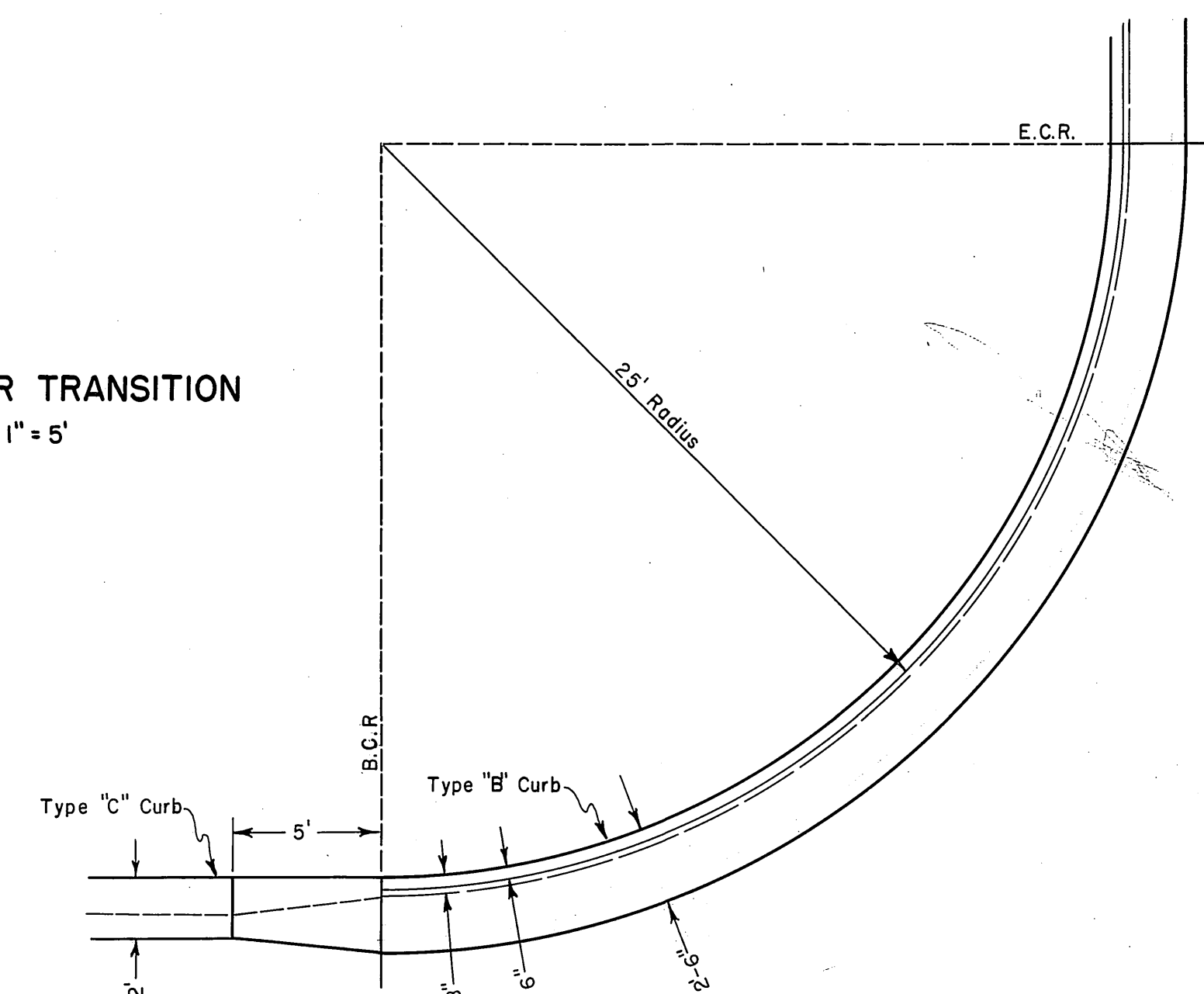
See Plan Sheet No.

MILTON to WEST End	
A	44'
B	16'
C	28'
D	22'

See Plan Sheet No.

GRADING & PAVING NOT A PART OF THIS CONTRACT

CURB & GUTTER TRANSITION  
 SCALE 1"=5'



This is an extra detail sheet for portion in foothills #3 not included in final boundary