

# ROSE AVENUE

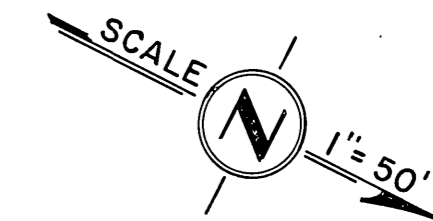
BETWEEN

PIERCE PLACE and MOUNTAIN AVE.

ROAD NO. 1383  
SURVEY NO. 3022

WORK ORDER NO. 805  
FIELD BOOK NO. 105

A.C. KEITH COUNTY SURVEYOR AND ROAD COMMISSIONER  
RIVERSIDE COUNTY



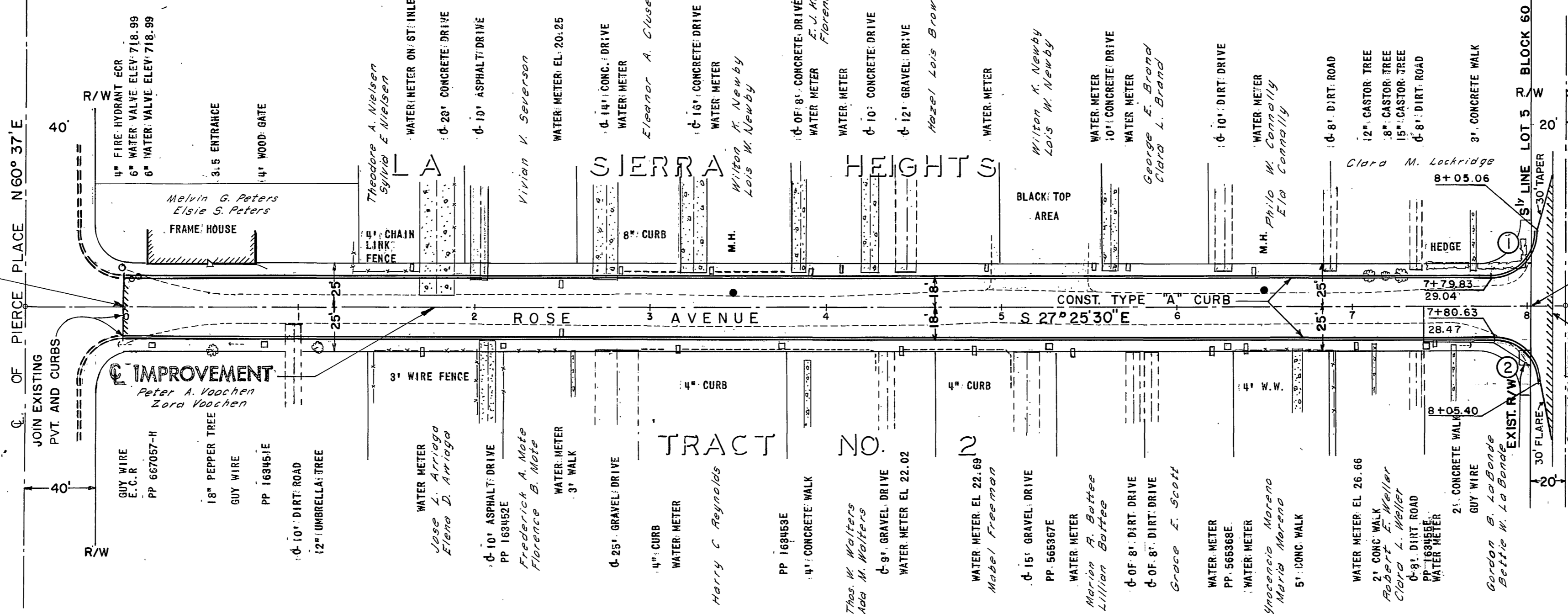
### CURB RETURN DATA

① Δ = 90° 32'  
R = 25'  
T = 25.23  
L = 39.50  
BC = 7+79.83

② Δ = 89° 28'  
R = 25'  
T = 24.77  
L = 39.04  
BC = 7+80.63

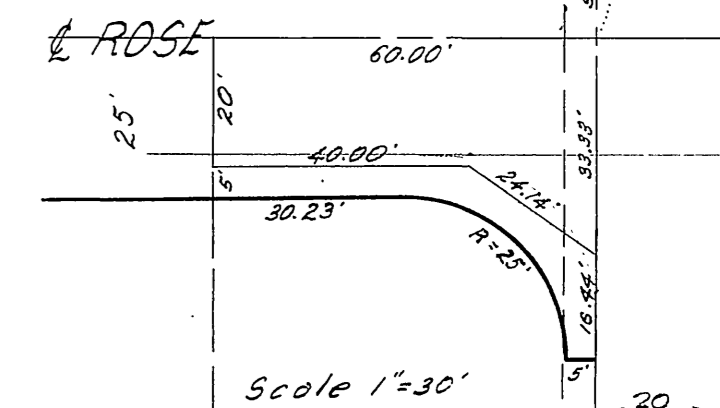
STA. 0+00  
BEGIN PROJECT

NOTE: SEE D-254 FOR S.D. ON PIERCE PL.

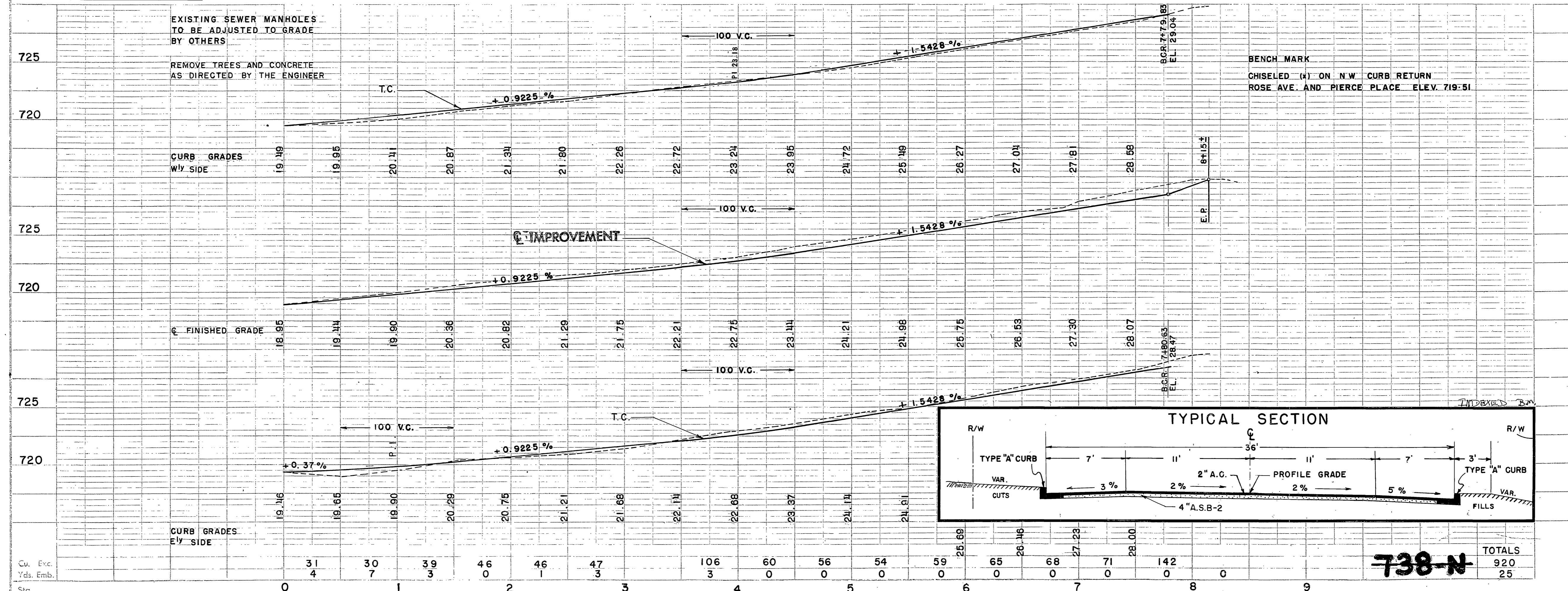


STA. 8+01.23  
MEET EXISTING PAVEMENT ON MOUNTAIN AVE.

STA. 8+21.23  
STA. 8+15 E.P. MOUNTAIN AVE. END PROJECT JOIN EXISTING PVT.



CONTRACT NO. 1383A-62



**738-N**