

TRACT

TRACT - 2880

MARK	DATE	DESCRIPTION
	3/17/65	MINOR REVISIONS TO CONFORM TO STATE STANDARDS. <i>See R-608</i>

J. F. DAVIDSON-CIVIL ENGINEER
 R.E. No. 802
 RIVERSIDE, CALIFORNIA
 APPROVED BY *George E. Miller* DATE 11/16/64
 R.E. 10688
CITY OF RIVERSIDE, CALIFORNIA
 DEPARTMENT OF PUBLIC WORKS
 S.S. PROJECT NO. 132
CHICAGO AVE. EXTENSION NO. 2
 RANSOM RD. TO LE CONTE DR.
 STA. 75+15 TO STA. 77+82.13

DESIGNED BY _____ CHECKED BY *DCH*
 DRAWN BY: BOB B. DATE 12/15/64
 RECOMMENDED BY *A.P. Thal* ASSISTANT CITY ENGINEER

APPROVED BY *Director of Public Works*
 DATE 12-15-64

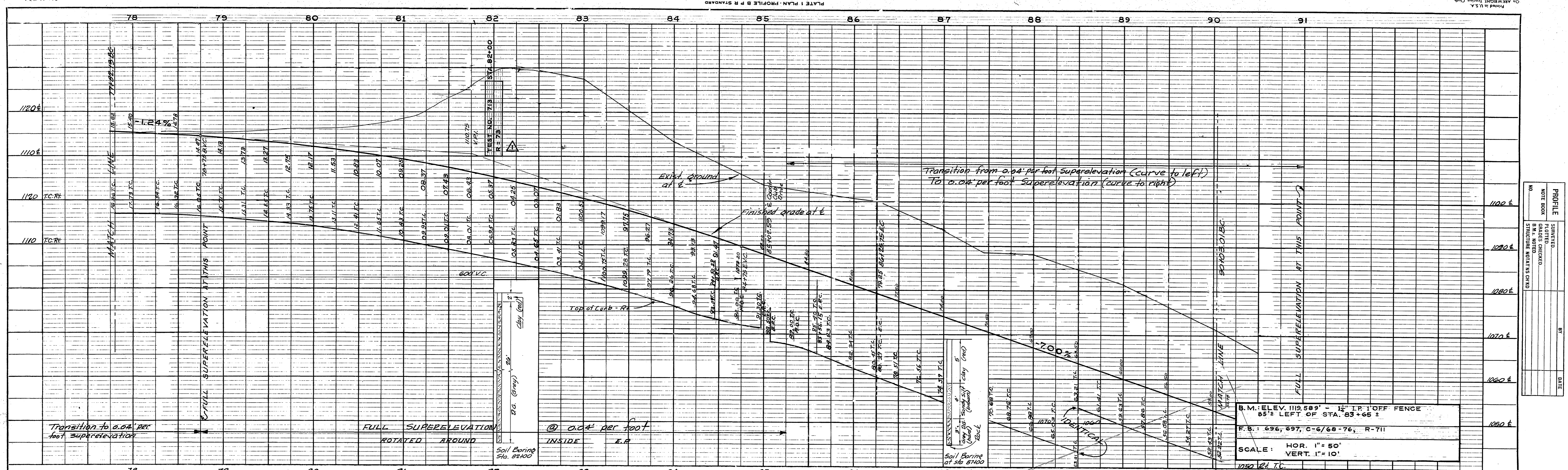
PROJ. NO. 3069
R-915
 SHEET 1 OF 9

PROFILE

DATE	
BY	
CHECKED	
DESIGNED	
DRAWN	
NO.	

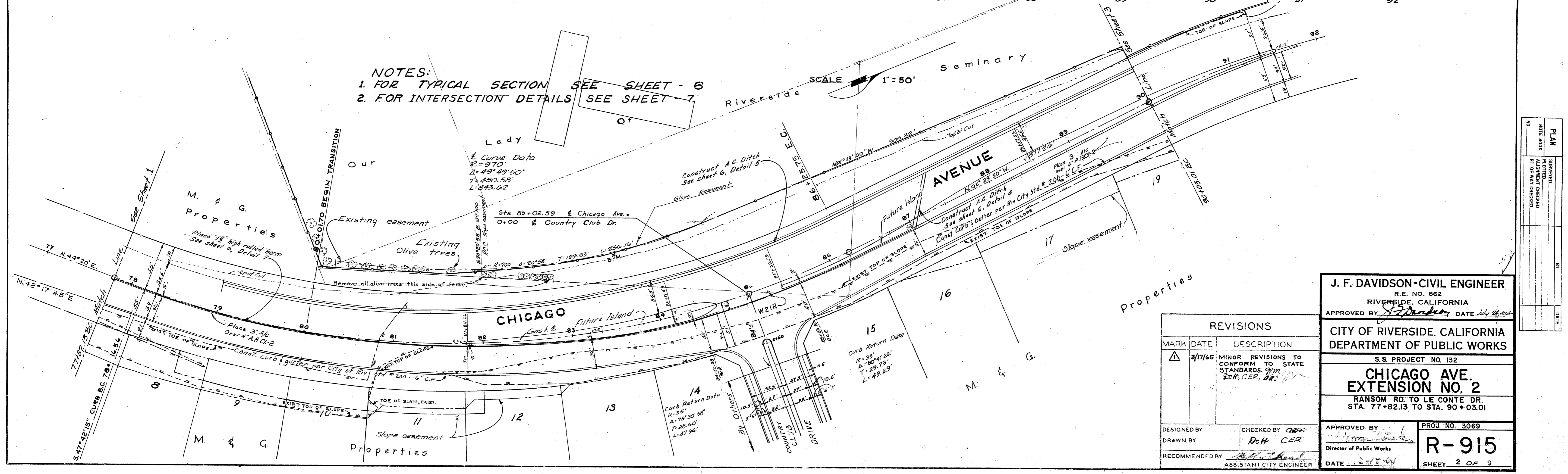
PLAN

DATE	
BY	
CHECKED	
DESIGNED	
DRAWN	
NO.	



B.M.: ELEV. 1119.589' - 1 1/2" I.P. OFF FENCE
85' ± LEFT OF STA. 83+65 ±
F.B.: 696, 697, C-6/68-76, R-711
SCALE: HOR. 1" = 50'
VERT. 1" = 10'

NOTES:
1. FOR TYPICAL SECTION SEE SHEET - 6
2. FOR INTERSECTION DETAILS SEE SHEET - 7



J. F. DAVIDSON-CIVIL ENGINEER
R.E. NO. 862
RIVERSIDE, CALIFORNIA
APPROVED BY *J. Davidson* DATE July 24, 1965

CITY OF RIVERSIDE, CALIFORNIA
DEPARTMENT OF PUBLIC WORKS

S.S. PROJECT NO. 132
**CHICAGO AVE.
EXTENSION NO. 2**
RANSOM RD. TO LE CONTE DR.
STA. 77+82.13 TO STA. 90+03.01

MARK	DATE	DESCRIPTION
△	3/17/65	MINOR REVISIONS TO CONFORM TO STATE STANDARDS. JFM 204, CER, 283

DESIGNED BY
DRAWN BY
RECOMMENDED BY

CHECKED BY
DCH CER

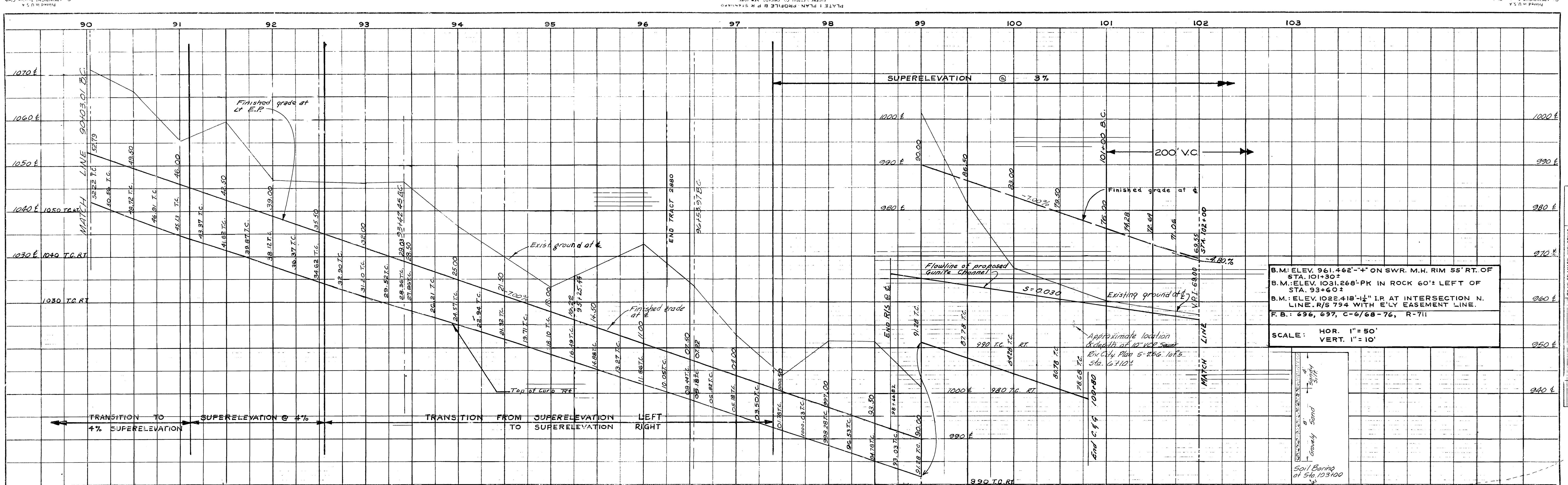
APPROVED BY
Director of Public Works

DATE 12-15-64

PROJ. NO. 3069
R-915
SHEET 2 OF 9

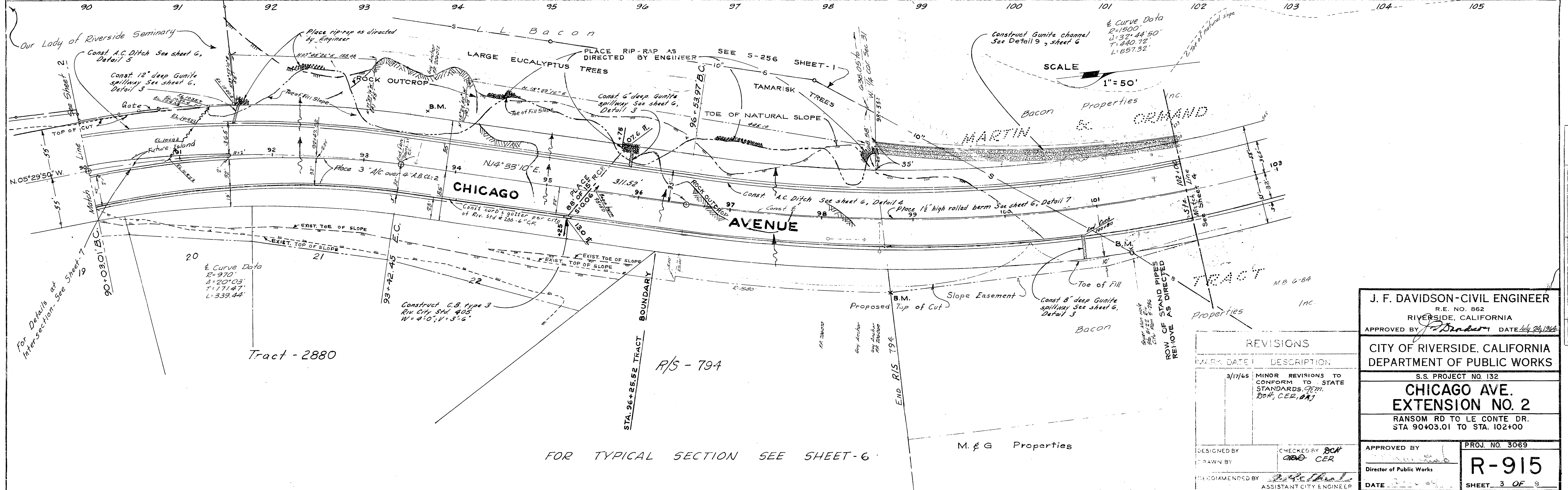
PROFILE	SURVEYED	BY	DATE
NOTE BOOK	GRADES CHECKED		
NO.	STRUCTURE NO. AT THIS POINT		

PLAN	SURVEYED	BY	DATE
NOTE BOOK	ALIGNMENT CHECKED		
NO.	RT. OR WAY CHECKED		



B.M.: ELEV. 961.462' "I" ON SWR. M.H. RIM 55' RT. OF STA. 101+30'
 B.M.: ELEV. 1031.268'-PK IN ROCK 60' LEFT OF STA. 93+60'
 B.M.: ELEV. 1022.418'-I.P. AT INTERSECTION N. LINE R/S 794 WITH E'LY EASEMENT LINE.
 F.B.: 696, 697, C-6/68-76, R-711
 SCALE: HOR. 1" = 50'
 VERT. 1" = 10'

PROFILE	
NOTE BOOK	PLOTTED
BRN. MO. ENCL.	GRADES CHECKED
STATIONING	VERT. DATA CHECKED
DATE	



REVISIONS		
MARK	DATE	DESCRIPTION
	3/17/65	MINOR REVISIONS TO CONFORM TO STATE STANDARDS, 97M. BOA, CER, AMJ

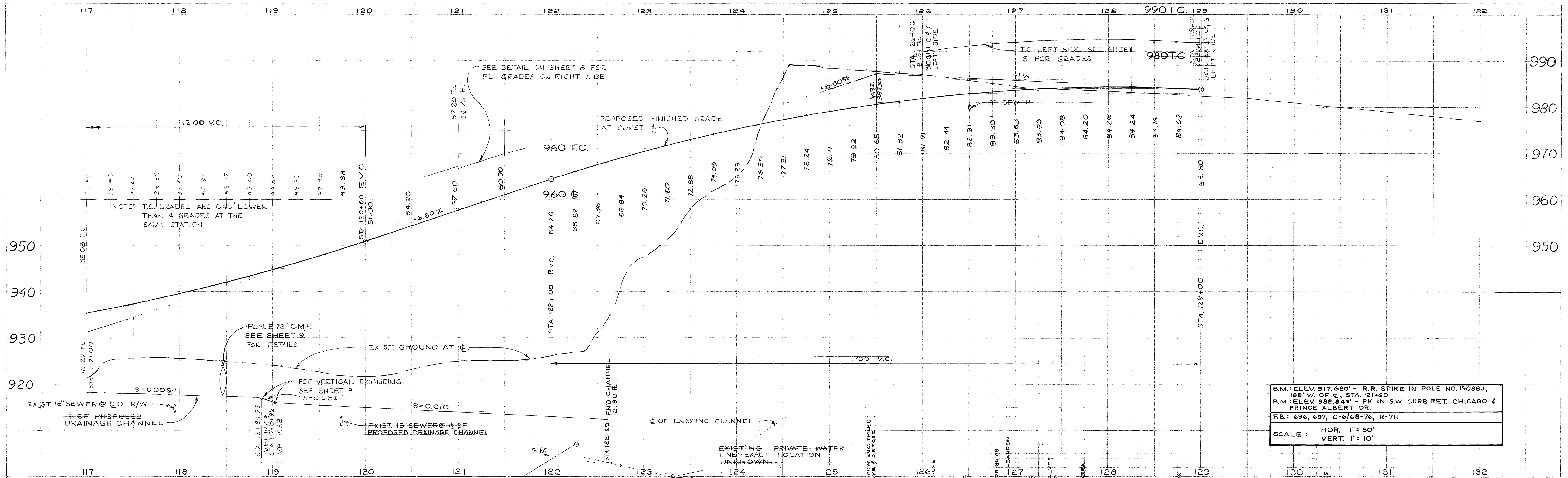
J. F. DAVIDSON-CIVIL ENGINEER
 R.E. NO. 862
 RIVERSIDE, CALIFORNIA
 APPROVED BY *J. Davidson* DATE July 24, 1964

CITY OF RIVERSIDE, CALIFORNIA
 DEPARTMENT OF PUBLIC WORKS
 S.S. PROJECT NO. 132
CHICAGO AVE. EXTENSION NO. 2
 RANSOM RD TO LE CONTE DR.
 STA 90+03.01 TO STA. 102+00

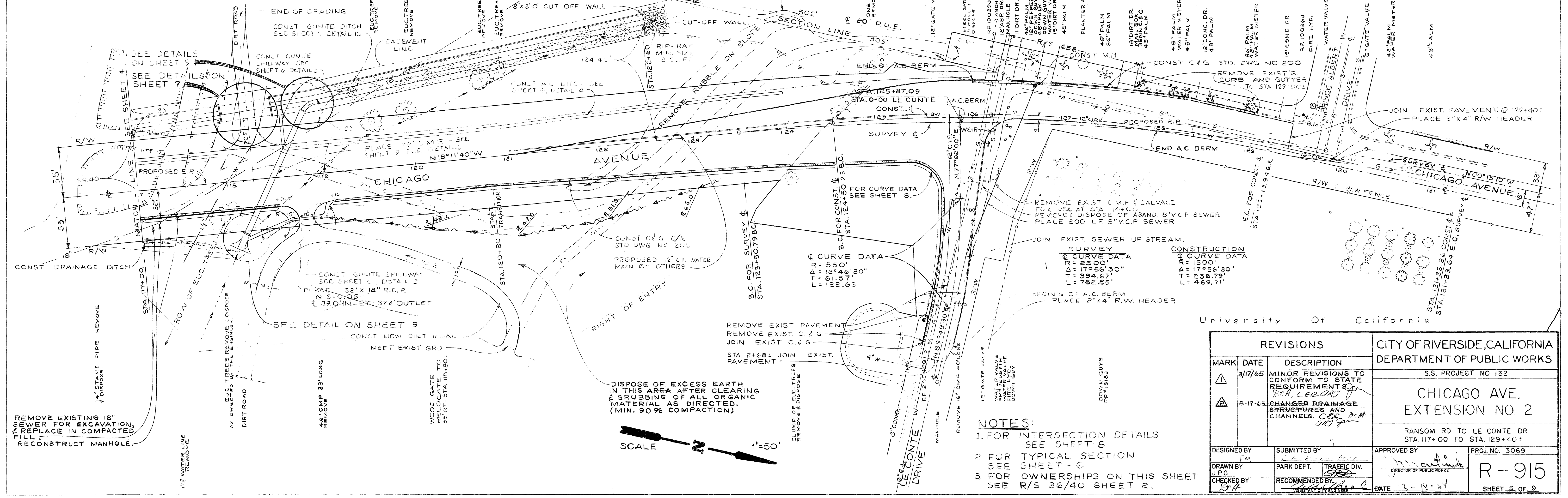
APPROVED BY *[Signature]* PROJ. NO. 3069
 Director of Public Works
R-915
 SHEET 3 OF 9

PLAN	
NOTE BOOK	PLOTTED
IN. OF PLAN CHECKED	ALIGNMENT CHECKED
DATE	

FOR TYPICAL SECTION SEE SHEET-6

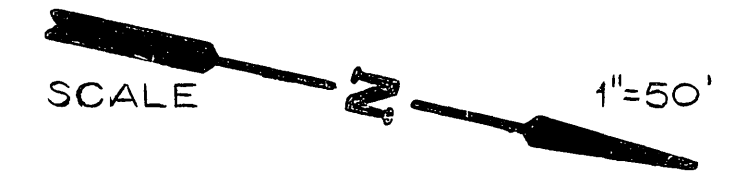


B.M.: ELEV. 917.620' - R.R. SPIKE IN POLE NO. 19038J,
 188' W. OF CL, STA. 121+60
 B.M.: ELEV. 982.849' - PK. IN S.W. CURB RET. CHICAGO &
 PRINCE ALBERT DR.
 F.B.: 696, 697, C-6/68-76, R-711
 SCALE: HOR. 1" = 50'
 VERT. 1" = 10'



REVISIONS			CITY OF RIVERSIDE, CALIFORNIA DEPARTMENT OF PUBLIC WORKS	
MARK	DATE	DESCRIPTION	S.S. PROJECT NO. 132	
▲	3/17/65	MINOR REVISIONS TO CONFORM TO STATE REQUIREMENTS	CHICAGO AVE. EXTENSION NO. 2	
▲	8-17-65	CHANGED DRAINAGE STRUCTURES AND CHANNELS.		
DESIGNED BY: [Signature]			APPROVED BY: [Signature]	PROJ. NO. 3069
DRAWN BY: J.P.G.			RECOMMENDED BY: [Signature]	R-915
CHECKED BY: [Signature]			DATE: 2-10-65	SHEET 5 OF 9

- NOTES:
- FOR INTERSECTION DETAILS SEE SHEET 8
 - FOR TYPICAL SECTION SEE SHEET 6
 - FOR OWNERSHIPS ON THIS SHEET SEE R/S 36/40 SHEET 2.

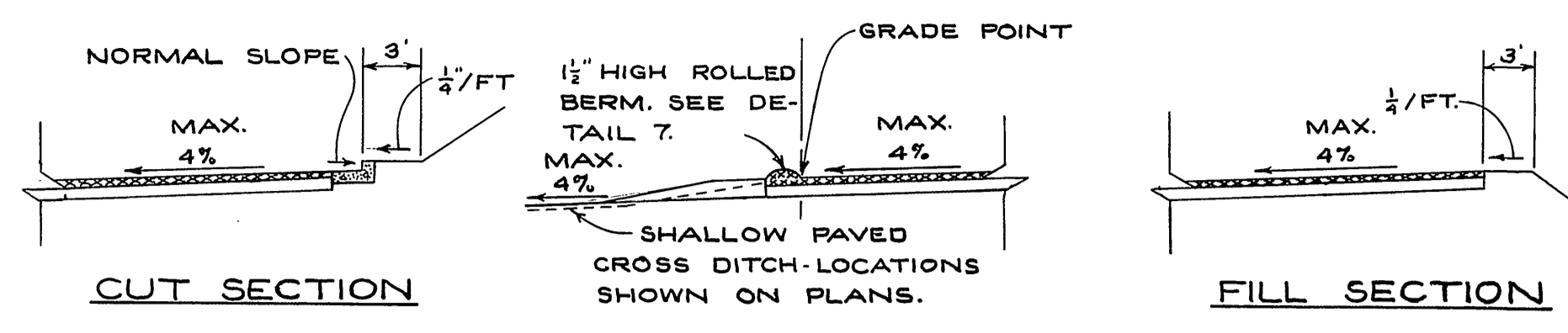


REMOVE EXISTING 18" SEWER FOR EXCAVATION. REPLACE IN COMPACTED FILL. RECONSTRUCT MANHOLE.

42" CMP 33' LONG REMOVE

WOOD GATE TO RELOCATE TO 55' RT. STA 116+80:

DISPOSE OF EXCESS EARTH IN THIS AREA AFTER CLEARING & GRUBBING OF ALL ORGANIC MATERIAL AS DIRECTED. (MIN. 90% COMPACTION)

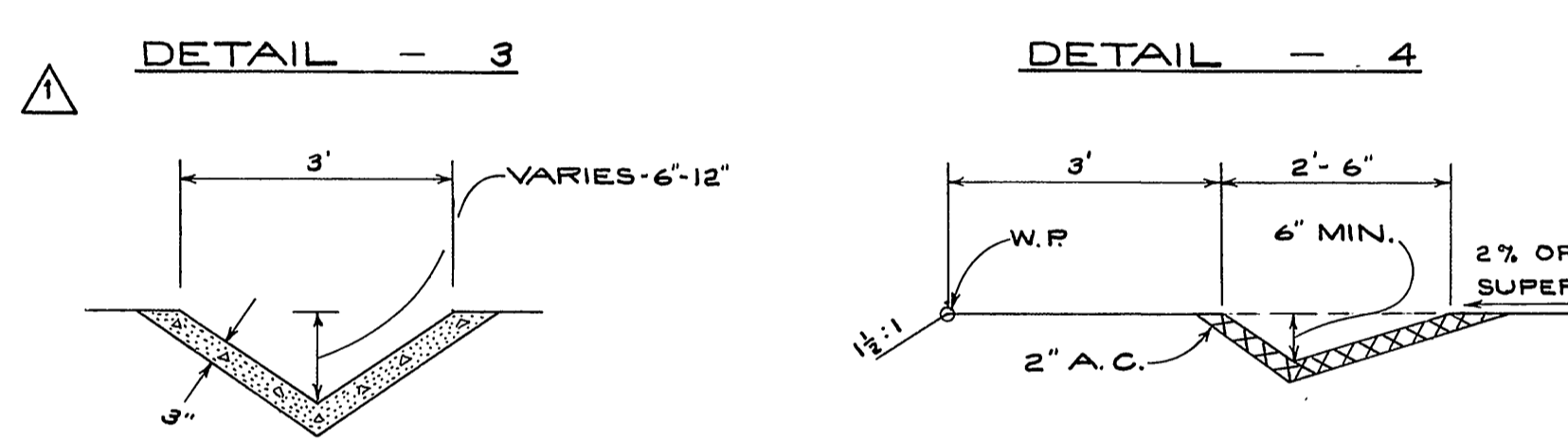


SUPERELEVATED SECTIONS



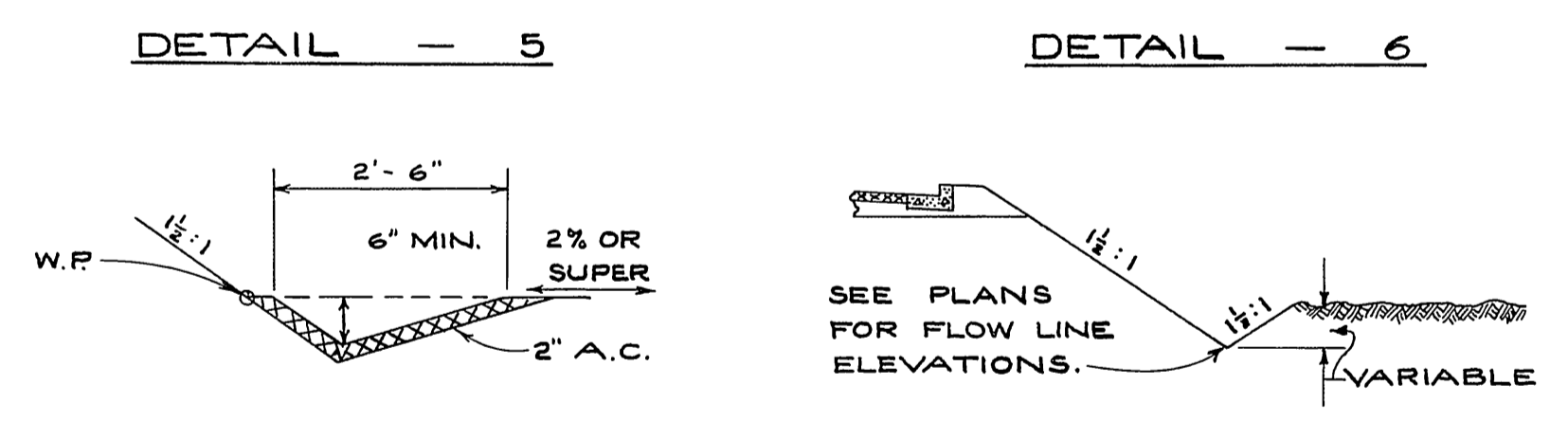
BERM AT \bar{C} LE CONTE DR. STA. 0+06 TO STA. 0+32 ITEM NO. 8.

A.C. BERM AT EDGE OF PAVEMENT. ITEM NO. 8.



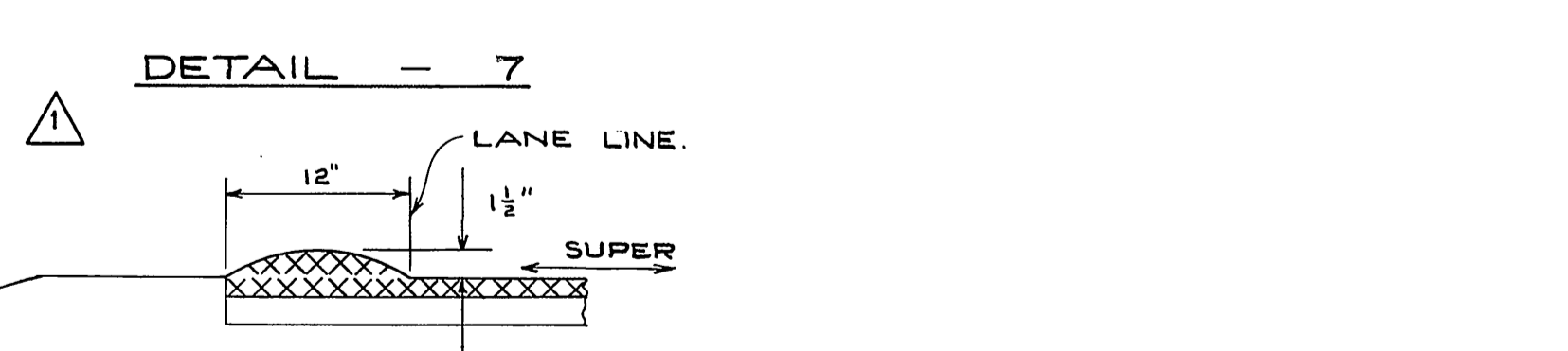
TYPICAL SECTION OF GUNITE SPILLWAY - SEE PLAN FOR LOCATIONS AND DEPTHS. ITEM NO. 5
NOTE: ALTERNATE 2" A.C. SPILLWAY OF SIMILAR SECTION AT LOCATIONS SHOWN ON PLANS OR AS DIRECTED BY THE ENGINEER. ITEM NO. 9

TYPICAL FILL SECTION OF A.C. DITCH. ITEM NO. 9.



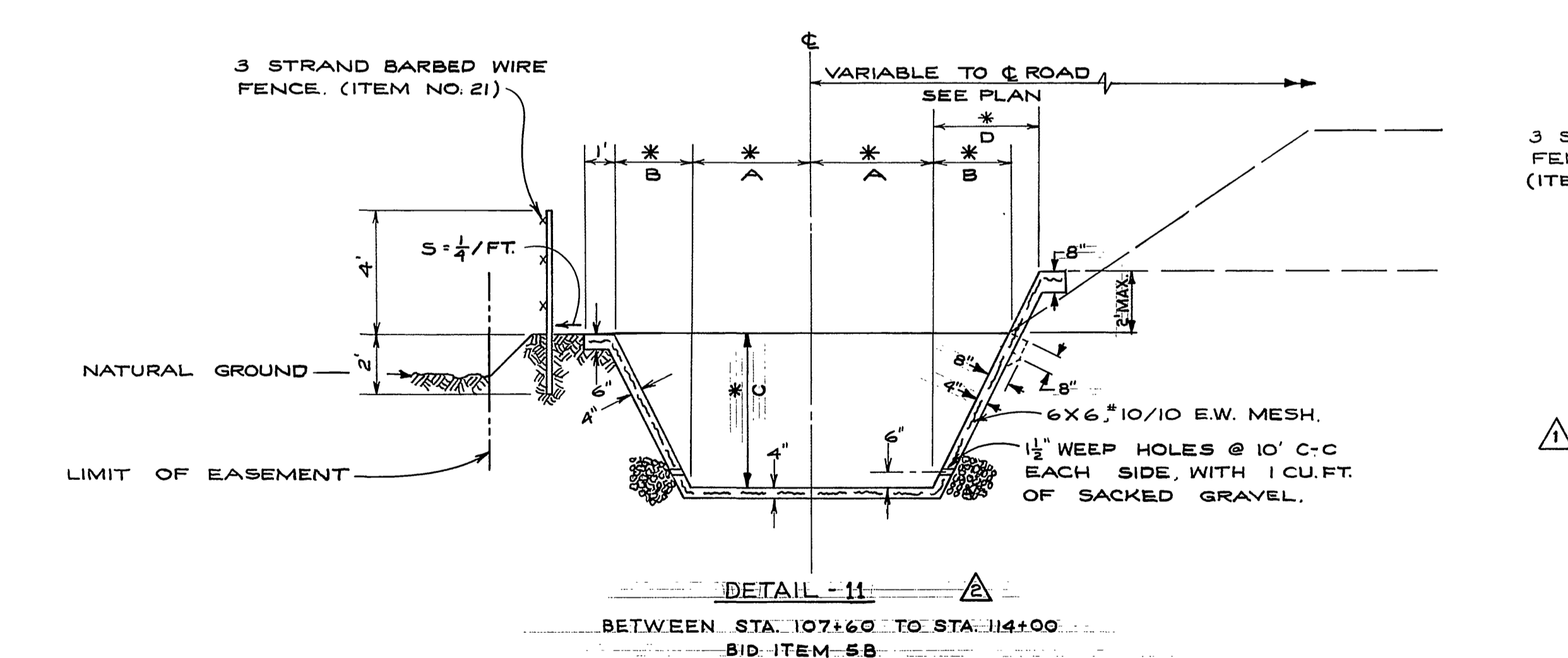
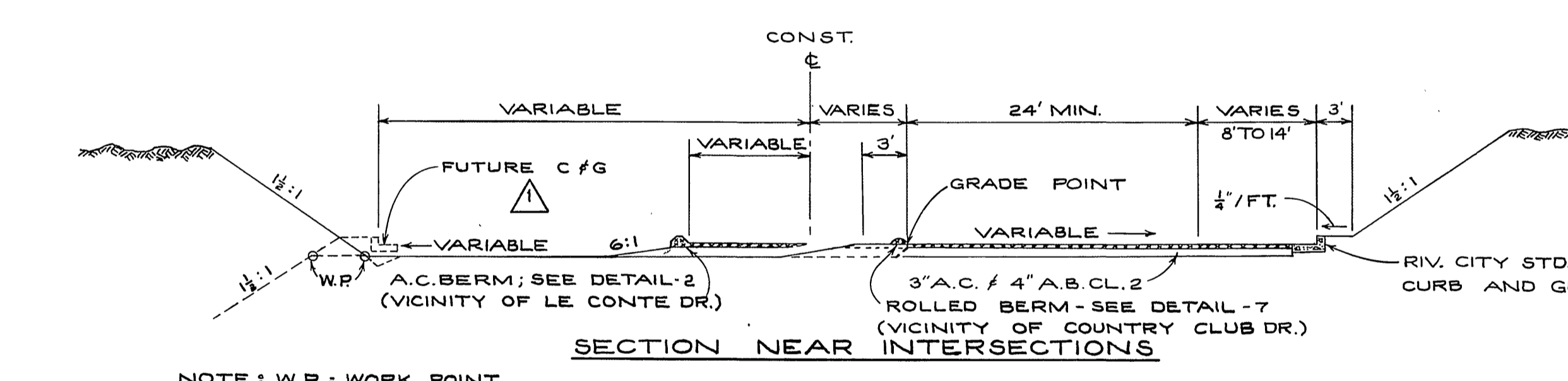
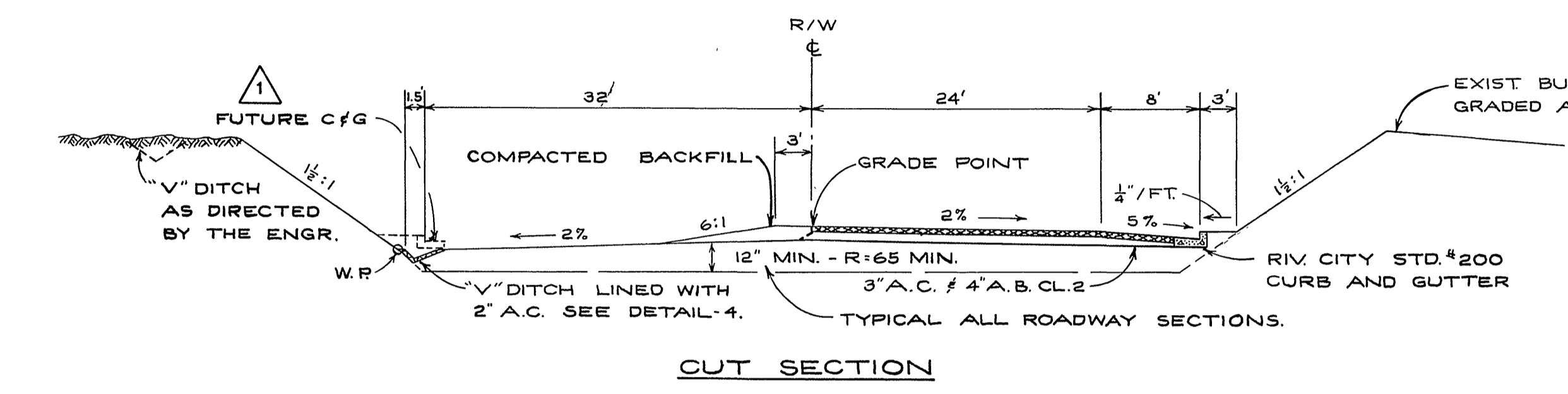
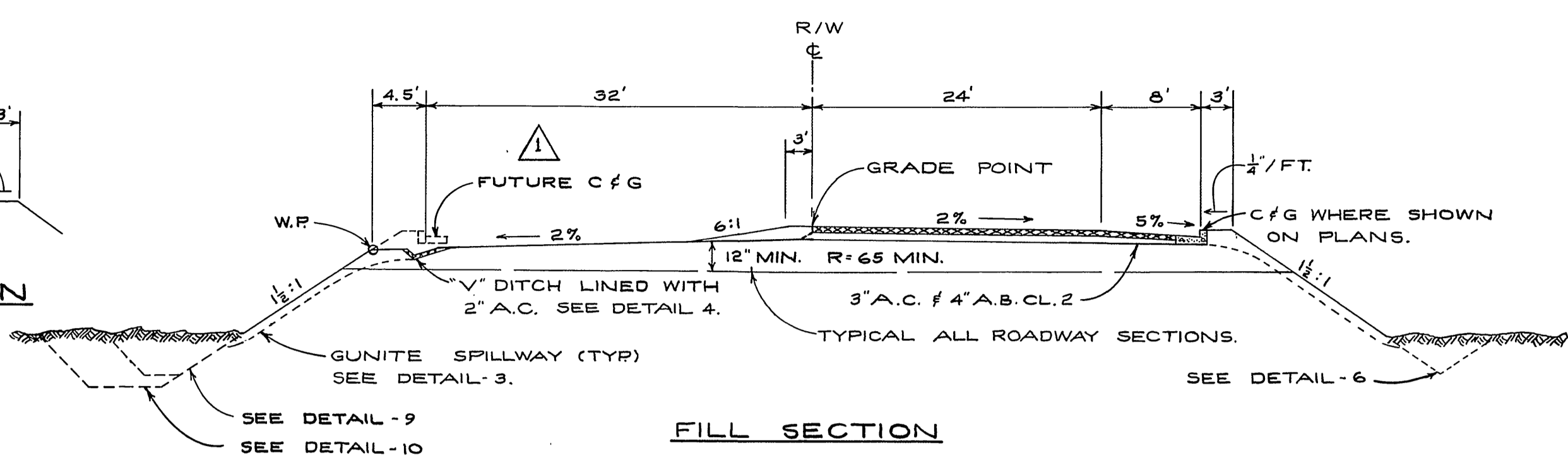
TYPICAL CUT SECTION OF A.C. DITCH. ITEM NO. 9

TYPICAL SECTION OF TOE DITCH. STA. 108+00 TO STA. 118+00



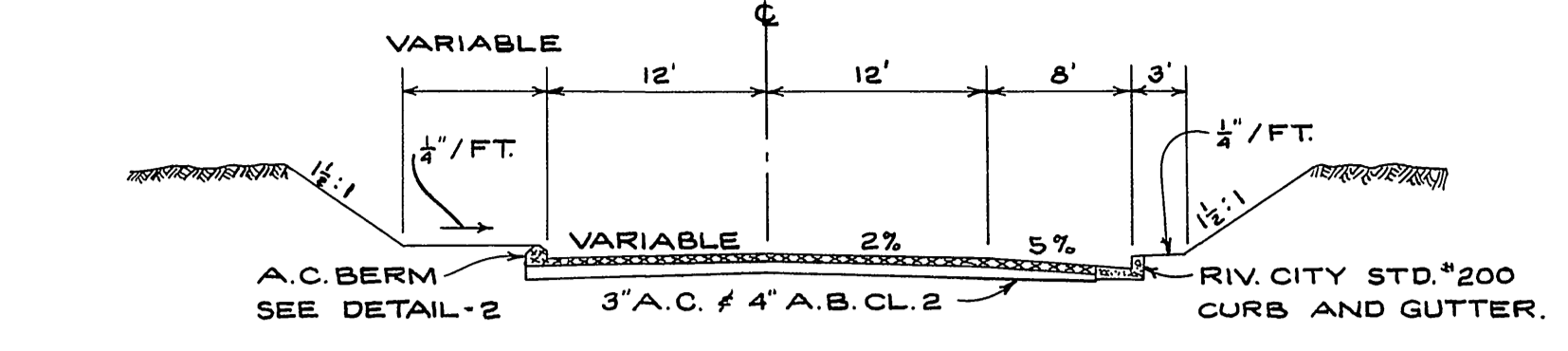
TYPICAL SECTION OF ROLLED BERM. ITEM NO. 7.

MISCELLANEOUS DETAILS

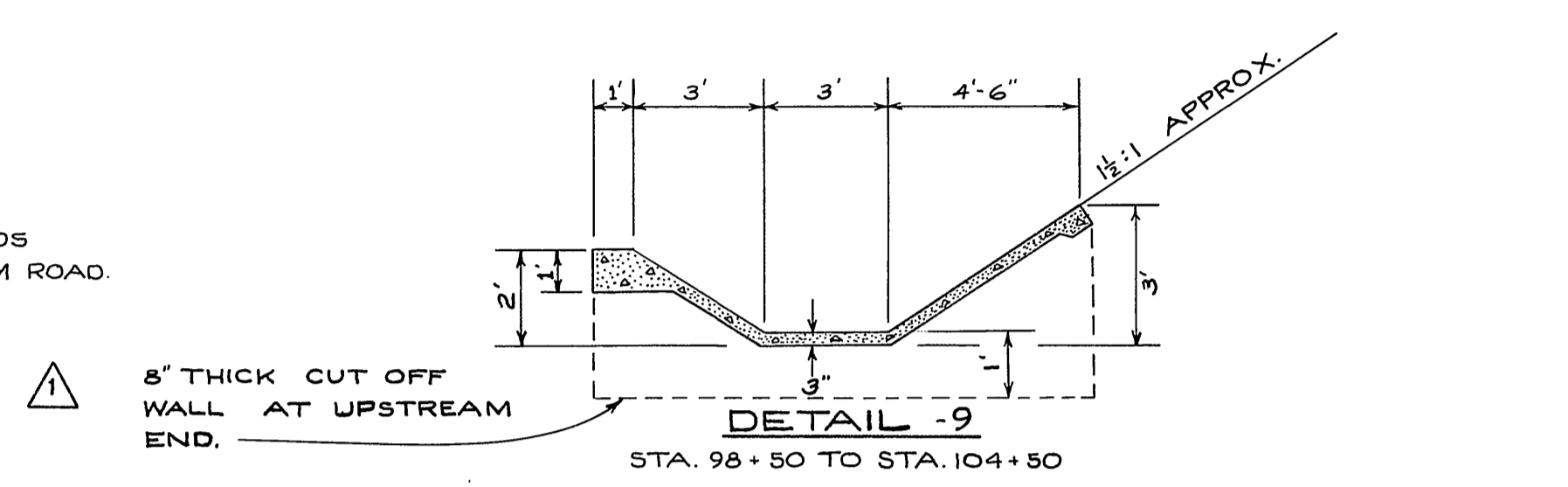


TYPICAL SECTIONS OF GUNITE CHANNEL

GENERAL NOTES:
1. FOR SPECIAL DETAILS: SEE SHEET 9.
2. * SEE SCHEDULE



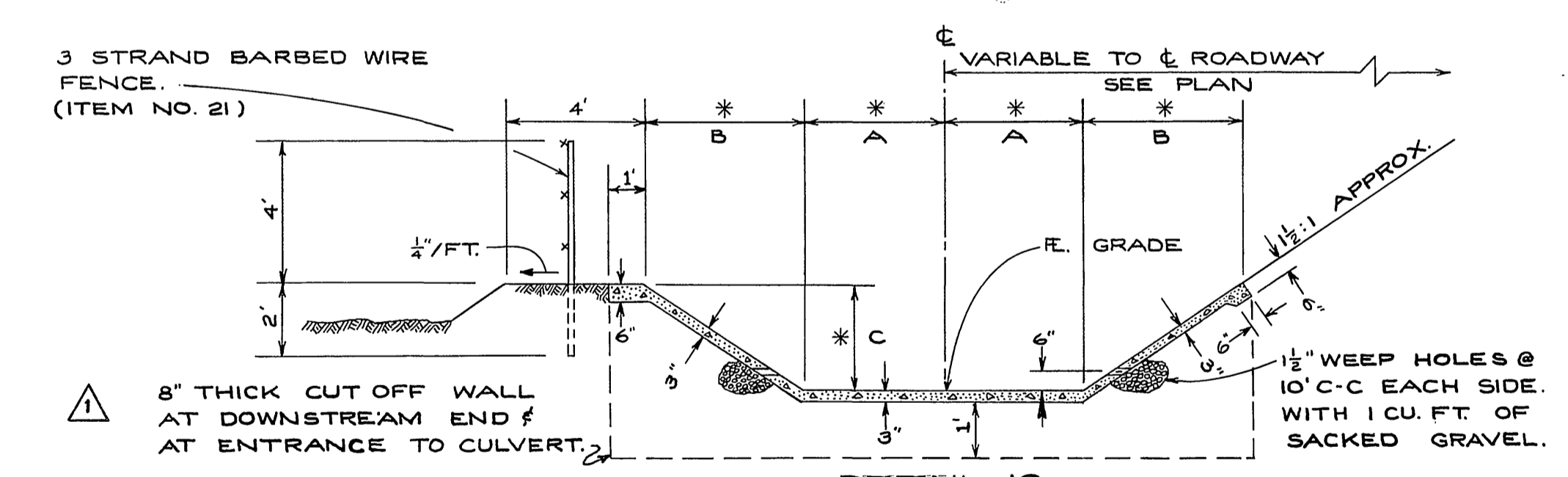
TYPICAL SECTION OF LE CONTE DR.



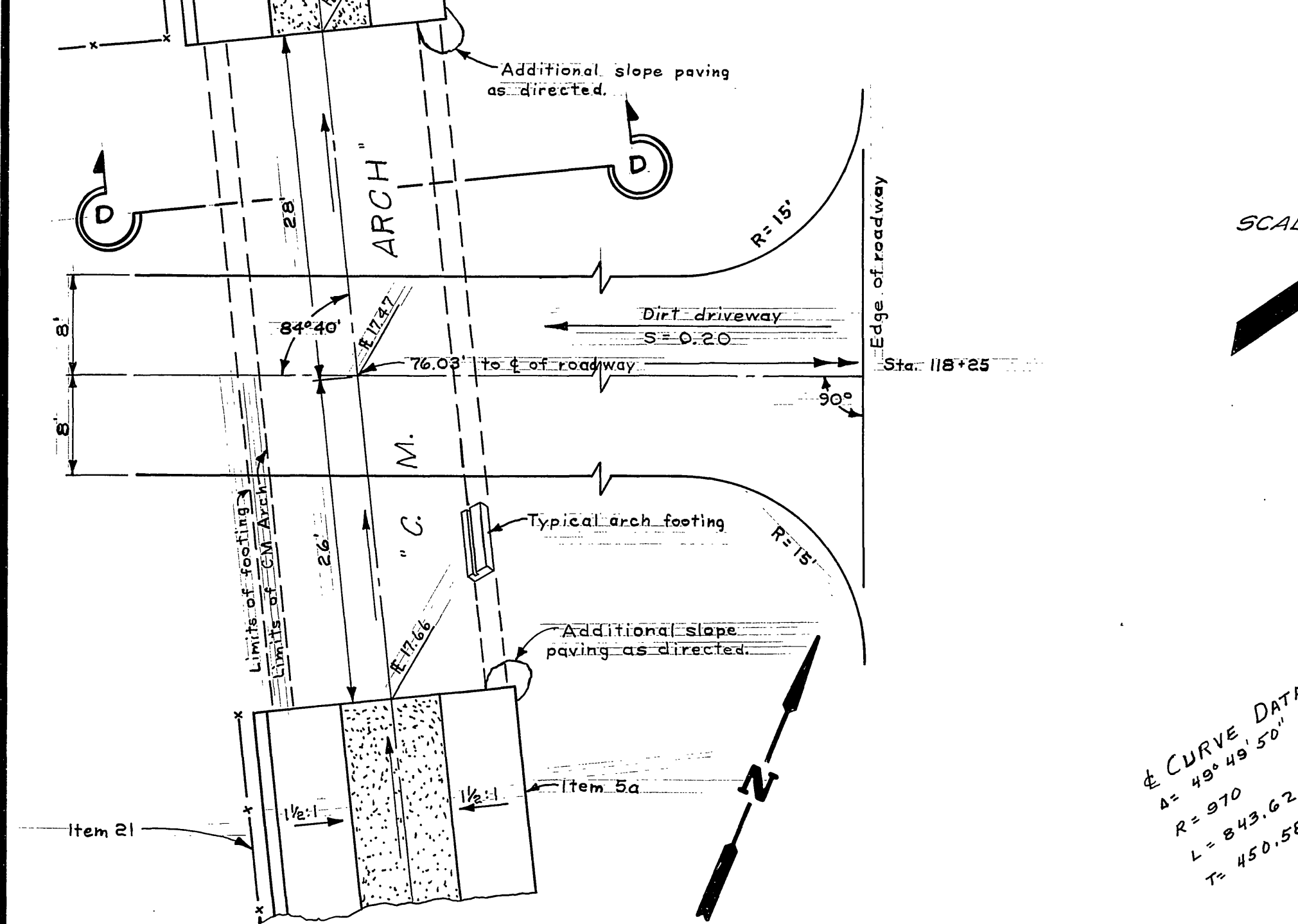
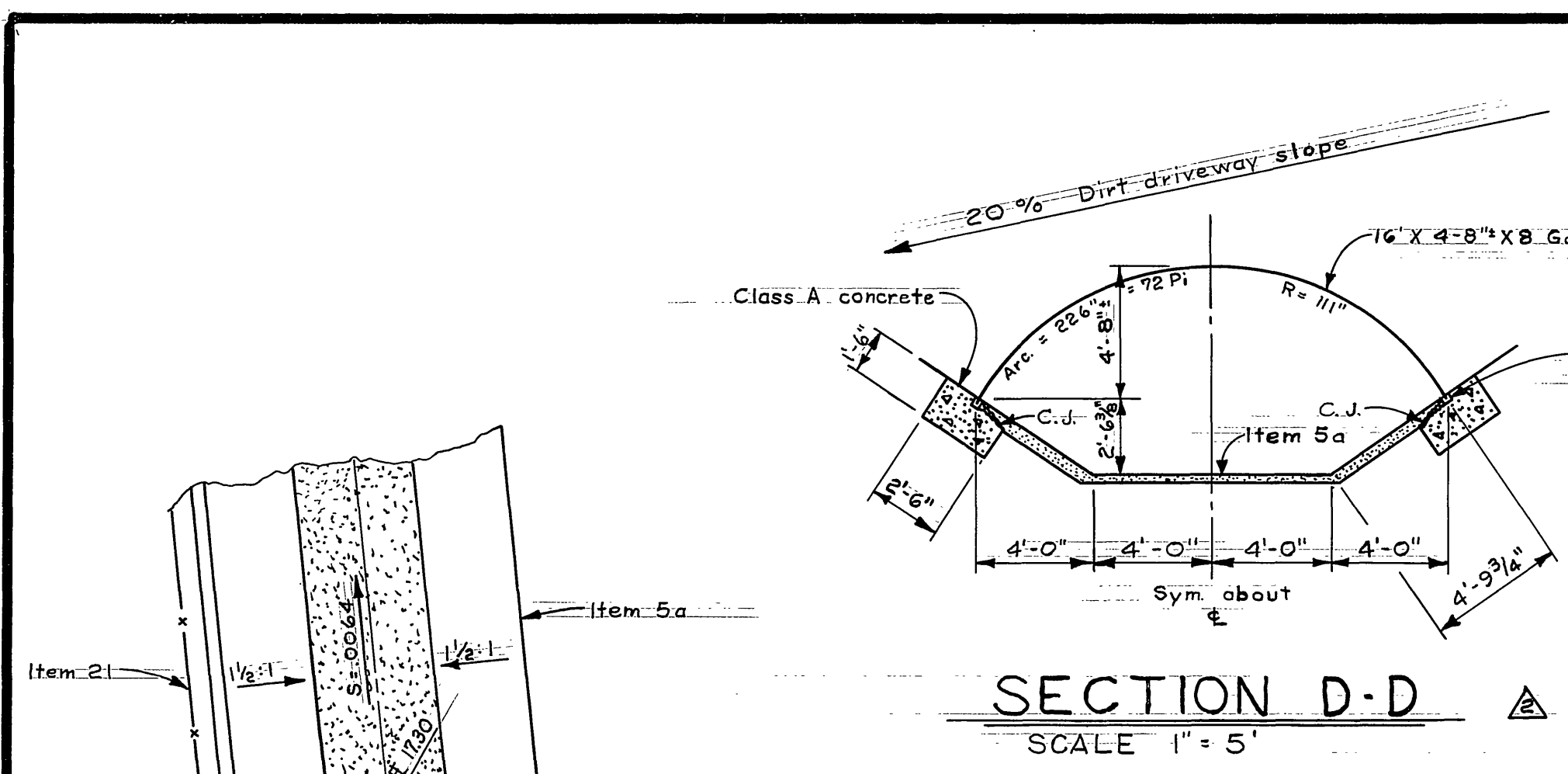
SCHEDULE OF DIMENSION SHOWN *

FROM	TO	A	B	C
STA. 107+60	STA. 109+67	2'	2.25'	4.5'
STA. 110+17	STA. 112+00	VARIES 3' TO 4'	VARIES 3' TO 2.5'	VARIES 6' TO 5'
STA. 112+00	STA. 113+00	4'	2.5'	5'
STA. 113+00	STA. 114+00	4'	VARIES 2.5 TO 6'	VARIES 5' TO 4'
STA. 114+00	STA. 118+62	4'	6'	4'
STA. 118+76.50	STA. 122+60	5'	6'	4'

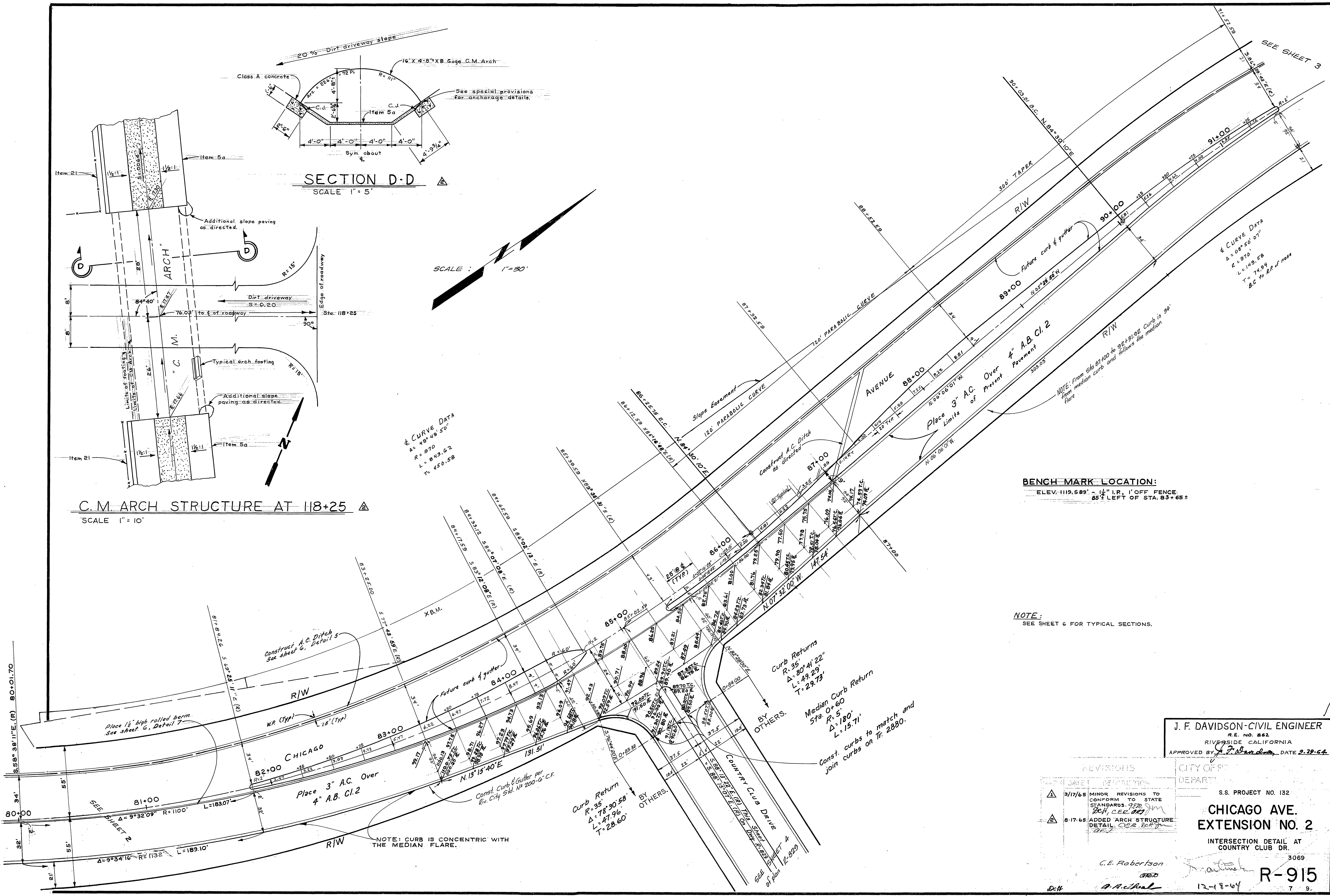
D = GUNITE TO TOP OF BANK OR AS DIRECTED BY ENGINEER.



REVISIONS			CITY OF RIVERSIDE, CALIFORNIA DEPARTMENT OF PUBLIC WORKS	
MARK	DATE	DESCRIPTION	S.S. PROJECT NO. 132	
Δ	6-30-65	REDRAWN AND MINOR REVISIONS. DCH, CER	CHICAGO AVE. EXTENSION NO. 2	
Δ	8-17-65	ADDED DETAIL - 11 BCH		
DESIGNED BY: DCH			APPROVED BY: [Signature]	
DRAWN BY: Rod			SUBMITTED BY: [Signature]	
CHECKED BY: DCH			RECOMMENDED BY: [Signature]	
			DATE: 7-27-65	
			PROJ. NO. 3069	
			R-915	
			SHEET 6 OF 9	



& CURVE DATA
 $\Delta = 49^\circ 49' 50''$
 $R = 970'$
 $L = 843.62'$
 $T = 450.58'$



BENCH MARK LOCATION:
 ELEV. 1119.589' - 1 1/2" I.P., 1' OFF FENCE,
 85' LEFT OF STA. 83+65'

NOTE:
 SEE SHEET 6 FOR TYPICAL SECTIONS.

J. F. DAVIDSON - CIVIL ENGINEER
 R.E. NO. 862
 RIVERSIDE CALIFORNIA
 APPROVED BY *J. F. Davidson* DATE 2-29-64

NO.	DATE	DESCRIPTION
1	3/17/65	MINOR REVISIONS TO CONFORM TO STATE STANDARDS. <i>JFM</i>
2	8-17-65	ADDED ARCH STRUCTURE DETAIL. <i>CEB</i>

CITY OF CHICAGO
 DEPARTMENT OF PUBLIC WORKS
 S.S. PROJECT NO. 132
CHICAGO AVE. EXTENSION NO. 2
 INTERSECTION DETAIL AT COUNTRY CLUB DR.

C.E. Robertson
 3069
R-915
 12-18-64

DATE	
BY	
PLAN	
SURVEYED	
NOTE BOOK	
ALIGNMENT CHECKED	
RT. OF WAY CHECKED	
NO.	

SURVEY &
 R=2500'
 Δ=17° 56' 30"
 T=394.67'
 L=782.85'

CONSTRUCTION &
 R=1500'
 Δ=17° 56' 30"
 T=236.79'
 L=469.71'

CURVE DATA
 R=480'
 Δ=10° 19' 52"
 T=43.39'
 L=86.45'

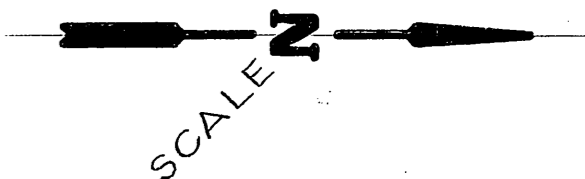
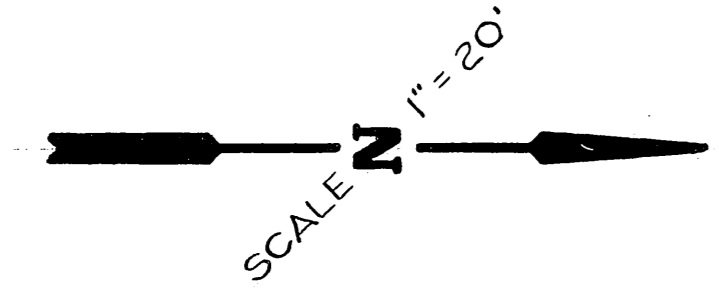
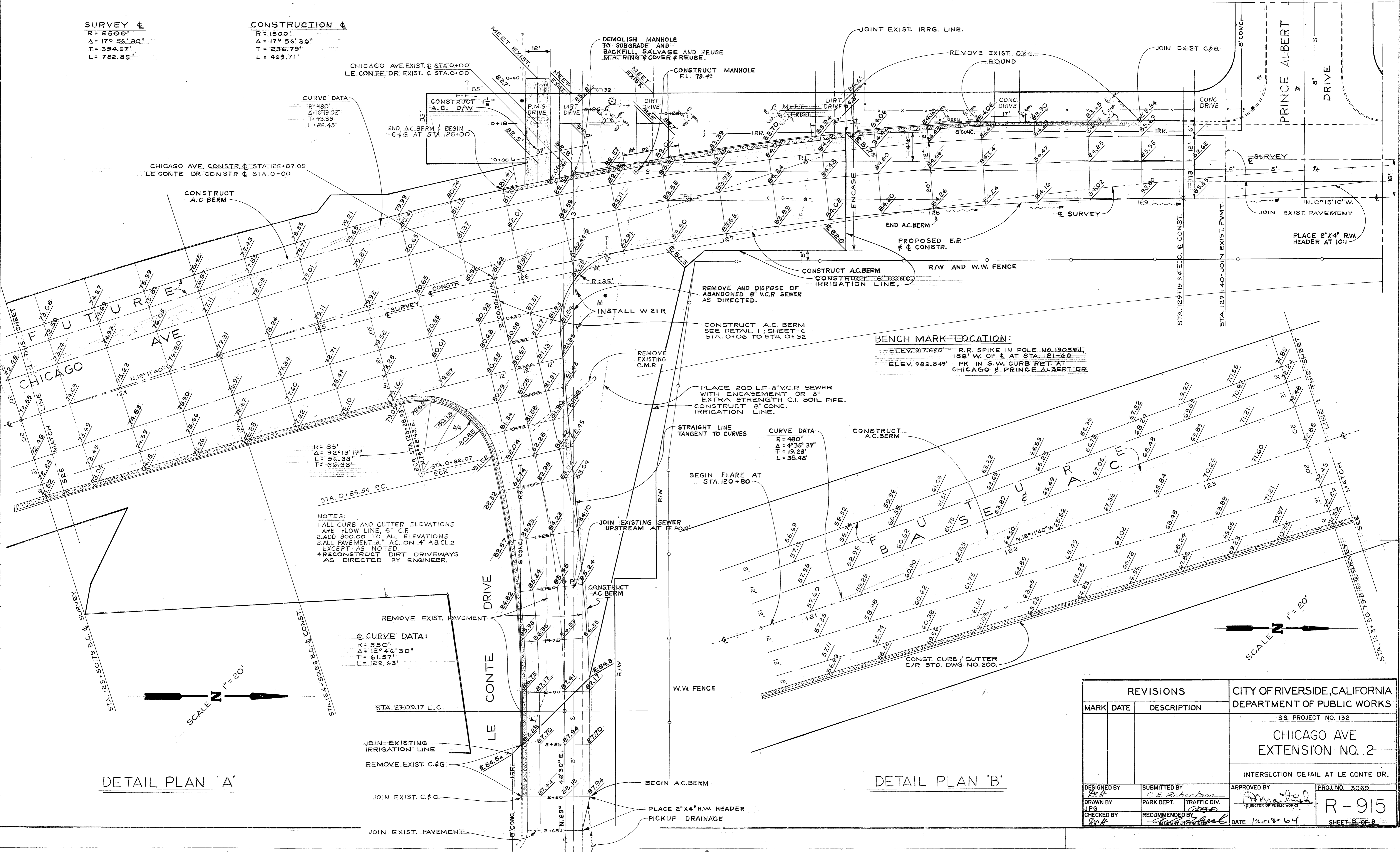
CURVE DATA
 R=35'
 Δ=92° 13' 17"
 T=56.33'
 L=36.38'

NOTES:
 1. ALL CURB AND GUTTER ELEVATIONS ARE FLOW LINE 6" C.F.
 2. ADD 900.00 TO ALL ELEVATIONS.
 3. ALL PAVEMENT 3" AC ON 4" AB.C.L.2 EXCEPT AS NOTED.
 4. RECONSTRUCT DIRT DRIVEWAYS AS DIRECTED BY ENGINEER.

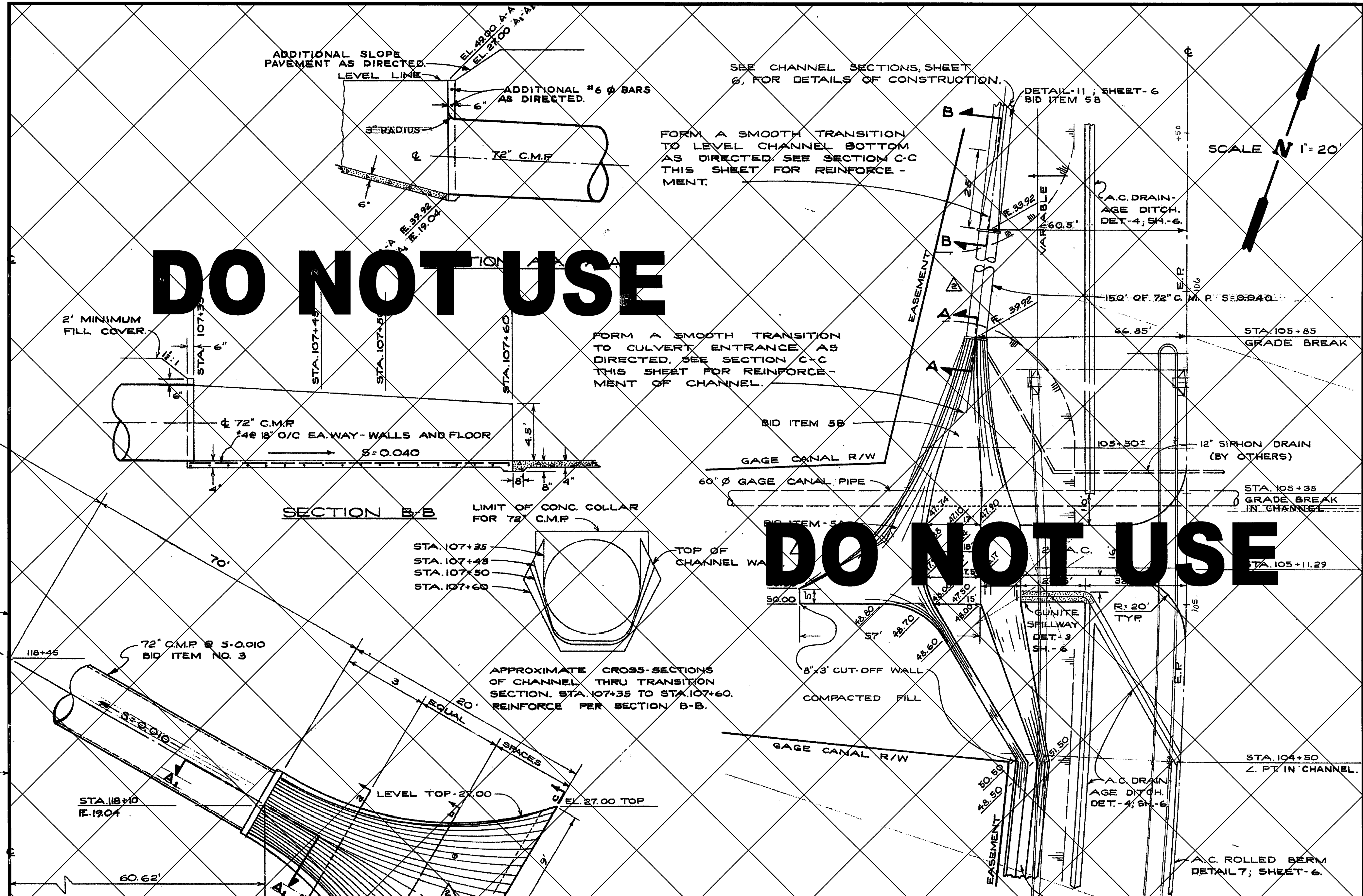
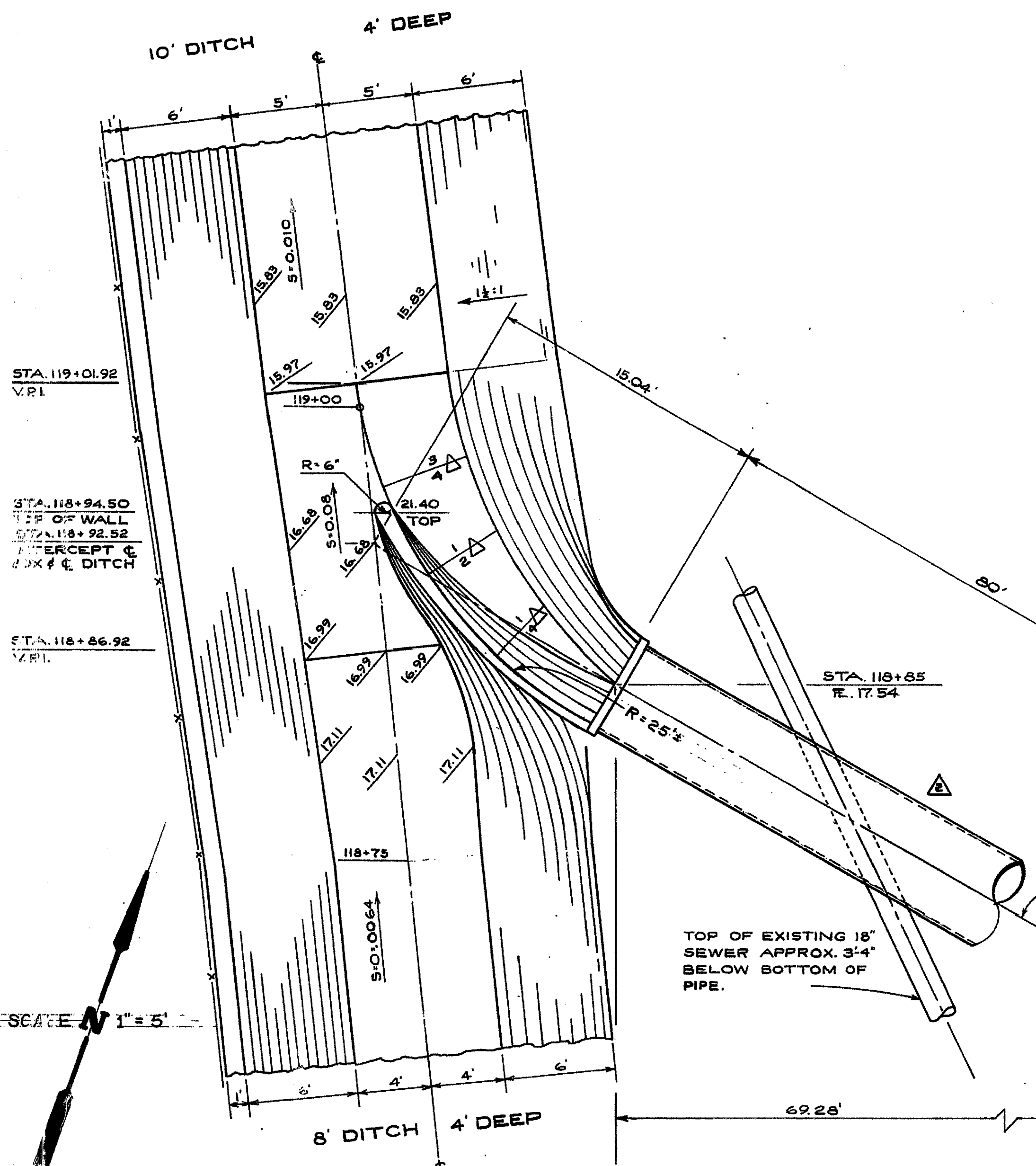
CURVE DATA:
 R=550'
 Δ=12° 46' 30"
 T=61.57'
 L=122.63'

DETAIL PLAN "A"

DETAIL PLAN "B"



REVISIONS			CITY OF RIVERSIDE, CALIFORNIA DEPARTMENT OF PUBLIC WORKS	
MARK	DATE	DESCRIPTION		
			S.S. PROJECT NO. 132	
			CHICAGO AVE EXTENSION NO. 2	
			INTERSECTION DETAIL AT LE CONTE DR.	
DESIGNED BY <i>RCA</i>	SUBMITTED BY <i>C.F. Robertson</i>	APPROVED BY <i>[Signature]</i>	PROJ. NO. 3069	
DRAWN BY <i>JPG</i>	PARK DEPT. TRAFFIC DIV.	DIRECTOR OF PUBLIC WORKS	R-915	
CHECKED BY <i>RCA</i>	RECOMMENDED BY <i>[Signature]</i>	DATE 11-15-64	SHEET 8 OF 9	



DO NOT USE

DO NOT USE

DO NOT USE

GENERAL NOTES

1. CONSTRUCT GUNITE CHANNEL LINING AS DIRECTED
2. ROUND ALL GRADE BREAKS 10' ARC.
3. ROUND ALL CORNERS - MIN. 10' ARC LENGTH.
4. FOR DETAIL OF A.C. DITCH SEE SHEET-6 (ITEM '9')
5. FLUME IS BID ITEM NO. 5A - EXCEPT AS NOTED.

INLET FLUME TO CHANNEL
FOR LOCATION SEE SHEET-4

REVISIONS			CITY OF RIVERSIDE, CALIFORNIA DEPARTMENT OF PUBLIC WORKS	
MARK	DATE	DESCRIPTION	S. S. PROJECT NO. 132	
Δ	6-30-65	REDRAWN AND MINOR REVISIONS. <i>BCH CERON</i>	CHICAGO AVE. EXTENSION NO. 2	
Δ	8-17-65	CHANGED DRAINAGE STRUCTURES AND CHANNELS. <i>BCH CERON</i>	DRAINAGE DETAILS	
DESIGNED BY	SUBMITTED BY	APPROVED BY	PROJ. NO. 3069	
DRAWN BY	PARK DEPT.	TRAFFIC DIV.	R-915	
CHECKED BY	RECOMMENDED BY	DATE	SHEET 9 OF 9	

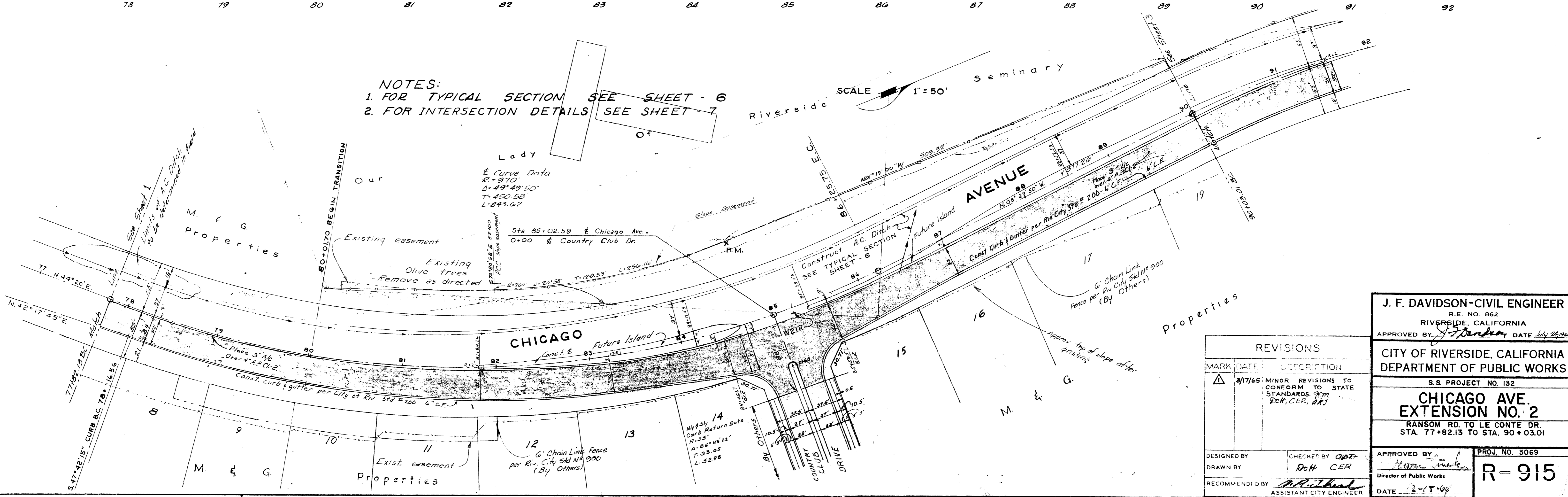
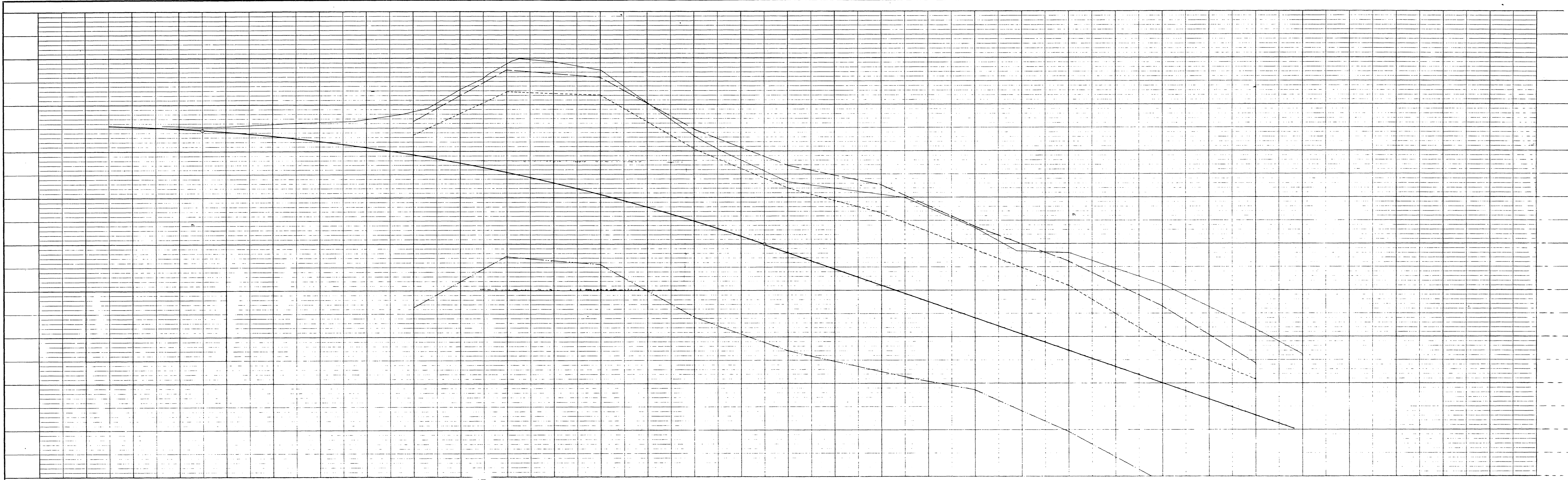
ENGINEER IN RESPONSIBLE CHARGE

Lonnie Young

LONGNIE YOUNG
R.C.E. No. 43216 EXPIRES: 3-31-12
DATE 02/17/2011

REGISTERED PROFESSIONAL ENGINEER
No. 43216
Exp. 3-31-2012
CIVIL
STATE OF CALIFORNIA

NO.	213
DATE	3/17/65
BY	DRH
CHECKED	CER
APPROVED	J. F. Davidson
REVISIONS	



NOTES:
 1. FOR TYPICAL SECTION SEE SHEET - 6
 2. FOR INTERSECTION DETAILS SEE SHEET - 7

SCALE 1" = 50'

Curve Data
 R = 970'
 Δ = 49° 49' 50"
 T = 450.58'
 L = 843.62'

Chicago Ave.
 Sta 85+02.59 to Chicago Ave.
 0+00 to Country Club Dr.

MARK	DATE	DESCRIPTION
Δ	3/17/65	MINOR REVISIONS TO CONFORM TO STATE STANDARDS. JFM, DRH, CER, DRJ

J. F. DAVIDSON-CIVIL ENGINEER
 R.E. NO. 862
 RIVERSIDE, CALIFORNIA
 APPROVED BY: *J. F. Davidson* DATE July 24, 1964

CITY OF RIVERSIDE, CALIFORNIA
 DEPARTMENT OF PUBLIC WORKS
 S.S. PROJECT NO. 132

CHICAGO AVE. EXTENSION NO. 2
 RANSOM RD. TO LE CONTE DR.
 STA. 77+82.13 TO STA. 90+03.01

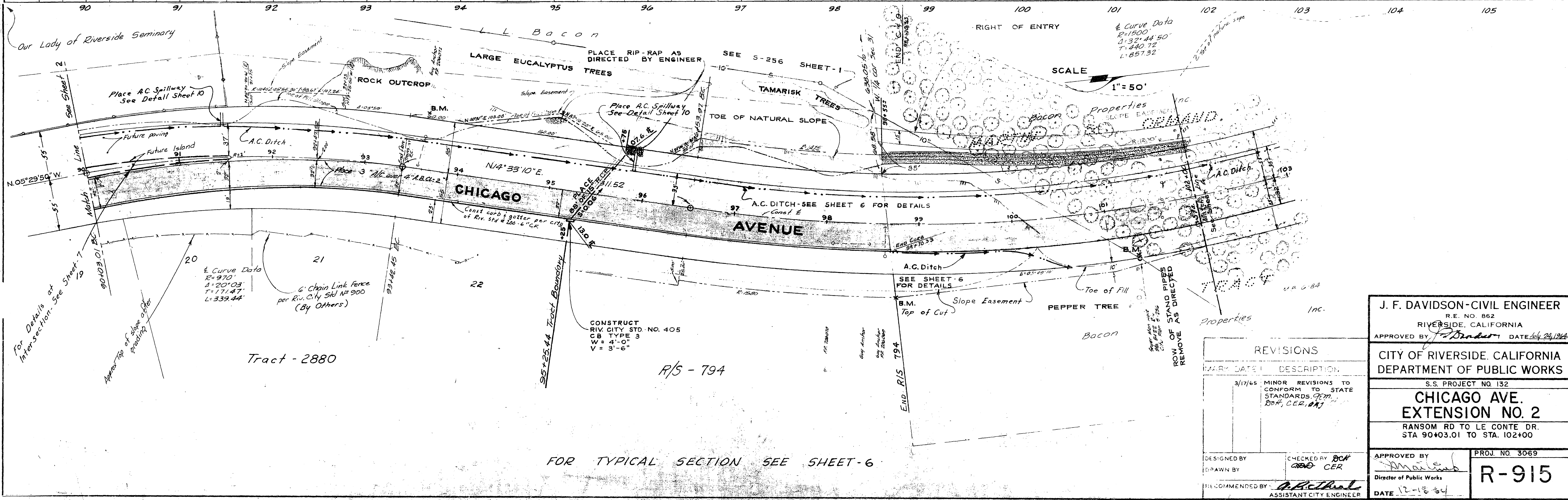
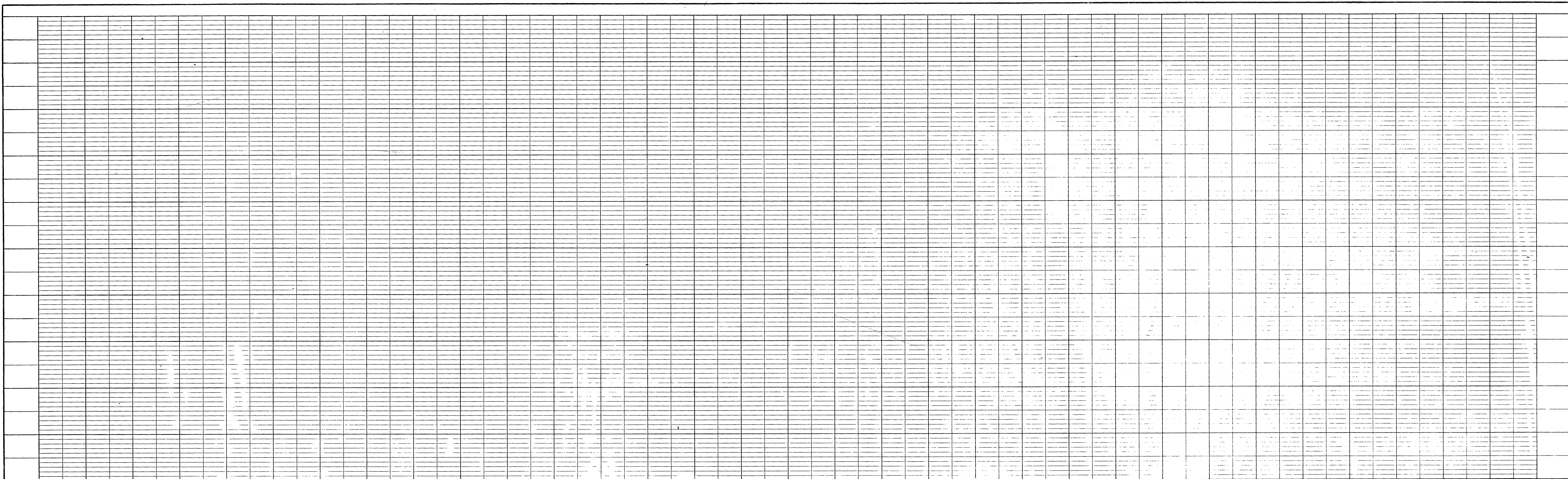
DESIGNED BY: *DRH*
 DRAWN BY: *DRH*
 RECOMMENDED BY: *J. F. Davidson*
 ASSISTANT CITY ENGINEER

CHECKED BY: *DRH*
 CER

APPROVED BY: *J. F. Davidson*
 Director of Public Works

DATE: 12-15-64

PROJ. NO. 3069
R-915



PROFILE	SUBMITTED	BY	DATE
NOTE BOOK	PLOTTED		
GRADES CHECKED	BY M.S. NOTED		
NO.	STATUS		

PLAN	SUBMITTED	BY	DATE
NOTE BOOK	PLOTTED		
NO.	STATUS		

J. F. DAVIDSON-CIVIL ENGINEER
 R.E. NO. 862
 RIVERSIDE, CALIFORNIA

APPROVED BY: *J. Davidson* DATE: *July 24, 1964*

CITY OF RIVERSIDE, CALIFORNIA
 DEPARTMENT OF PUBLIC WORKS

S.S. PROJECT NO. 132

CHICAGO AVE.
EXTENSION NO. 2
 RANSOM RD TO LE CONTE DR.
 STA 90+03.01 TO STA. 102+00

DESIGNED BY: *BCW*
 DRAWN BY: *CER*

CHECKED BY: *BCW*
CER

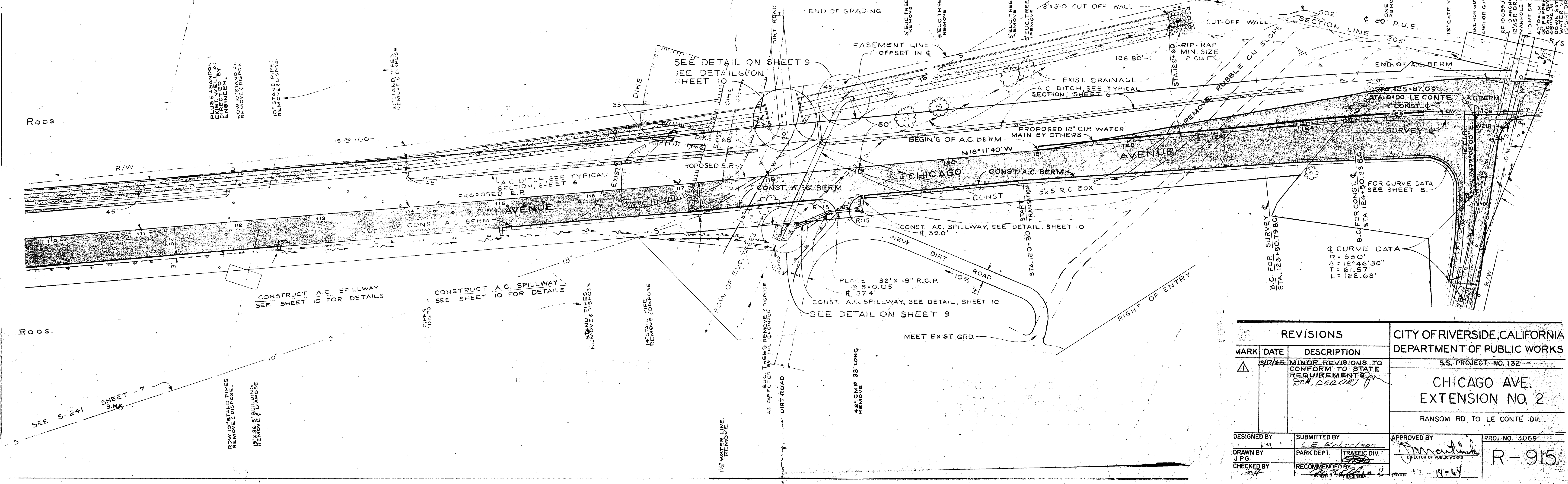
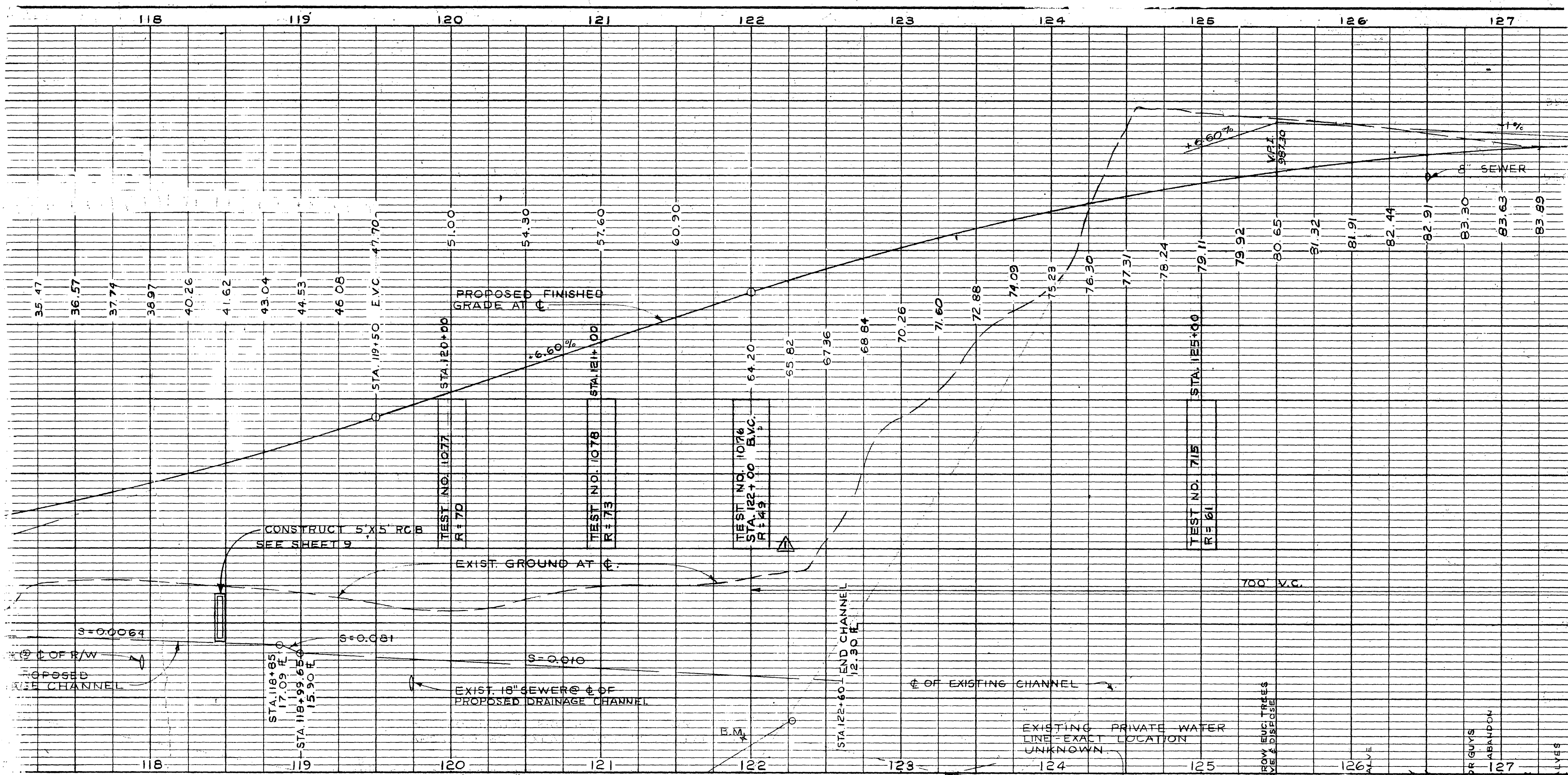
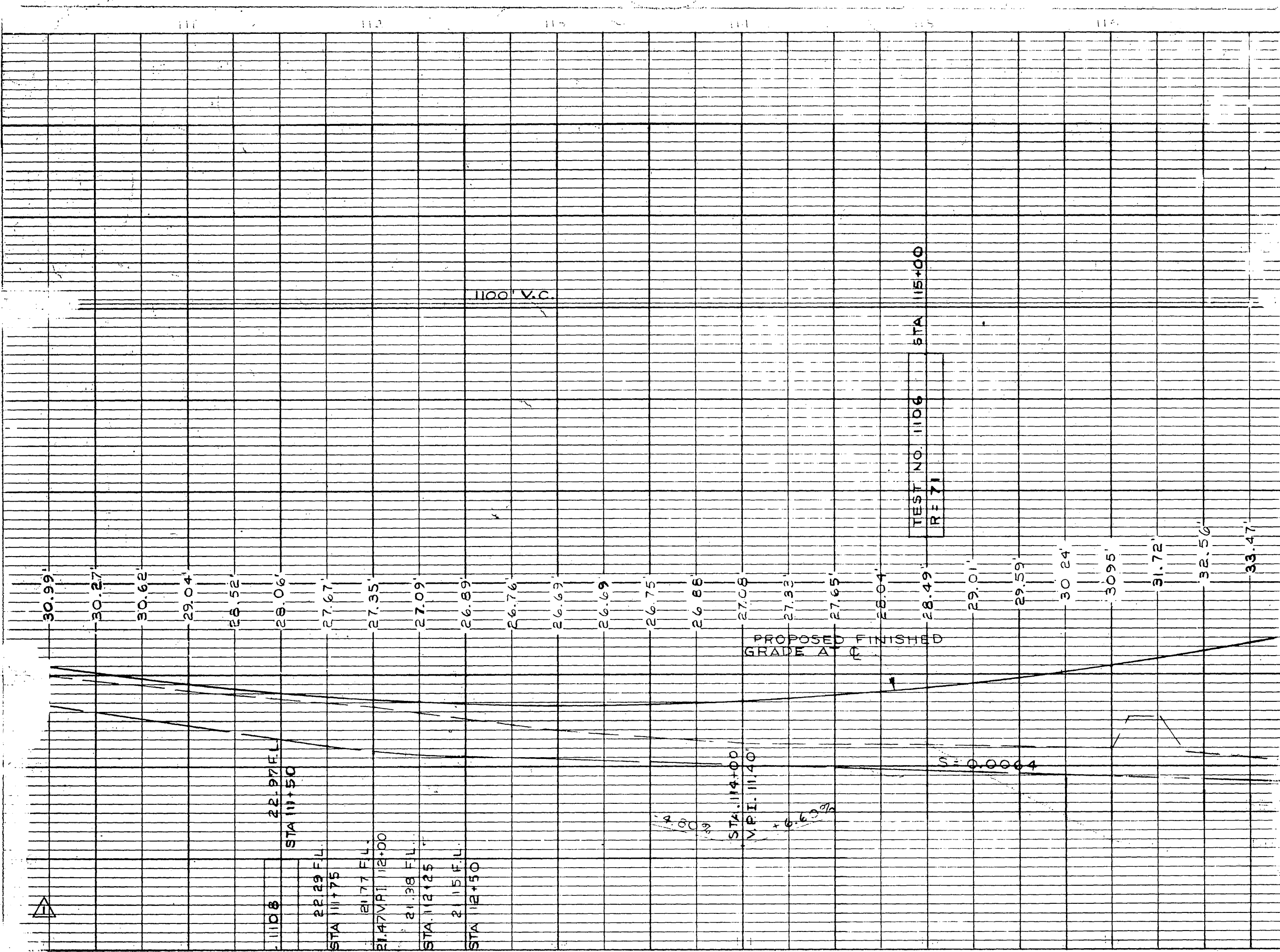
RECOMMENDED BY: *A.P. Theal*
 ASSISTANT CITY ENGINEER

APPROVED BY: *M. J. ...*
 Director of Public Works

DATE: *12-18-64*

PROJ. NO. 3069

R-915



REVISIONS			CITY OF RIVERSIDE, CALIFORNIA DEPARTMENT OF PUBLIC WORKS	
MARK	DATE	DESCRIPTION	S.S. PROJECT NO. 132	
▲	3/17/65	MINOR REVISIONS TO CONFORM TO STATE REQUIREMENTS <i>Doc. C.E.C. 101</i>	CHICAGO AVE. EXTENSION NO. 2 RANSOM RD TO LE CONTE DR.	
DESIGNED BY	J.P.G.	SUBMITTED BY		
DRAWN BY	J.P.G.	PARK DEPT.	TRAFFIC DIV.	R-915
CHECKED BY	J.P.G.	RECOMMENDED BY	DATE	12-19-64